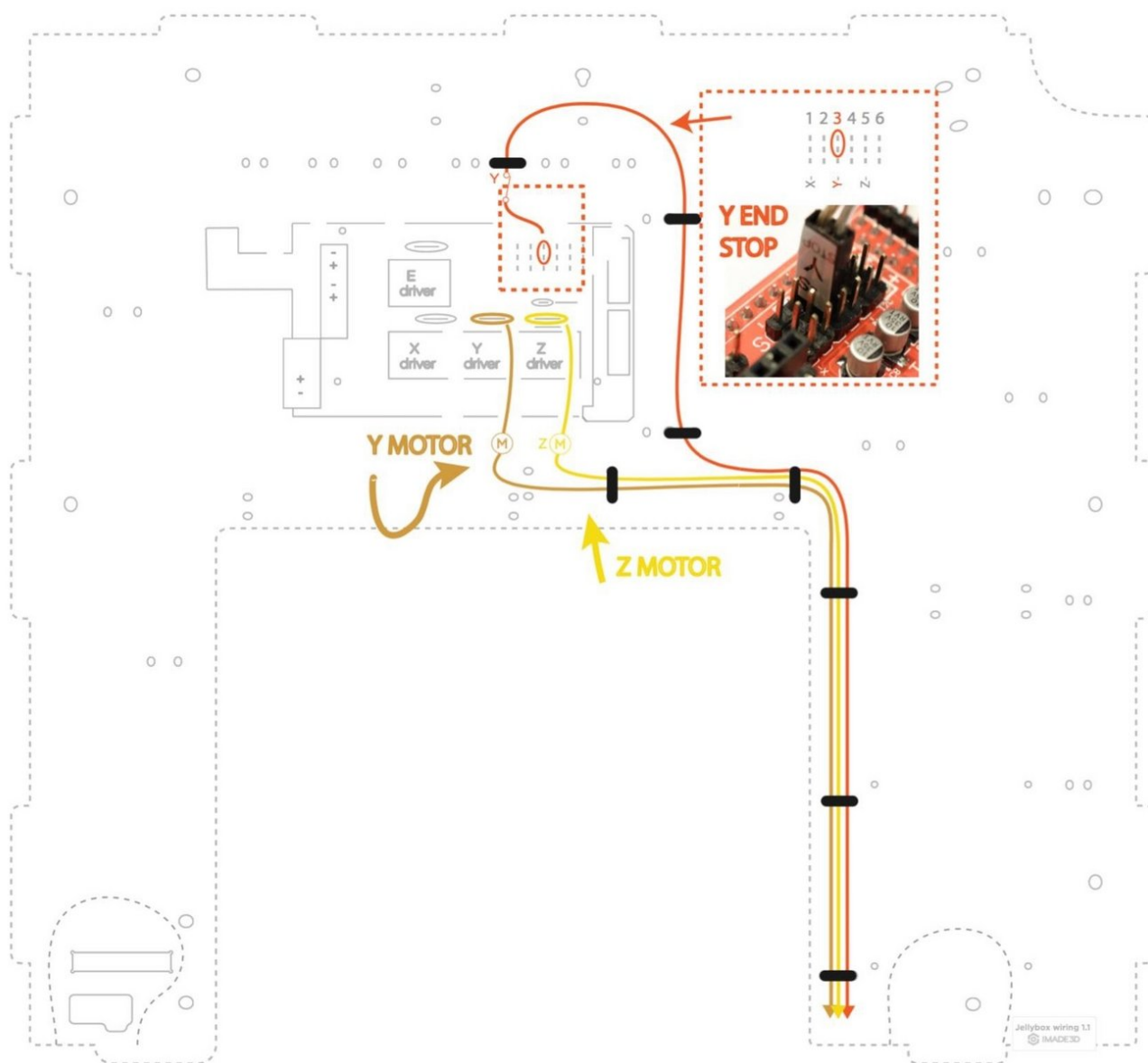




Y/Z Motors + Y EndStop

In this video, we install the Y and Z motors, and also the Y EndStop. These components go together because the wires run together on the inner back.

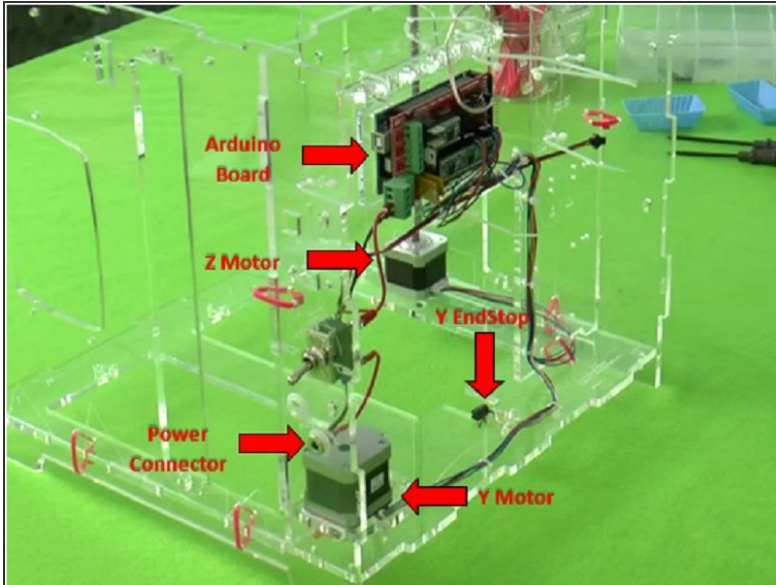
Y Motor, Y EndStop, Z Motor



INTRODUCTION

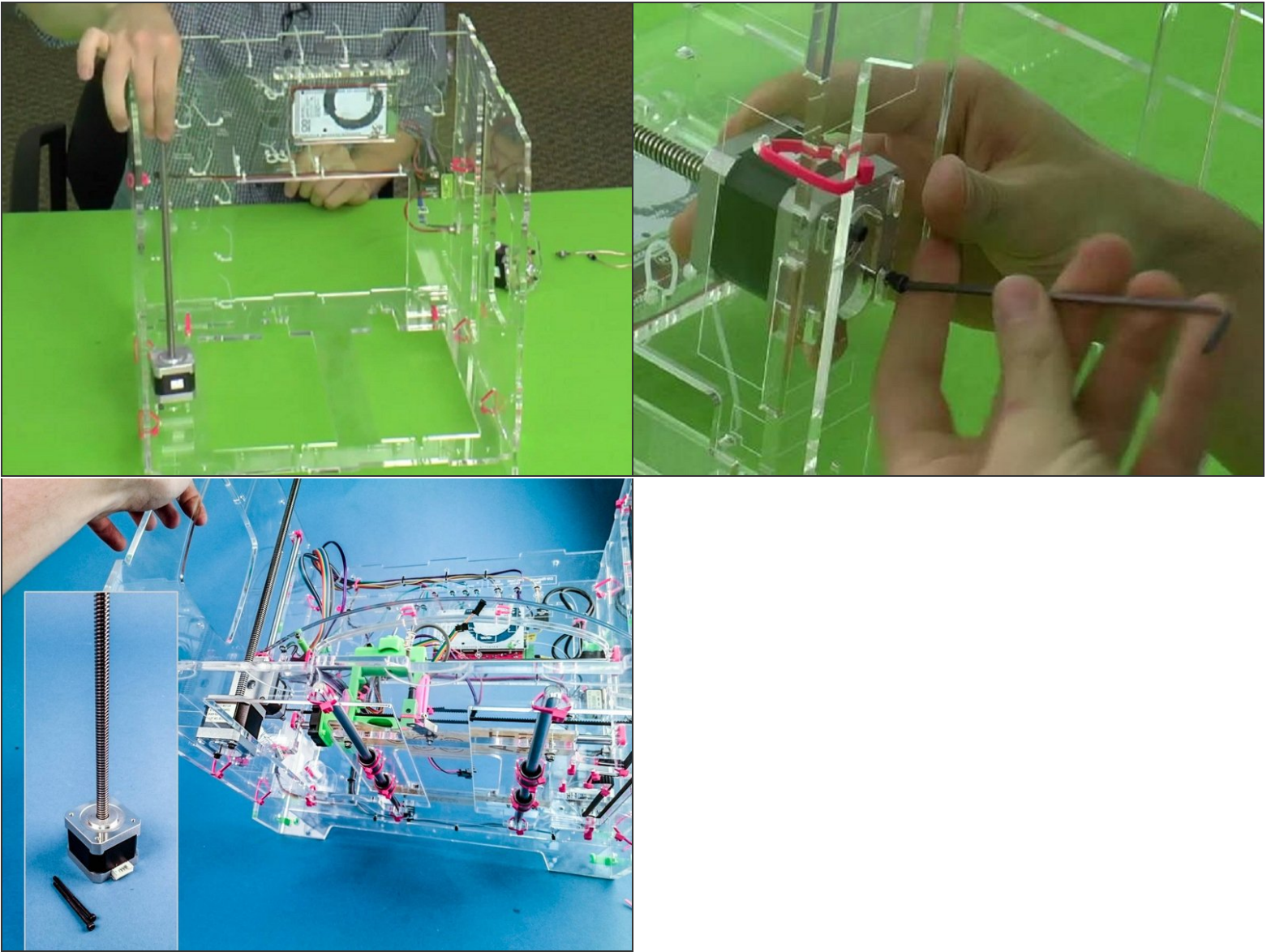
[video: <https://youtu.be/EAtp1tCxOhY>]

Step 1 — You'll Need:



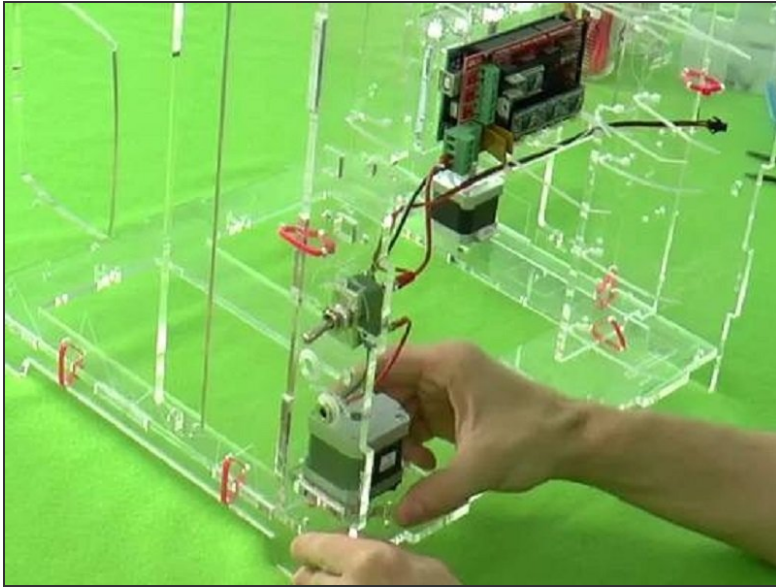
- Assembled Y Motor Bracket
- Z Motor with the Leadscrew
- Y EndStop
- ...and related wires

Step 2 — Attach the Z Motor



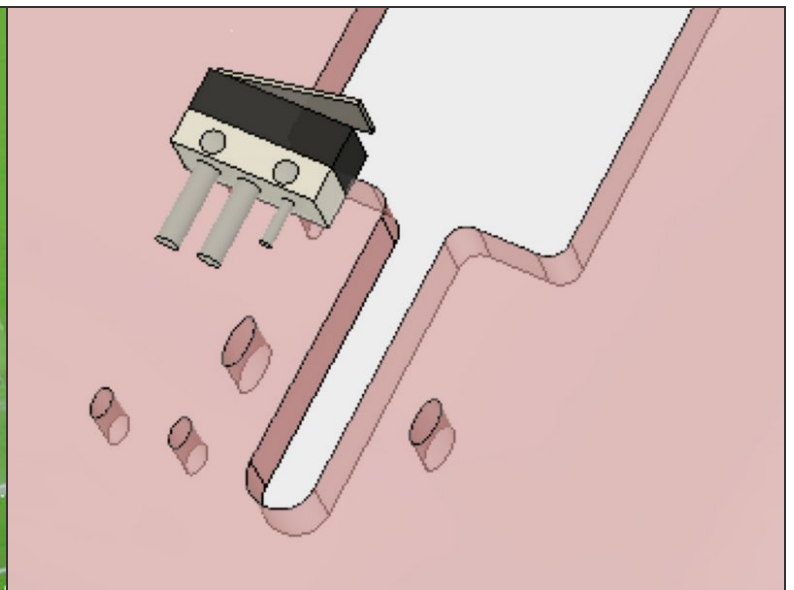
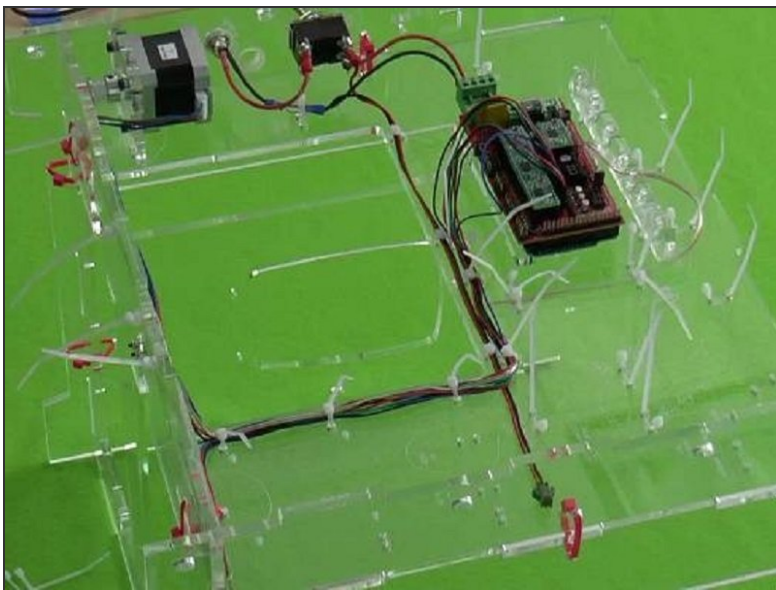
- Unscrew the two M3x45 bolts from the base of the Z Motor.
- Use the two M3x45 bolts to attach the motor to the bottom of the acrylic piece.
- Make sure the connector on the Z Motor is facing towards the back of the acrylic unit.
- Tip: You don't need to accurately position the motor at this stage; just tighten the screws so the motor doesn't flap around.

Step 3 — Attach the Y Motor



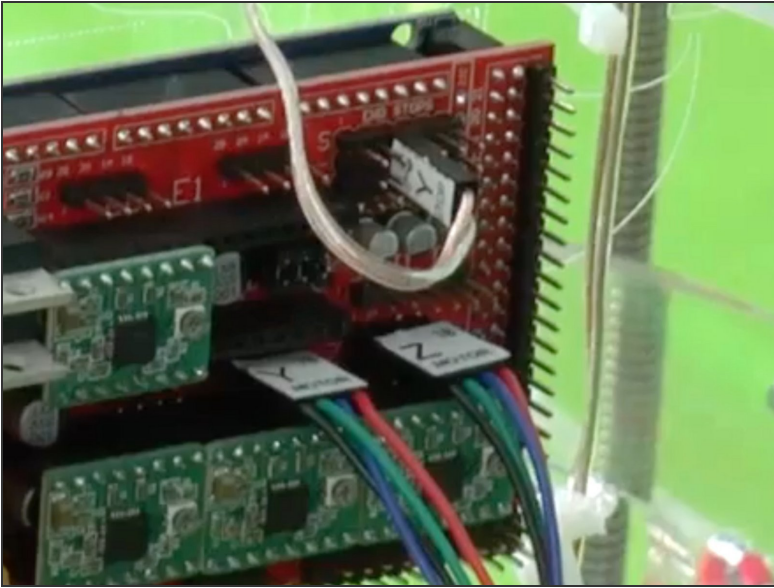
- Snap the Y Motor into place (with the pulley facing down) right under the power supply connector.
- Done :-)

Step 4 — Attach the Y EndStop



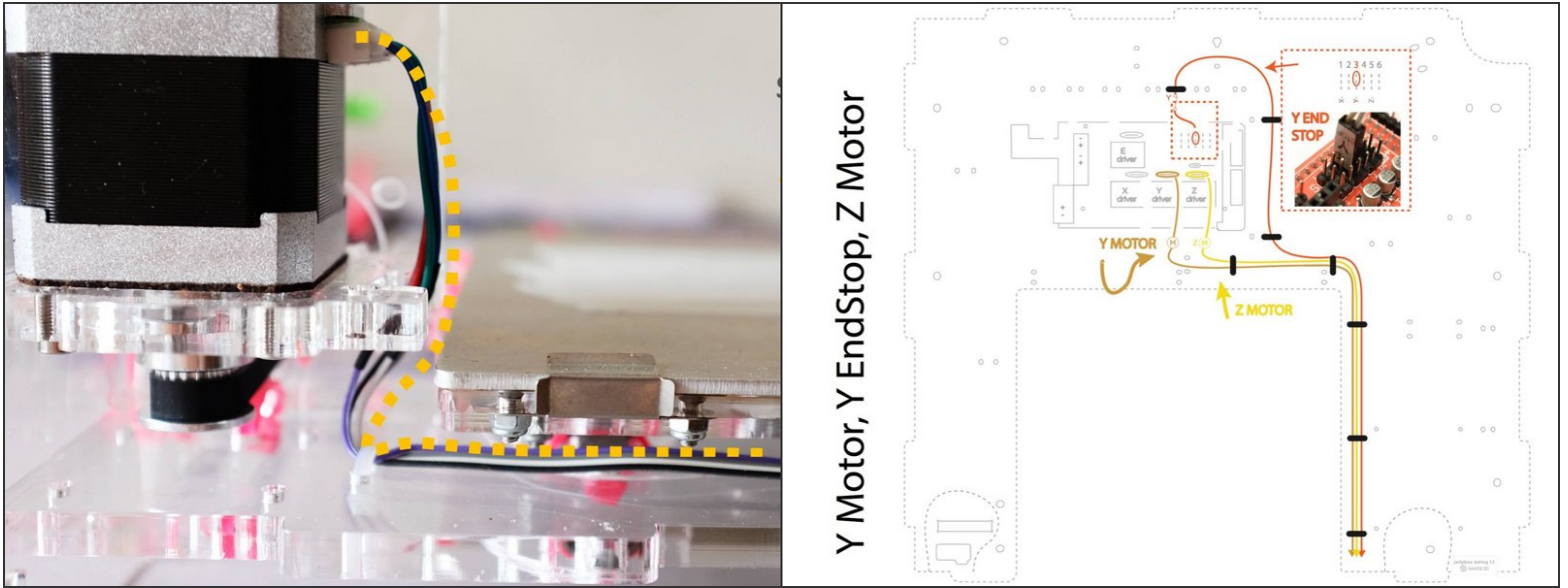
- Get End-Stop Fasteners: M2x16 screw (2), Regular M2 nut (2), Regular M2 washer (2)
- ... and attach the Y EndStop to the acrylic piece. Make sure the head of the screw is on the switch facing down (so that the nut is on the underside)

Step 5 — Wire it All Up



- Y EndStop: Attach the Y EndStop on the third set of pins in the upper row of connectors at the top right (directly above the small "Y" on the Arduino board).
- Z motor: Connect one end of the Z Motor wire where it says "Z" on the Arduino board and the other end to the Z motor.
- Y motor: Connect one end of the Y Motor wire where it says "Z" on the Arduino board and the other end to the Y motor.

Step 6 — Clean it All Up



- It's crucial the Y motor wire is installed so that it cannot come in contact with the bed as it's moving past the wire mounting point.
- Use zip ties to arrange the wire as shown.
- Here is a Subway Style graphic to help you organize the pertinent wires (the thick black blocks signify zip ties).
- Finally, clip the extended part of the zip ties you have used. While clipping the zip ties, make sure you don't clip the wires.