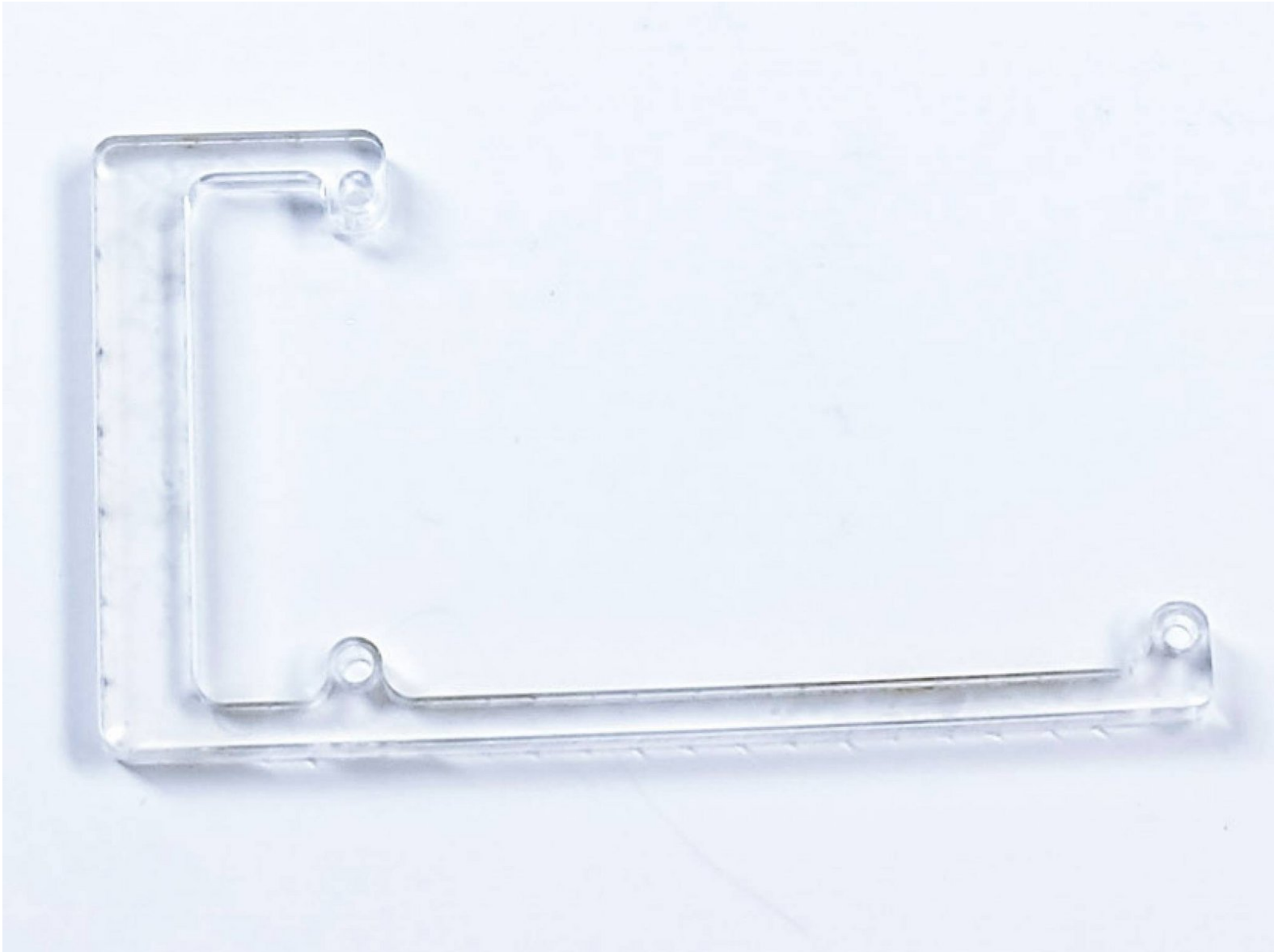




Arduino + RAMPS

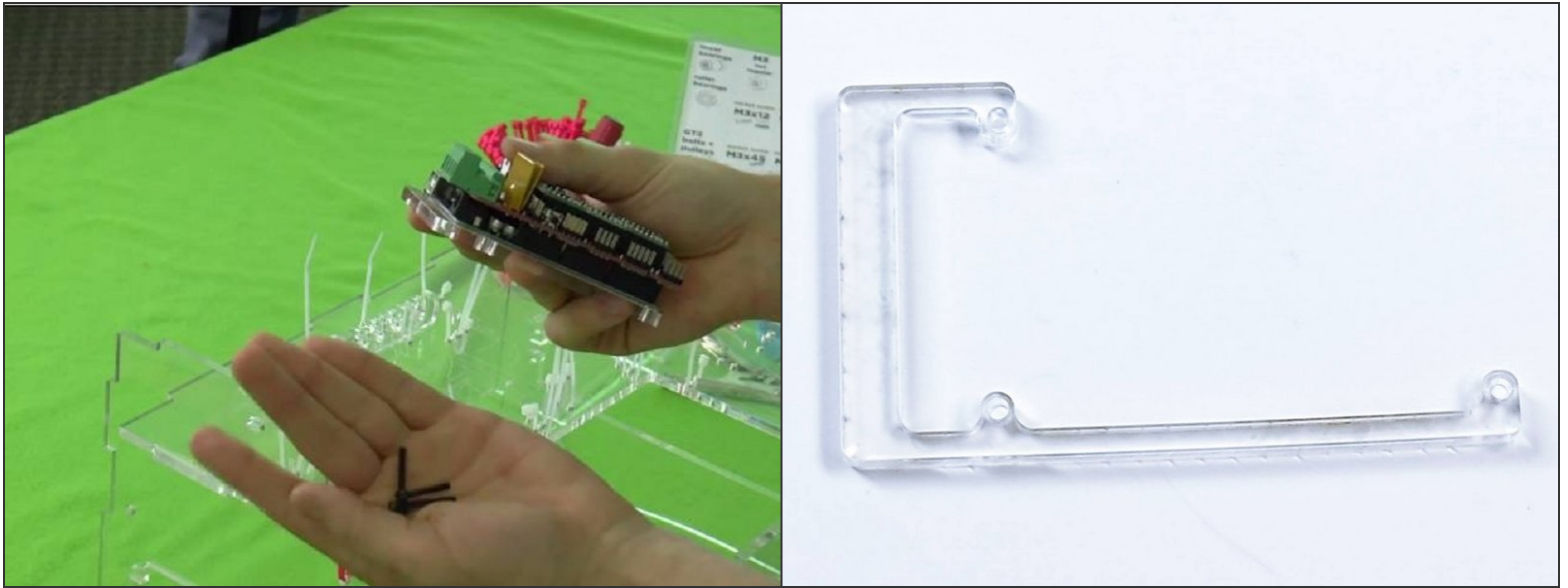
In this guide, we attach the Arduino+RAMPS combo onto the inner back.



INTRODUCTION

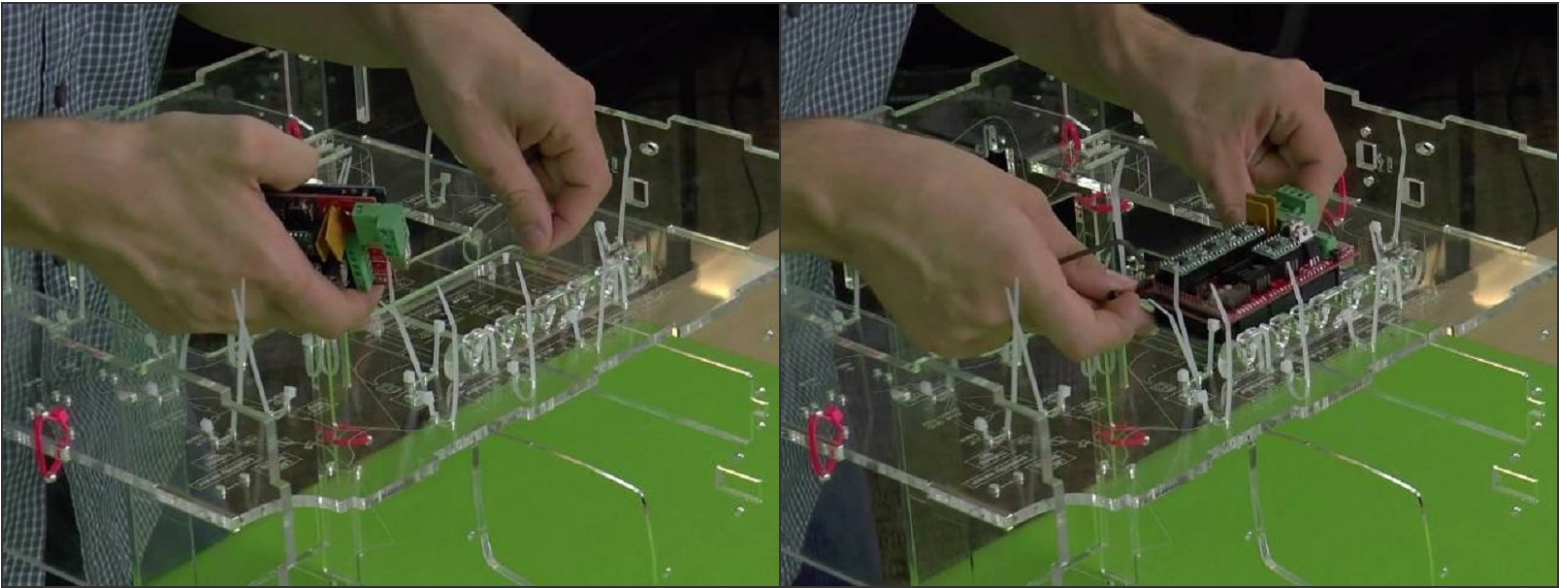
[video: https://youtu.be/oEmiSmojJ_Q]

Step 1 — You'll need:



- Acrylic Arduino spacer
- M3x25 socket screws (3)
- Arduino + RAMPS combo (affectionately known as sandwich)

Step 2 — Attach the Arduino Board



- Sandwich the Arduino board on top of the acrylic spacer with two holes on the left and one on the bottom right.
- Thread through the bolts.
- Align the combo to three holes below the wire comb and tighten the screws gently.
- Gently tighten the screws to avoid damaging the board. The holes are tapped so you do not need much force. You only need to hold it in place against gravity. No stresses here.