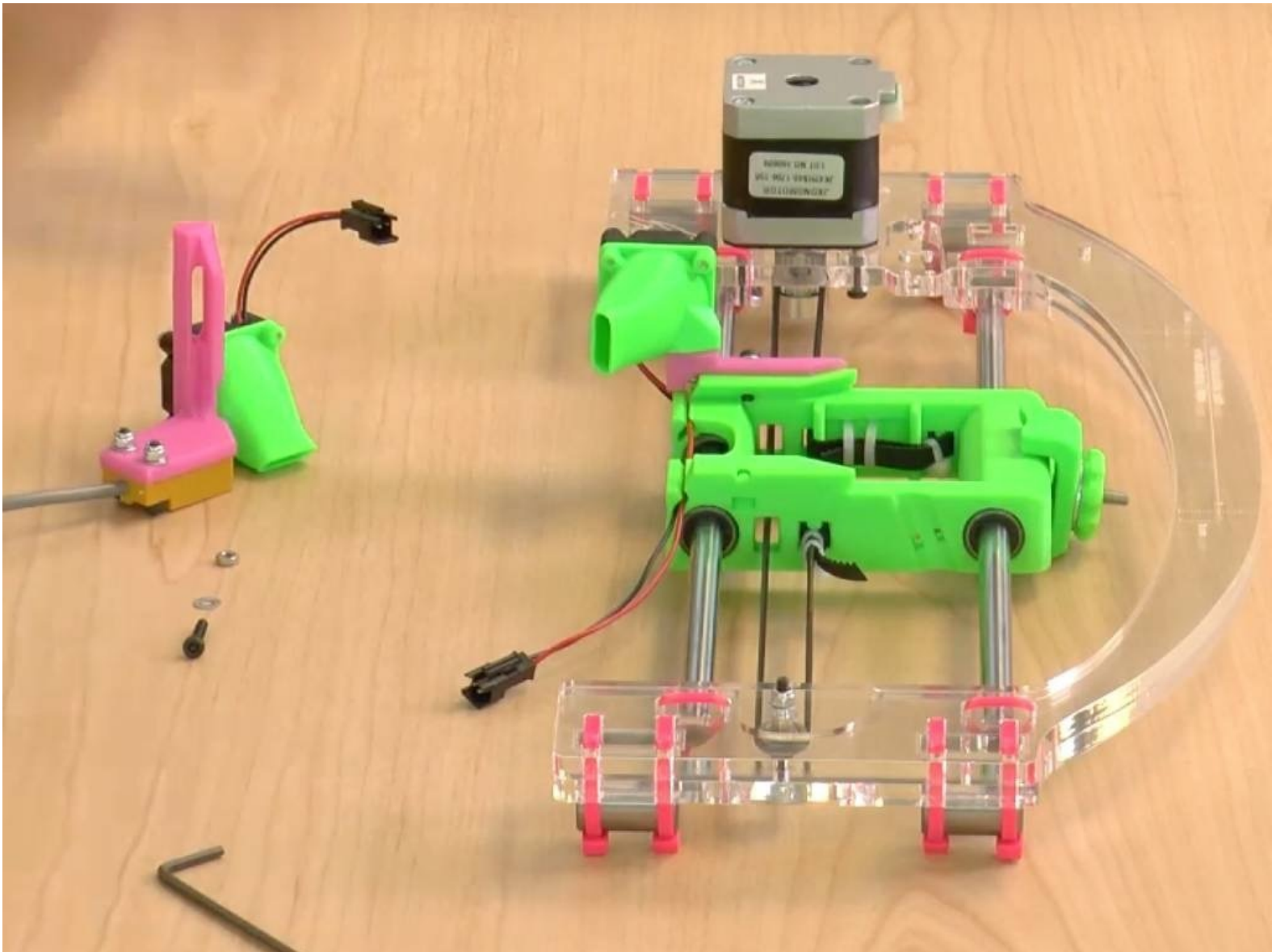




3B. Proximity Sensor + Right Filament Fan

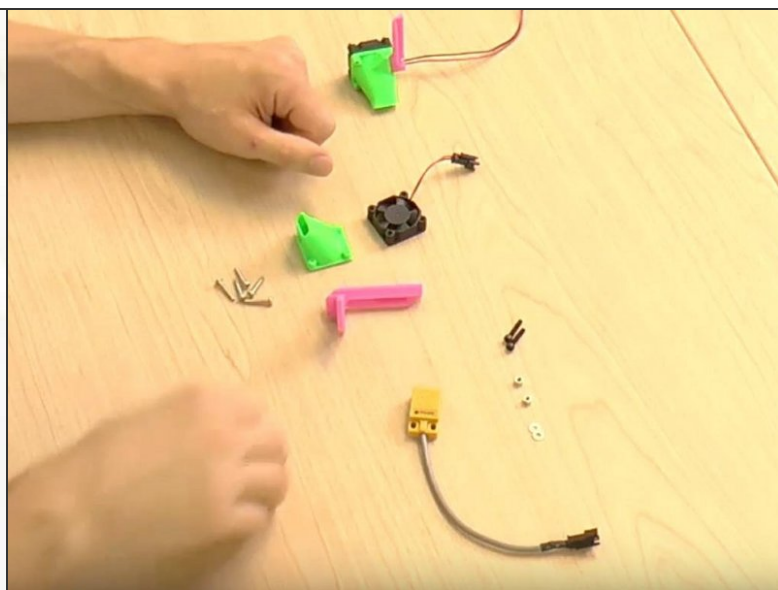
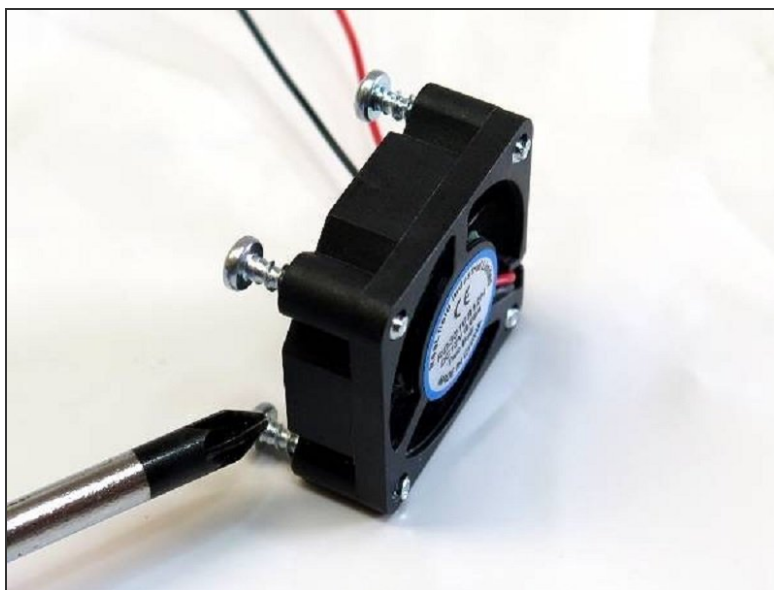
In this guide, we attach the right fans and the proximity sensor to the X carriage. If you do not have the Dual Fan upgrade, please following the Prep X Assembly P.3-A guide instead.



INTRODUCTION

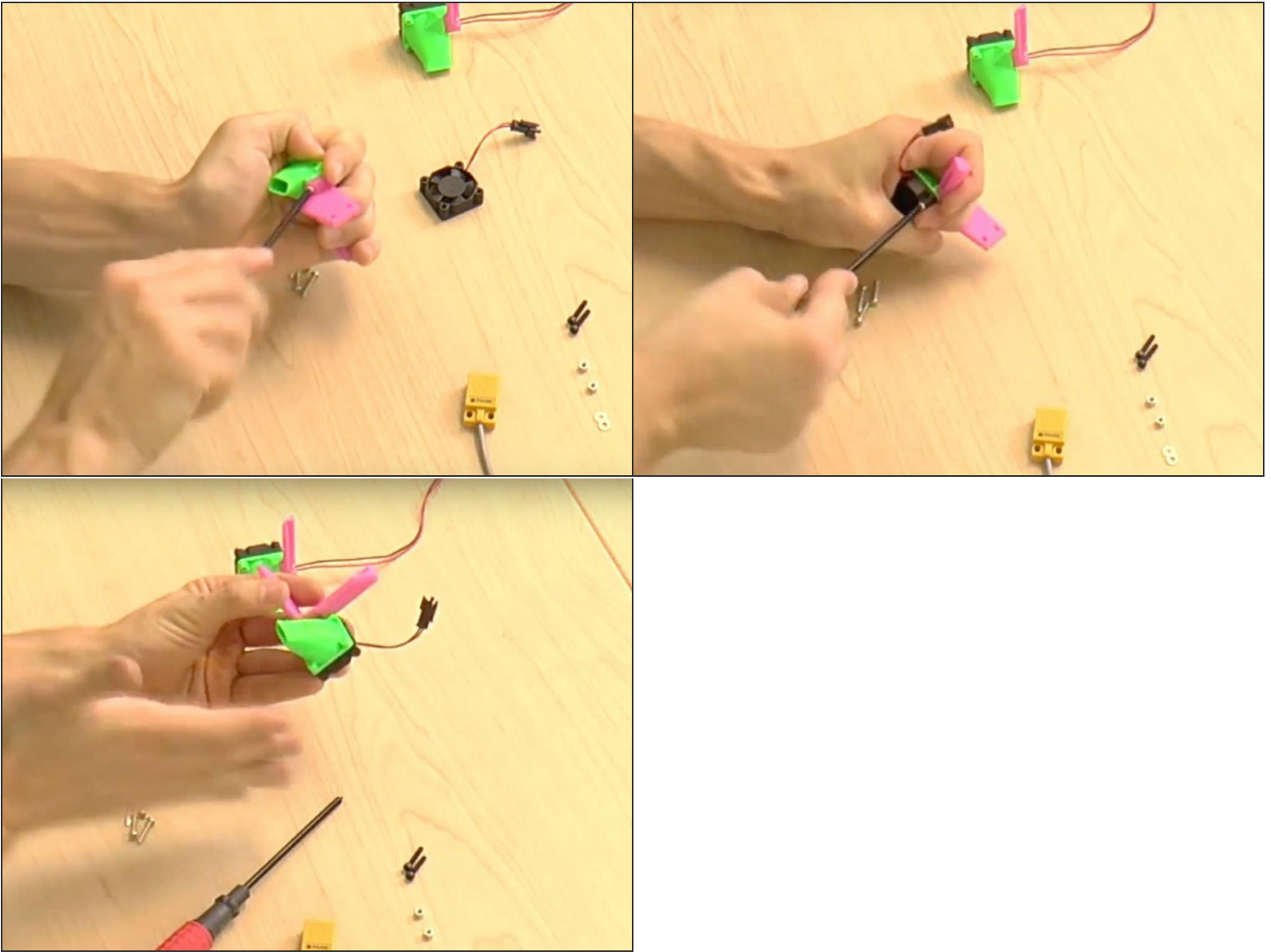
[video: https://youtu.be/q59yprd_IFo]

Step 1 — You'll Need:



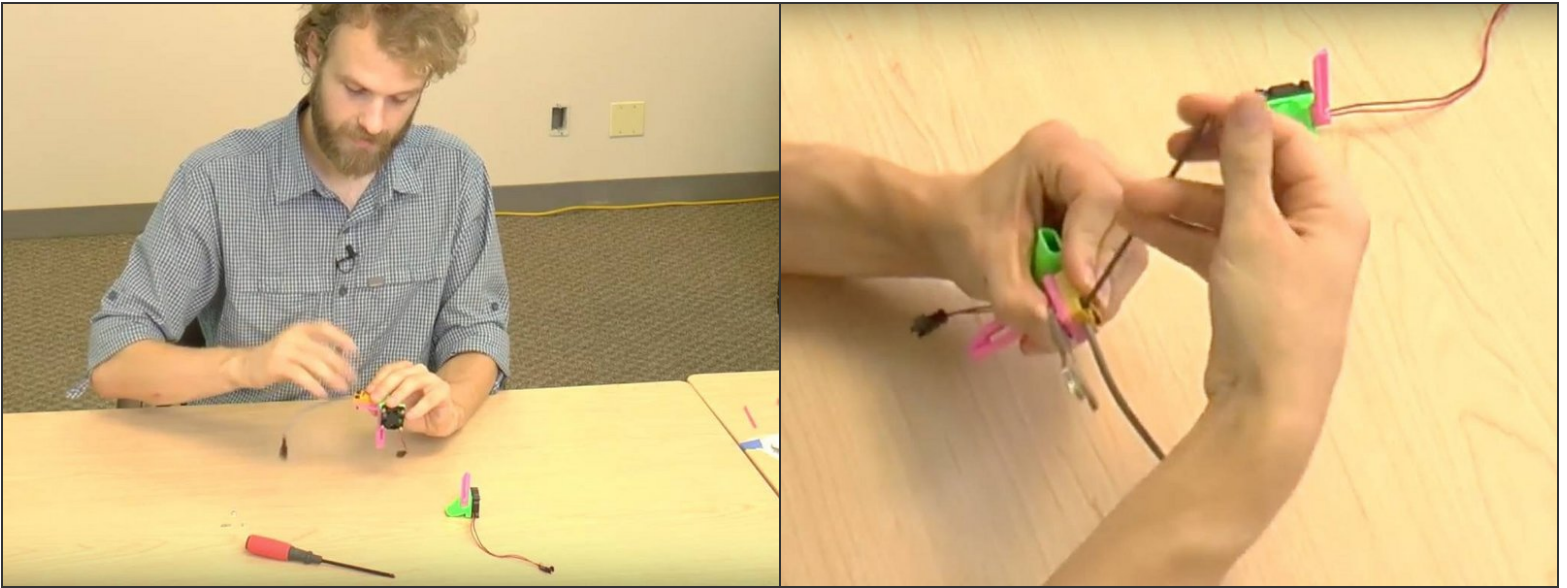
- 30mm fan with a short wire (1)
- Right fan shroud (1)
- Larger fan mount (1)
- Plastite screws (5)
- Proximity Sensor (1)
- M3x16 bolts (2)
- M3 regular washers (2)
- M3 nylon locknuts (2)

Step 2 — Attach the Mount to the Shroud



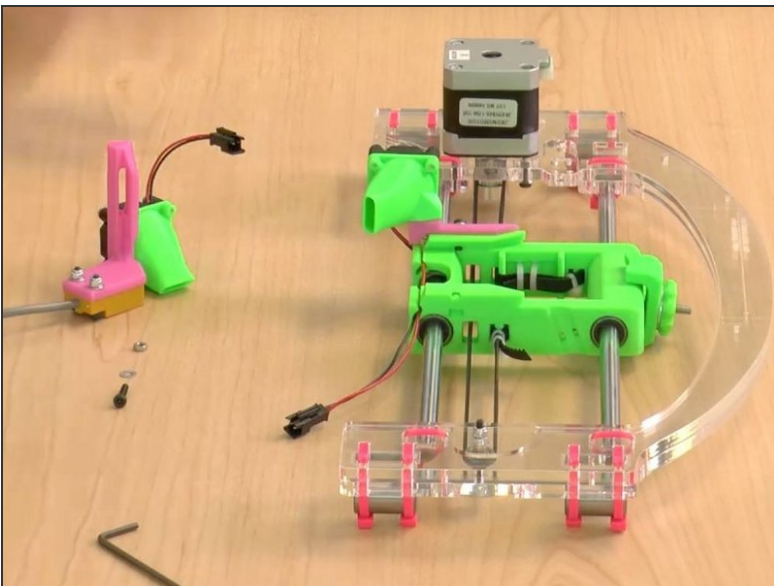
- Attach the large mount onto the side of the shroud with one plastite screw.
- Attach the fan onto the shroud
- As before, tighten the plastite screws in a cross pattern.
- The fan wire should be exiting at the top right when you're looking directly at the shroud; running parallel to the mount. (Consult video if needed)

Step 3 — Attach the Proximity Sensor



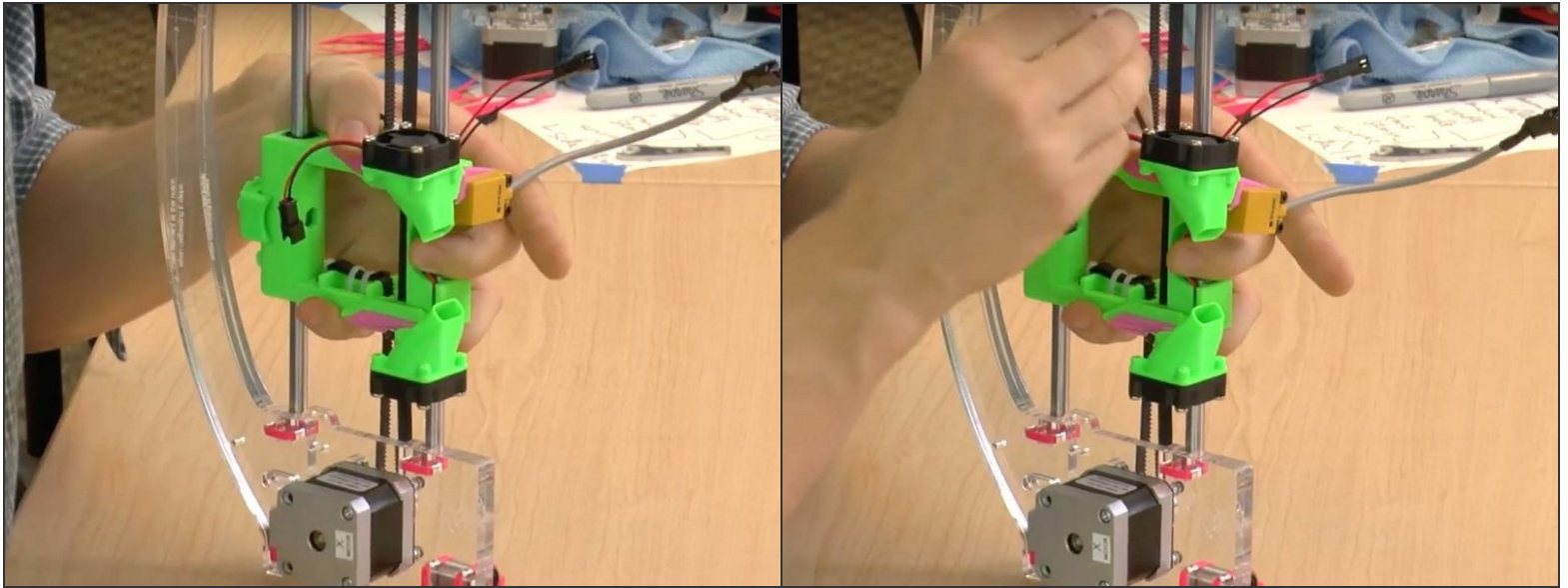
- Attach the sensor to the bottom of the mount with two M3x16 screws.
- Tighten with two M3 regular washers and M3 nylon locknuts. The bolt heads should be on the sensor side.

Step 4 — To Attach the Right Fan You'll Need:



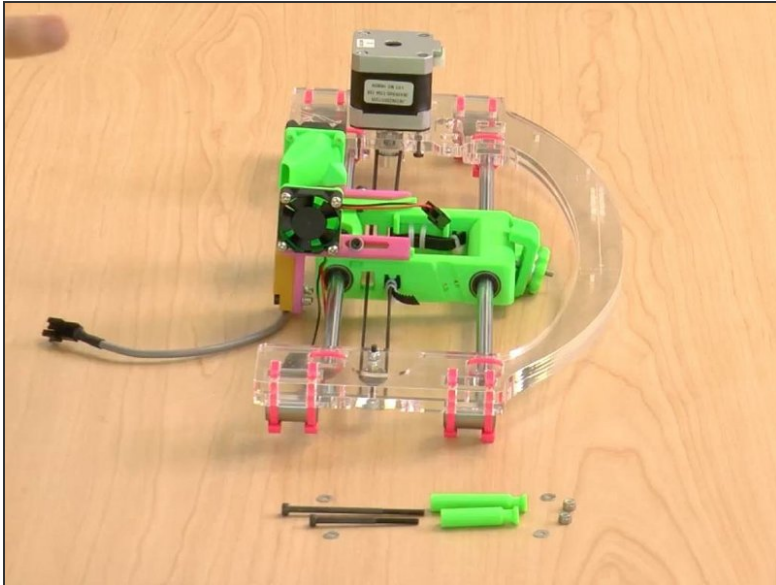
- X Assembly (1)
- Right Fan Assembly (1)
- M3x16 bolt (1)
- M3 regular washer (1)
- M3 regular bolt (1)

Step 5 — Attach the Right Fan onto the Carriage



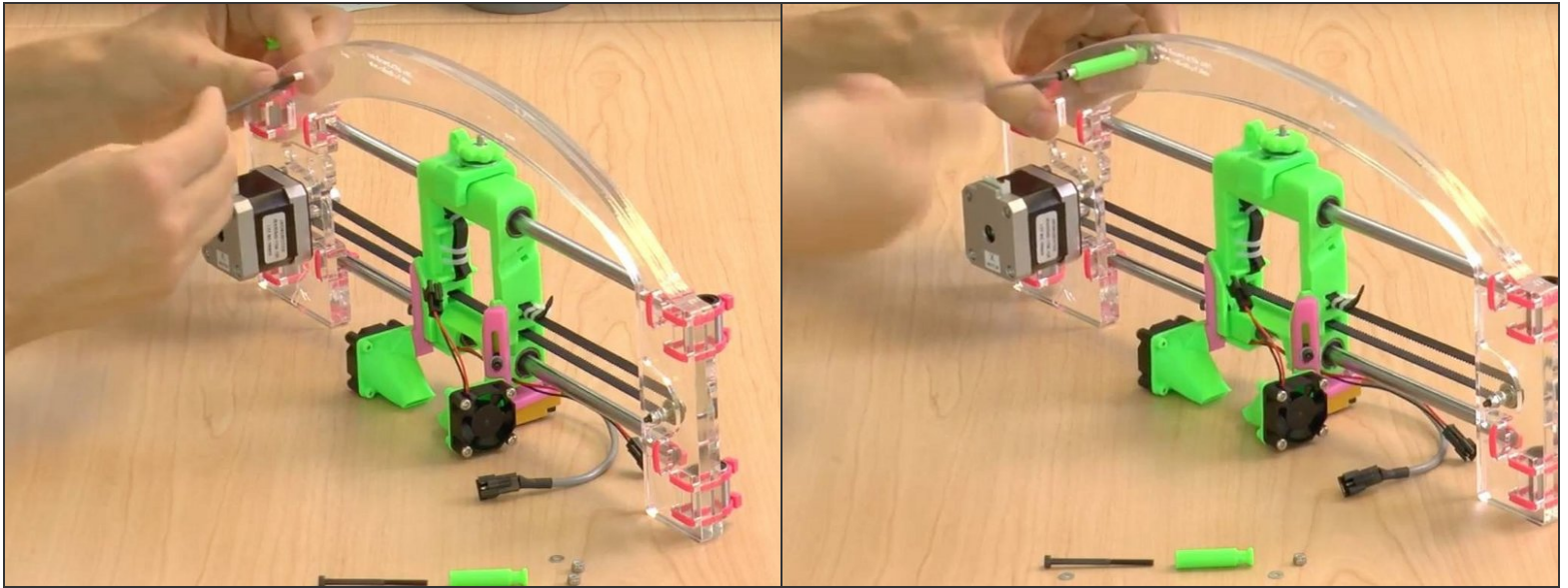
- We repeat the procedure we used for the left fan, but with a longer bolt.
- Place a washer onto the M3x16 bolt and insert it into the slot on the fan mount.
- Place a regular M3 nut into the slot on the right side of the carriage.
- Insert the bolt and tighten with an M3 hex key.

Step 6 — For Attaching the Wire Spacers You'll Need:



- Short Spacer (1)
- Long Spacer (1)
- M3x45 bolt (1)
- M3x60 bolt (1)
- M3 regular washer (4)
- M3 nylon lock nut (2)

Step 7 — Attaching the Long Spacer to the X Assembly



- Put an M3 washer onto the M3x60 bolt.
- Insert the M3x60 into the hole at the top left of the X assembly acrylic.
- Slide the long spacer onto the bolt with the grooved end pointing away from the assembly.
- Place another washer and an M3 nylon lock nut onto the bolt.
- Tighten it up with a wrench and an M3 hex key. The image may look confusing because you can see through the acrylic. Consult the video walkthrough if necessary.

Step 8 — Attaching the Short Spacer to the X Carriage

- As before with the longer spacer, place an M3 washer onto the M3x45 bolt.
- Insert the bolt through the hole on top of the X carriage.
- Add the short spacer, grooved end pointing away.
- Add the M3 washer and M3 nylon lock nut, and tighten with a wrench and M3 hex key.