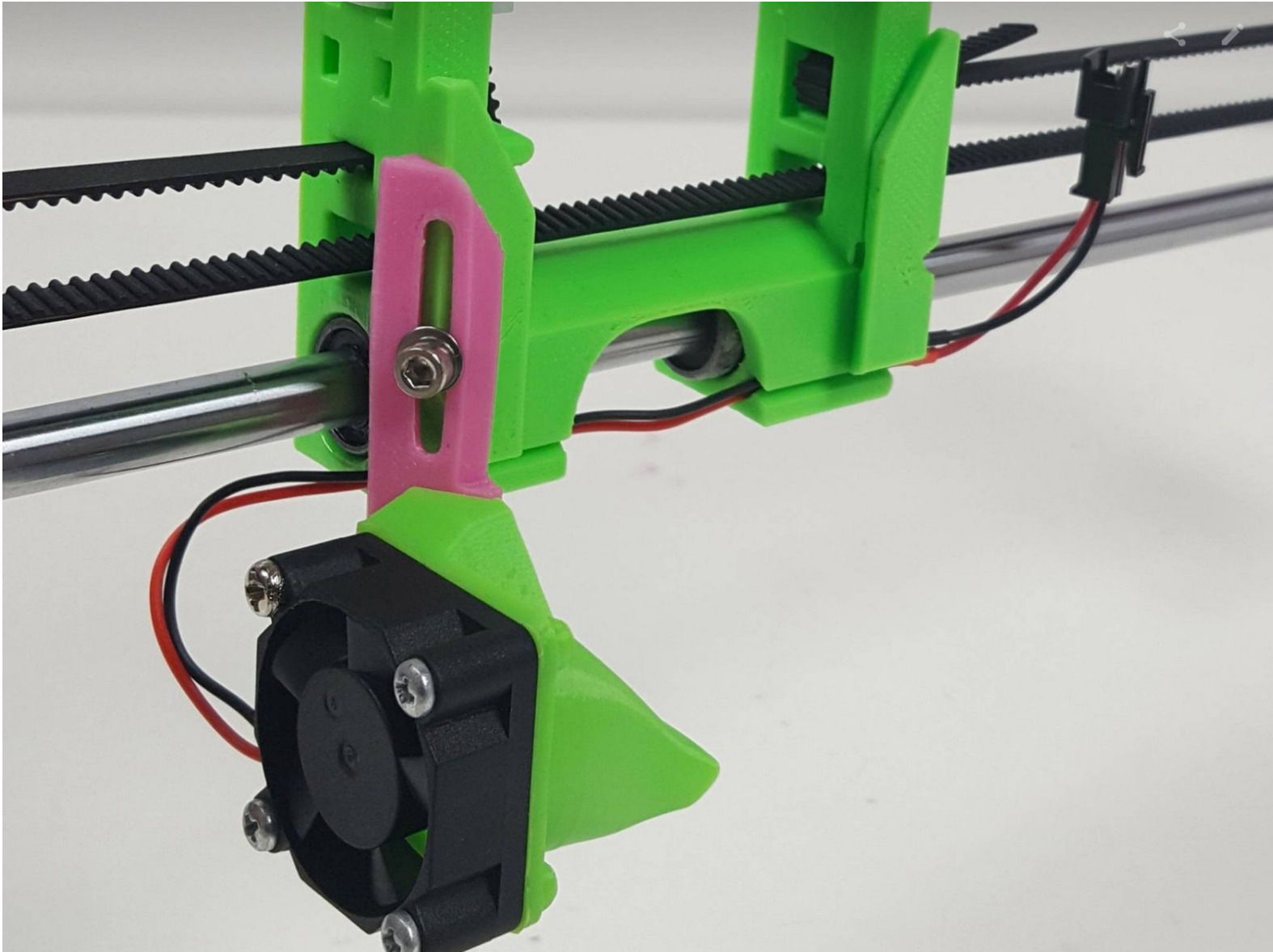




## 2. Left Filament Fan

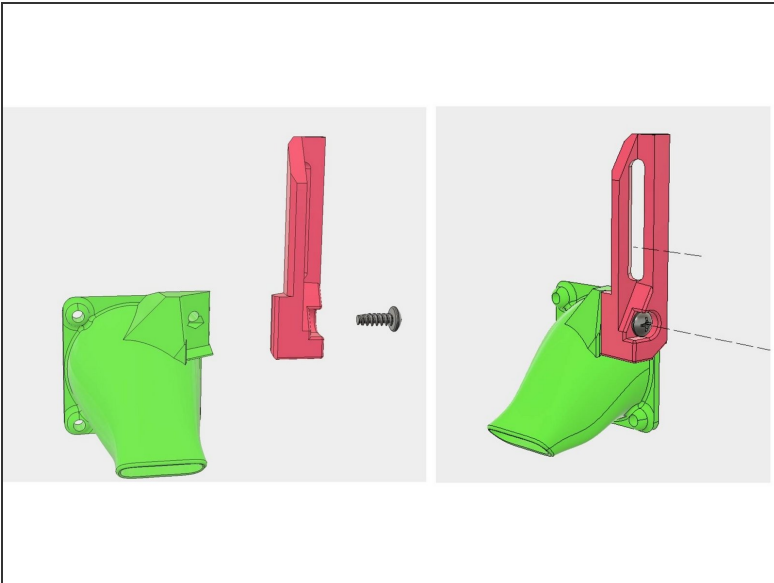
In this guide, we attach Left filament fan to the X carriage.



## Step 1 — You'll Need:

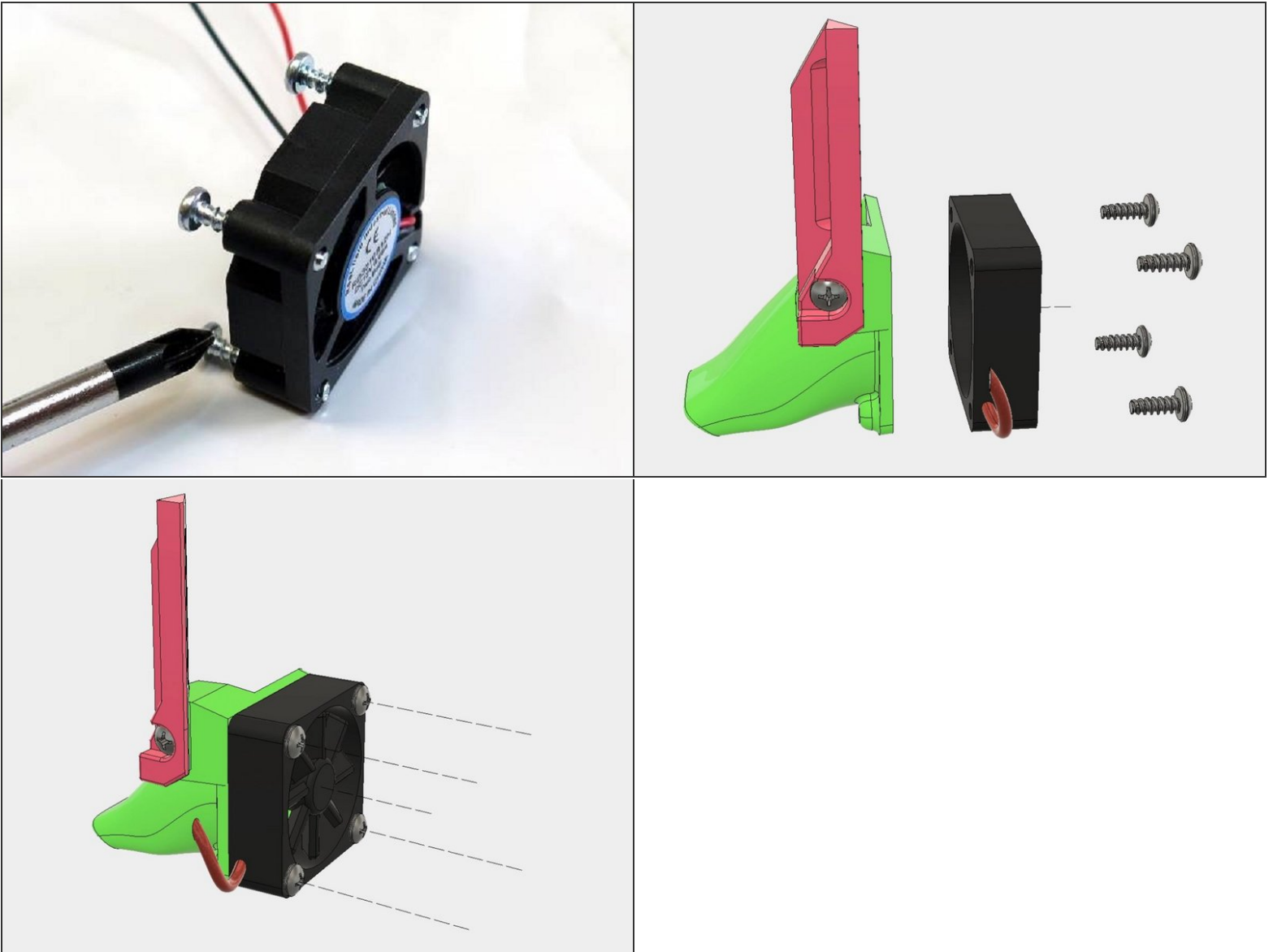
- Green left filament fan shroud
- Pink left filament fan mount
- Plastite screw (5)
- 30mm fan
- Alert: If you're building Dual Fan JellyBOX, use the 30mm fan with a long wire.

## Step 2 — Left Filament Fan P.1



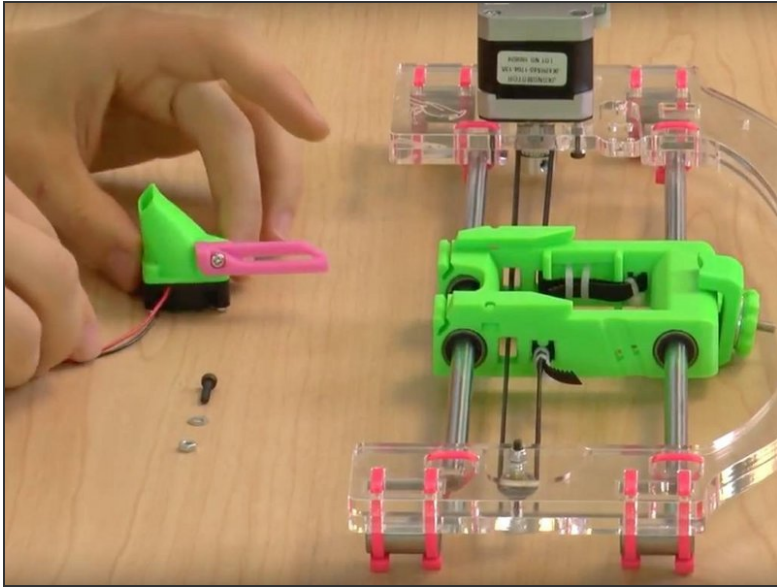
- Connect the green filament fan shroud and the pink shroud mount with a single plastite screw.

### Step 3 — Left Filament Fan P.2



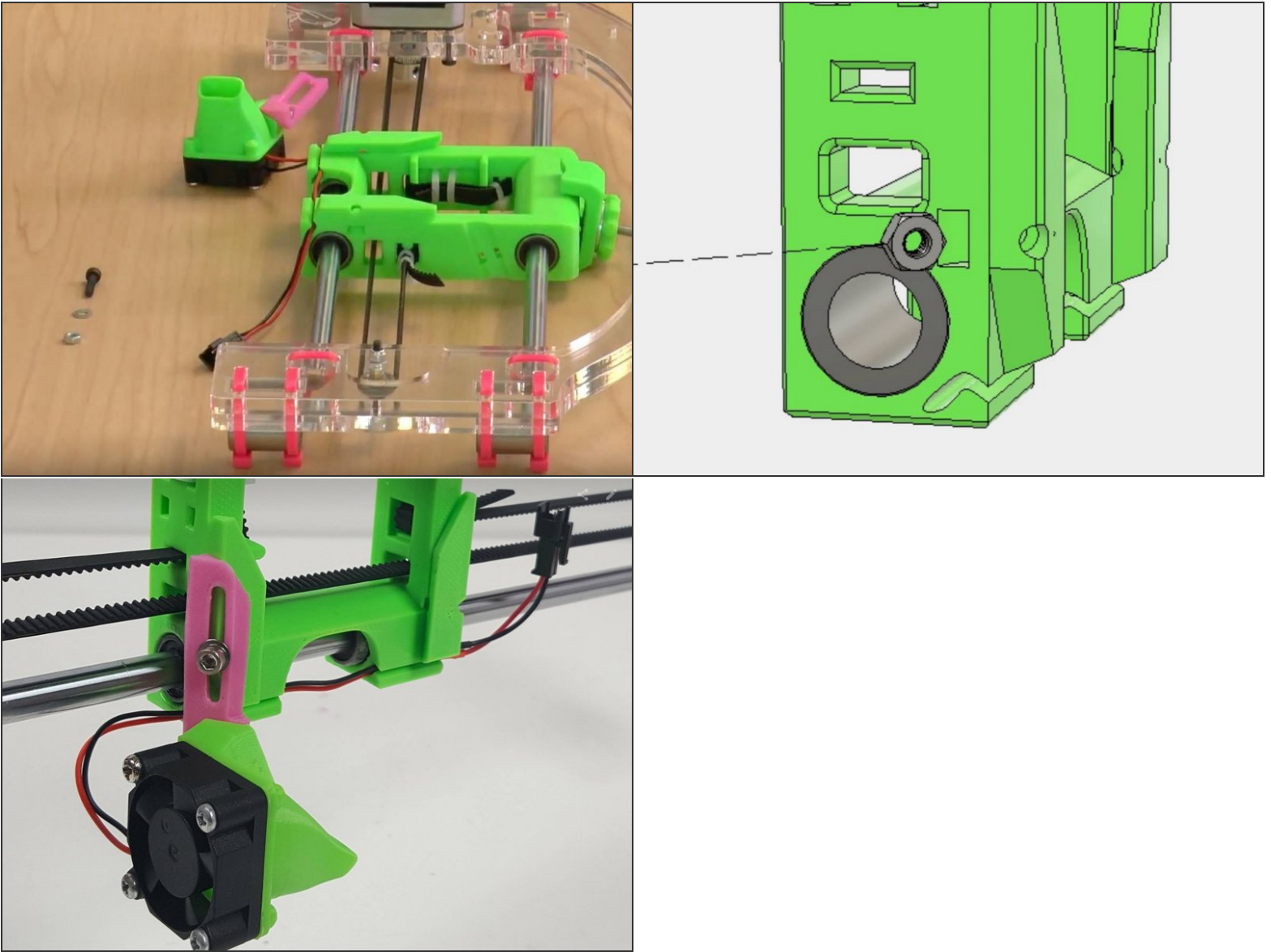
- Attach a small 30mm filament fan to the shroud with four plastite screws. Pay attention to the orientation of the fan in reference to the fan cable. Align the fan so that the wires extend to the lower right when looking straight at the shroud.

## Step 4 — What You'll Need to Attach the Fan to the X Assembly:



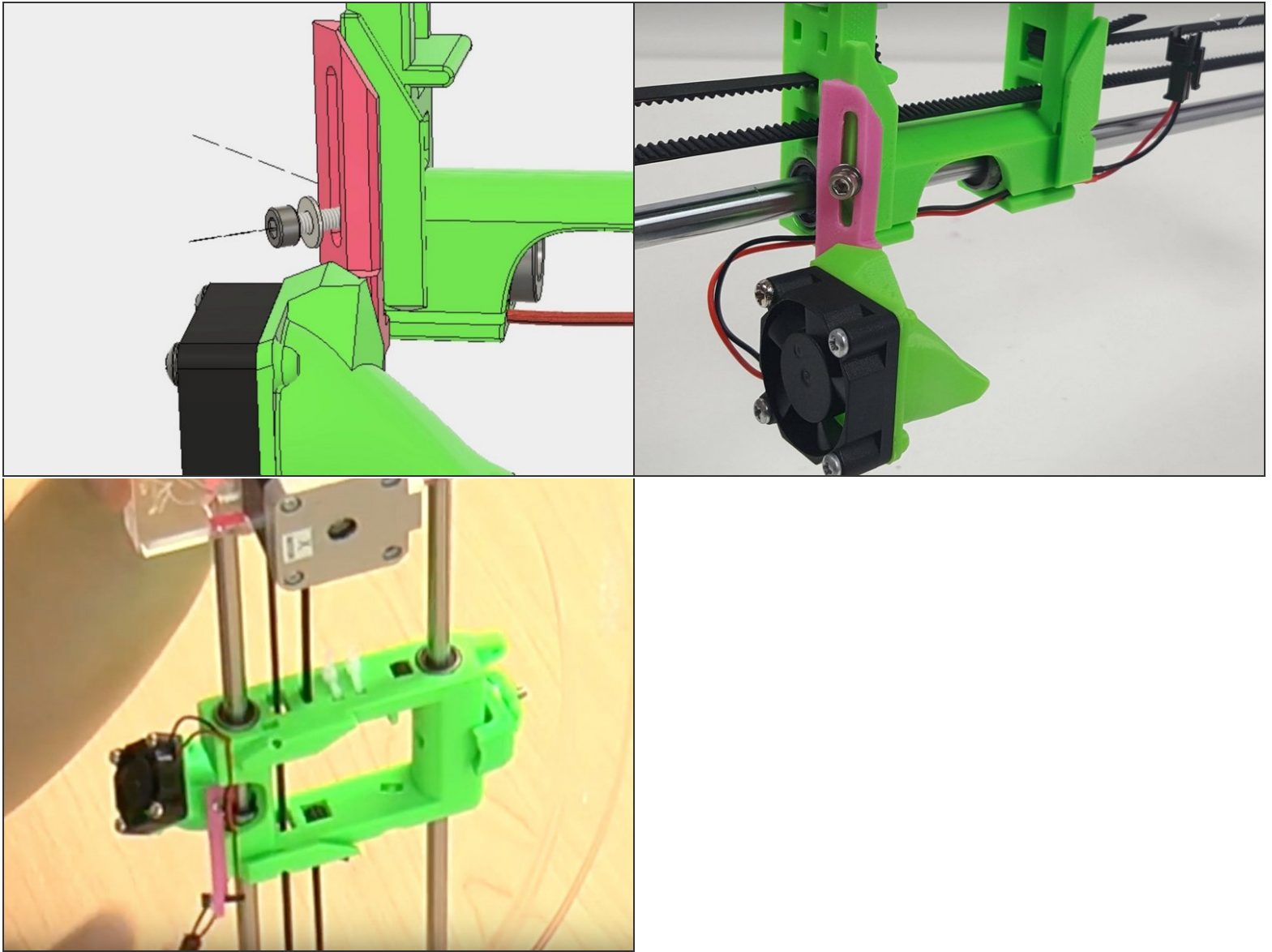
- X Assembly (1)
- Left Fan Assembly (1)
- M3x12 socket screw (1)
- M3 regular washer (1)
- M3 regular nut (1)

## Step 5 — Run the Wire Through the X Carriage



- Place the wire from the fan in the slot running along the bottom of the carriage.
- Insert a regular M3 nut into the slot on the side of the X-carriage. It helps if you turn the X-assembly sideways to prevent gravity from pulling the nut out again.

## Step 6 — Place M3 Nut in the X Carriage



- Place a regular M3 nut in the slot on the left side of the X carriage next to the belt. Pro Tip: turn the x assembly on a side and let the gravity do the work for you. Drop in the nut with tweezers.
- Attach the Left Fan to the X Carriage with an M3x12 bolt and M3 washer.
- The M3x12 bolt in the fan mount reaches through to the nut in the slot. Tighten it using an M3 hex key.