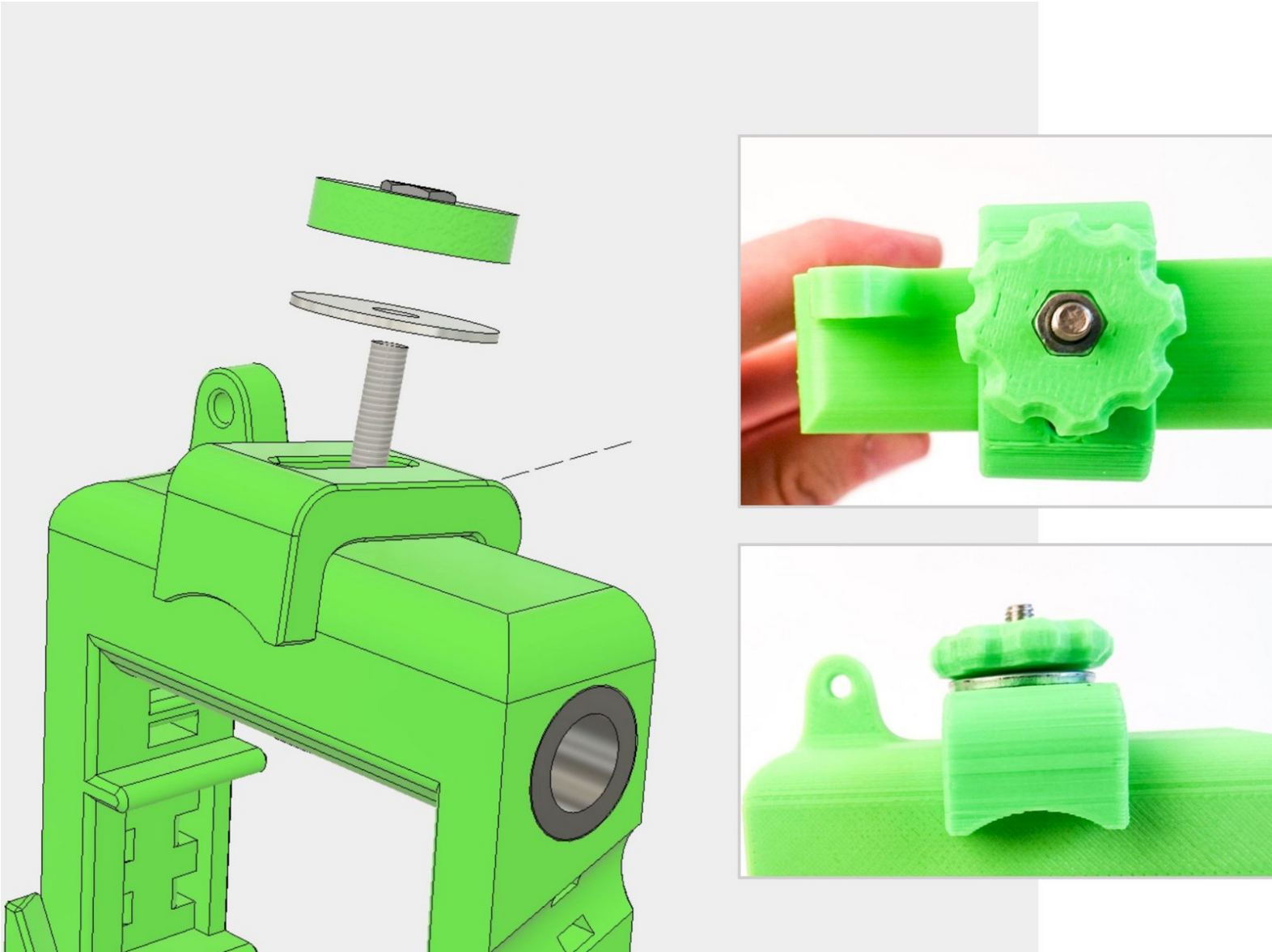




X Carriage Assembly

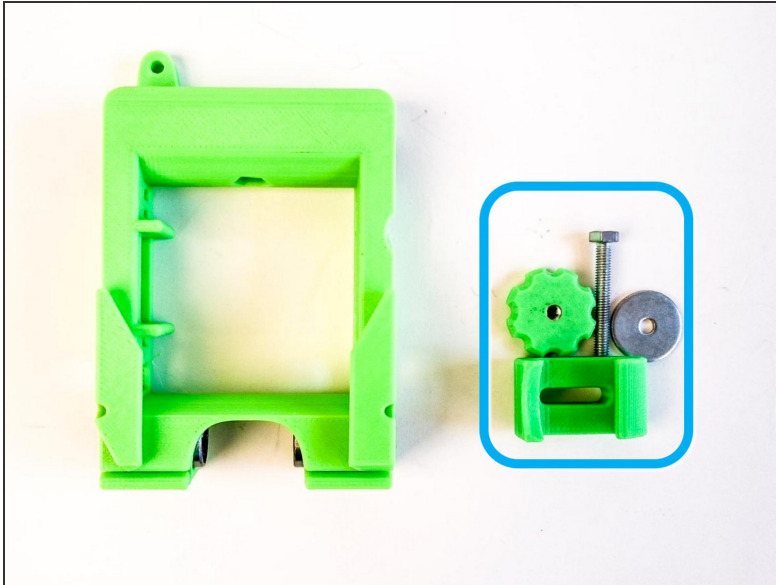
In this guide, we build the X-carriage.



INTRODUCTION

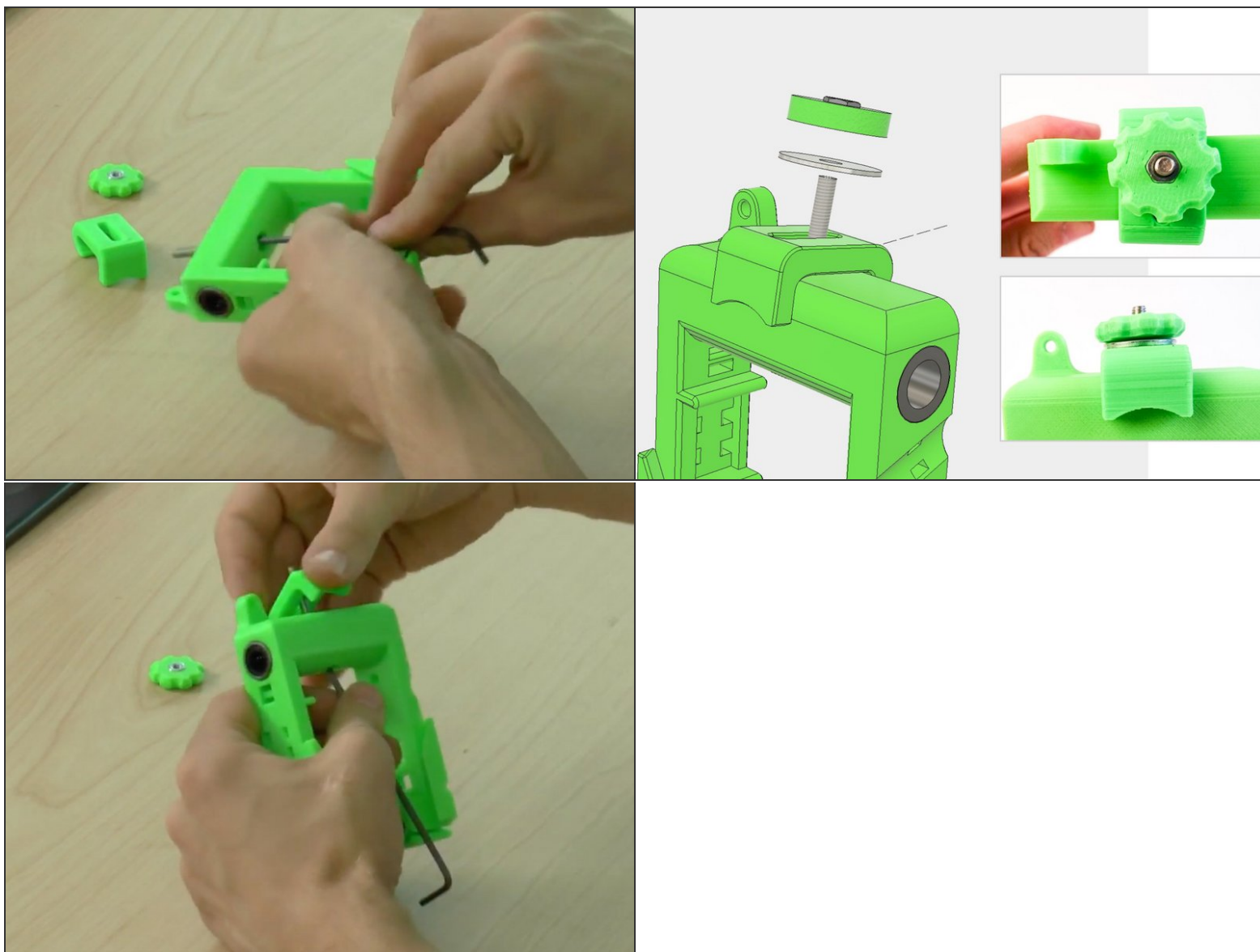
[video: <https://youtu.be/2Qe2kCSdXsw>]

Step 1 — You'll Need



- X carriage
- Quick release clamp
- Quick release knob
- M4 oversize washer
- M4x25 hex head bolt
- Any hex key

Step 2 — Prep the X Carriage



- Drive the bolt through the hexagonal hole inside the carriage in upwards direction.
- Slide the quick release clamp over the bolt.
- Put the M4 oversize washer onto the bolt.
- Finger-tighten in place with the M4 knob. Pro Tip: Use a hex key to hold the bolt in place