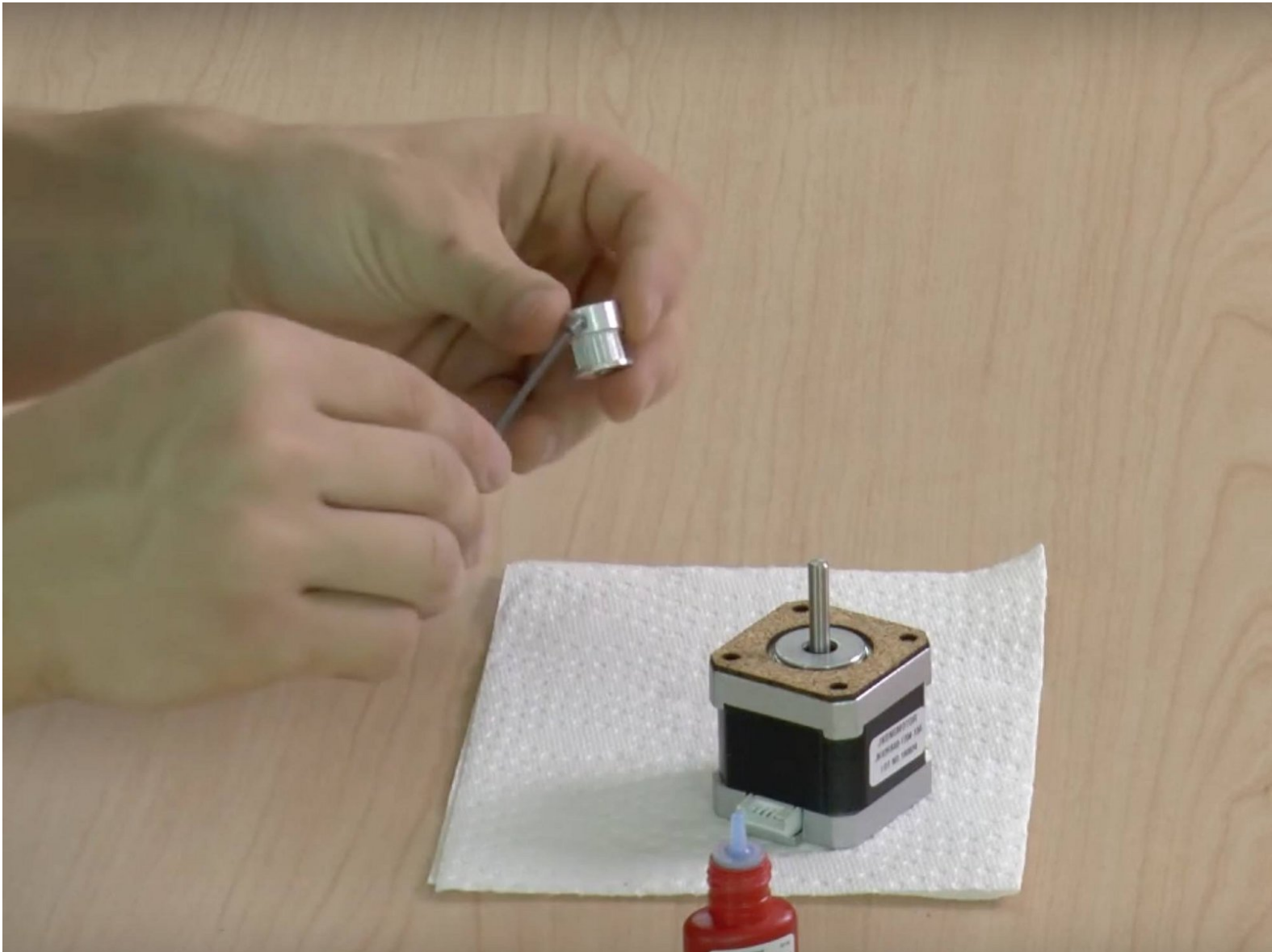




X and Y Pulley Threadlocking

In this guide, we put thread lock on the set screws in belt pulley, and install these pulleys on X and Y motors.



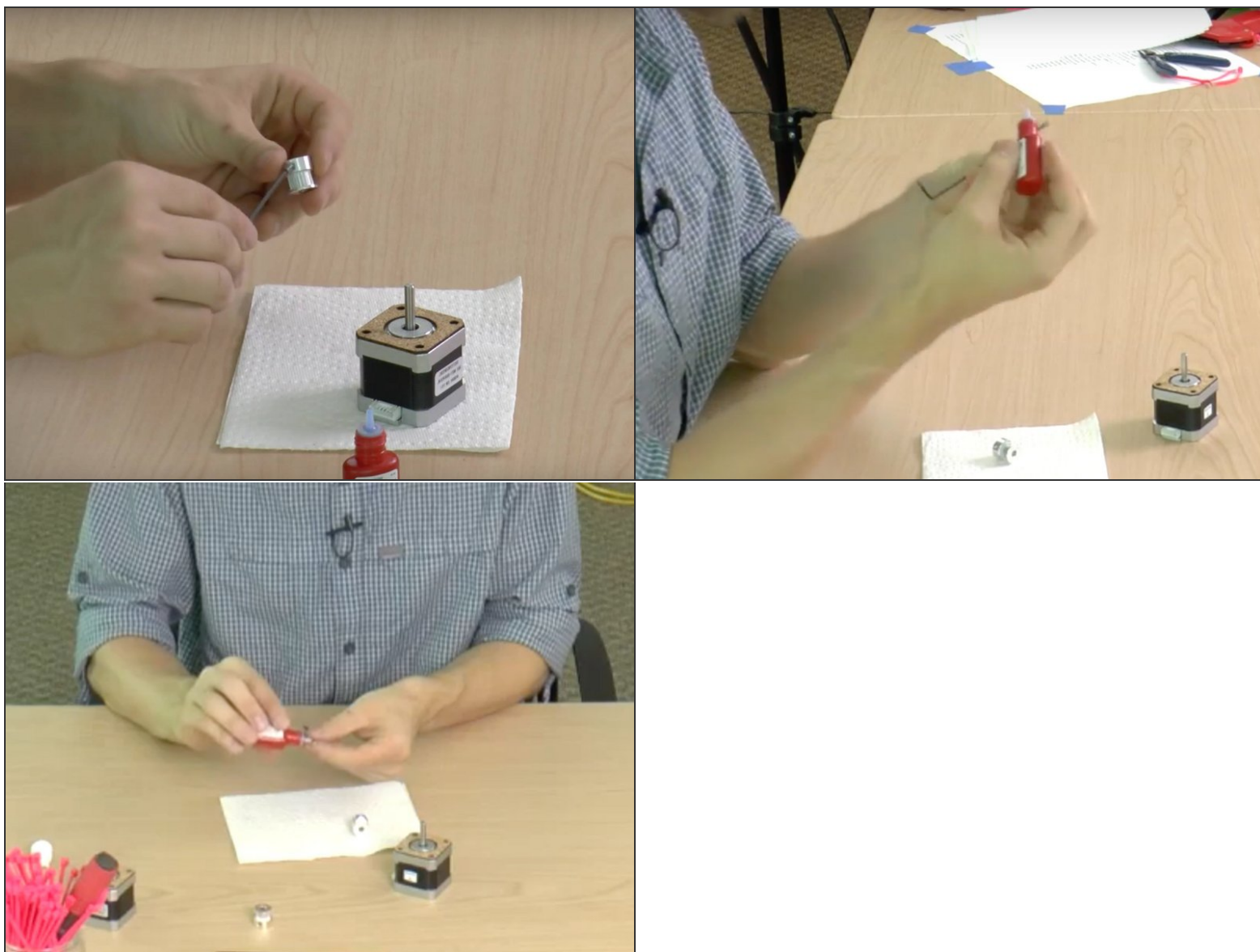
INTRODUCTION

X and Y motors and pulleys are all identical components, but the X pulley needs to be installed differently than the Y pulley.

Video Link

[video: <https://youtu.be/lxrcB2a7PZc>]

Step 1 — Y Pulley Thread Lock P.1



- Take out two set screws out of a pulley using a hex key.
- Put a single small drop of thread lock onto the set screw thread.
- Spread the thread lock into the thread. Do not use too much thread lock. Little is enough. Wipe excess if necessary. Tip: Keep the set screw on the hex key for easy manipulation.

Step 2 — Y Pulley Thread Lock P.2



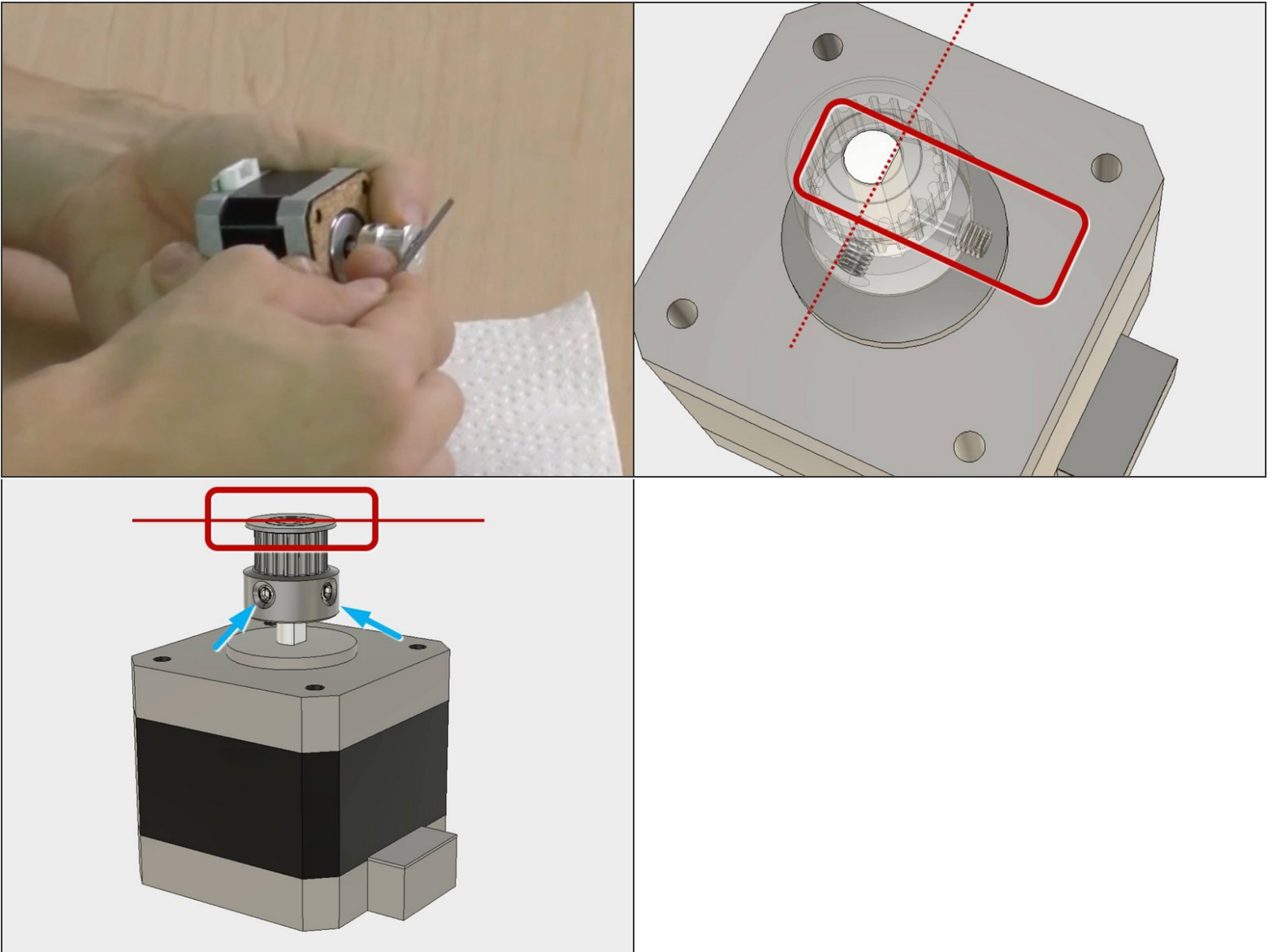
- Re-insert the set screws into the pulley. Repeat procedure for both set screws.

Step 3 — The Y Pulley Goes onto the Y Motor



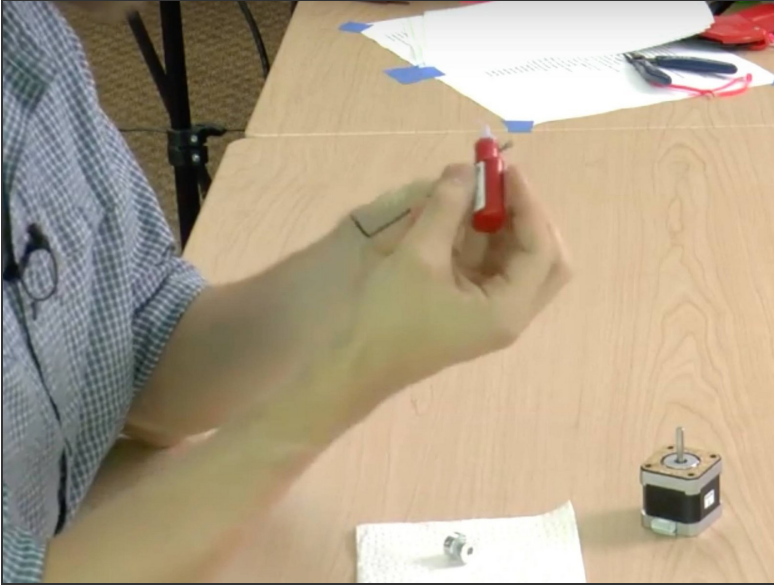
- Slide the Y pulley onto the Y motor shaft.
- The thin flange side of the pulley faces away from the motor - towards the top of the motor shaft.

Step 4 — Align and Tighten Y Pulley



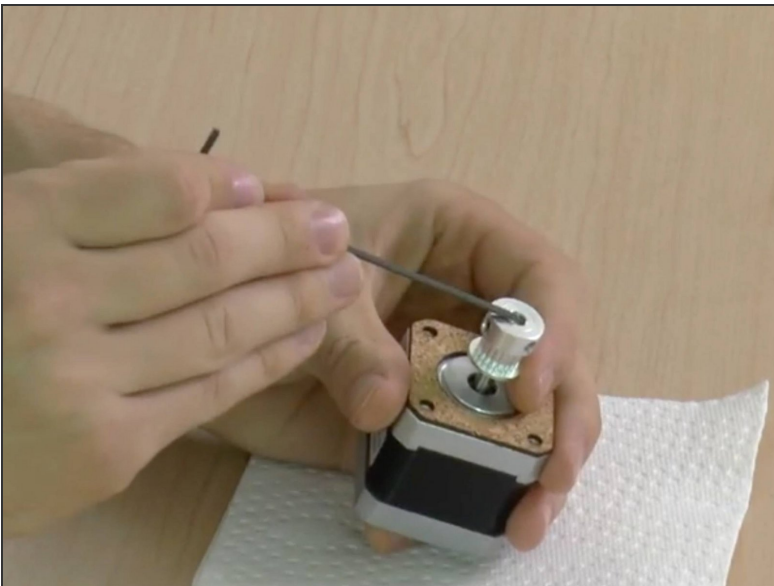
- Align the top of the shaft with the top of the pulley.
- Tighten the set screws well. Tighten as much as you can without damaging the thread (so called 'stripping'). Make sure one of the set screws is against the flat side of the motor shaft. This prevents the pulley from spinning around.

Step 5 — X Pulley Thread Lock



- Same as putting the thread lock onto the Y Pulley set screws. Take out two set screws out of the pulley, put thread lock into their threads, and put them back into the pulley.

Step 6 — The X Pulley Goes onto the X Motor



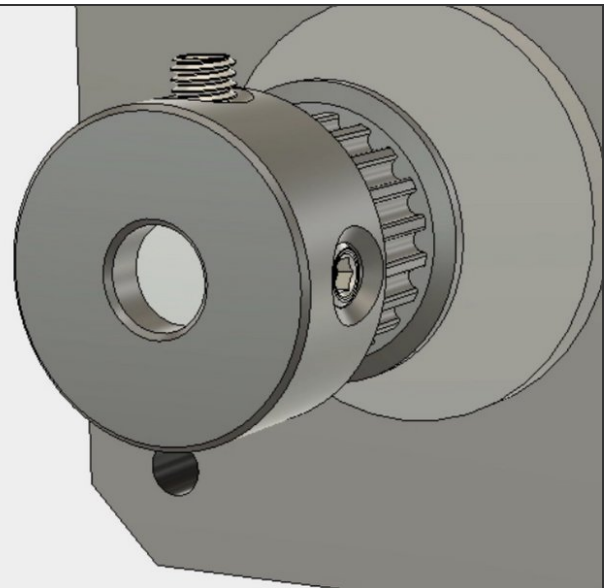
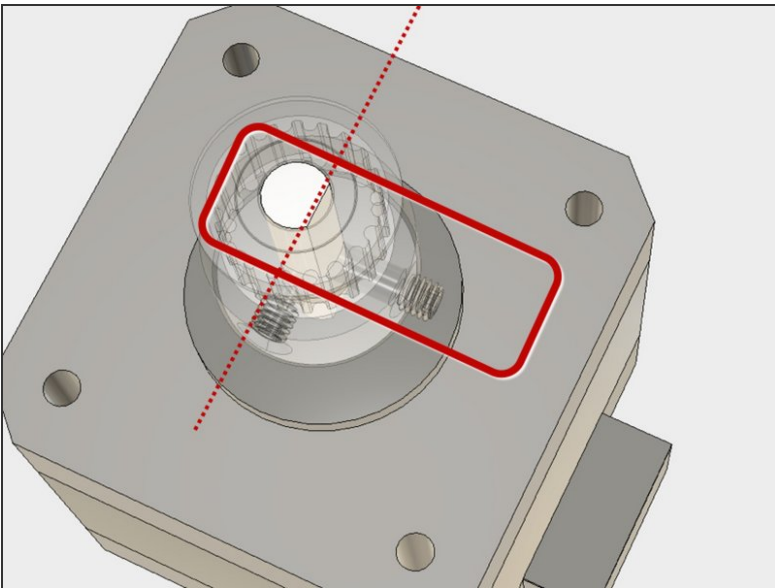
- This X motor pulley alignment is very different from Y motor pulley. Follow the instructions closely.
- Slide the X pulley onto the Y motor shaft. The thin flange side of the pulley faces the motor this time (the opposite from Y pulley on Y motor.)

Step 7 — Align and Tighten the X Pulley P.1



- Slide the pulley as far away from the motor as you can. Yet the set screws should still fully grip the motor shaft. The X pulley will be extending about 3mm (0.12") beyond the top of the X motor shaft.

Step 8 — Align and Tighten the X Pulley P.1



- Tighten as much as you can without damaging the thread (so called 'stripping'). Make sure one of the set screws is against the flat side of the motor shaft. This prevents the pulley from spinning around.

Step 9 — no images test

- bullet1
- bullet2