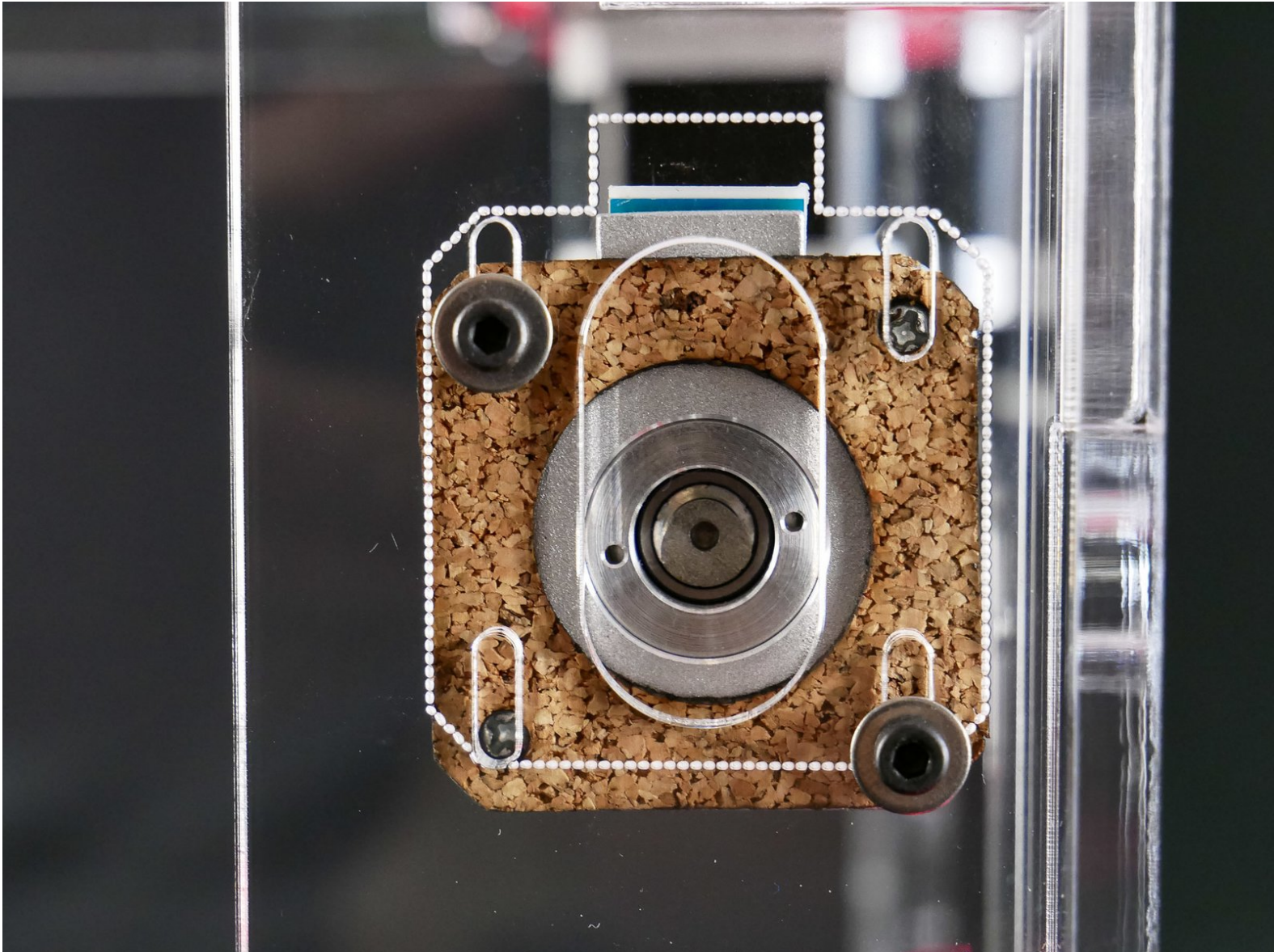




01. Install the Z Motor

Install the Z Motor



Step 1 — ↳ Install the Z Motor

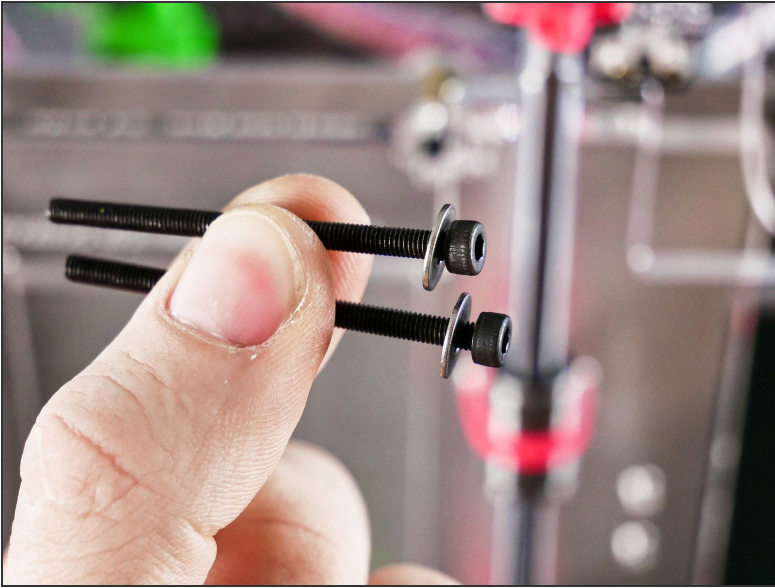


Step 2

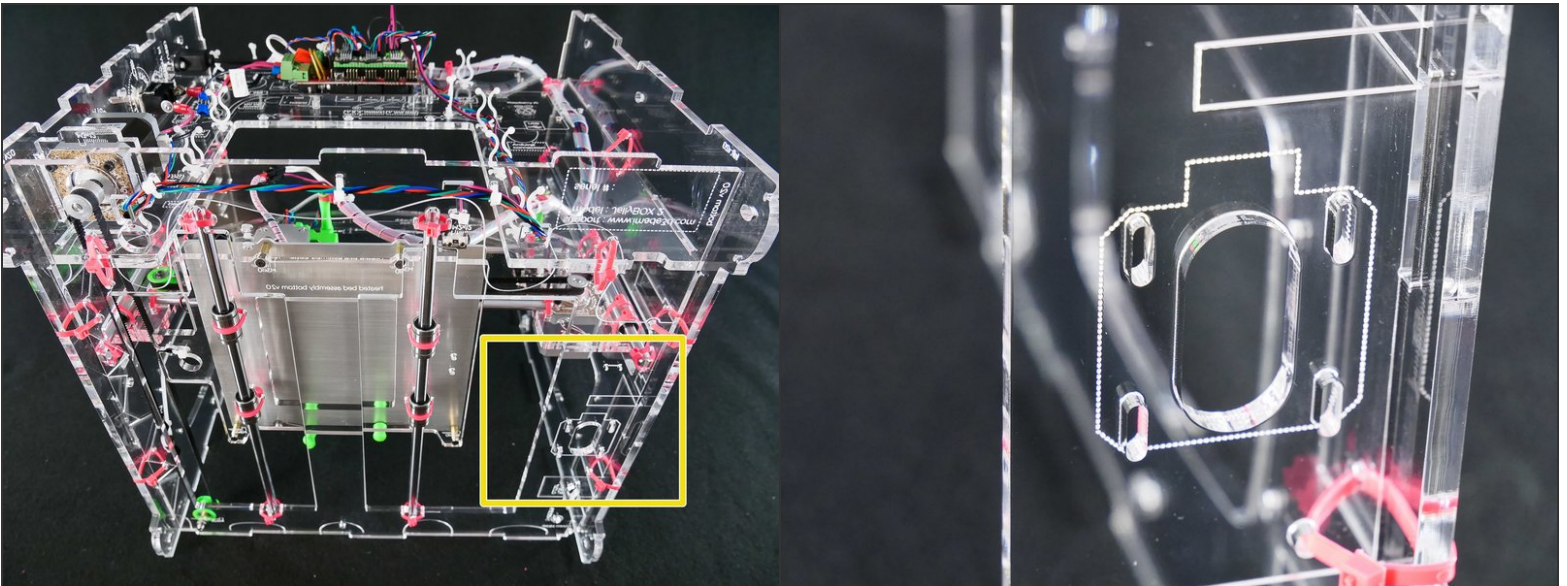


- M3x45

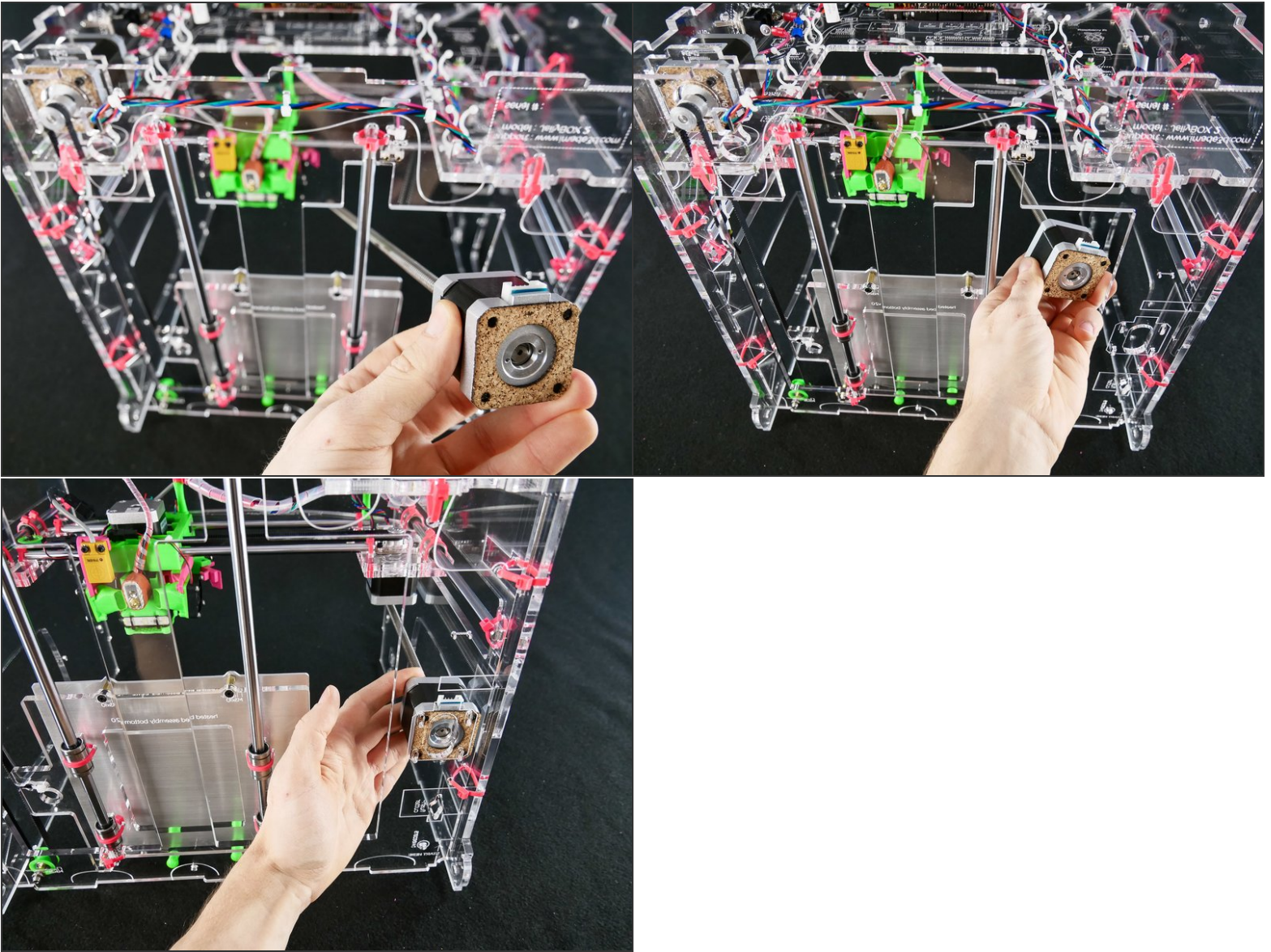
Step 3



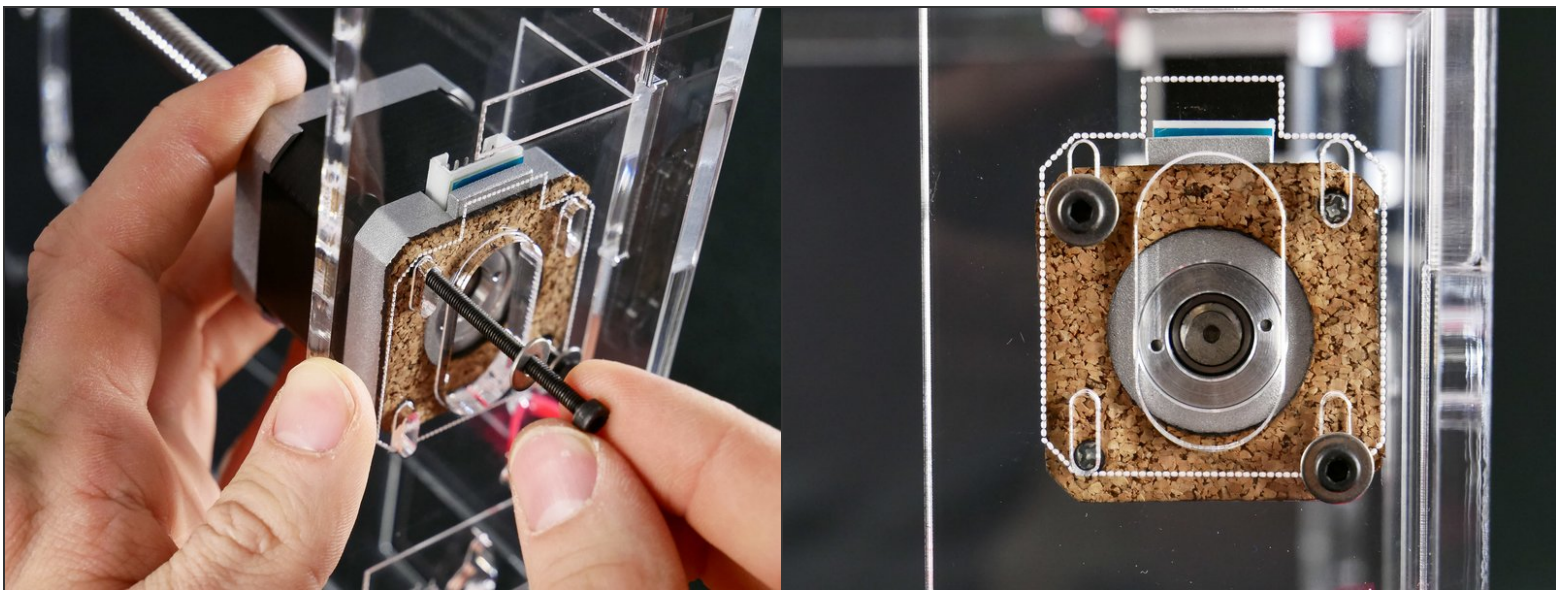
Step 4



Step 5

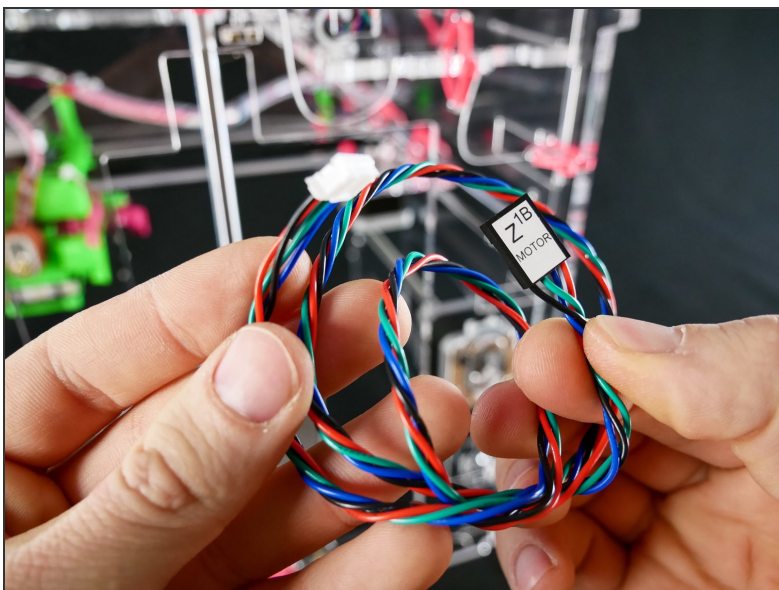


Step 6

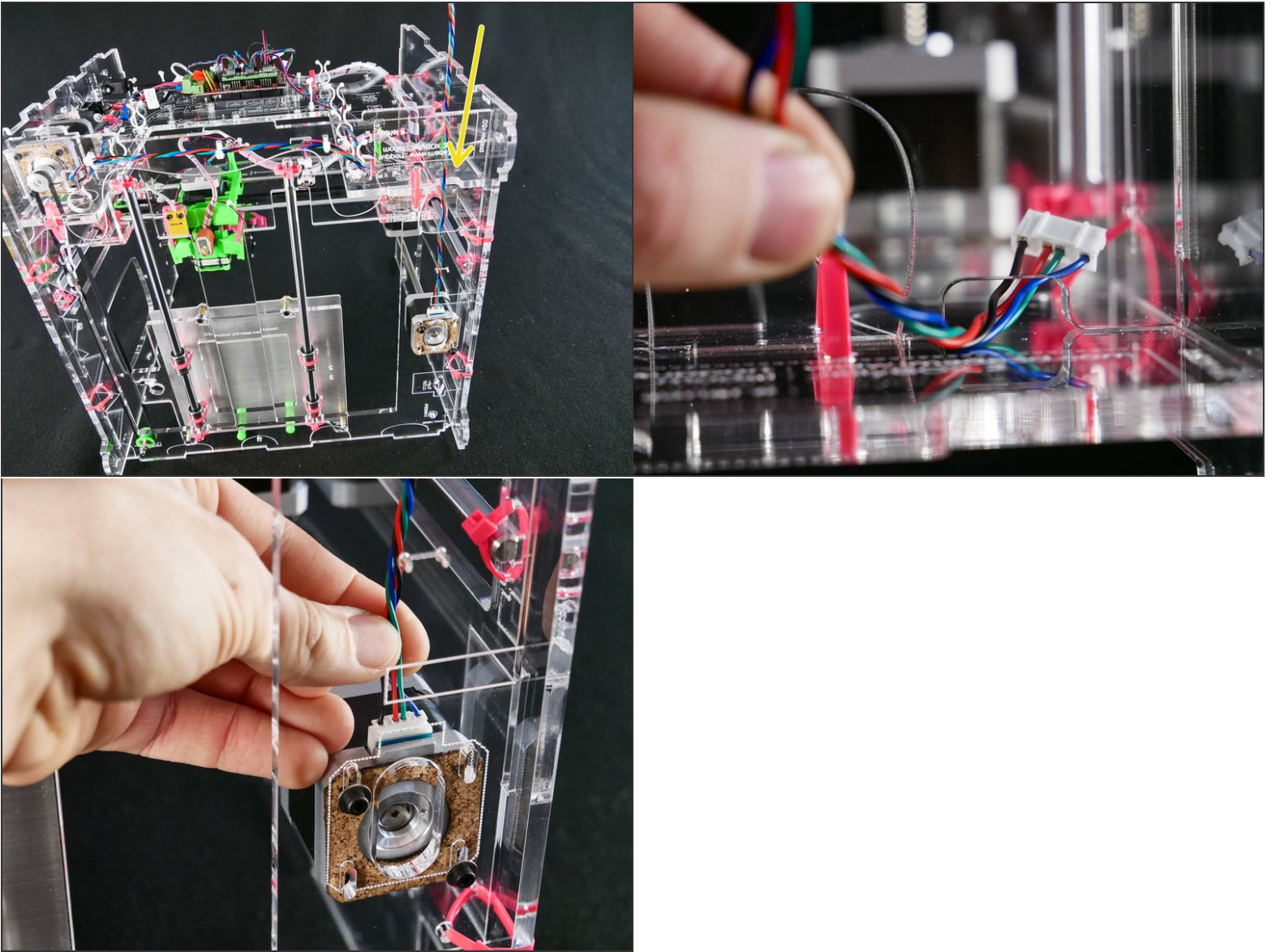


- Keep the screws a bit *loose*. We'll adjust the Z motor position later.

Step 7

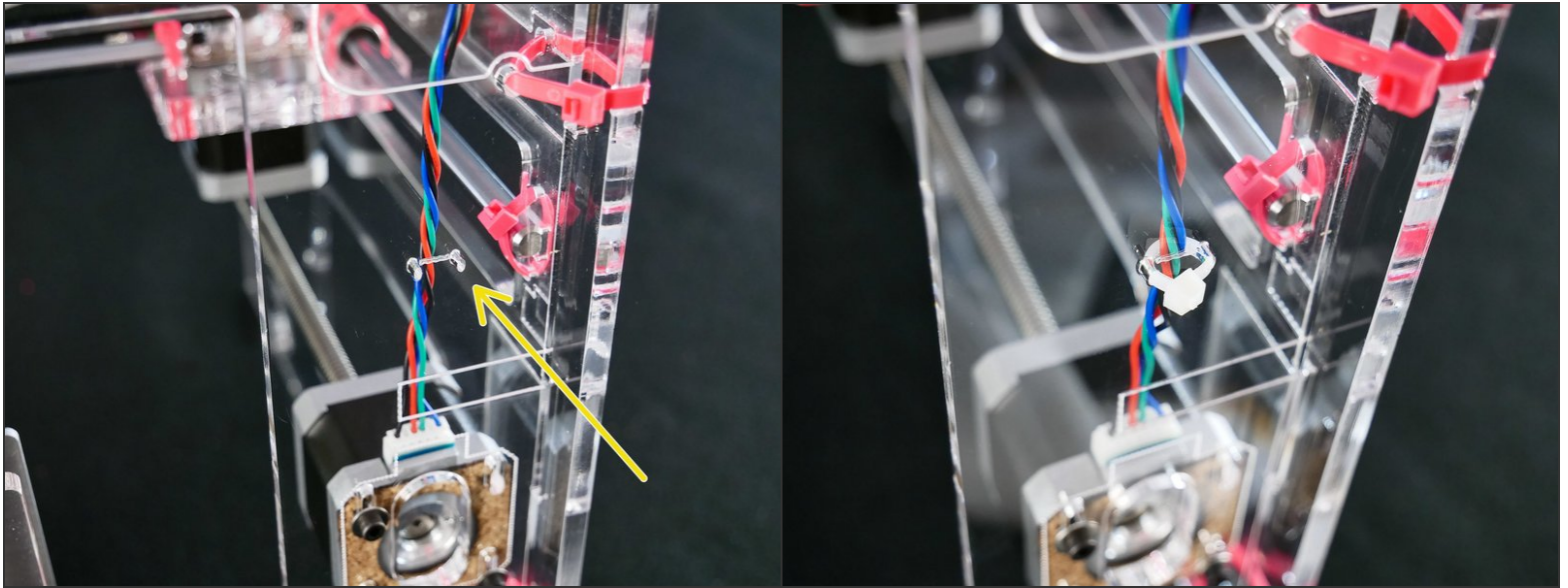


Step 8

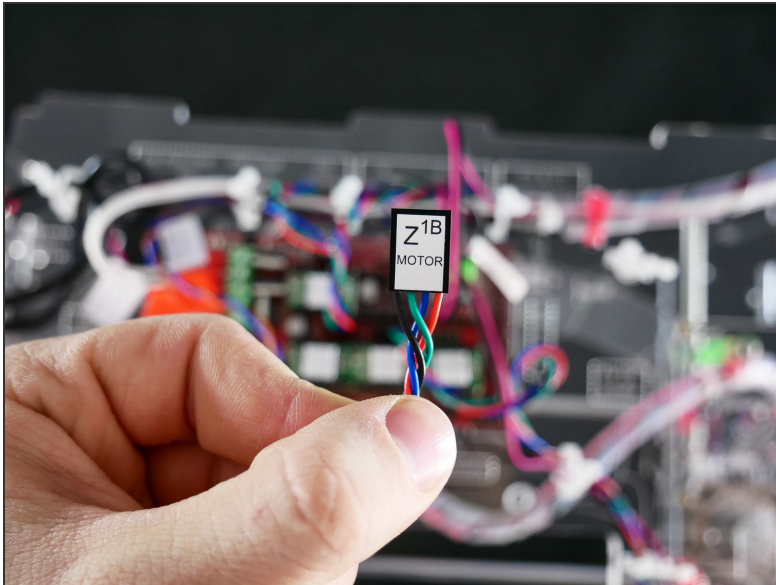


- [docs improvement] chose a better angle for photo #2

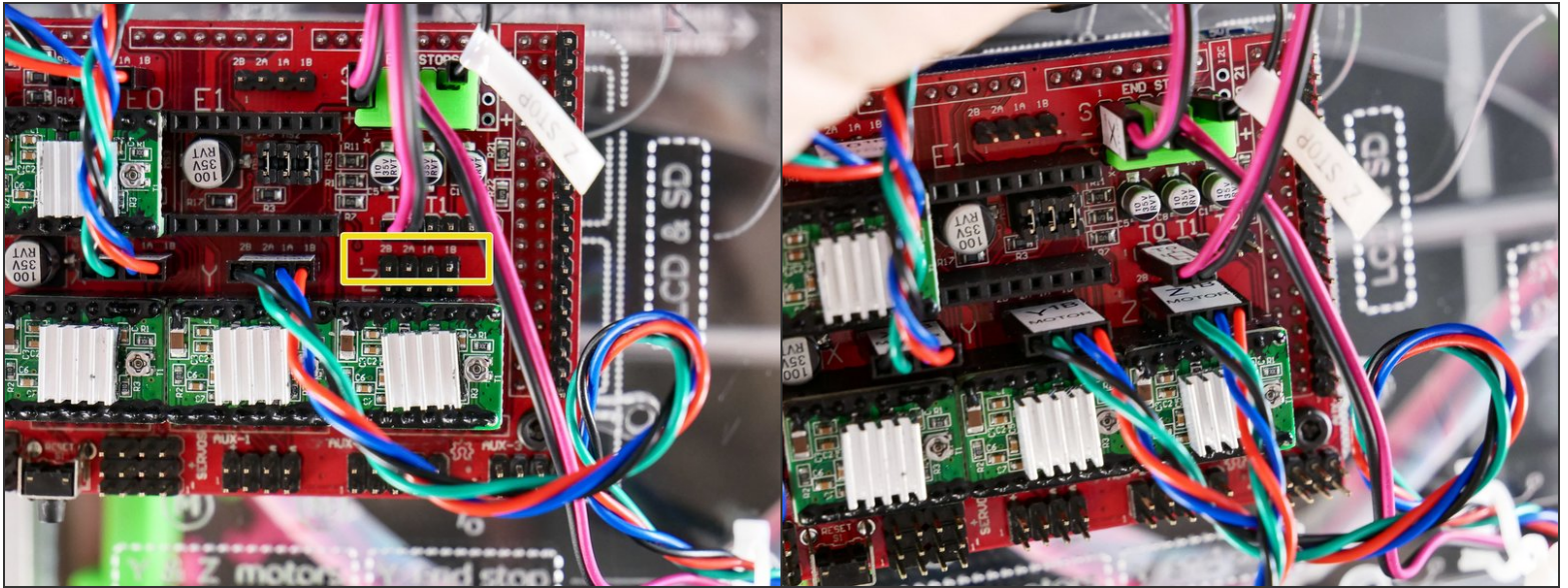
Step 9



Step 10



Step 11



Step 12 — It's done!

