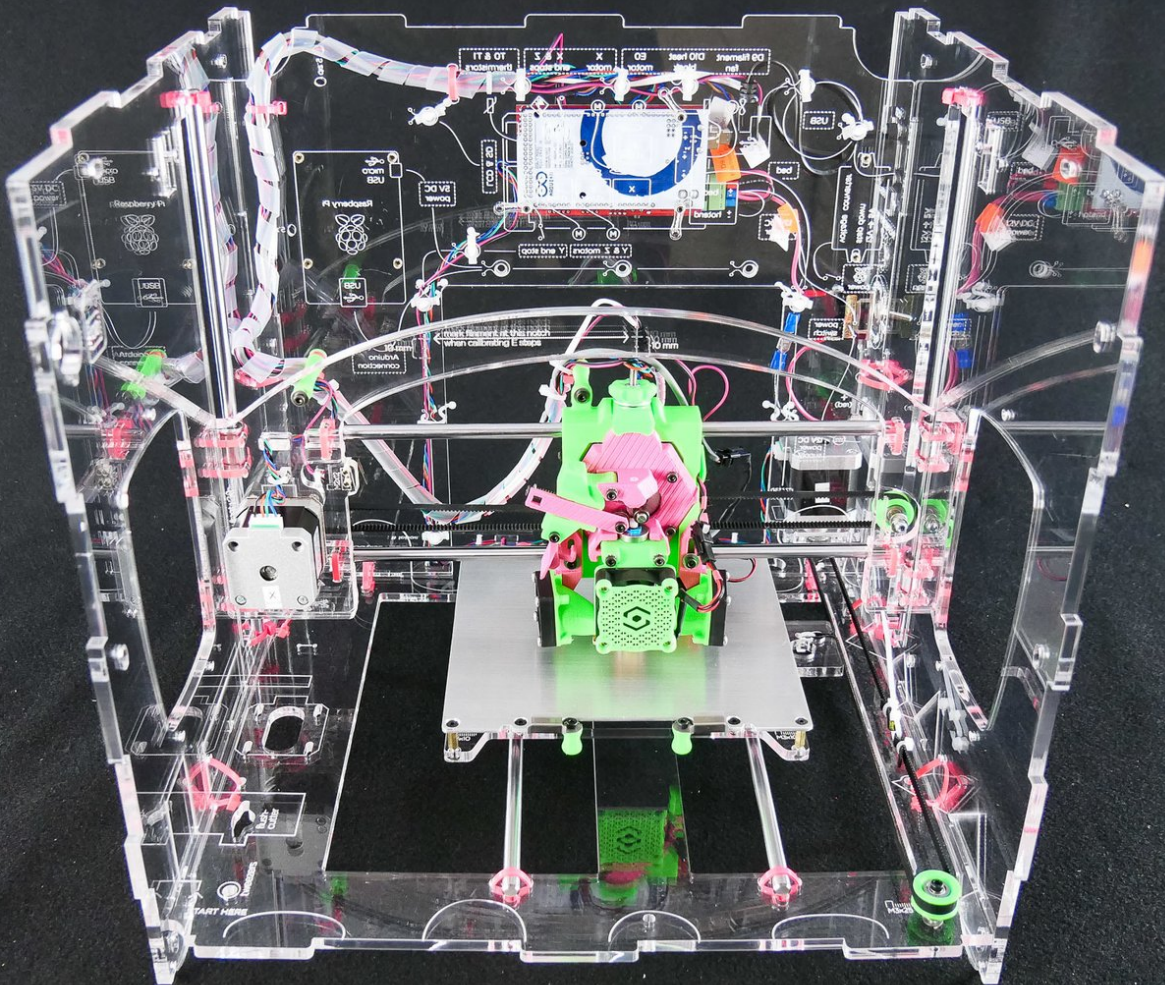


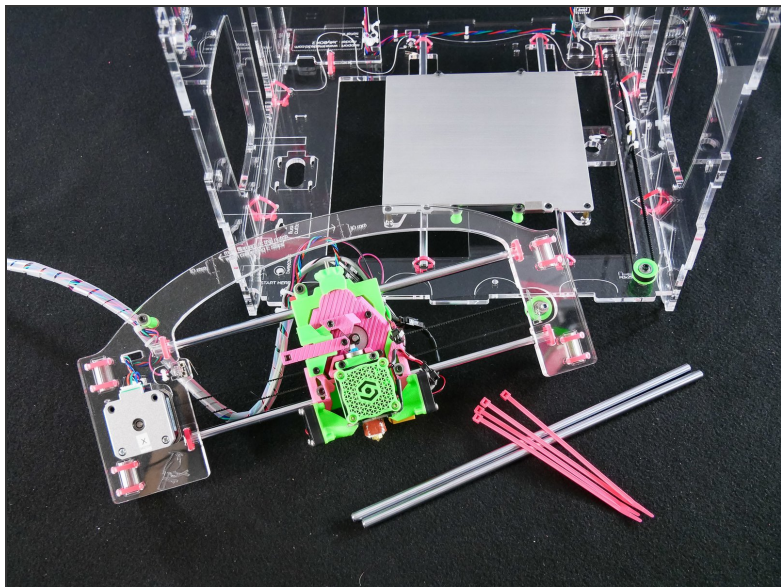


# Install the X Assembly

#jb2.1.b.b-easy-h

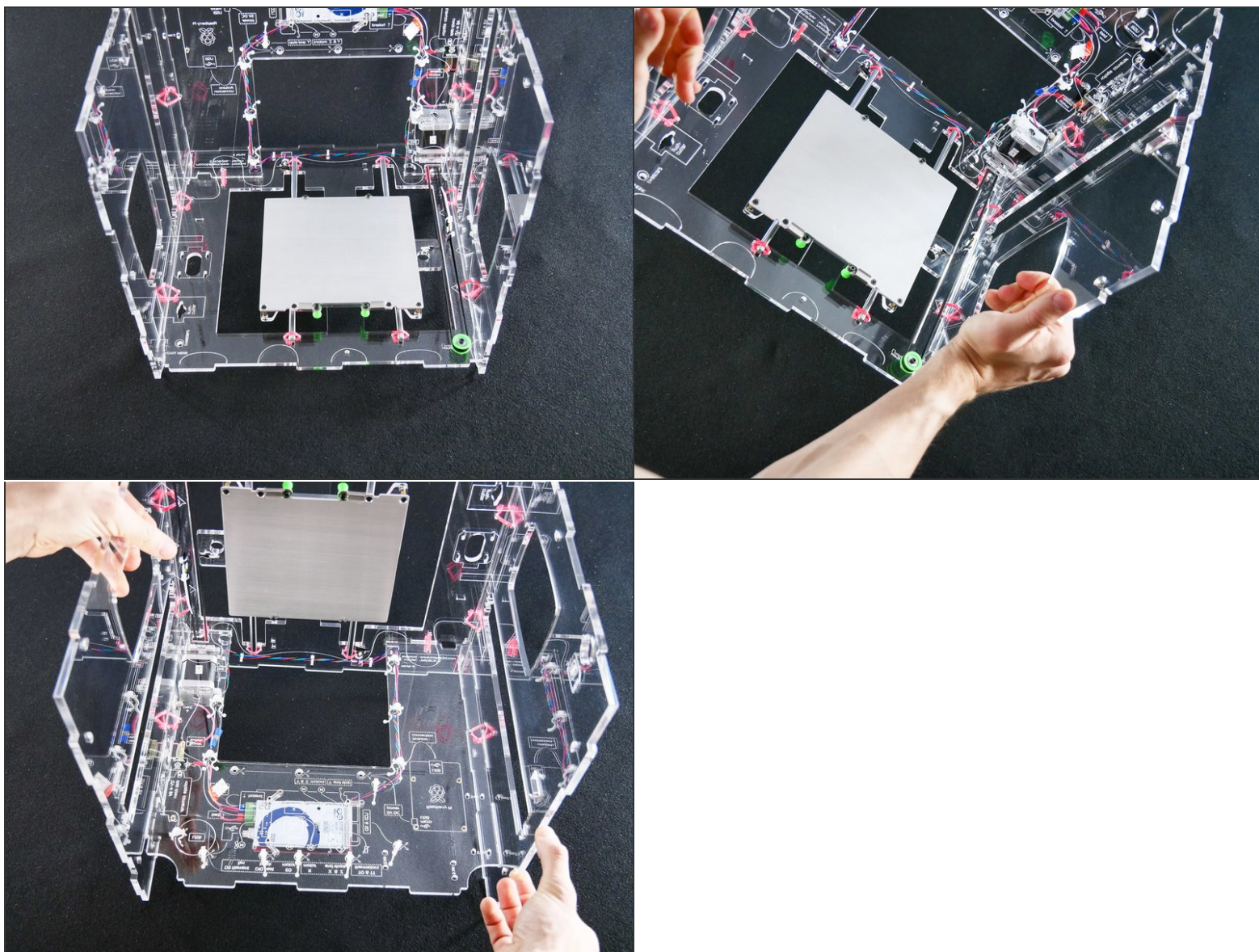


## Step 1 — ↳ Insert the X Assembly

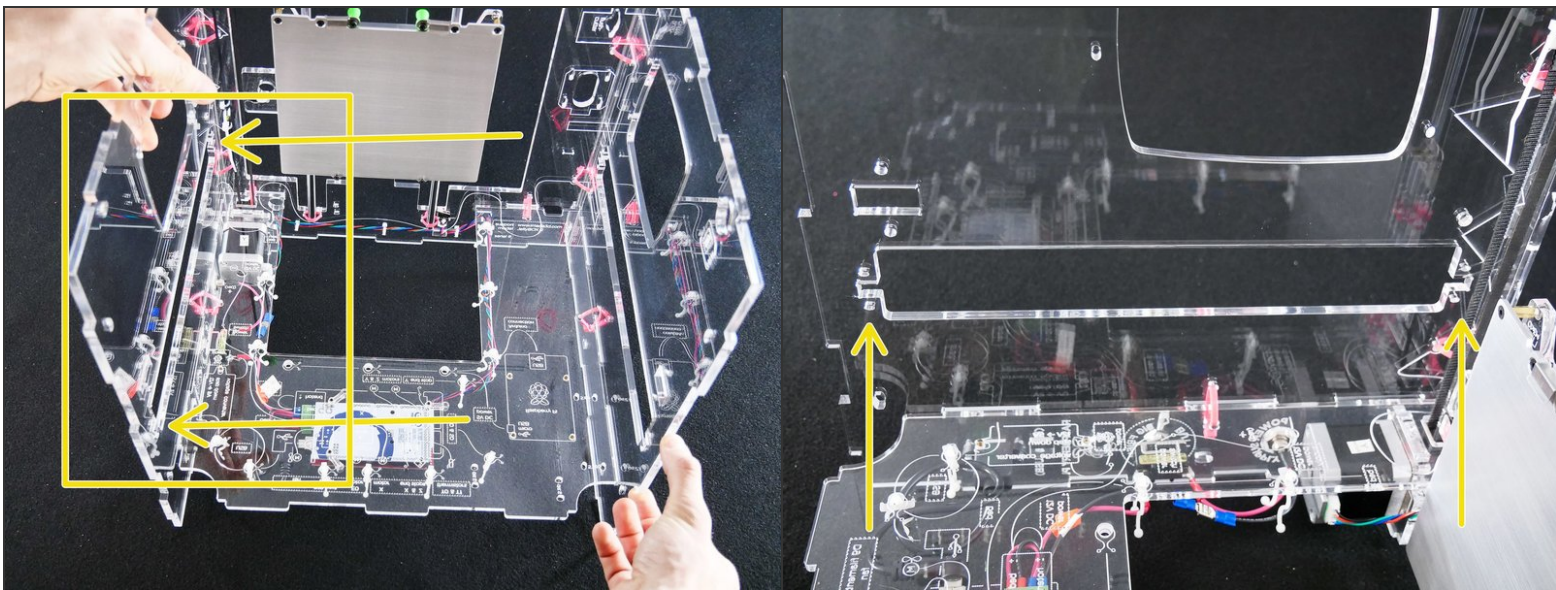




## Step 2

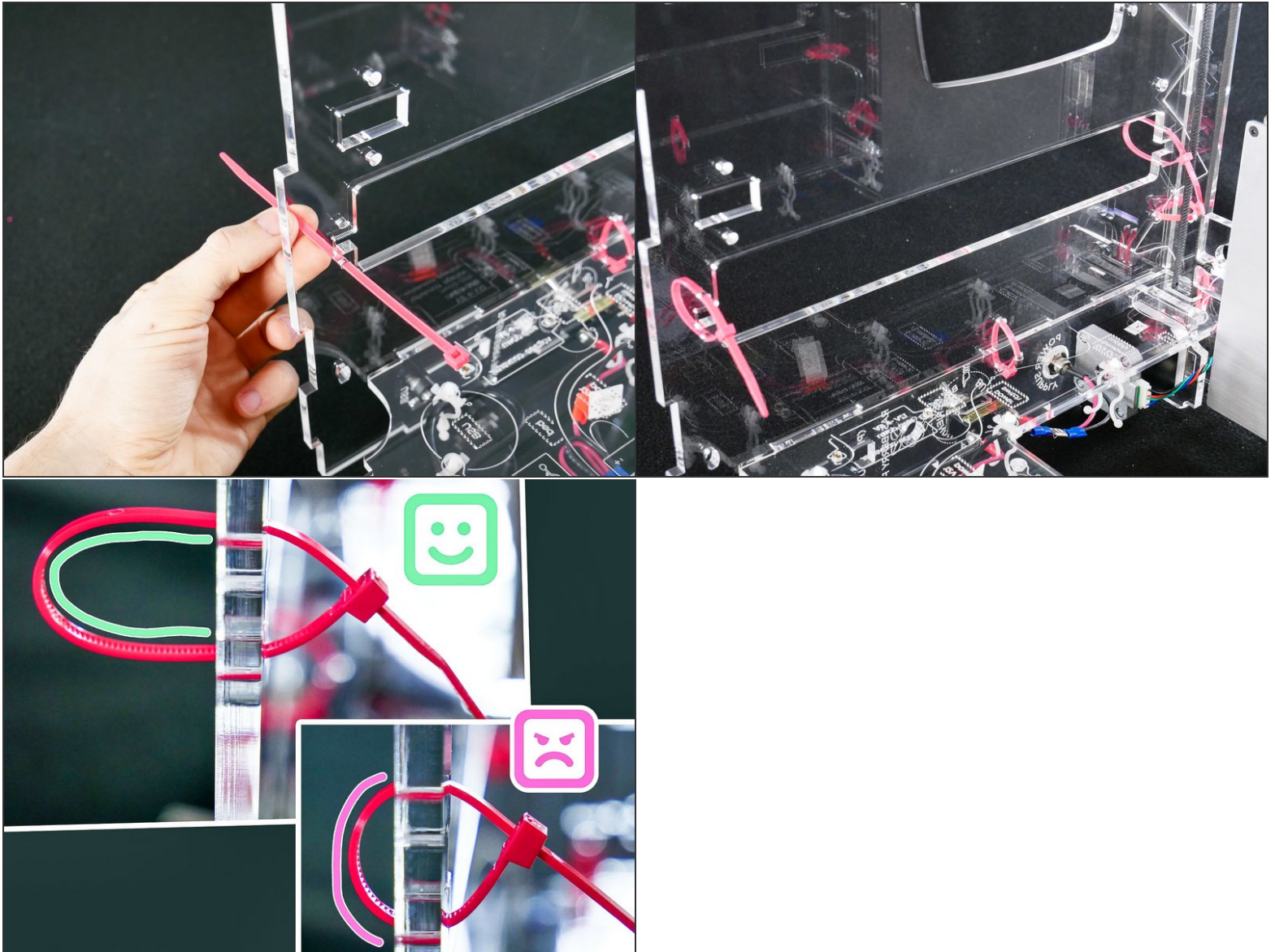


## Step 3



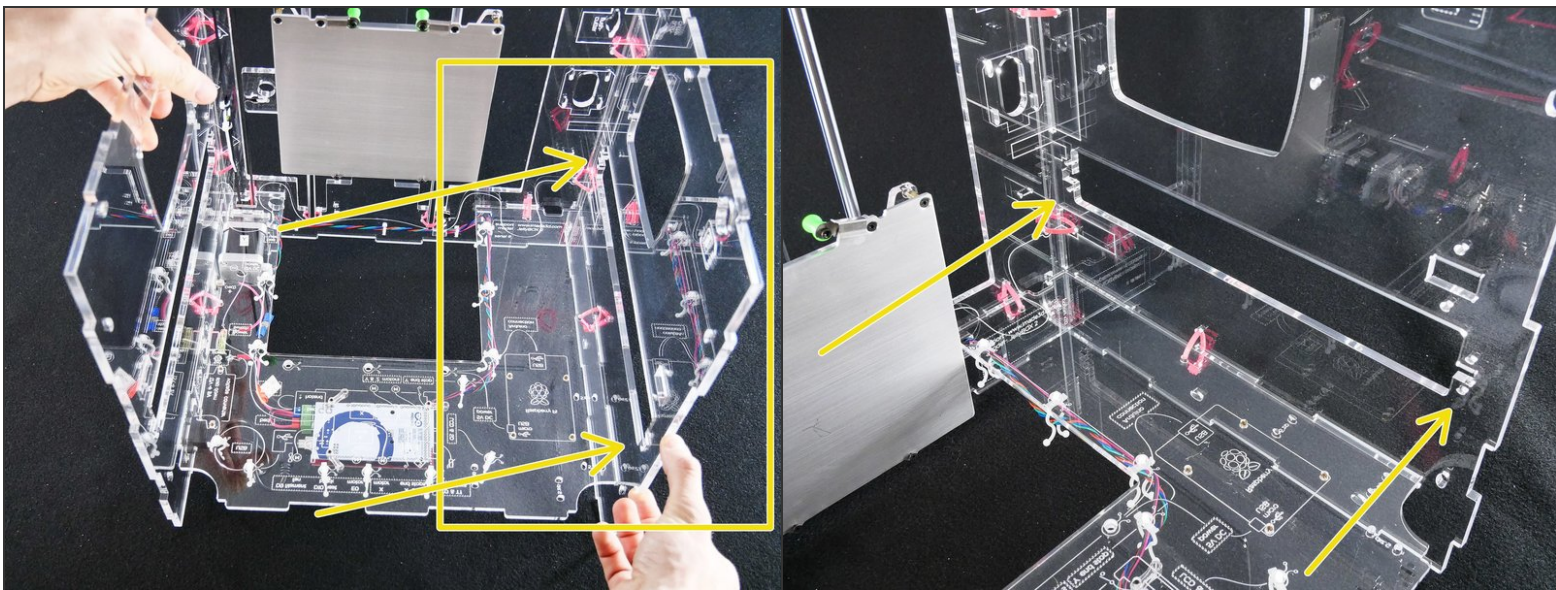


## Step 4

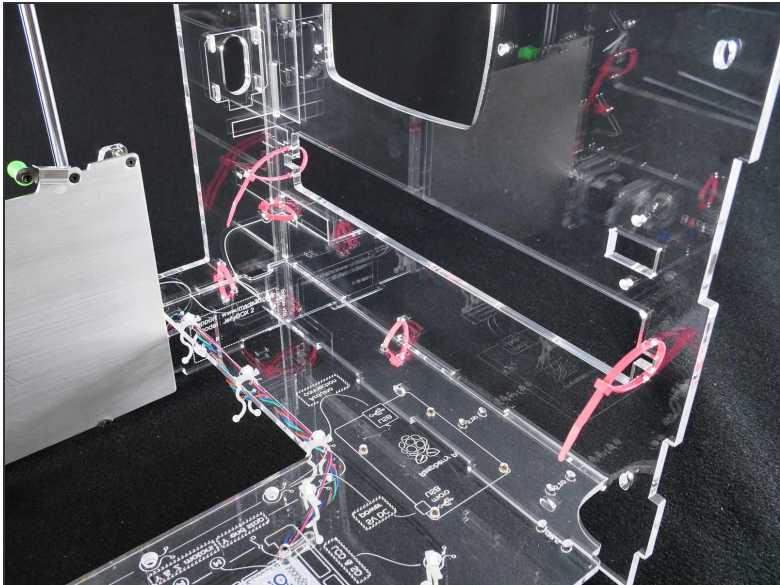


⚠️ Leave the zip ties loose.

## Step 5

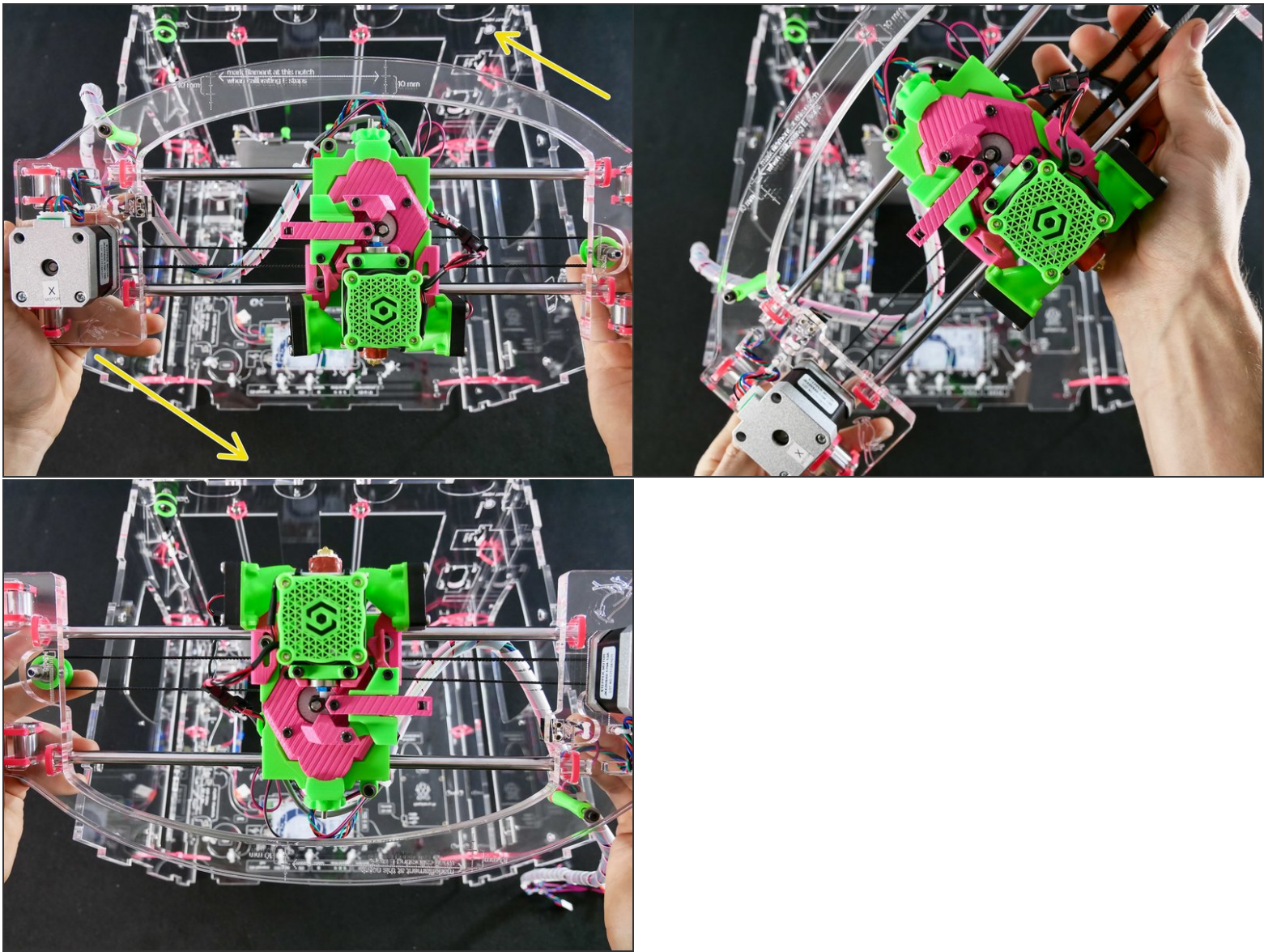


## Step 6



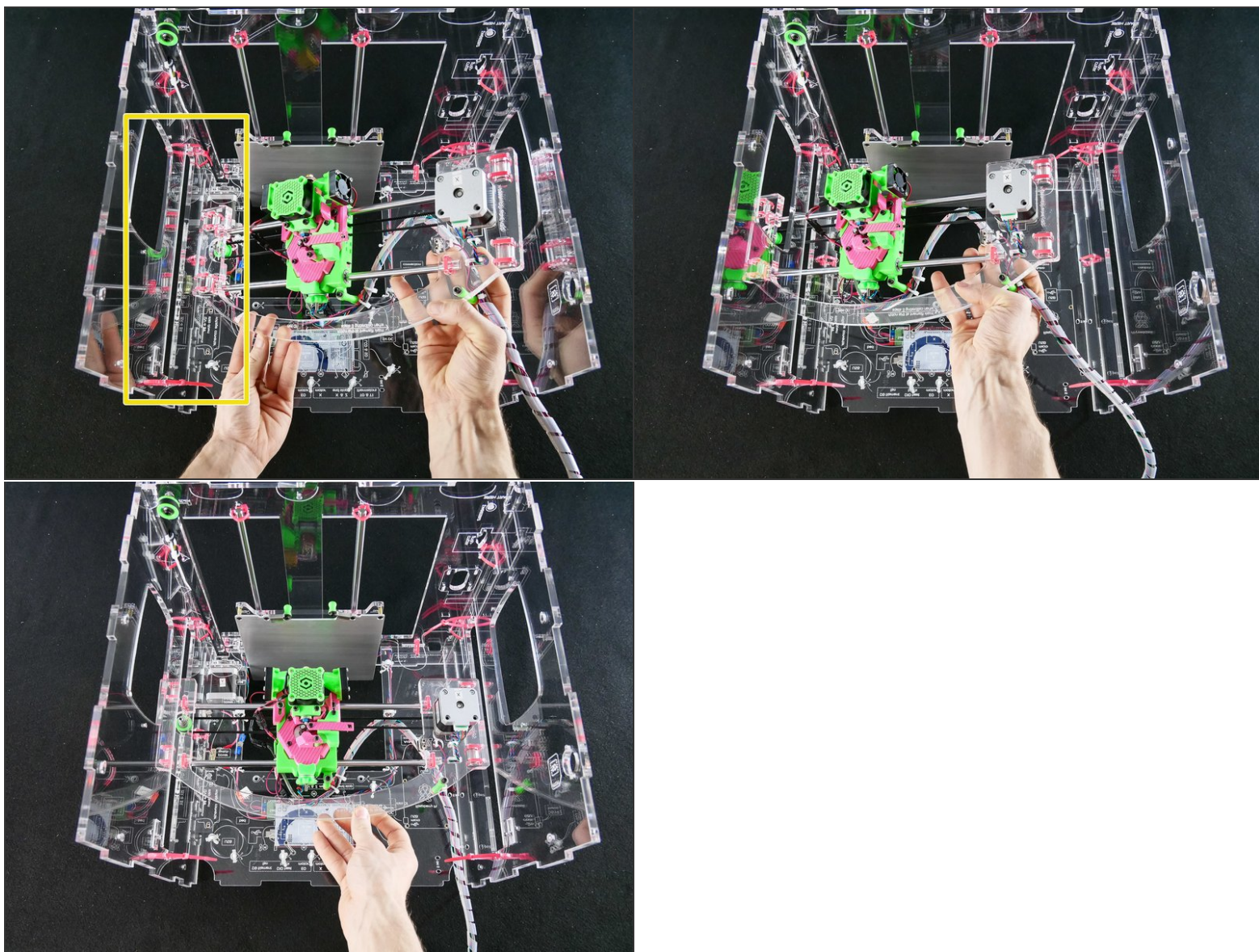


Step 7



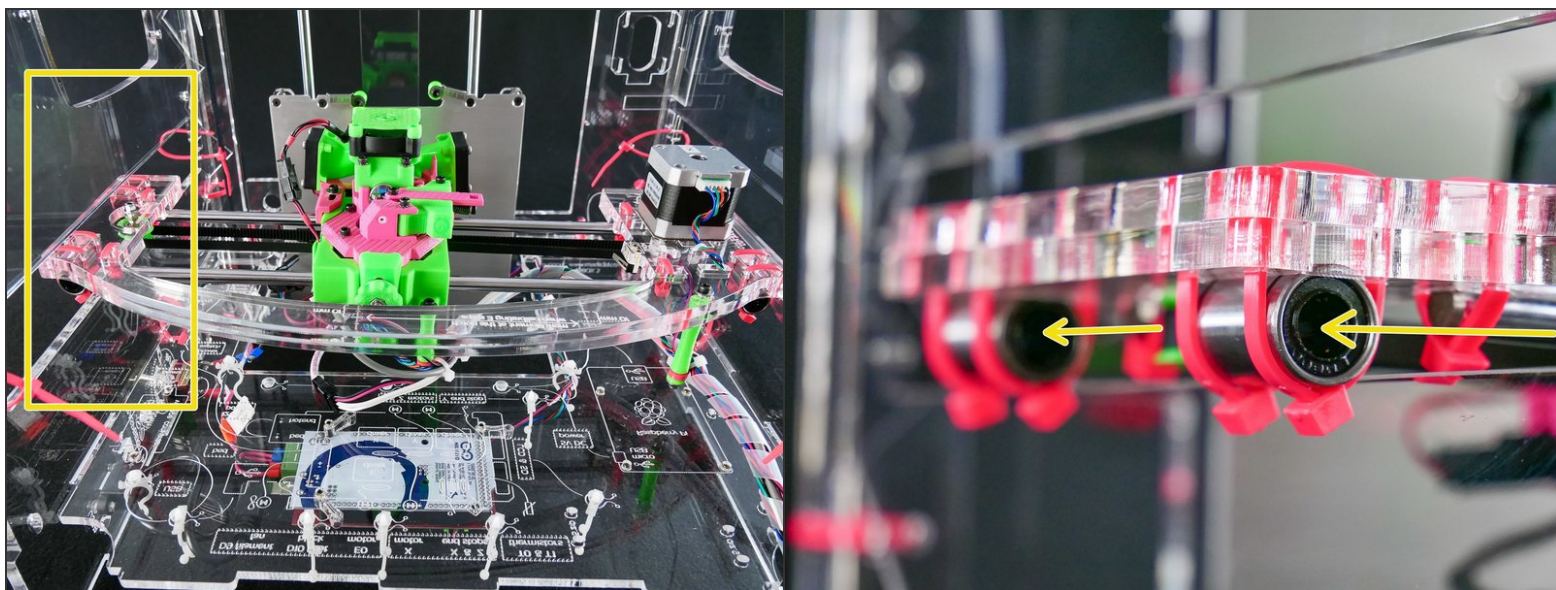


## Step 8

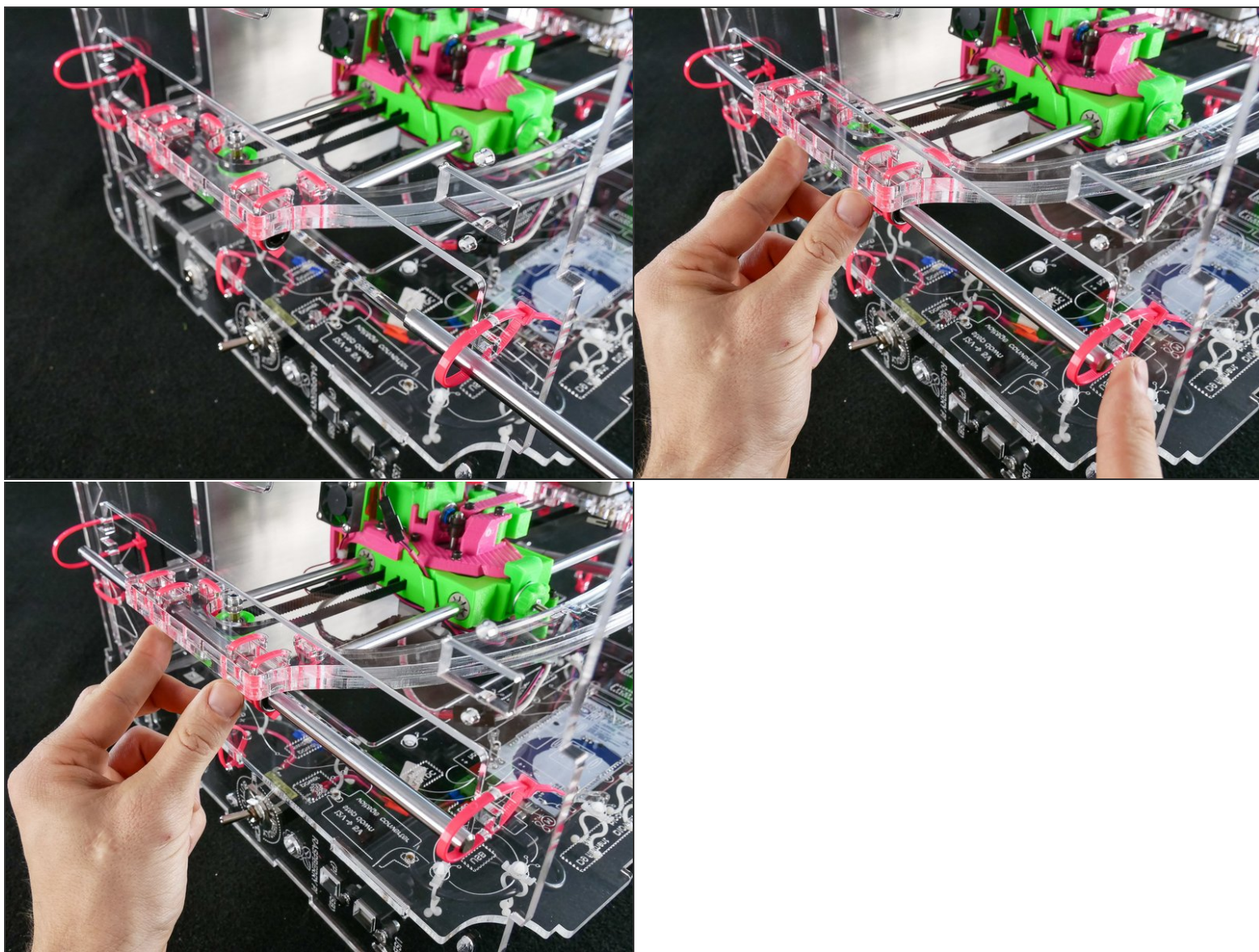




## Step 9



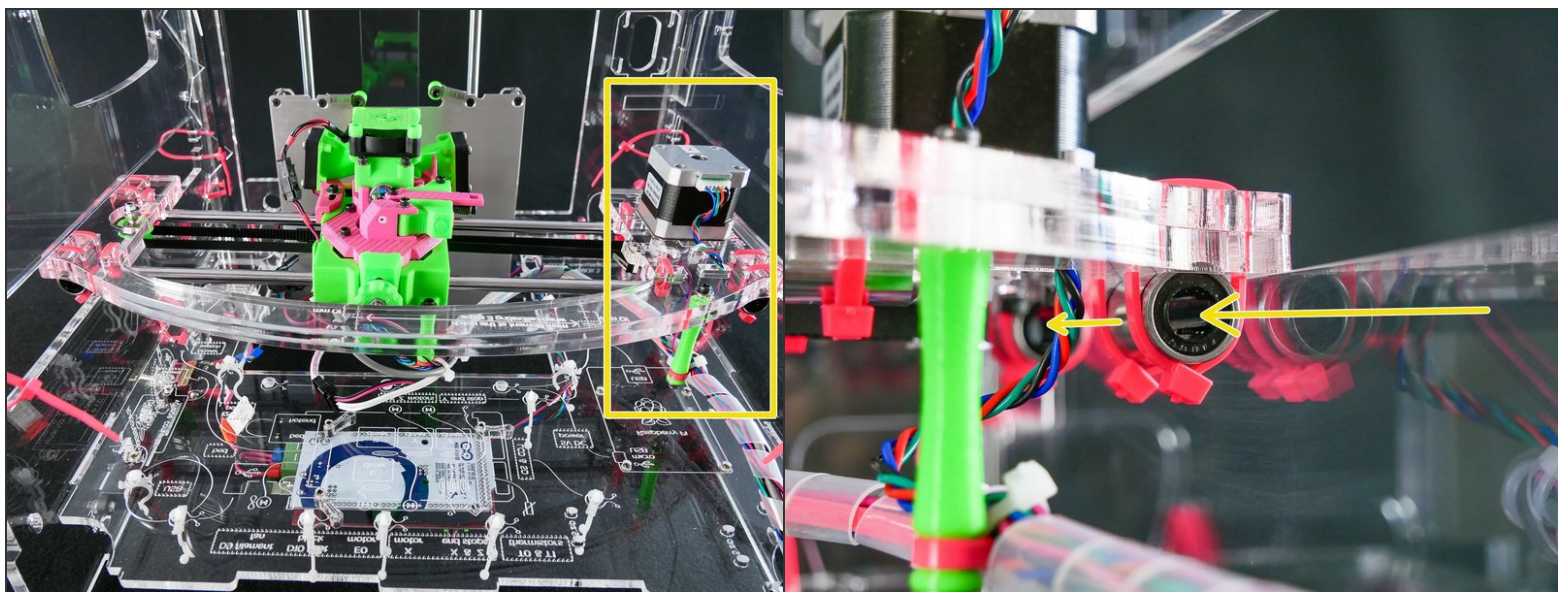
## Step 10



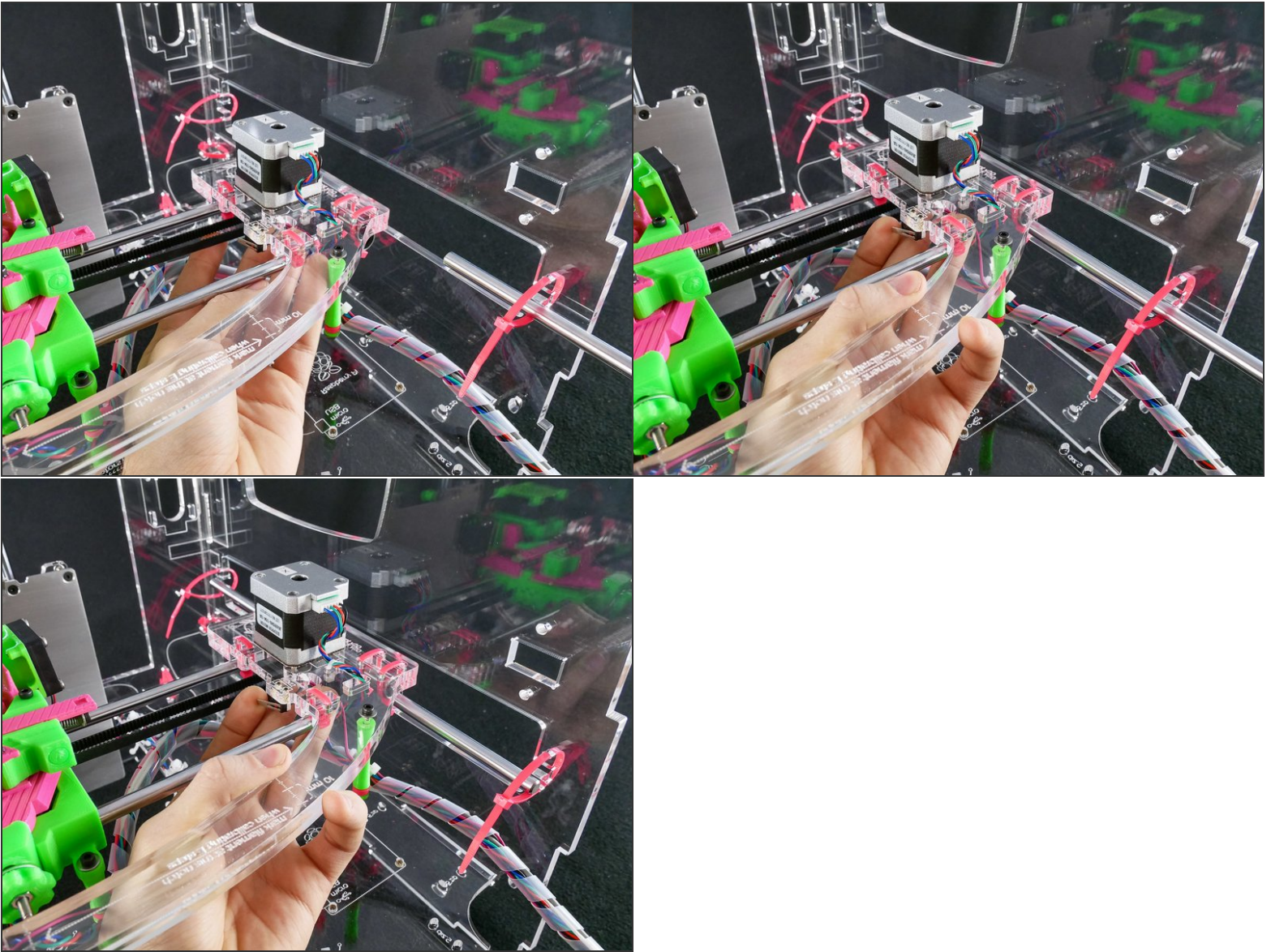
**⚠ Be gentle. Do not force the rod and keep it straight or you may damage the ball bearing by knocking some balls out.**



## Step 11



## Step 12



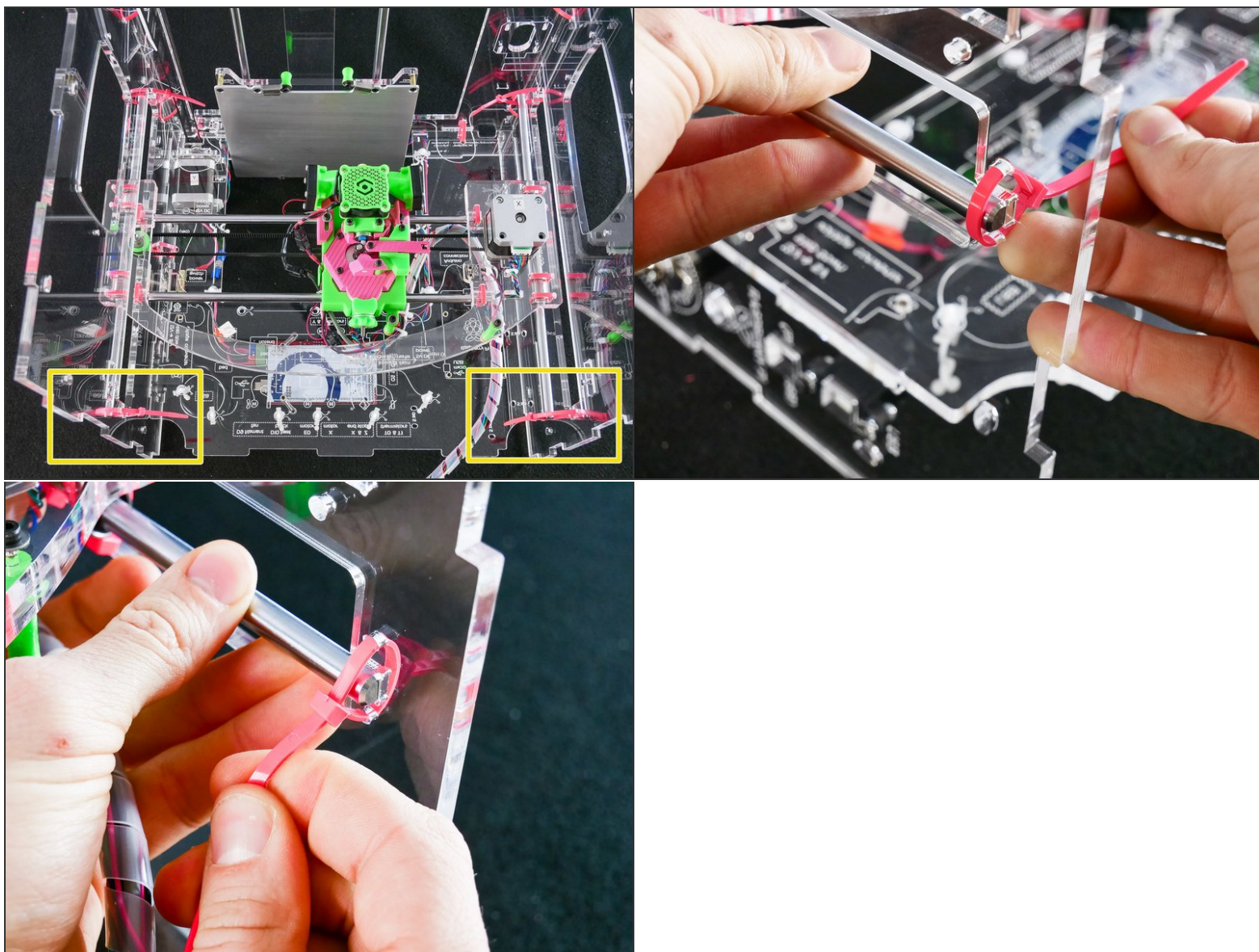
**⚠ BE GENTLE.** Do no force the rod and keep it straight or *you may damage the inside of the bearing.*

## Step 13

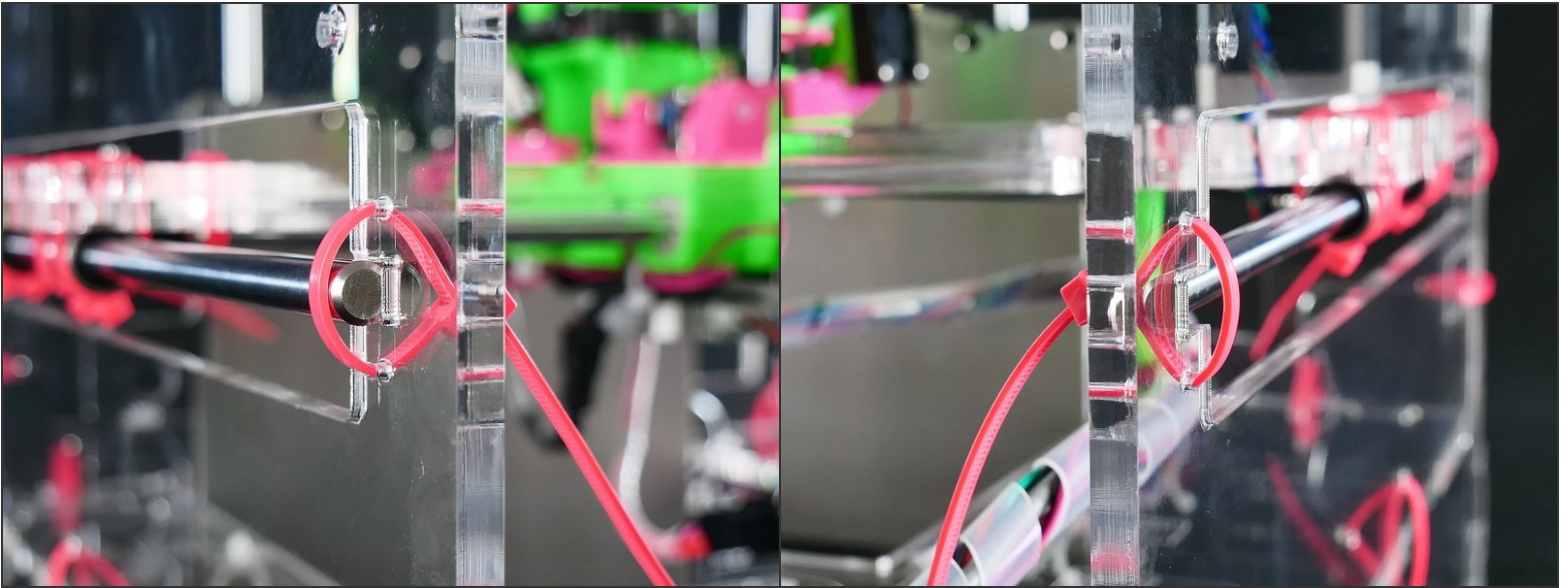
- We highly recommend you **scroll ahead** and **look at the whole procedure** of zip tying the x assembly.
- The procedure is quite simple, but it's hard to understand if you look image-by-image.
- ❗ We'll first tighten both front zip ties, and only then both zip ties in the back.



## Step 14



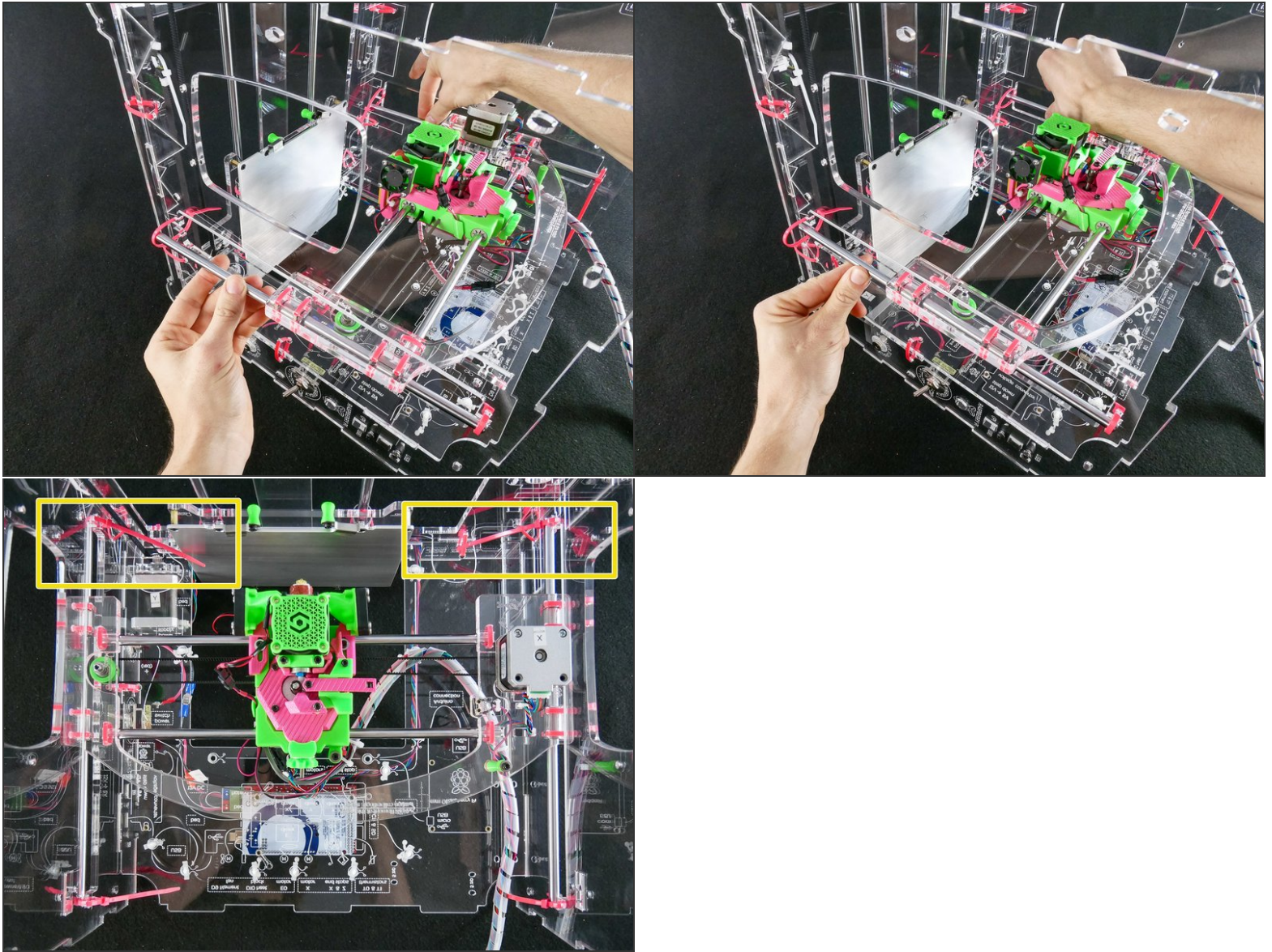
## Step 15



☒ Note that on the **left** the rod is **outside**, while on the **right** the rod is **inside**.



## Step 16



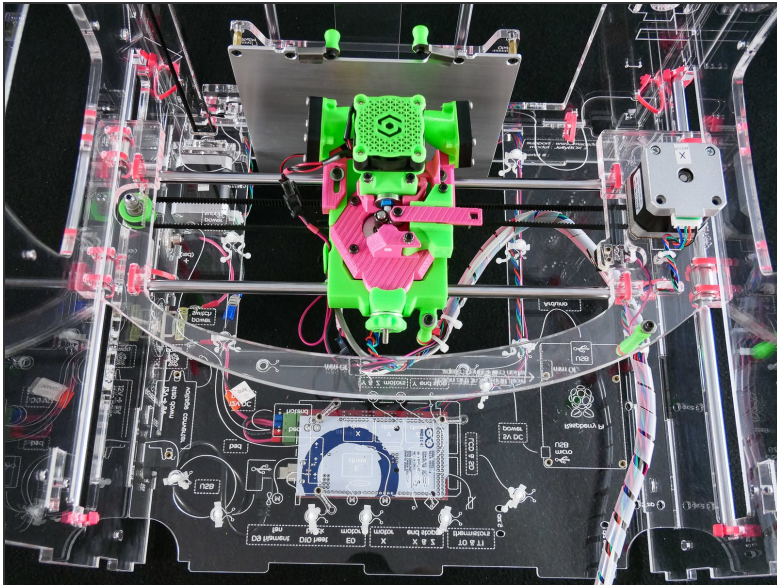
- Push the rods in place and tighten the back zip ties.



## Step 17



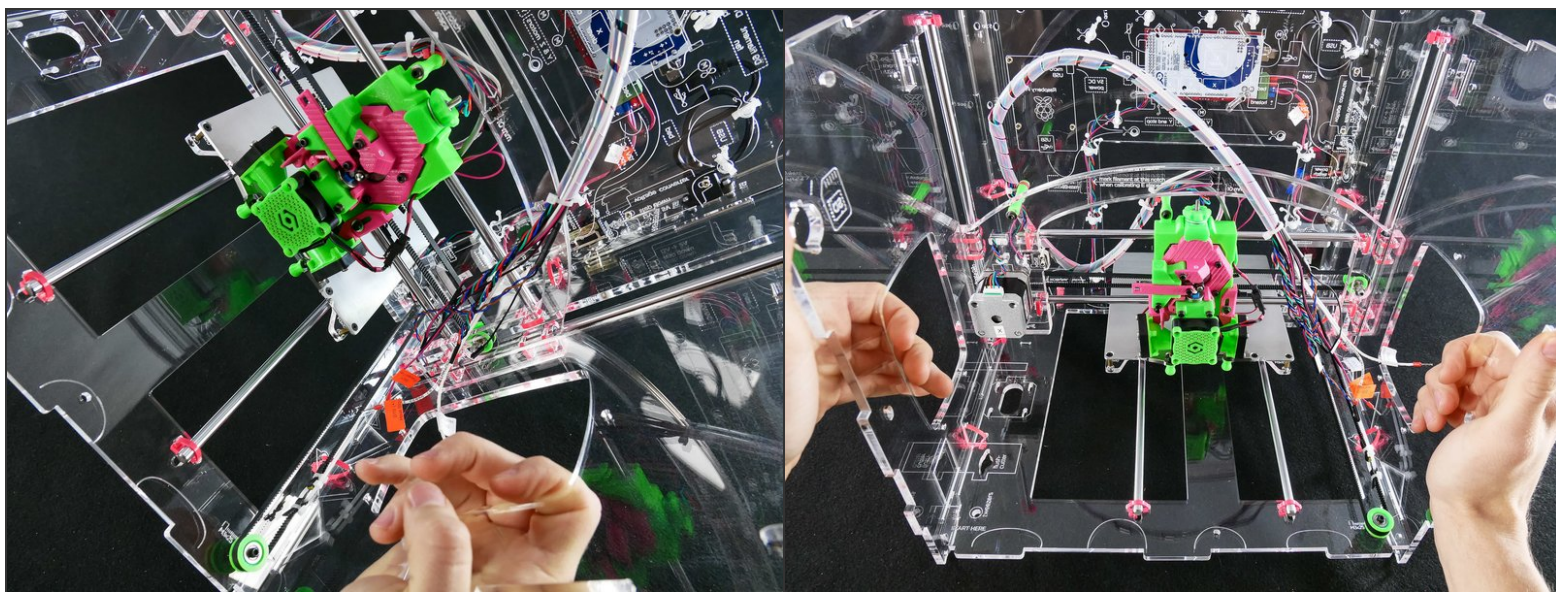
## Step 18 — Looking good!



- The X assembly is inserted.

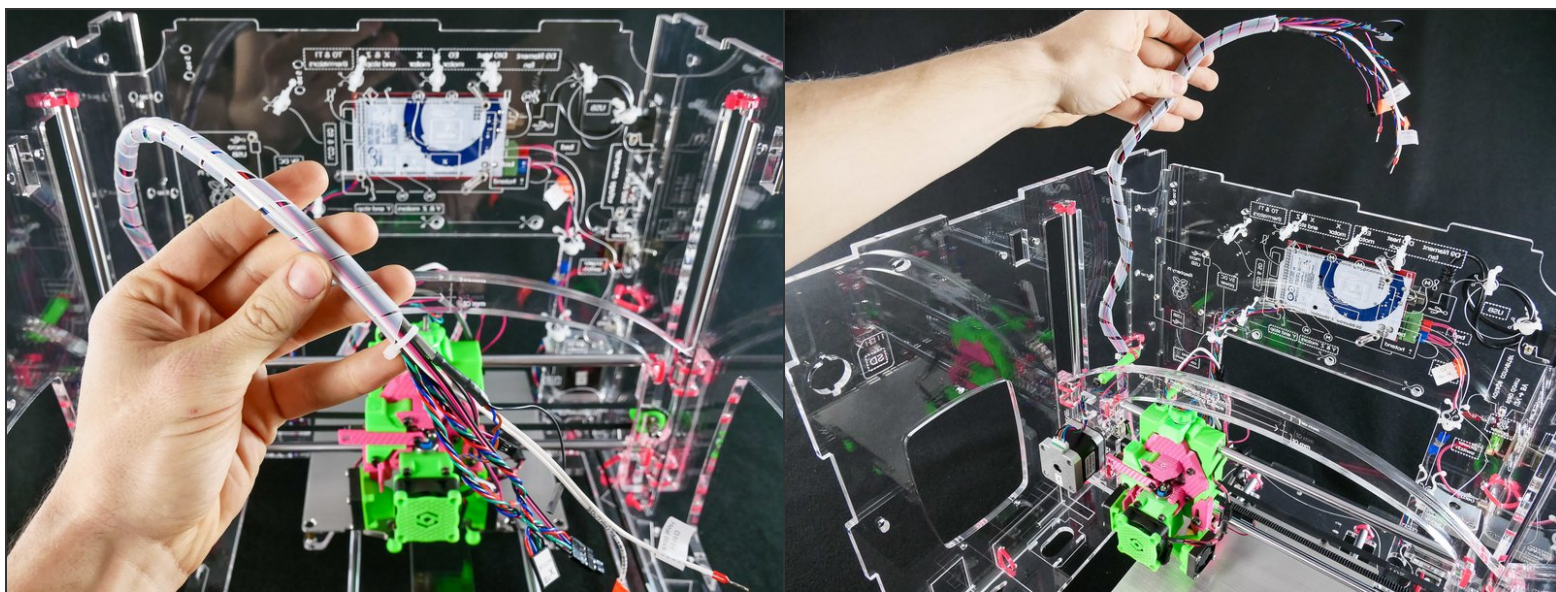


## Step 19

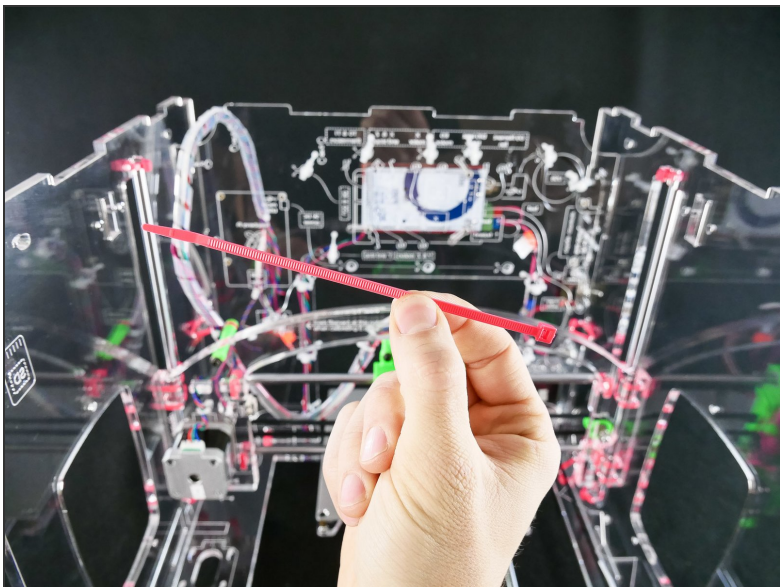


- Turn the JellyBOX from its back into *normal position*.

## Step 20

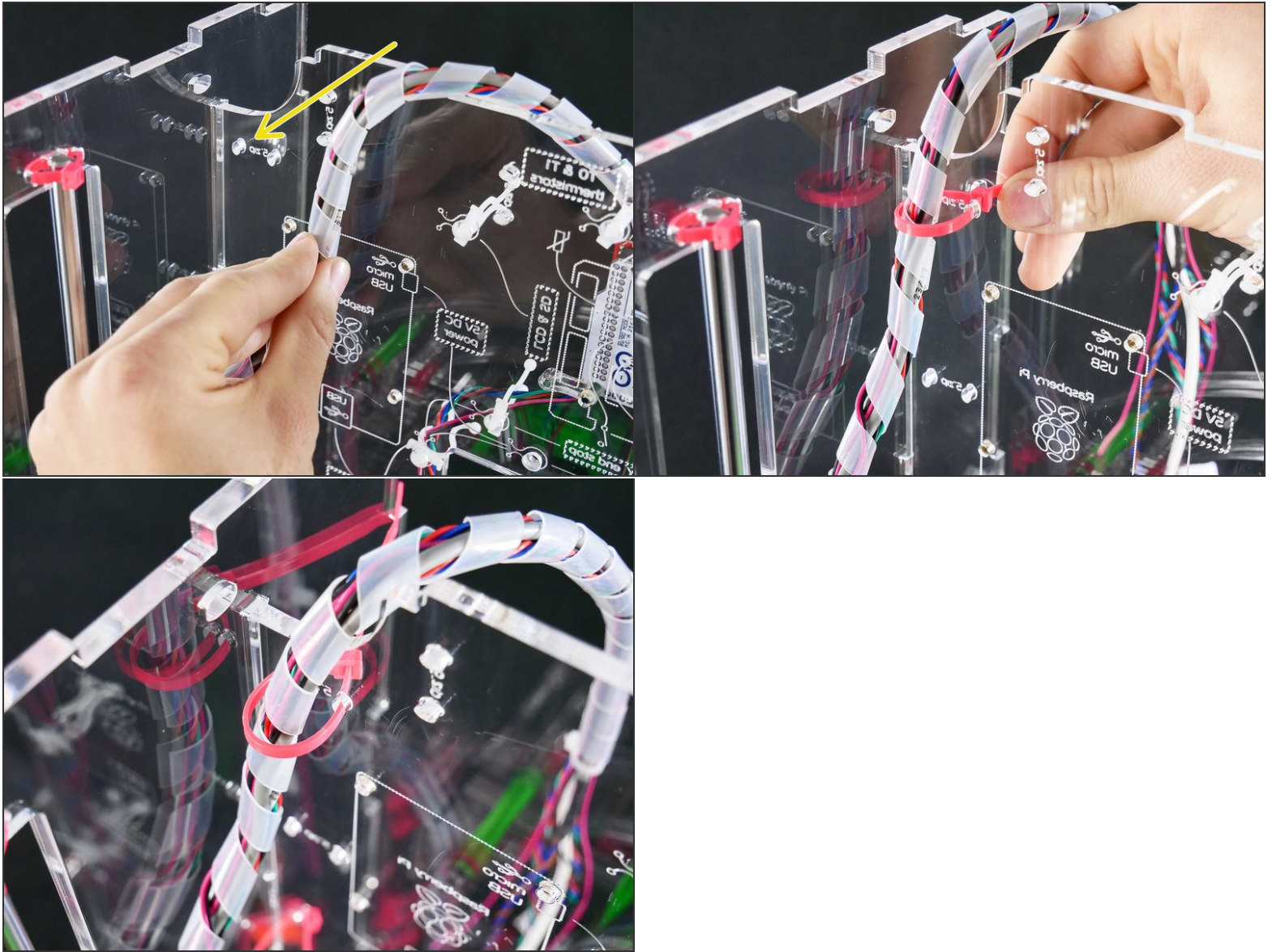


## Step 21





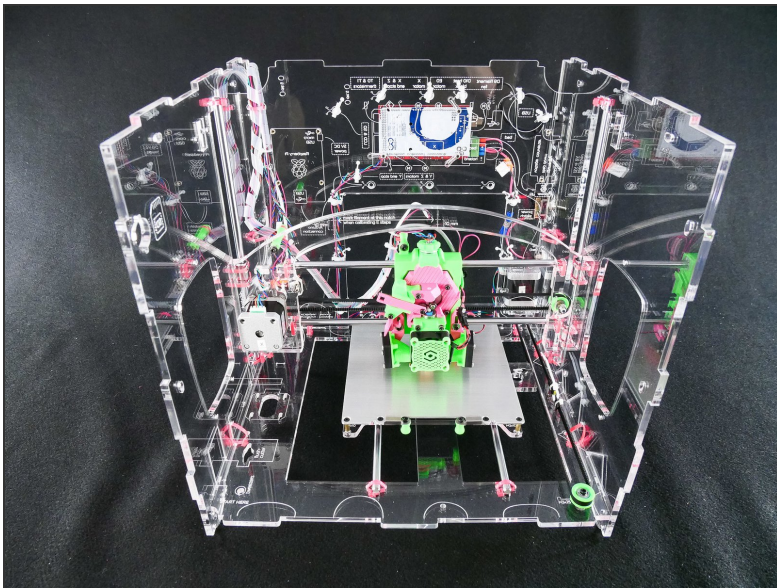
## Step 22



⚠ Leave the zip tie **loose**.

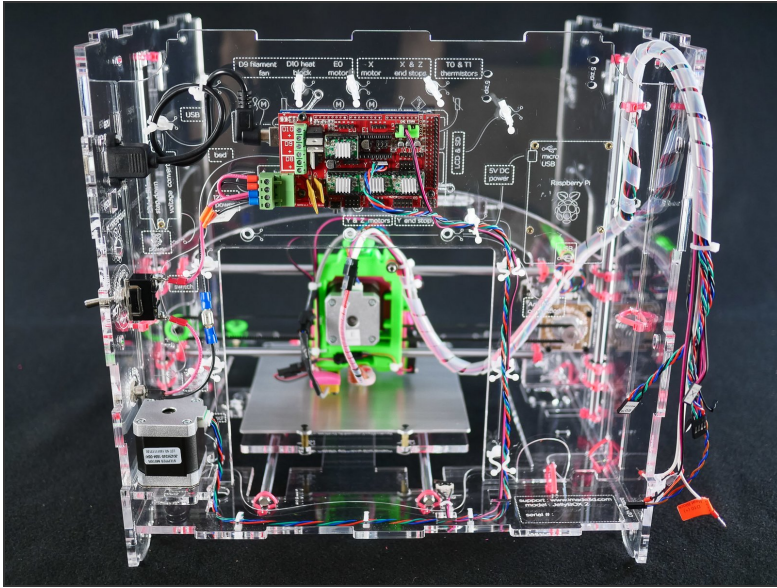
**Step 23 — ► Video: Adjust the X Wire Harness Folding (50s)**

- ► Video: Adjust the X Wire Harness Folding (50s)
- Adjust the mounting point as needed so that the harness is folding nicely and predictably.

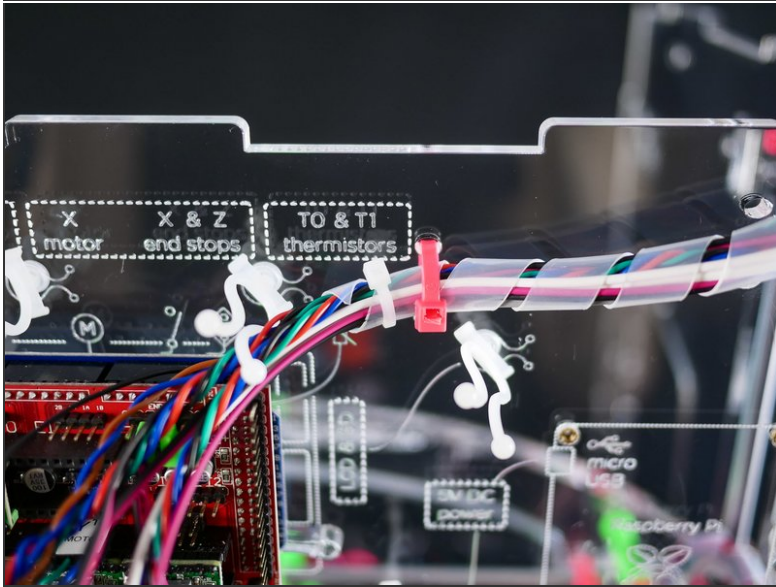
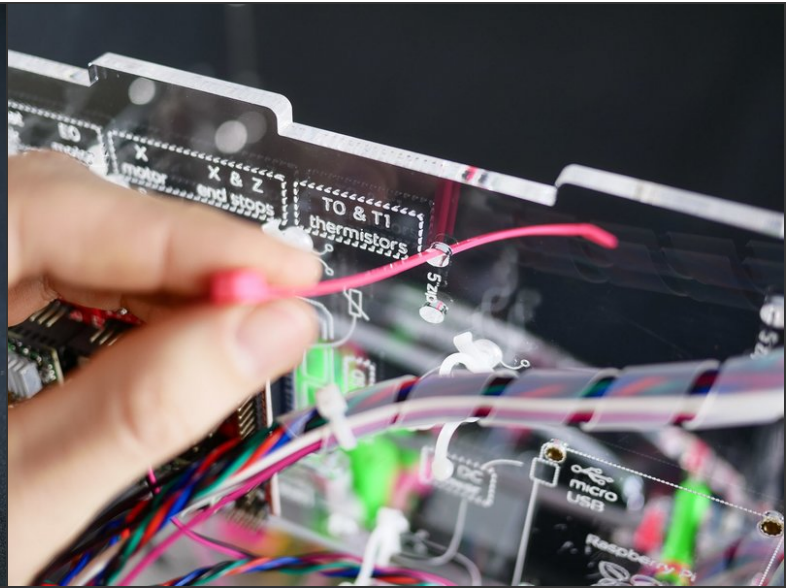
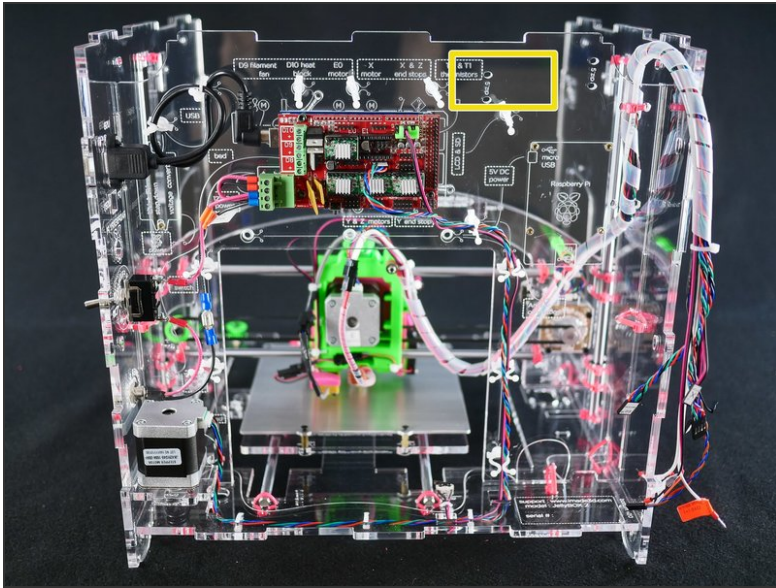
**Step 24 — Looking Good!**



## Step 25 — ↳ Wire up the X Assembly

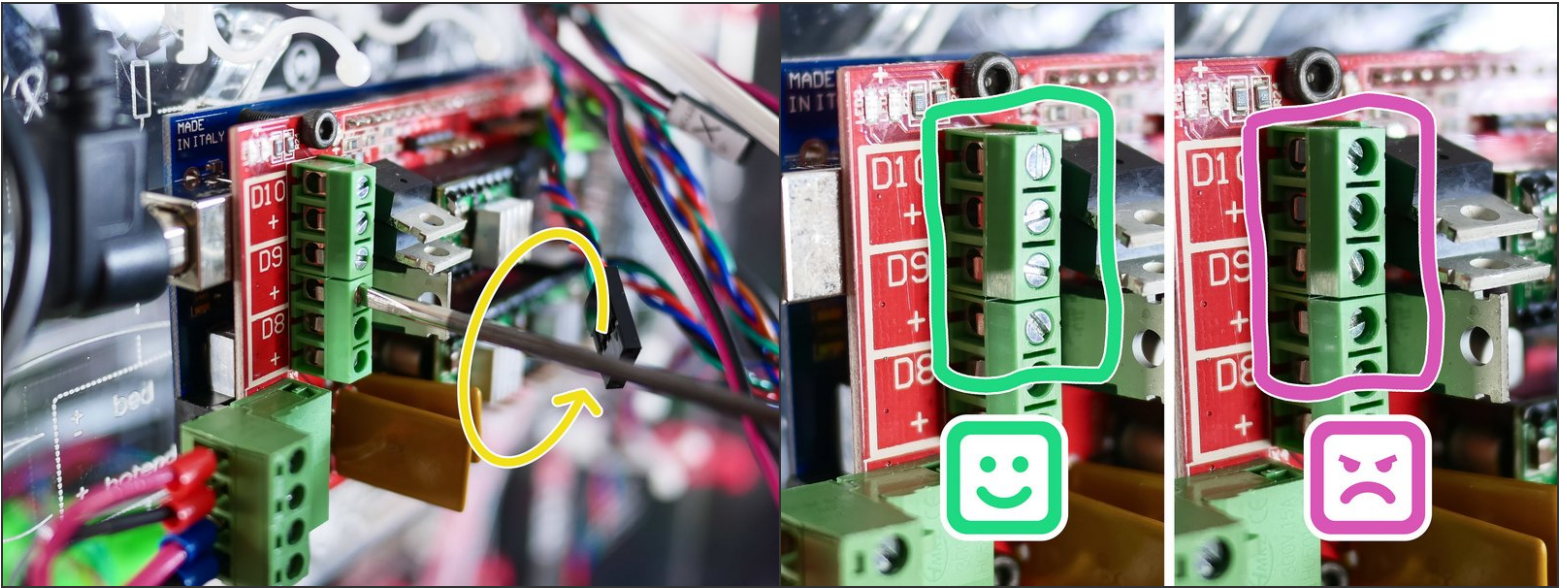


## Step 26

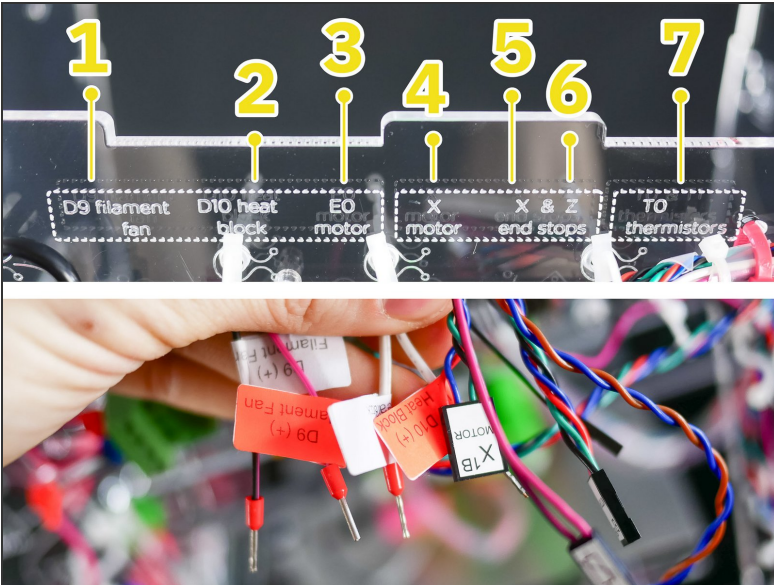




## Step 27

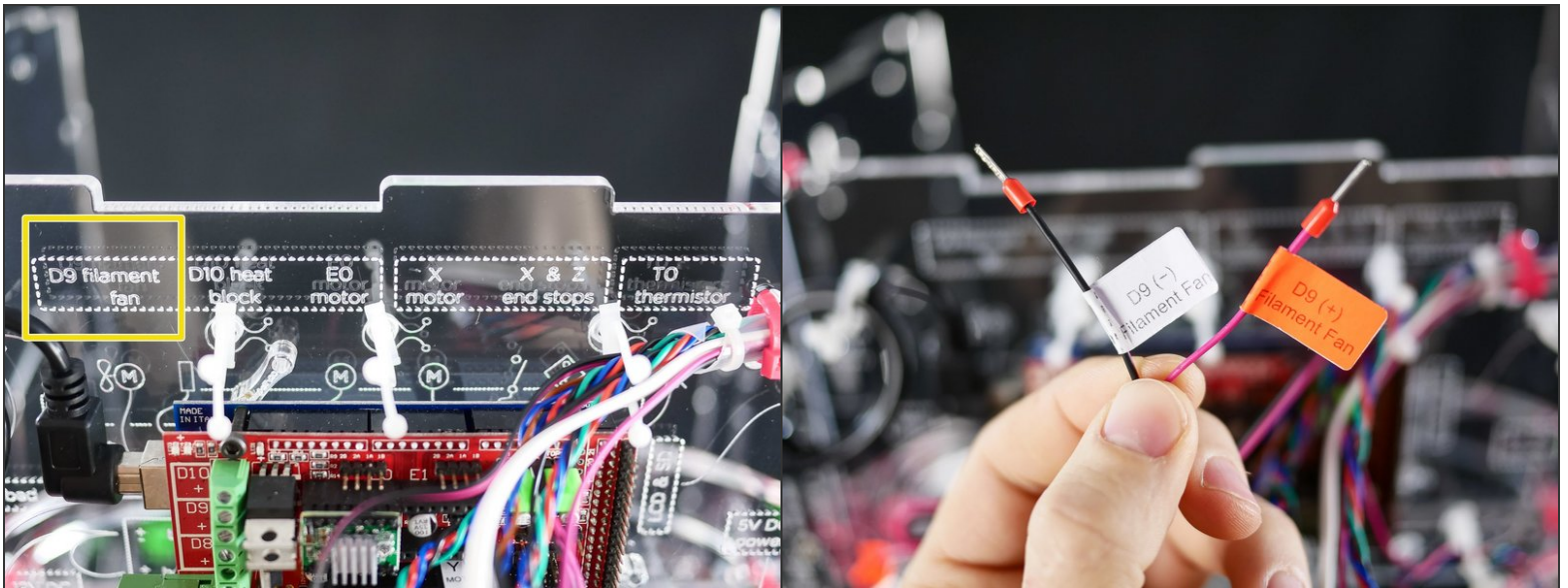


## Step 28



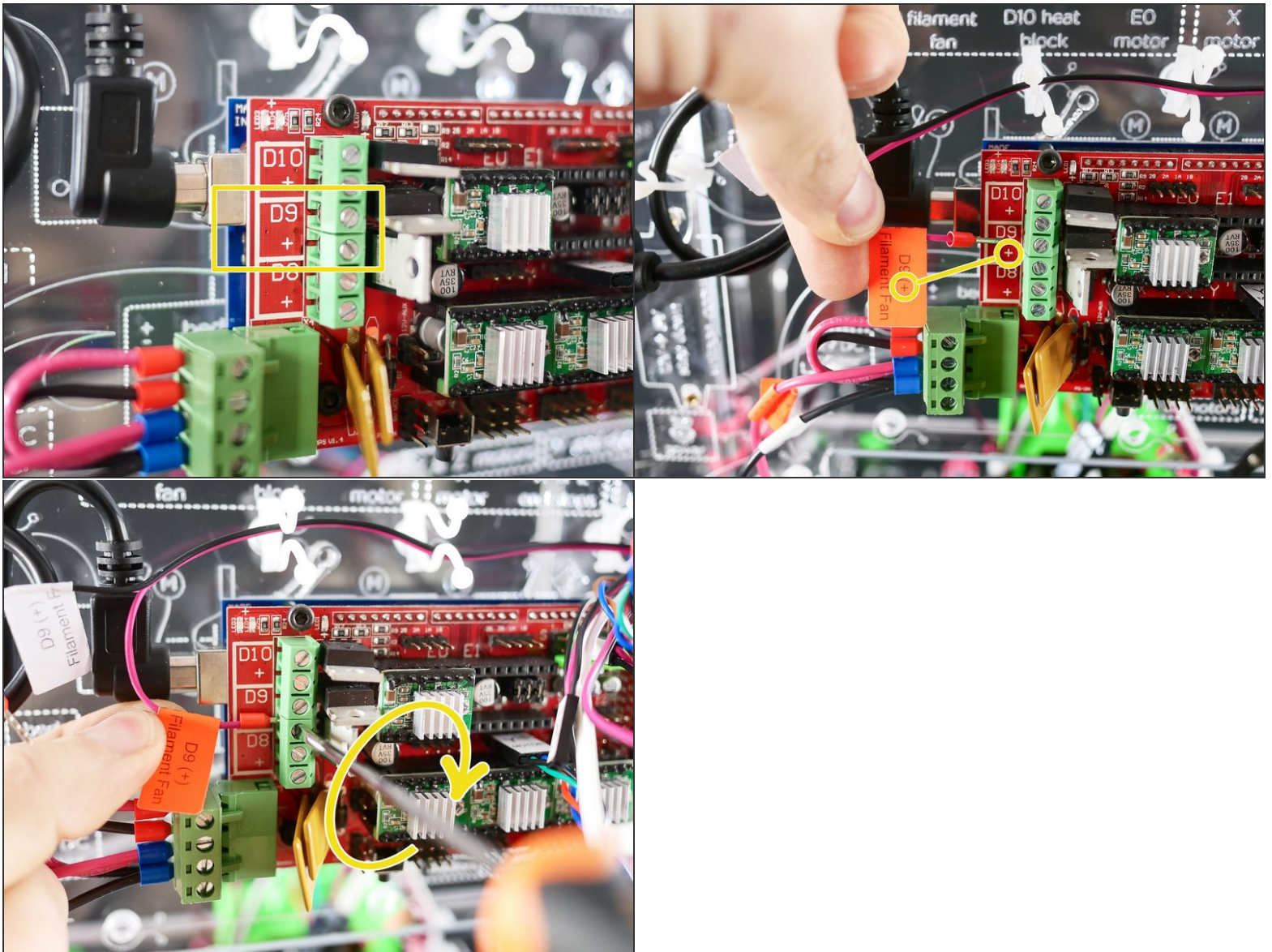
- In short, connect all the wires according to their labels. We'll start on the left.

## Step 29



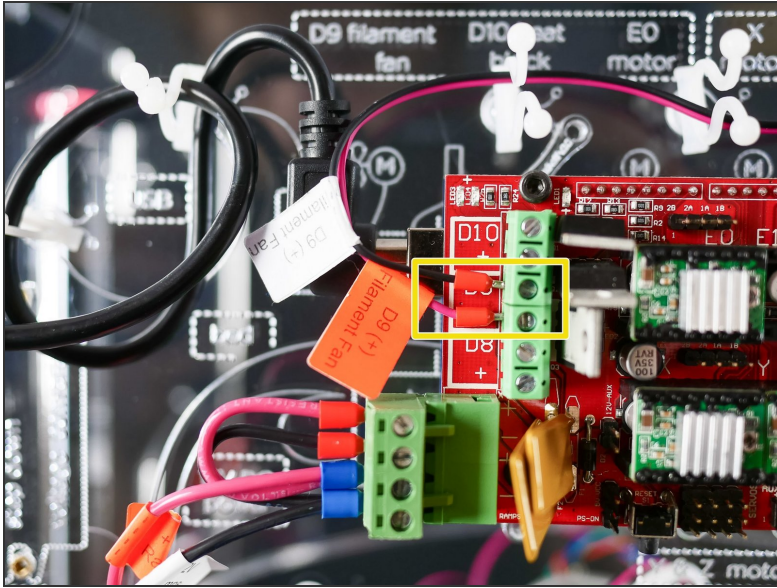


## Step 30



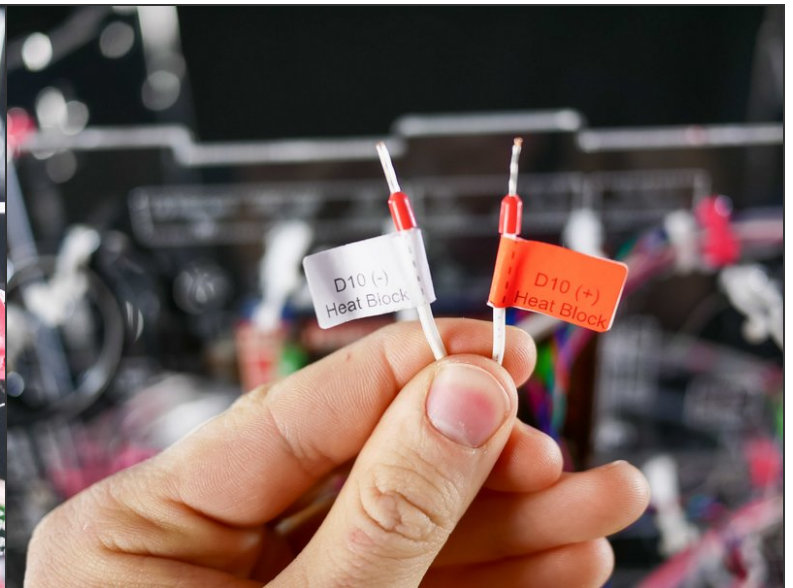
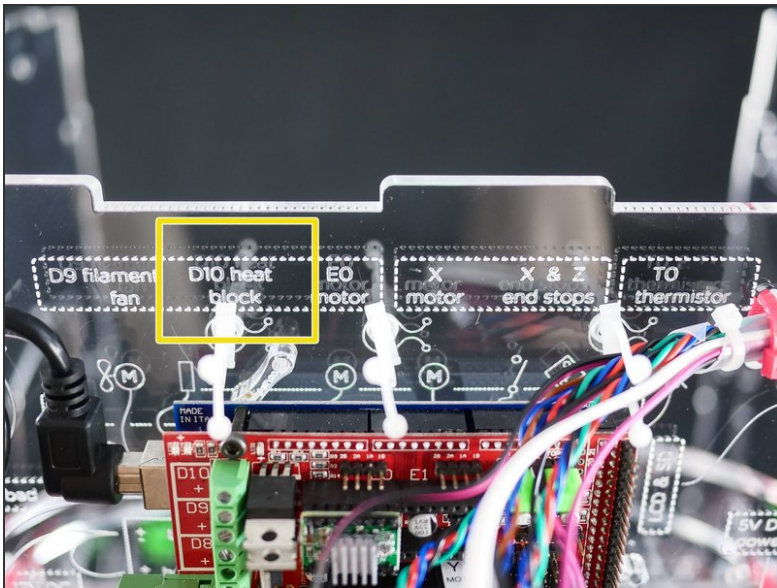
⚠ Make sure to match **plus with plus...**

## Step 31



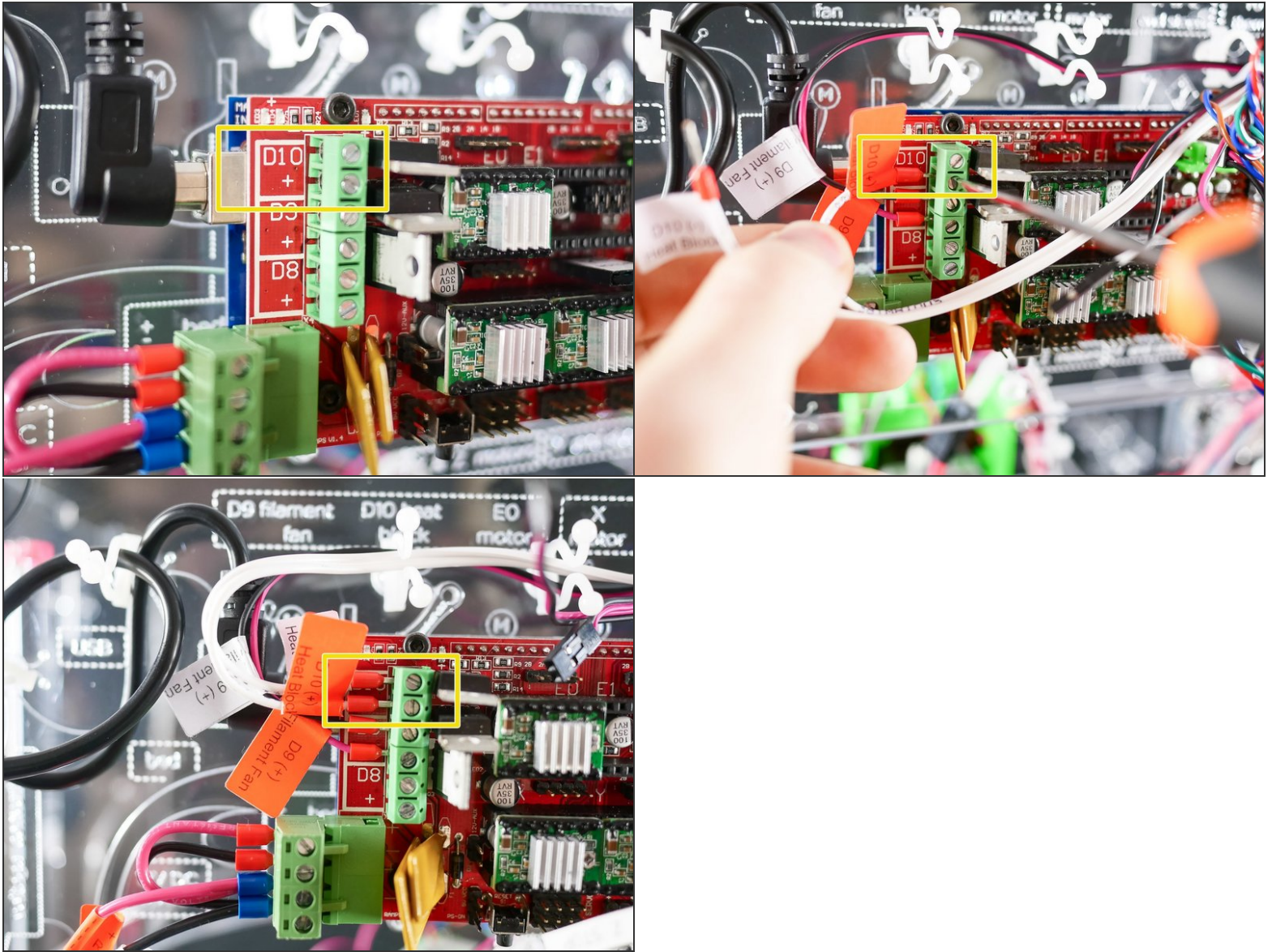
⚠ ... and minus with minus.

## Step 32



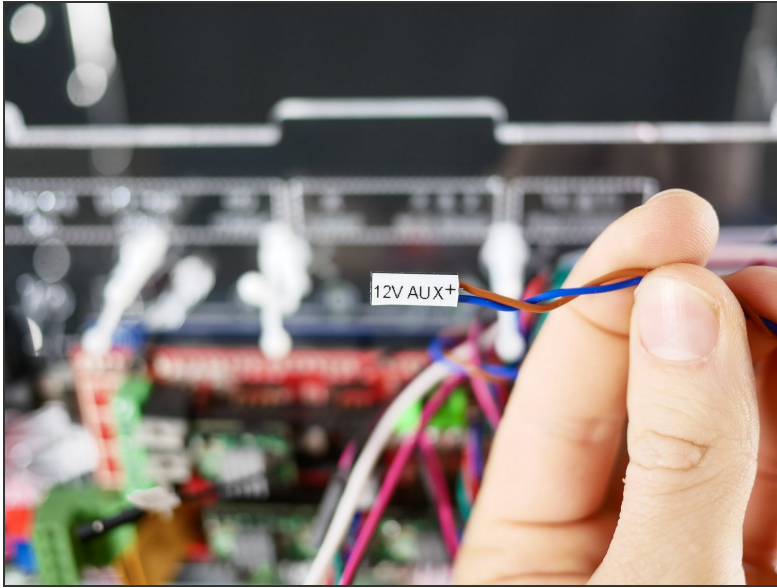


## Step 33



⚠ Make sure to match plus with plus and minus with minus.

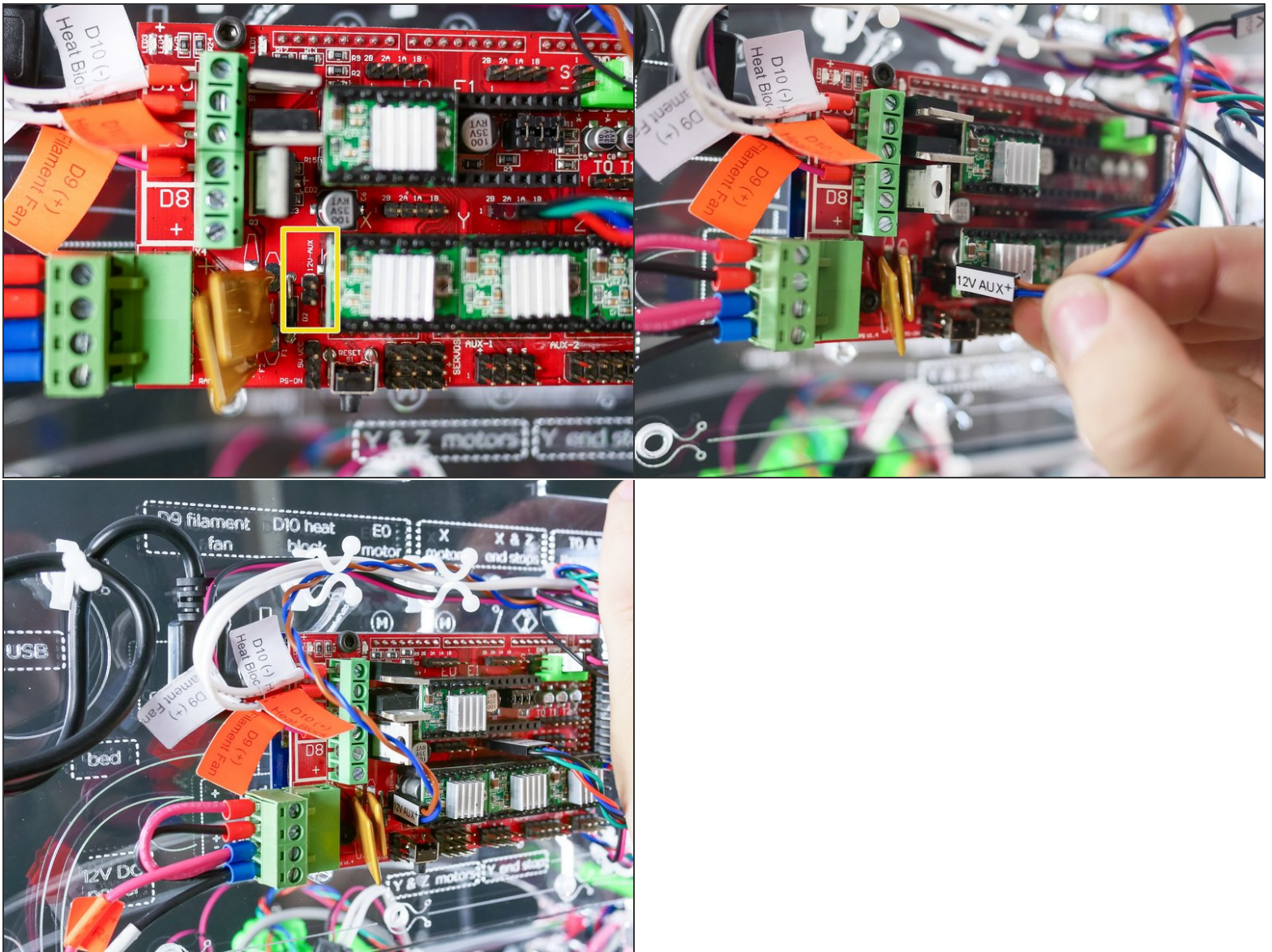
## Step 34



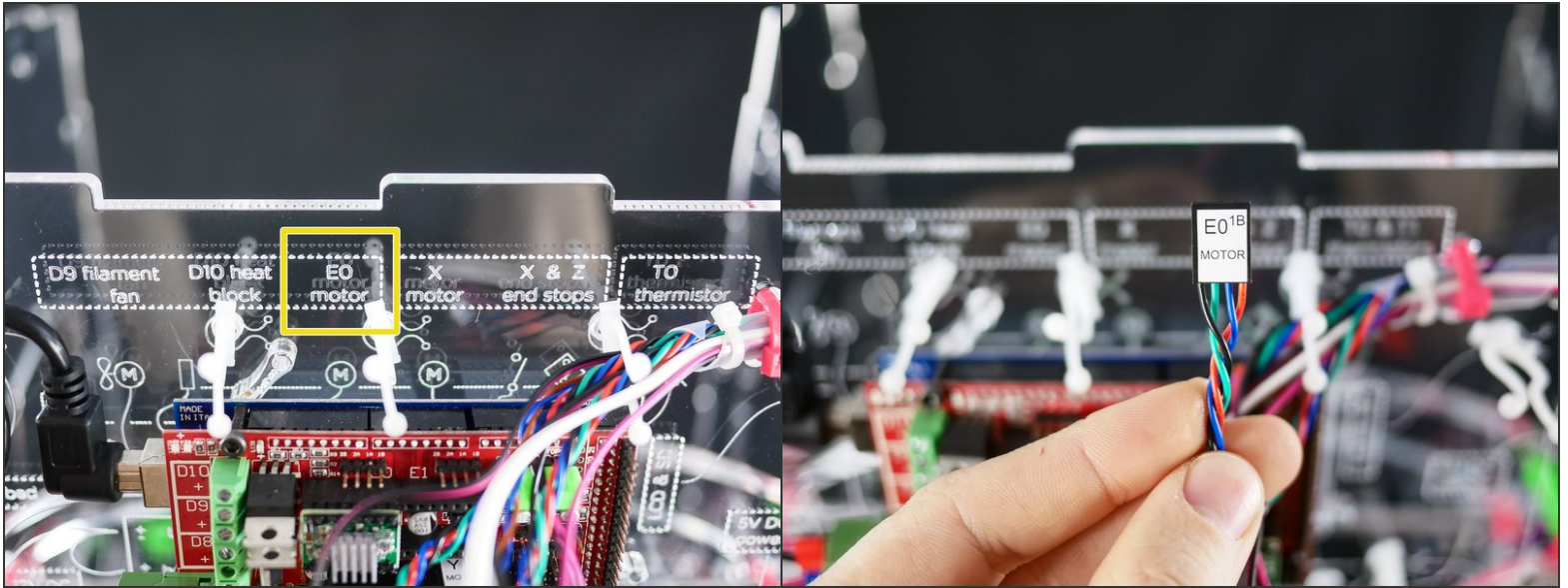
**i** This 12V line powers up the Z Probe and the Hotend fan.



## Step 35

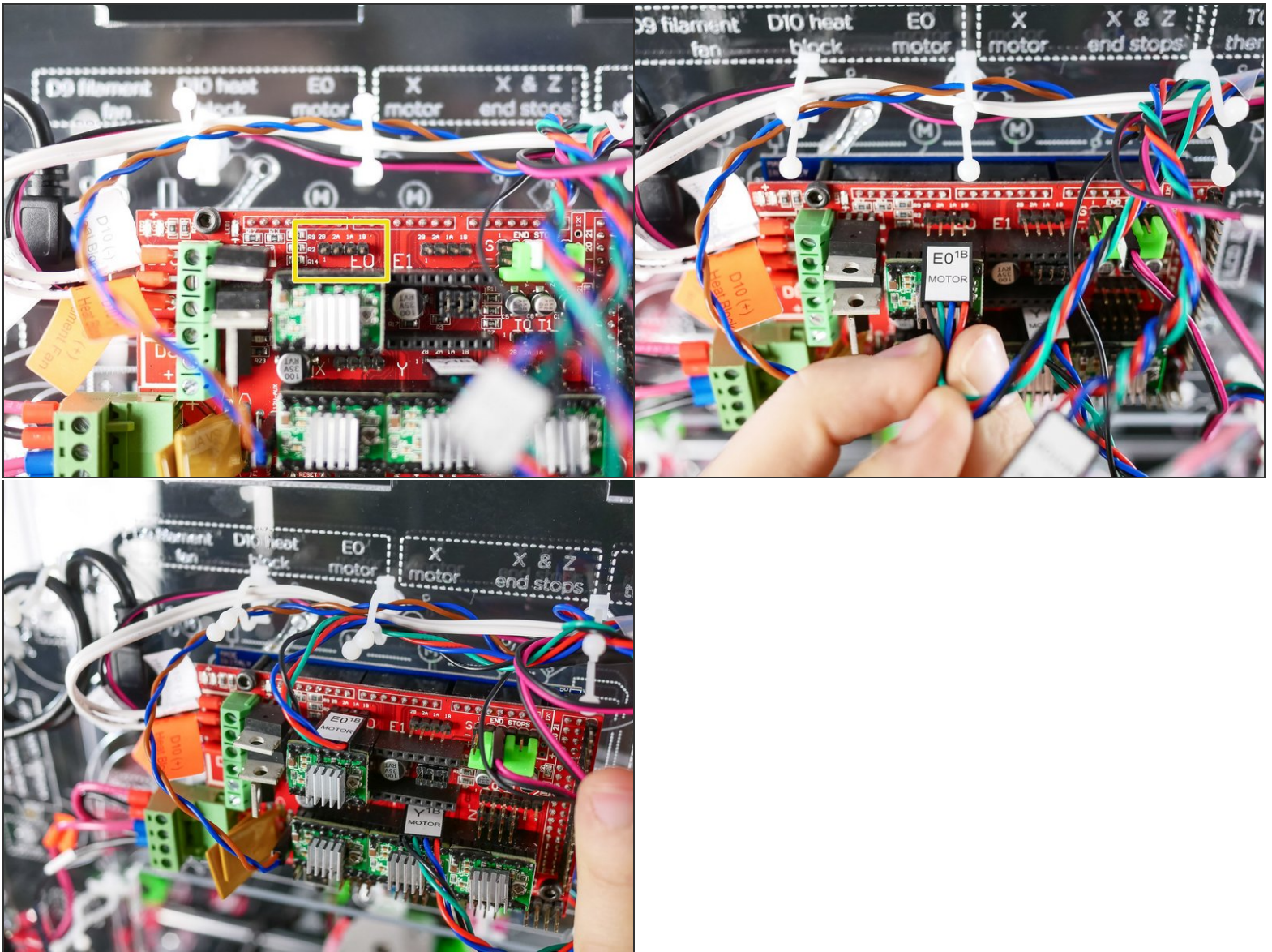


## Step 36

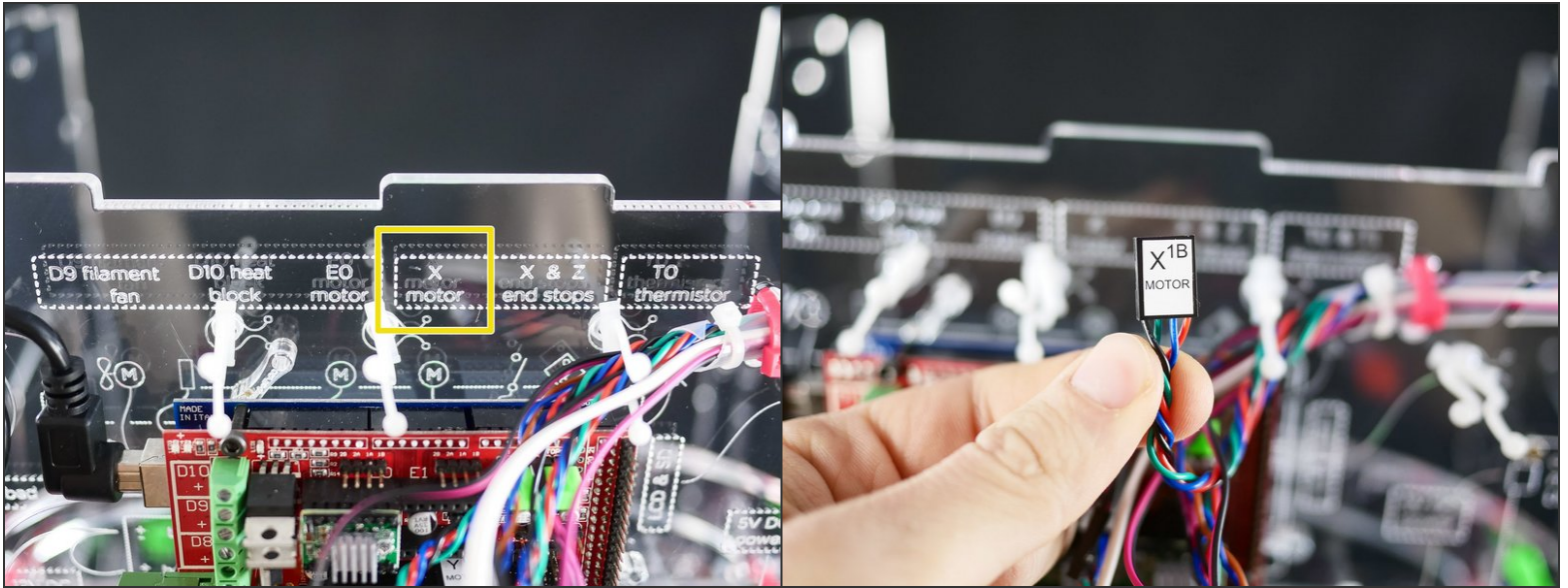




## Step 37

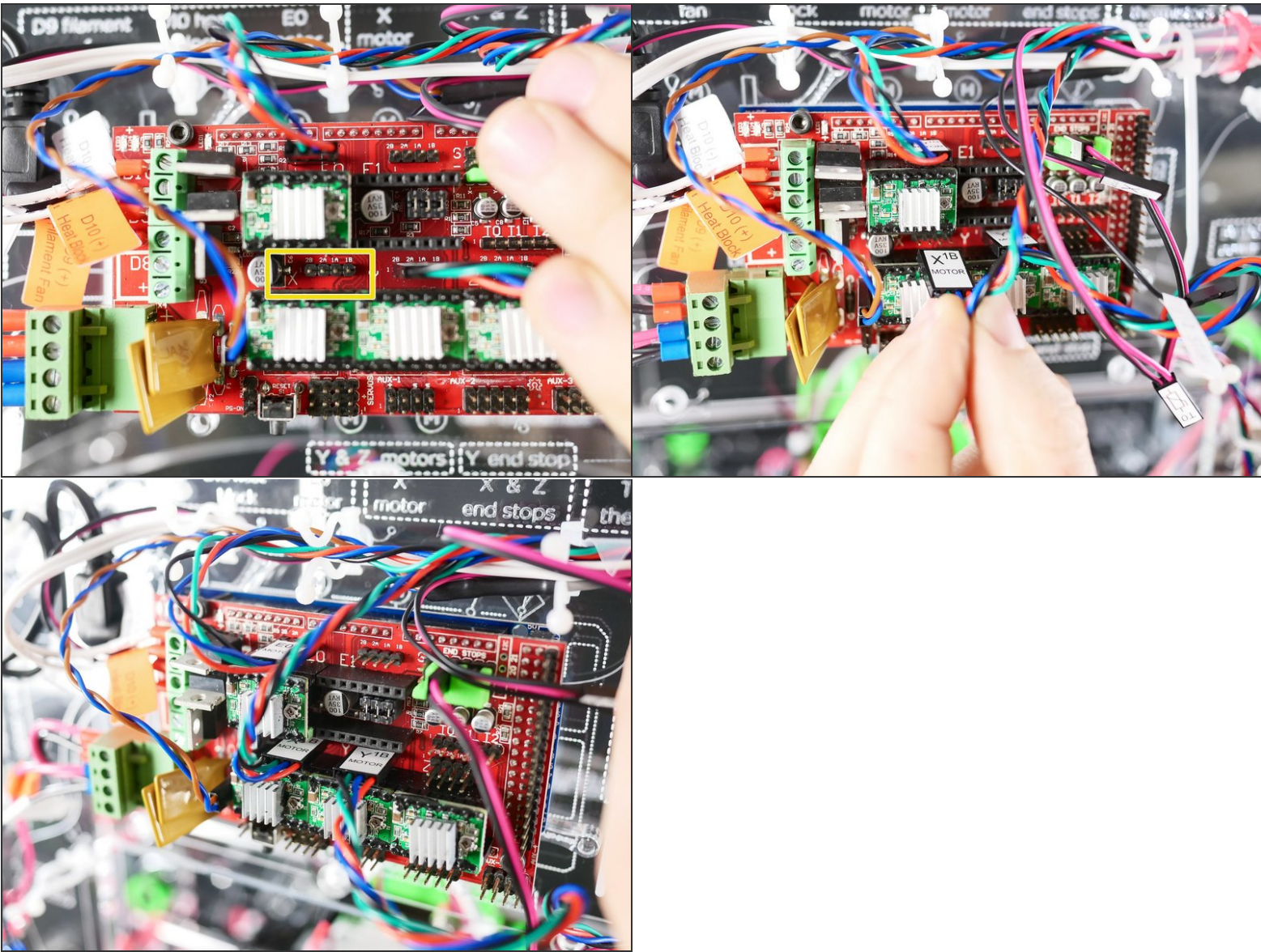


## Step 38

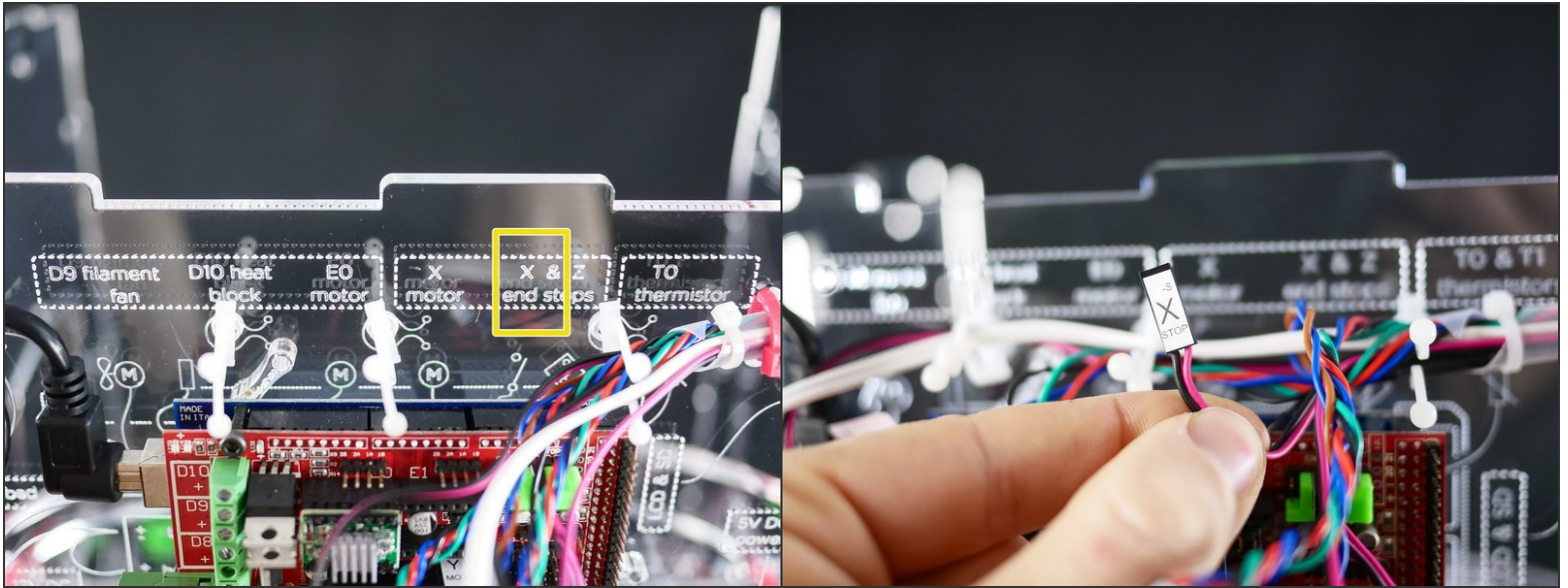




Step 39

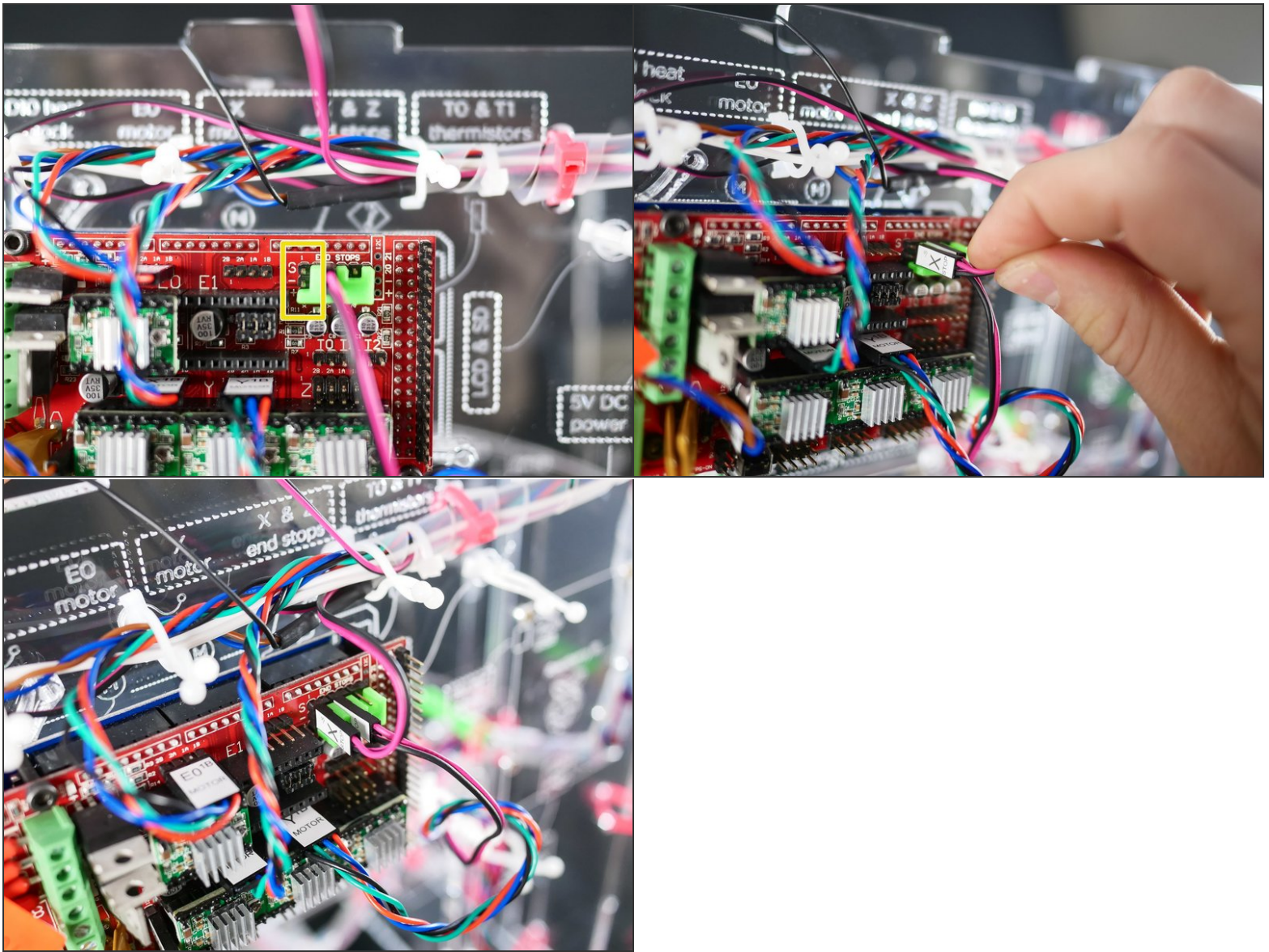


## Step 40

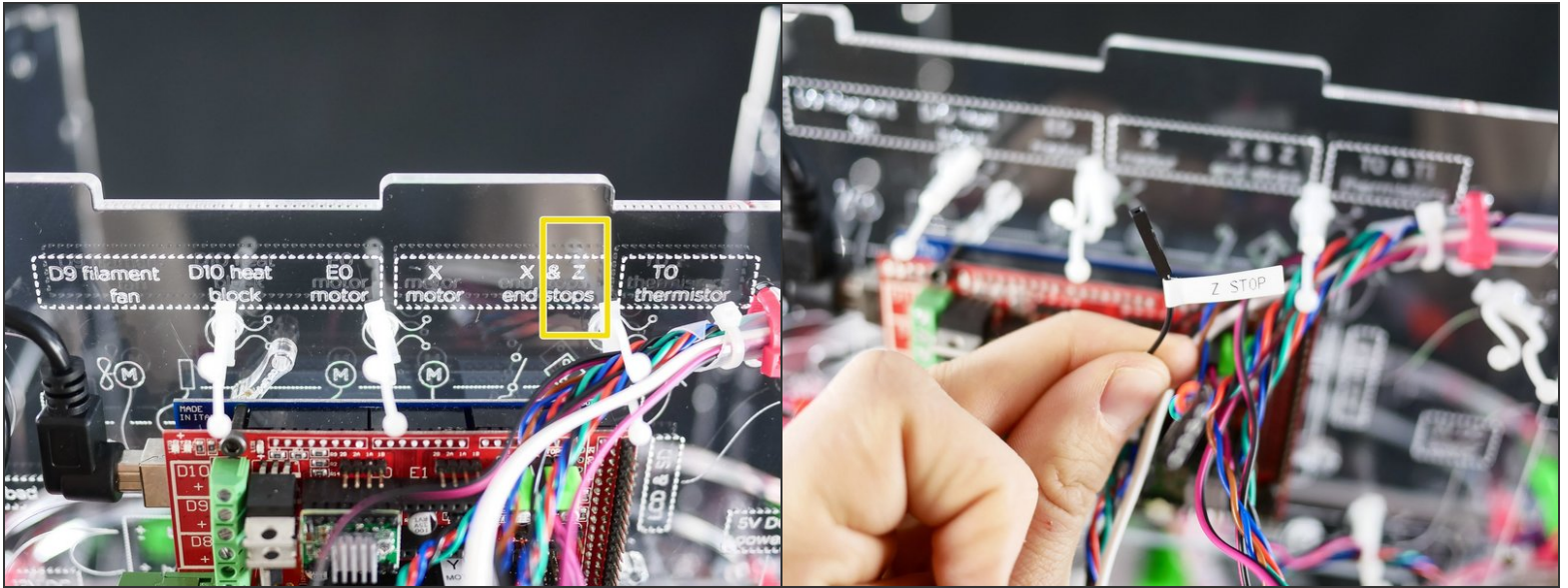




## Step 41

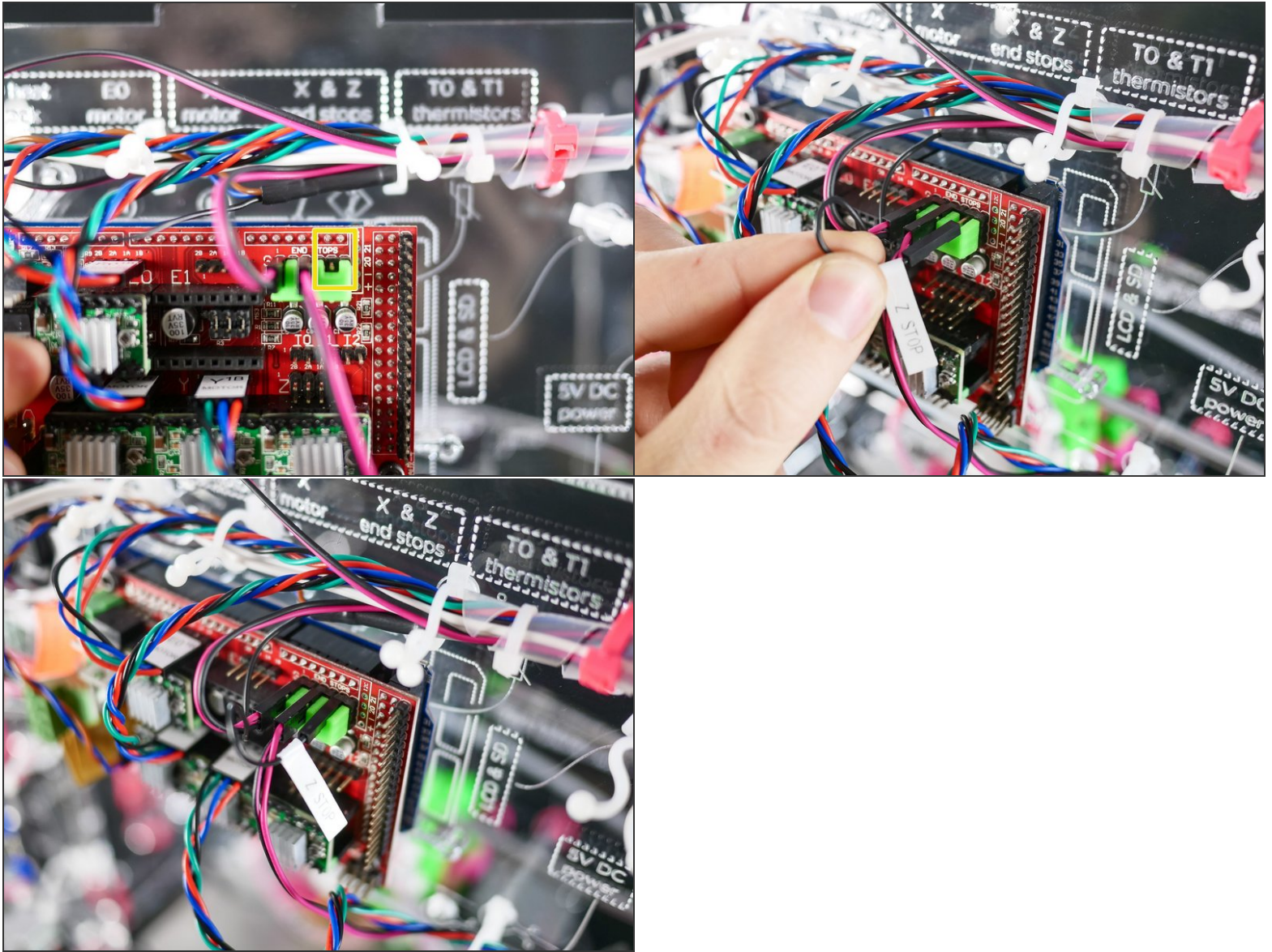


## Step 42

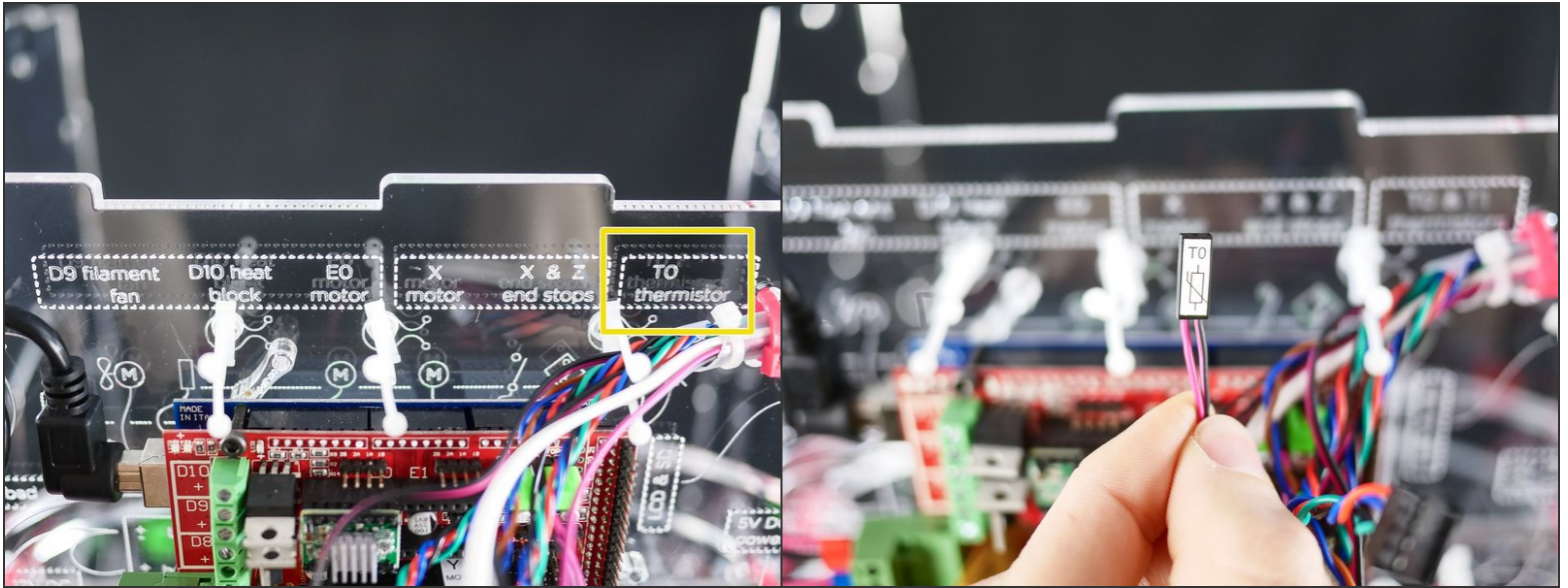




## Step 43

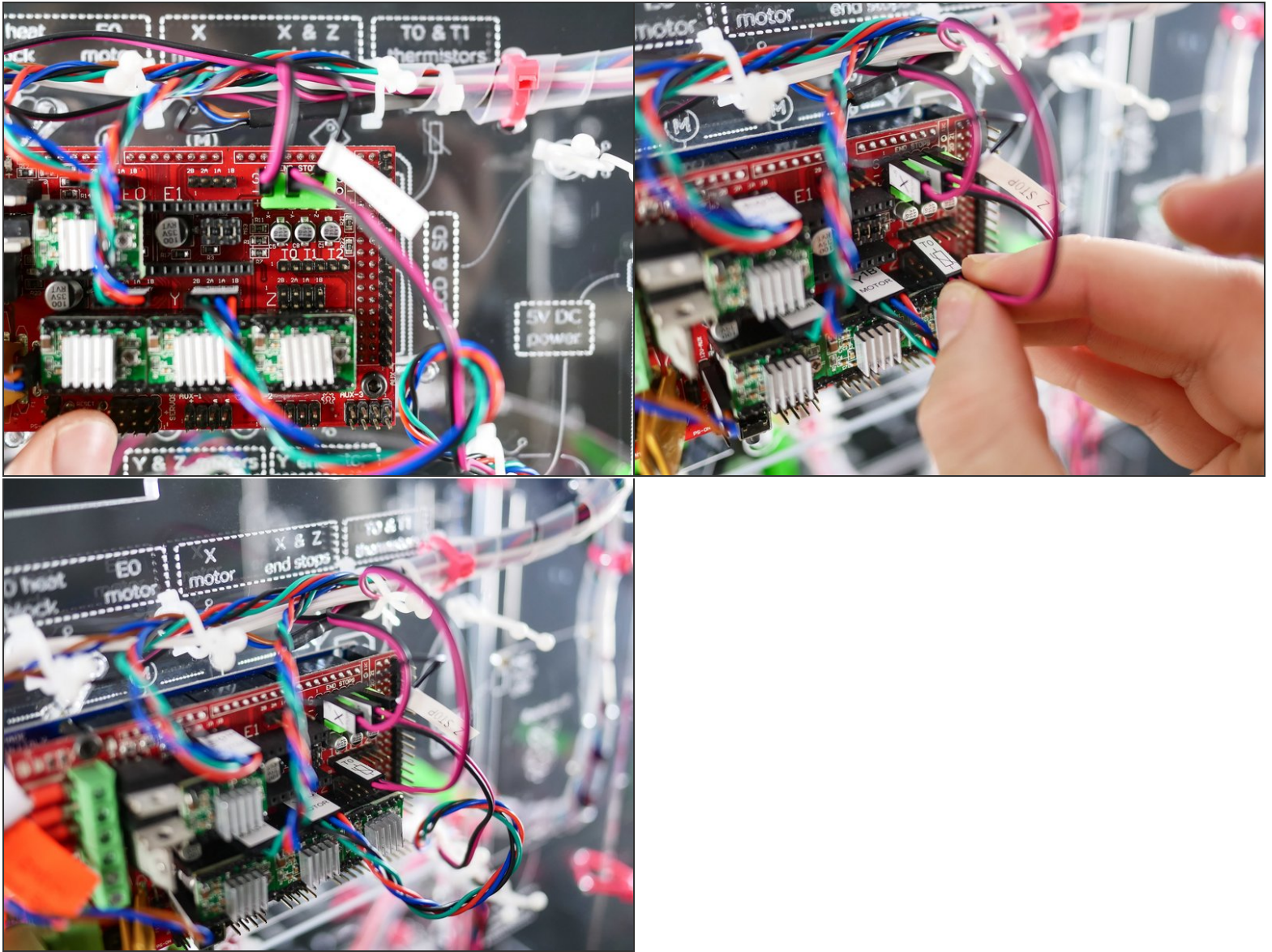


## Step 44

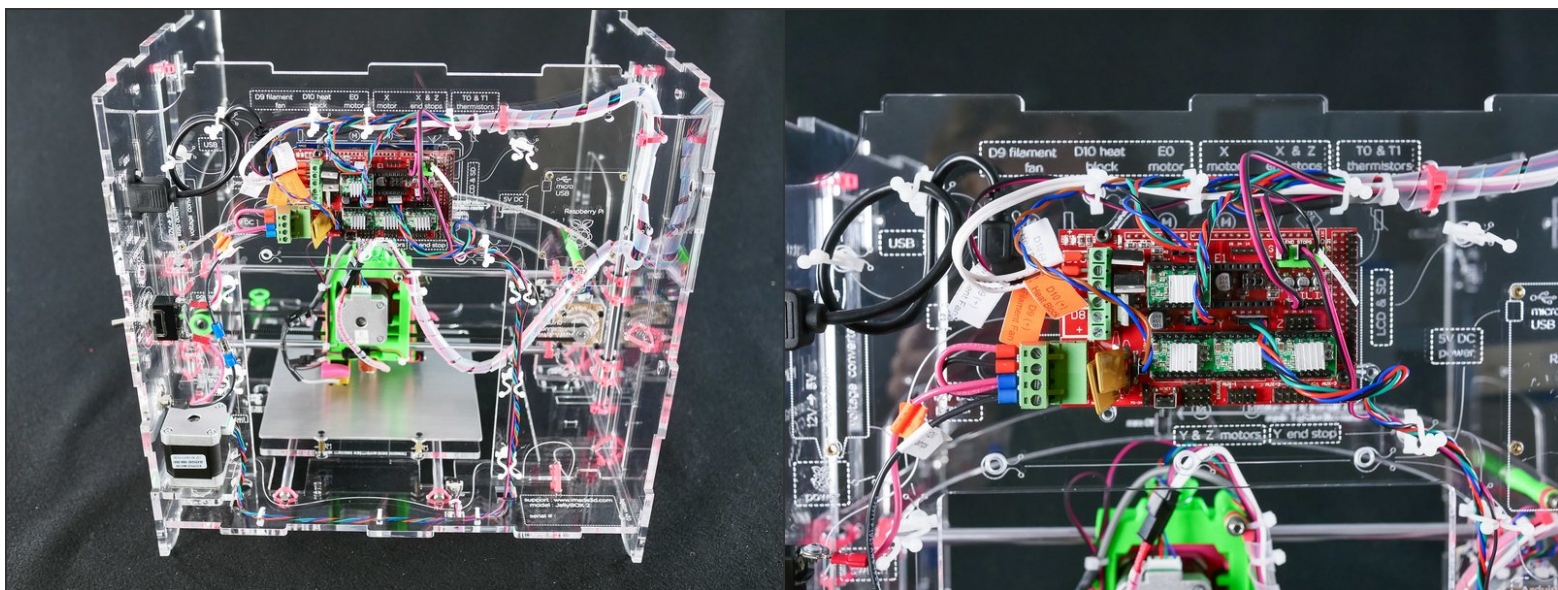




## Step 45



## Step 46 — It's wired up!



You have installed the X assembly. This is arguably the longest and most complicated part of the whole build, so, kudos!