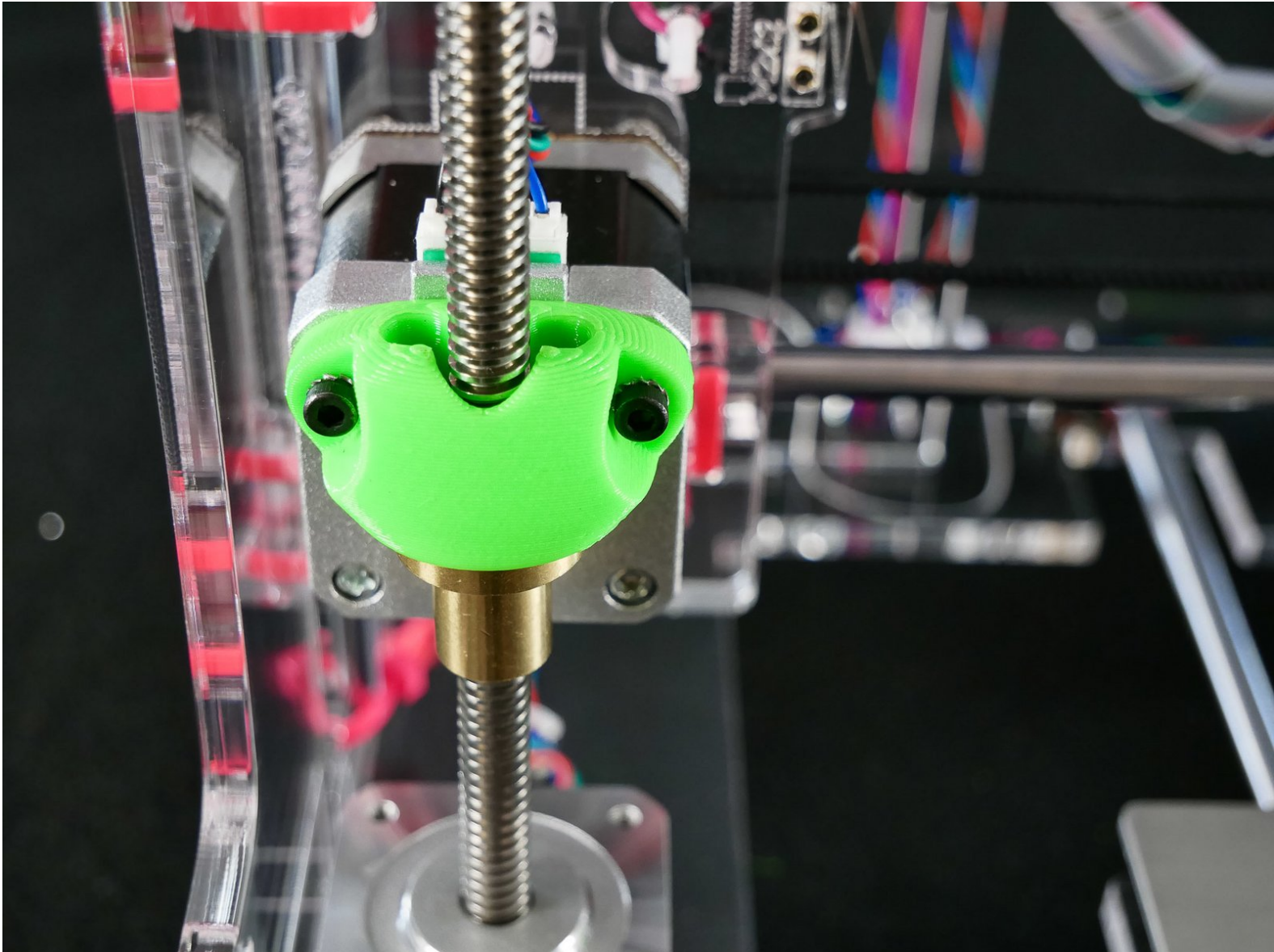




## 02. Connect the Z and X Axes

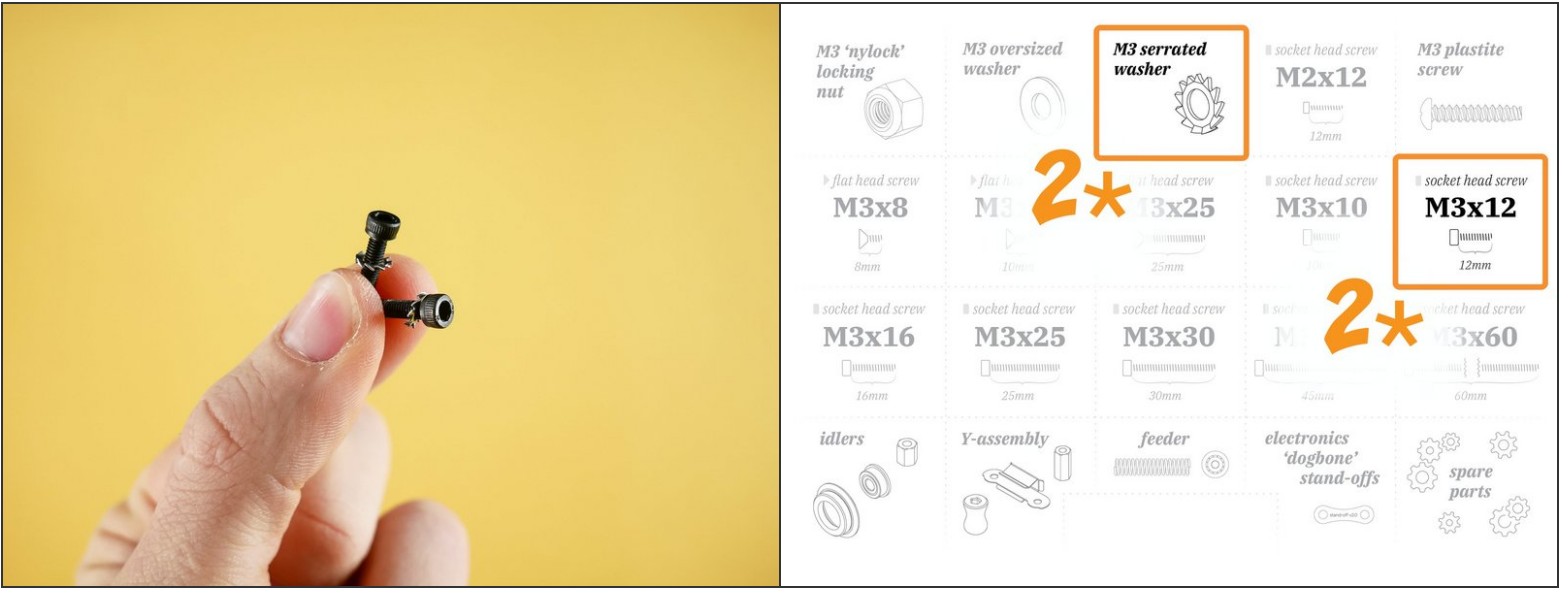
Connect the Z and X Axes



Step 1 — ↪ Prep the ZX Coupler



Step 2

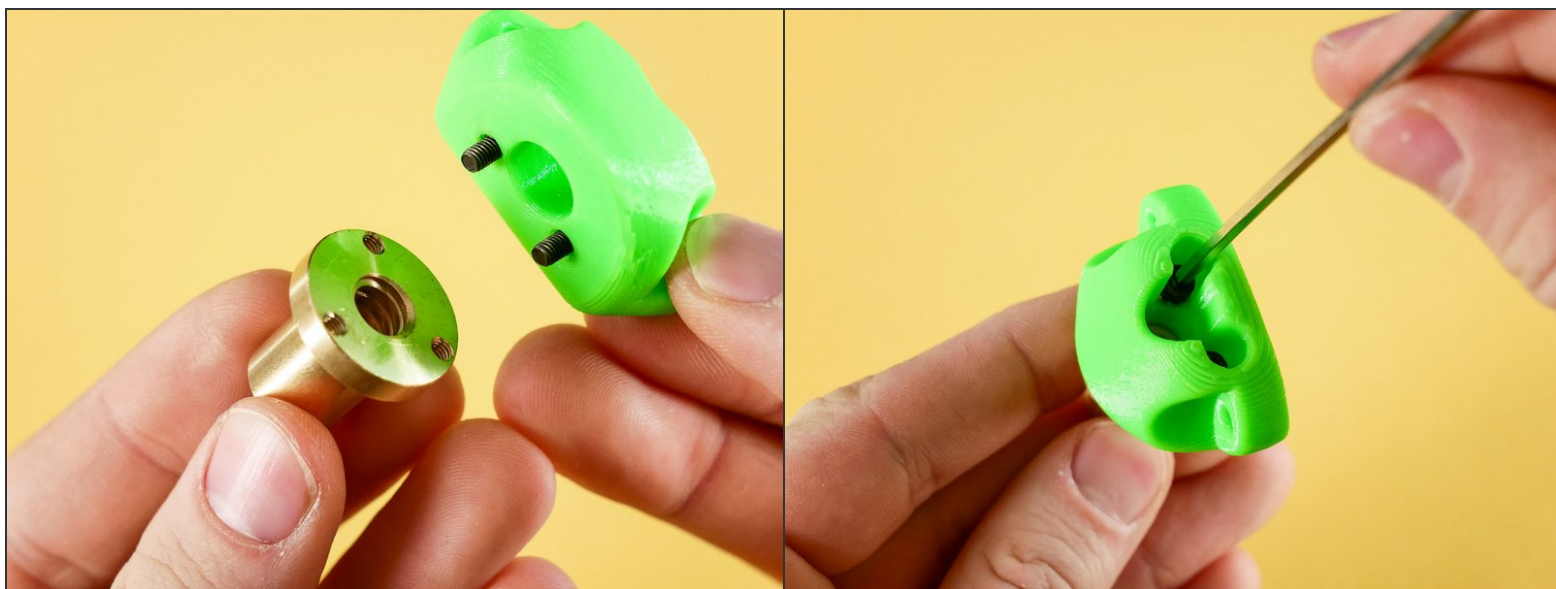


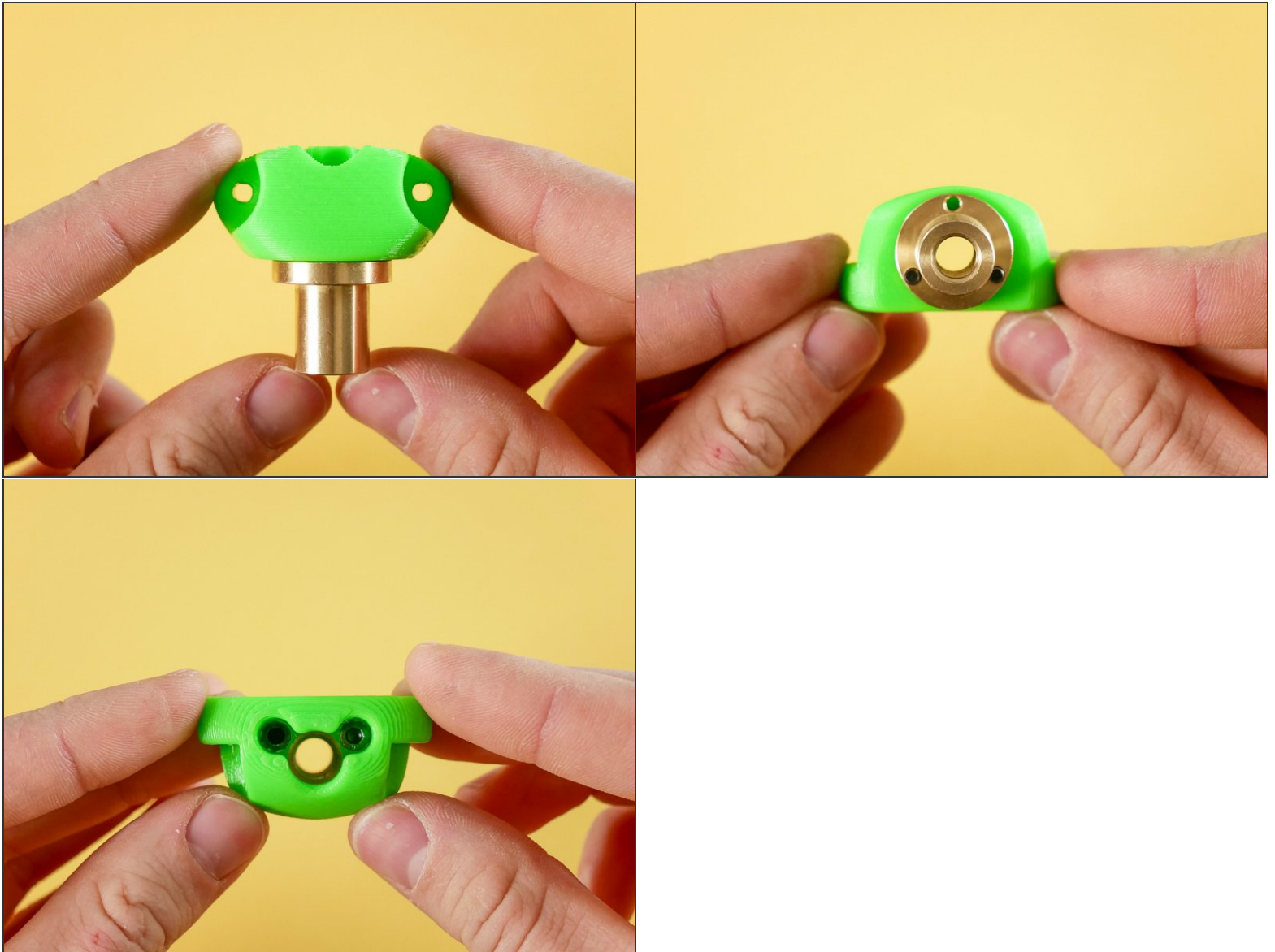


### Step 3



### Step 4



**Step 5**

Step 6 — ↪ Install the ZX Coupler

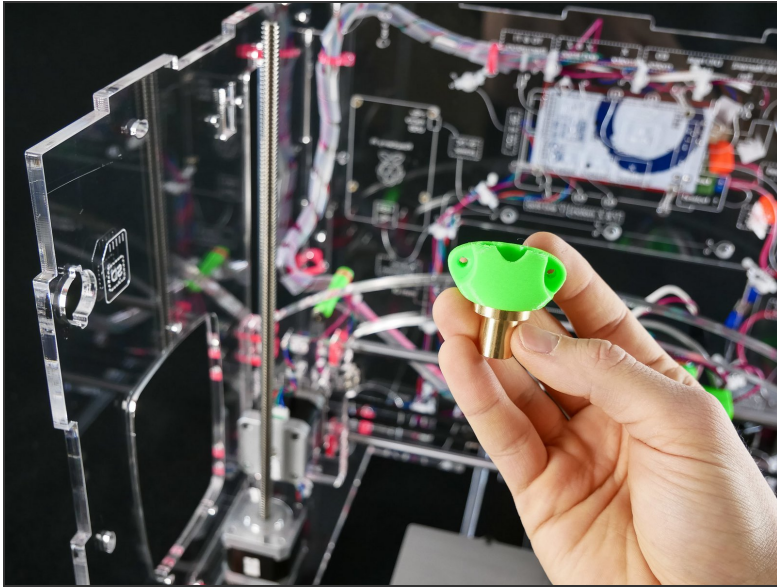


Step 7

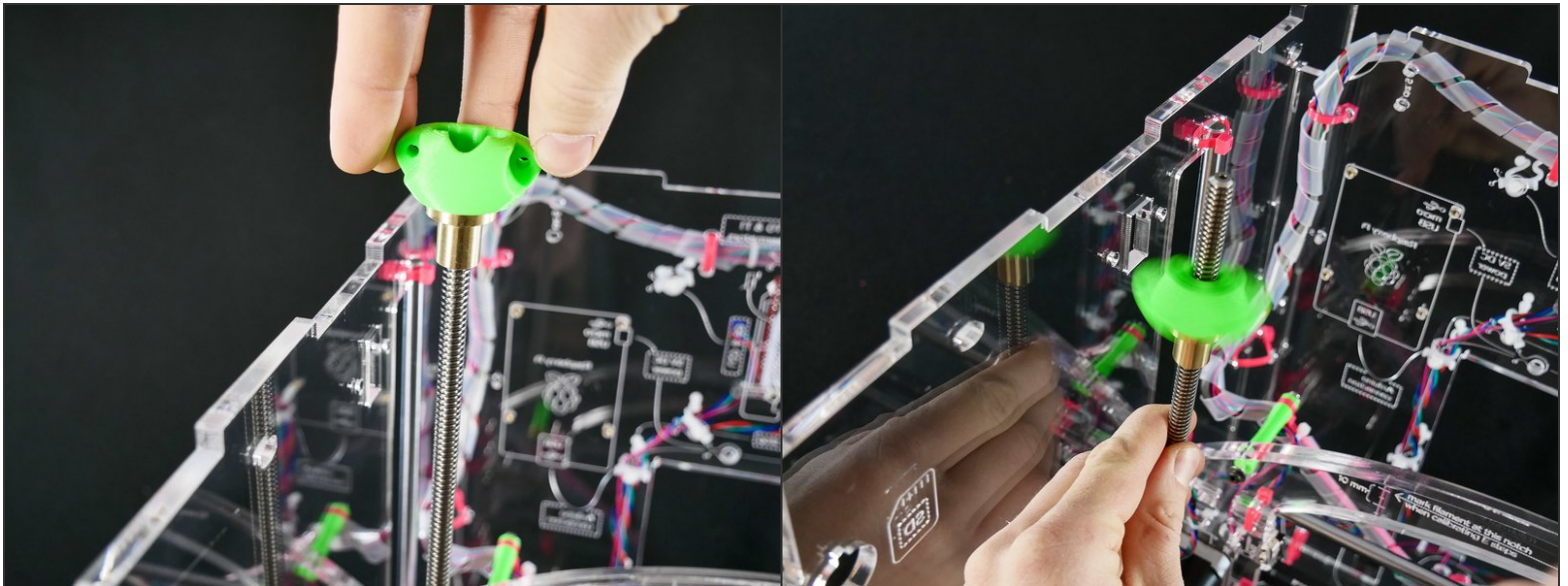




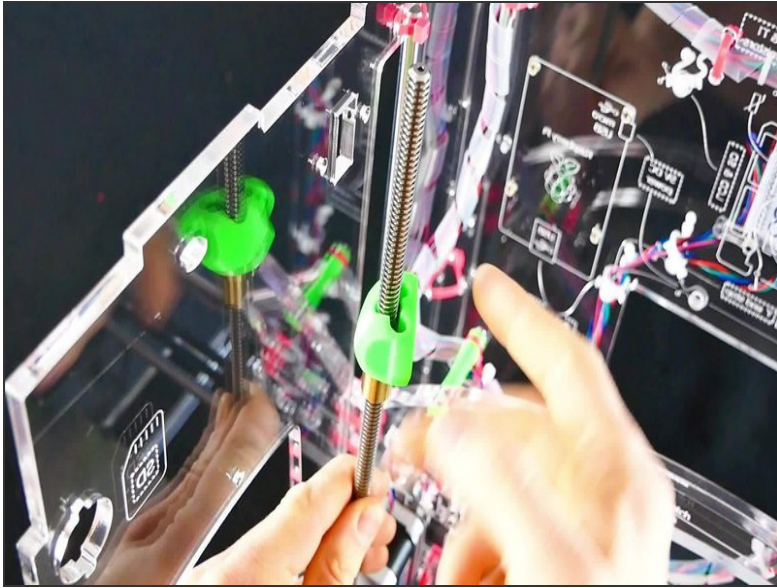
## Step 8



## Step 9



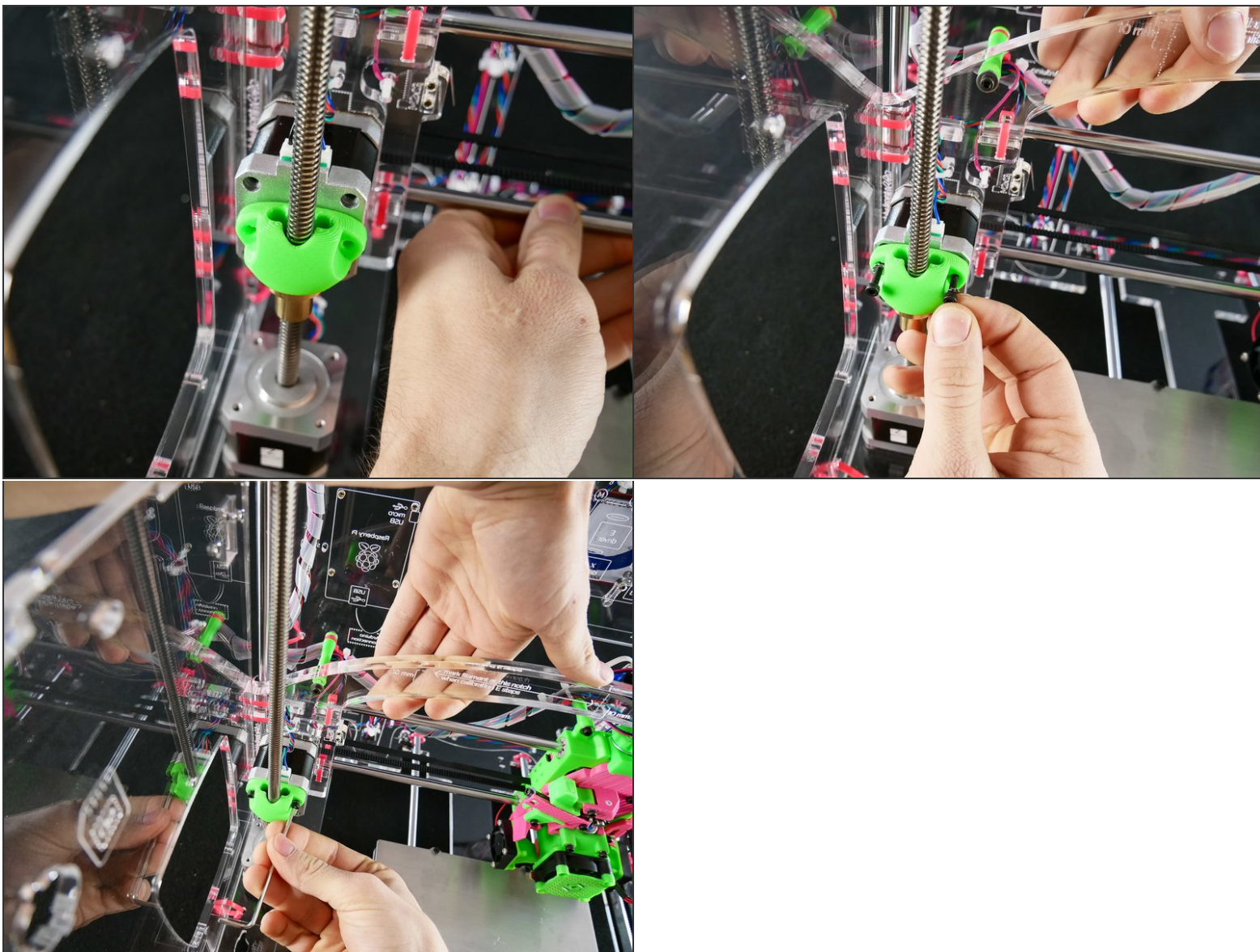
## Step 10



- ► Video: Coupler Spin (2s)



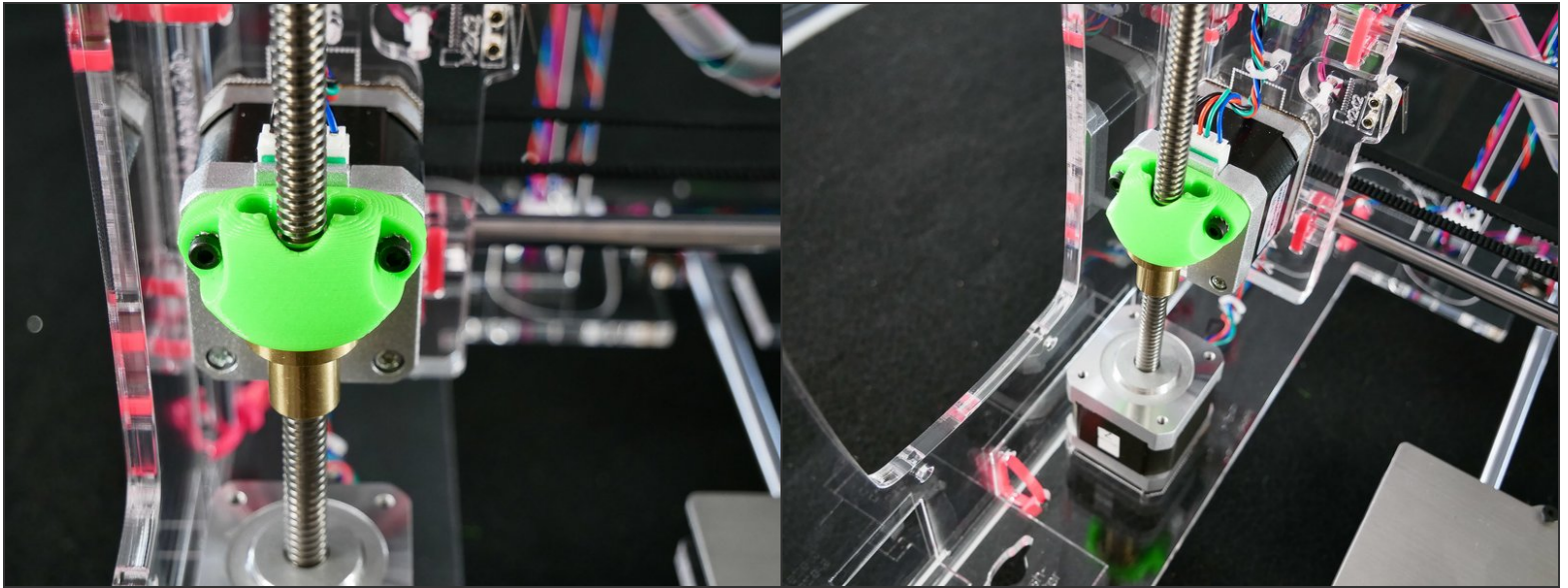
## Step 11



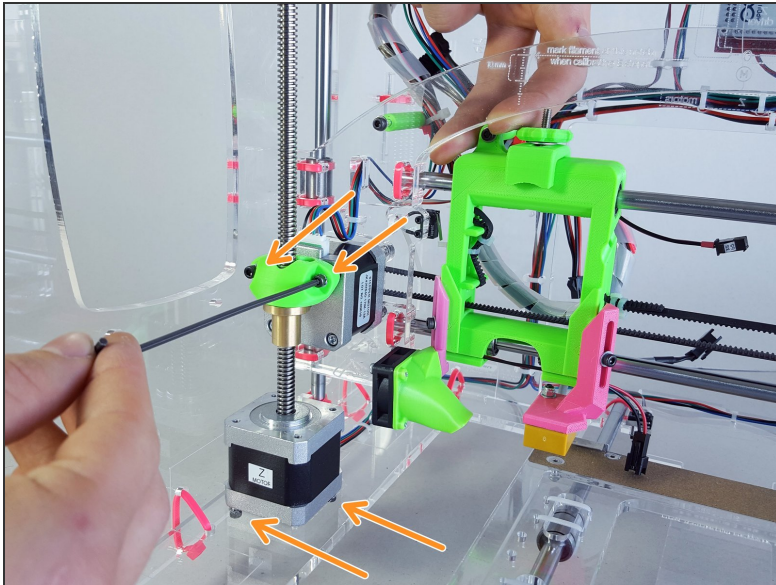
- ☑ Hold the X assembly up with one of your hands so that the holes are well aligned.
  - Otherwise, the misalignment caused by gravity will make it difficult to screw in the screws.



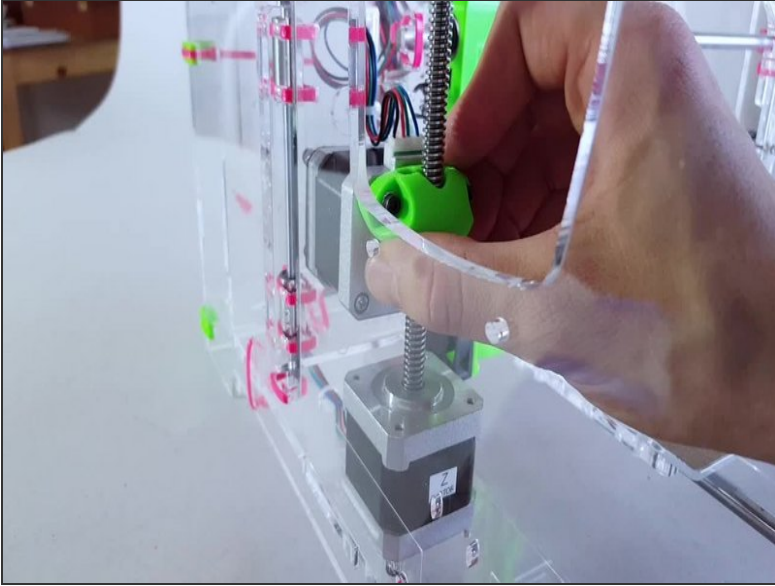
## Step 12 — Looking good!



## Step 13 — ↵ (Self-)Align the Z Motor



- Make sure the ZX coupler and Z motor screws are **LOOSE**

**Step 14 — ► Video: (Self-)Align the Z Motor**

- Put the printer on the edge of a table to expose the Z motor screws.
- Rotate the Z lead screw by hand to find the Z motor position in which the movement is the smoothest.
- Moderately tighten X screws.
- Only lightly tighten Z screws. Tight is bad!