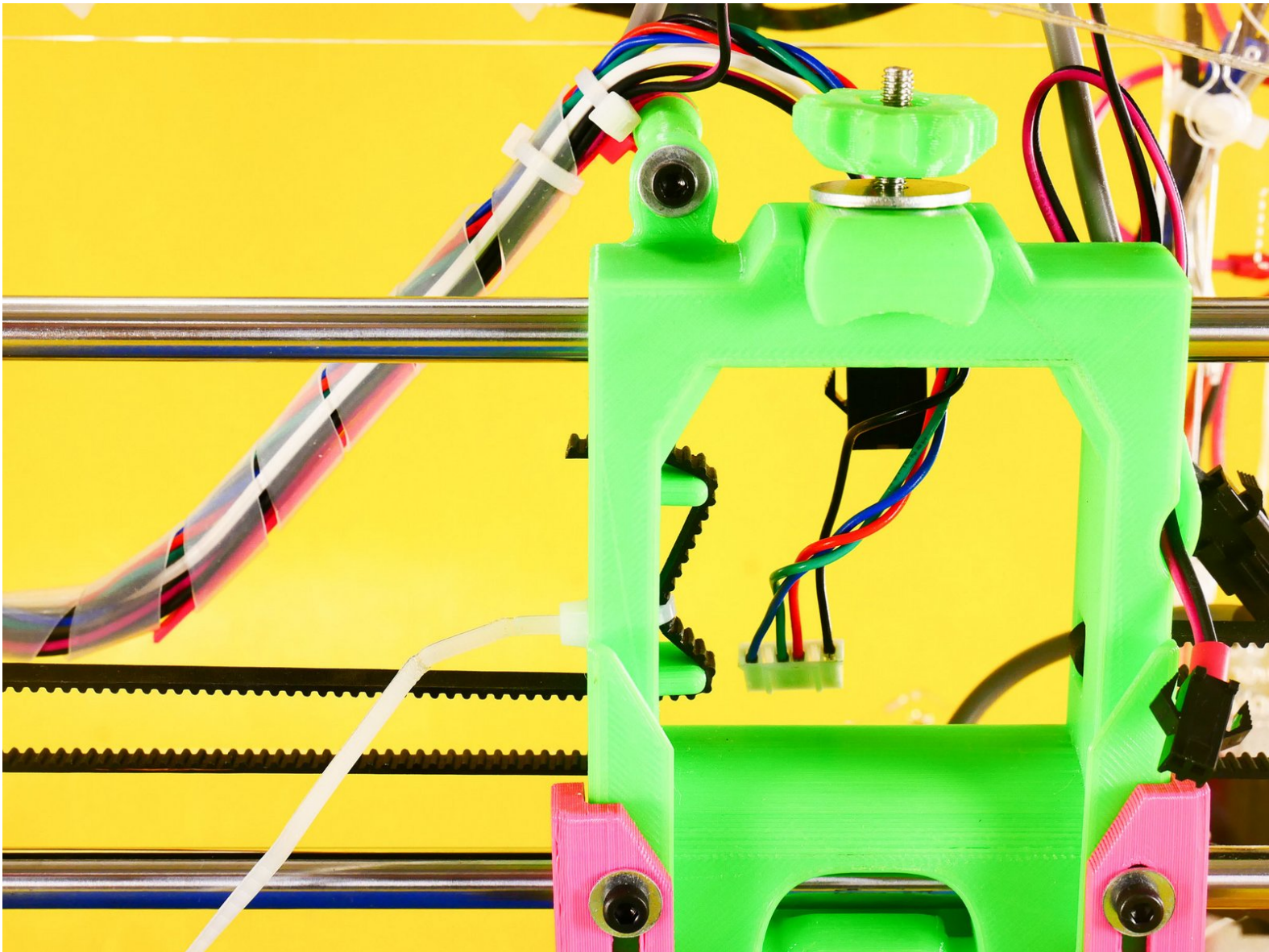
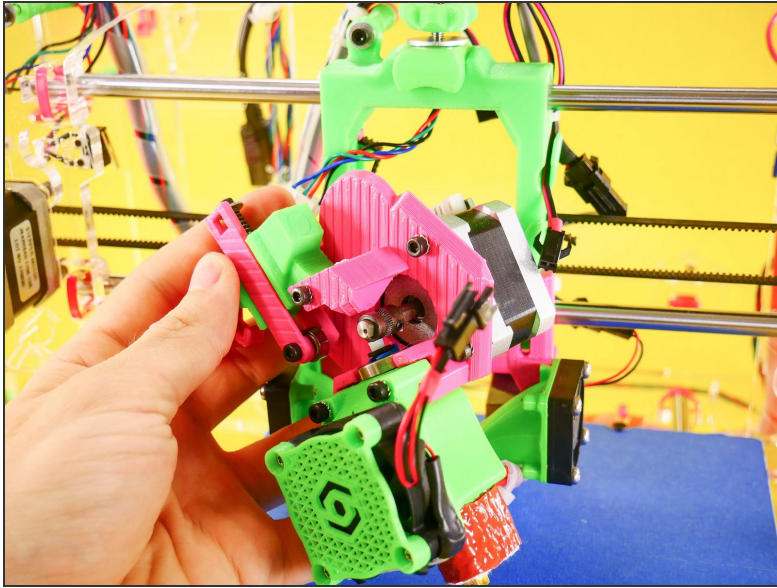




06. Tighten Your Belts



Step 1 — ↳ Tighten the X Belt



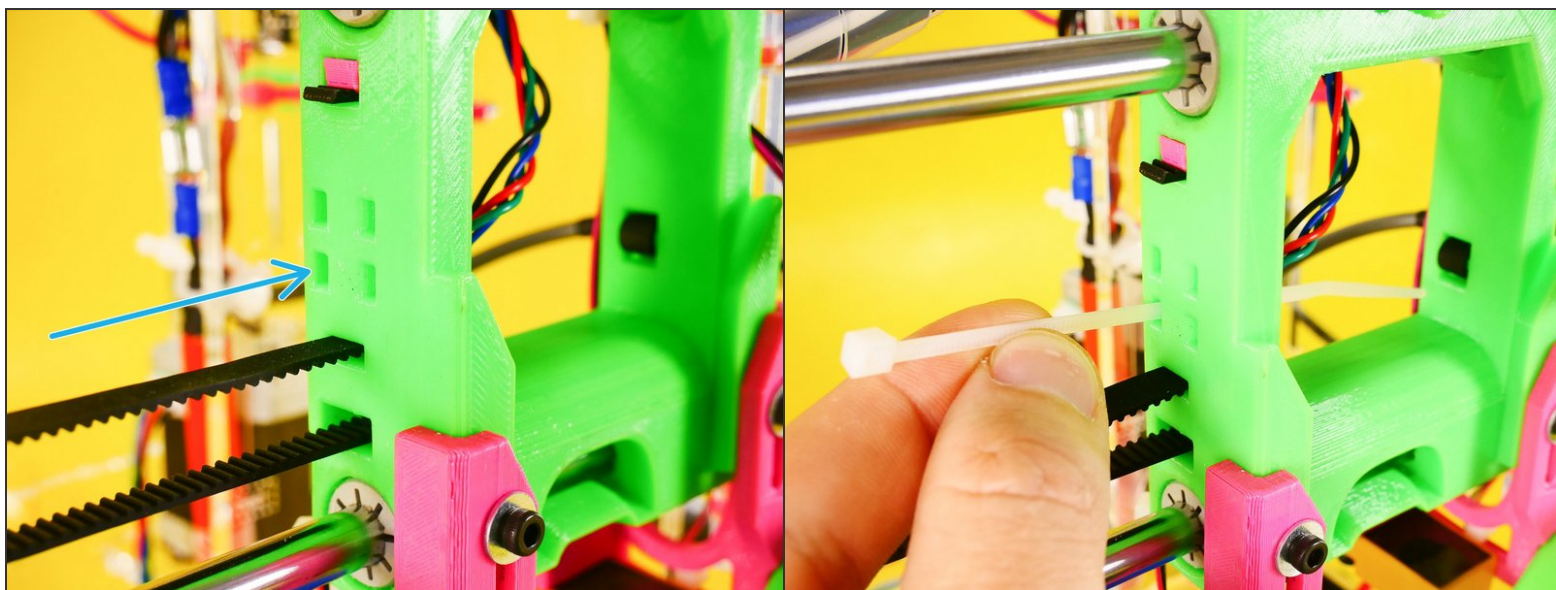
- Remove the extruder

Step 2



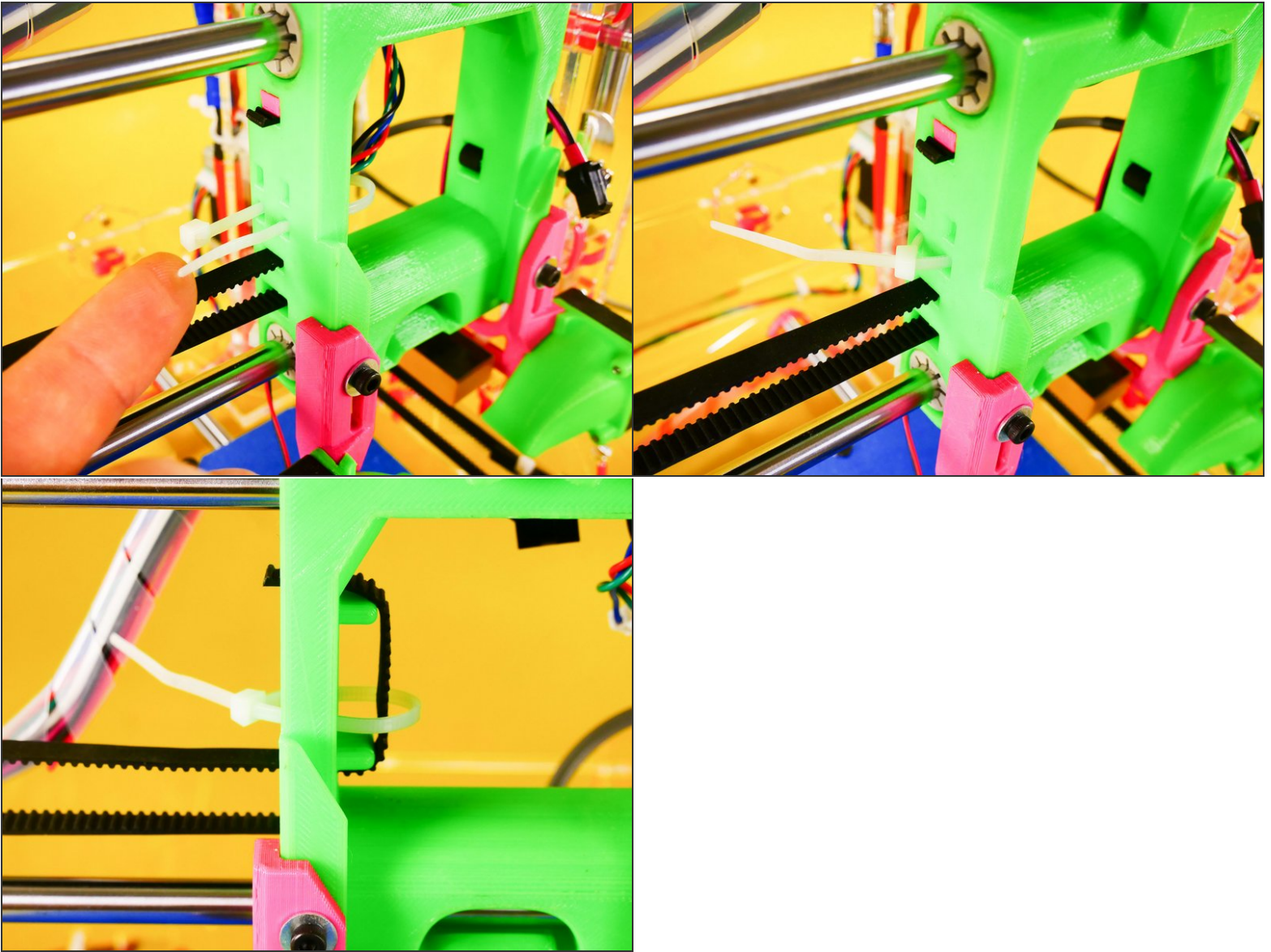
- Insert wisdom here.

Step 3



- Insert wisdom here.

Step 4

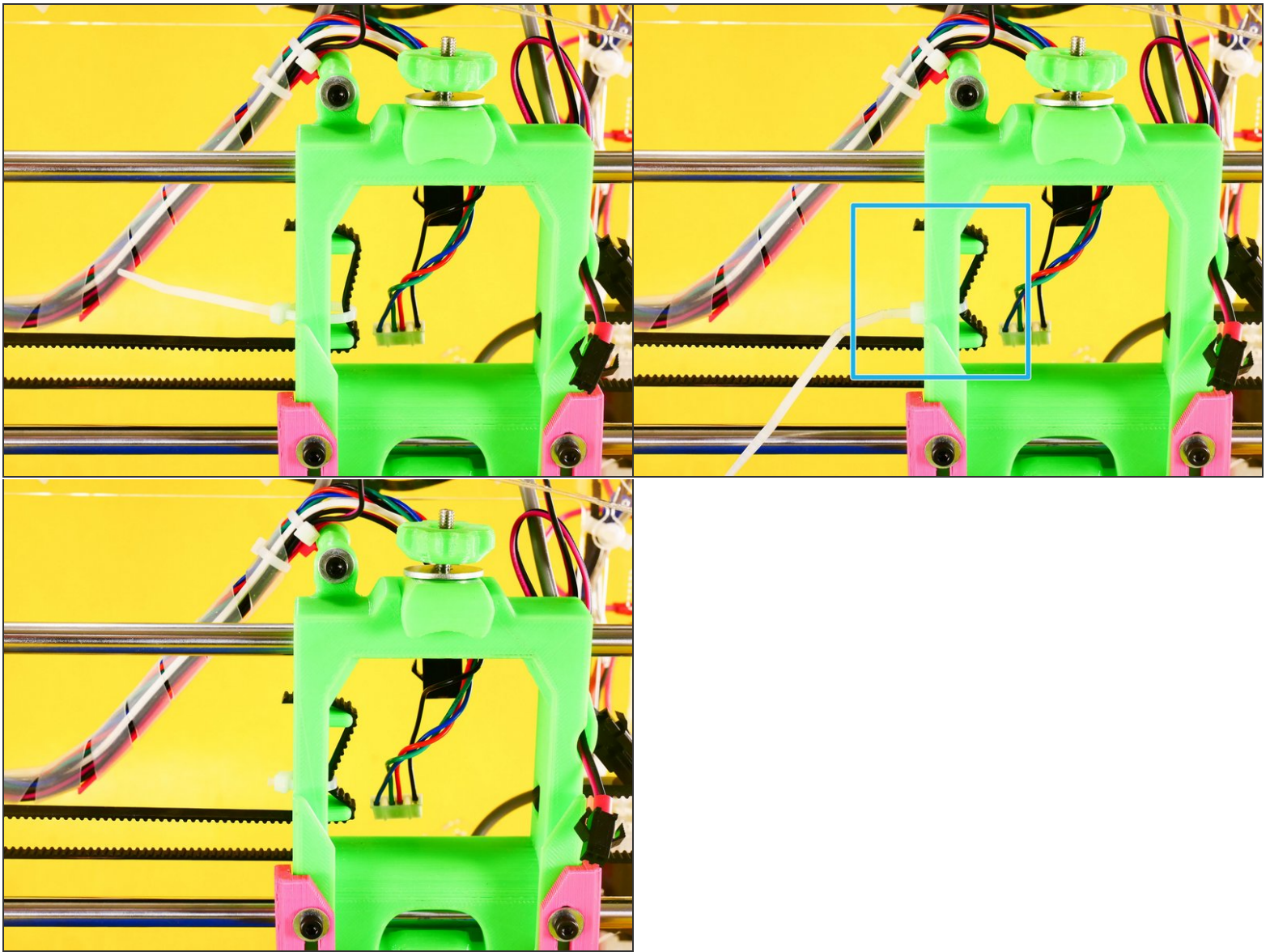


- Insert wisdom here.

Step 5 — ► Video: Tighten the X Belt (30s)

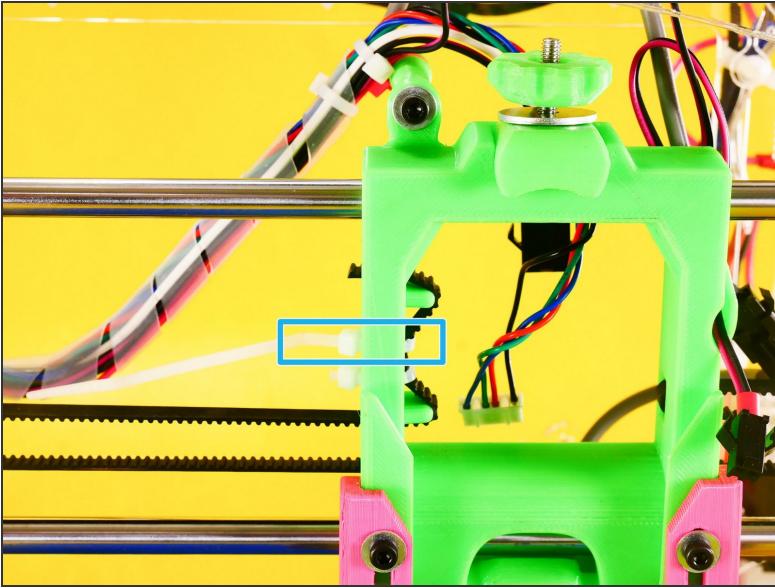
- ► Video: Tighten the X Belt (30s)

Step 6



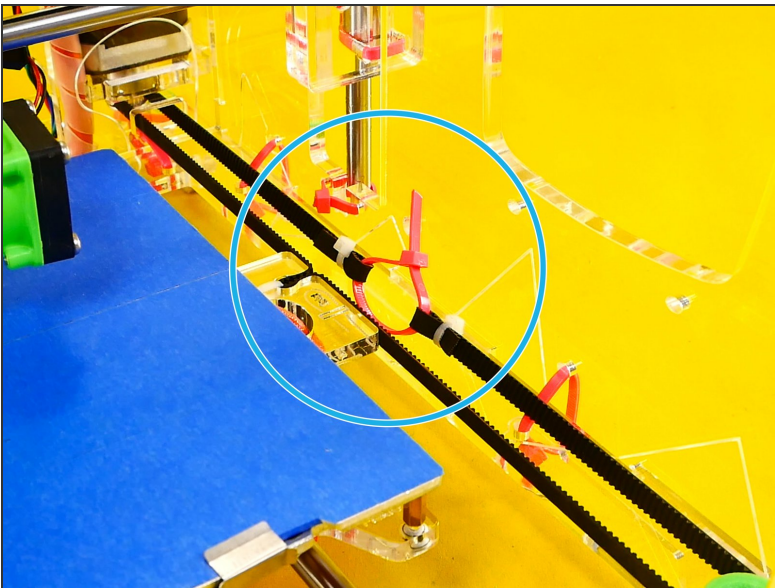
- Insert wisdom here.

Step 7



- *IF* you cannot achieve moderate tightness (watch the included video) with one zip tie, you can add a 2nd one.

Step 8 — ↳ Tighten the Y Belt



- Tighten the Y belt zip tie just like you just have tightened the X belt zip tie.

Step 9 — ► Video: Tighten the Y Belt (30s)

- ► Video: Tighten the Y Belt (30s)

Step 10 — ► Video: Tighten the Y Belt

- ► Video: Tighten the Y Belt