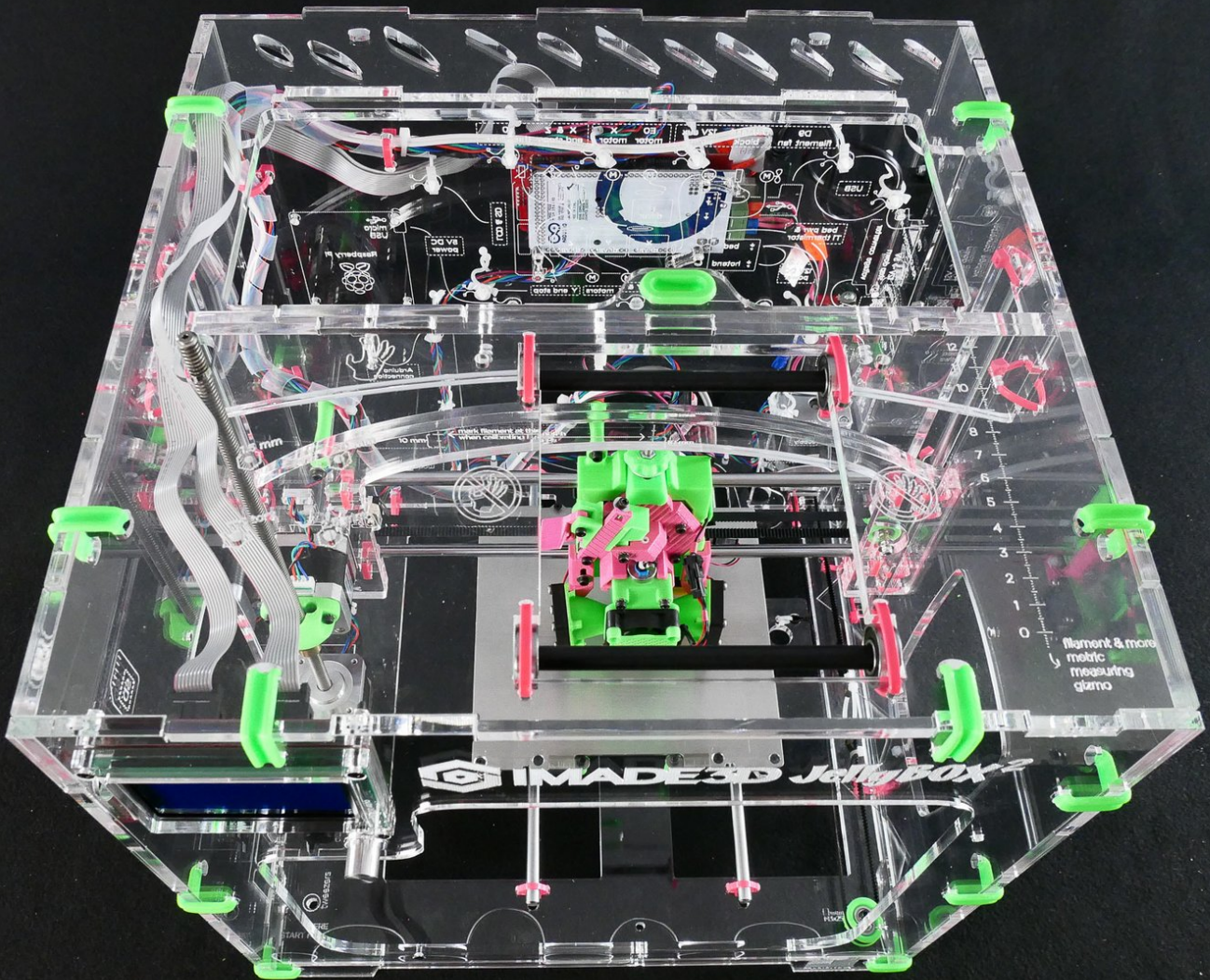


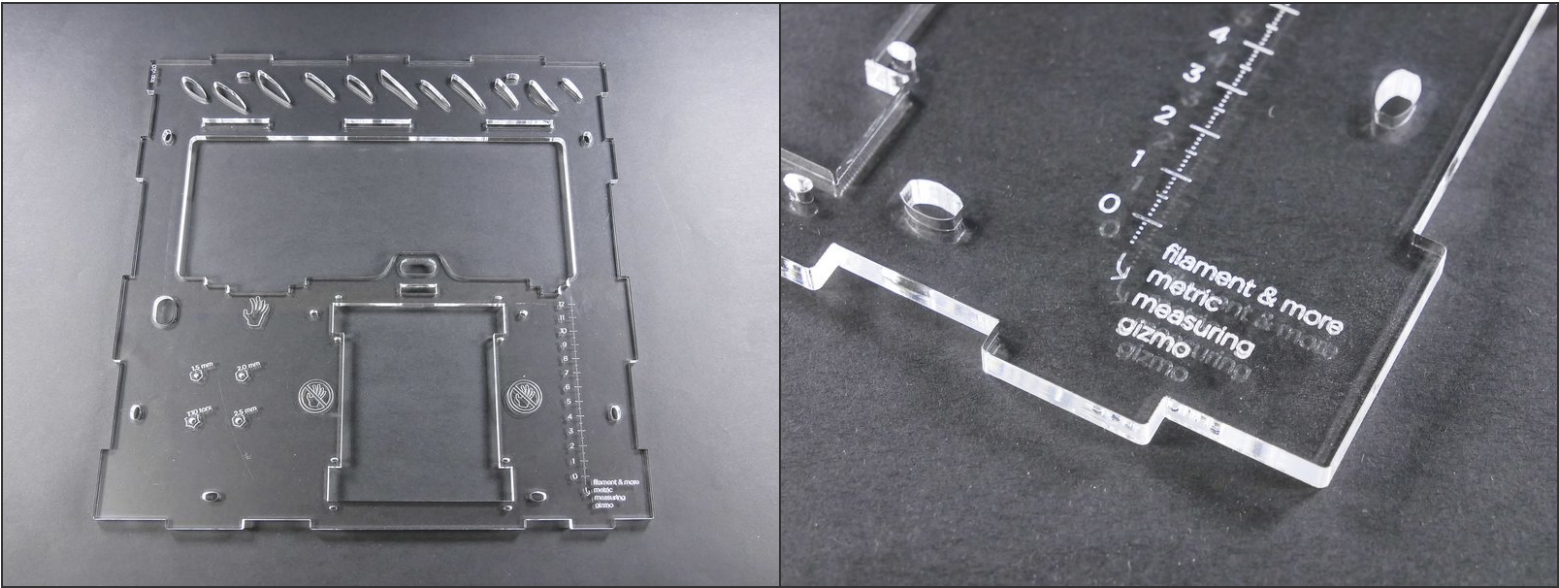


04. Top

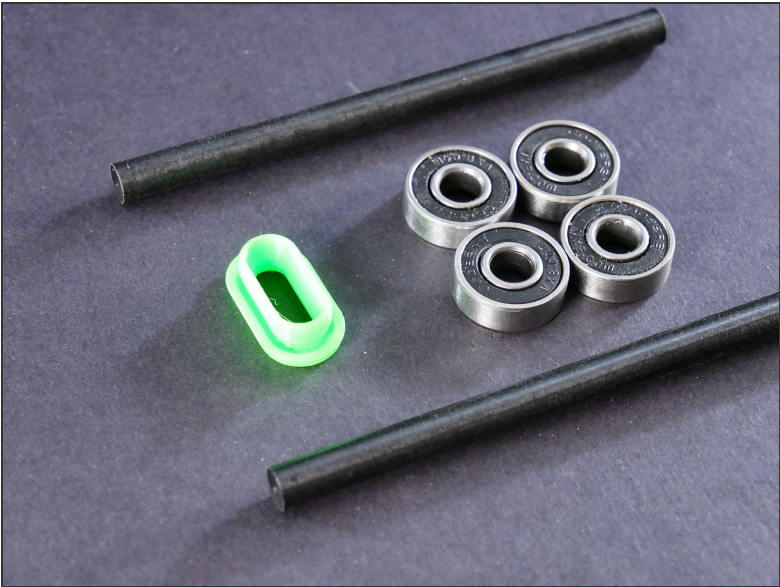
Top of the frame



Step 1 — ↳ Prepare the Top



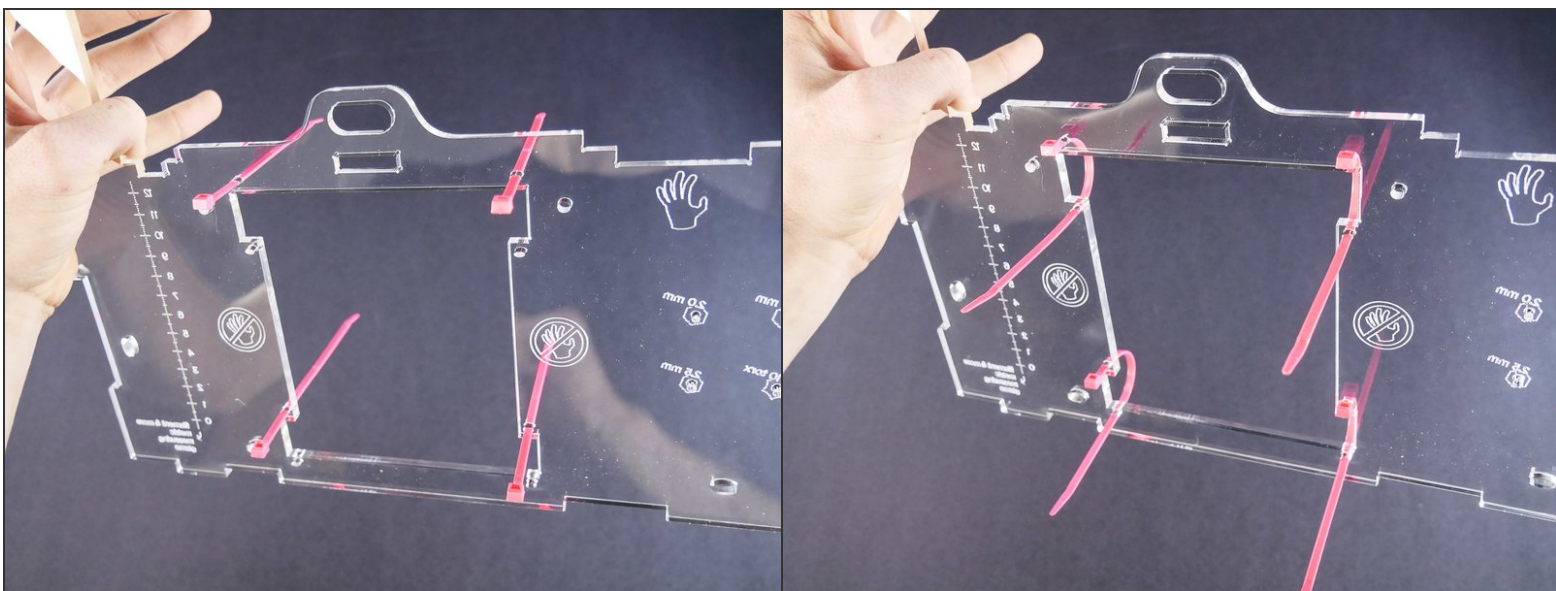
Step 2



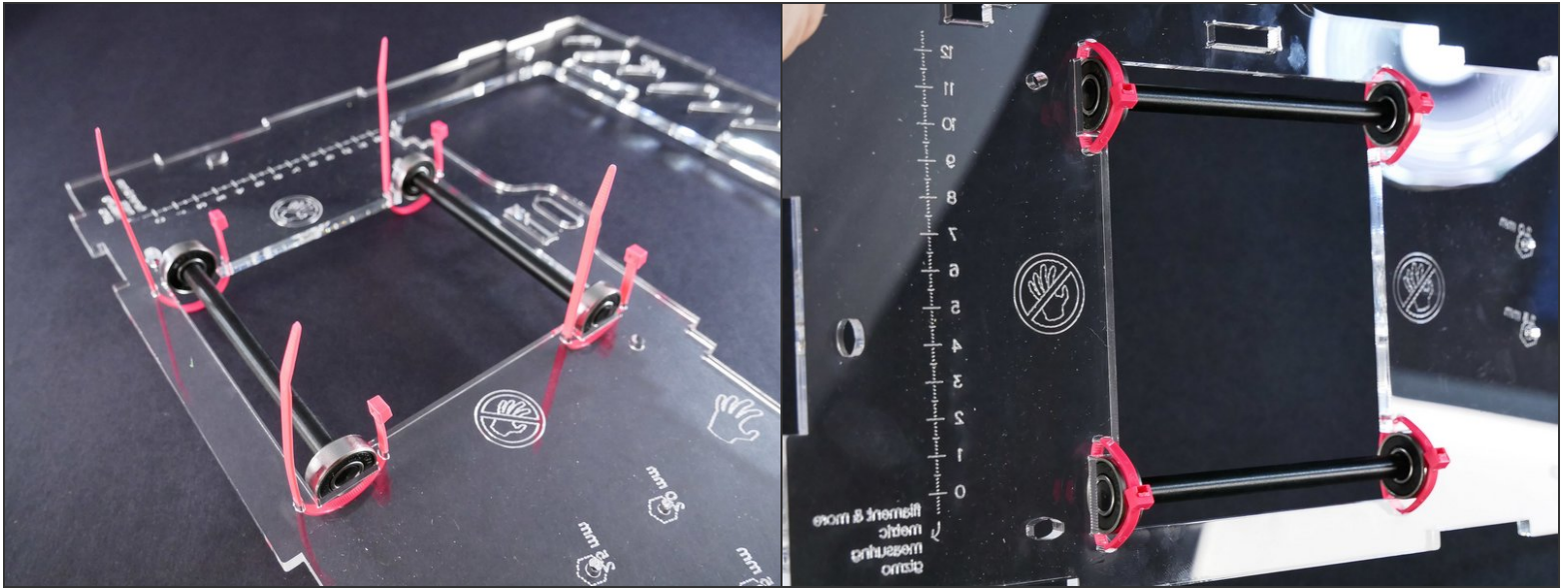
Step 3



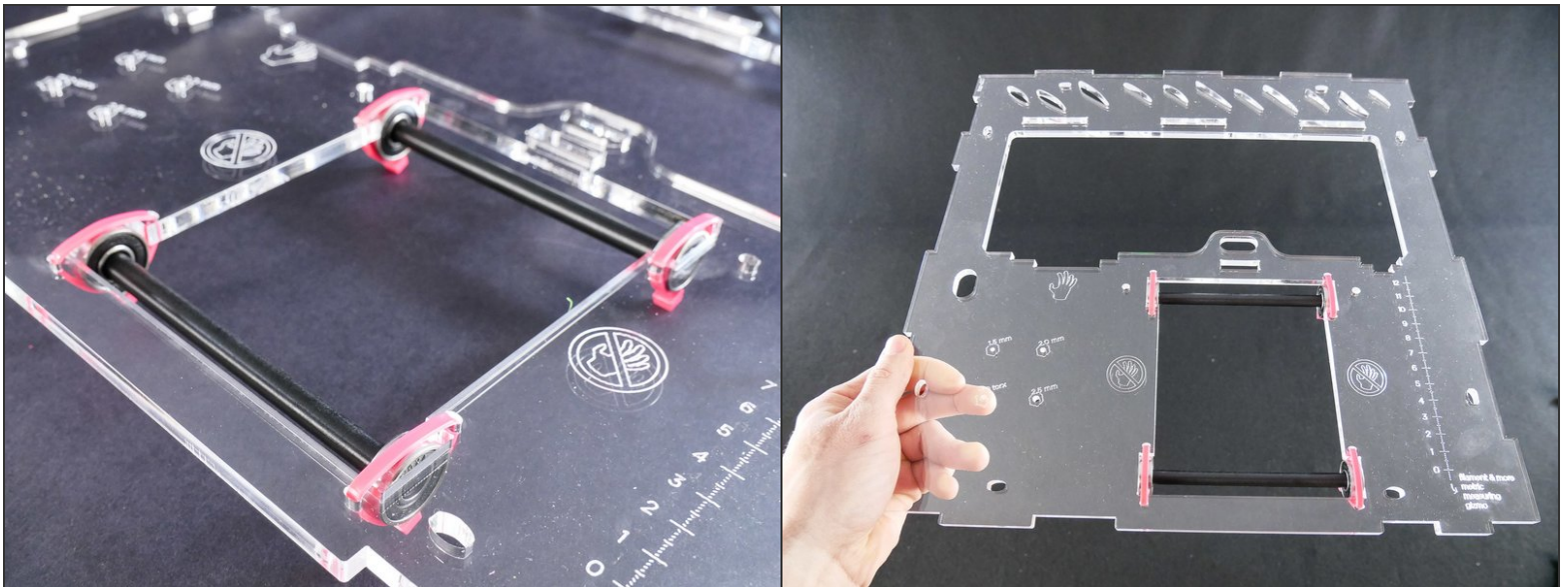
Step 4



Step 5



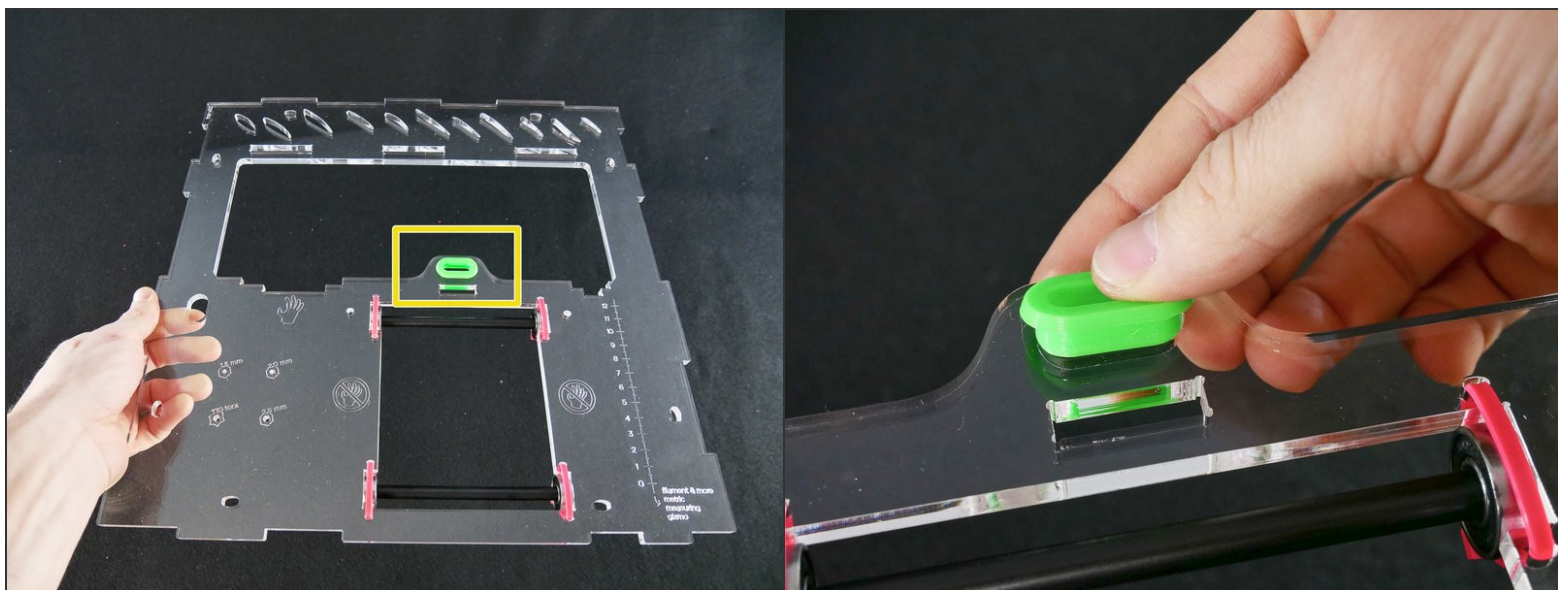
Step 6



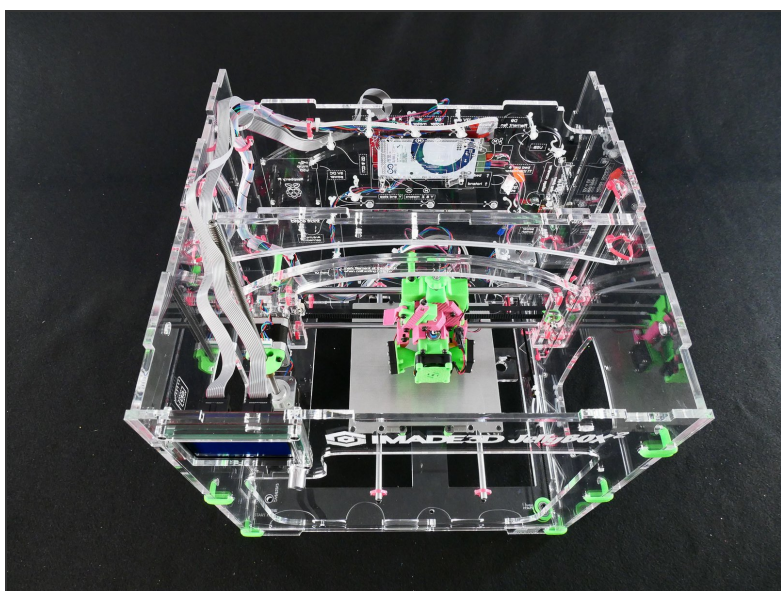
- Turn 180° once more. This is the *normal* orientation (you can read the etchings).

☑ Note that the spool rollers are **hanging underneath** the Top part.

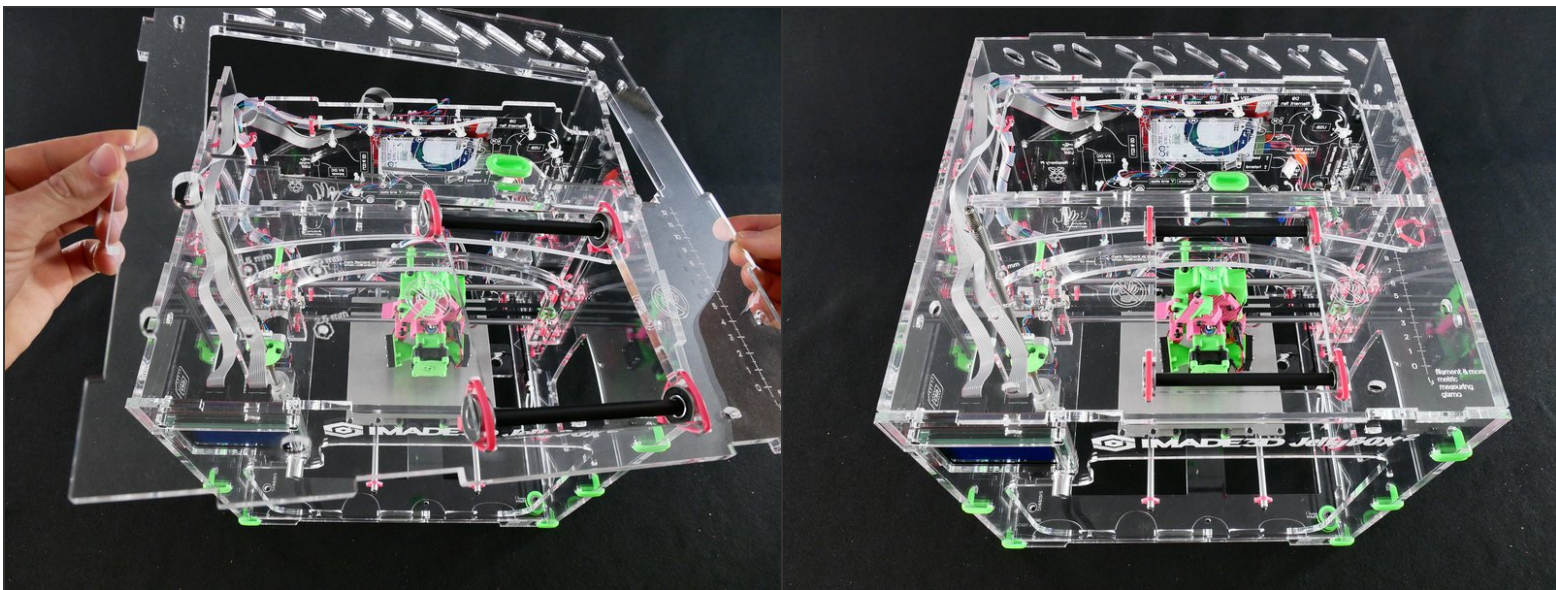
Step 7



Step 8 — ↳ Install the Top



Step 9



Step 10

