

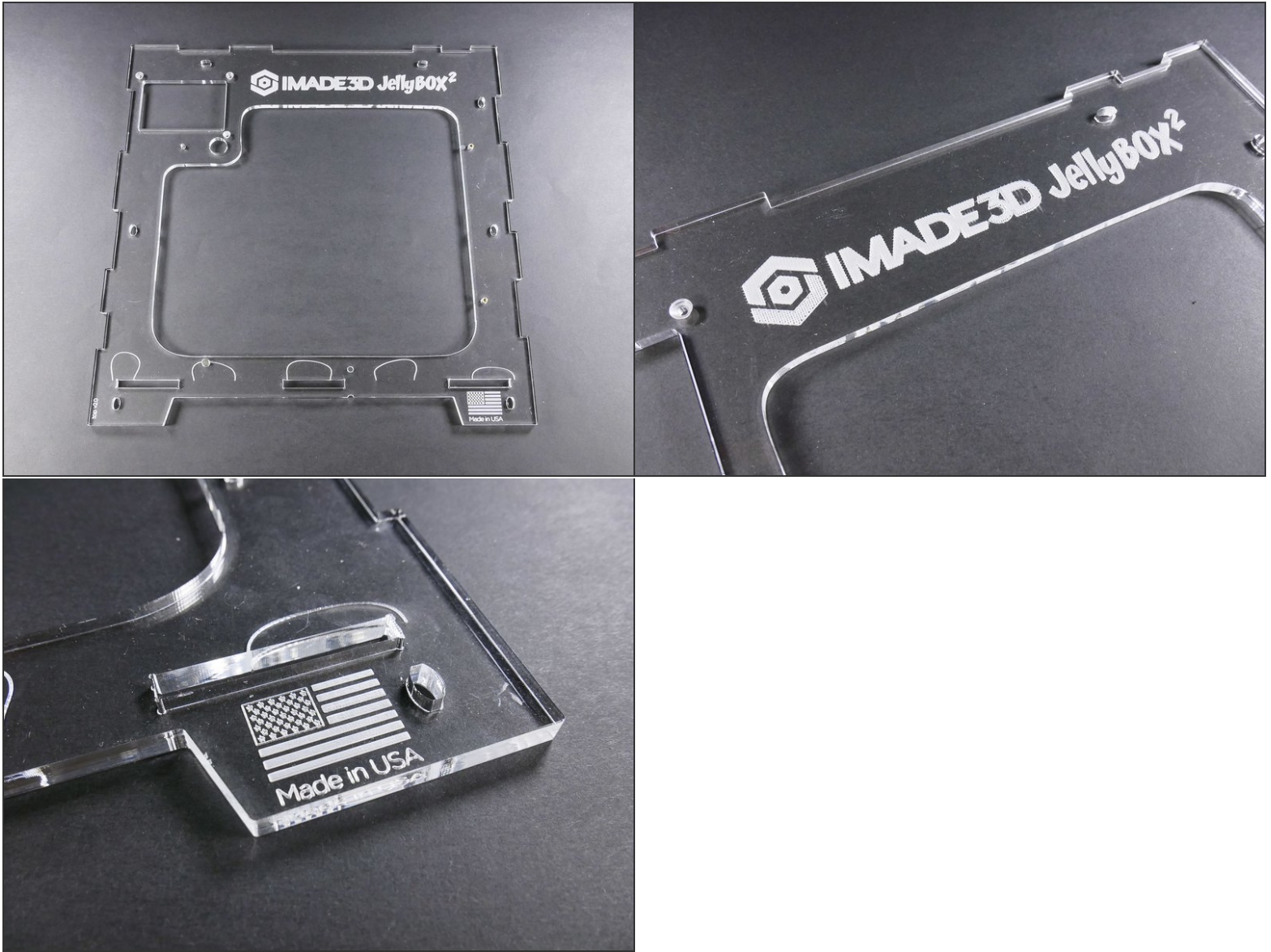


## 03. Front

Front of the frame



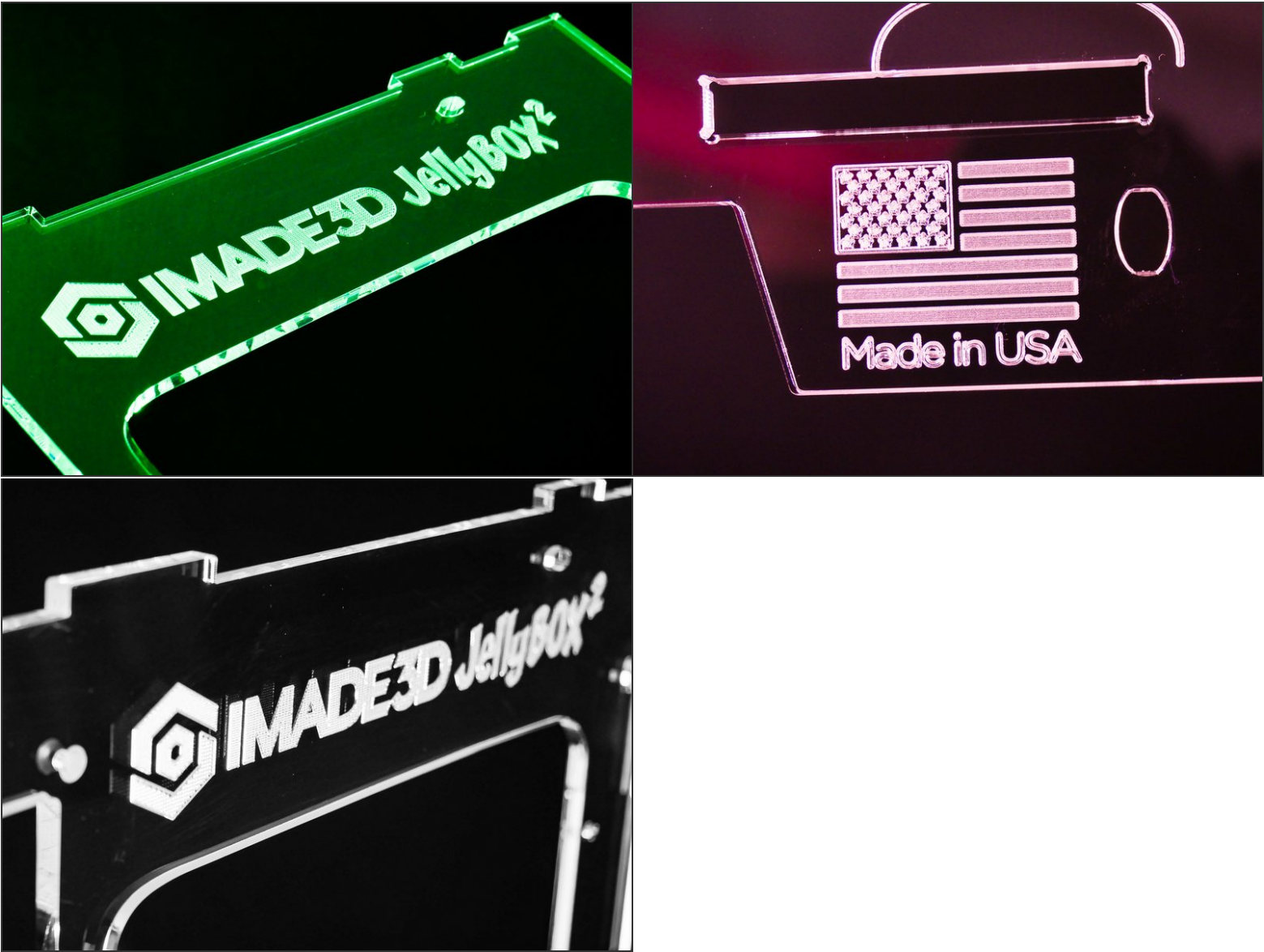
## Step 1 — ↳ Prepare the Front



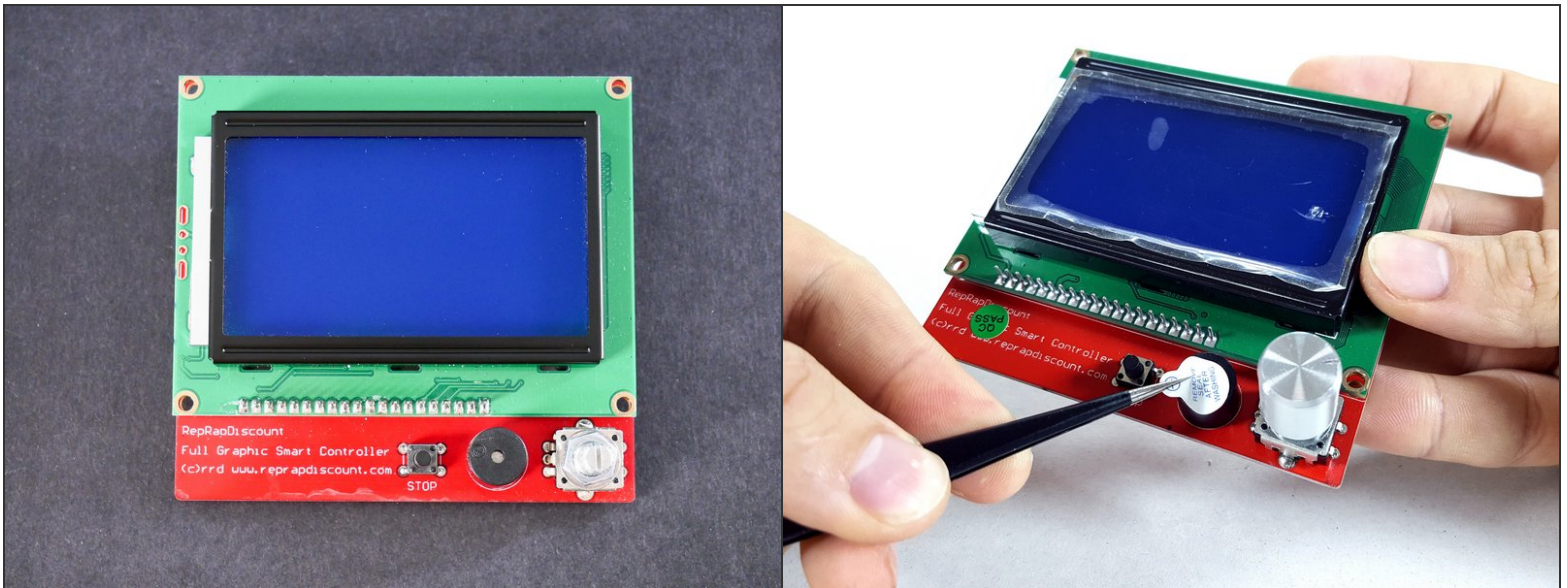
- Insert wisdom here.



Step 2

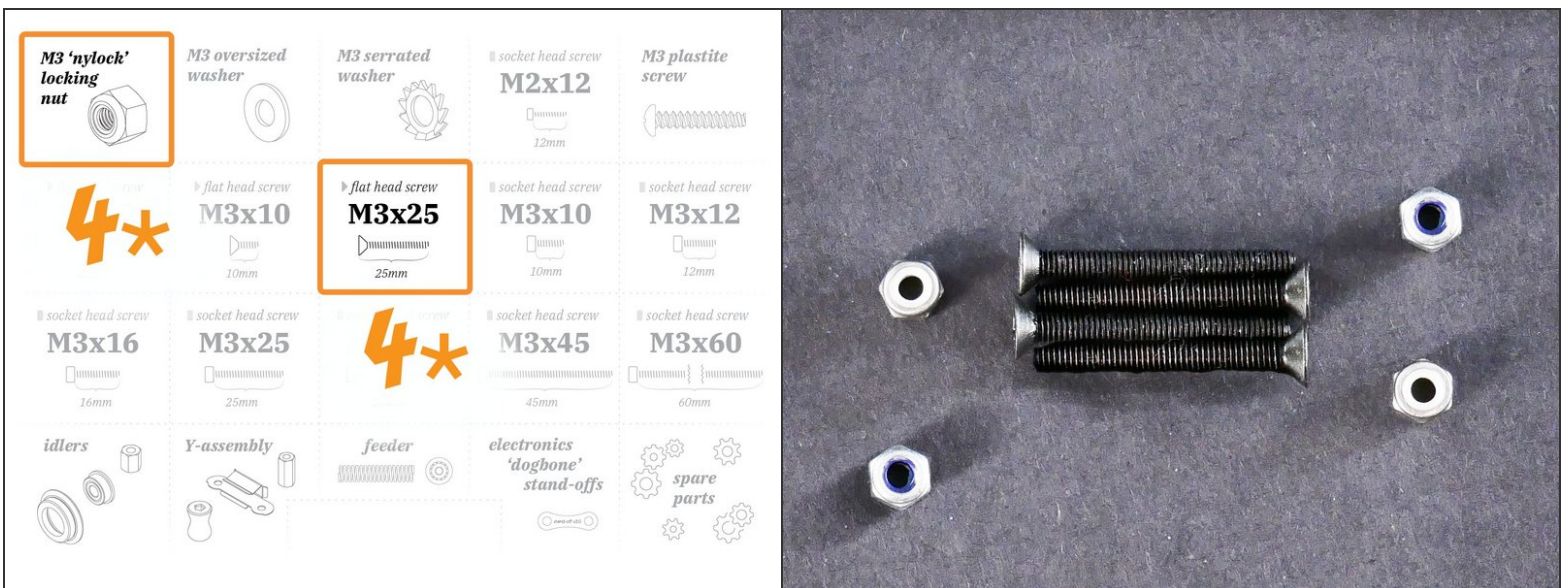


## Step 3



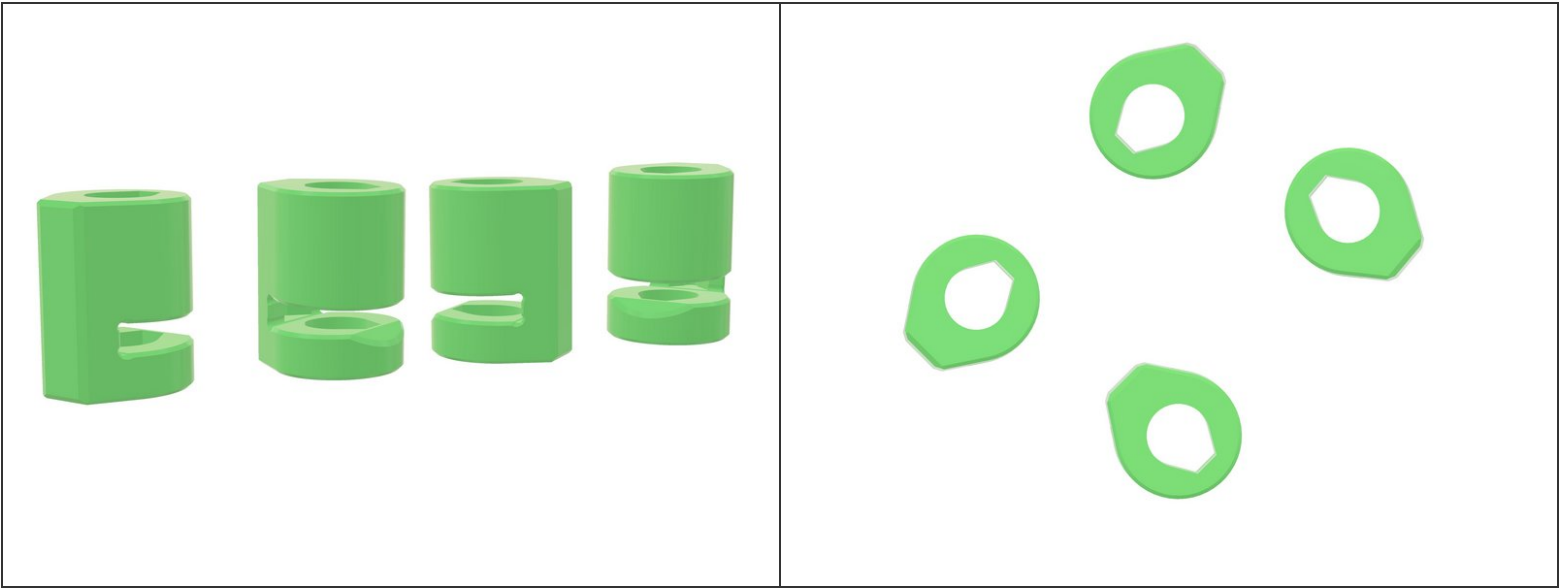
- If there's a sticker on your LCD, you are encouraged to remove it for aesthetic reasons.

## Step 4



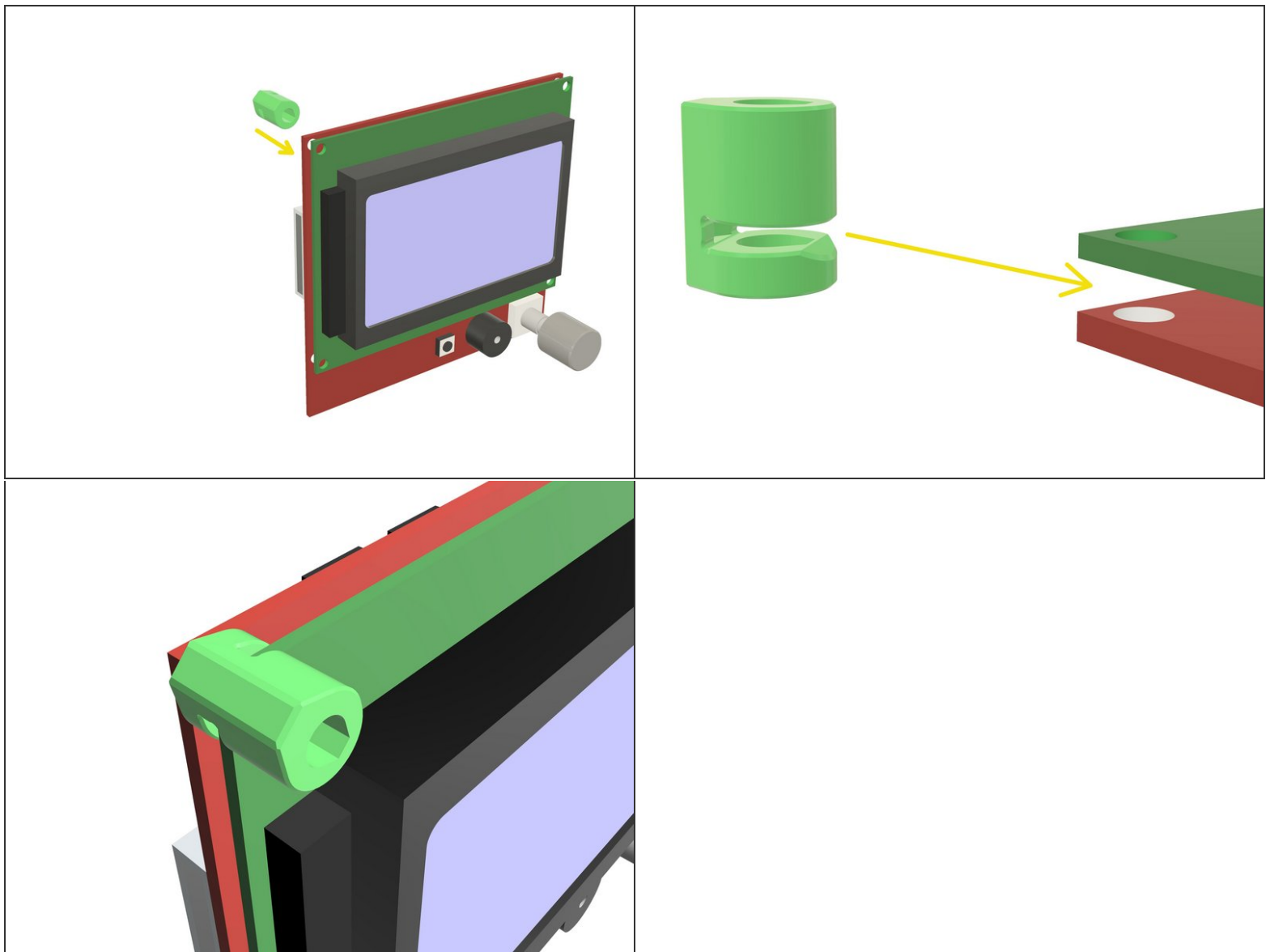
- M3x25 flat head (4x)
- M3 locknut (4x)

Step 5



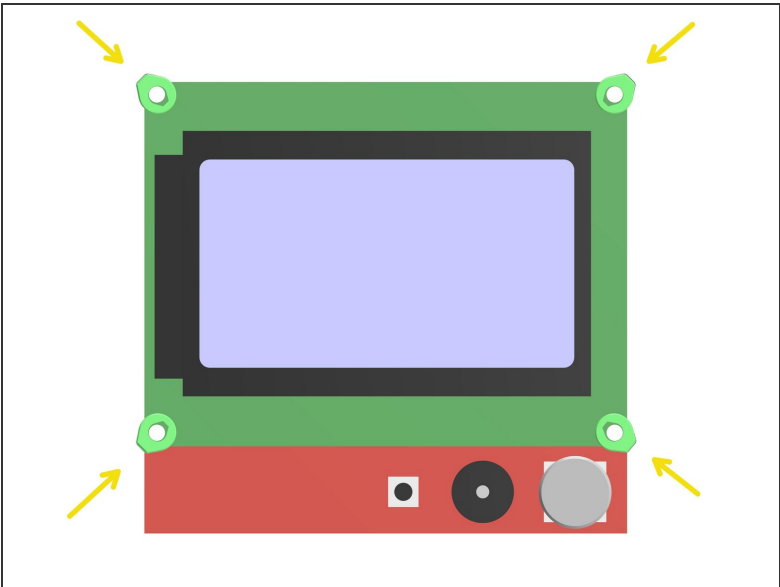
- LCD spacer (4x)

Step 6

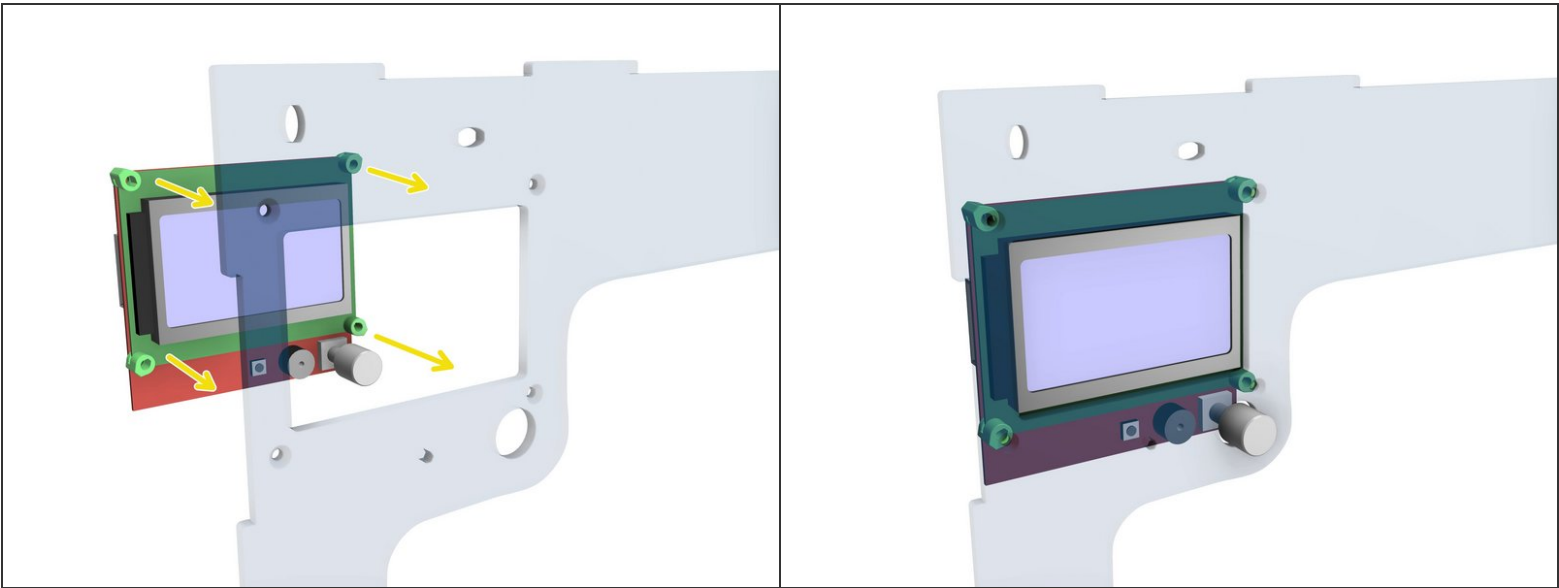




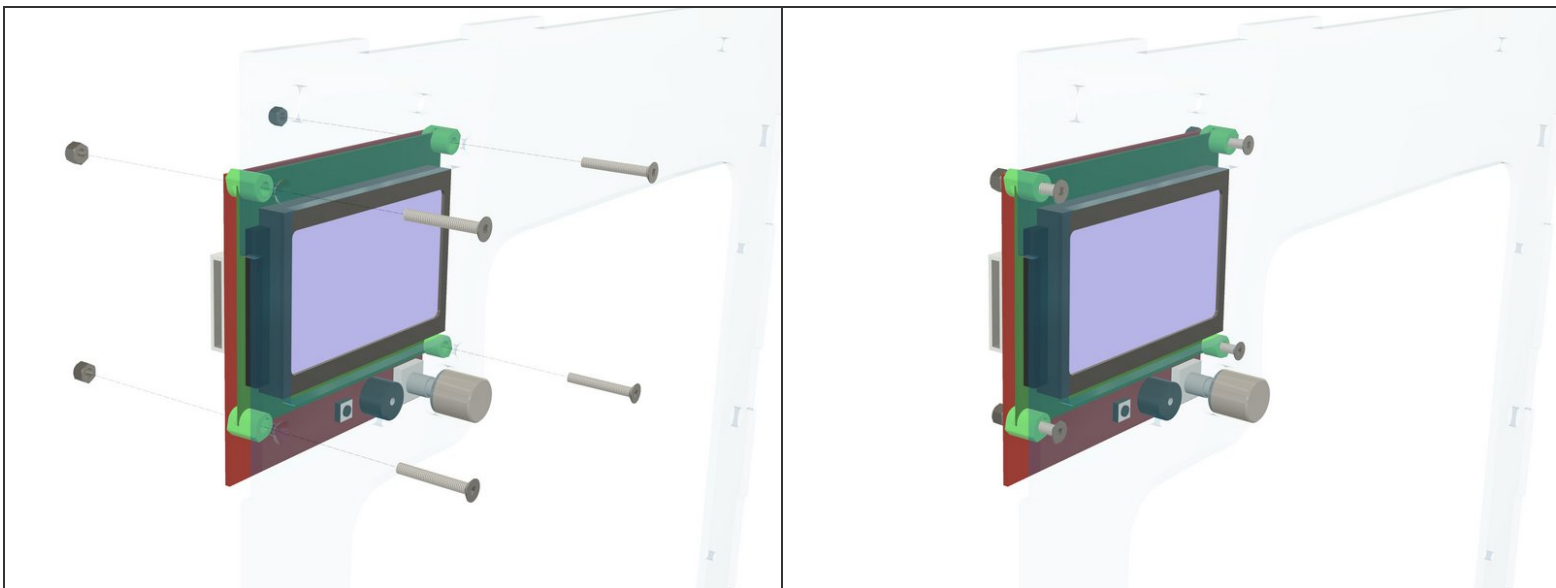
Step 7



Step 8

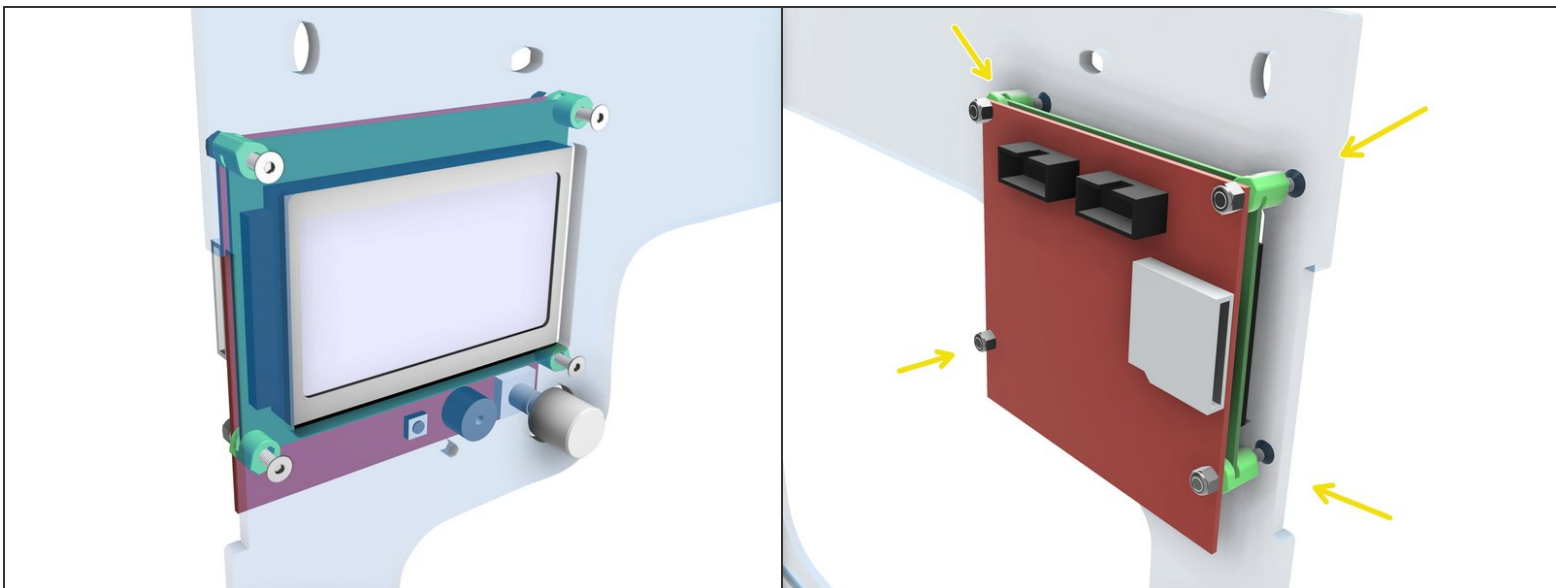


## Step 9



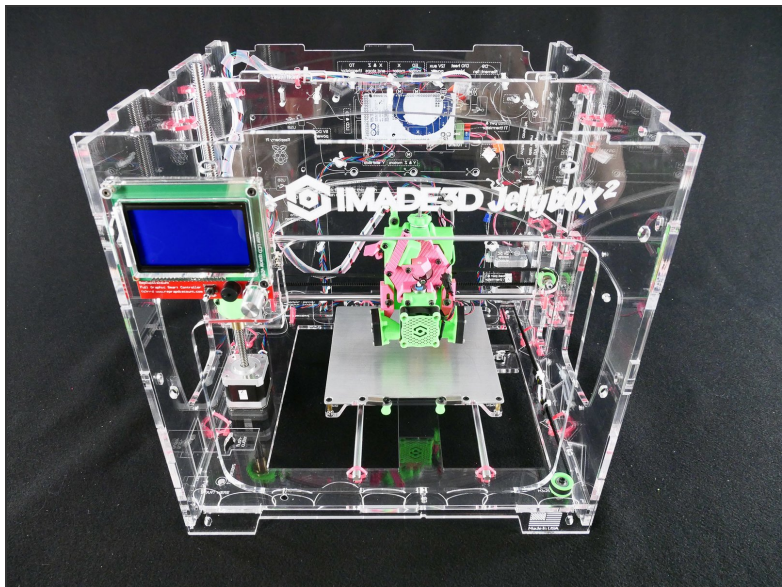
 Do NOT over-tighten.

## Step 10 — Looking good!

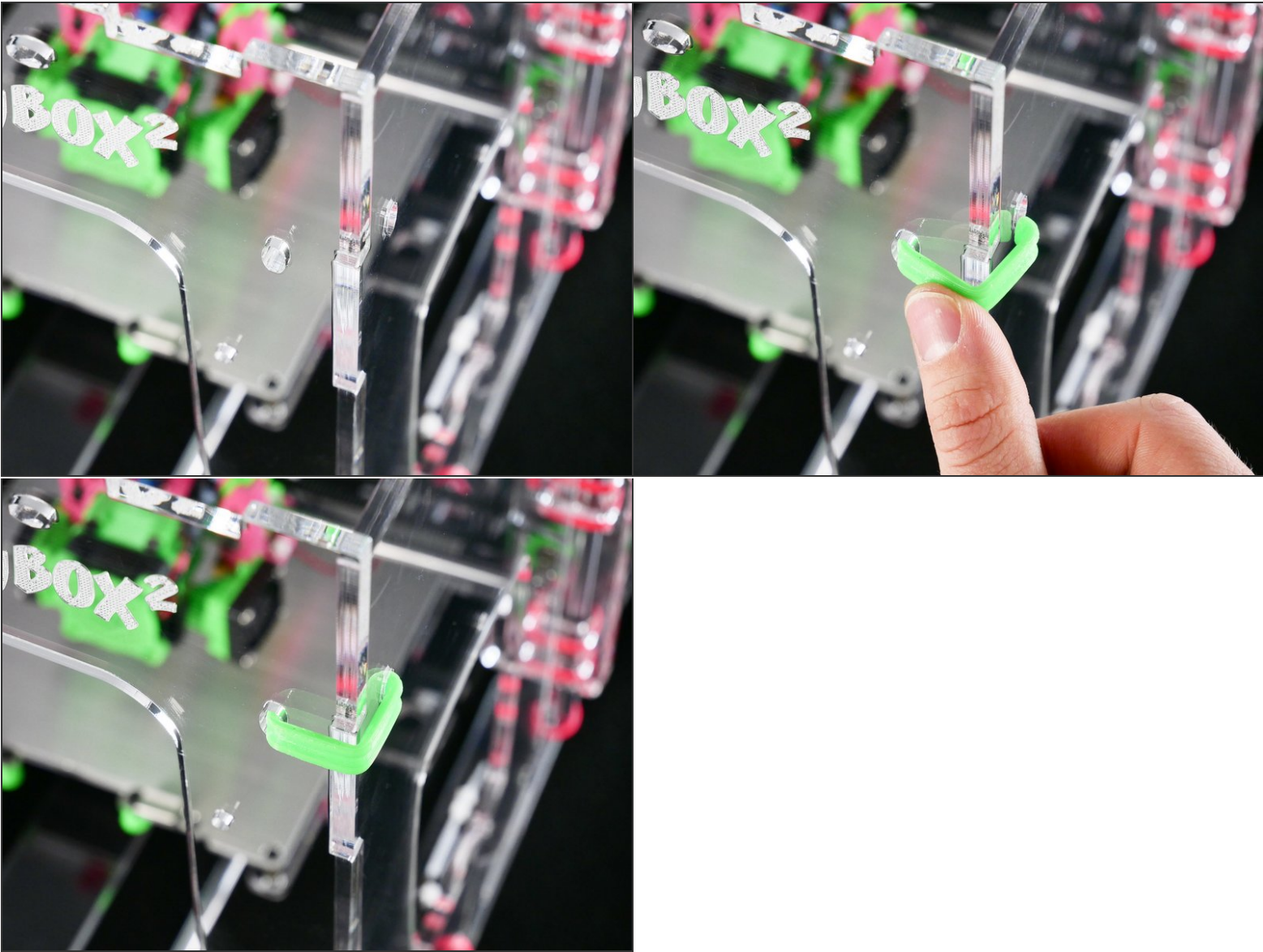




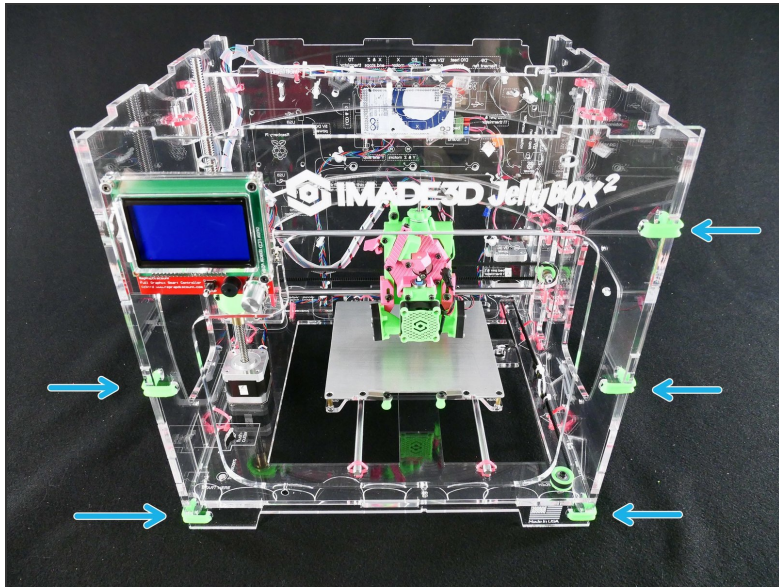
## Step 11 — ↪ Install the Front



Step 12

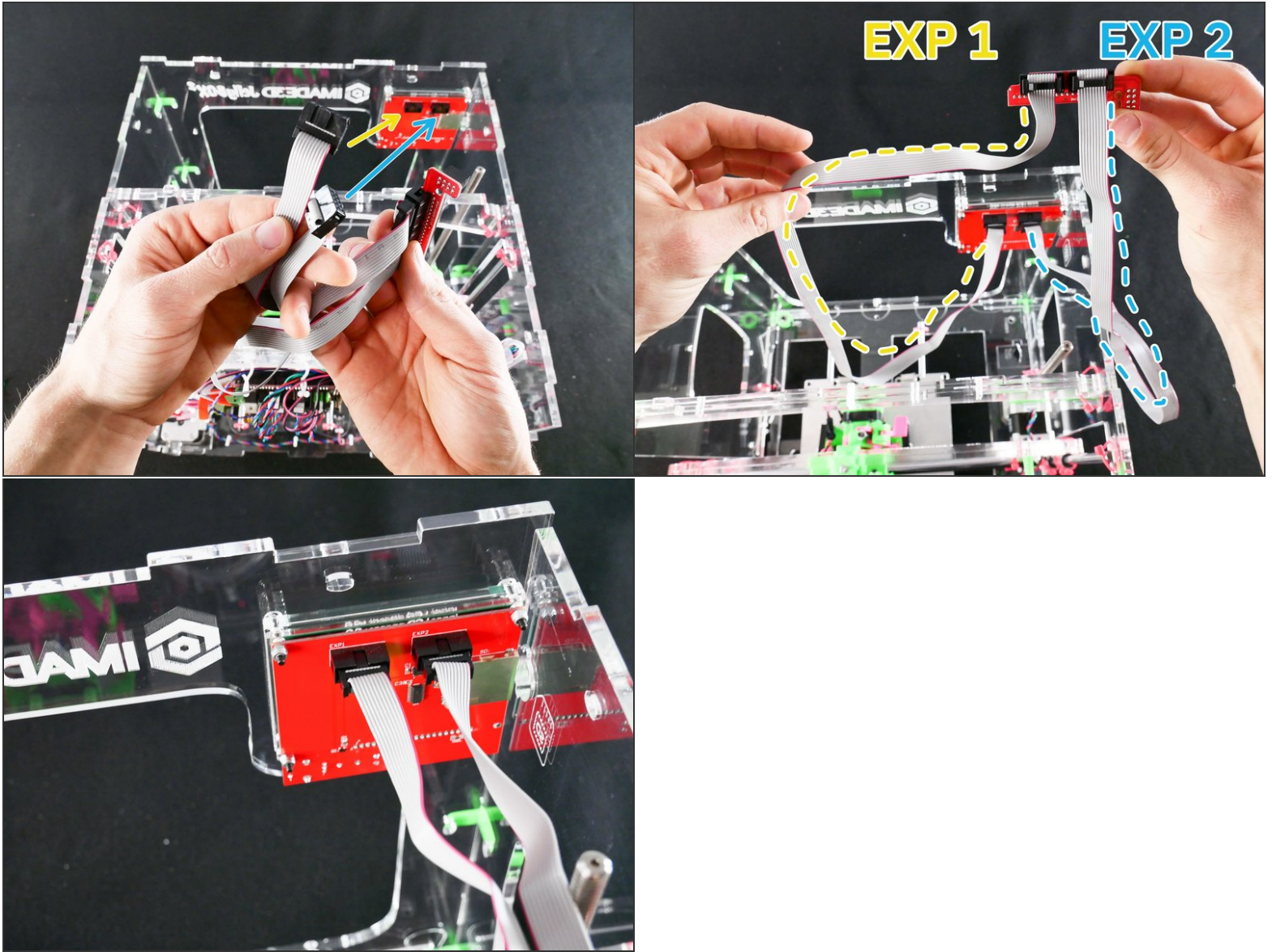


## Step 13





## Step 14



- You need to match the connectors as shown, or the LCD will not work.
- There are a bit hard to read 'EXP1' and 'EXP2' markings around the connectors.
- ☑ If you mis-match the connectors, nothing bad happens! The LCD will not light up, but it will not get damaged. You can always just swap the connectors later when we test the whole printer.



Step 15

