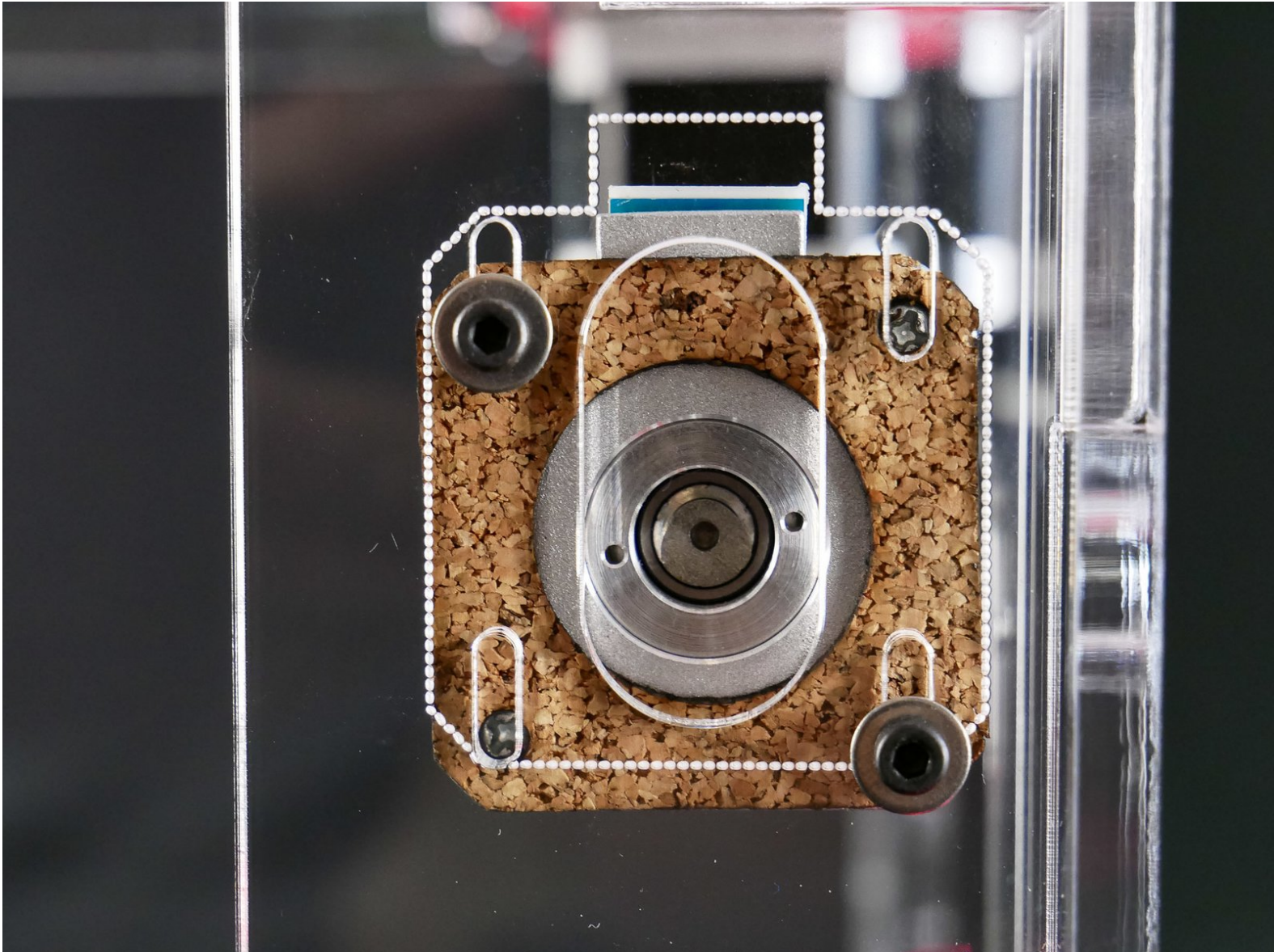




# 01. Install the Z Motor

Install the Z Motor



Step 1 — ↪ Install the Z Motor



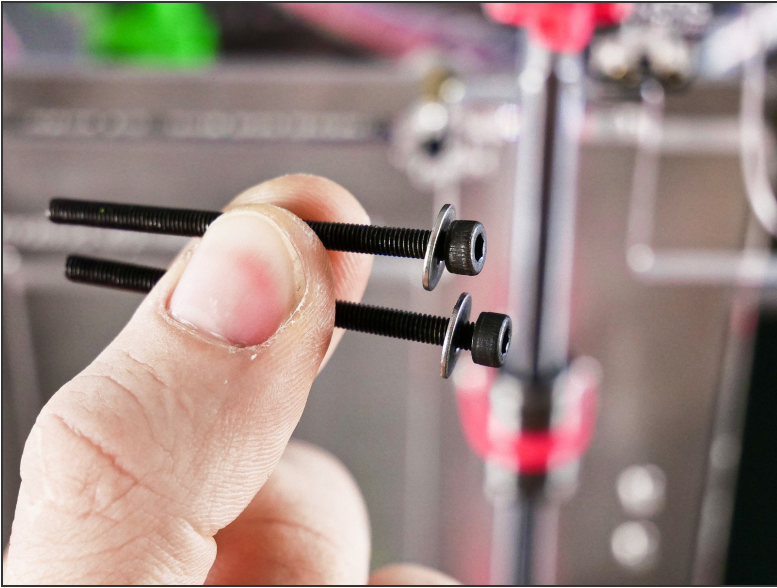
Step 2



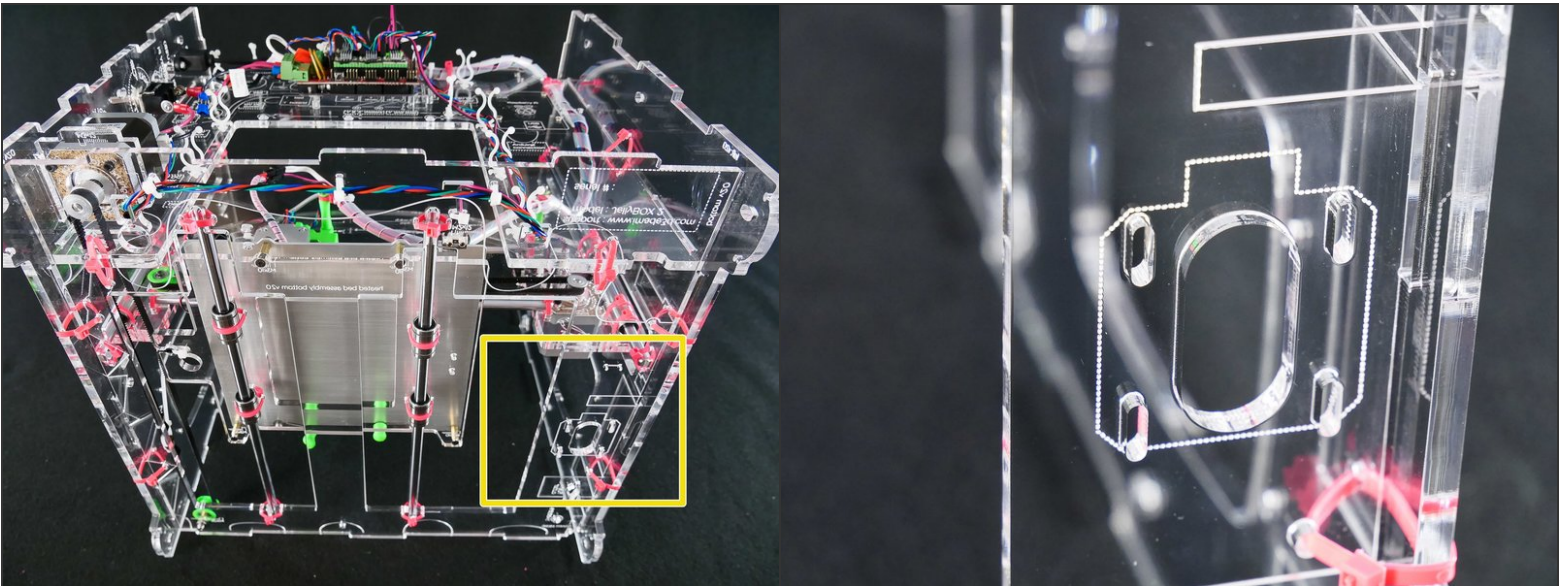
- M3x45



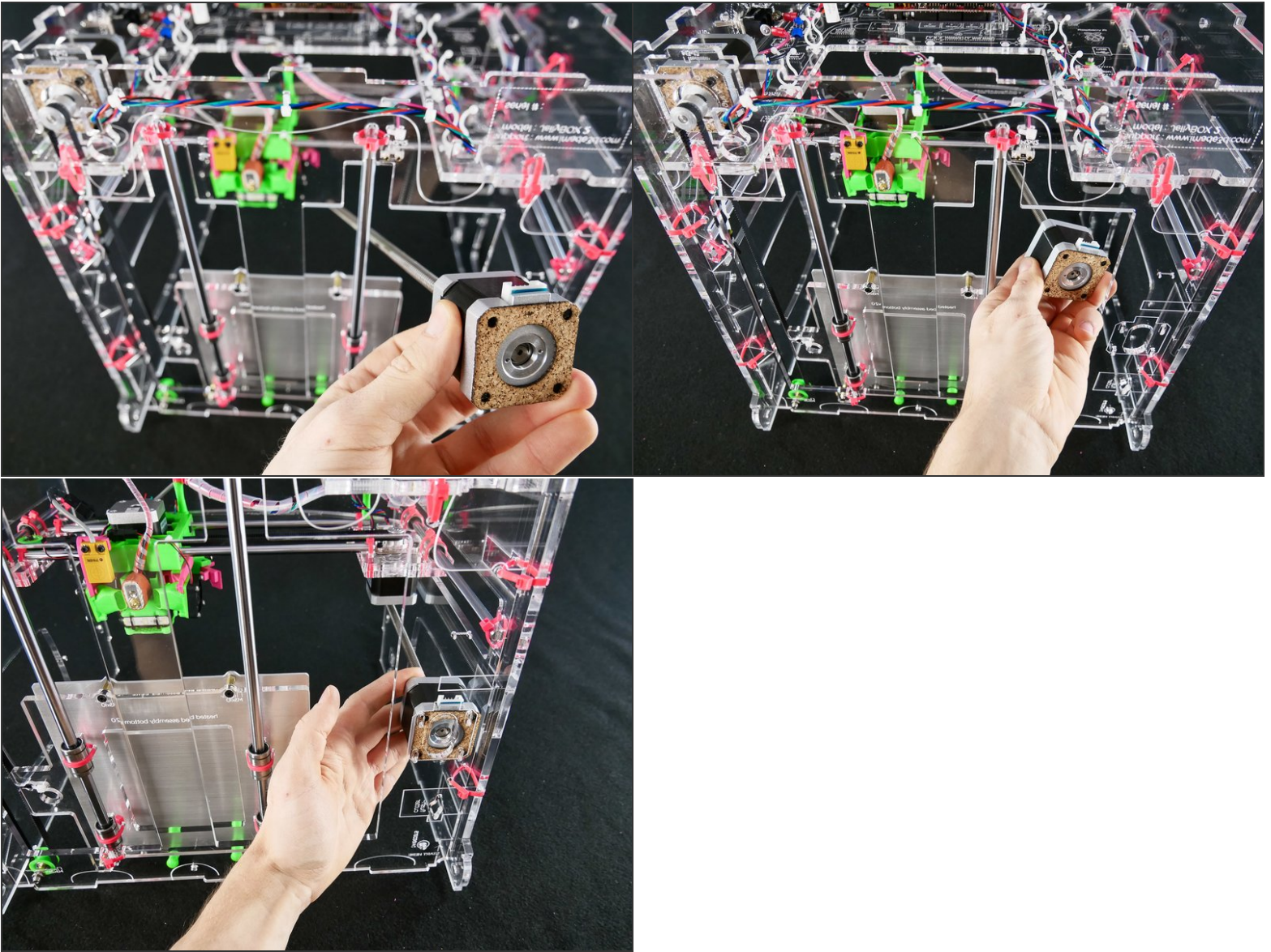
### Step 3



### Step 4

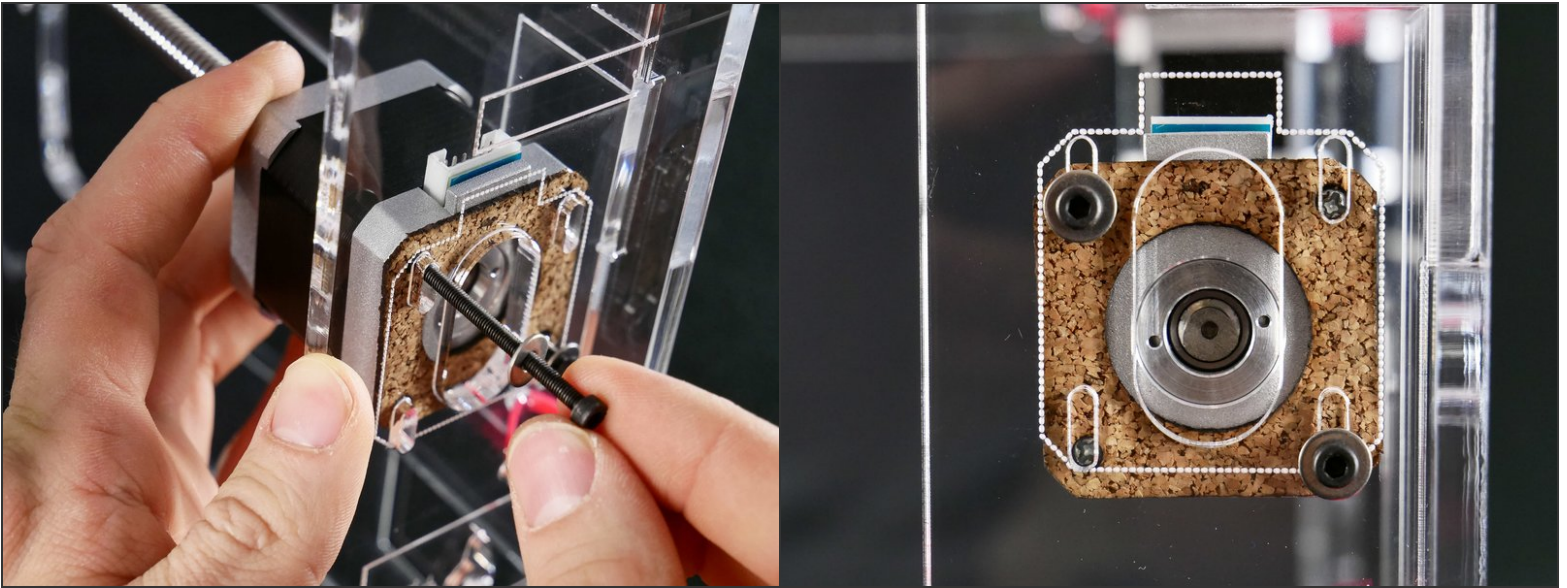


## Step 5



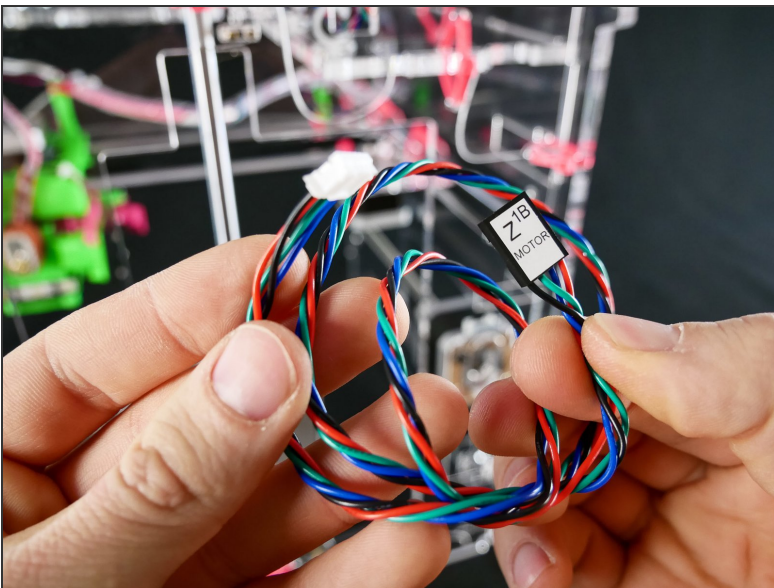


## Step 6

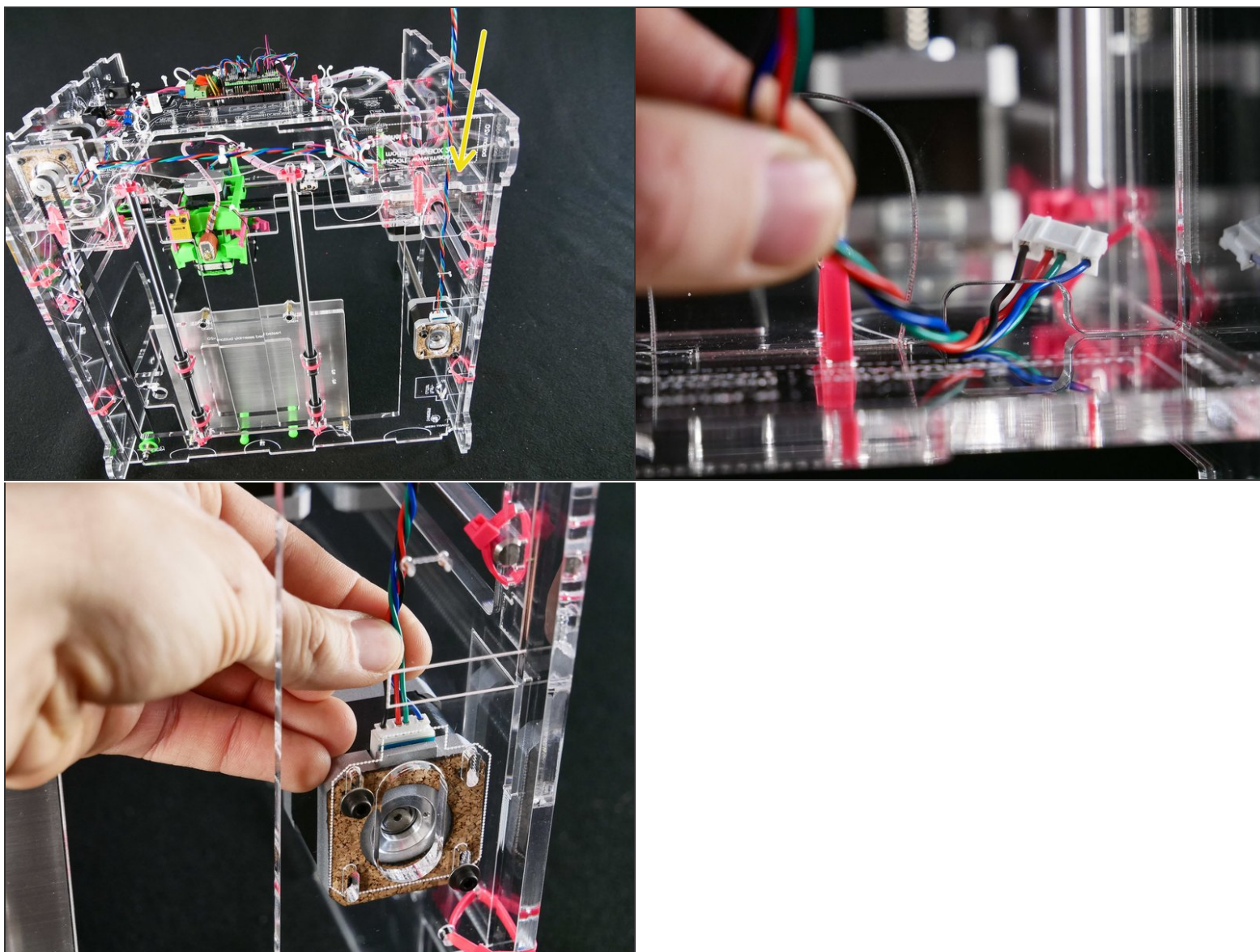


- Keep the screws a bit *loose*. We'll adjust the Z motor position later.

## Step 7



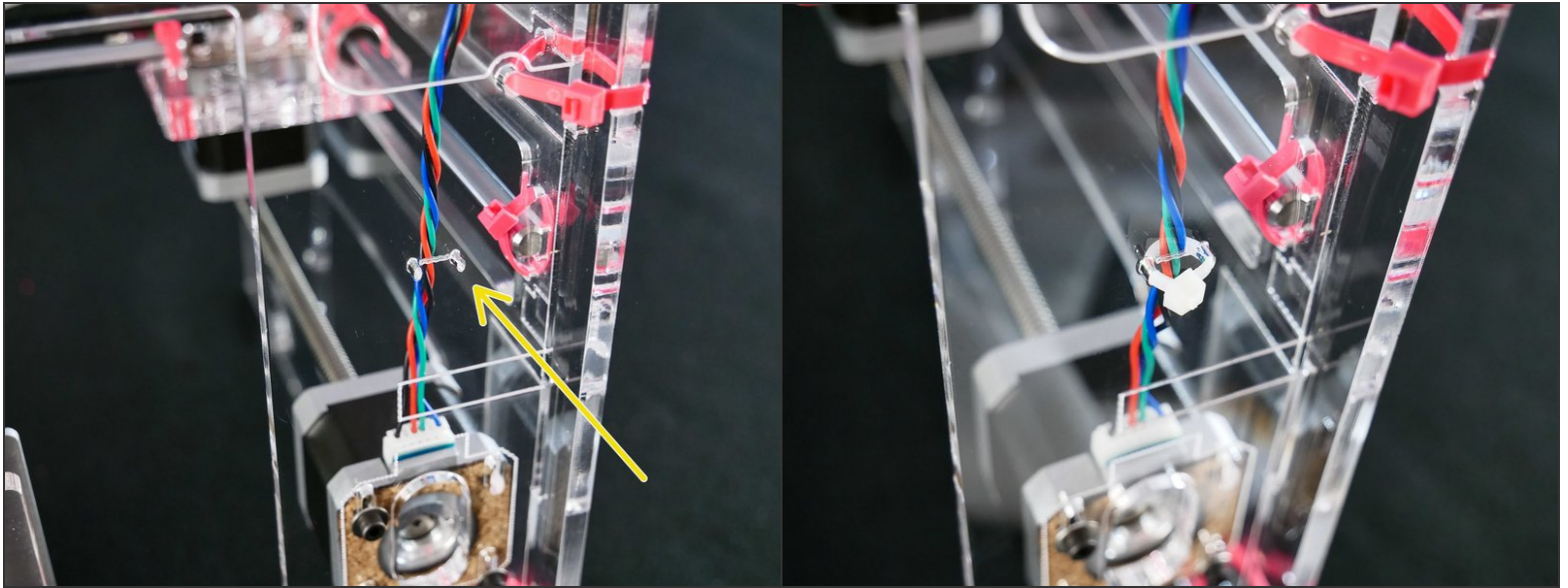
## Step 8



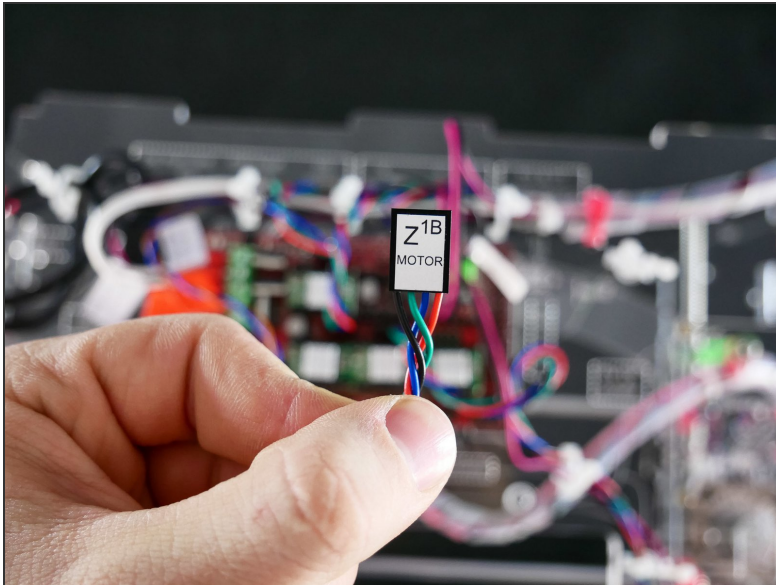
- [docs improvement] chose a better angle for photo #2



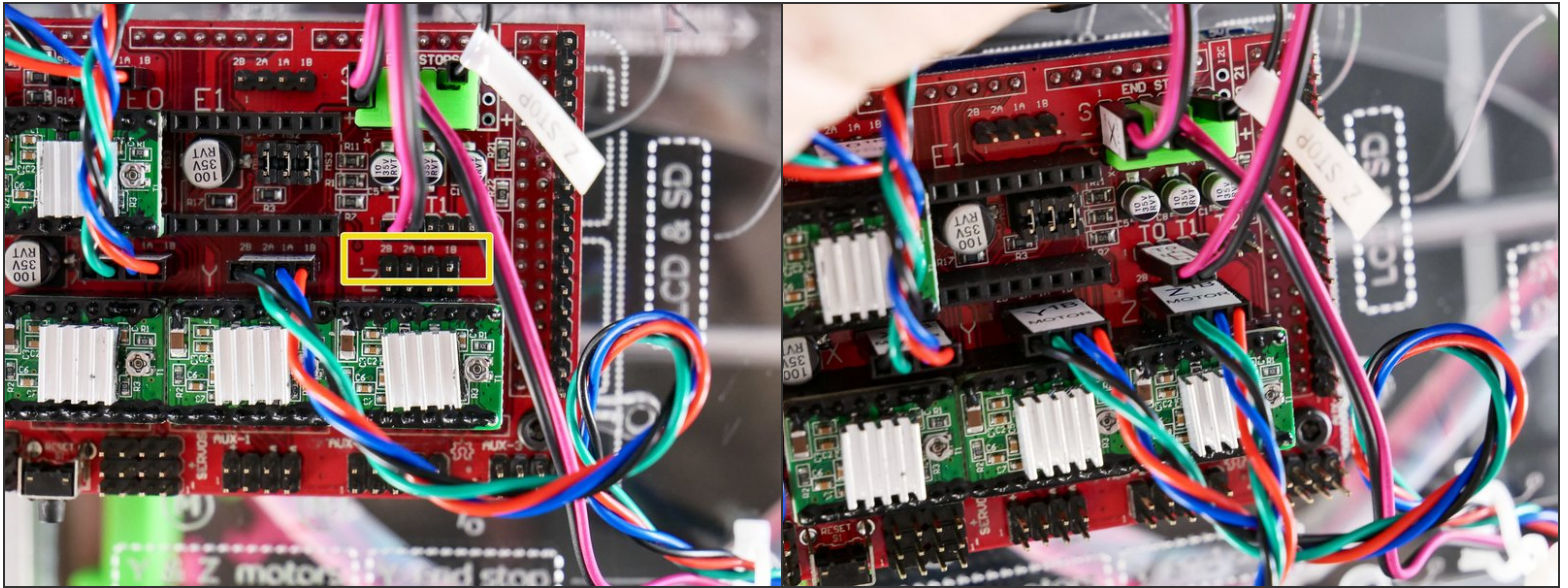
## Step 9



## Step 10



## Step 11





## Step 12 — It's done!

