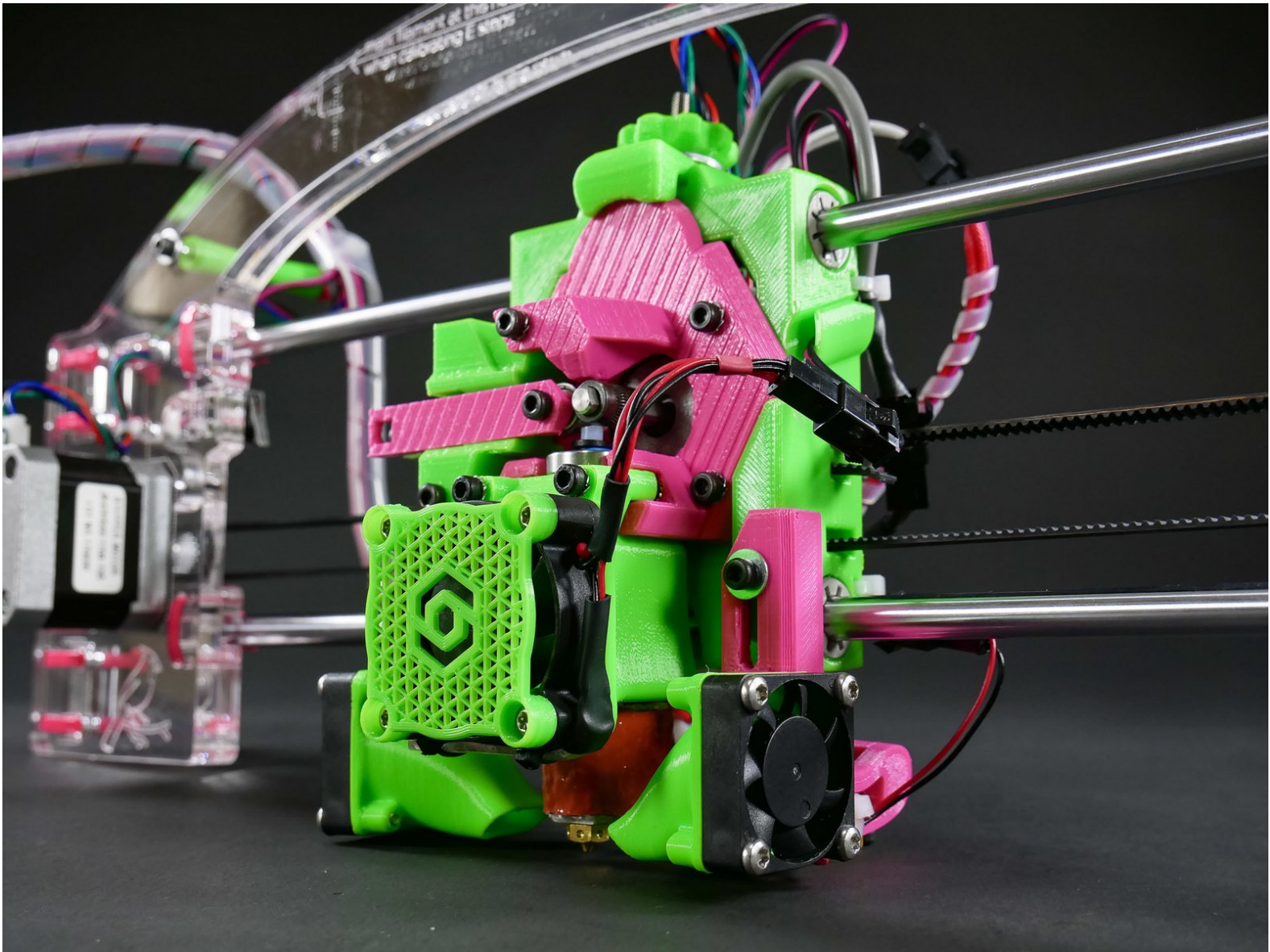
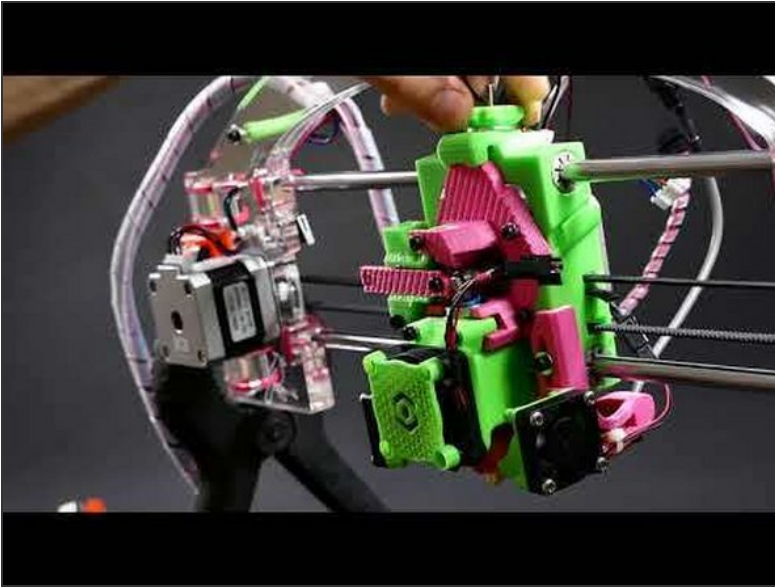




05. Insert and Connect the Extruder

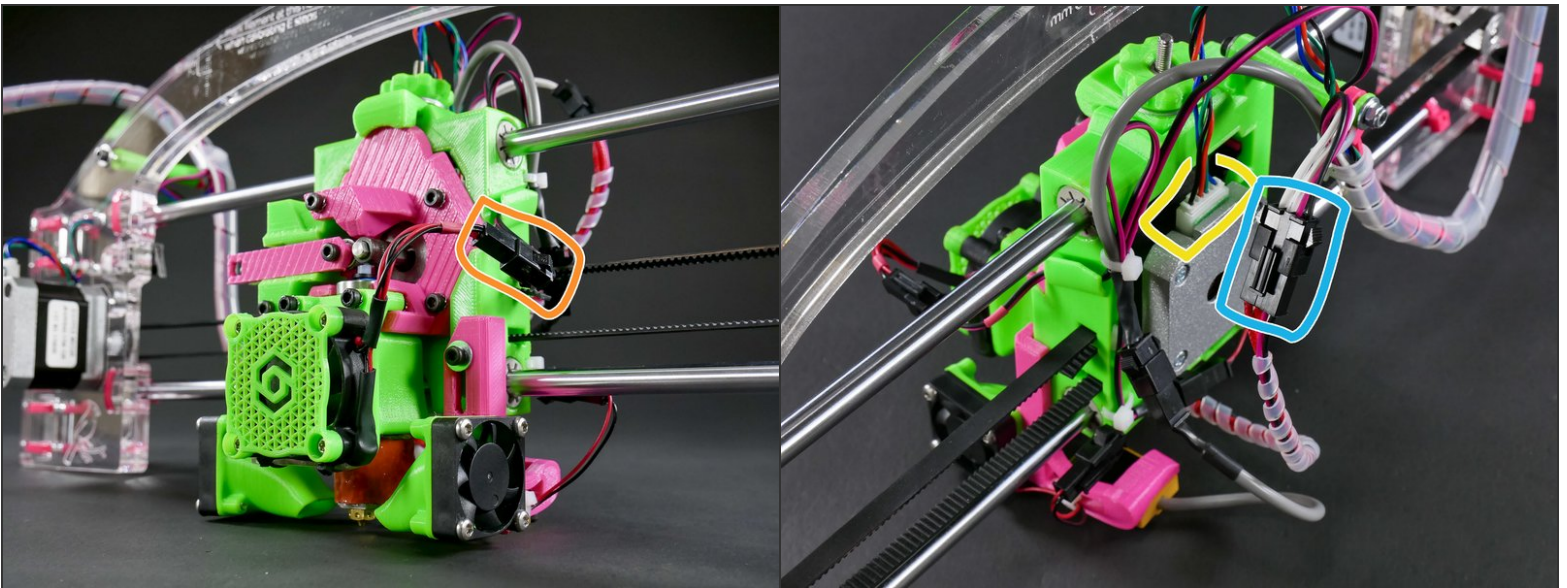


Step 1 — ► Video: Insert the Extruder (mid-build)



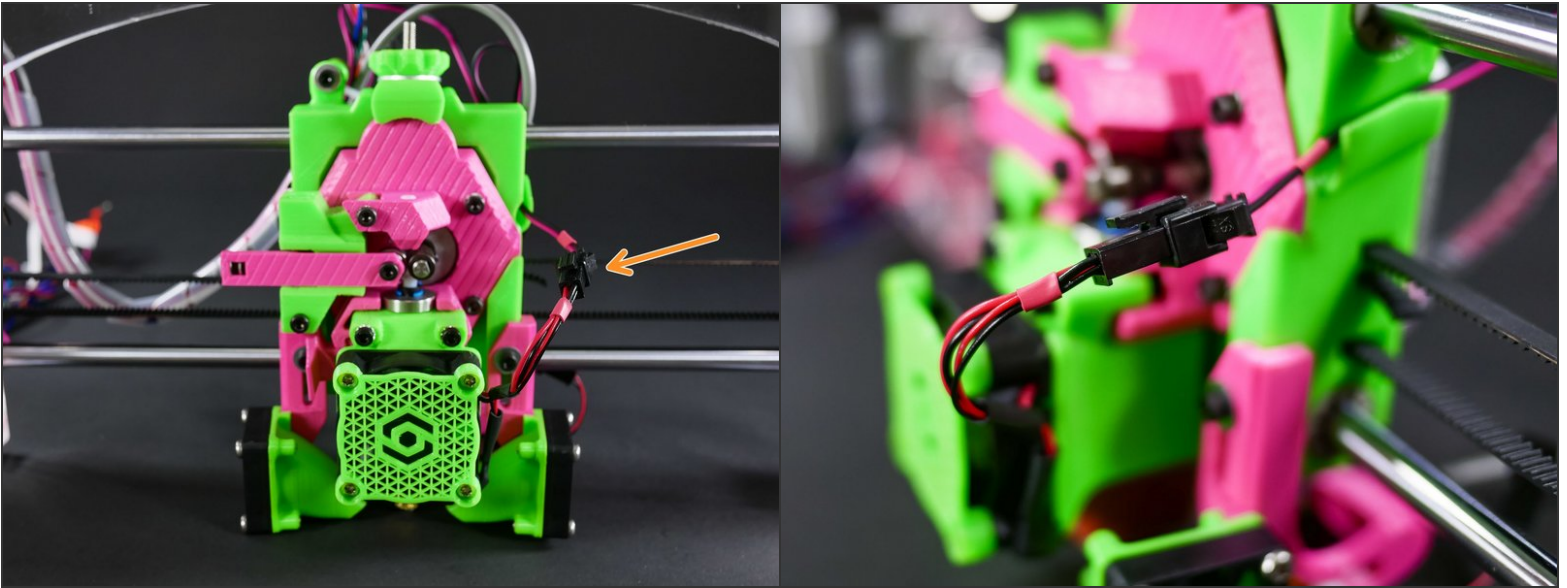
- ► Video: Insert the Extruder (mid-build)
- This is a good time to learn how to insert the extruder!

Step 2 — Connect the wires

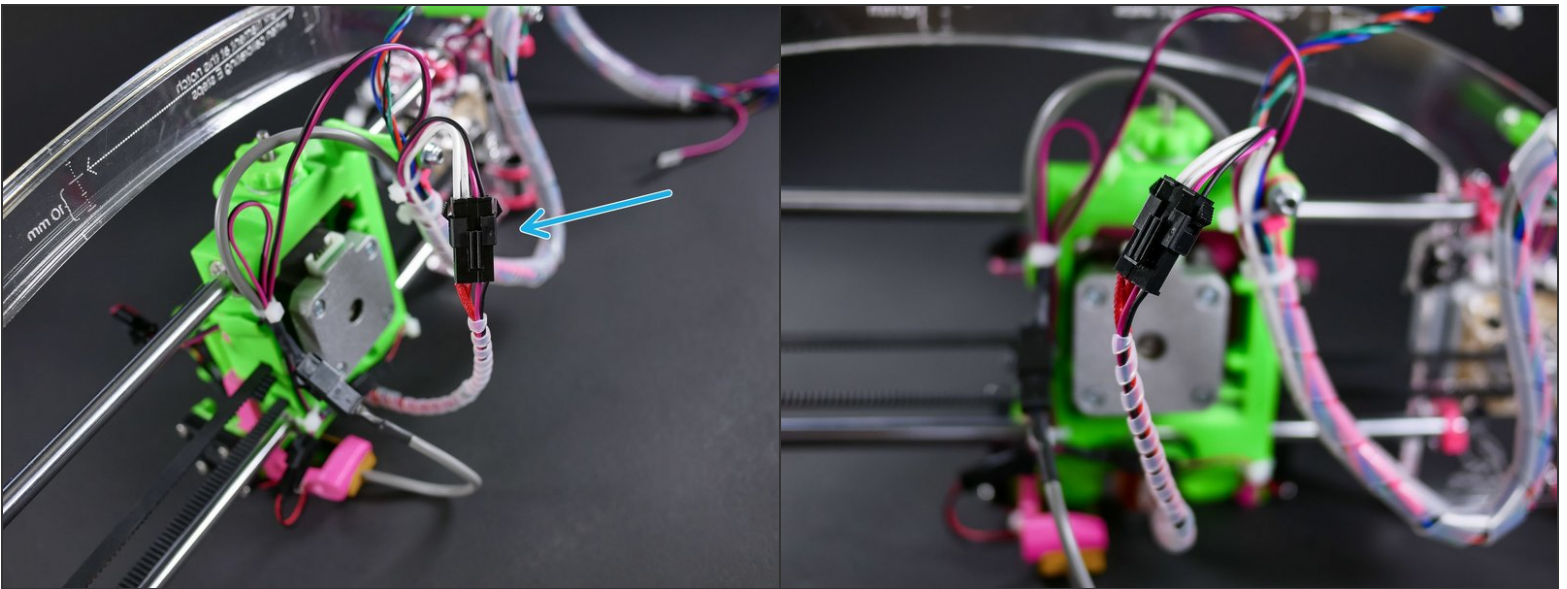


- Anytime you insert the extruder, you need to connect **3 wires**:
 - Hotend fan
 - Hotend
 - E motor

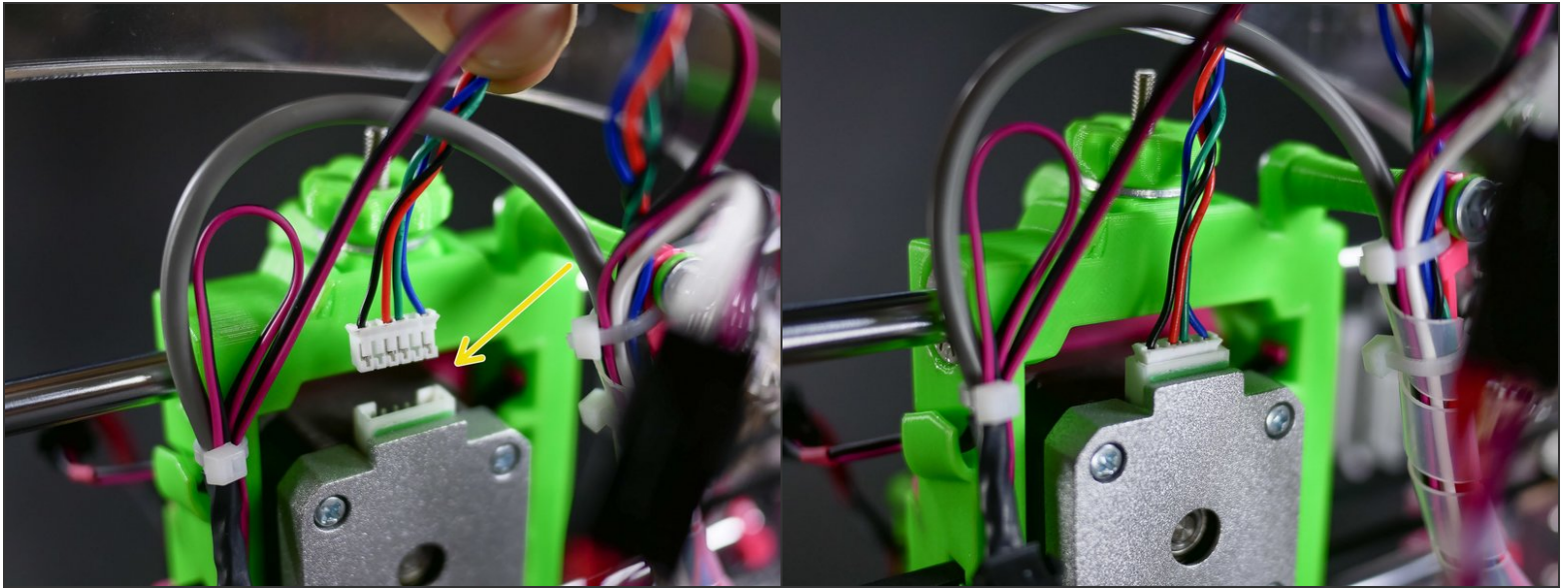
Step 3



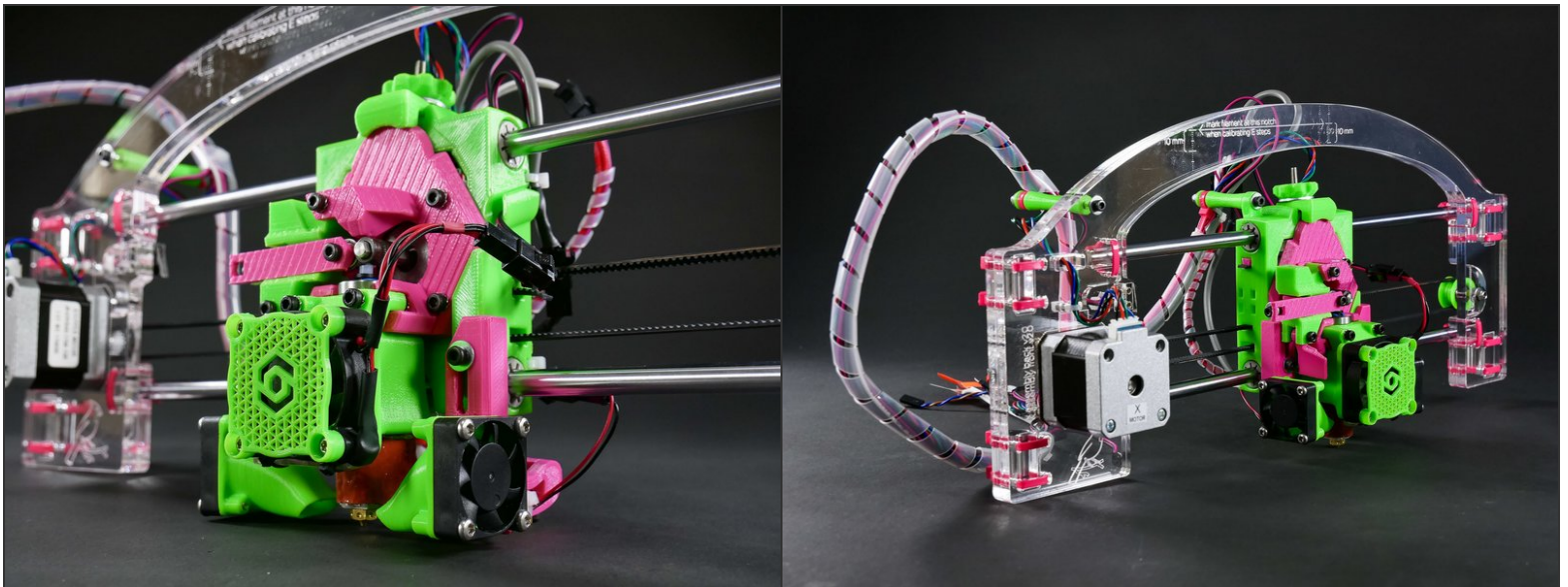
Step 4



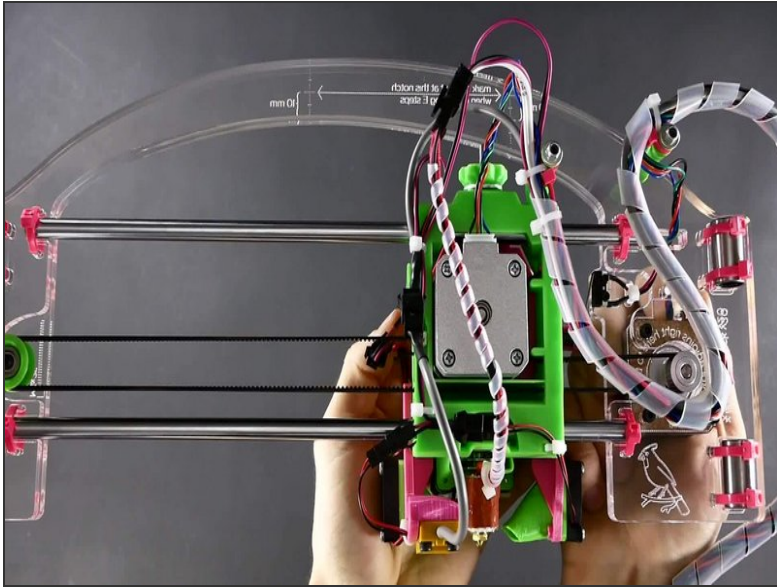
Step 5



Step 6 — Looking good!



Step 7 — ► Video: X Mechanical Checkpoint #3



- ► Video: X Mechanical Checkpoint #3