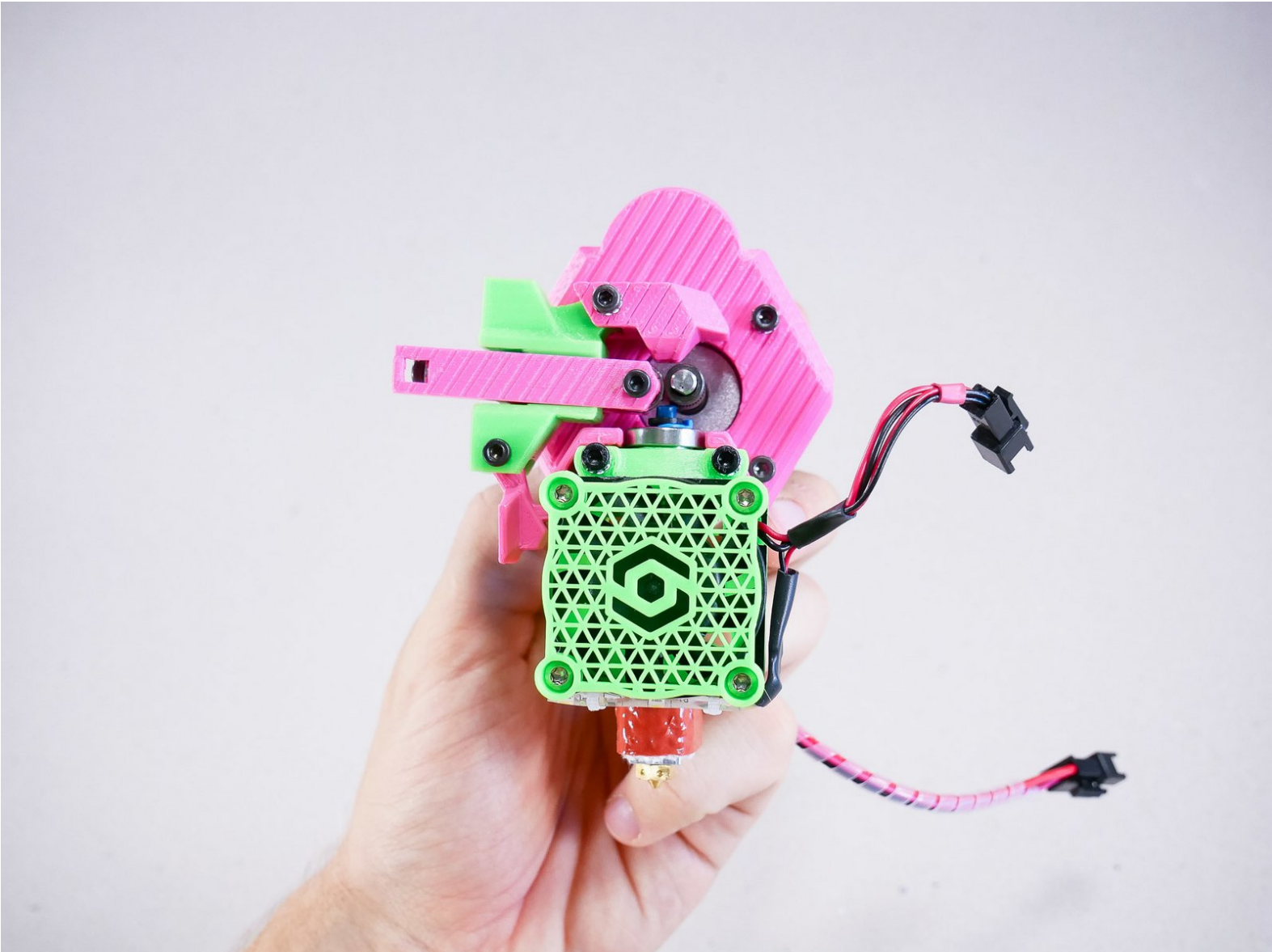




## 02. Assemble the Extruder

In this guide, we prepare the extruder.

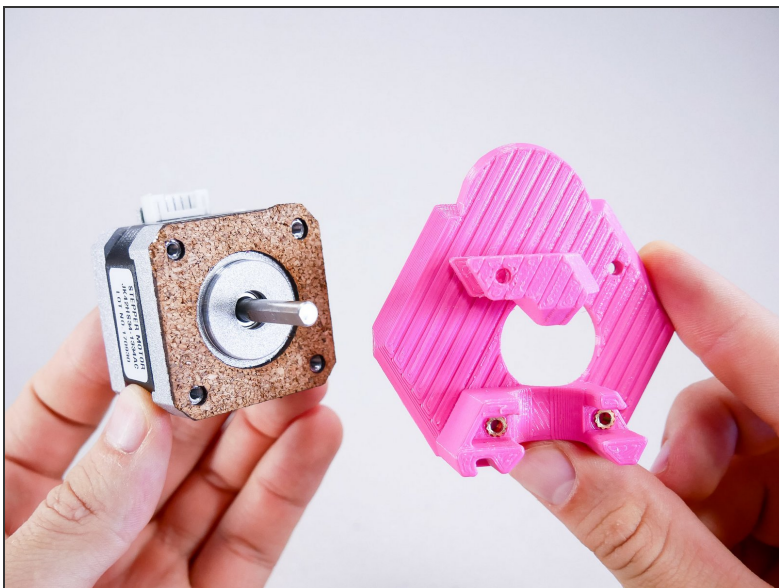


## Step 1 — ↳ Assemble the Extruder



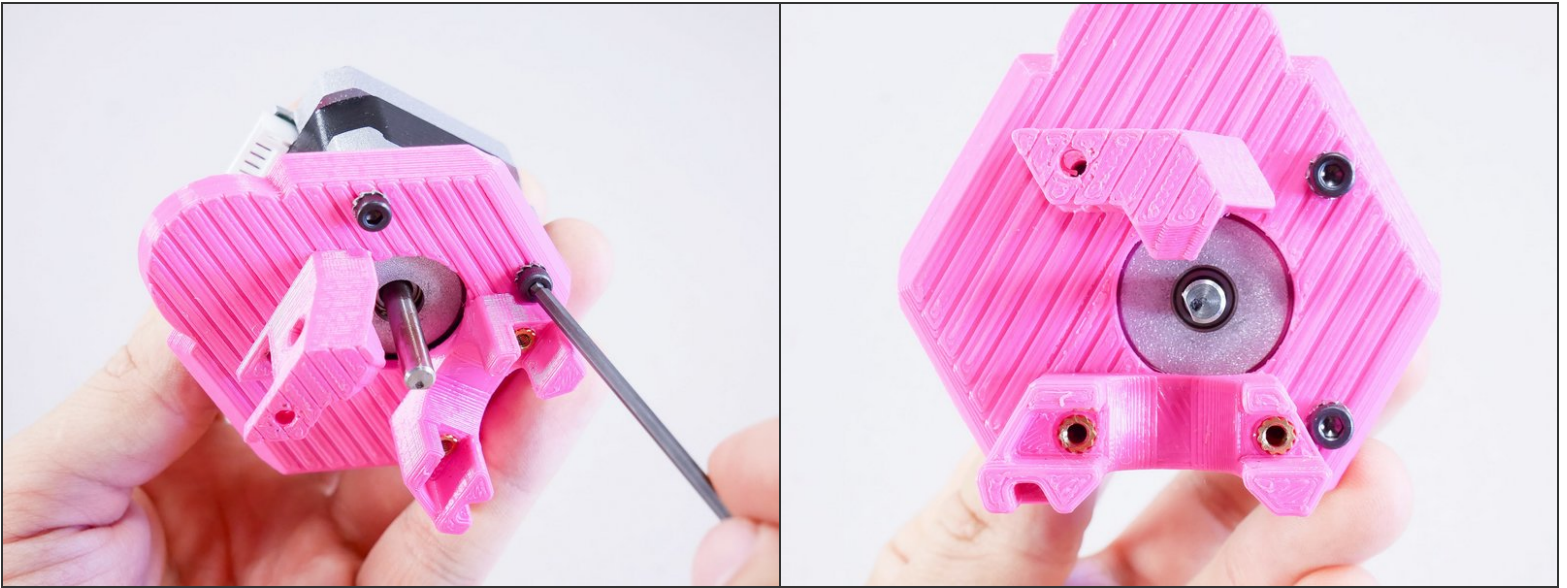
- M3x12 socket head

## Step 2



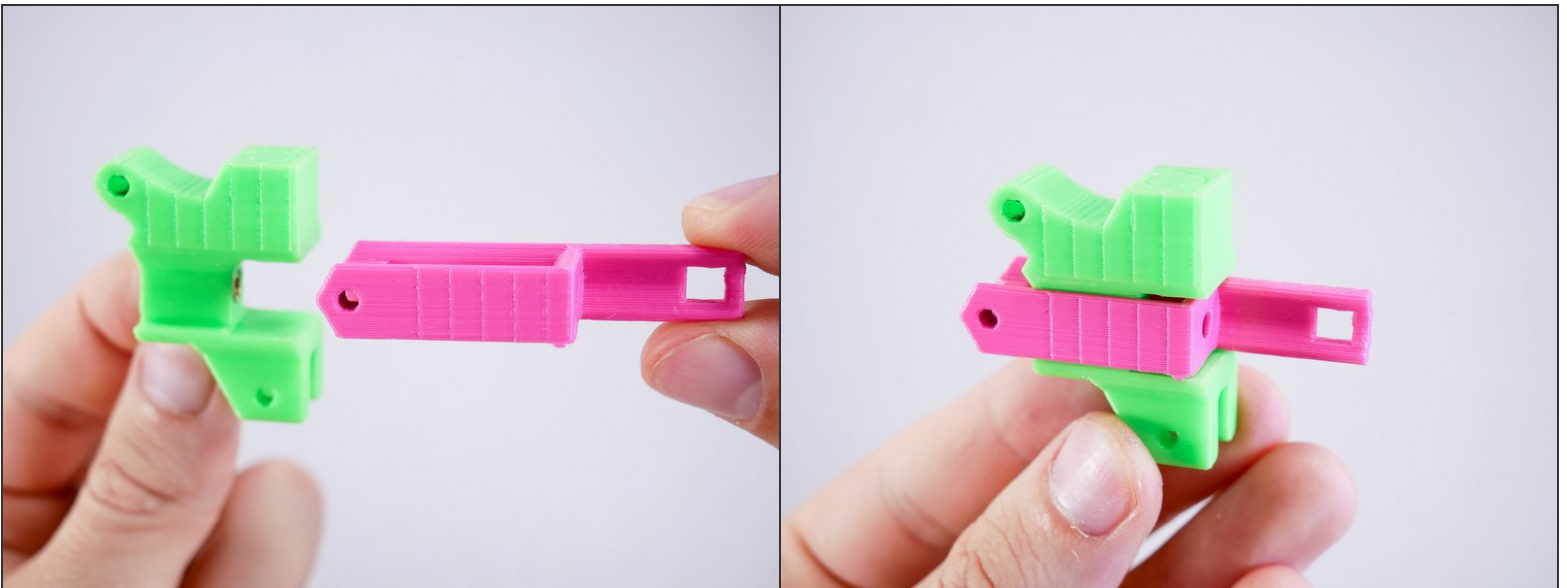
- Insert wisdom here.

### Step 3



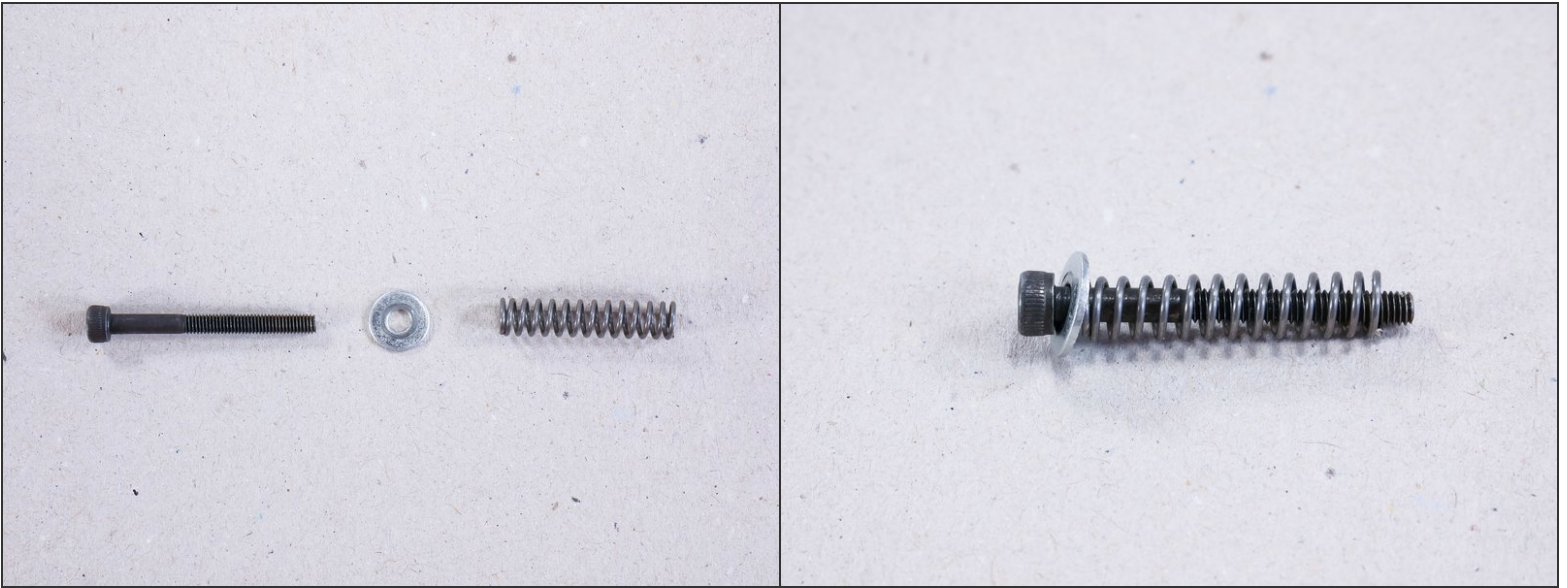
- M3x10 socket head

### Step 4



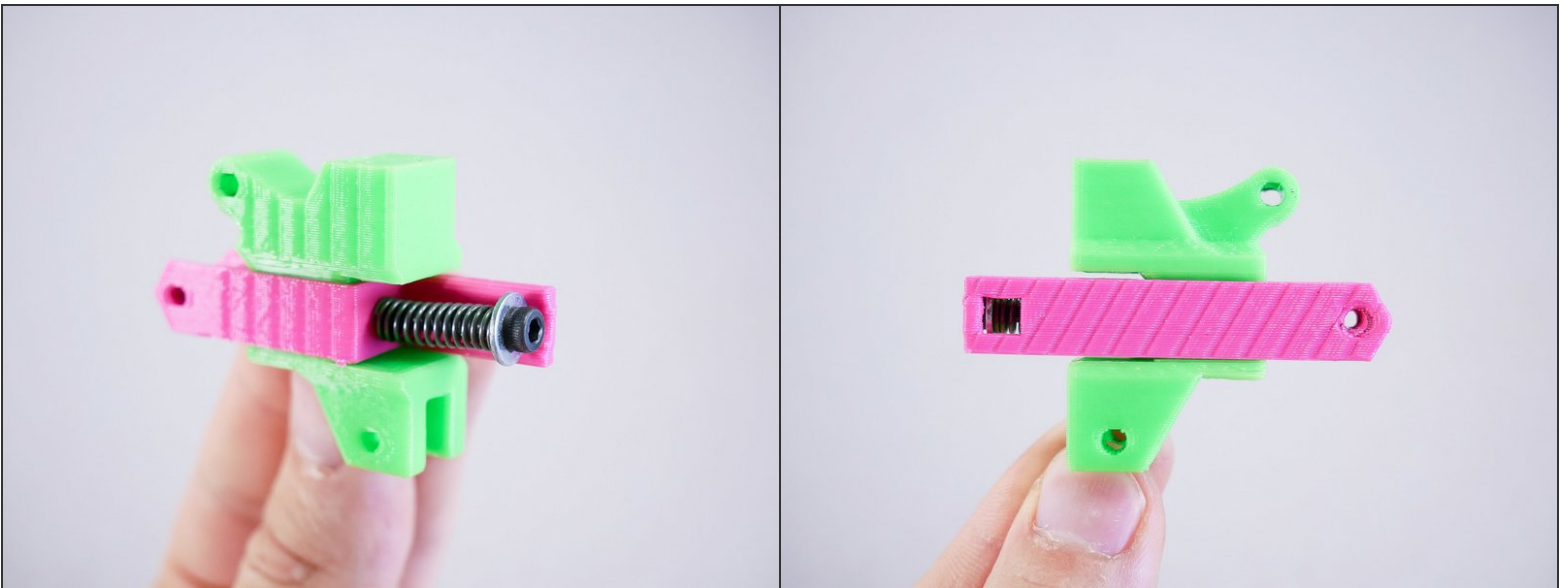


## Step 5



- M3x30 socket head

## Step 6

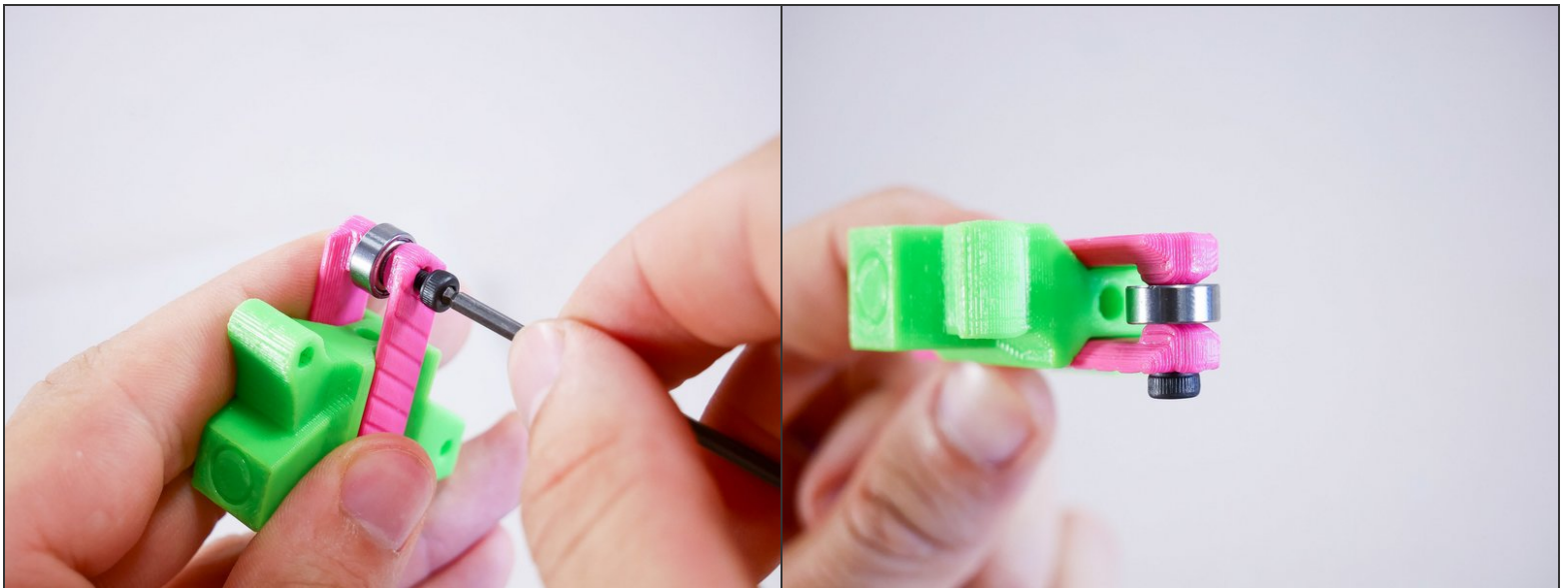


## Step 7



- M3x16 socket head

## Step 8



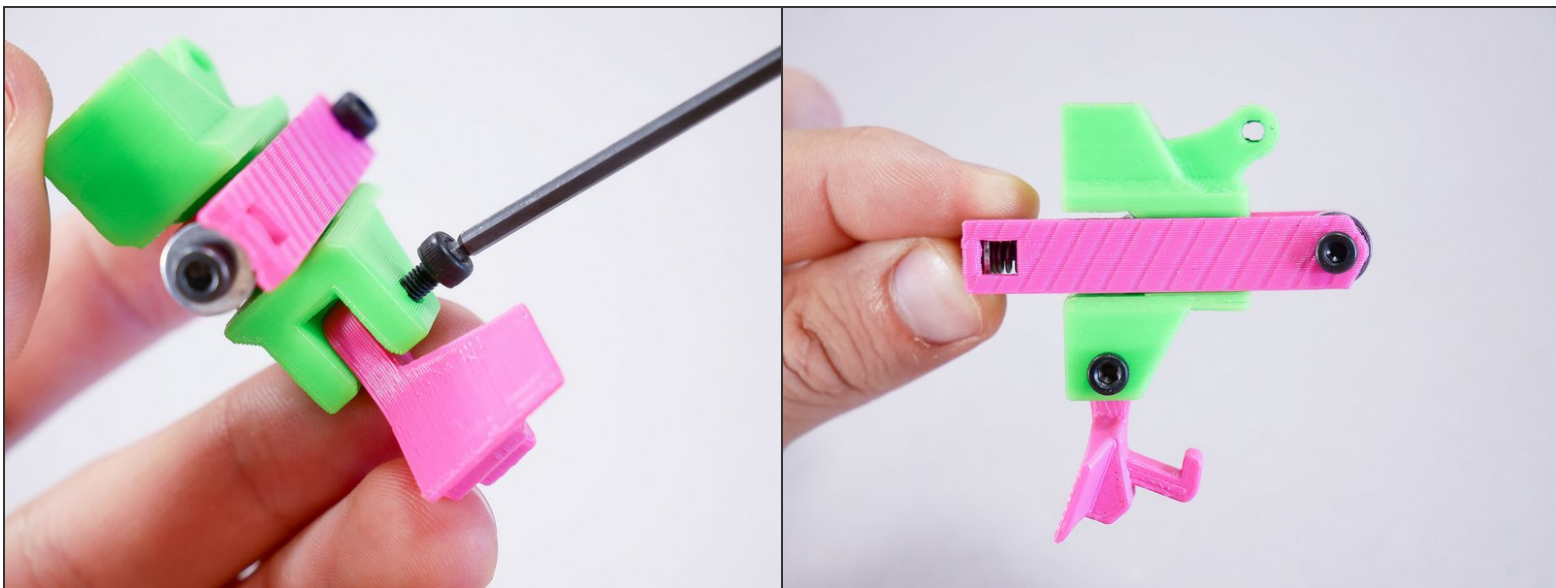
**Step 9 — ► Video: Feeder Bearing (3s, no narration)**

- ► Video: Feeder Bearing (3s, no narration)
- The bearing should spin. If it doesn't, loosen the screw a little bit.

**Step 10**

- M3x16 socket head

## Step 11



- M3x16 socket head

## Step 12 — ► Video: Loose Latch (3s, no narration)



- ► Video: Loose Latch (3s, no narration)

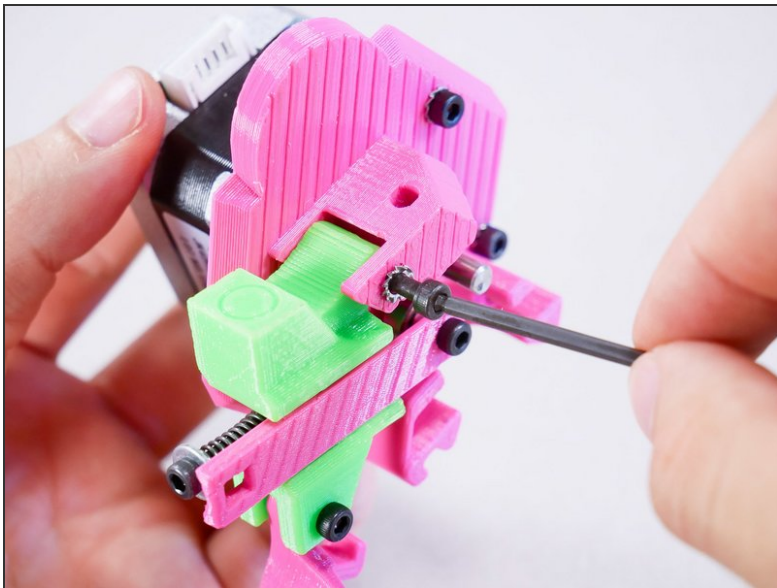


## Step 13



- M3x30 socket head

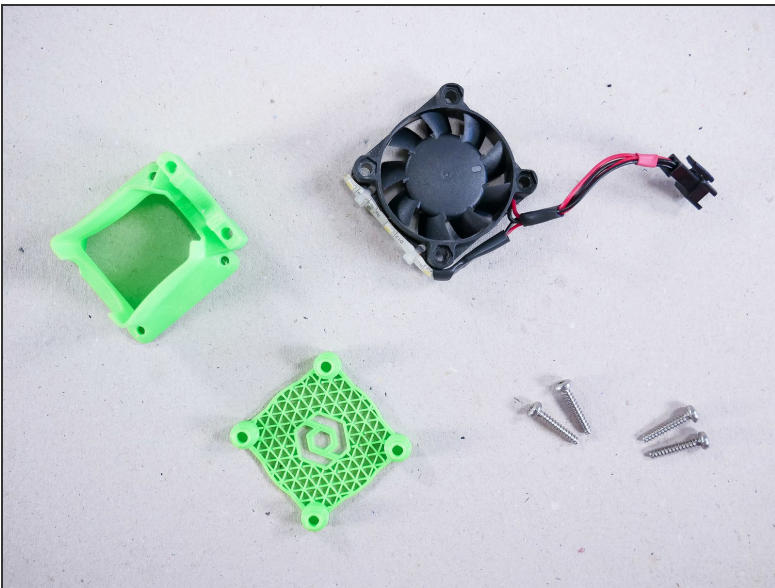
## Step 14





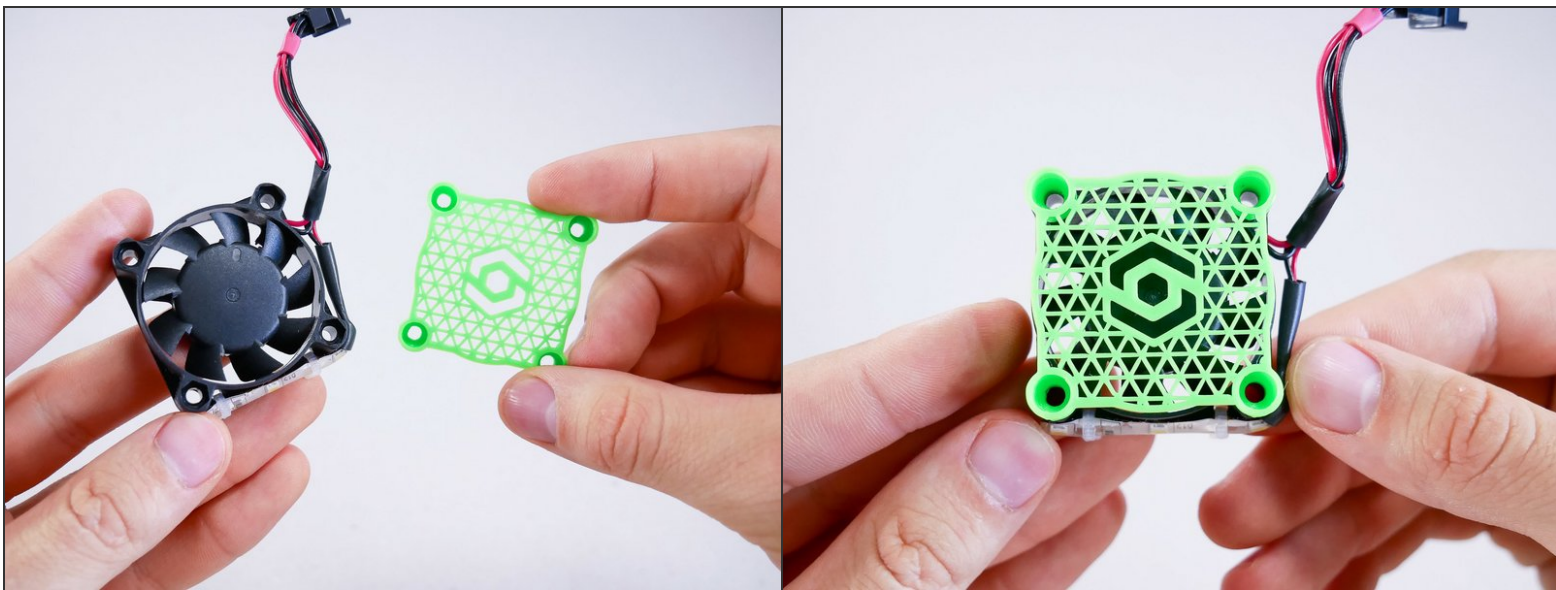
**Step 15 — ► Video: Feeder Arm Rotating (3s, no narration)**

► Video: Feeder Arm Rotating (3s, no narration)

**Step 16 — You'll need:**

- Hotend shroud
- Hotend fan cover
- Hotend fan
- Plastite screws (super smart screws specifically designed not to get loose in plastic) (4)

## Step 17



- Make sure the LED strip is at the bottom as shown.

## Step 18



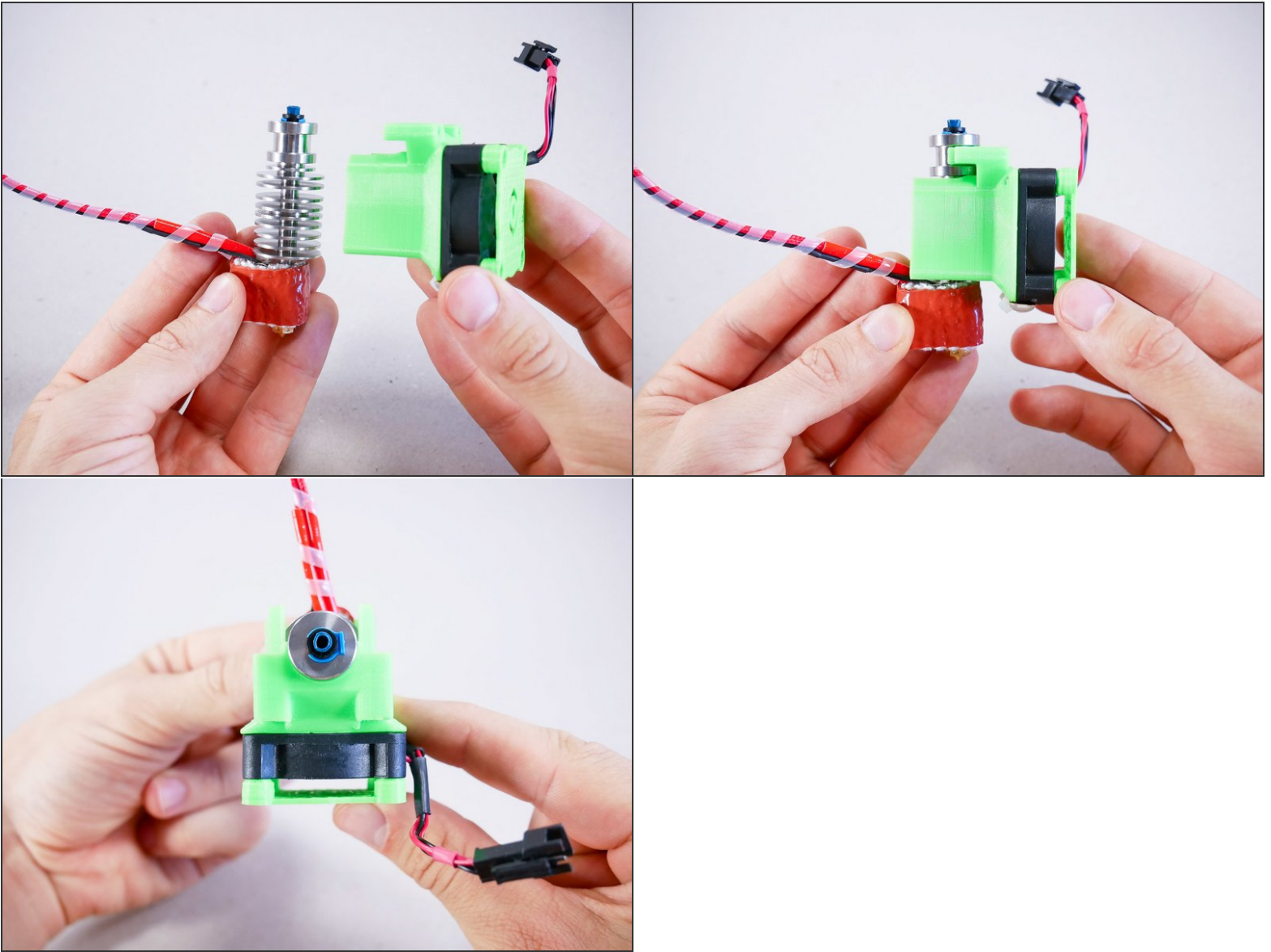
- plastite screws

## Step 19





## Step 20

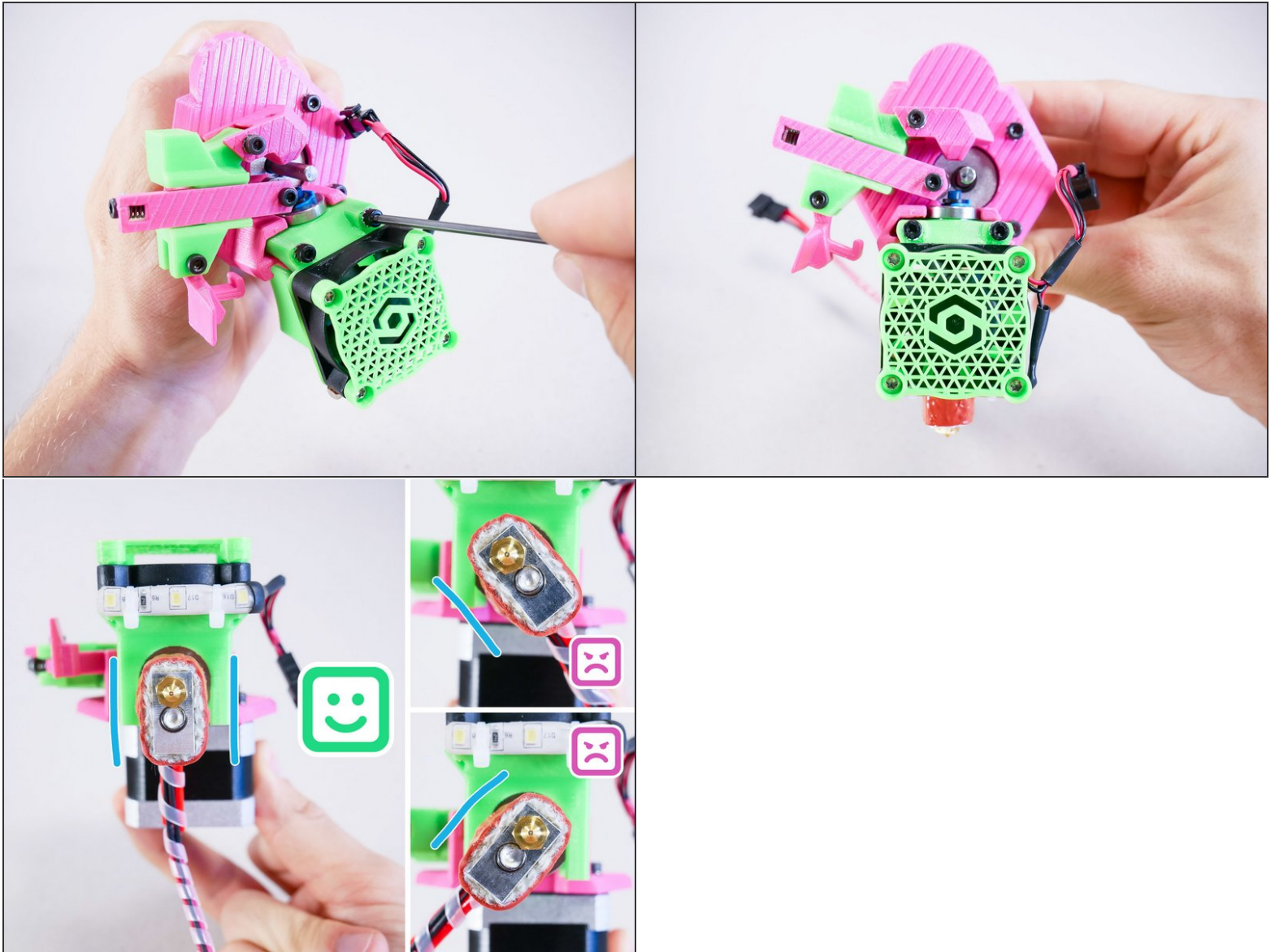


## Step 21



- M3x25 socket head

## Step 22

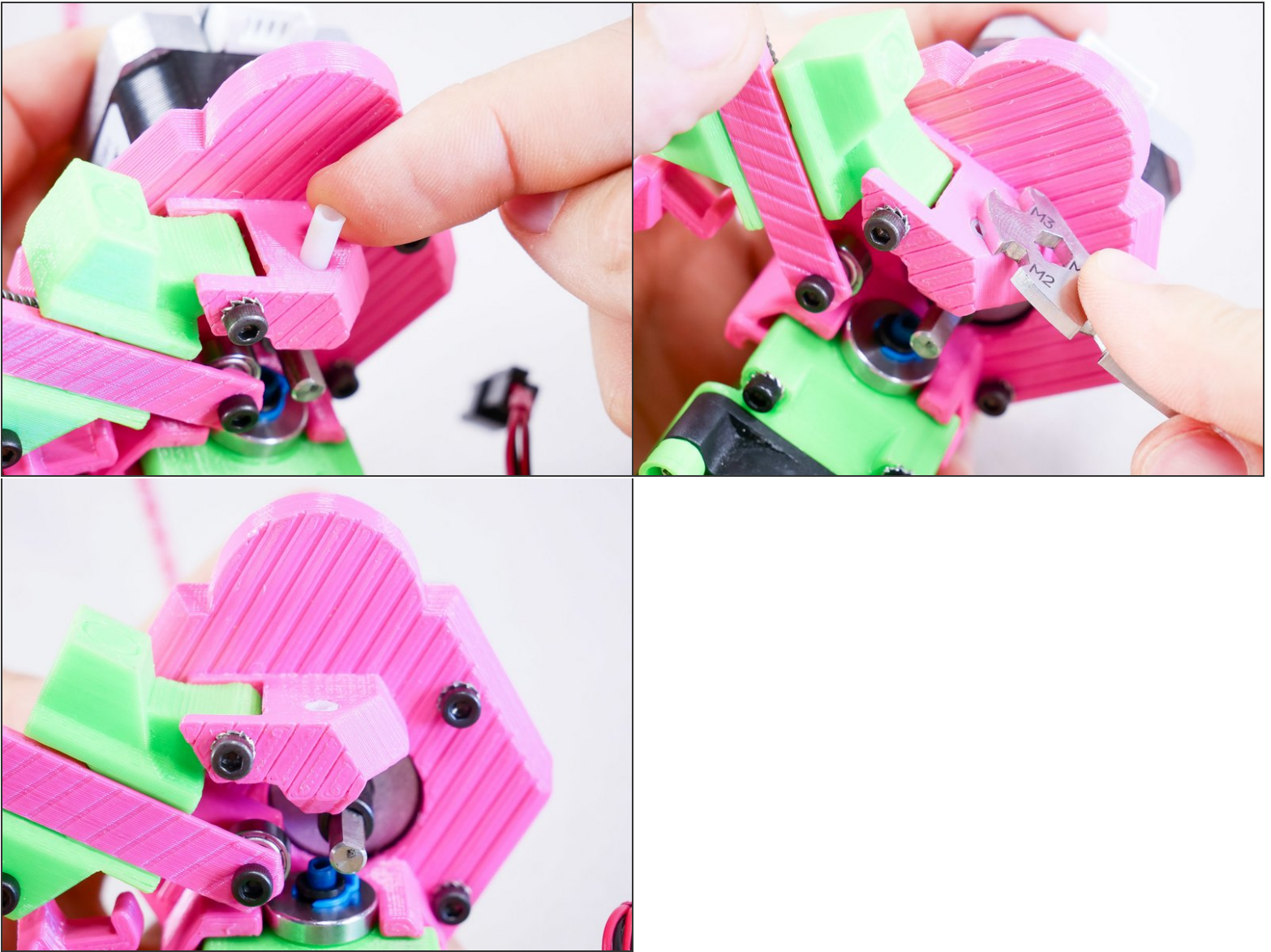




## Step 23



- a short piece of PTFE tubing

**Step 24**

**Step 25****Step 26 — ► Video: Align the Drive Gear (1min, narration)**

- ► Video: Align the Drive Gear (1min, narration)



## Step 27 — It's done!

