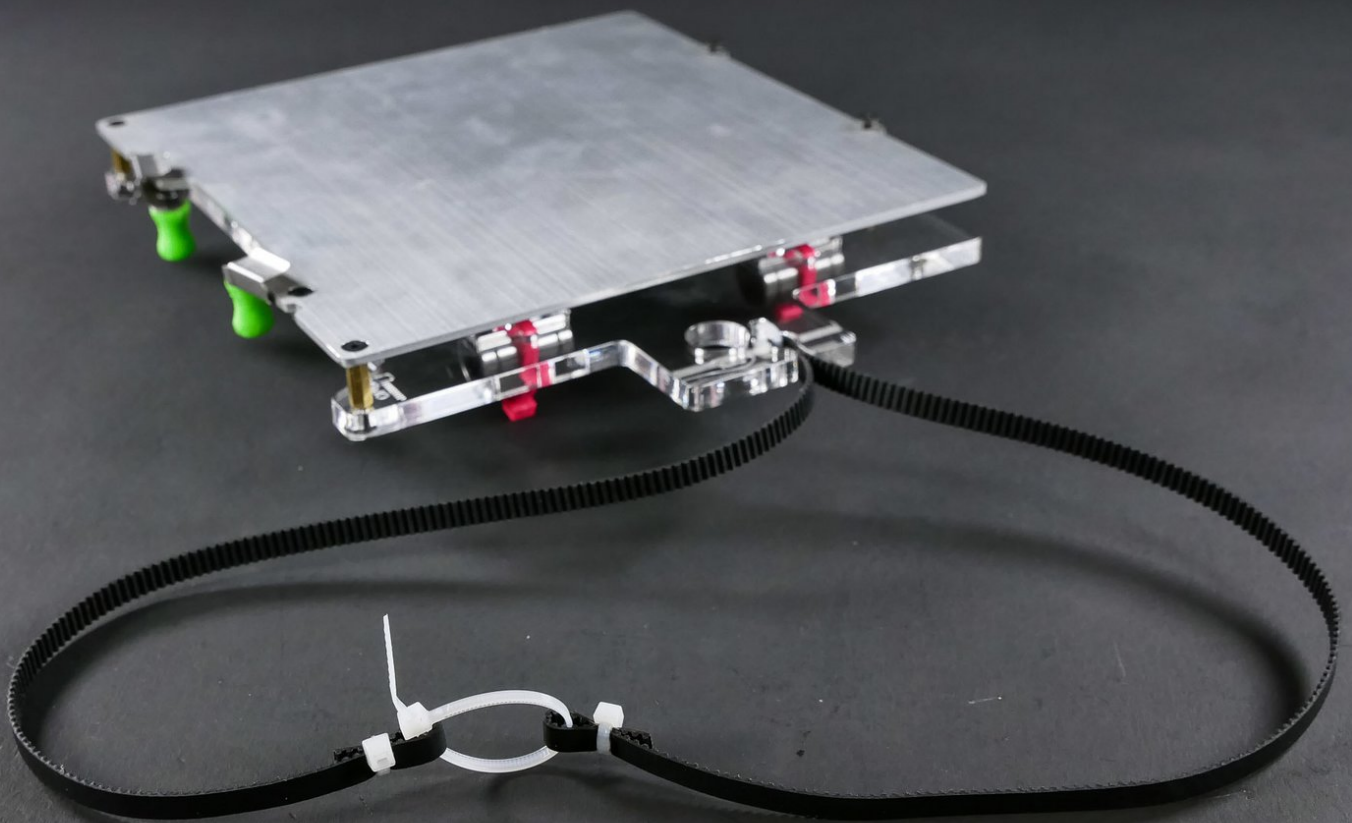
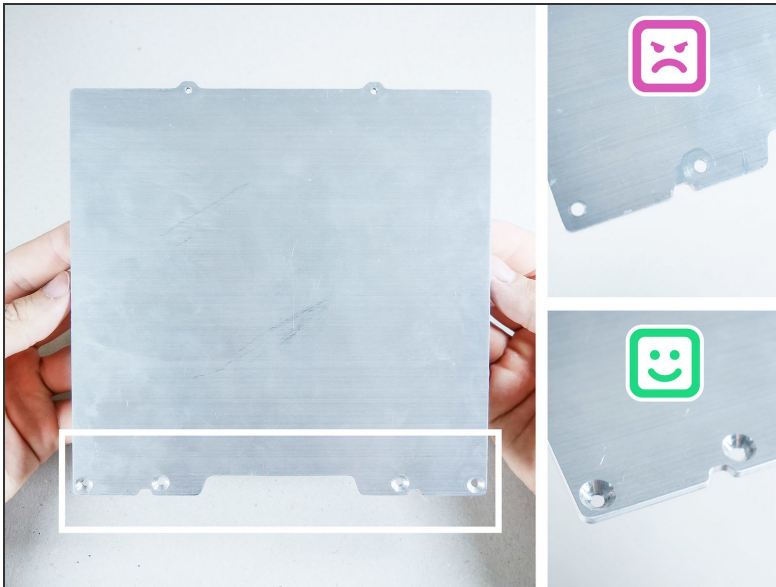




02. Y Assembly (makers cold)



Step 1 — ↳ Install the Front Clips

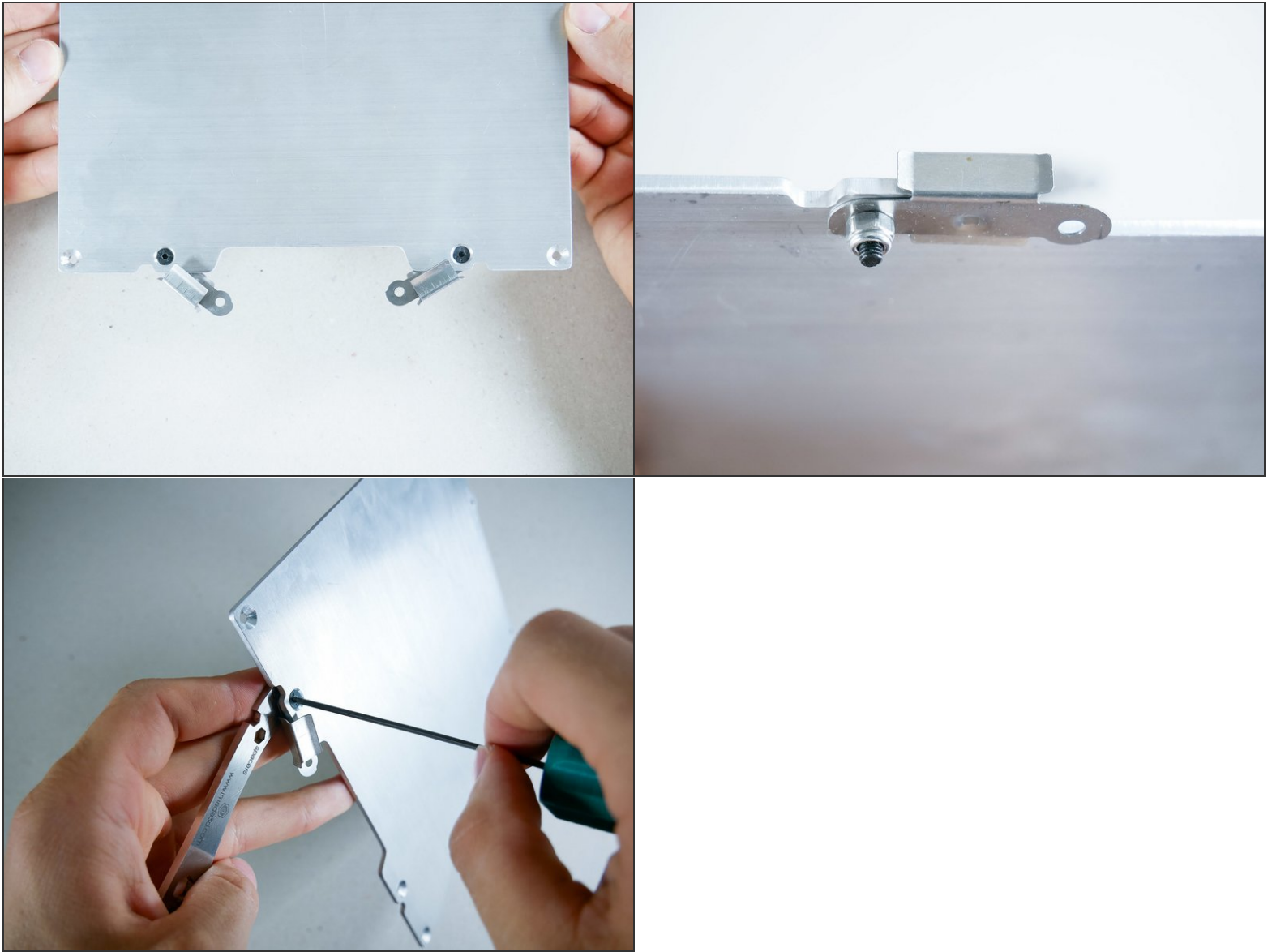


Step 2



- M3x10 flat head screws (2)
- M3 lock nuts (2)

Step 3



⚠ Leave the screw a bit loose so the clips can swivel.

Step 4

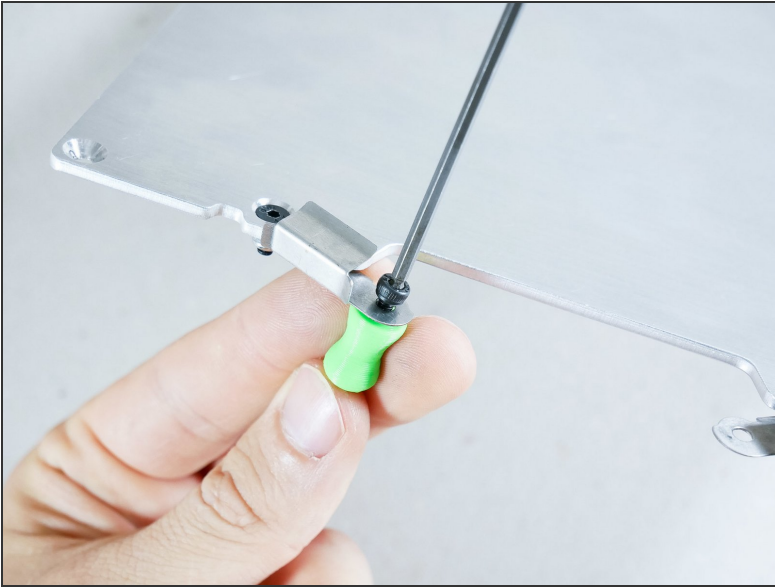


- ► Video: Clips Swivel (5s, no narration)
- The clips should swivel like so.

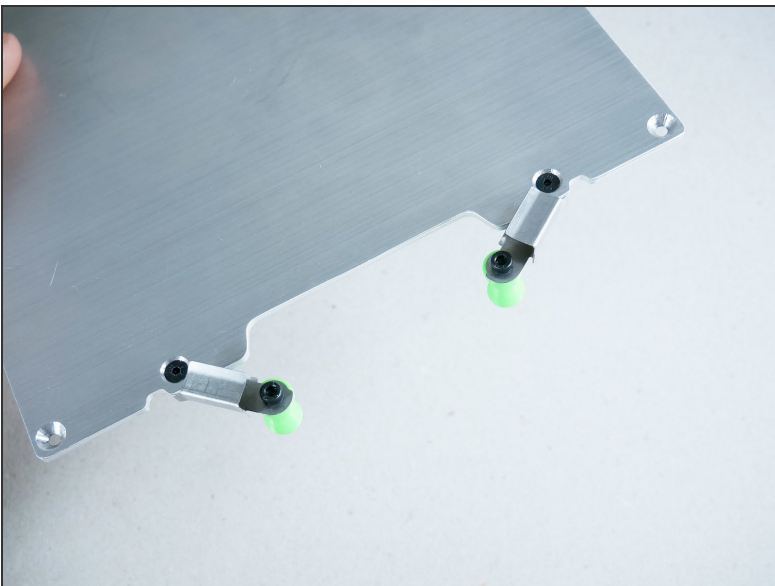
Step 5



Step 6

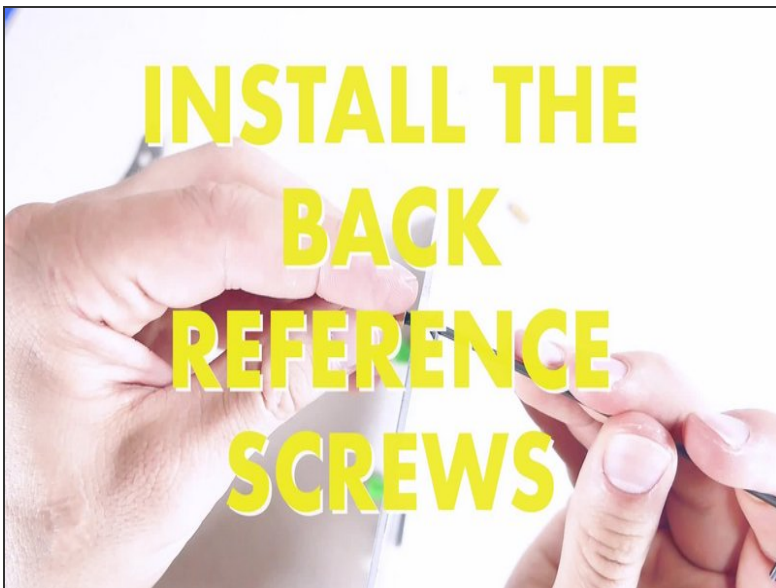


Step 7 — Looking good!



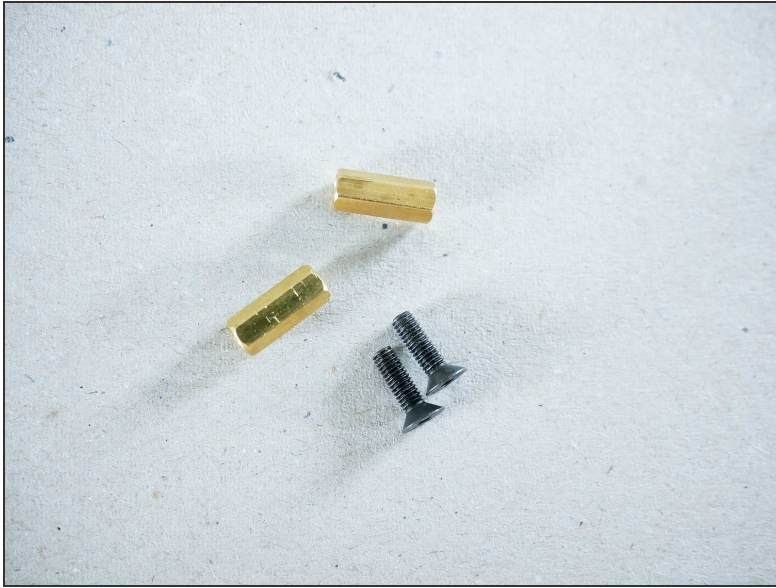
Step 8 — ↪ Install Back Reference Screws

- M3x8 flat head screws (2).

Step 9 — ▶ Video: Install the Back Reference Screws (3min, narration)

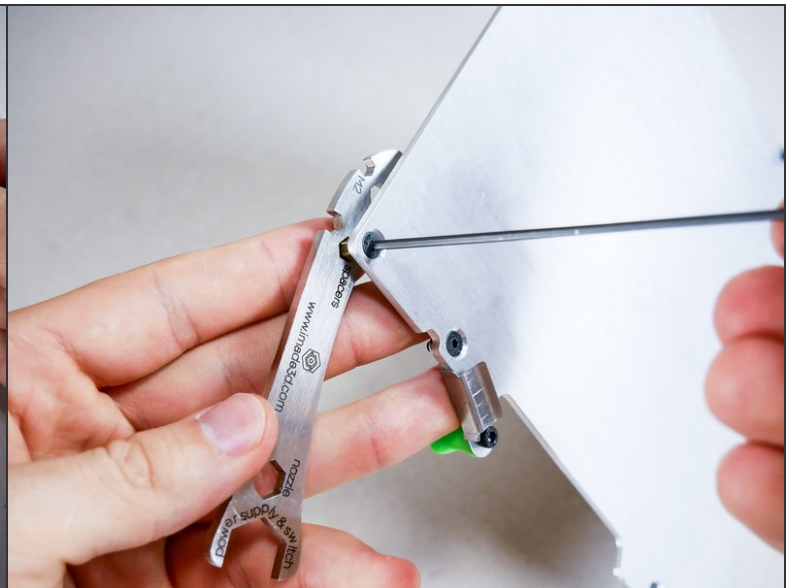
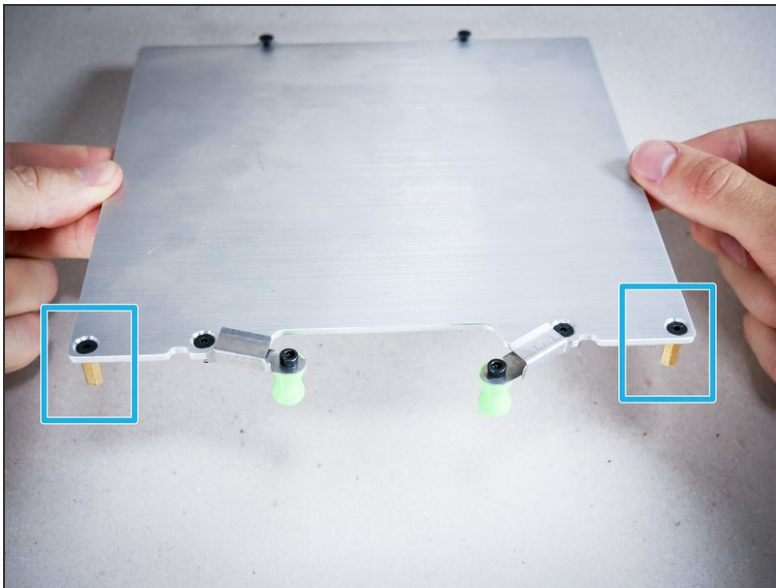
- ▶ Video: Install the Back Reference Screws (3min, narration)

Step 10 — ↪ Install the Front Standoffs

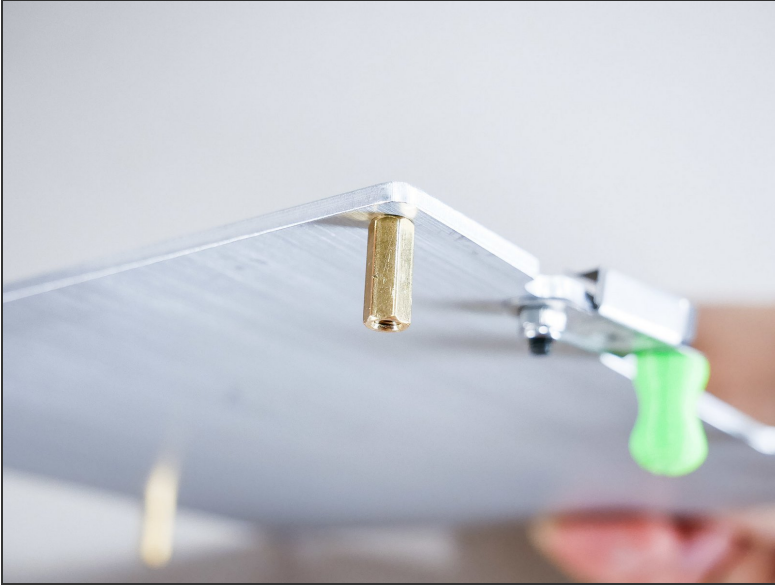


- M3x10 flat head screws

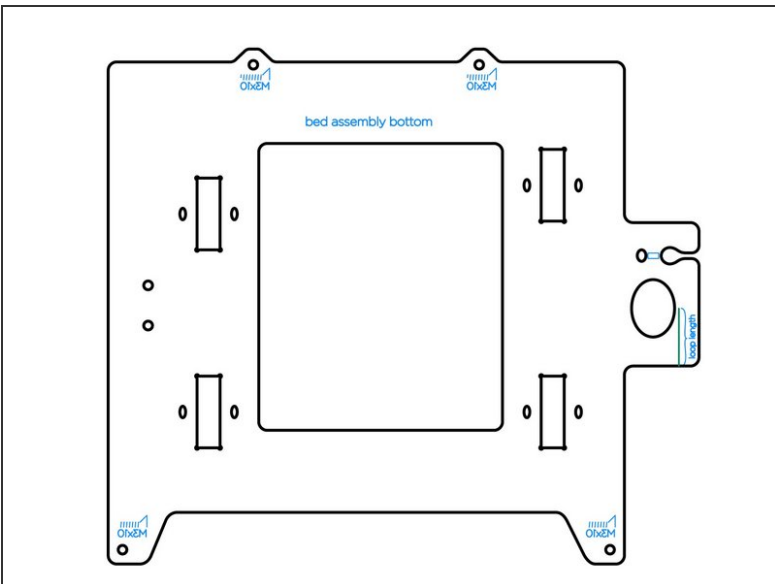
Step 11



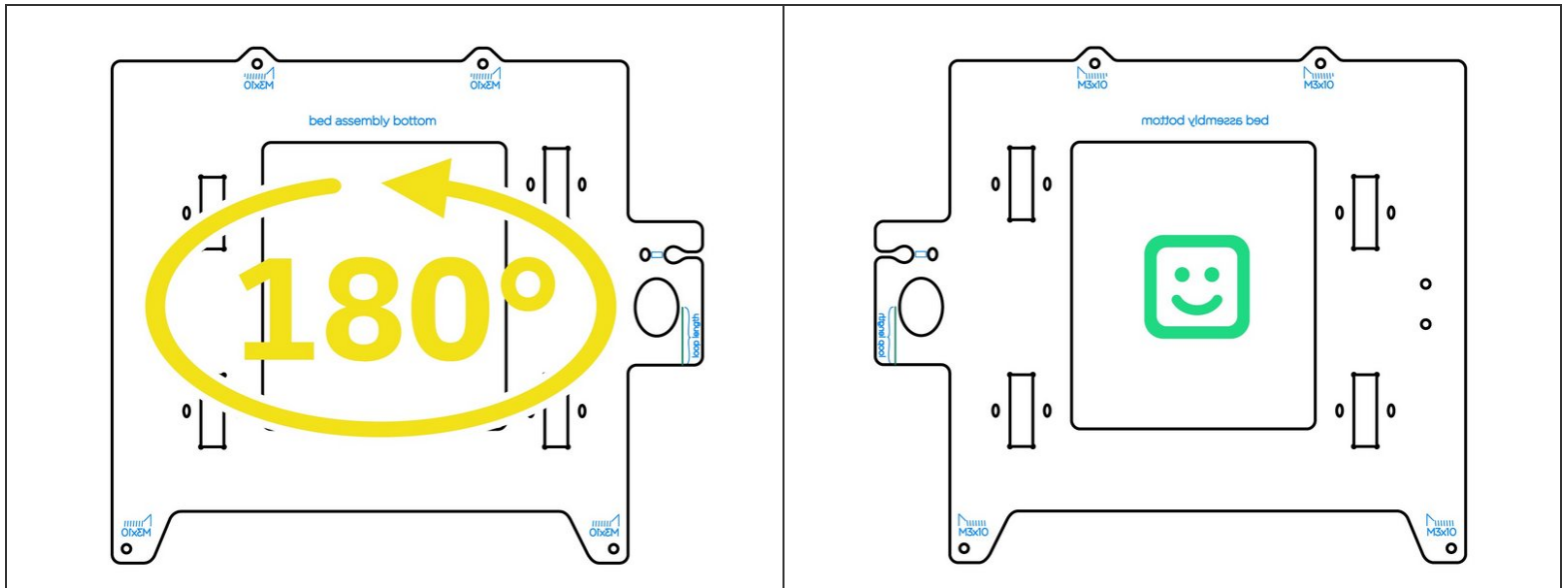
Step 12 — Looking good!



Step 13 — ↵ Install the Y Linear Bearings



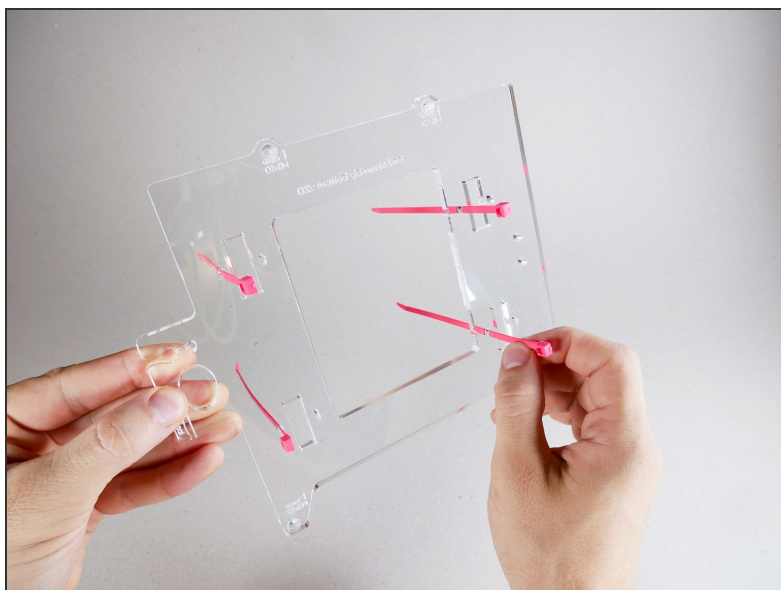
Step 14



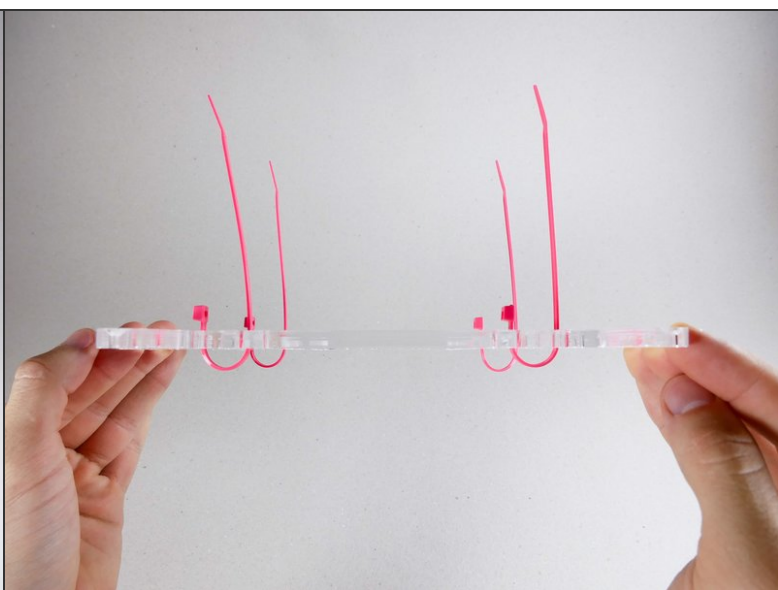
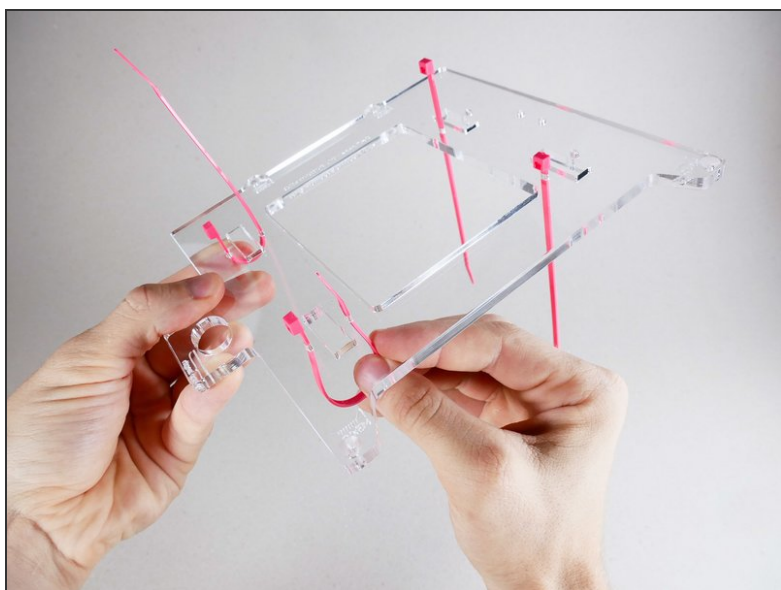
Step 15



Step 16




Step 17

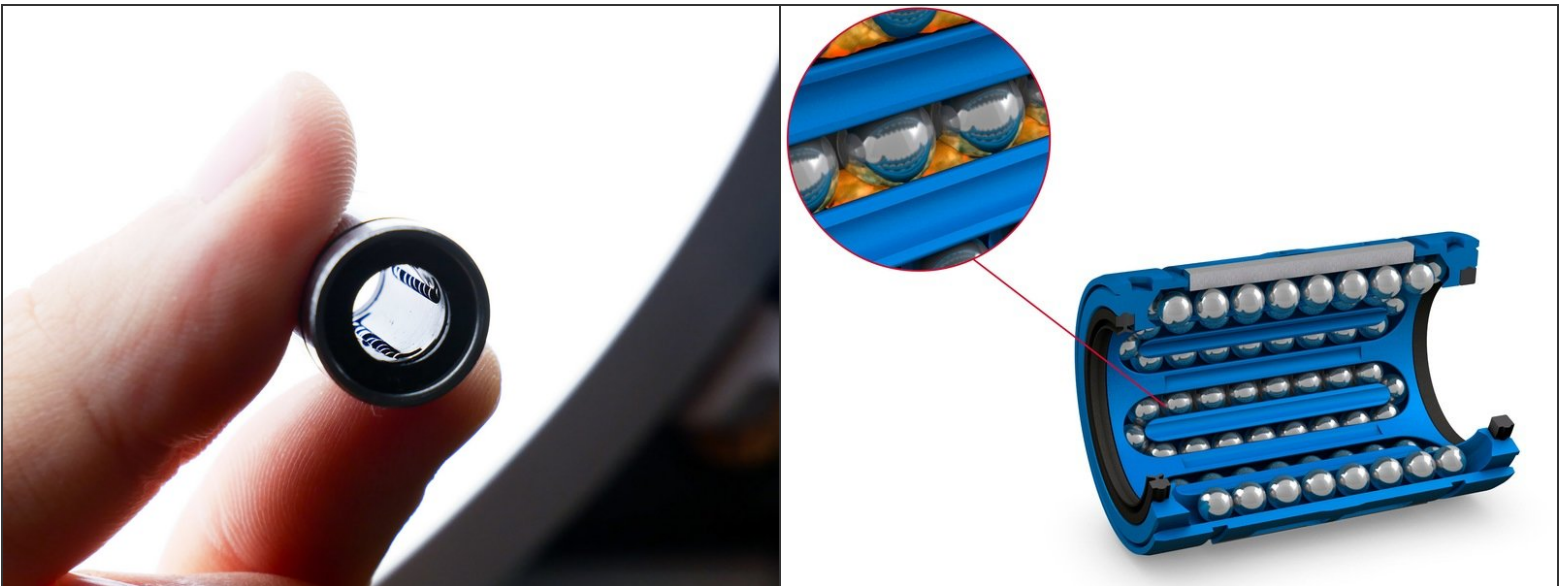


Step 18



-  The bearings come covered in light preserving oil so they don't rust. You'll do best to clean them with a paper towel.

Step 19



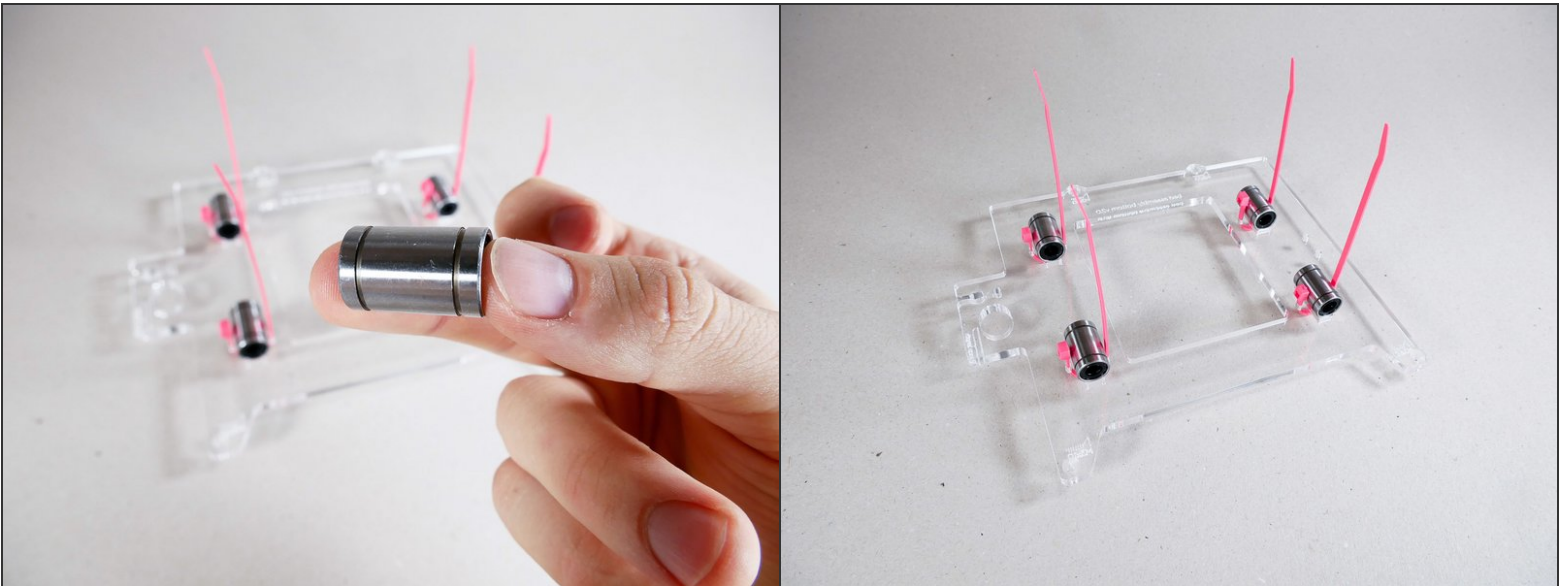
- If you look closely, you can see the steel balls inside of their oval casings.
- Image courtesy: [SKF manufacturing](https://www.skf.com)

Step 20

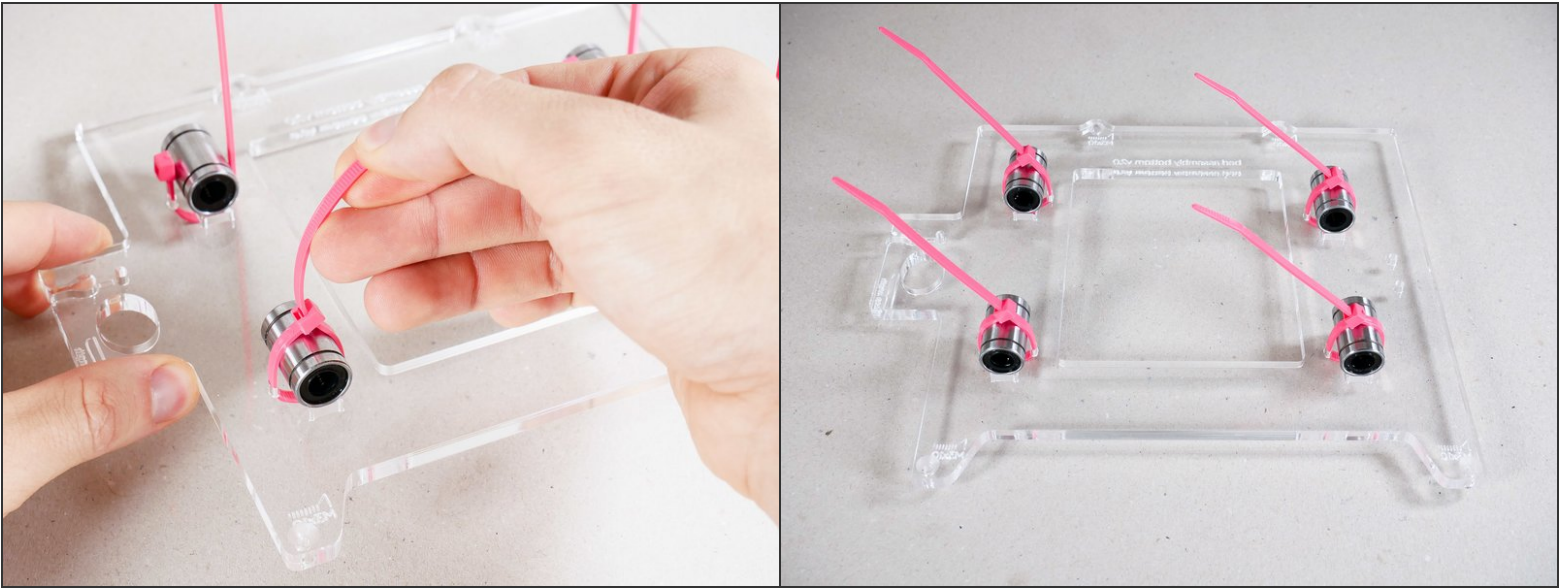


- Put a drop of oil onto the balls inside of the bearing. This will make the bearings run smoother and quieter.
- One drop (per track) is well enough :-)

Step 21



Step 22



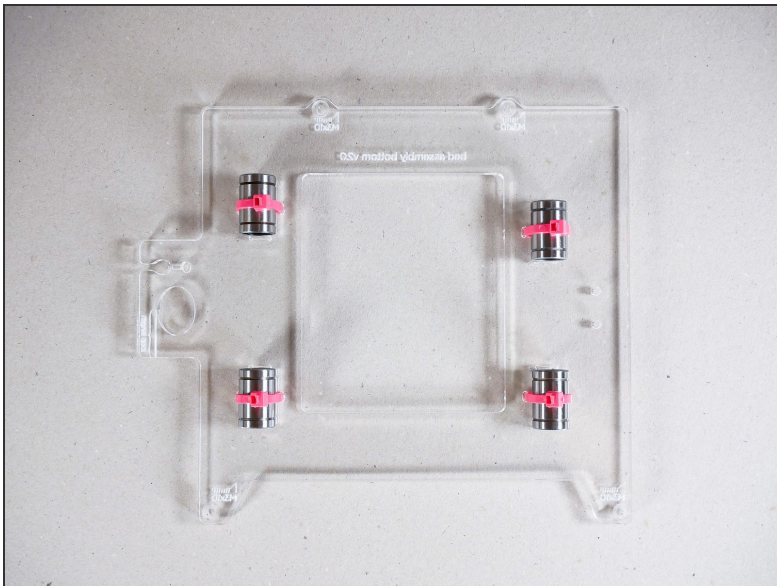
Step 23



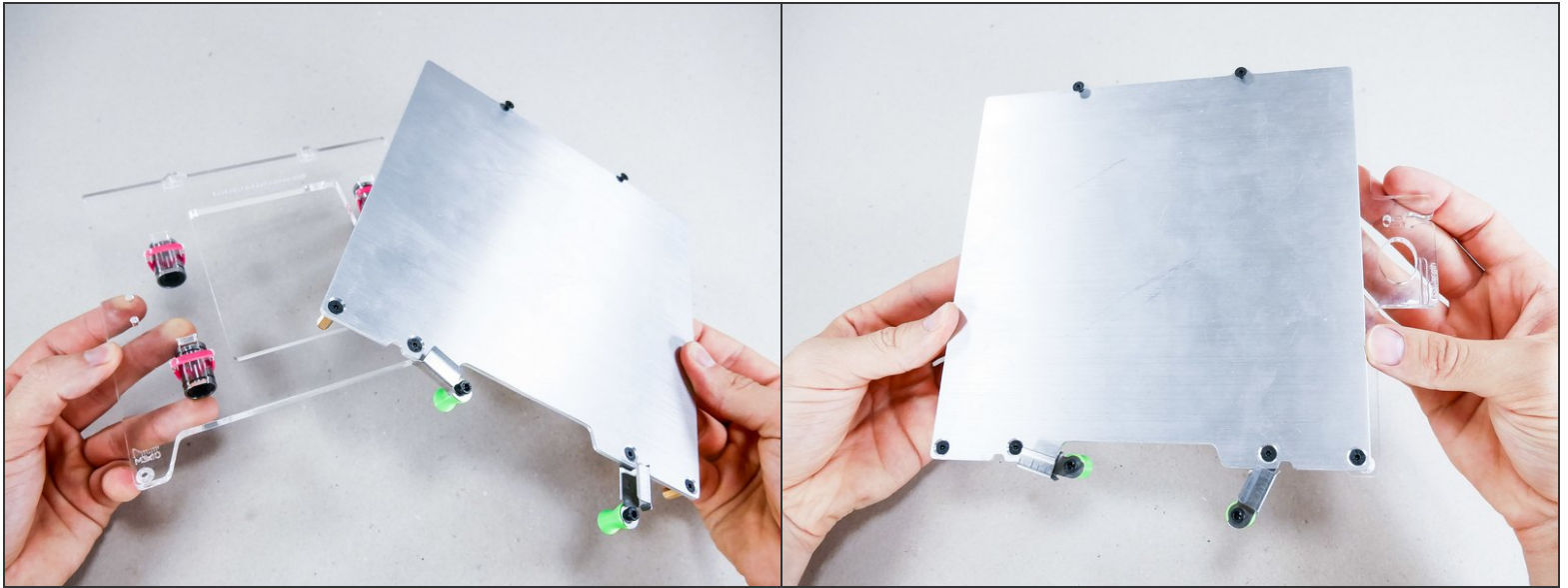
- [There's a video of the tightening motion in the next step]

Step 24 — ► Video: Tighten The Y Bearings (7s, no narration)

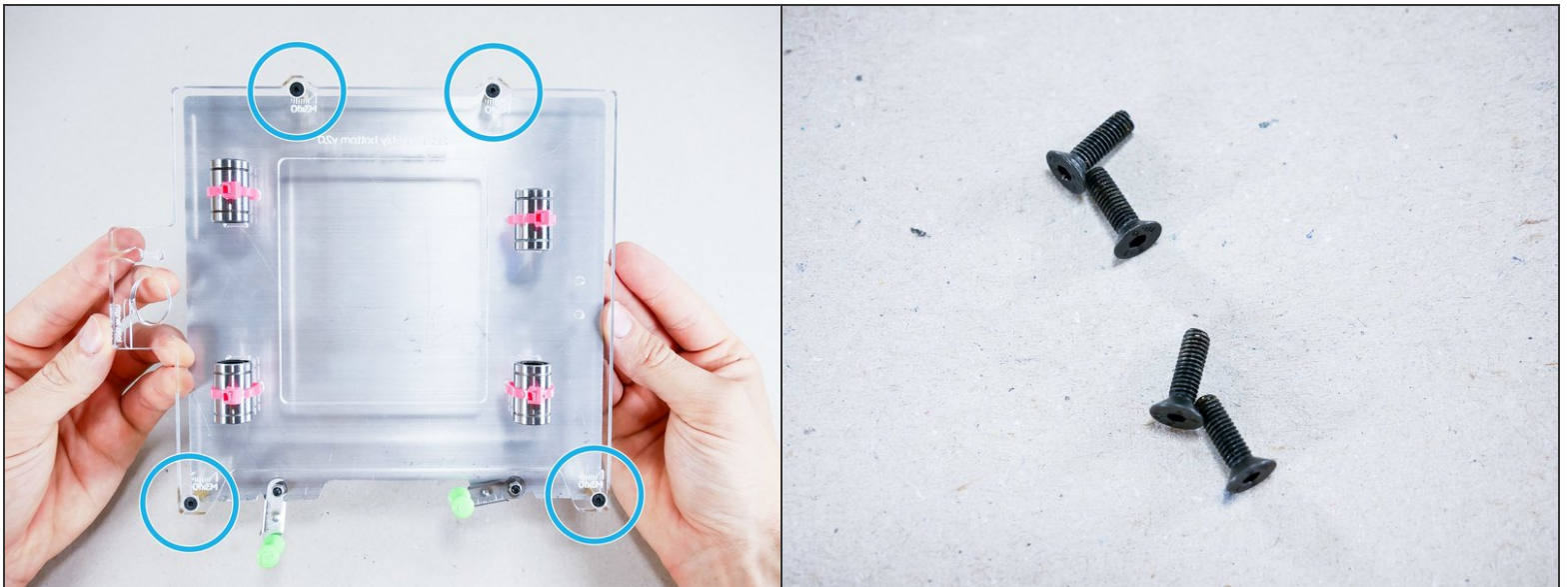
- ► Video: Tighten The Y Bearings (7s, no narration)

Step 25 — Looking good!

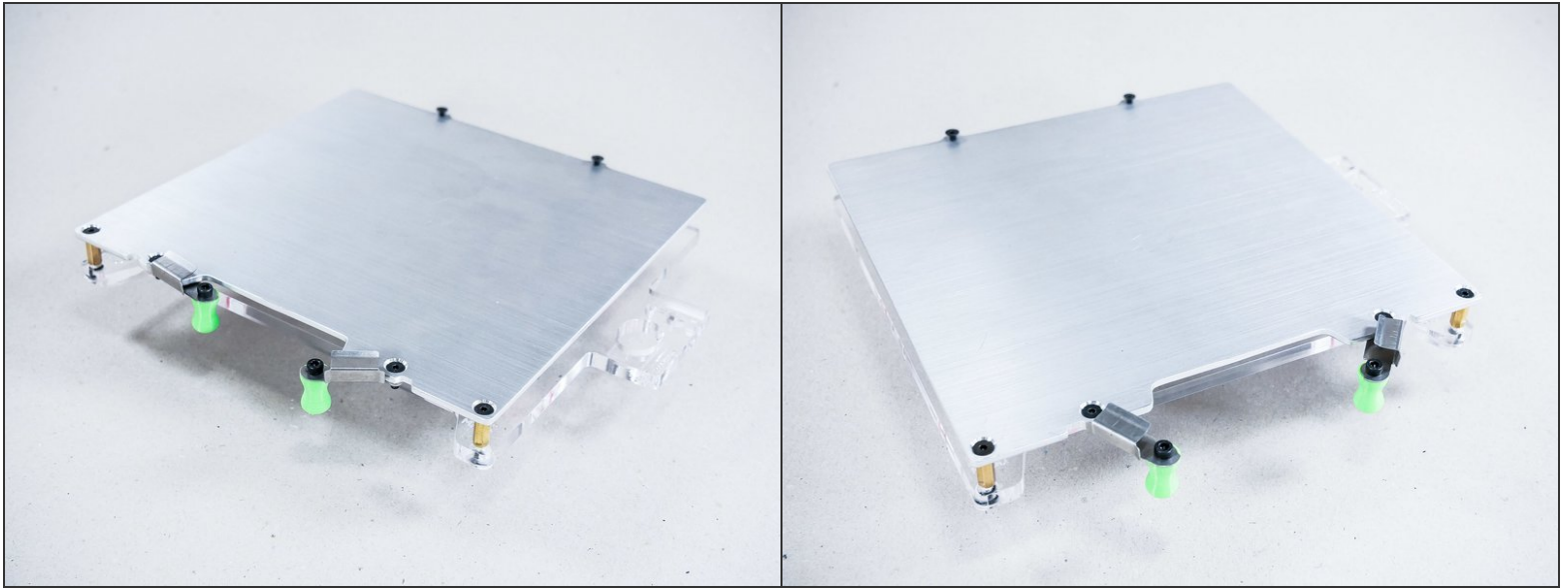
Step 26 — ↳ Sandwich



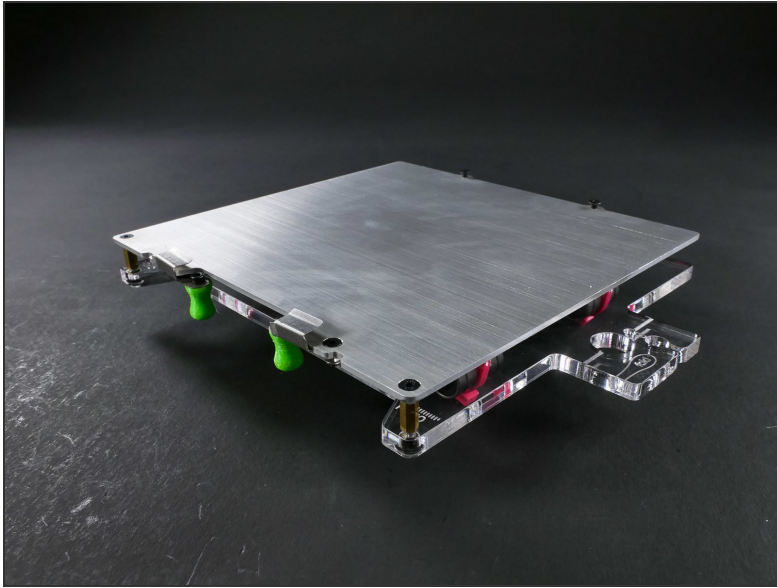
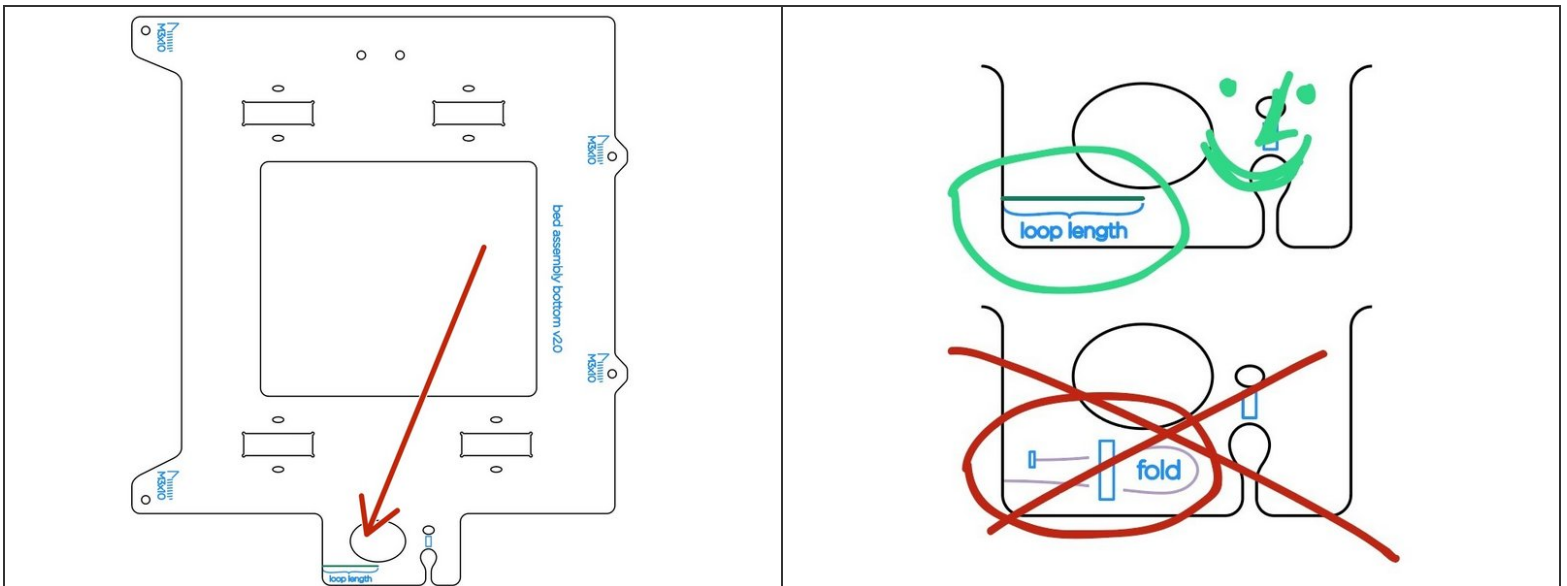
Step 27



- M3x10 flat head

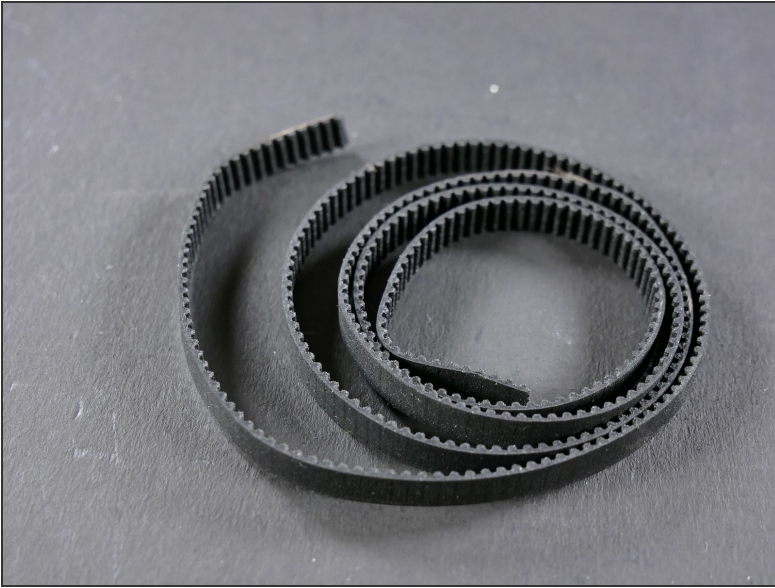
Step 28 — Looking good!**Step 29 — ► Video: Tighten the Front Clips (1 min, narration)**

- ► Video: Tighten the Front Clips (1 min, narration)

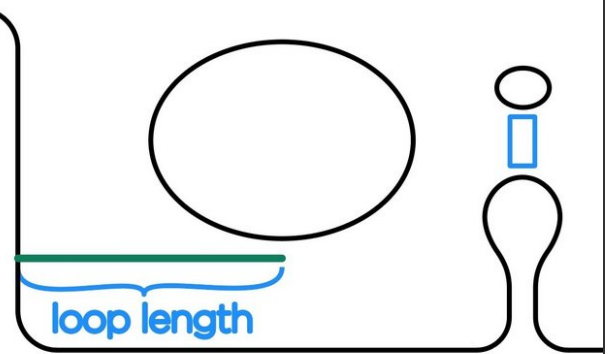
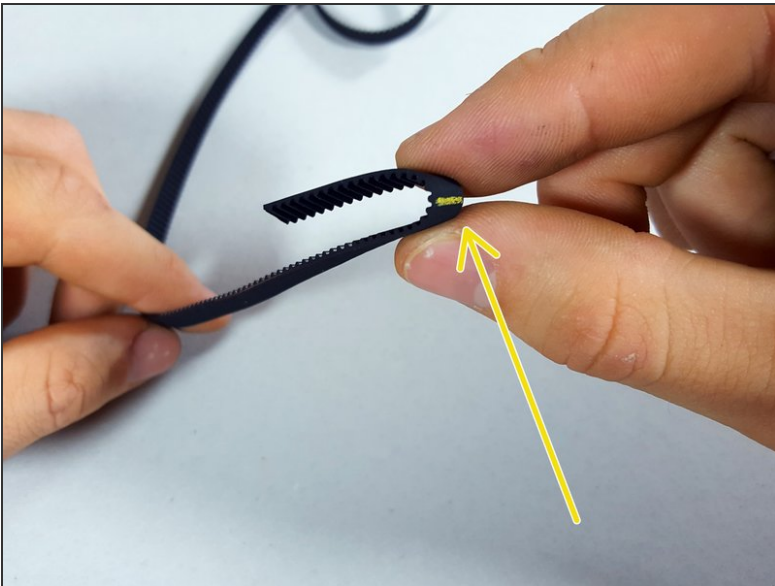
Step 30 — ↳ Attach the Y Belt (cold)**Step 31**

⚠ [update] The etchings on the bottom of the Y assembly have changed. Functionally, it's the same.

Step 32



Step 33

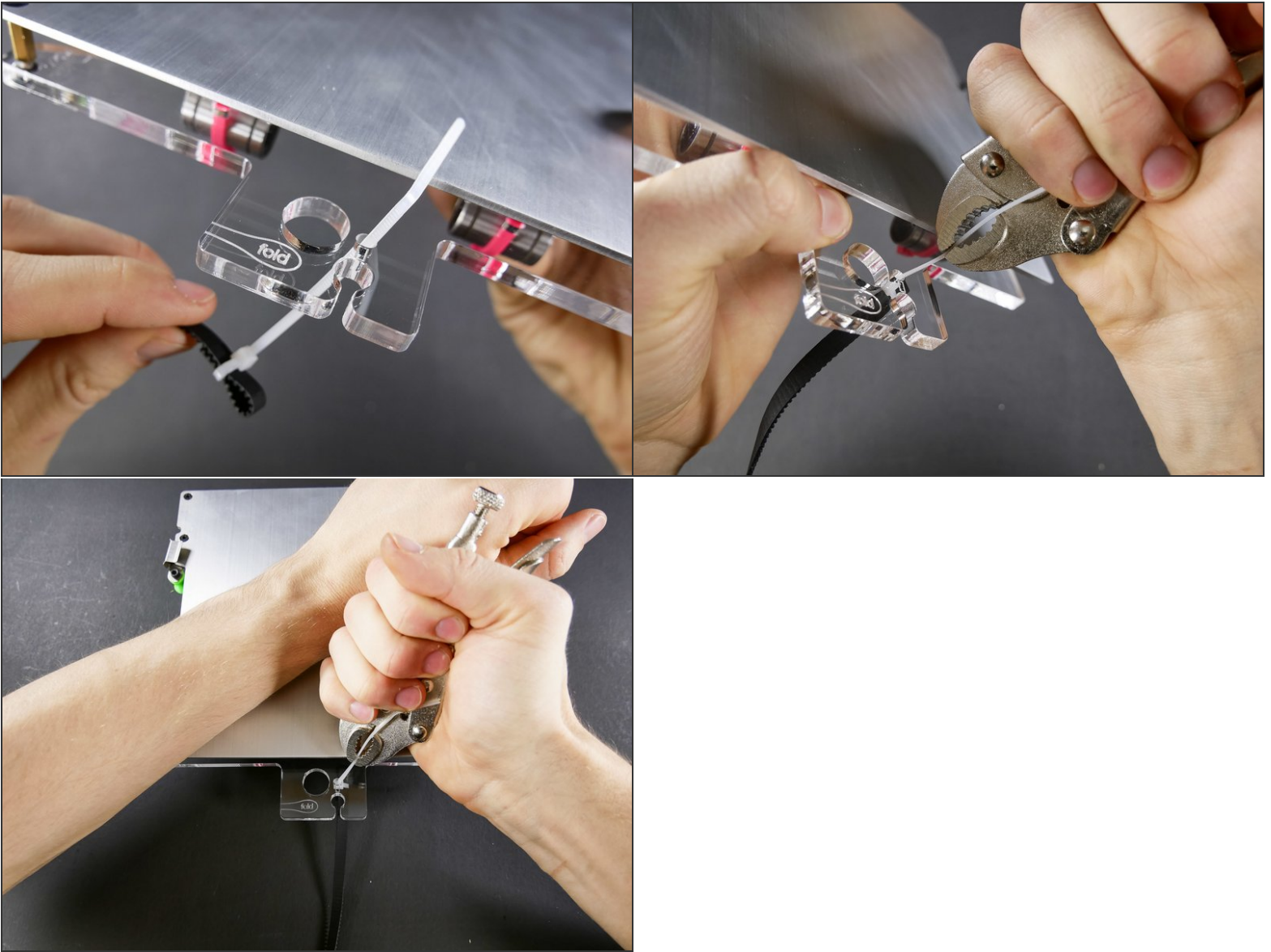


- The marks on the belt mark the the tops of the loops.
- (The mark is 20mm from the end of the belt.)

Step 34

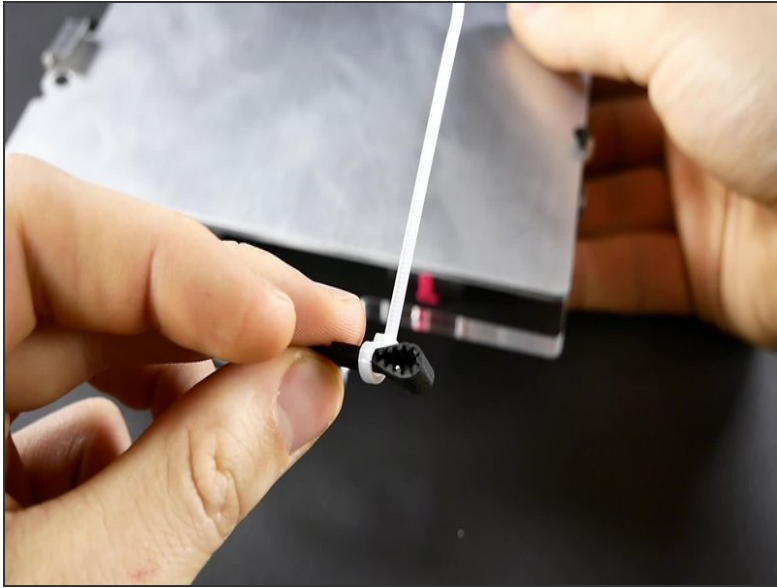


Step 35



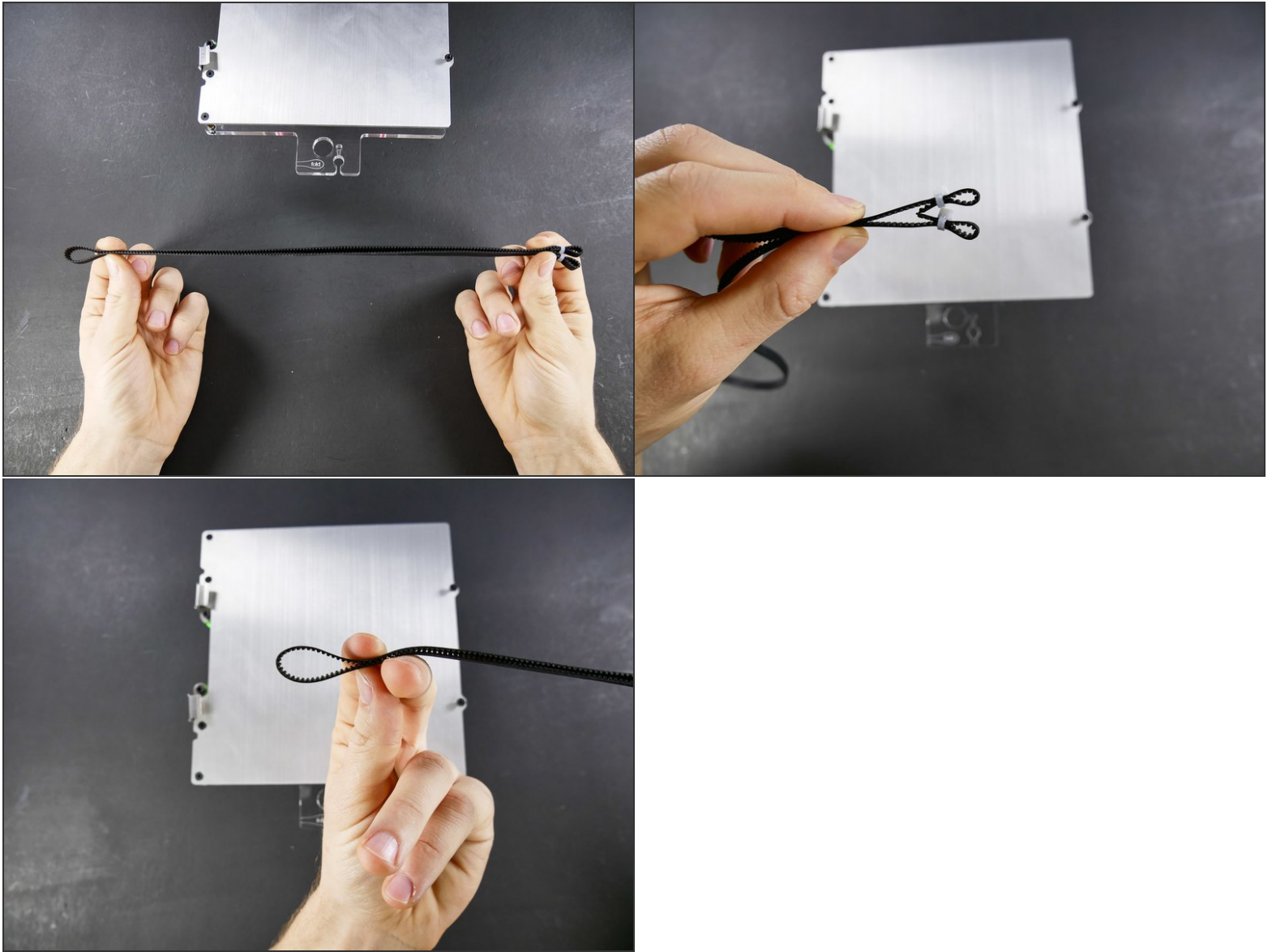
👉 This is just a very convenient **zip tightening method**.

- ▶ There's VIDEO in the next step.

Step 36 — ► Video: Tighten the Y Belt Zip Tie

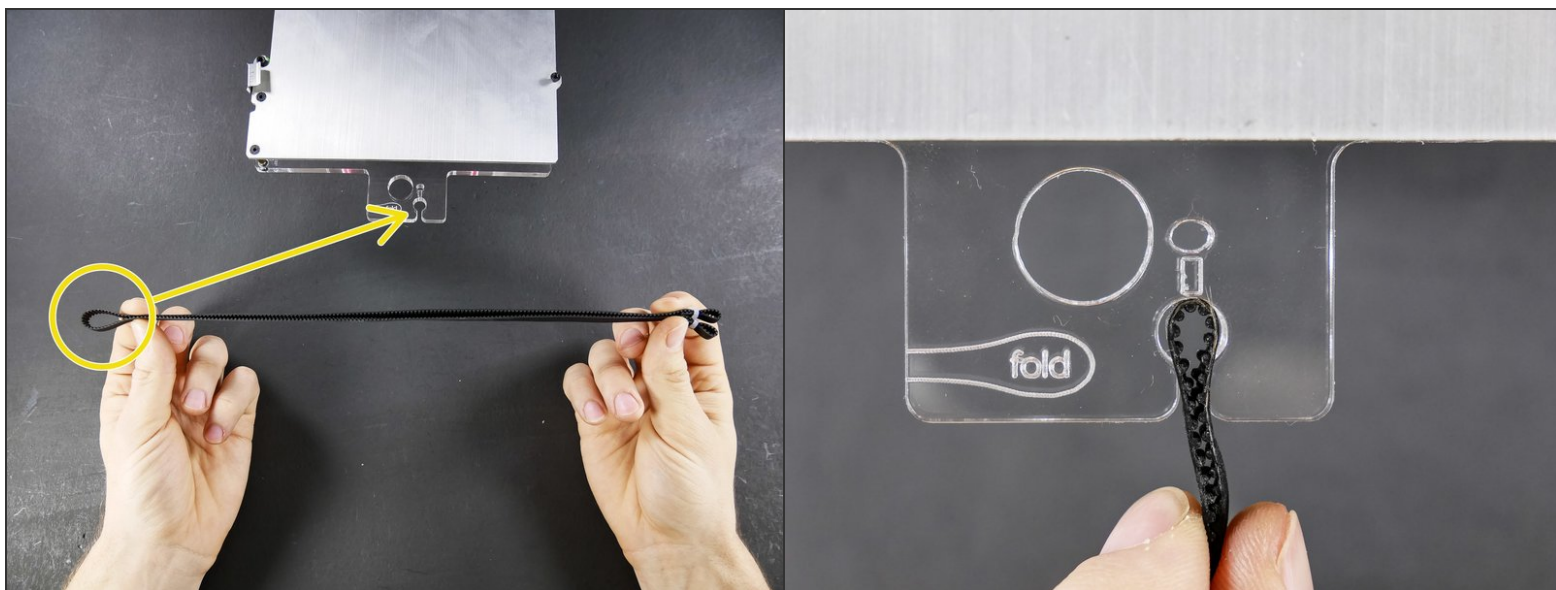
- ► Video: Tighten the Y Belt Zip Tie

Step 37

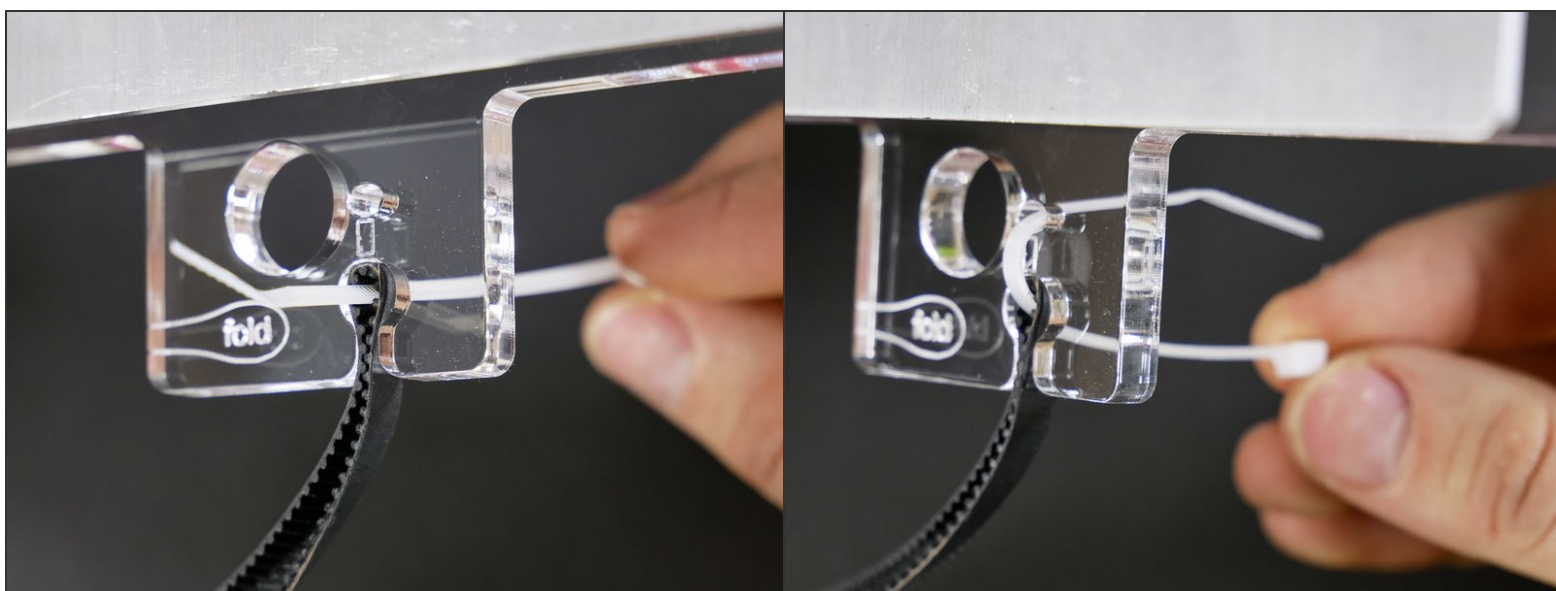


- Fold the belt in the middle.

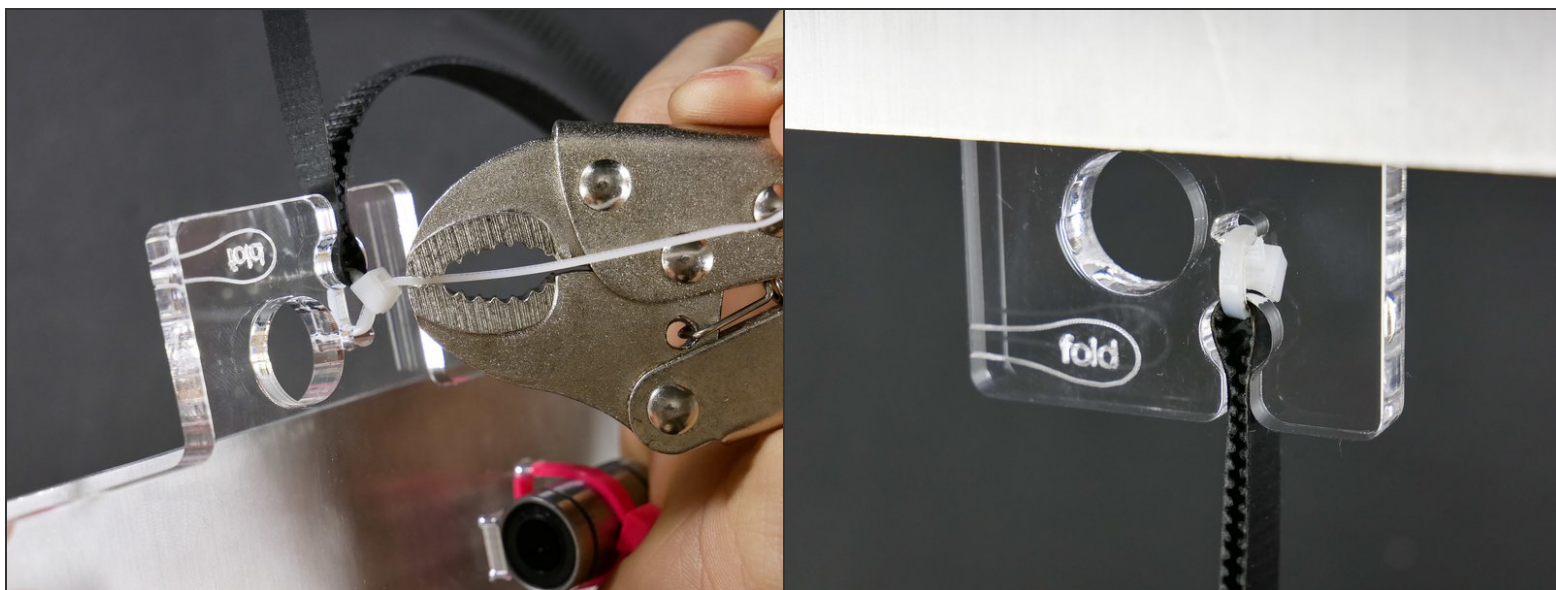
Step 38



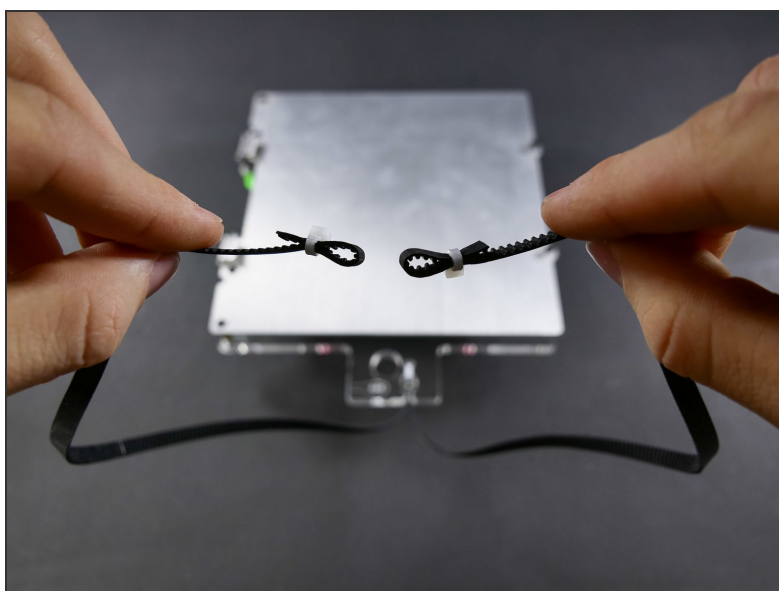
Step 39



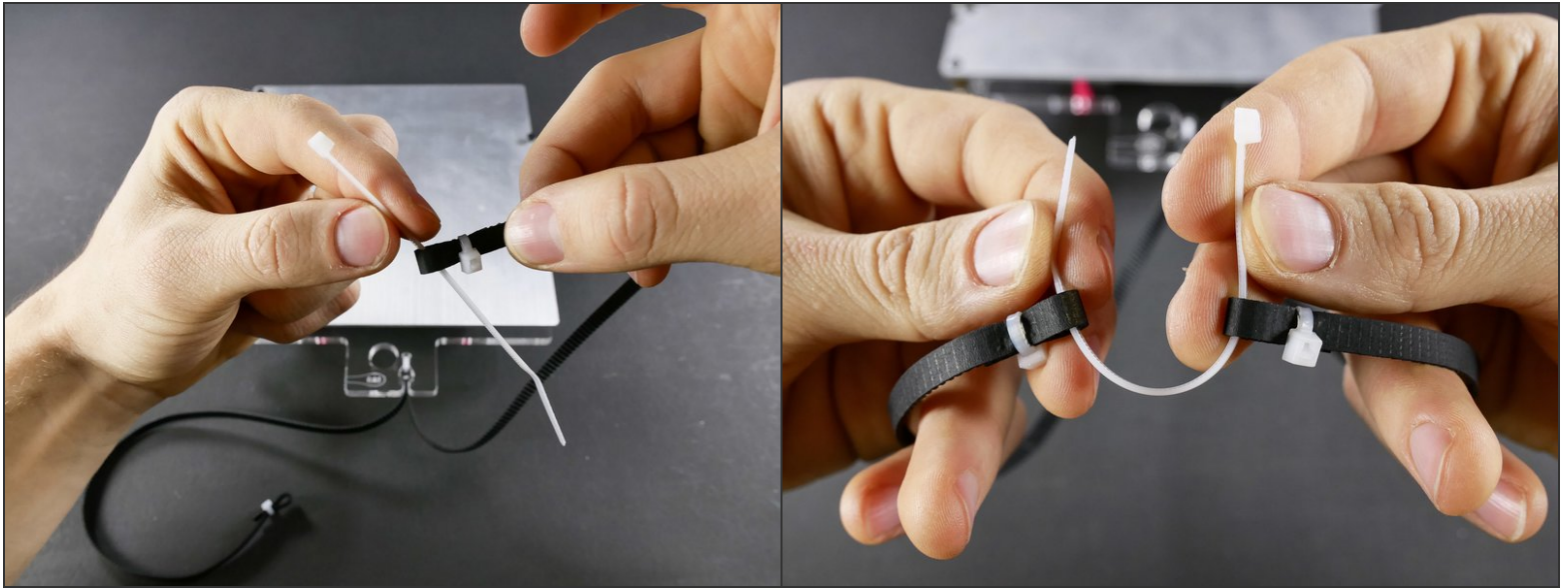
Step 40



Step 41



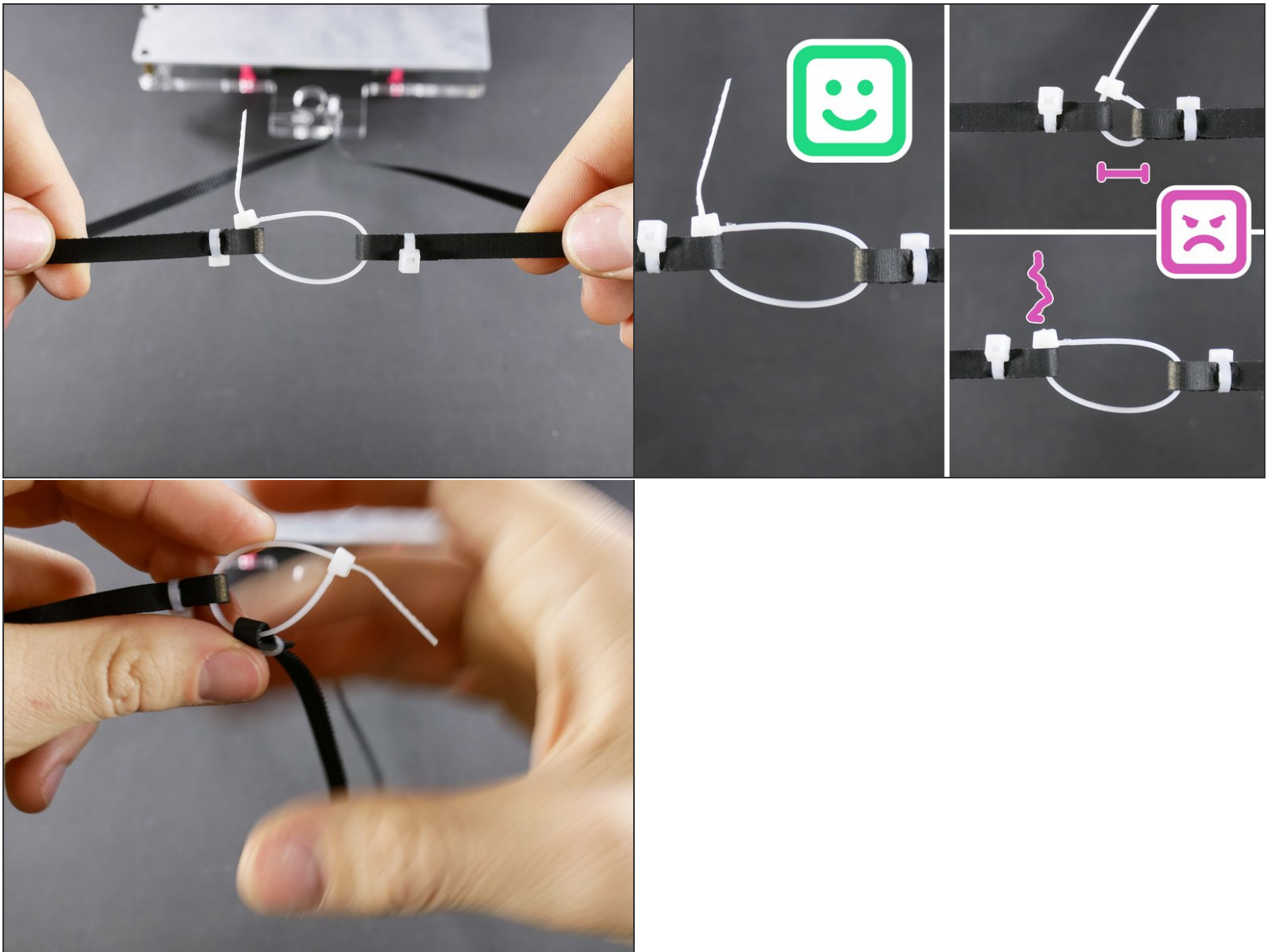
Step 42



⚠ Erratum: Use PINK 5" ZIP TIE

- The rest of the guide, unfortunately, still features white zip tie. Use a PINK one instead.

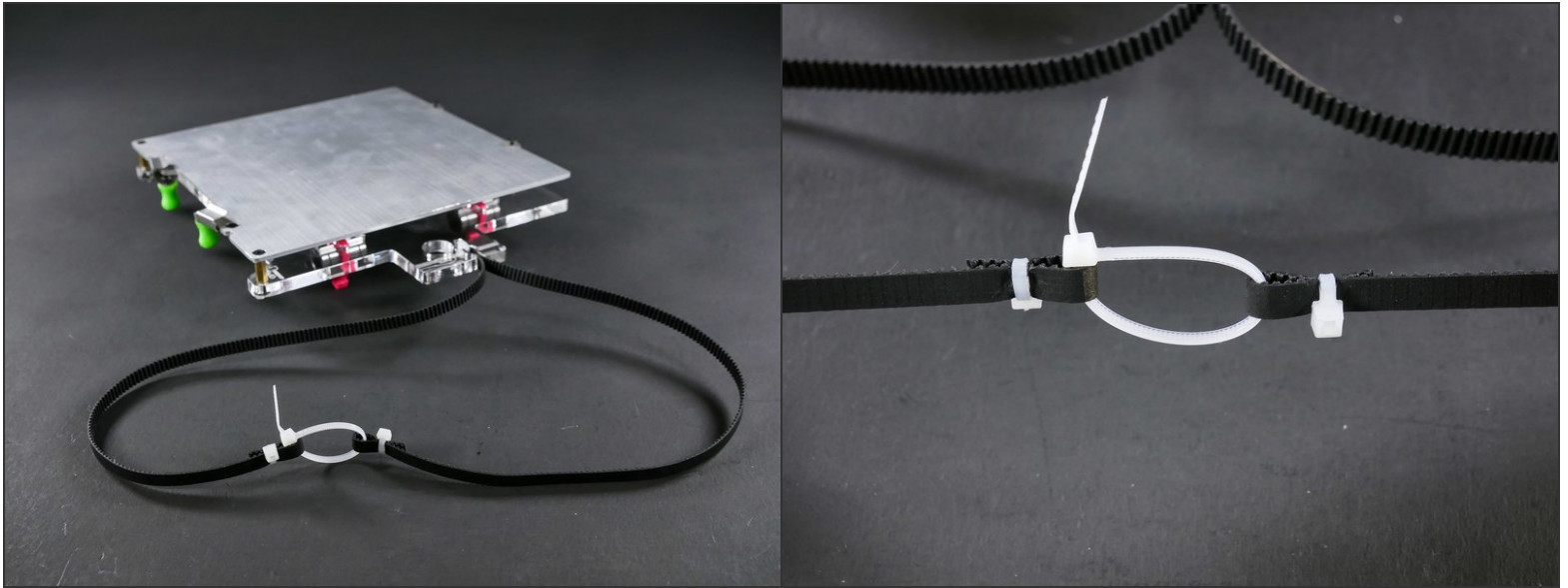
Step 43



⚠ Erratum: Use PINK 5" ZIP TIE

- The rest of the guide, unfortunately, still features white zip tie. Use a PINK one instead.

Step 44 — It's done!



- Happy you should be.