



## 01. Y Motor Bracket (makers)



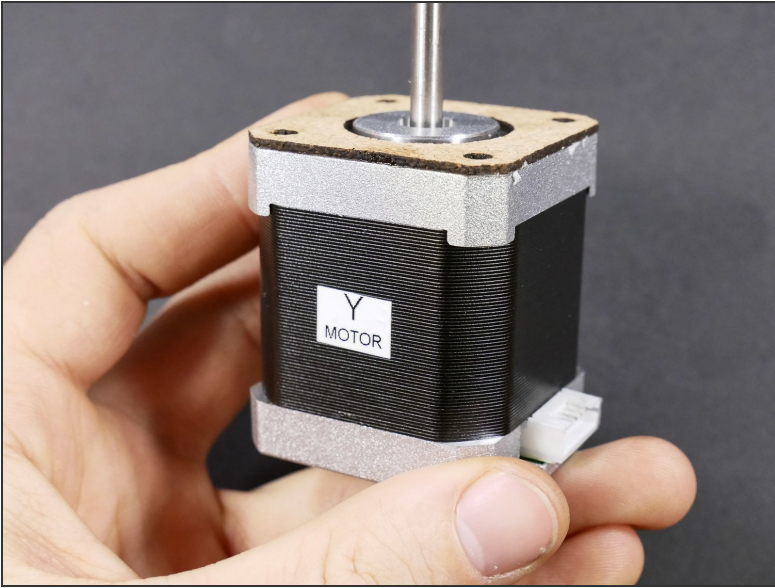
**TOOLS:**

- [2mm Hex Key \(≈ Allen Key\)](#) (1)
- [2.5mm Hex Key](#) (1)

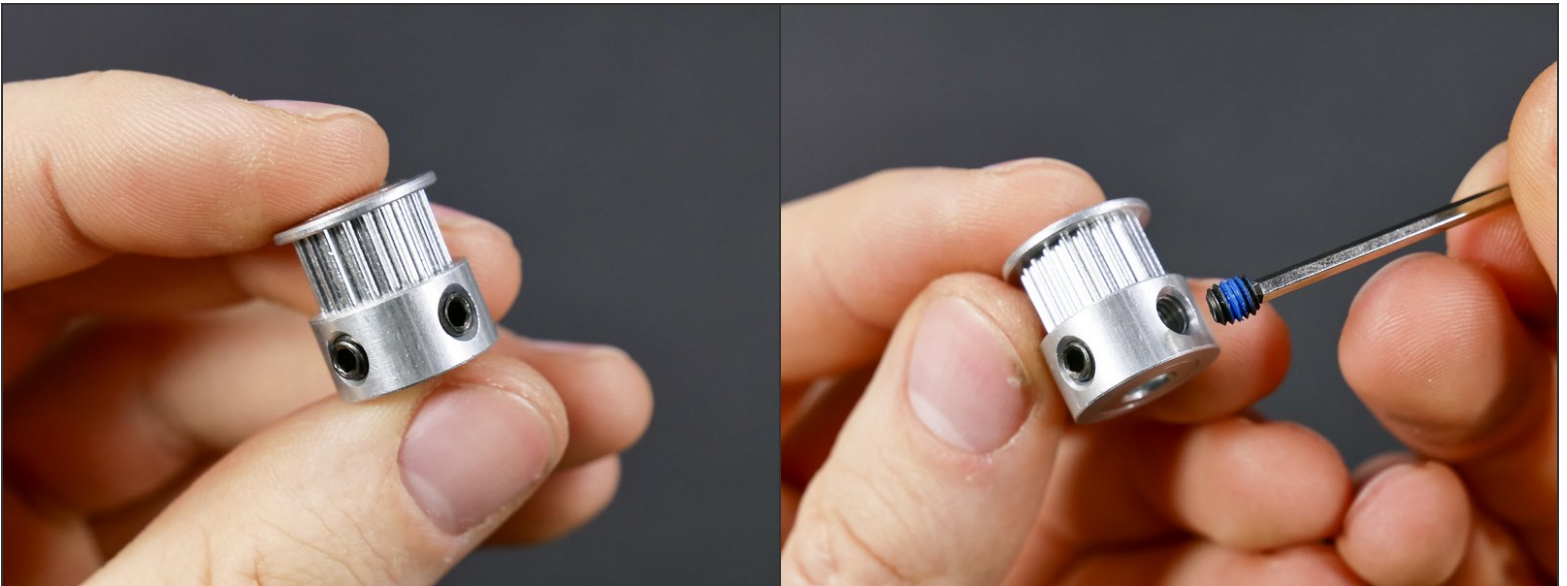
**PARTS:**

- [Pulley](#) (1)
- ['Corked' Y Motor](#) (1)
- [M3x12 Socket Head Screw](#) (4)
- [M3 Serrated Washer](#) (4)
- [Y Bracket](#) (1)

## Step 1 — ↳ Install the Y Pulley



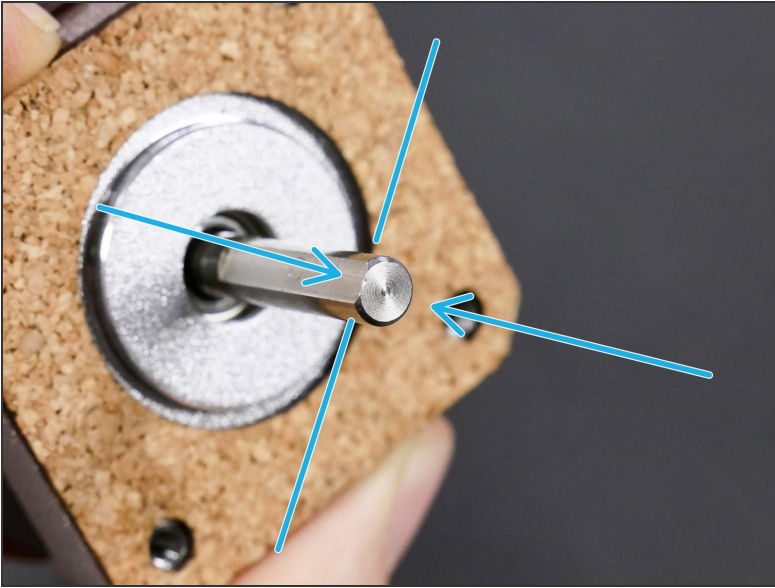
## Step 2



- i** The *set screws* in the pulleys have nylon locking patches pre-applied to resist loosening with vibrations. Therefore, we do not need to use threadlock.

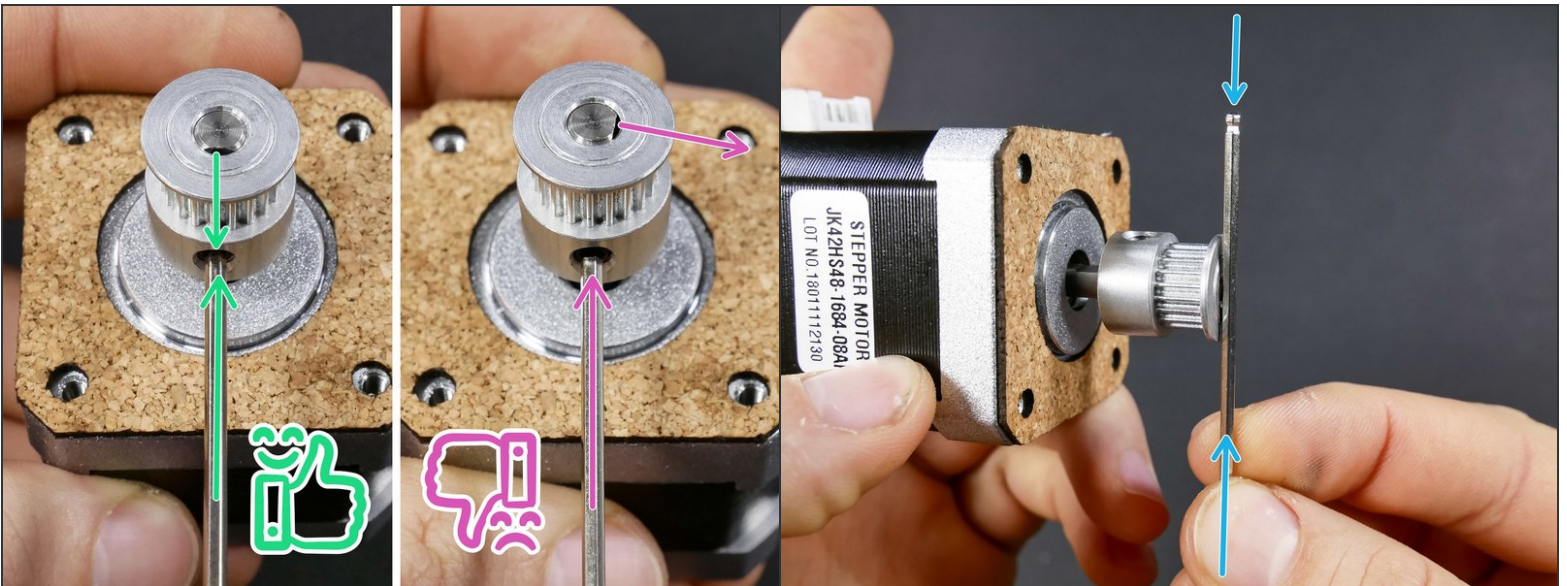


### Step 3



- The motor shaft has one **flat** side.

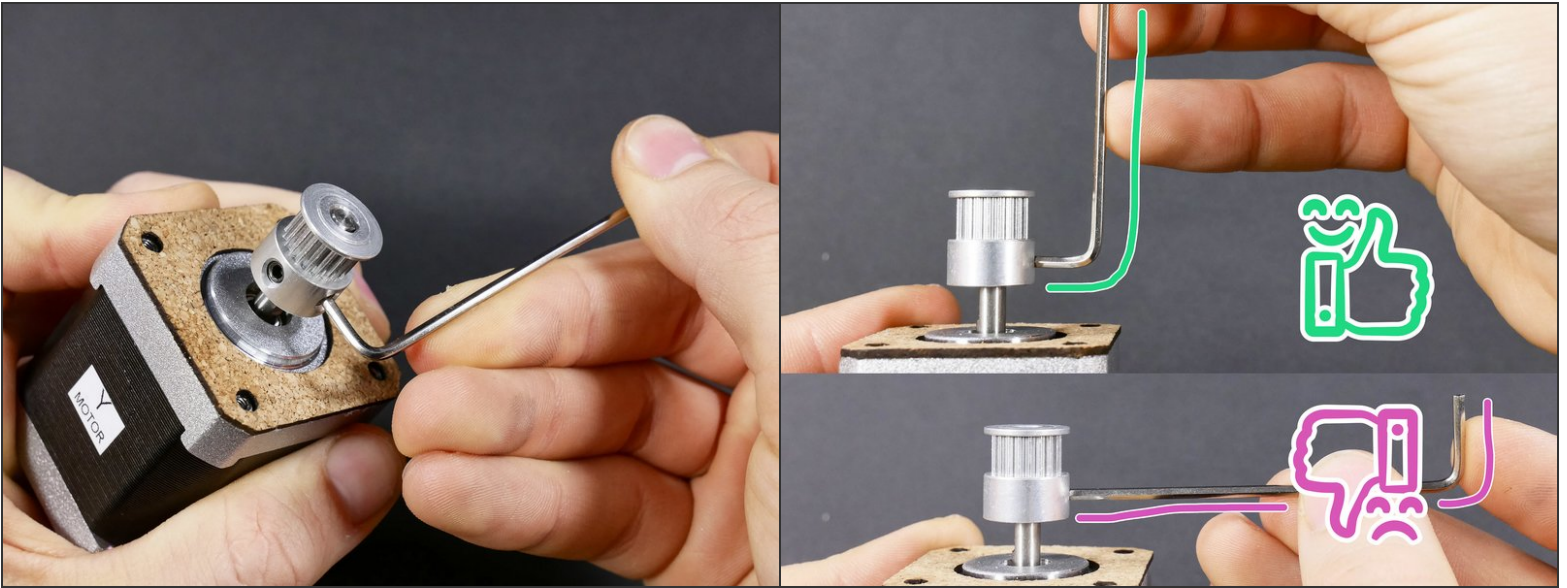
### Step 4



⚠ Tighten the longer set screw against the **FLAT** side of the motor shaft.

- Make the top of the motor shaft flush with the top of the pulley.

## Step 5



☑ Tighten the set screws well.

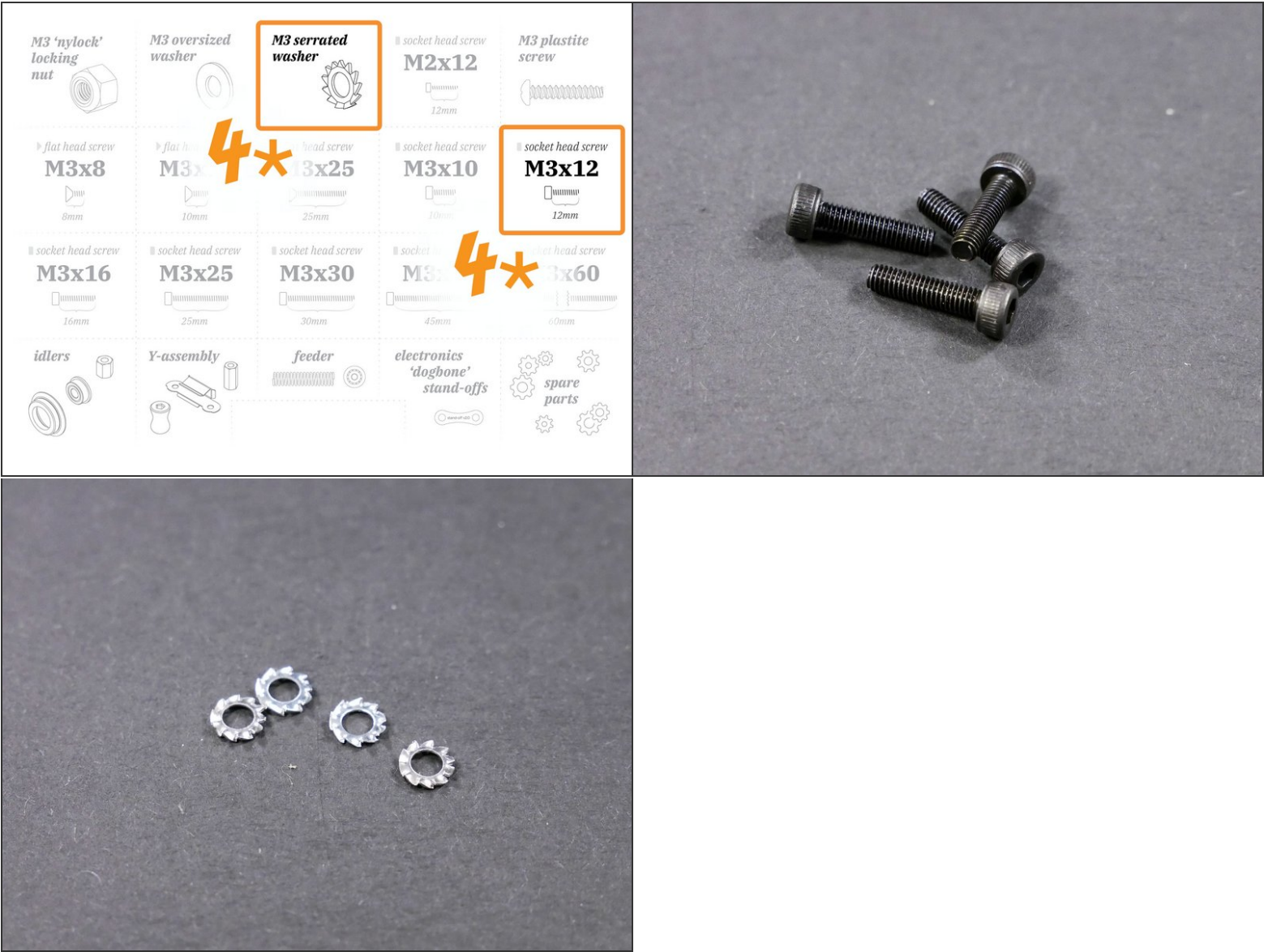
⚠ Tightening well does not mean tightening with unrestrained force. You can strip the set screw threads or its hex head if you use too much force.

## Step 6





Step 7 — ↪ Install the Y Motor

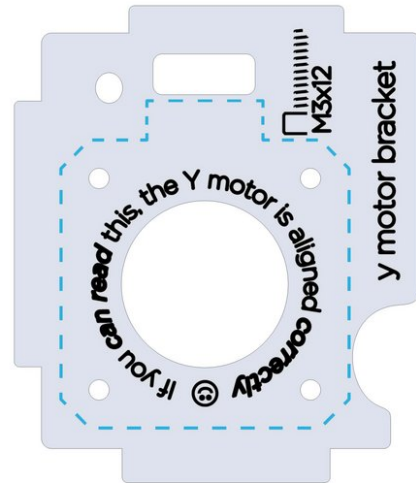
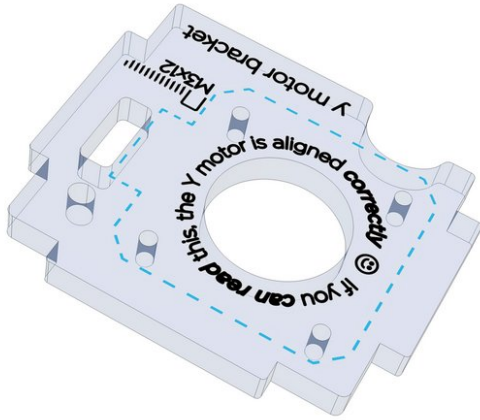



● M3x12

## Step 8



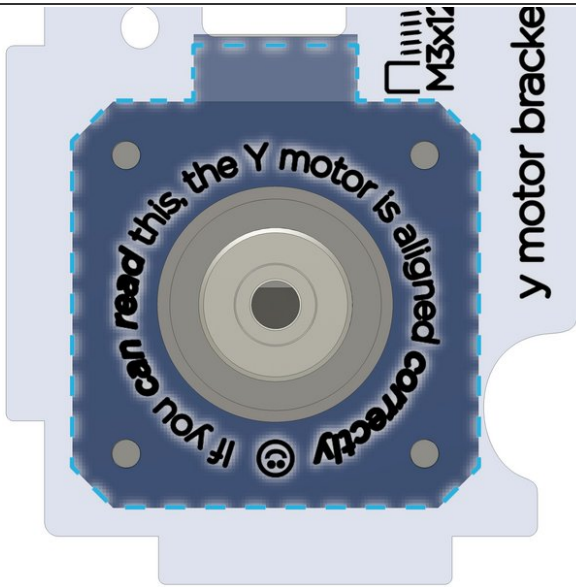
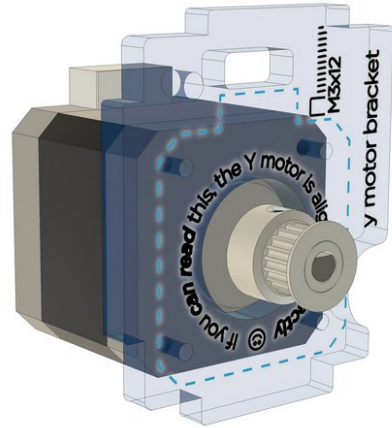
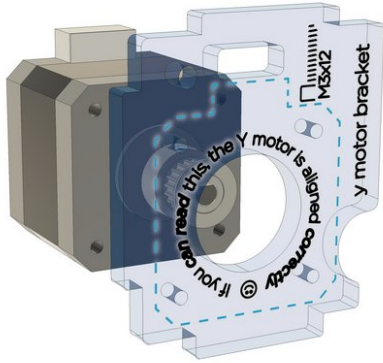
## Step 9



 This piece is packed in together with the other acrylic parts in the big 'pizza' box.



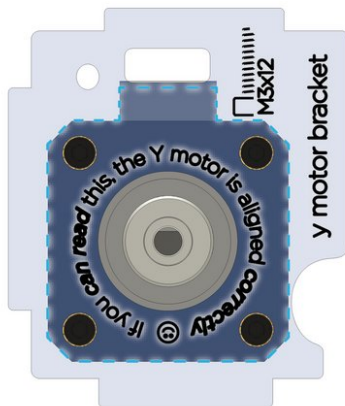
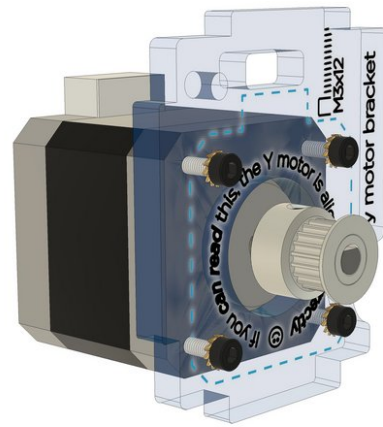
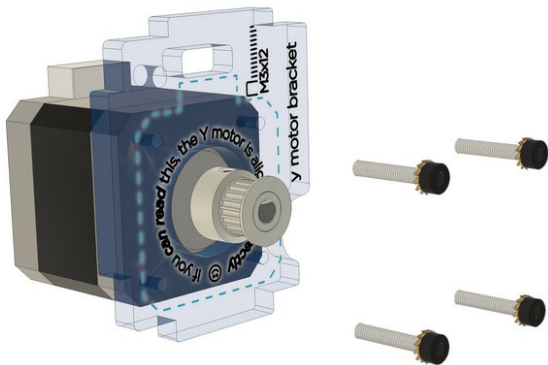
## Step 10



⚠ Make sure the motor connector aligns with the etching.

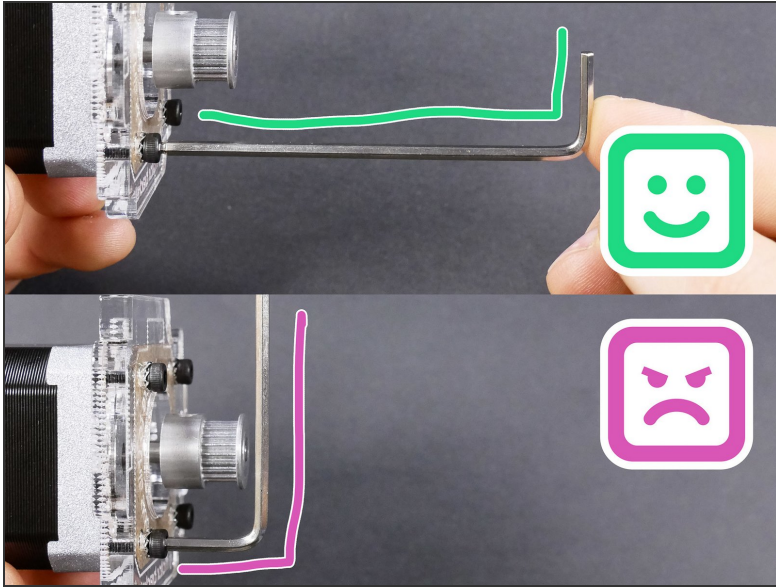
⚠ Make sure you can read the inscription :-)

## Step 11



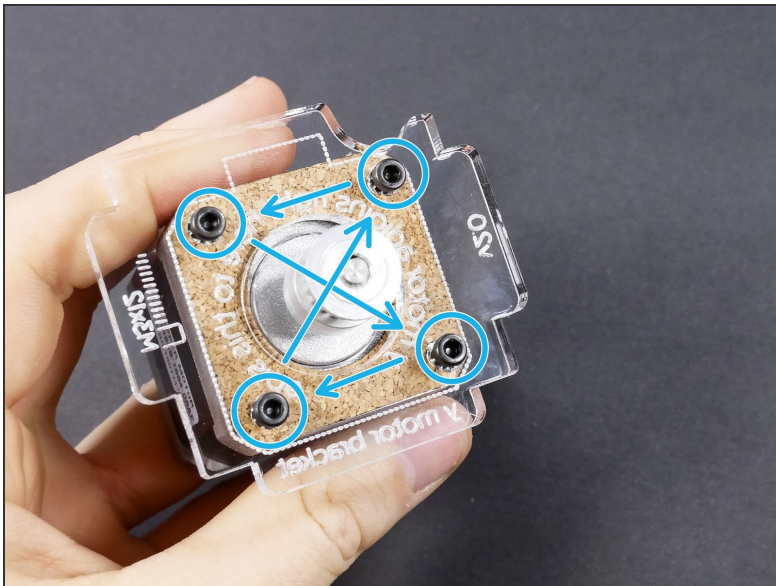
- M3x12

## Step 12



⚠ When tightening against plastic (frame, printed parts...), always hold the **short** side of the hex key to avoid over-tightening and damaging the part.

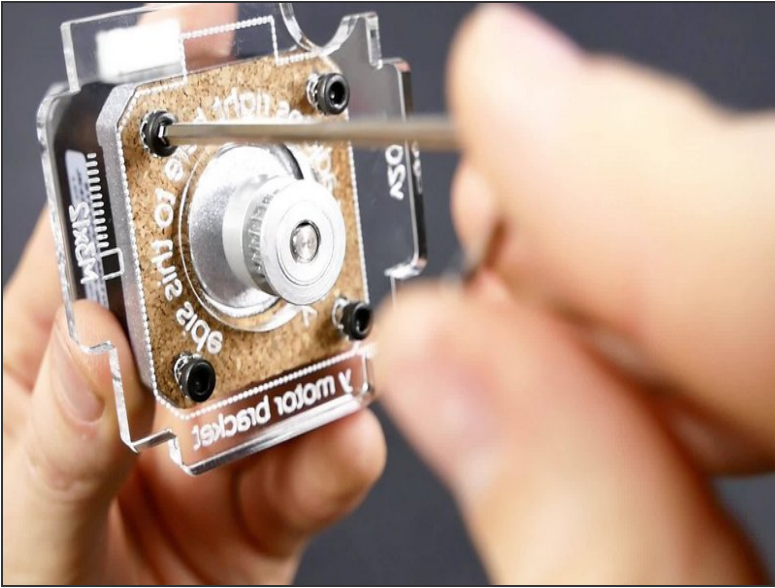
## Step 13 — ✂ Technique: Cross-Tightening



- ⓘ Avoid alignment issues by tightening the screws **little by little in a diagonal pattern**.
- ⓘ This is called "cross-tightening", and you should do it *every time*\* you have more than one screw to tighten.
  - \* *even when you're not building a JellyBOX*
  - *Note: the picture features an older version of the Y bracket. The technique remains.*

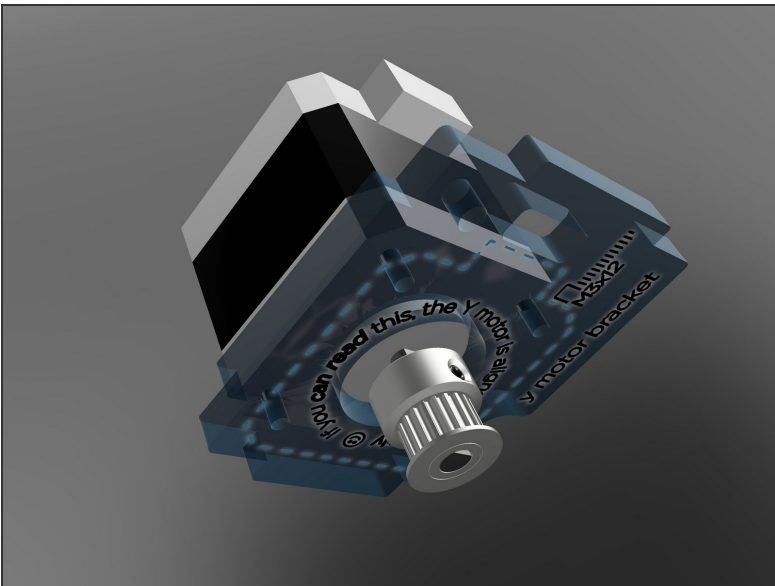


## Step 14 — ► Video: Cross-Tightening (20s)



- ► Video: Cross-Tightening (20s)
- *Note: the picture features an older version of the Y bracket. The technique remains.*

## Step 15 — It's done!



- The Y motor bracket is assembled. All the naysayers shall be silent now. You are doing this.