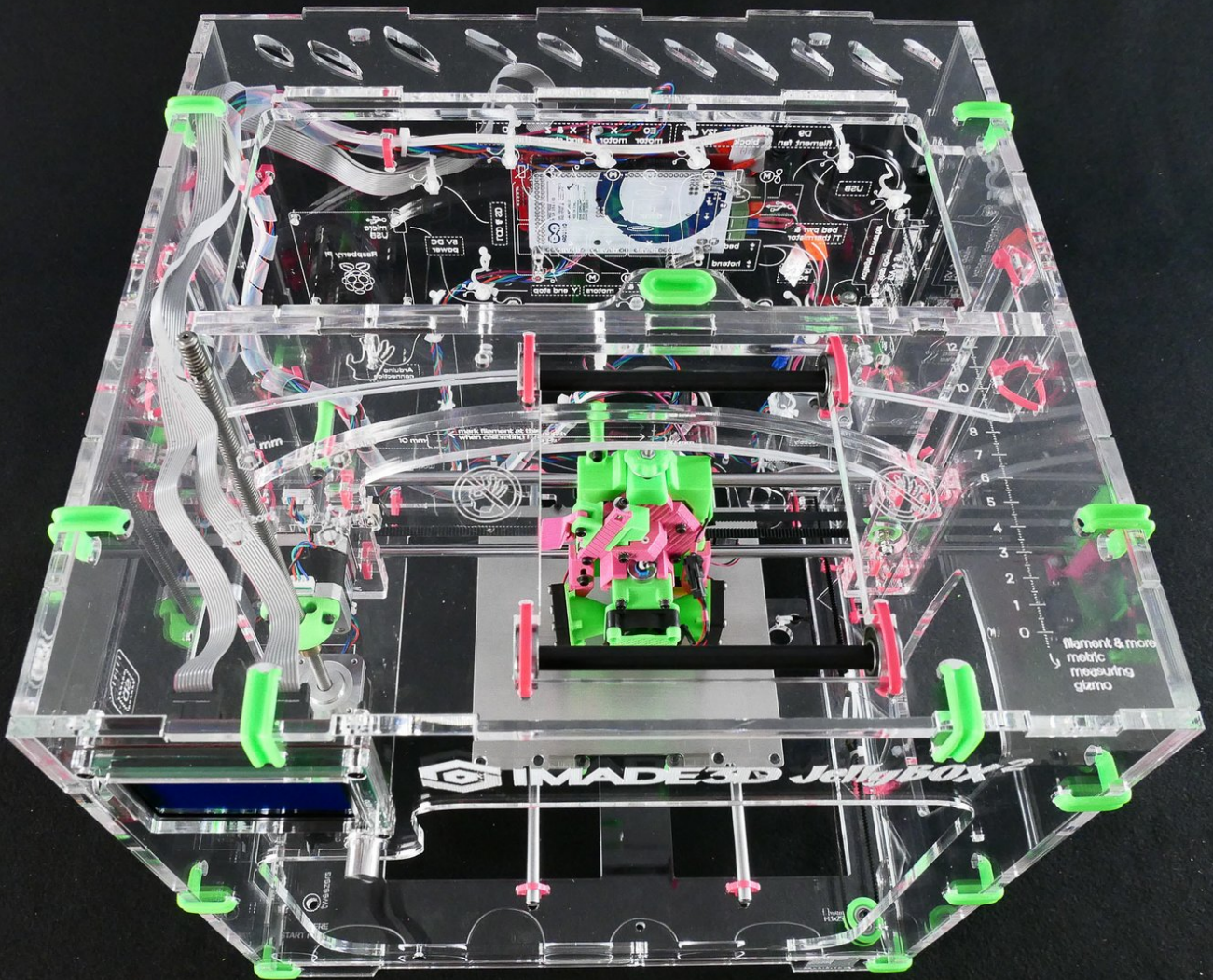




Top

Top of the frame

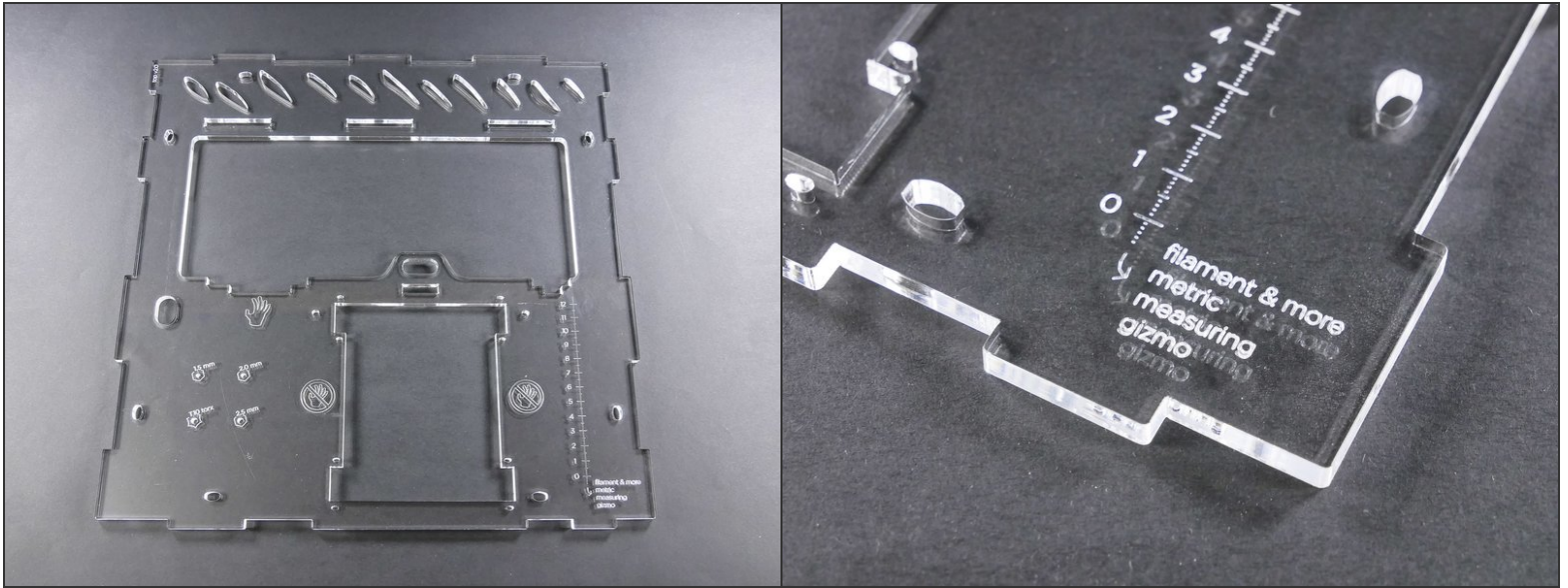


INTRODUCTION

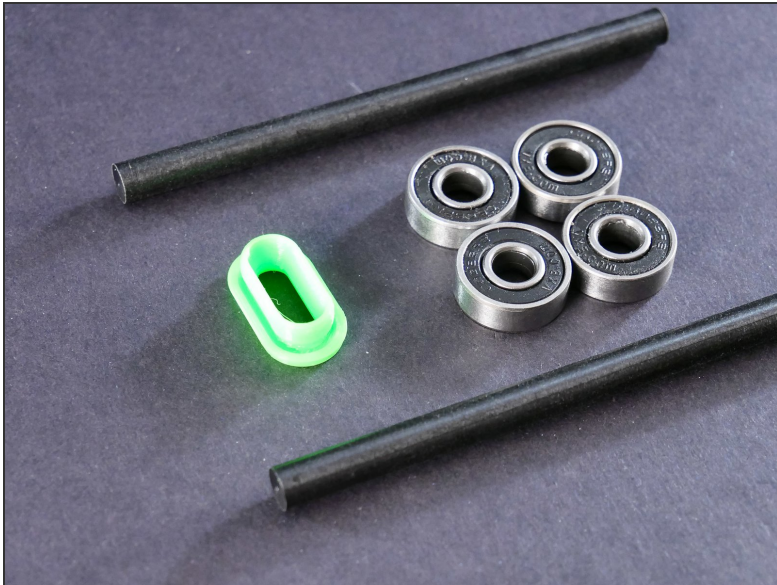
Not the guide you are looking for?

Go back to the [← Makers Kit Build Flow.](#)

Step 1 — ↳ Prepare the Top



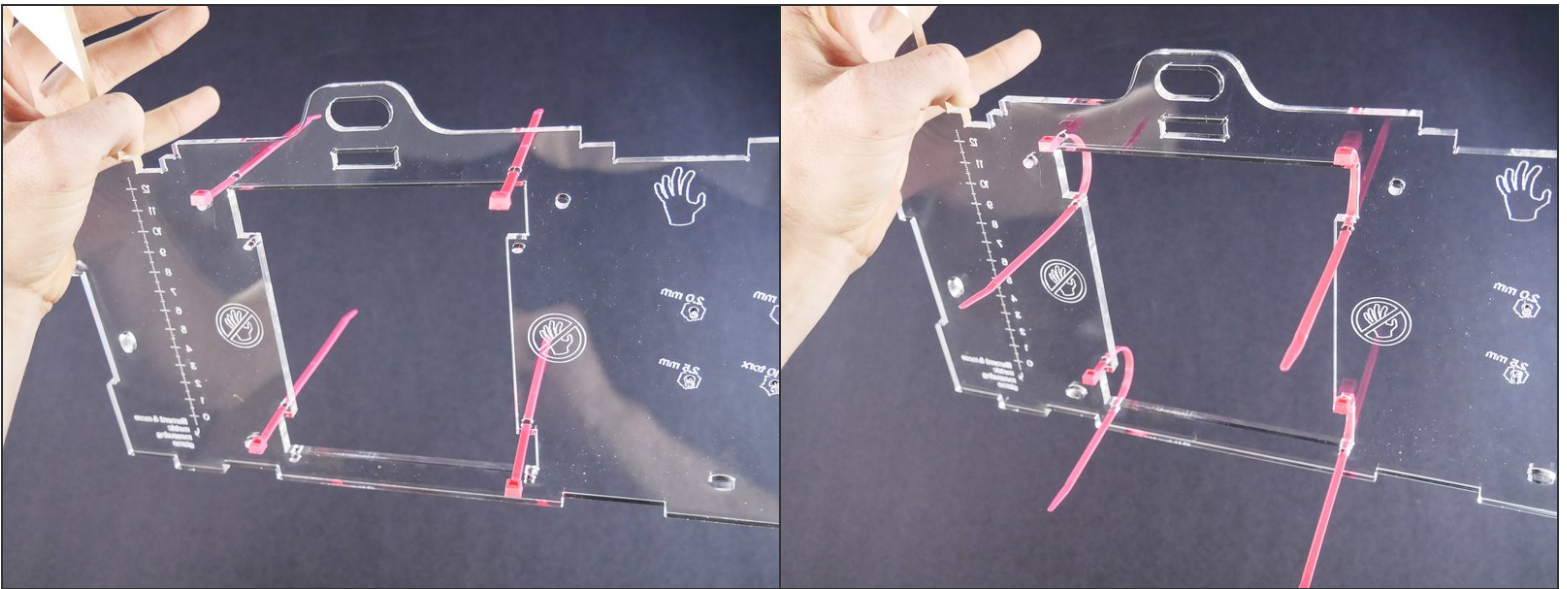
Step 2



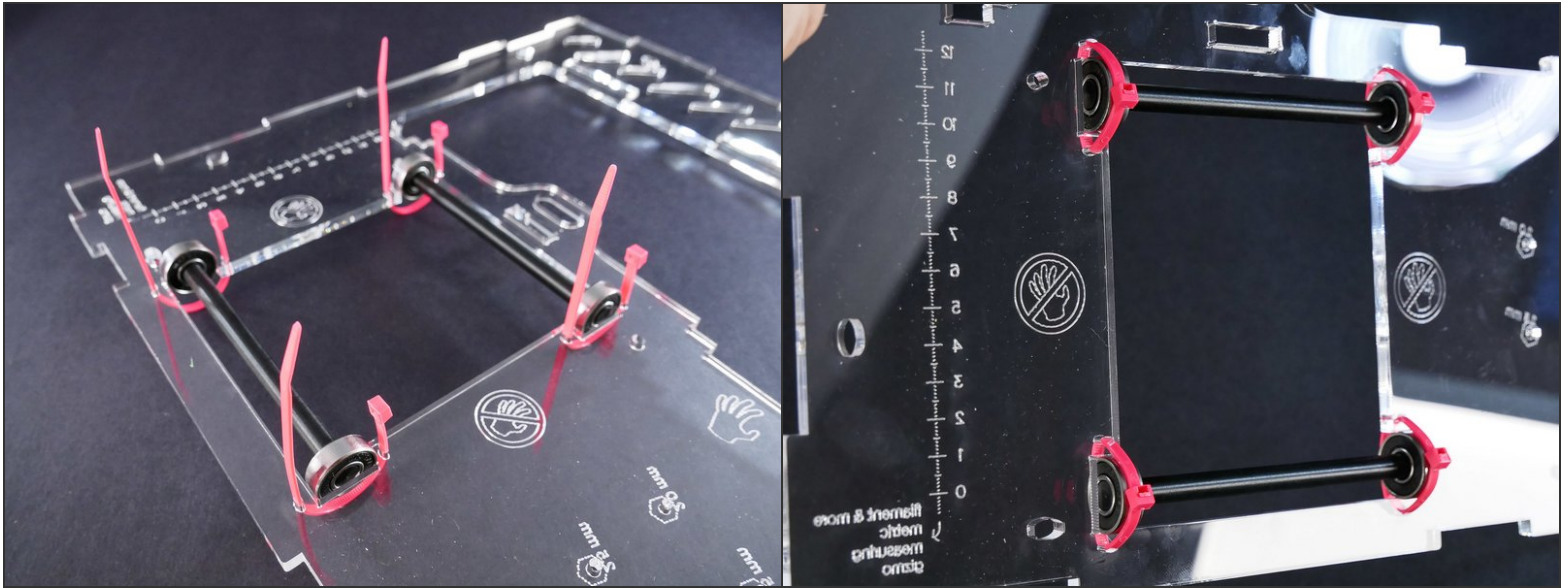
Step 3



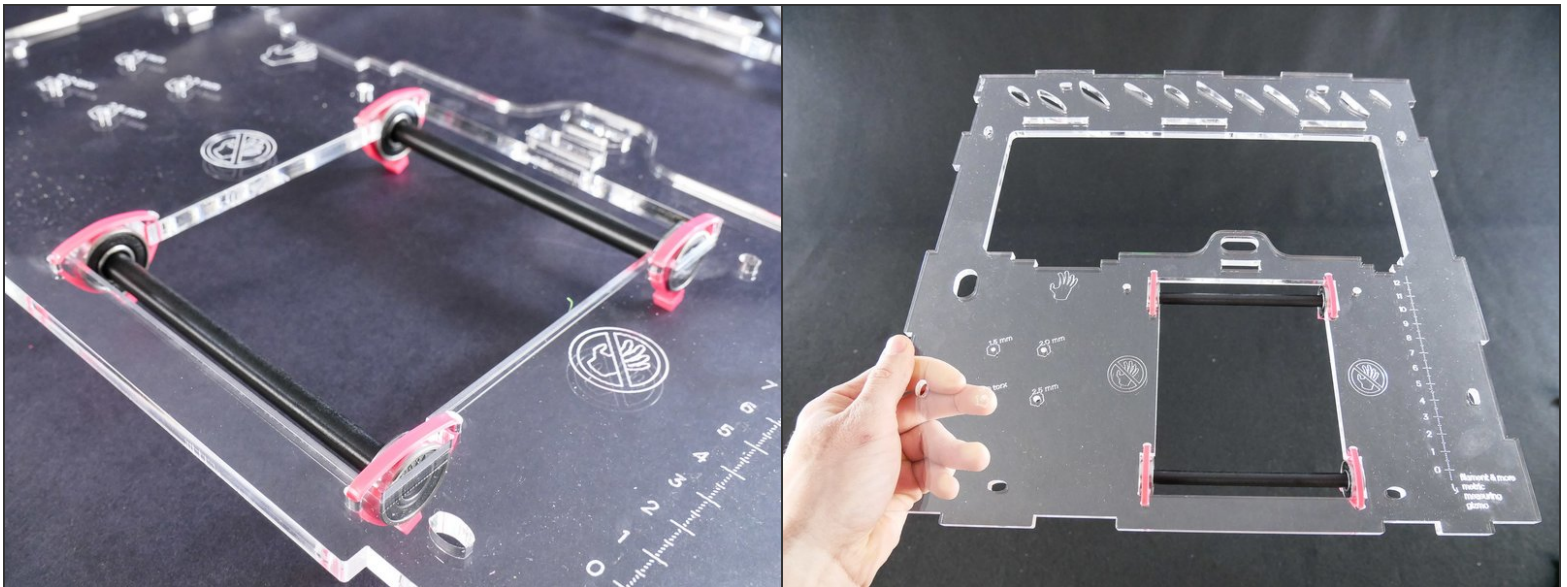
Step 4



Step 5



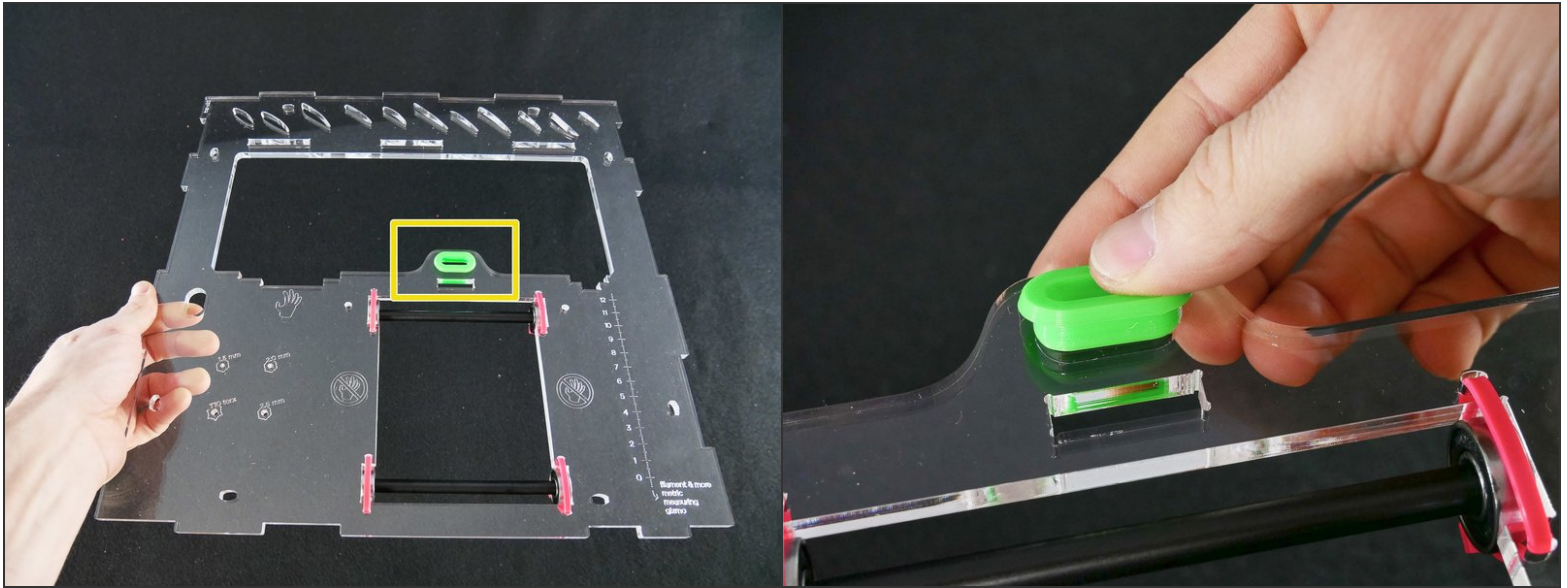
Step 6



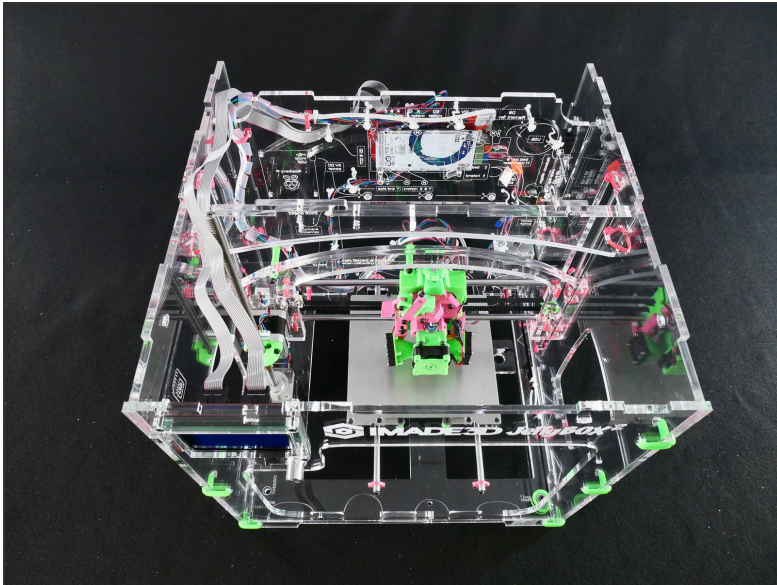
- Turn 180° once more. This is the *normal* orientation (you can read the etchings).

☑ Note that the spool rollers are **hanging underneath** the Top part.

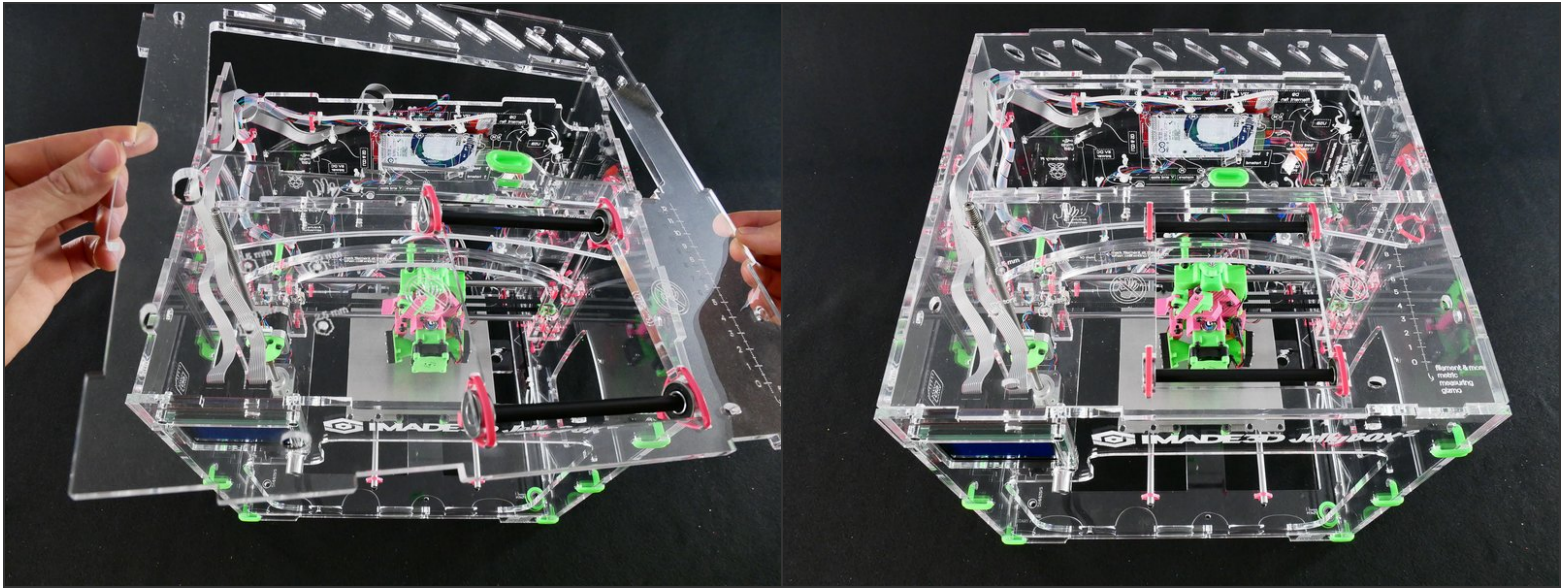
Step 7



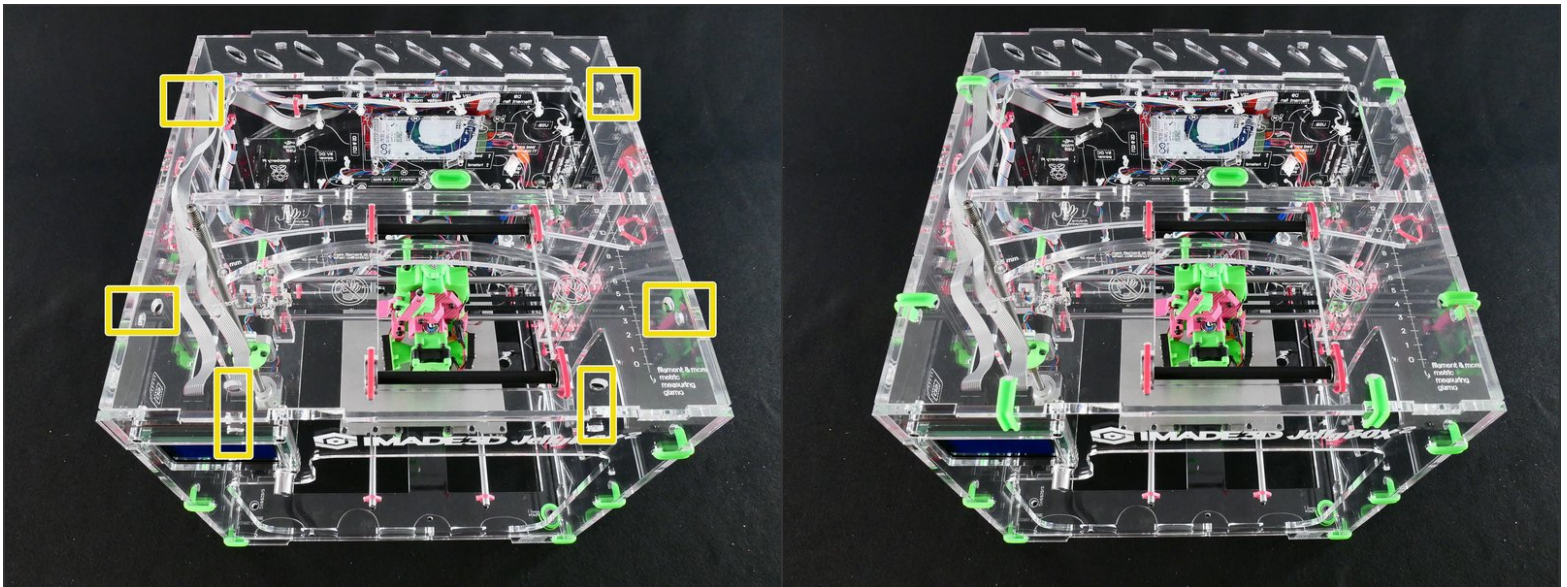
Step 8 — ↳ Install the Top



Step 9



Step 10



What's Next?

Get back to the [← Makers Kit Build Flow](#) and continue with the next guide.