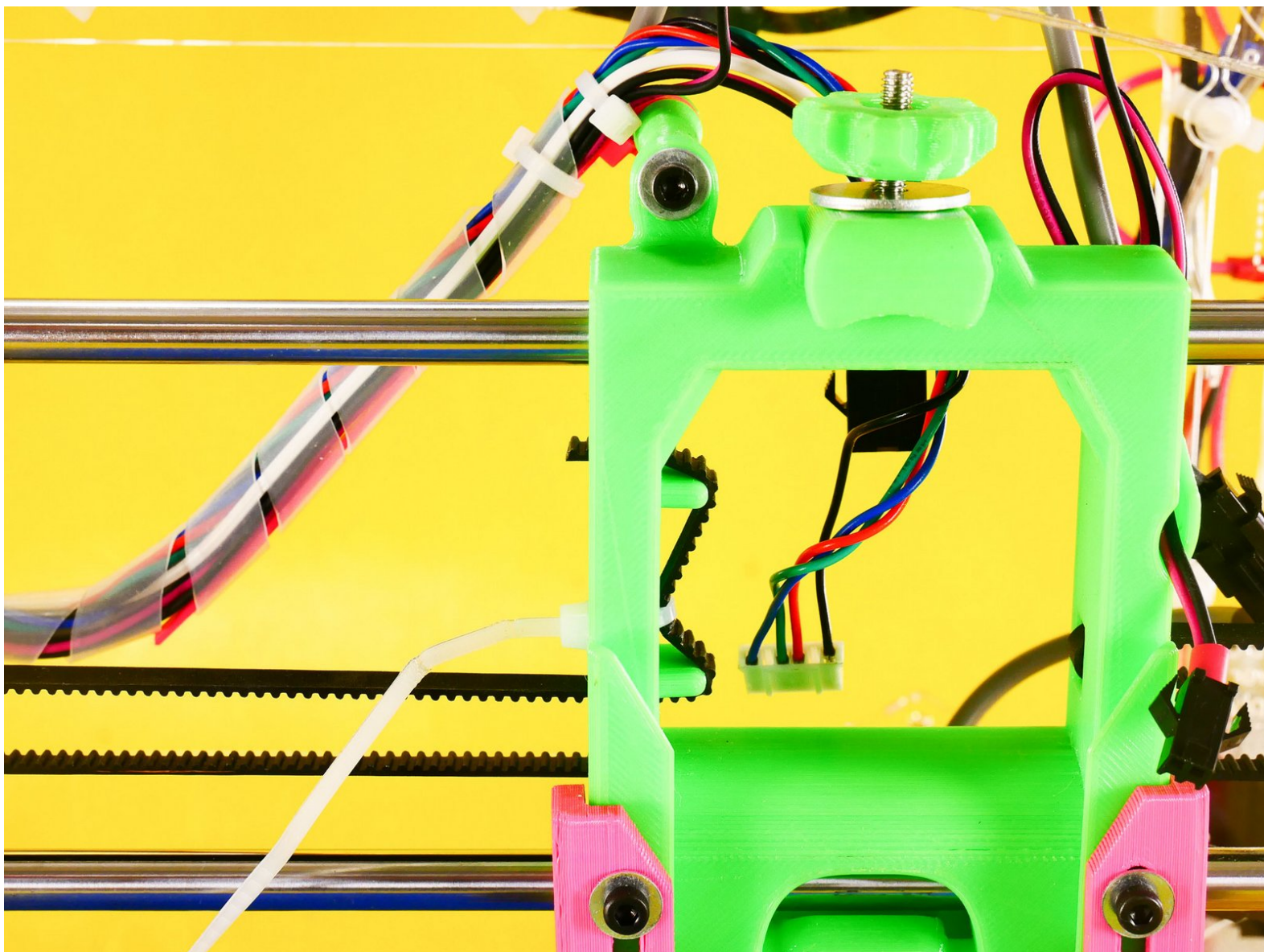




# Tighten Your Belts

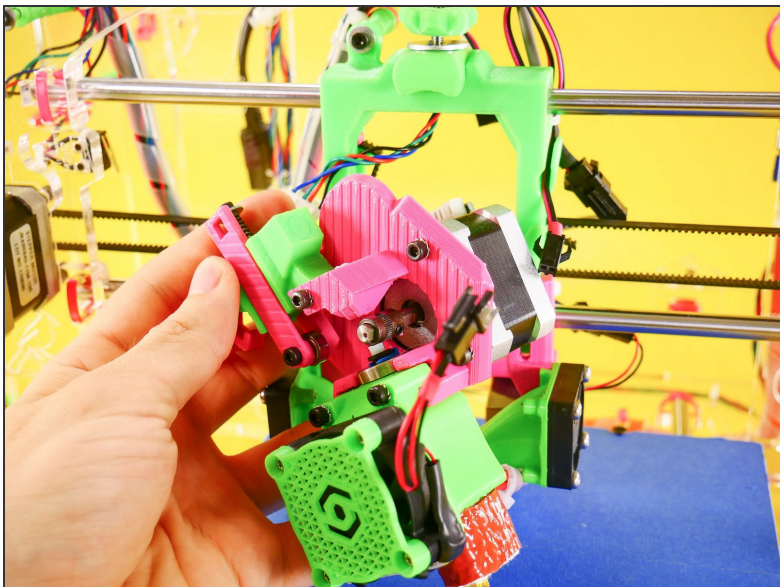


# INTRODUCTION

Not the guide you are looking for?

Go back to the [← Makers Kit Build Flow.](#)

## Step 1 — ↳ Tighten the X Belt



- Remove the extruder

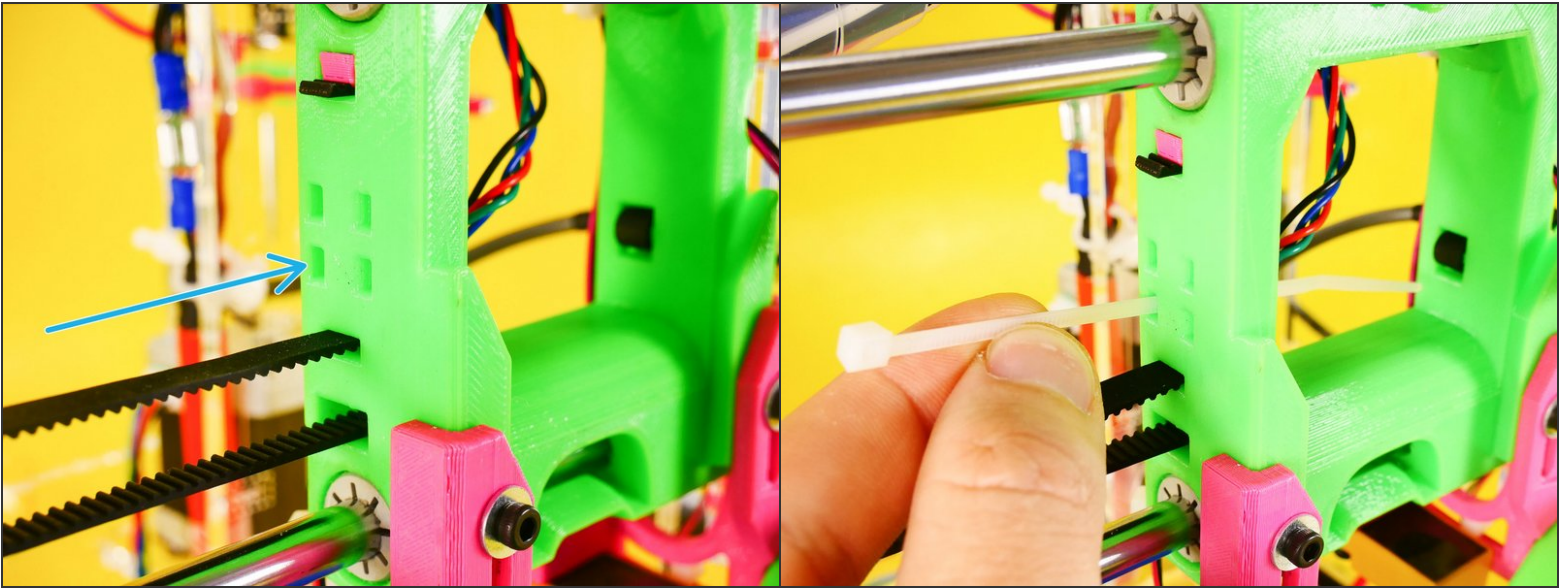
## Step 2



- Insert wisdom here.

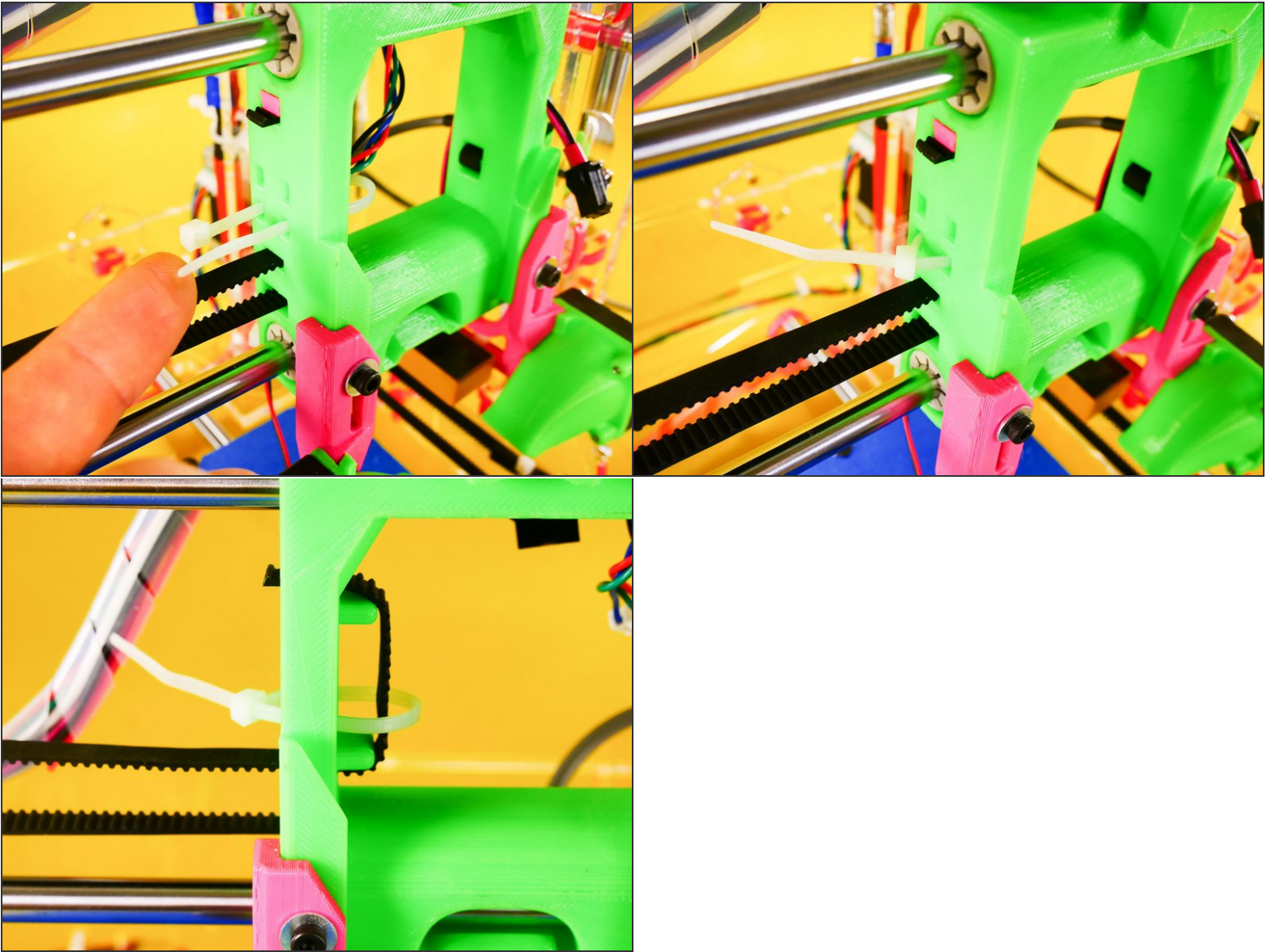


### Step 3

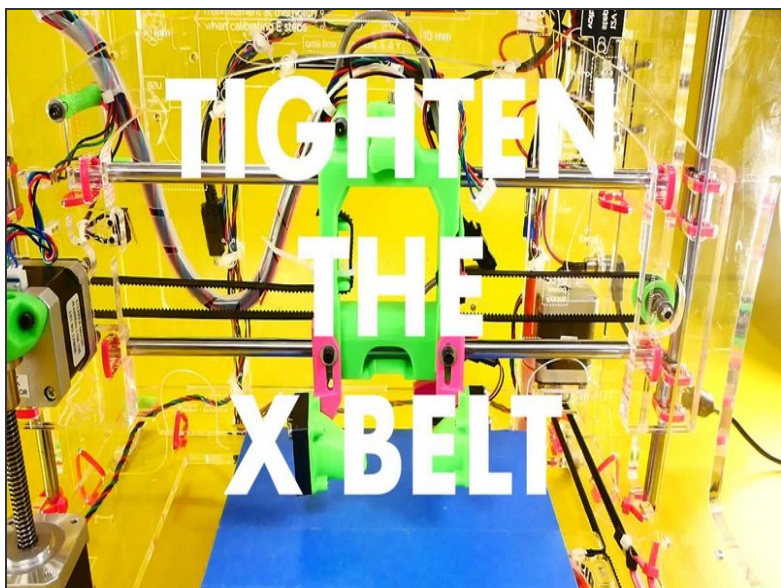


- Insert wisdom here.

## Step 4



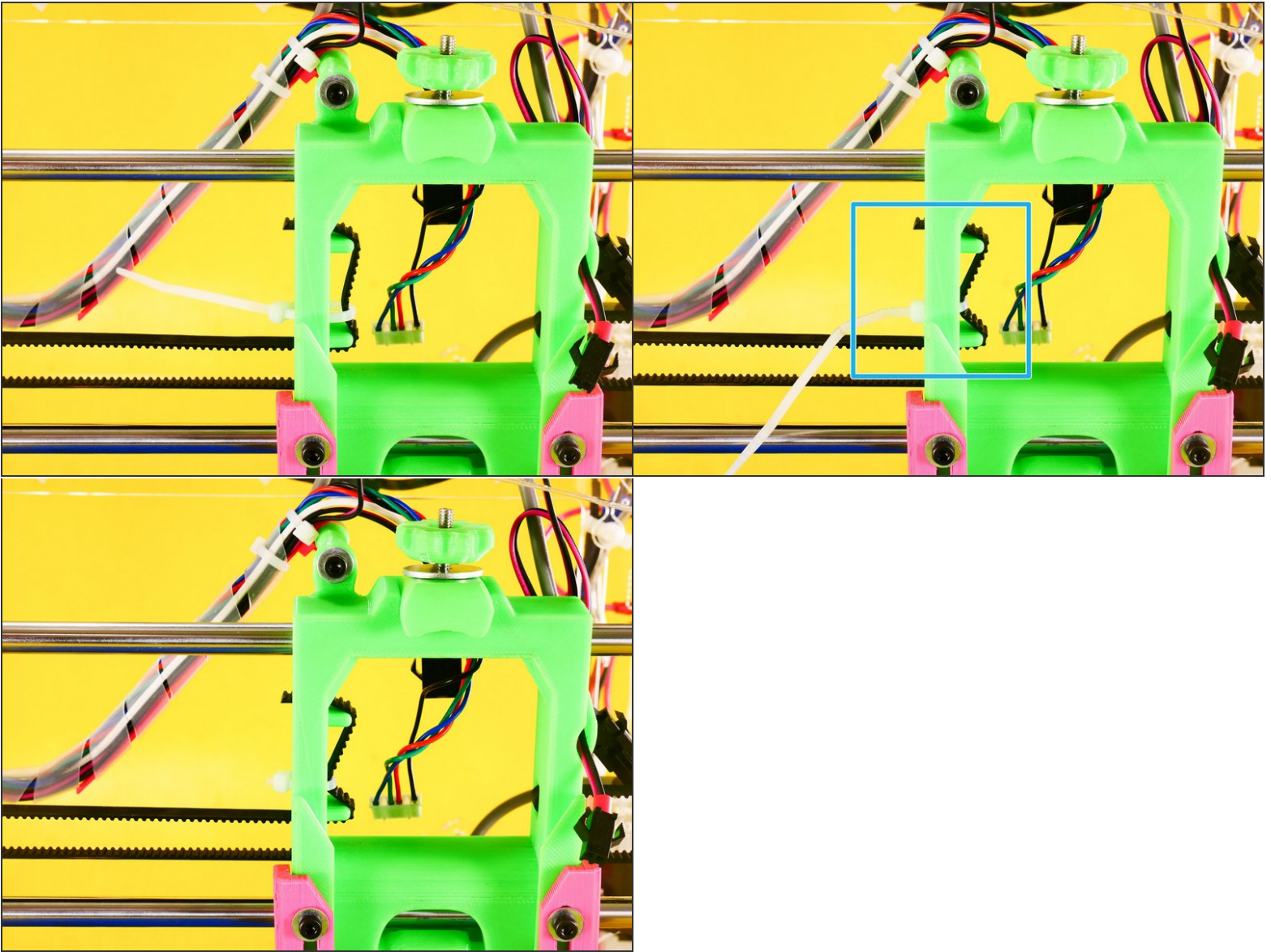
- Insert wisdom here.

**Step 5 — ► Video: Tighten the X Belt (30s)**

- ► Video: Tighten the X Belt (30s)

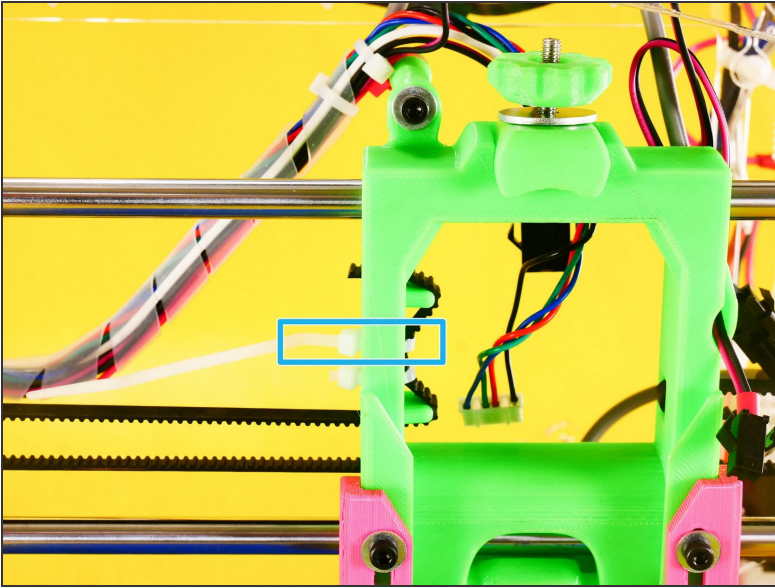


## Step 6



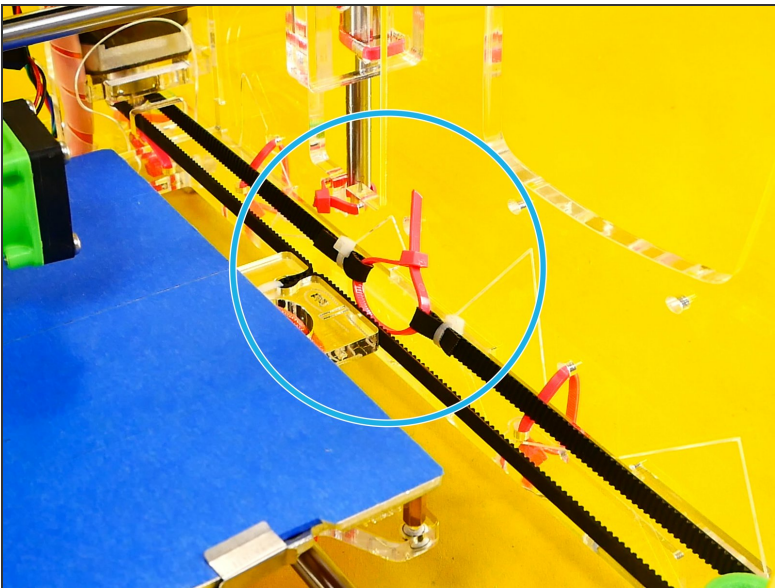
- Insert wisdom here.

## Step 7



- *IF* you cannot achieve moderate tightness (watch the included video) with one zip tie, you can add a 2nd one.

## Step 8 — ↳ Tighten the Y Belt



- Tighten the Y belt zip tie just like you just have tightened the X belt zip tie.



**Step 9 — ► Video: Tighten the Y Belt (30s)**

- ► Video: Tighten the Y Belt (30s)

**Step 10 — ► Video: Tighten the Y Belt**

- ► Video: Tighten the Y Belt

## What's Next?

Get back to the [◀ Makers Kit Build Flow](#) and continue with the next guide.