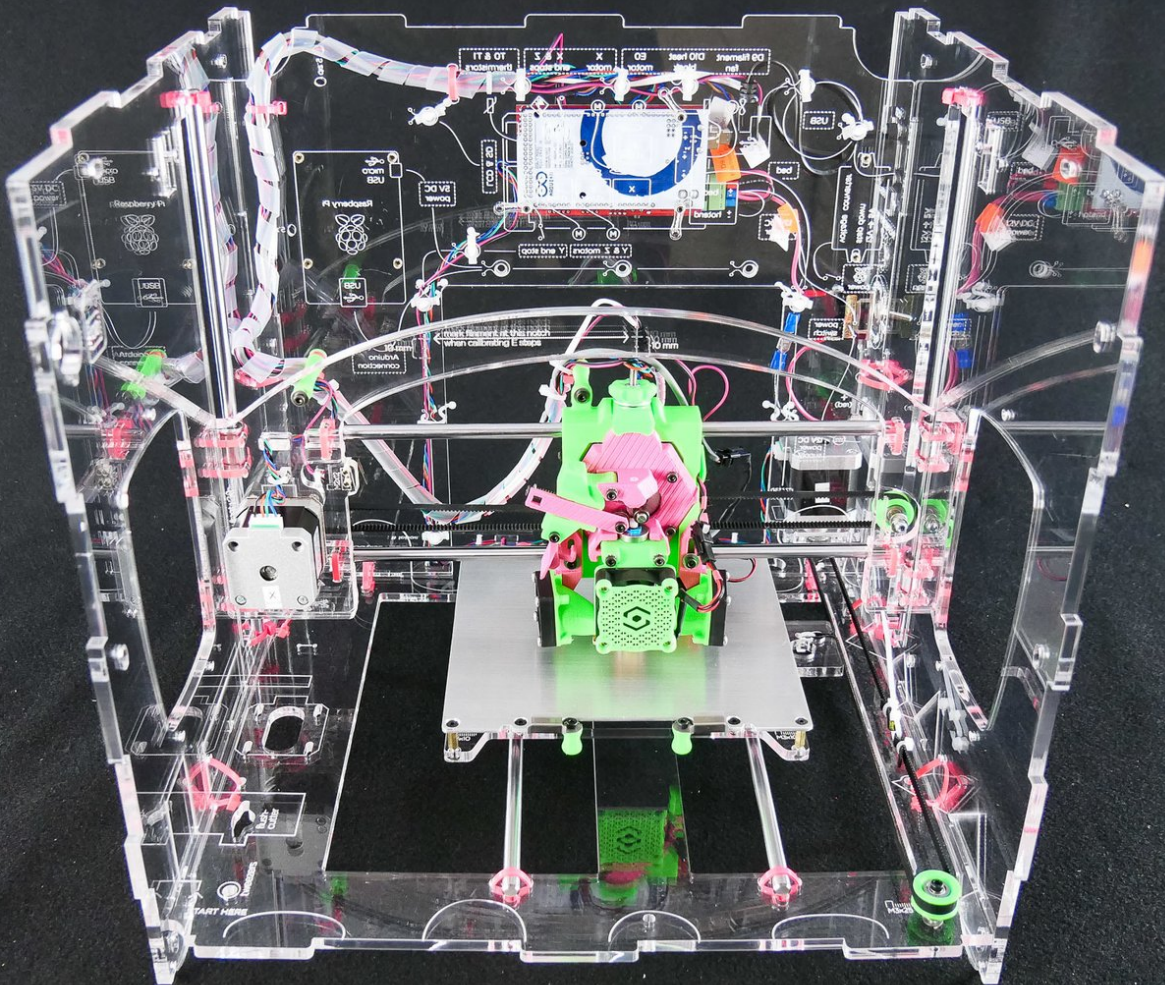




# Install the X Assembly

Install the X Assembly #jb2-mkr

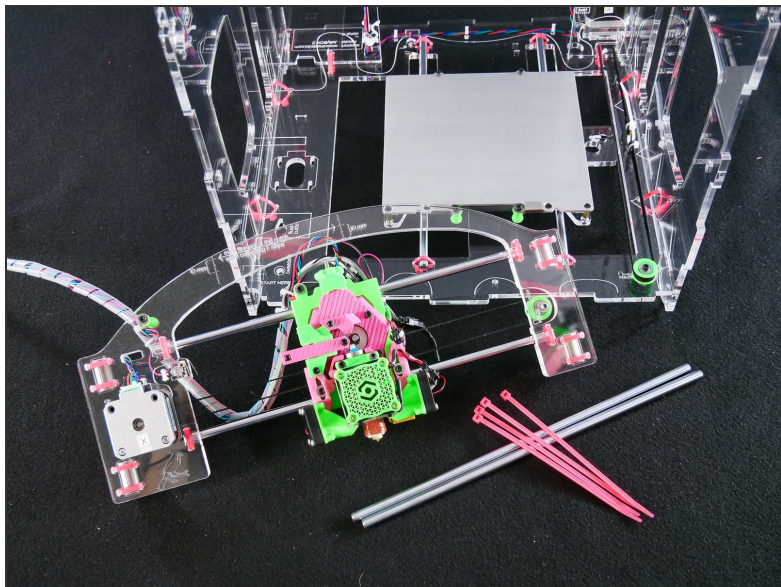


# INTRODUCTION

Not the guide you are looking for?

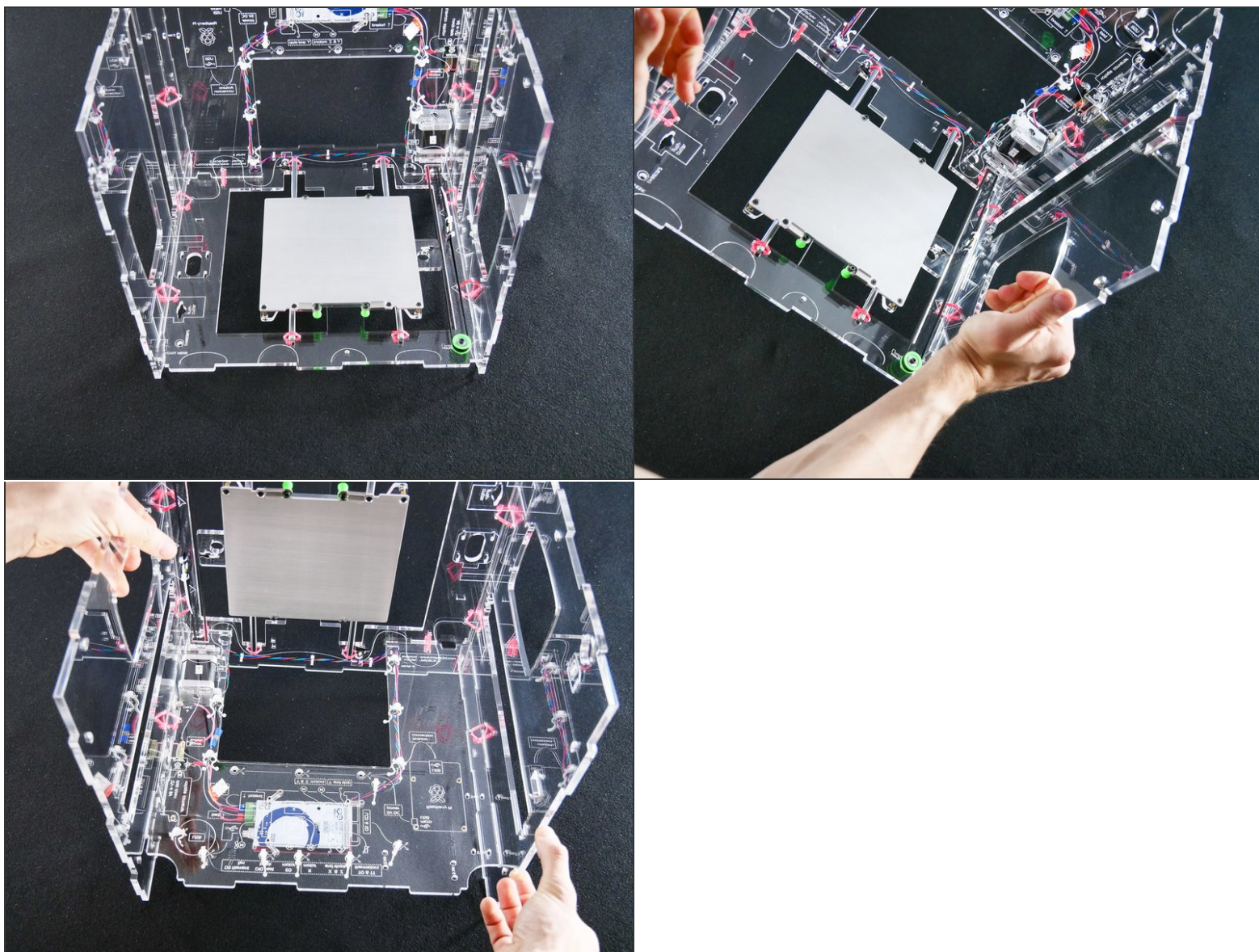
Go back to the [← Makers Kit Build Flow.](#)

## Step 1 — ↳ Insert the X Assembly



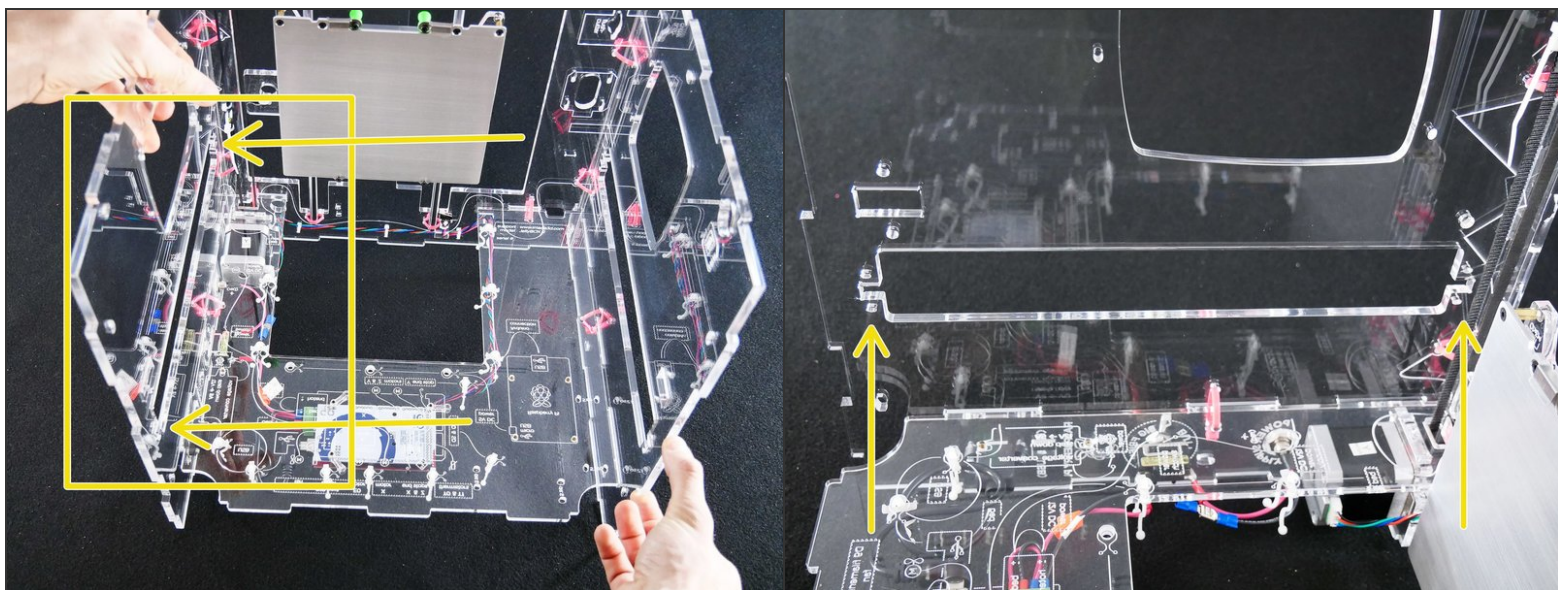


## Step 2

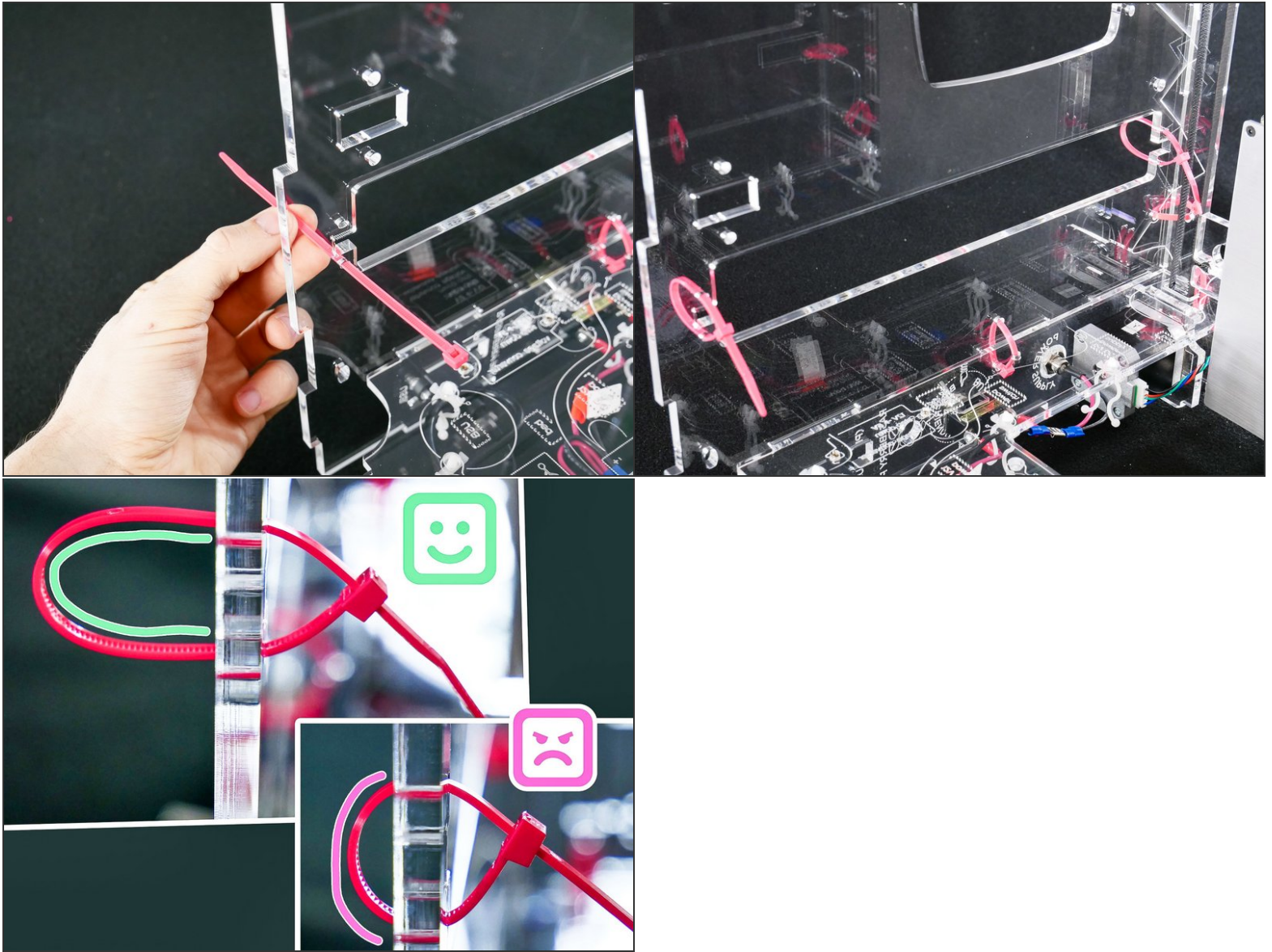




## Step 3



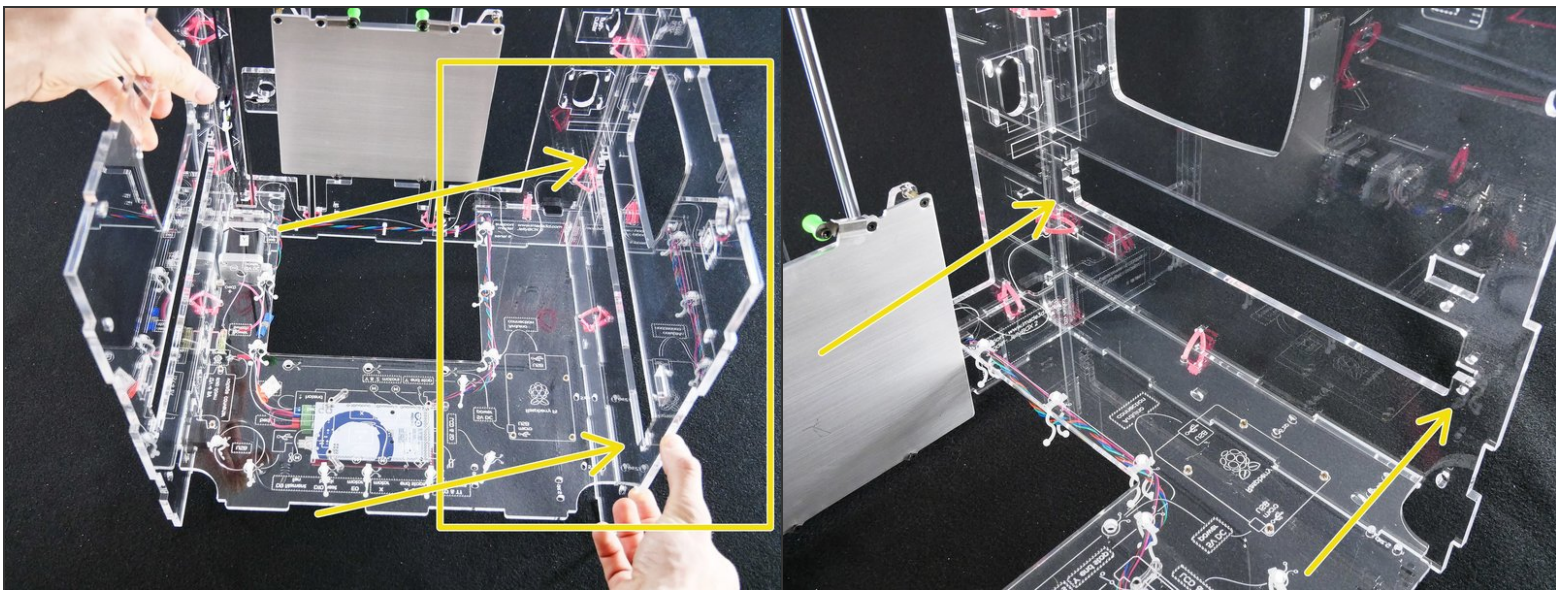
## Step 4



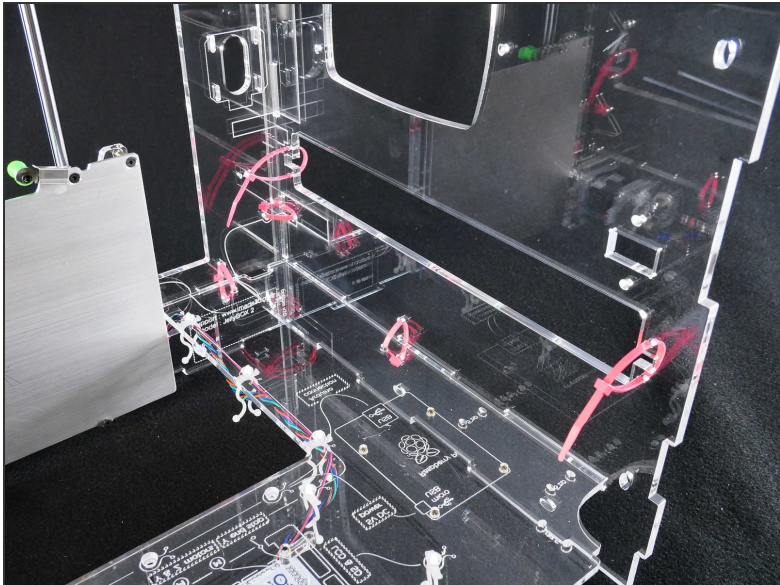
⚠️ Leave the zip ties loose.



## Step 5

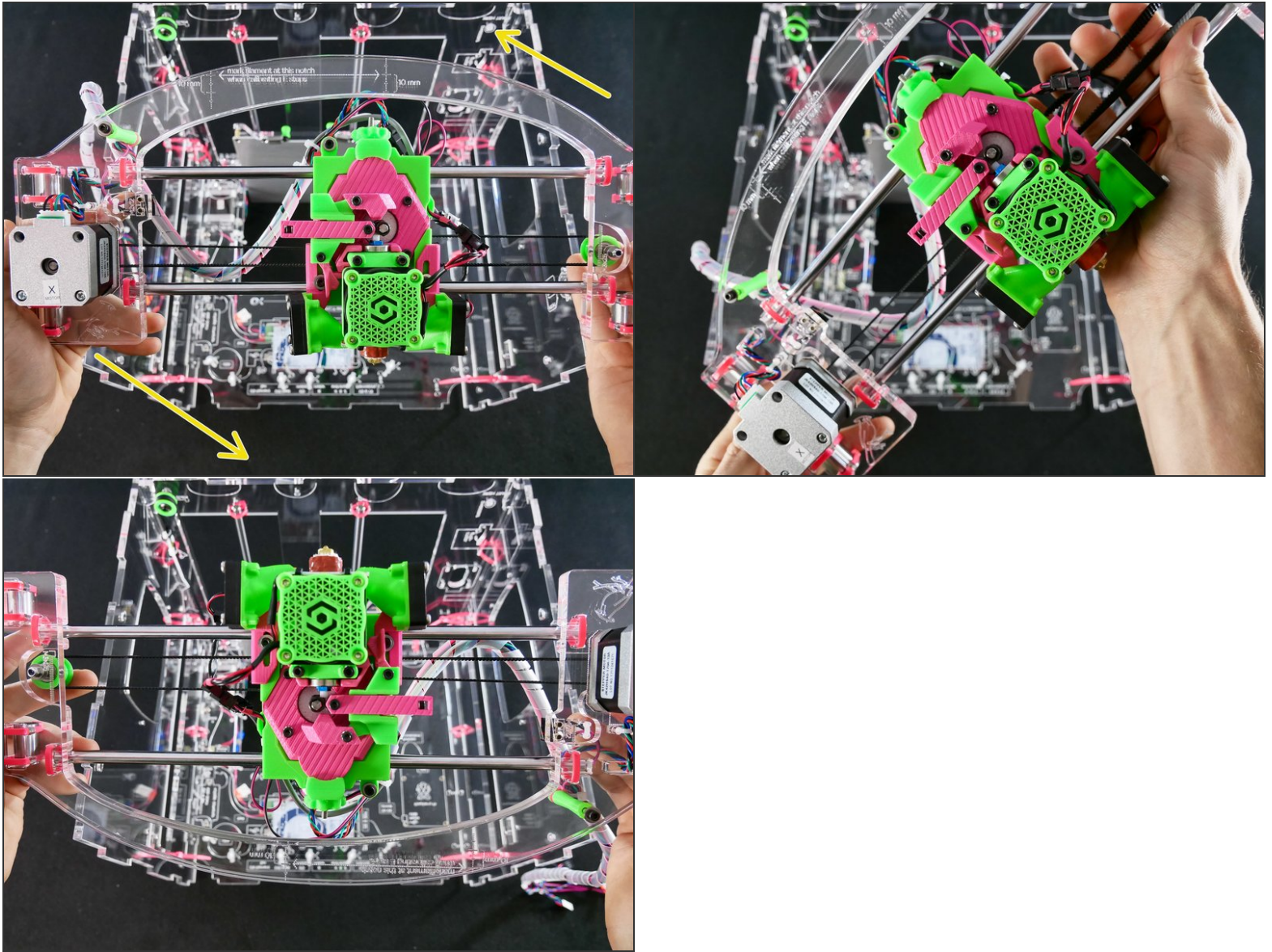


## Step 6



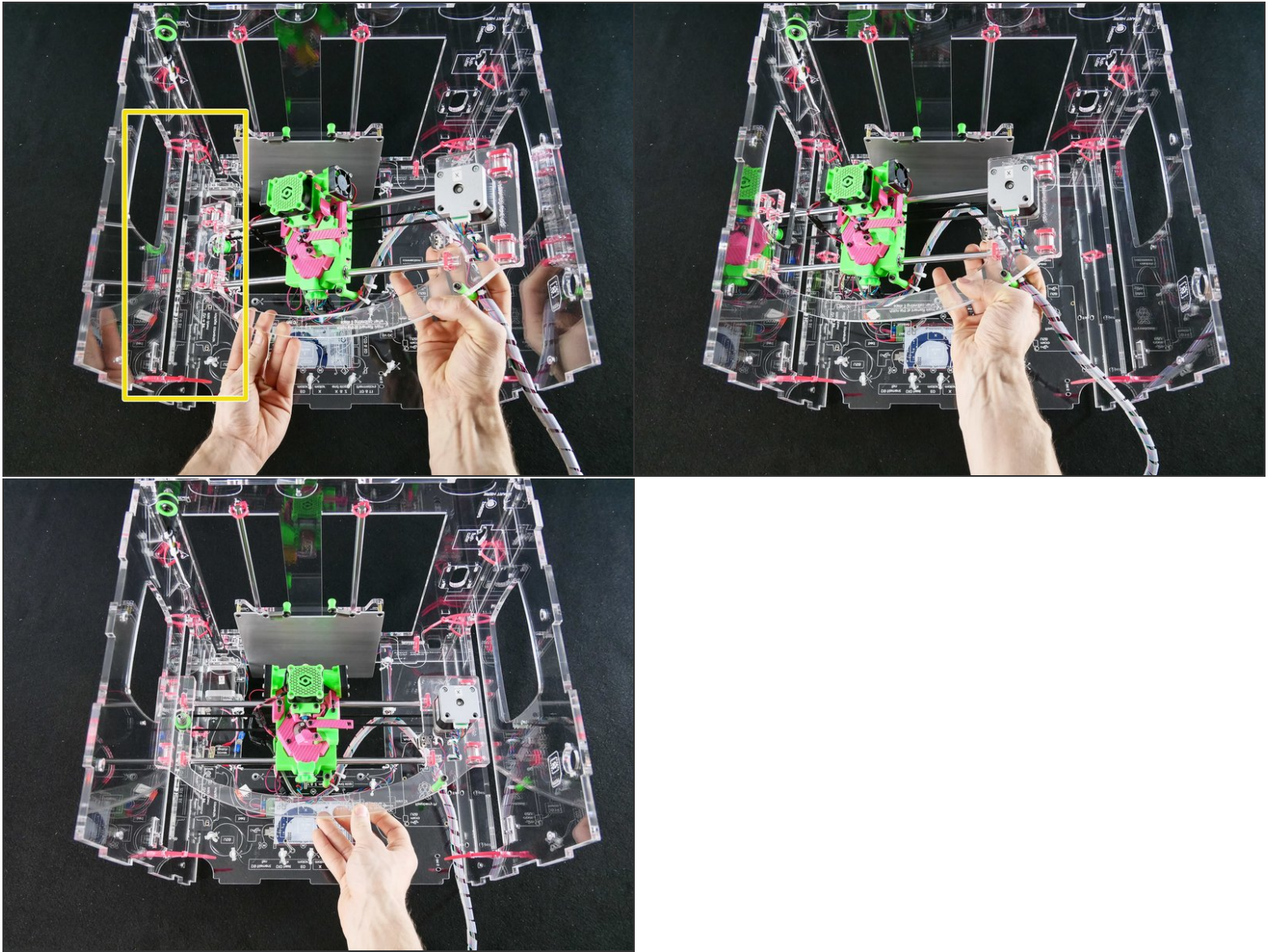


## Step 7

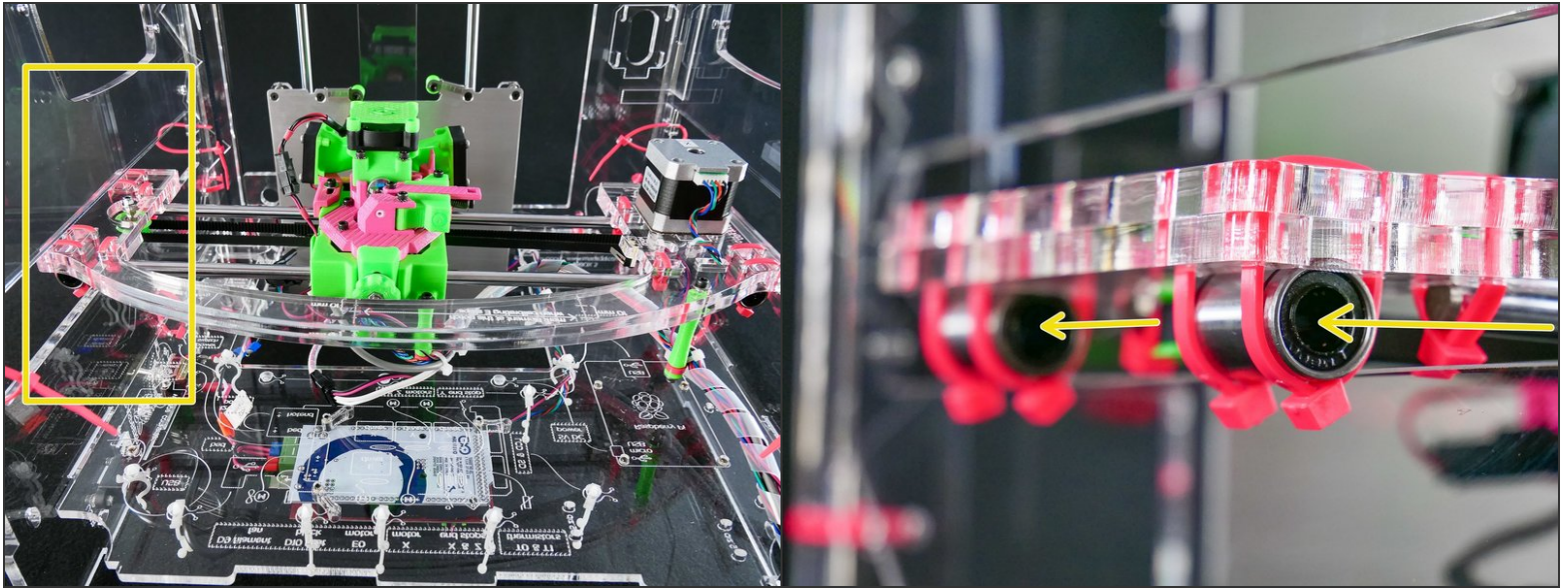




## Step 8

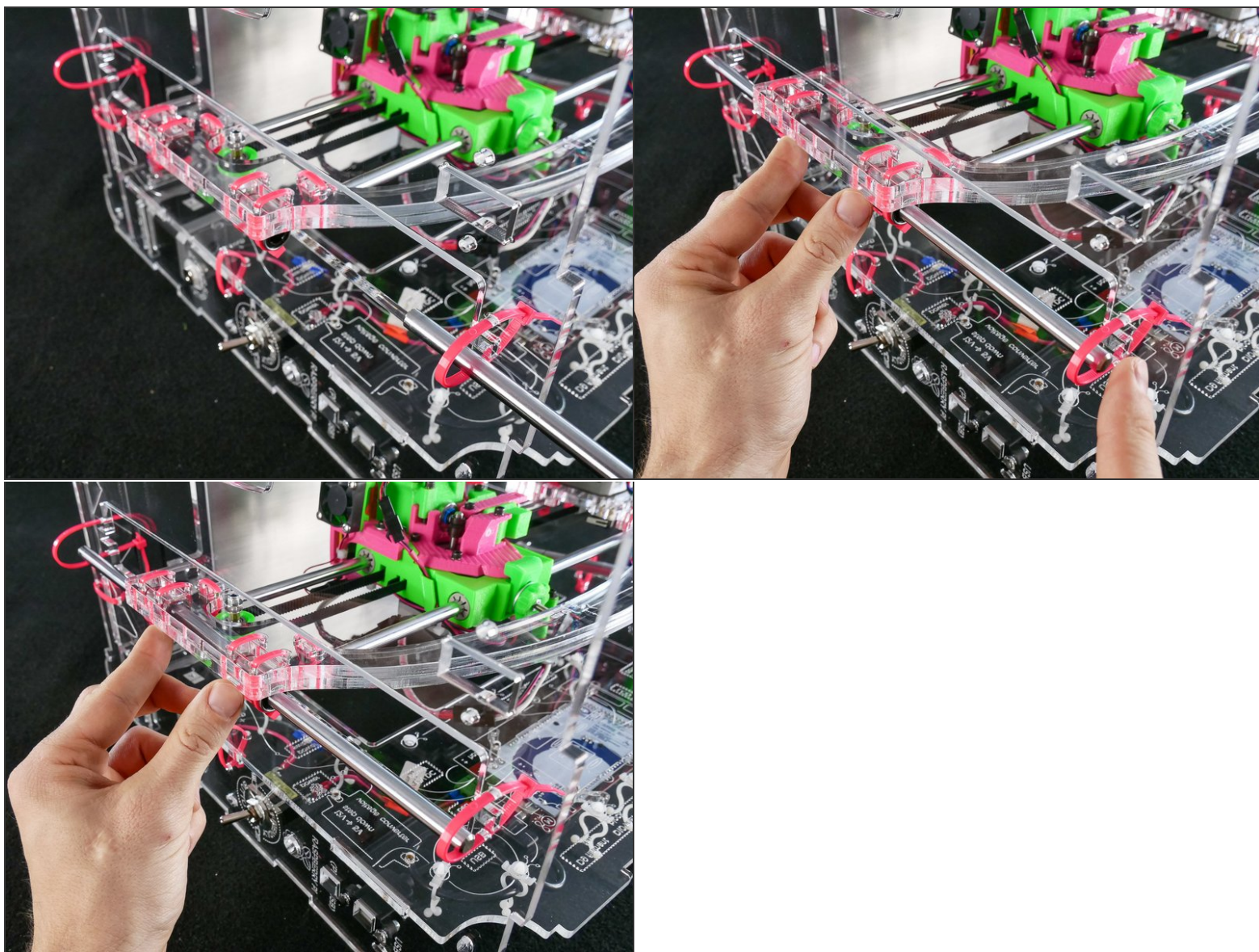


## Step 9



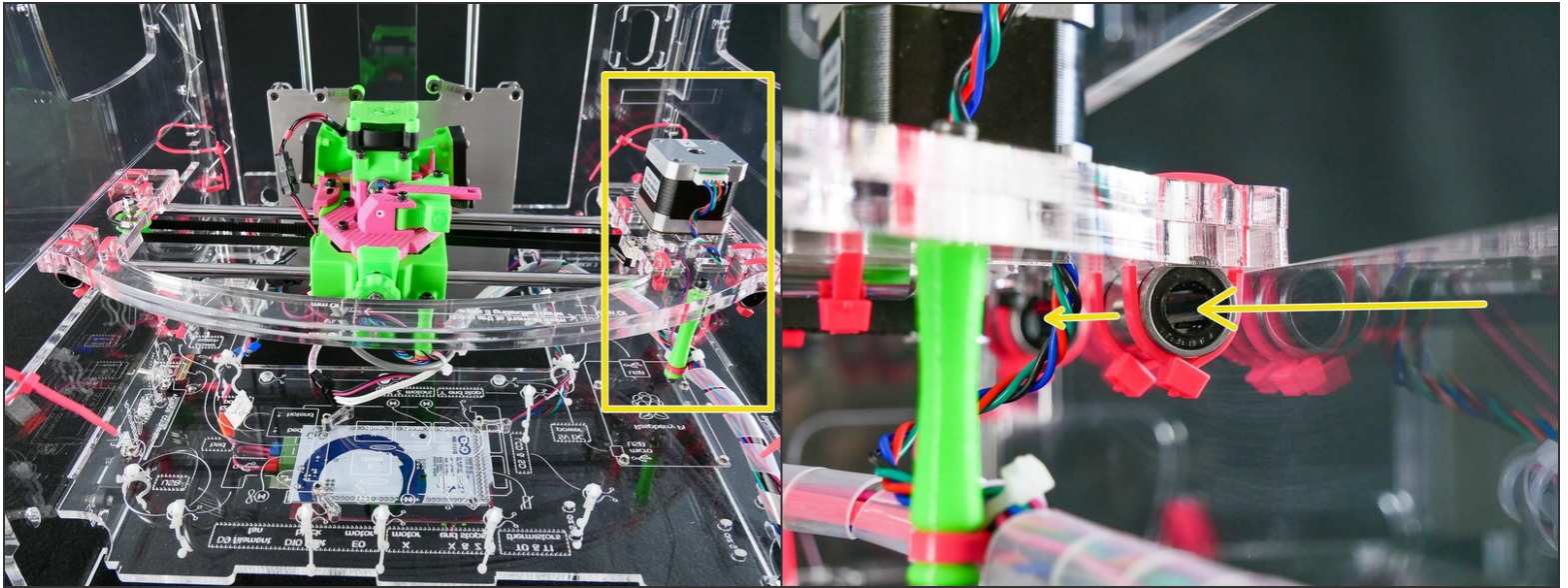


## Step 10



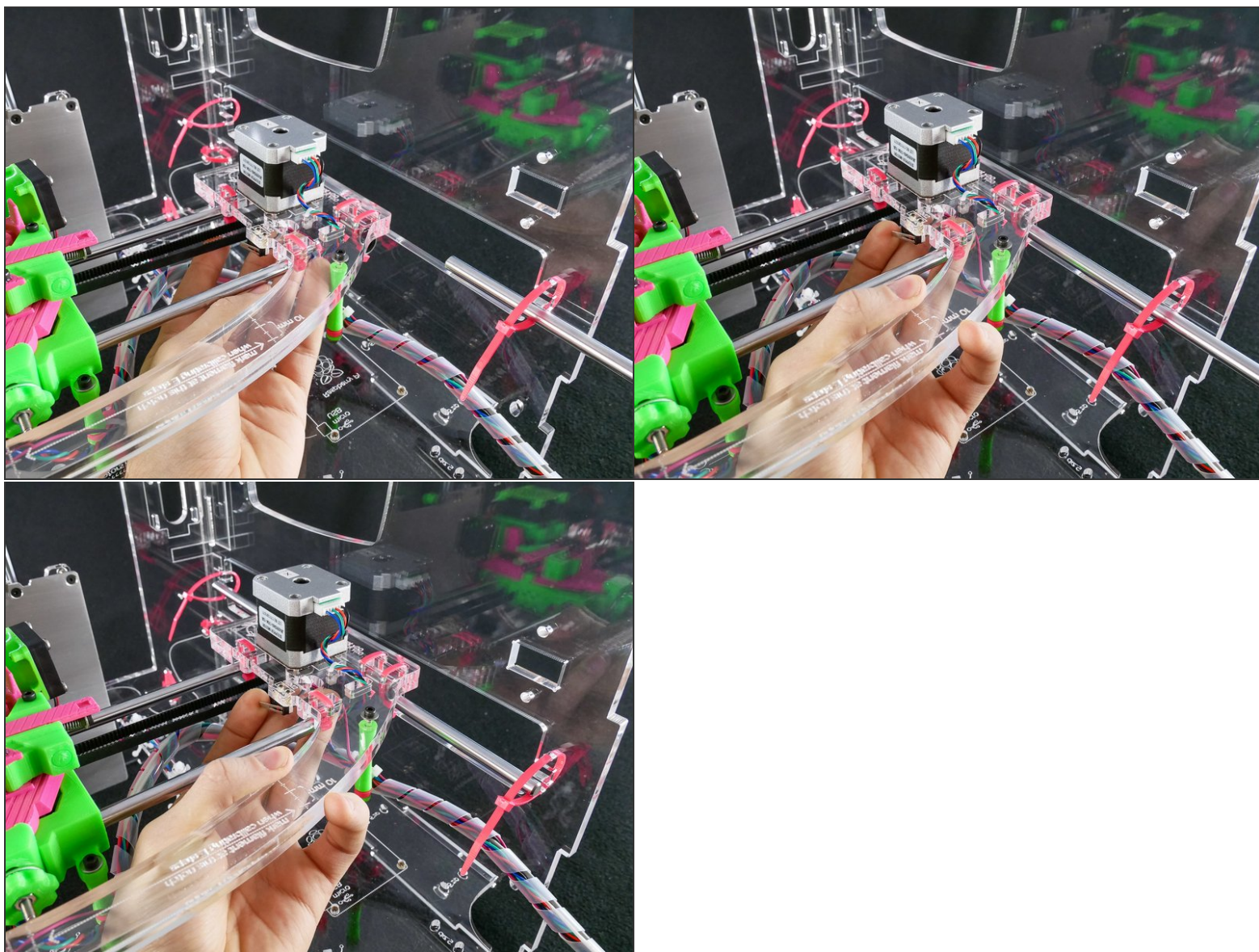
 Be gentle. Do not force the rod and keep it straight or you may damage the ball bearing by knocking some balls out.

## Step 11





## Step 12



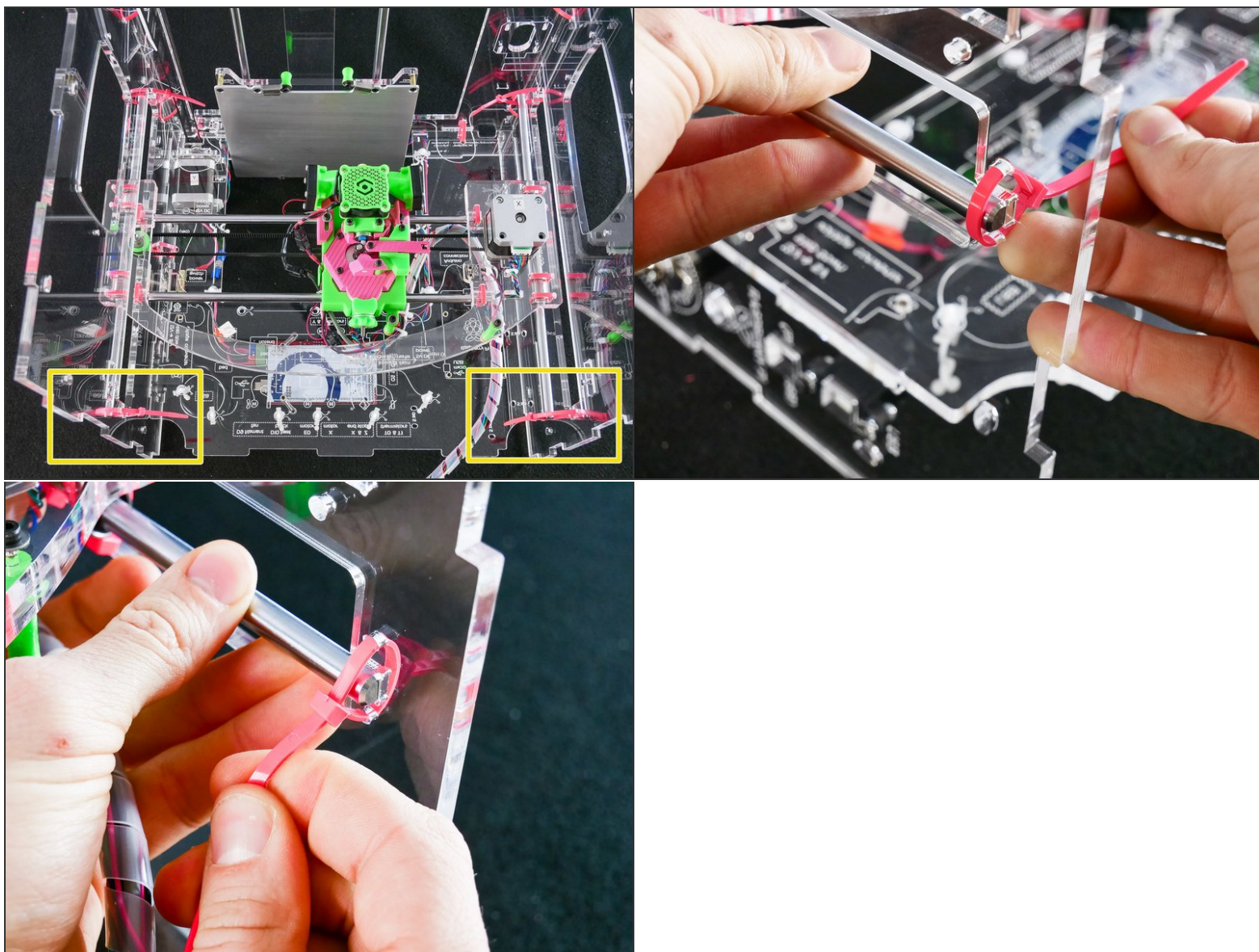
**⚠ BE GENTLE.** Do no force the rod and keep it straight or *you may damage the inside of the bearing.*

## Step 13

- We highly recommend you **scroll ahead** and **look at the whole procedure** of zip tying the x assembly.
- The procedure is quite simple, but it's hard to understand if you look image-by-image.
- ① We'll first tighten both front zip ties, and only then both zip ties in the back.

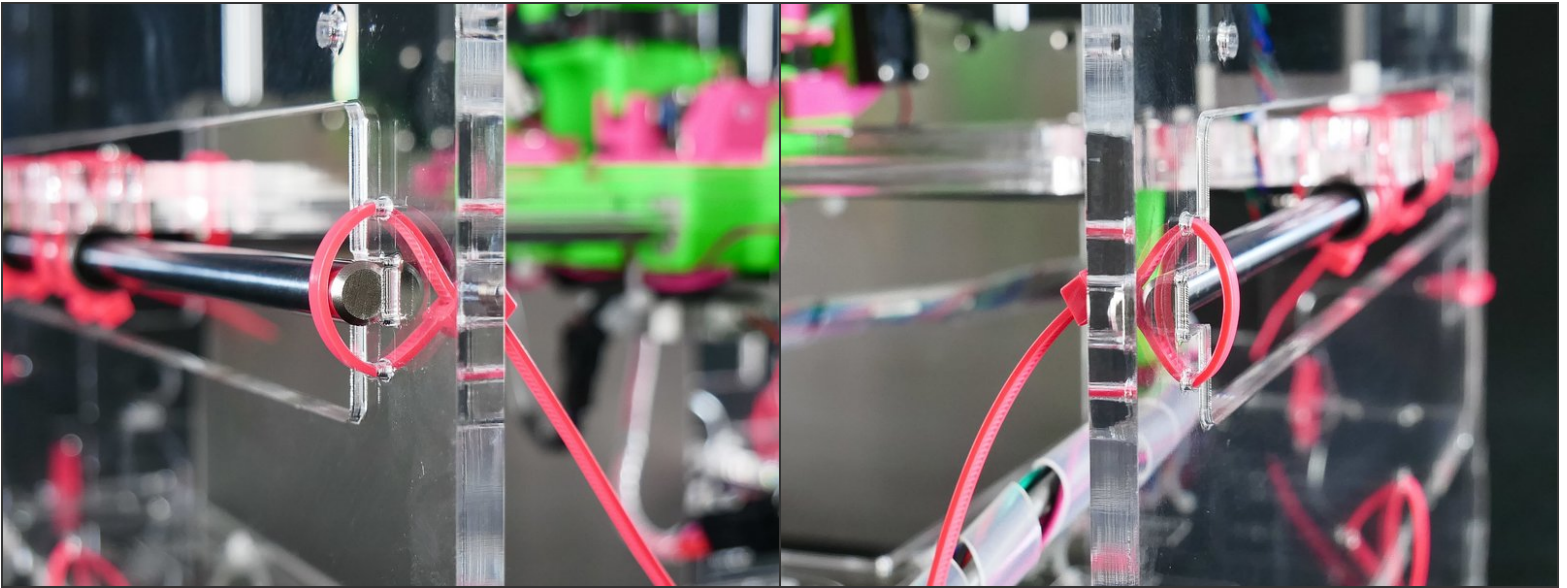


## Step 14



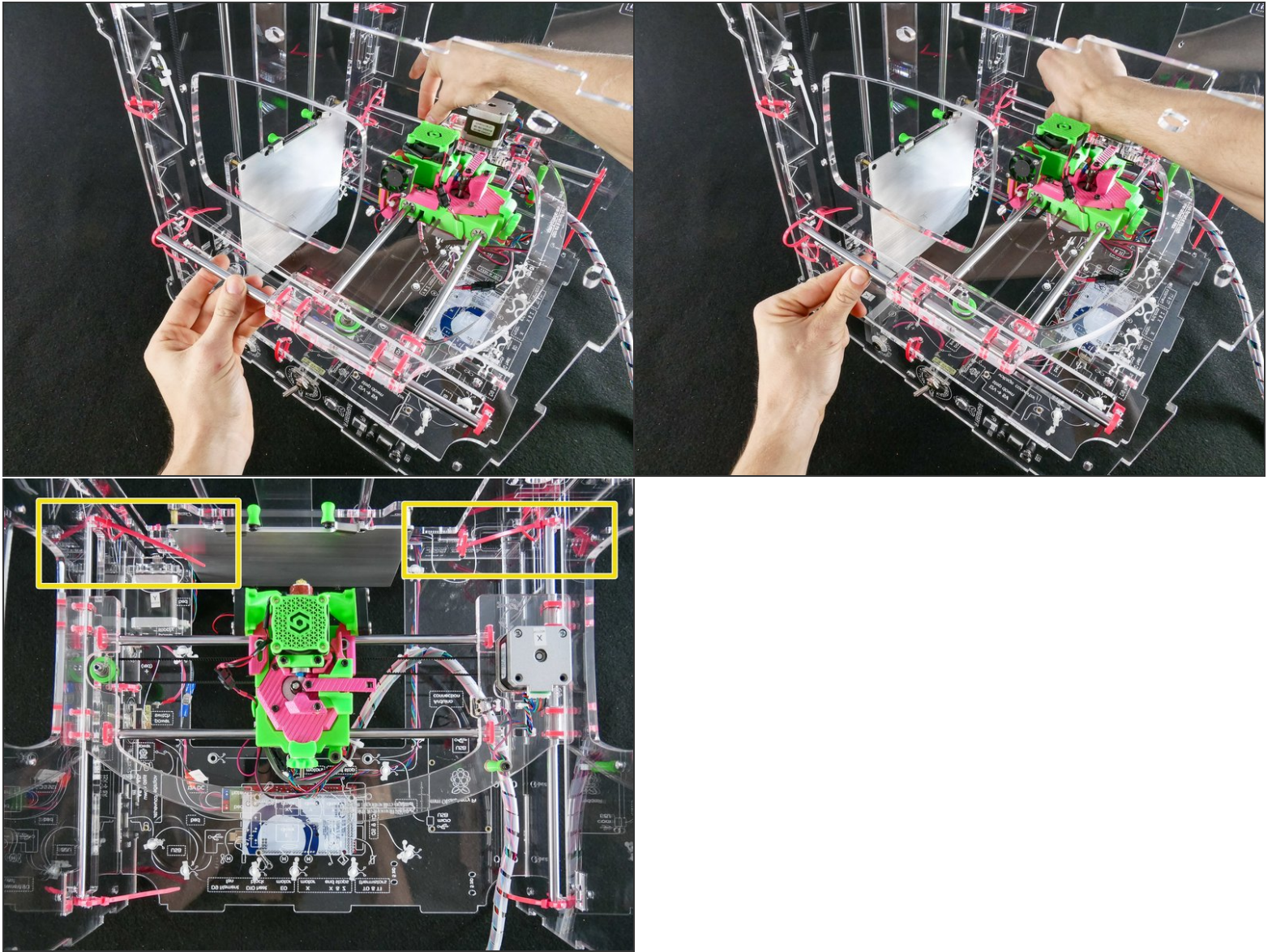


## Step 15



☞ Note that on the **left** the rod is **outside**, while on the **right** the rod is **inside**.

## Step 16



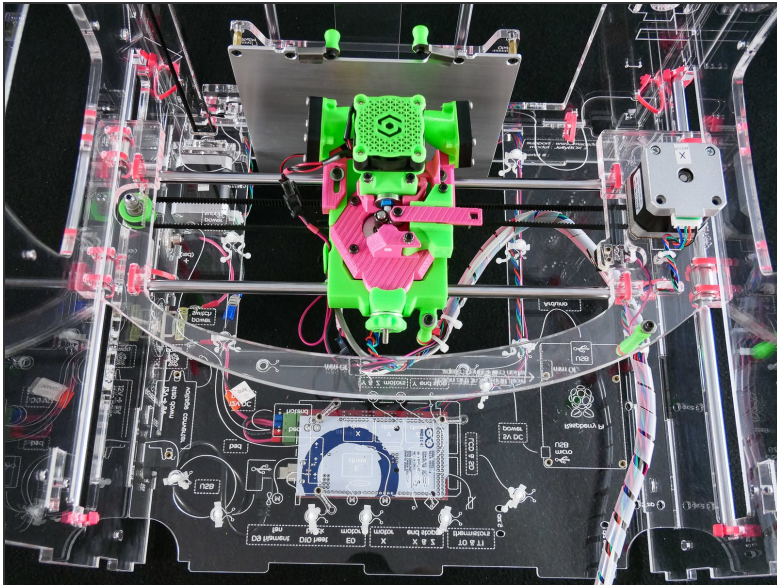
- Push the rods in place and tighten the back zip ties.



## Step 17



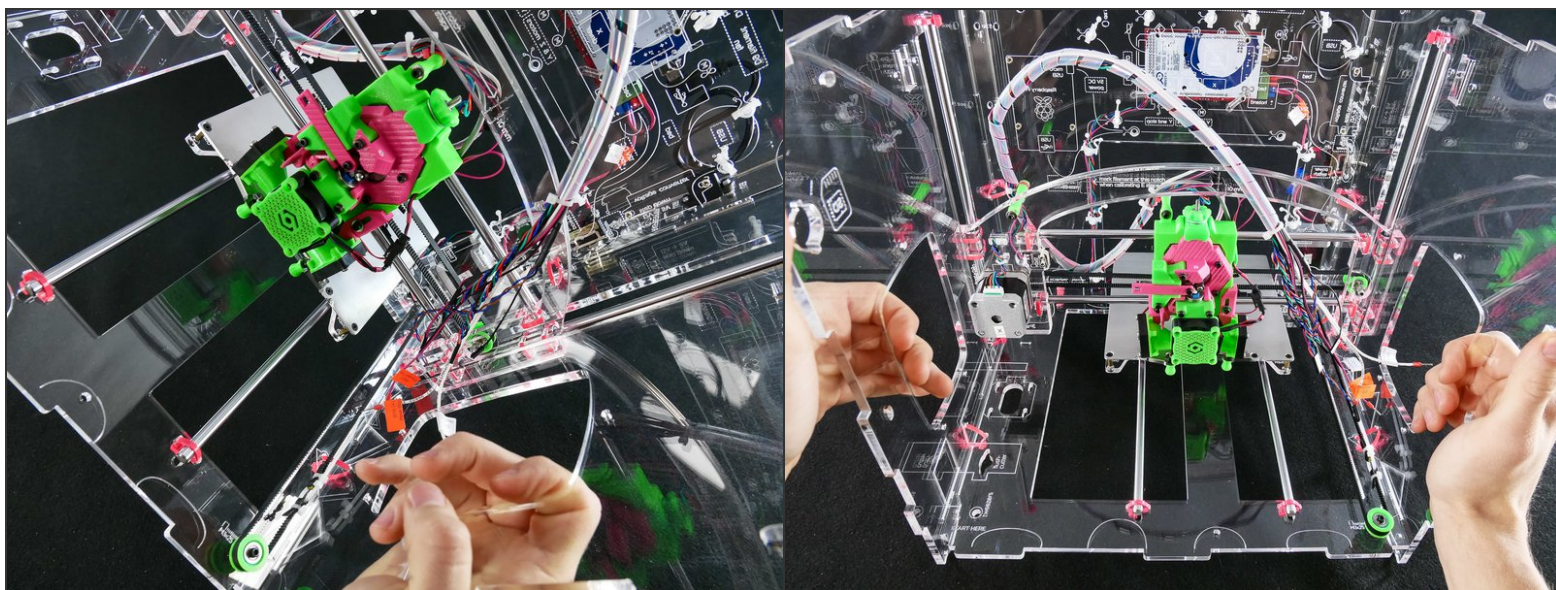
## Step 18 — Looking good!



- The X assembly is inserted.

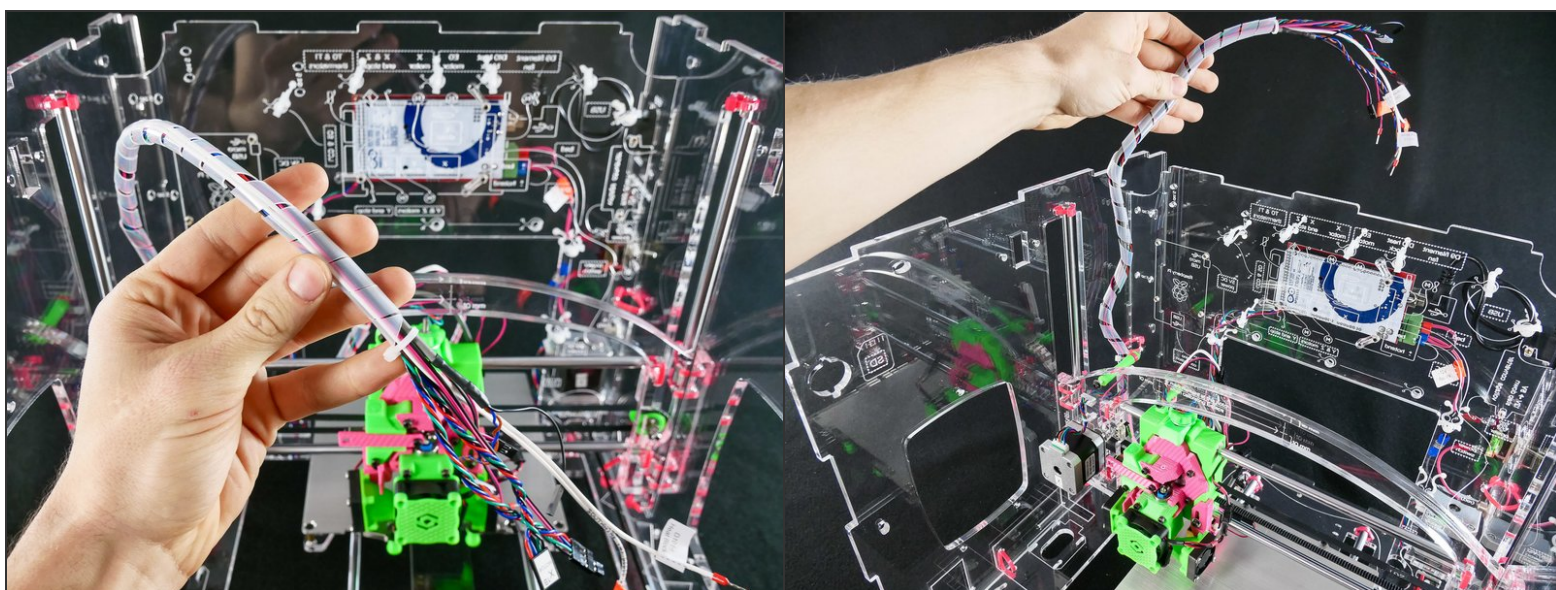


## Step 19



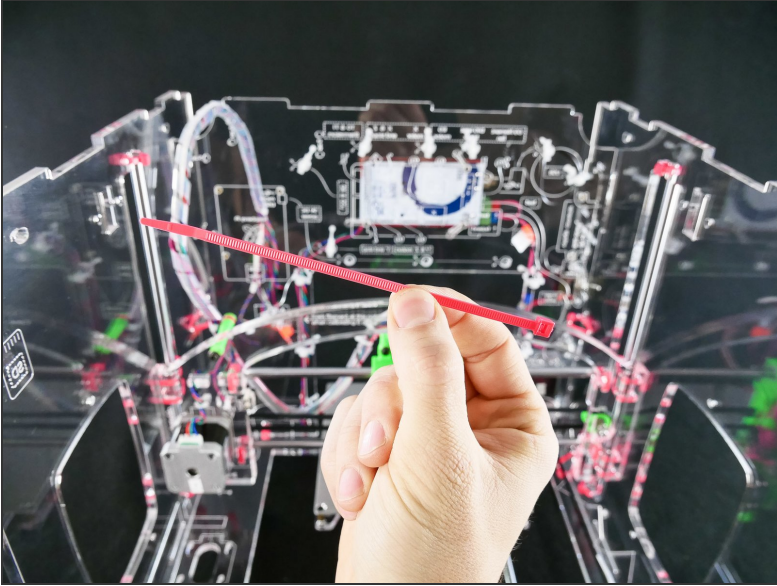
- Turn the JellyBOX from its back into *normal position*.

## Step 20

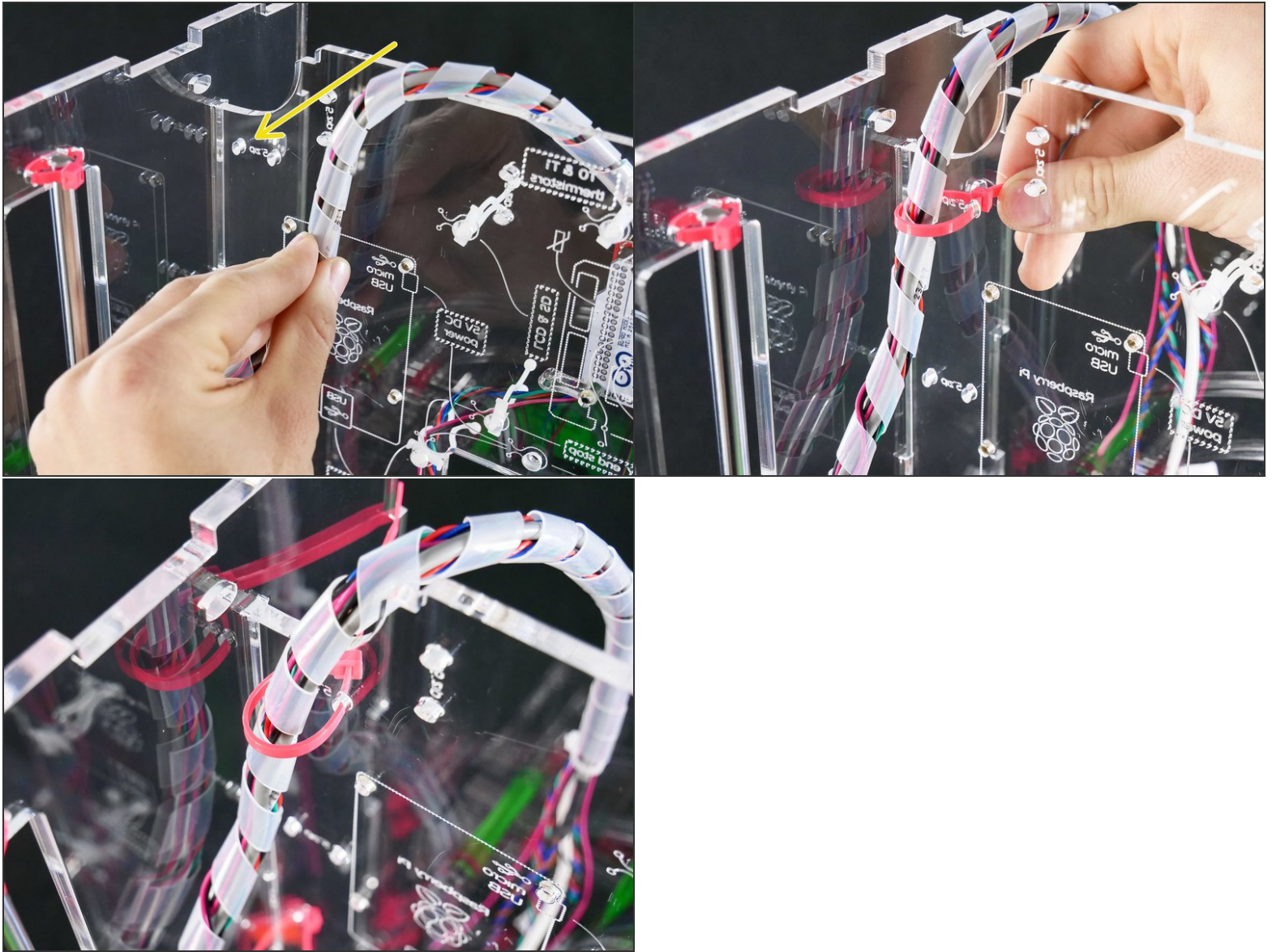




## Step 21



## Step 22

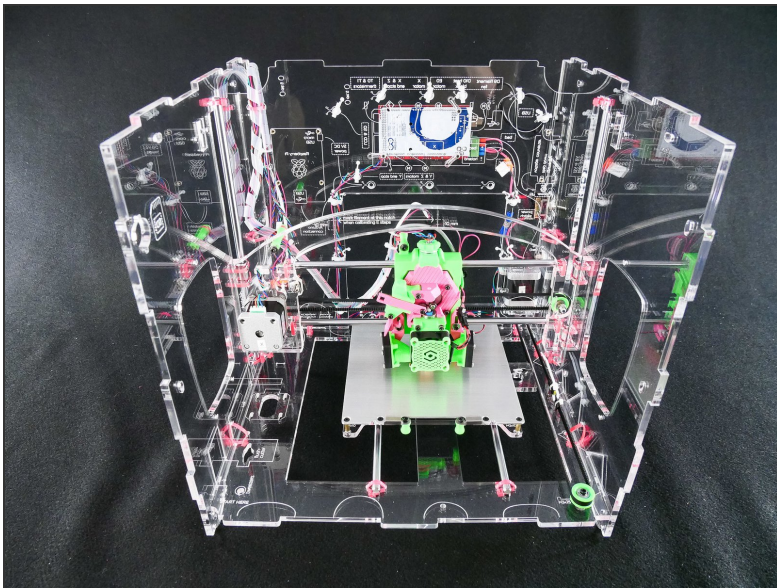


⚠ Leave the zip tie **loose**.

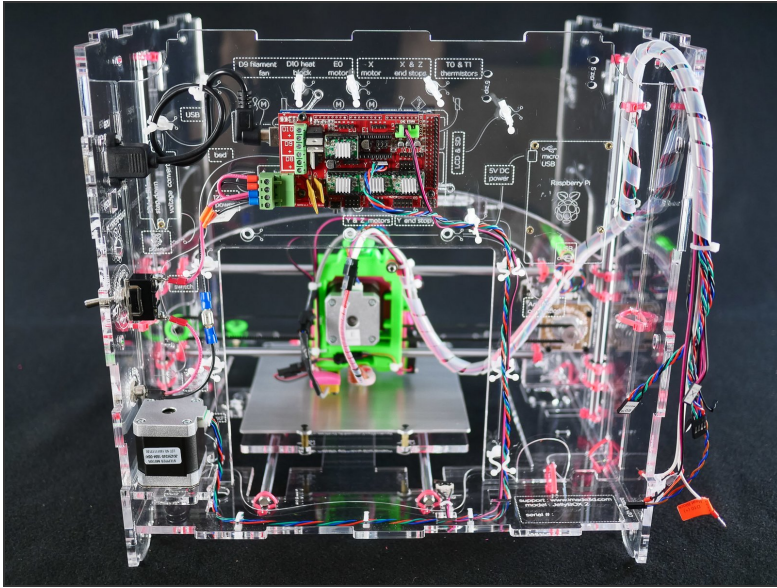


**Step 23 — ► Video: Adjust the X Wire Harness Folding (50s)**

- ► Video: Adjust the X Wire Harness Folding (50s)
- Adjust the mounting point as needed so that the harness is folding nicely and predictably.

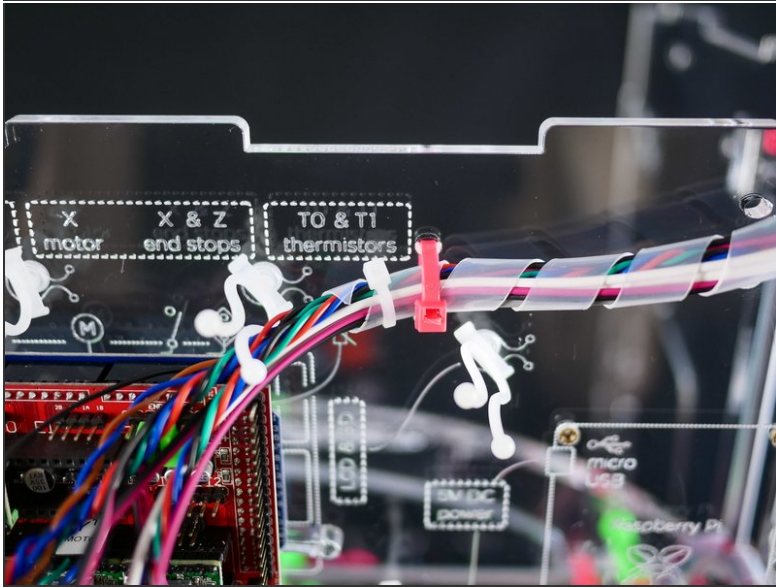
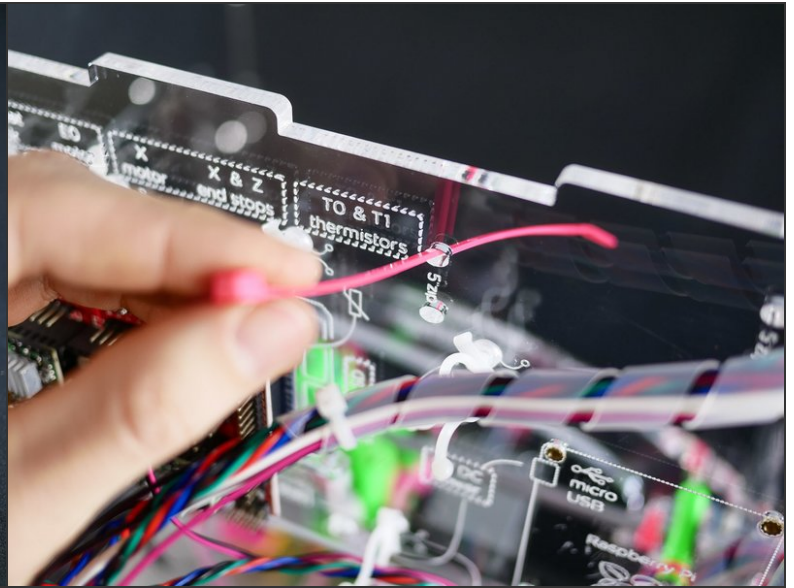
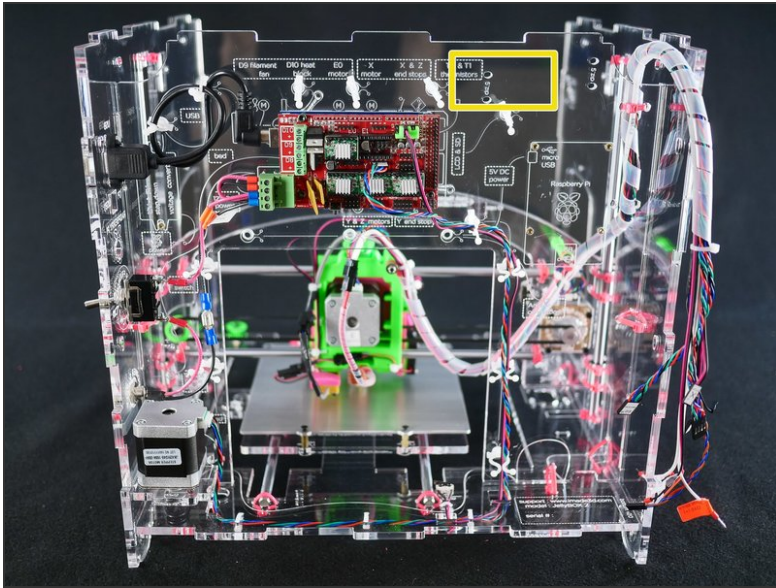
**Step 24 — Looking Good!**

## Step 25 — ↳ Wire up the X Assembly

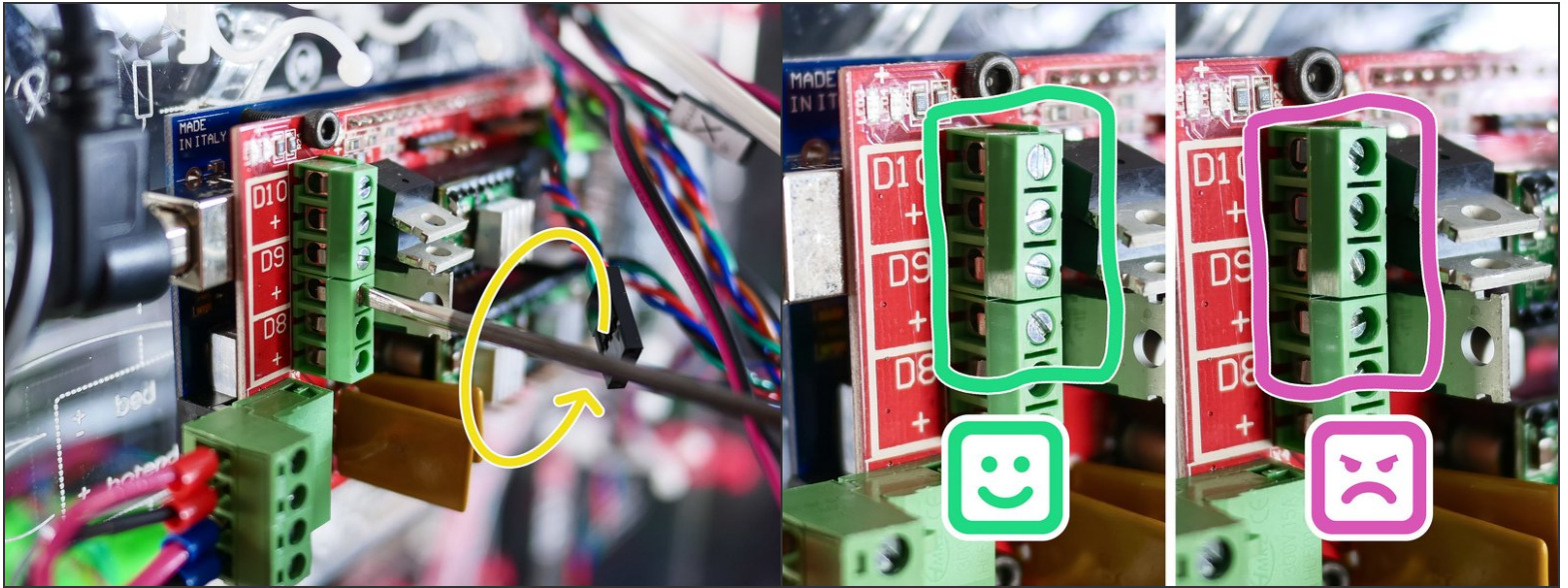




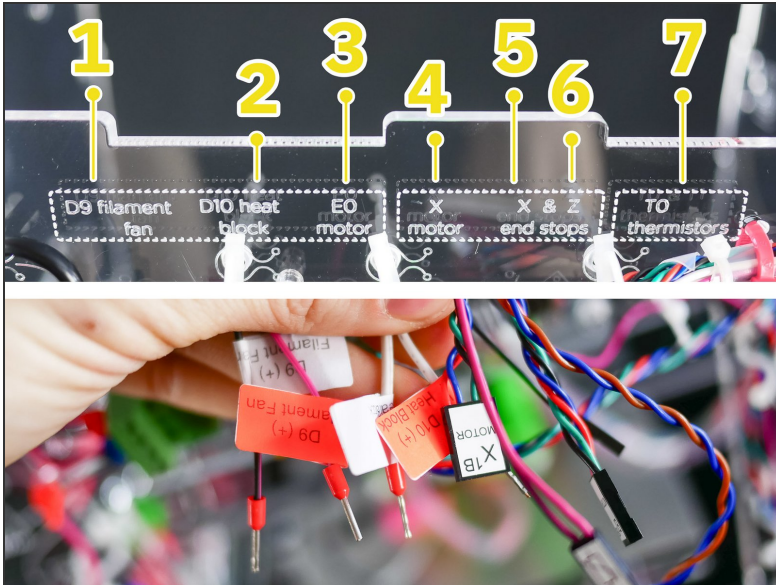
## Step 26



## Step 27



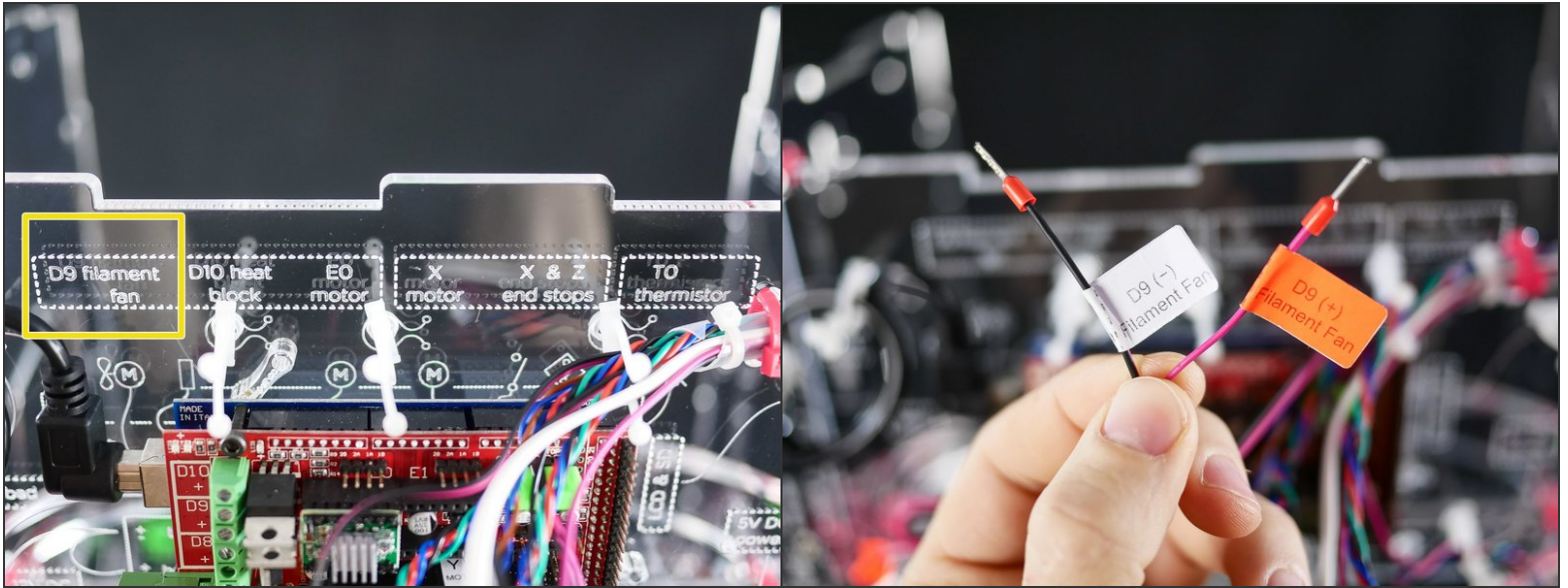
## Step 28



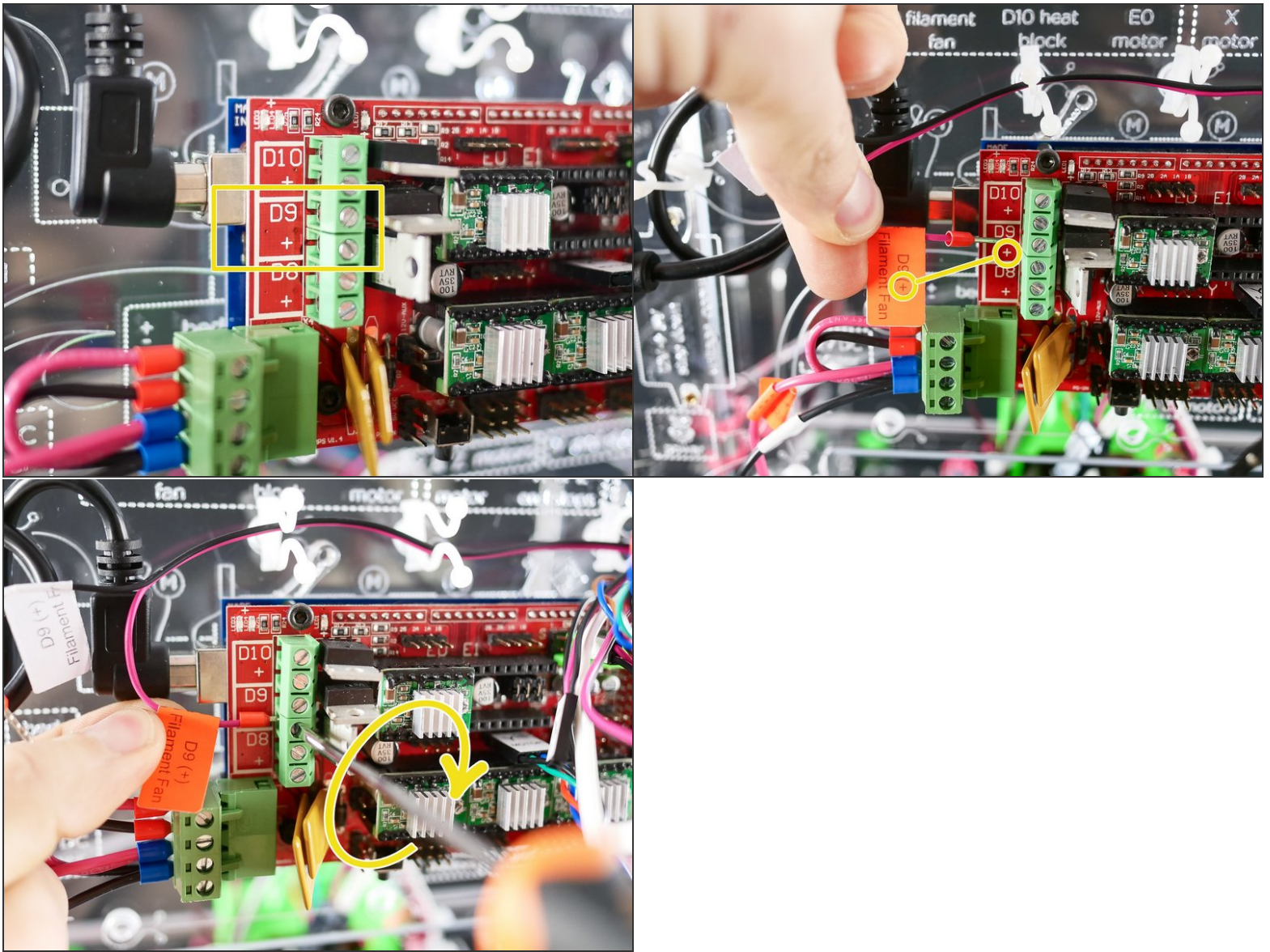
- In short, connect all the wires according to their labels. We'll start on the left.



## Step 29



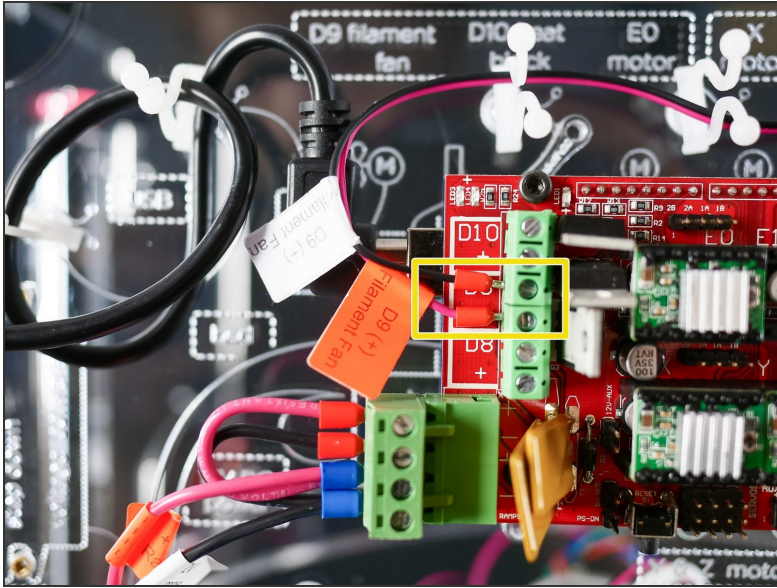
## Step 30



⚠ Make sure to match **plus with plus...**

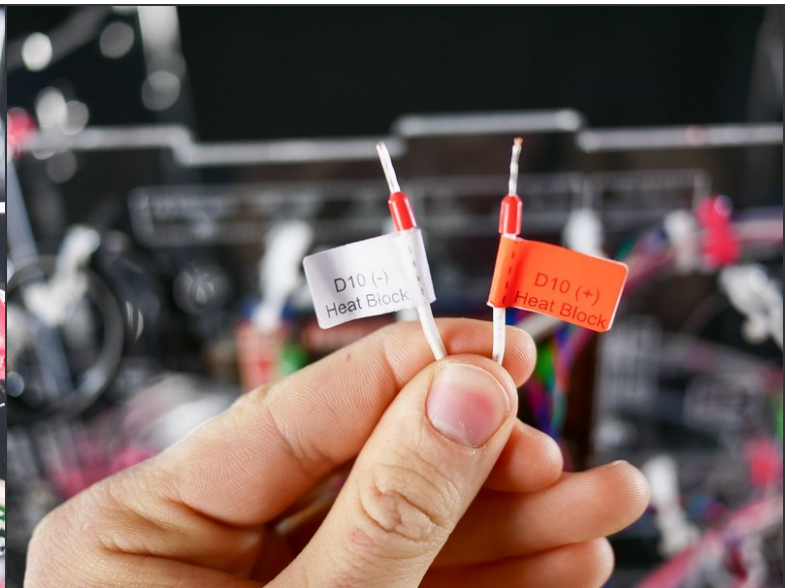
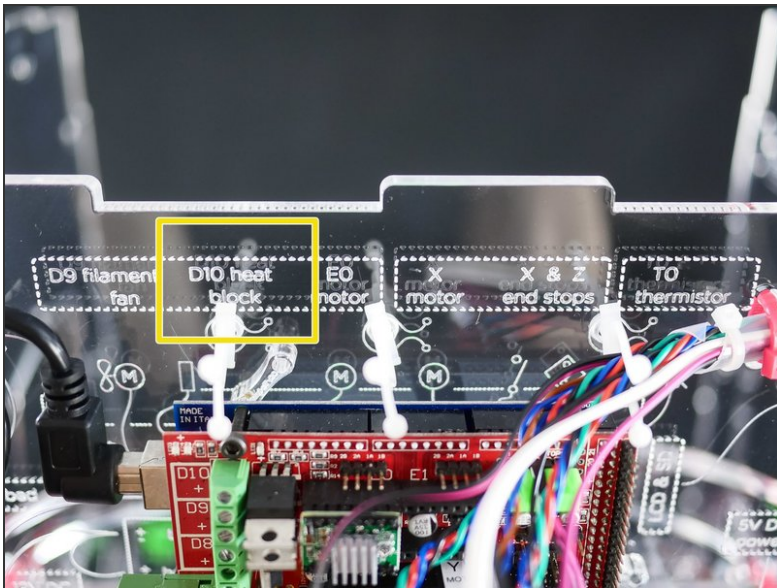


## Step 31

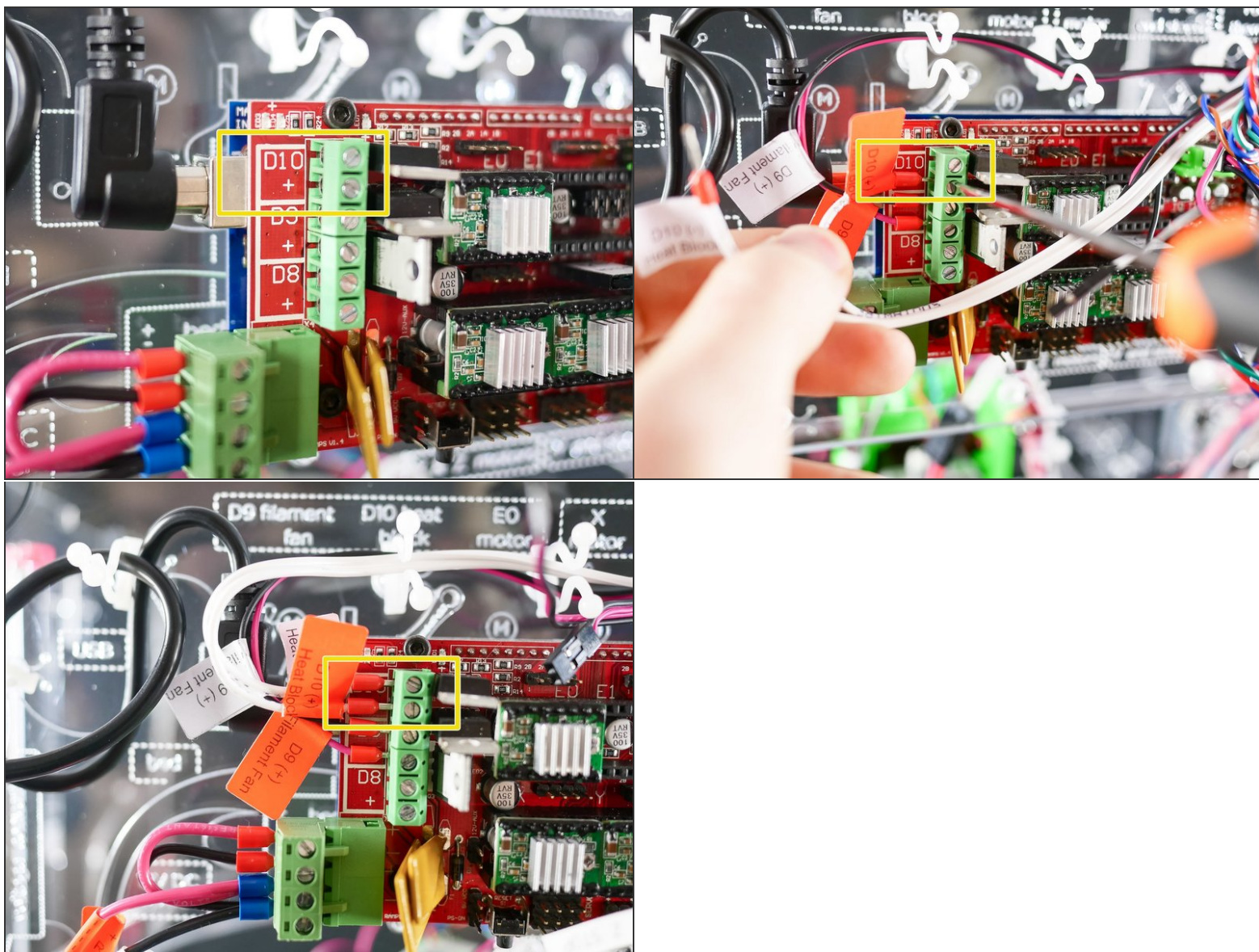


⚠ ... and minus with minus.

## Step 32



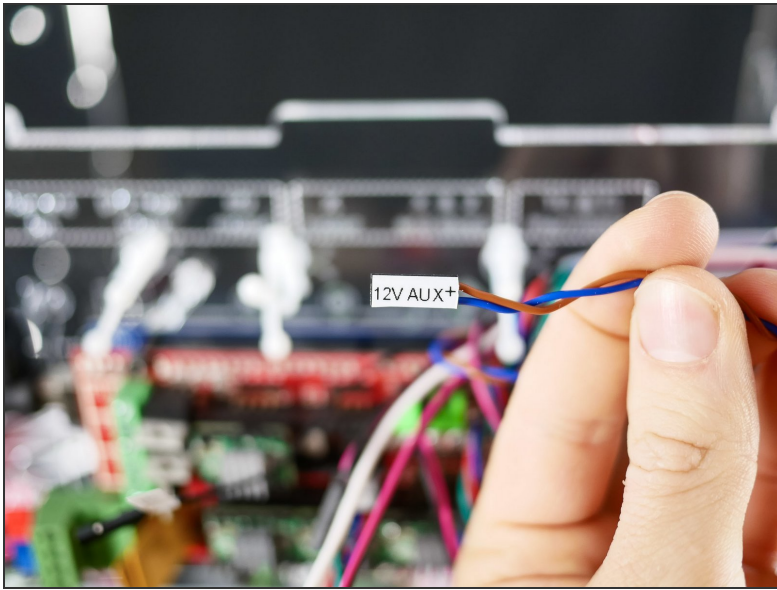
## Step 33



⚠ Make sure to match plus with plus and minus with minus.

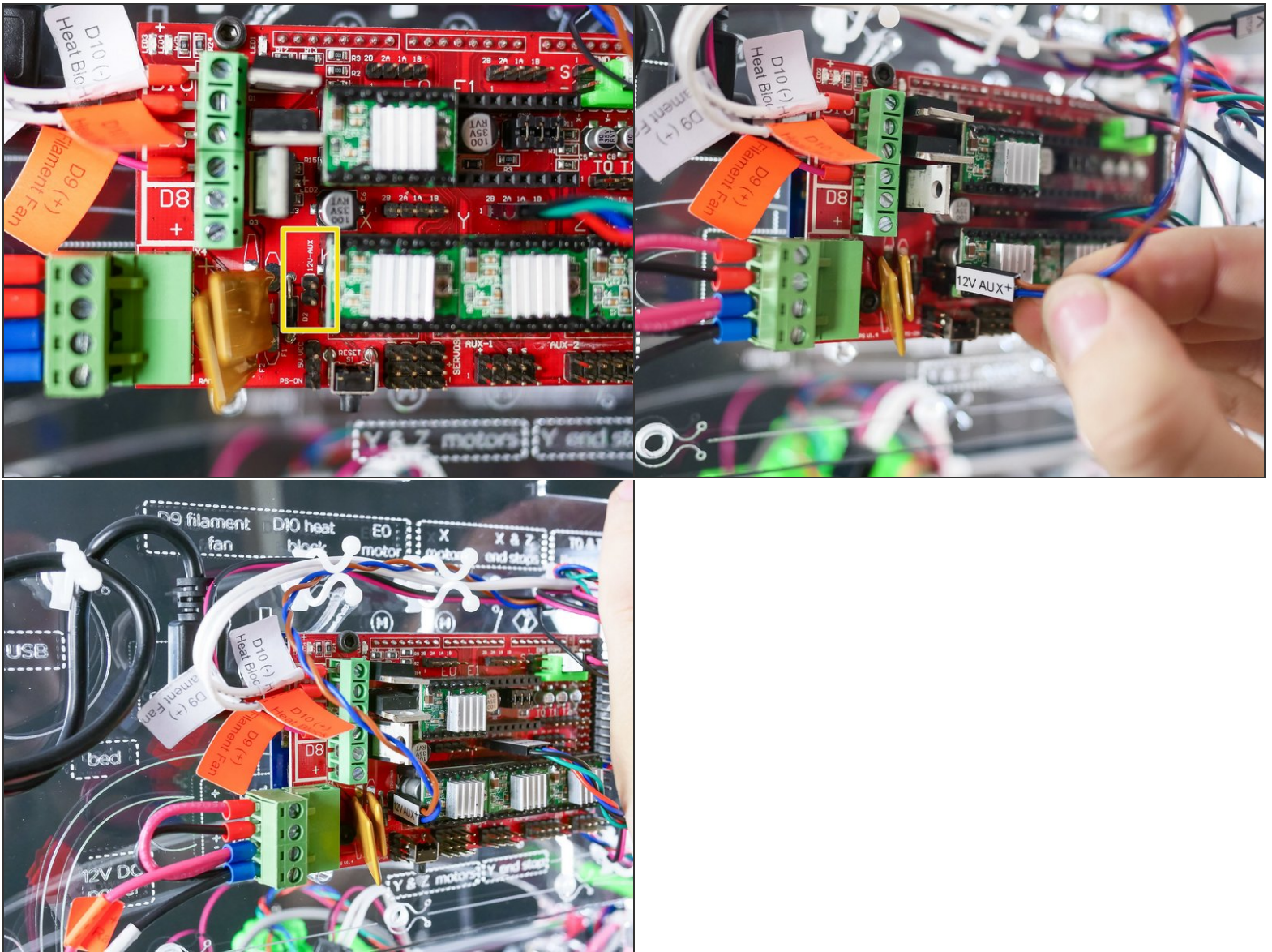


## Step 34



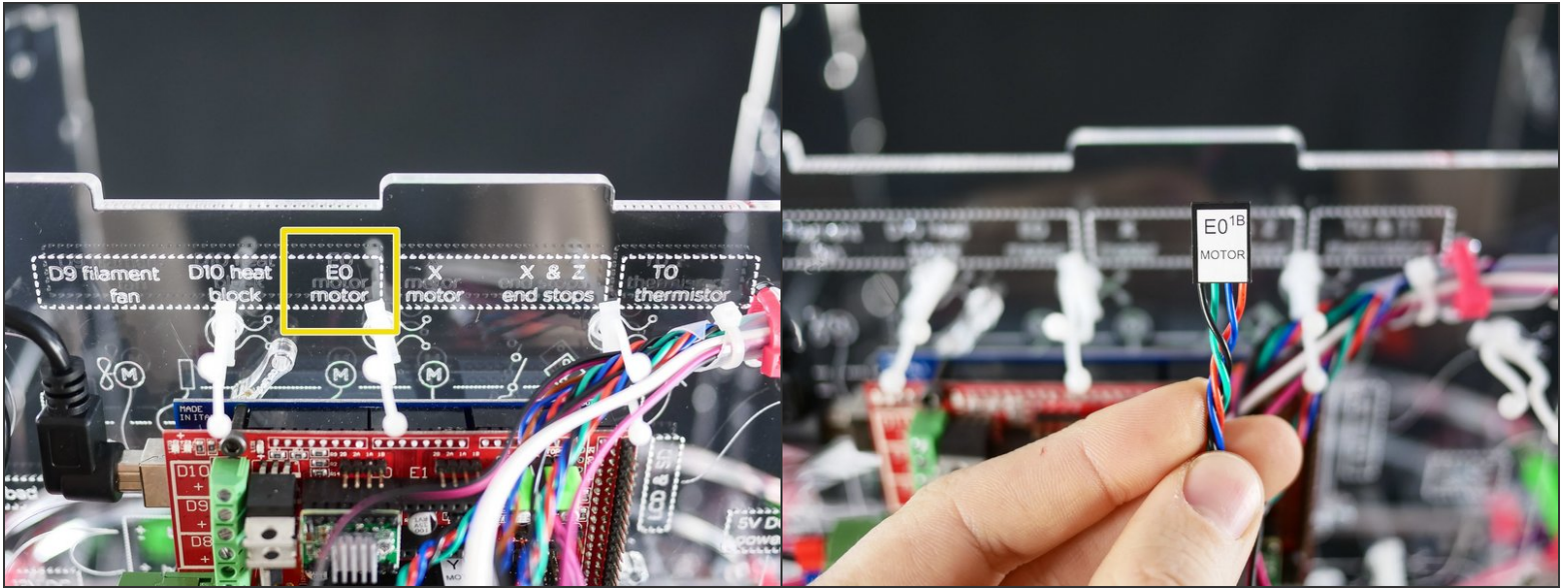
**i** This 12V line powers up the Z Probe and the Hotend fan.

## Step 35

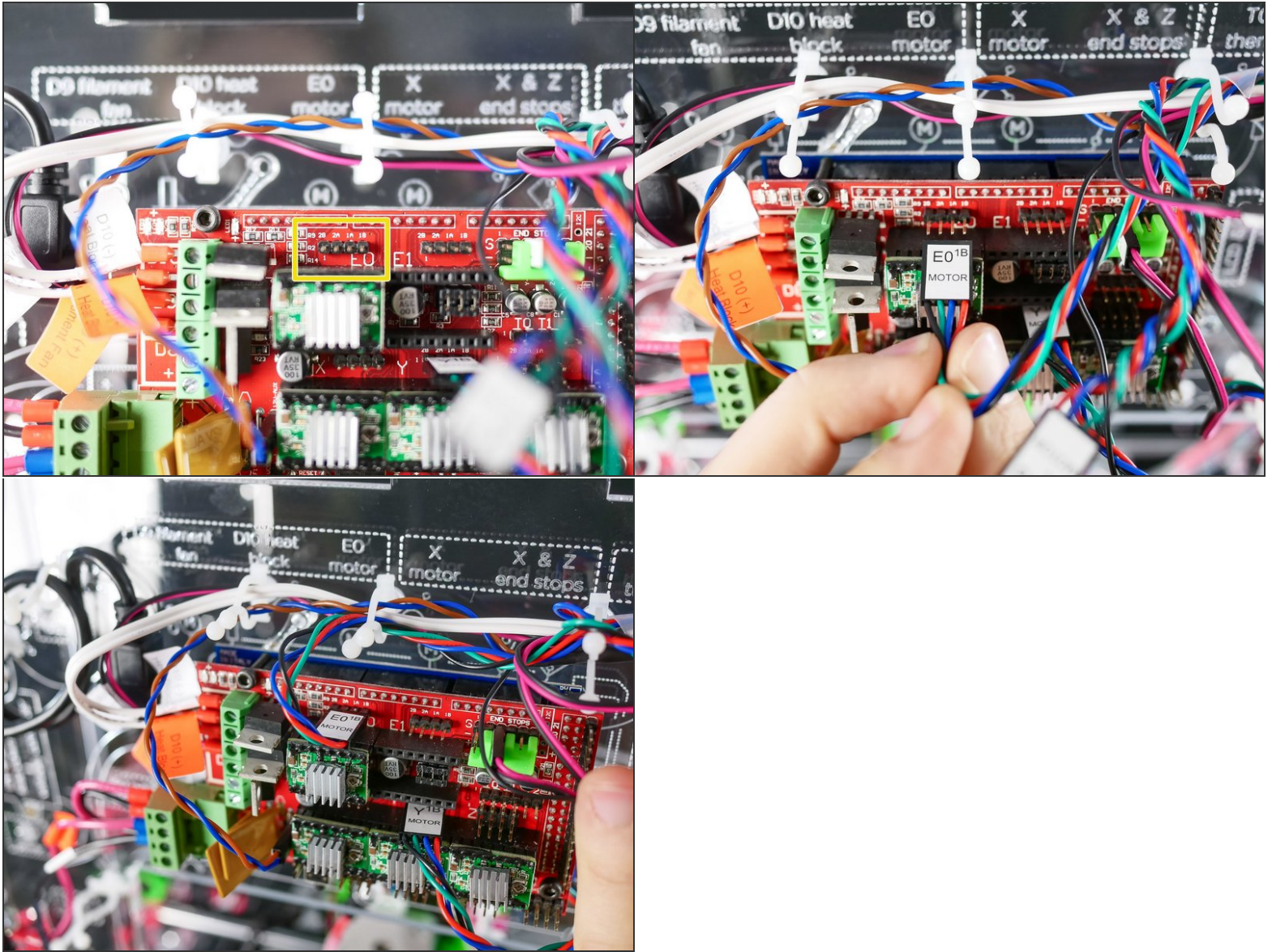




## Step 36

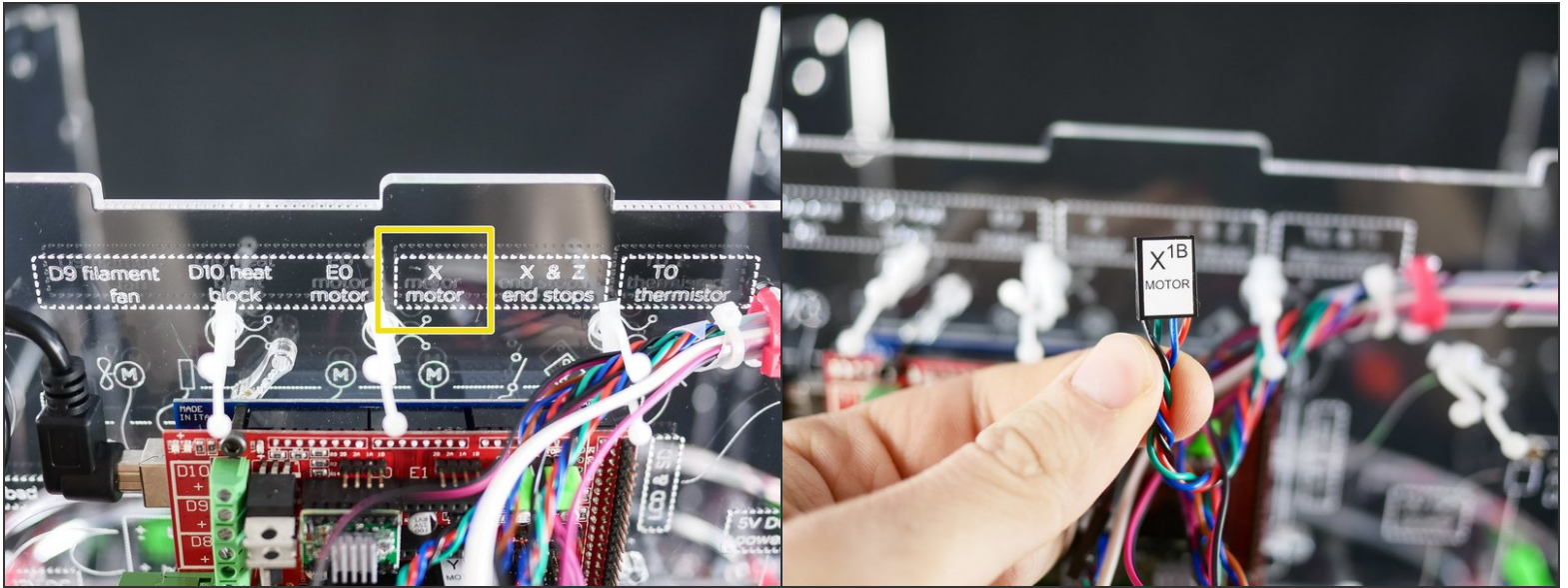


## Step 37

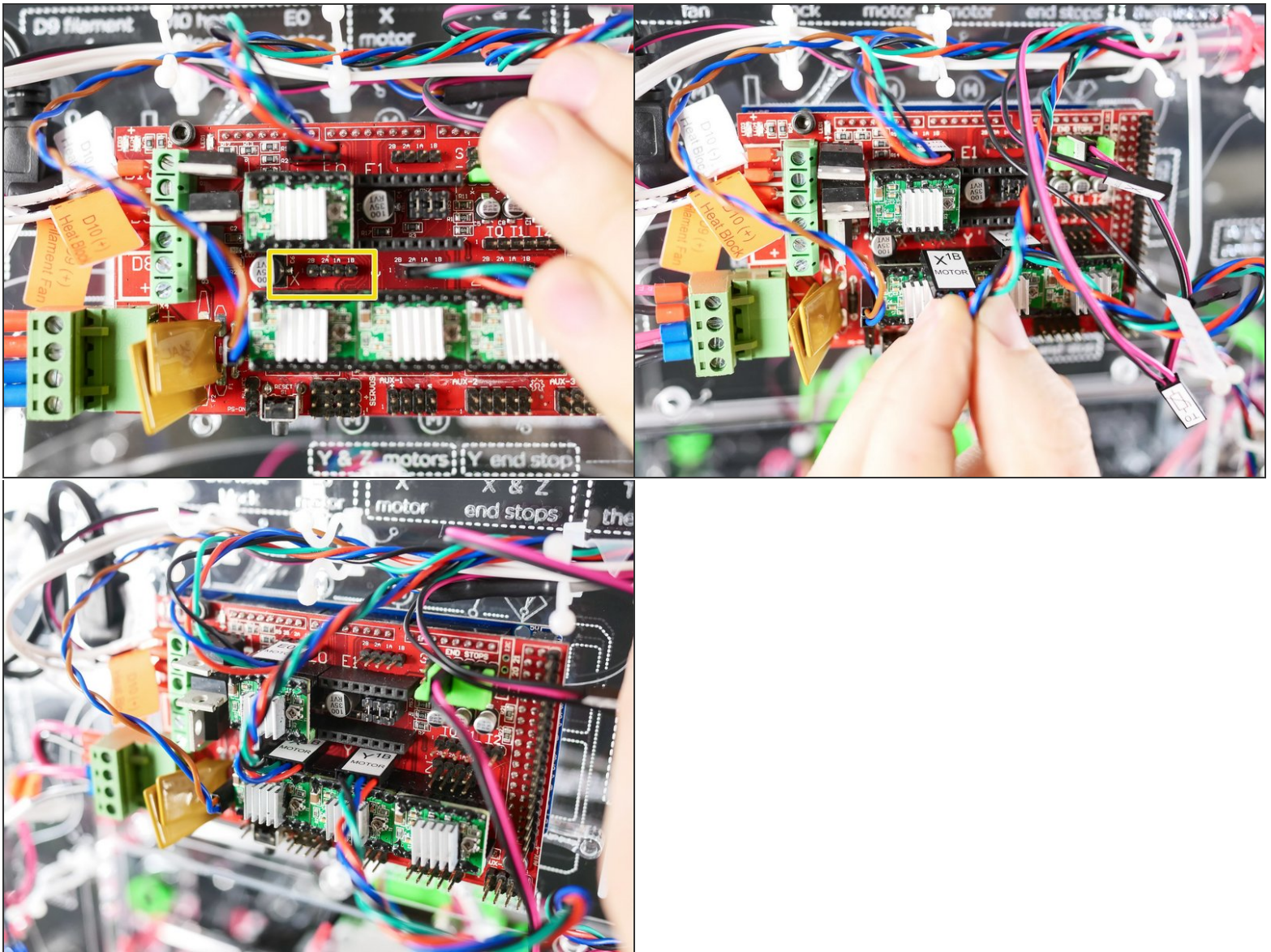




## Step 38

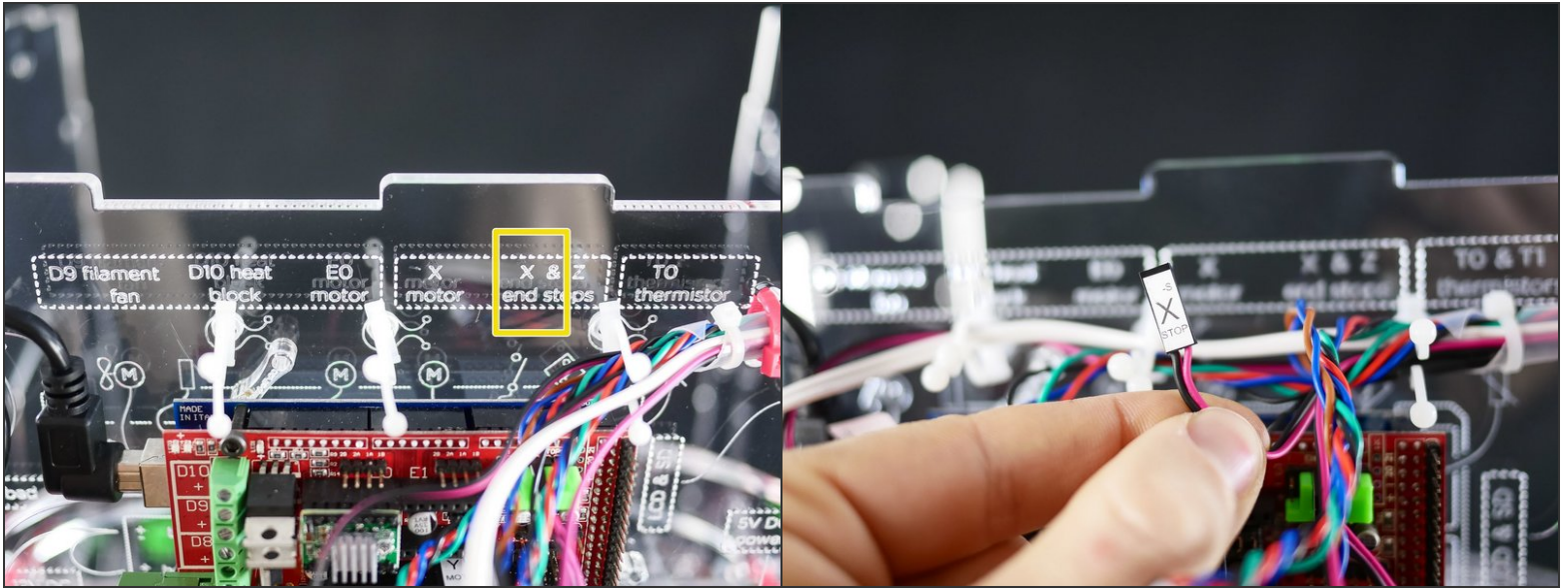


## Step 39

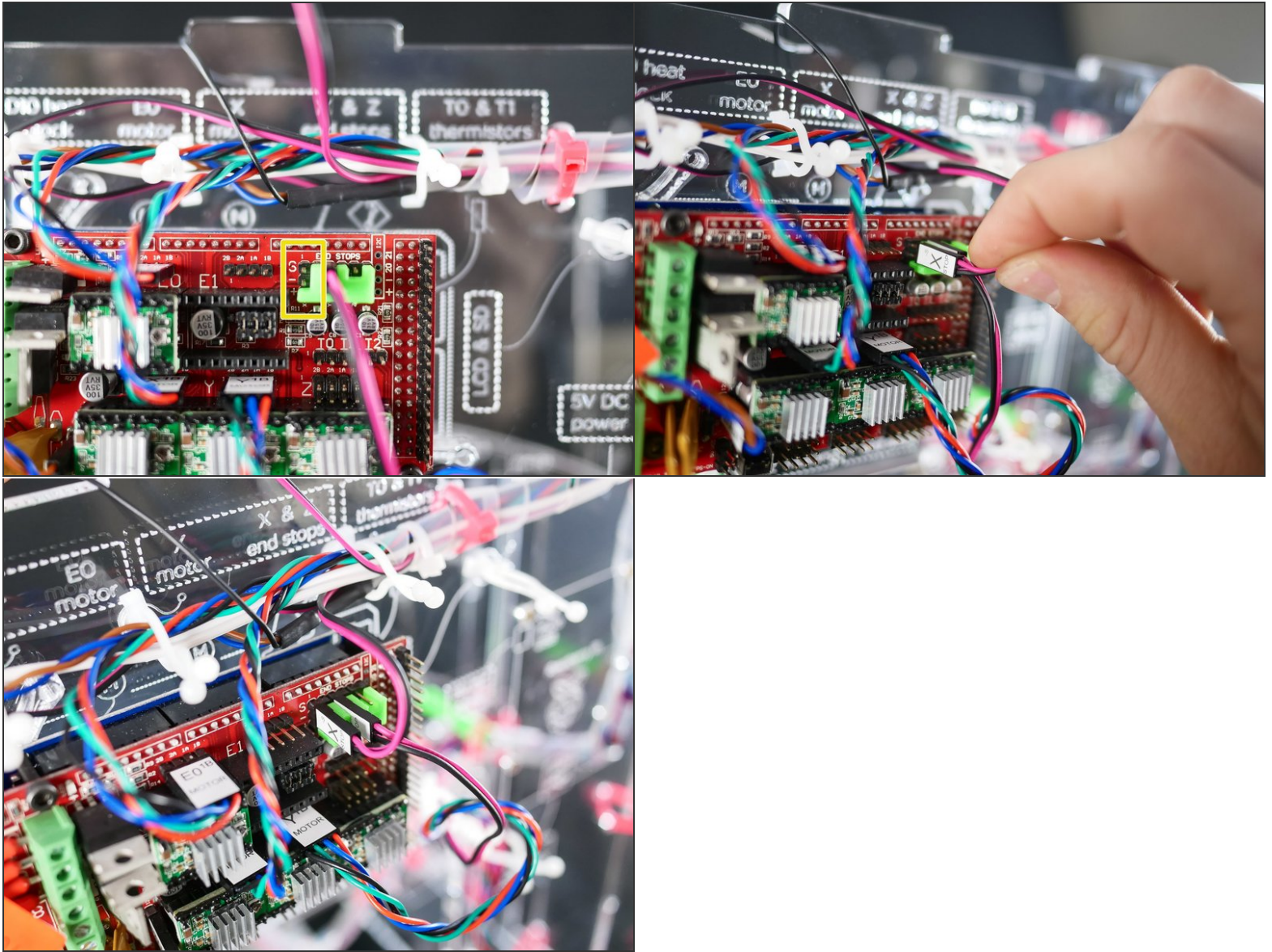




## Step 40

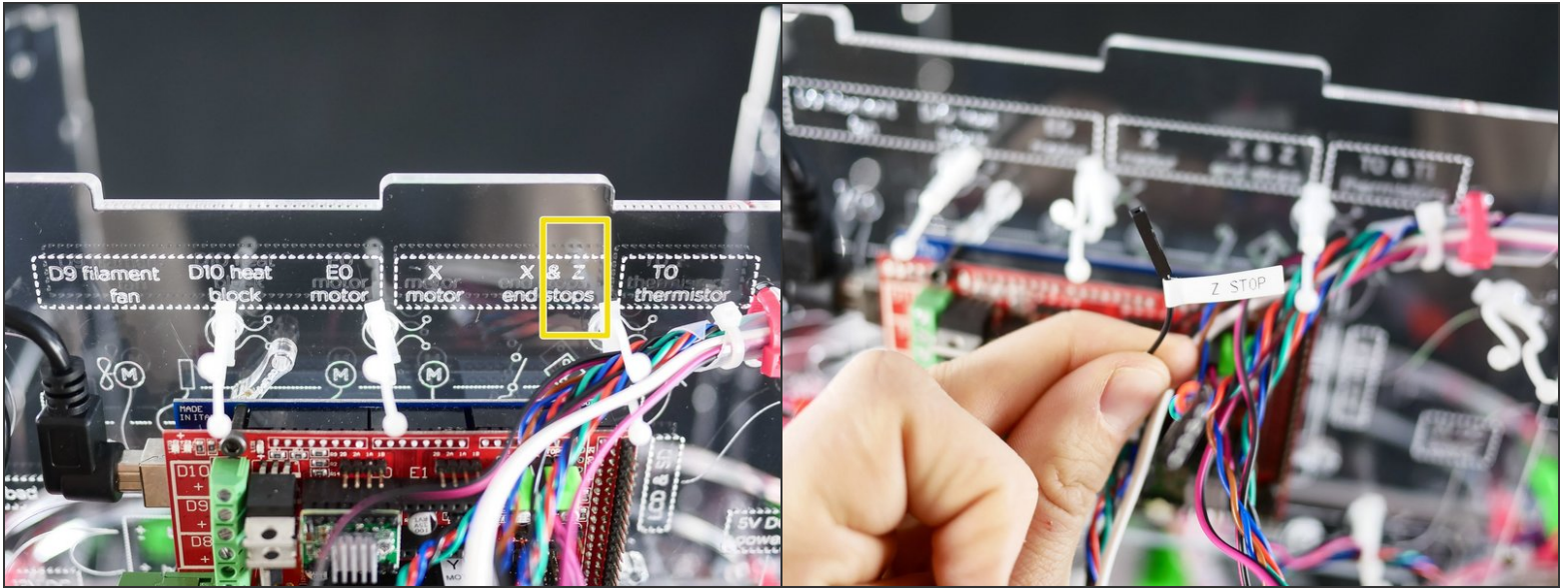


## Step 41

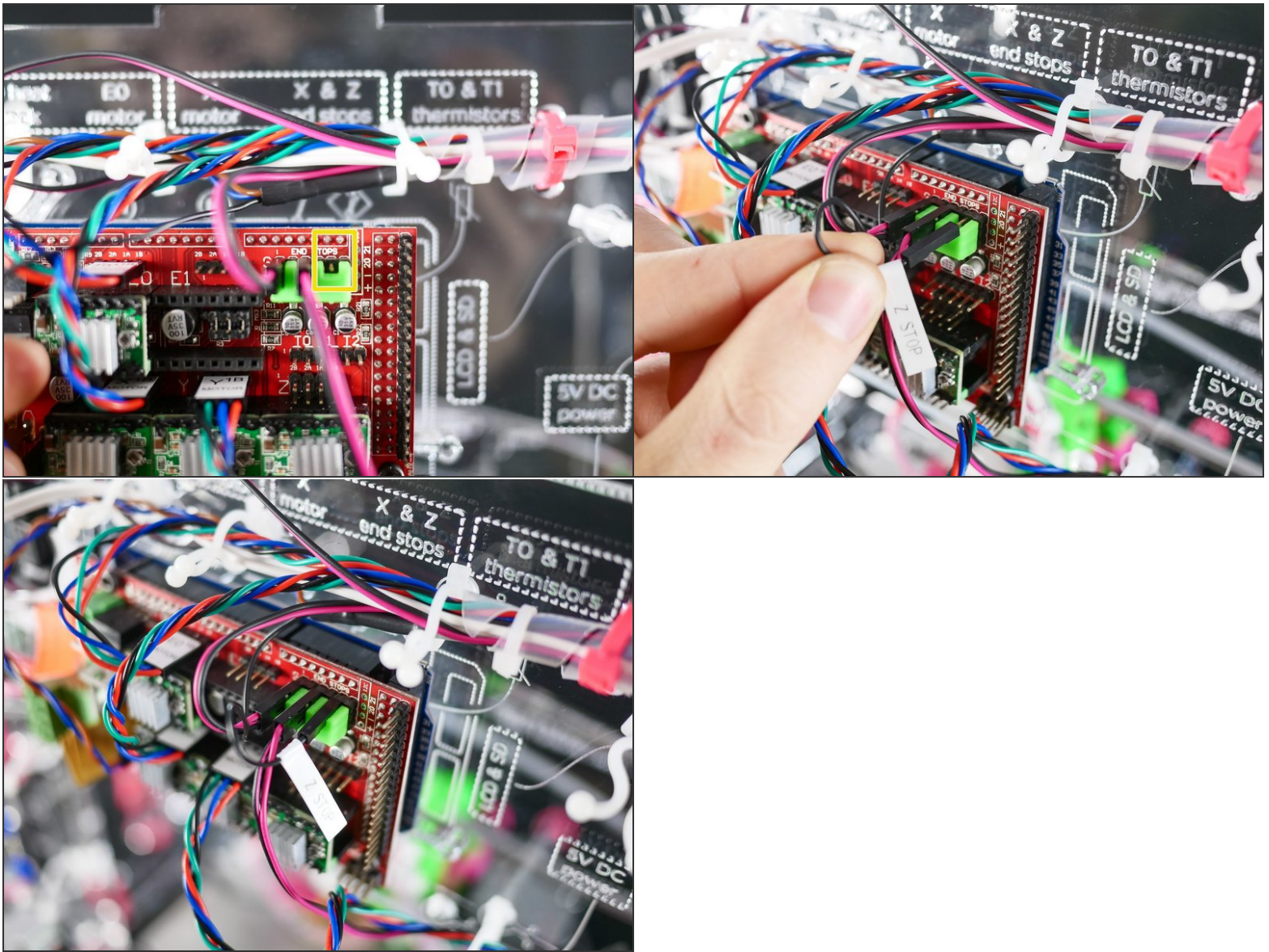




## Step 42

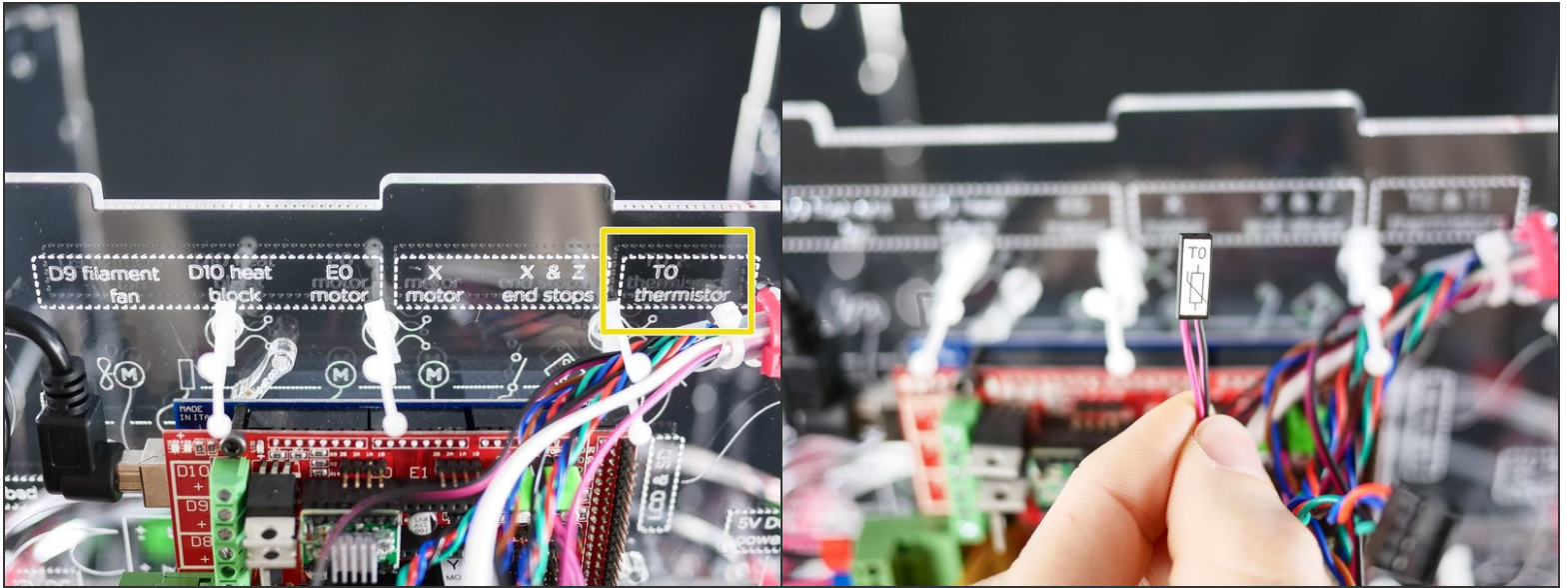


## Step 43

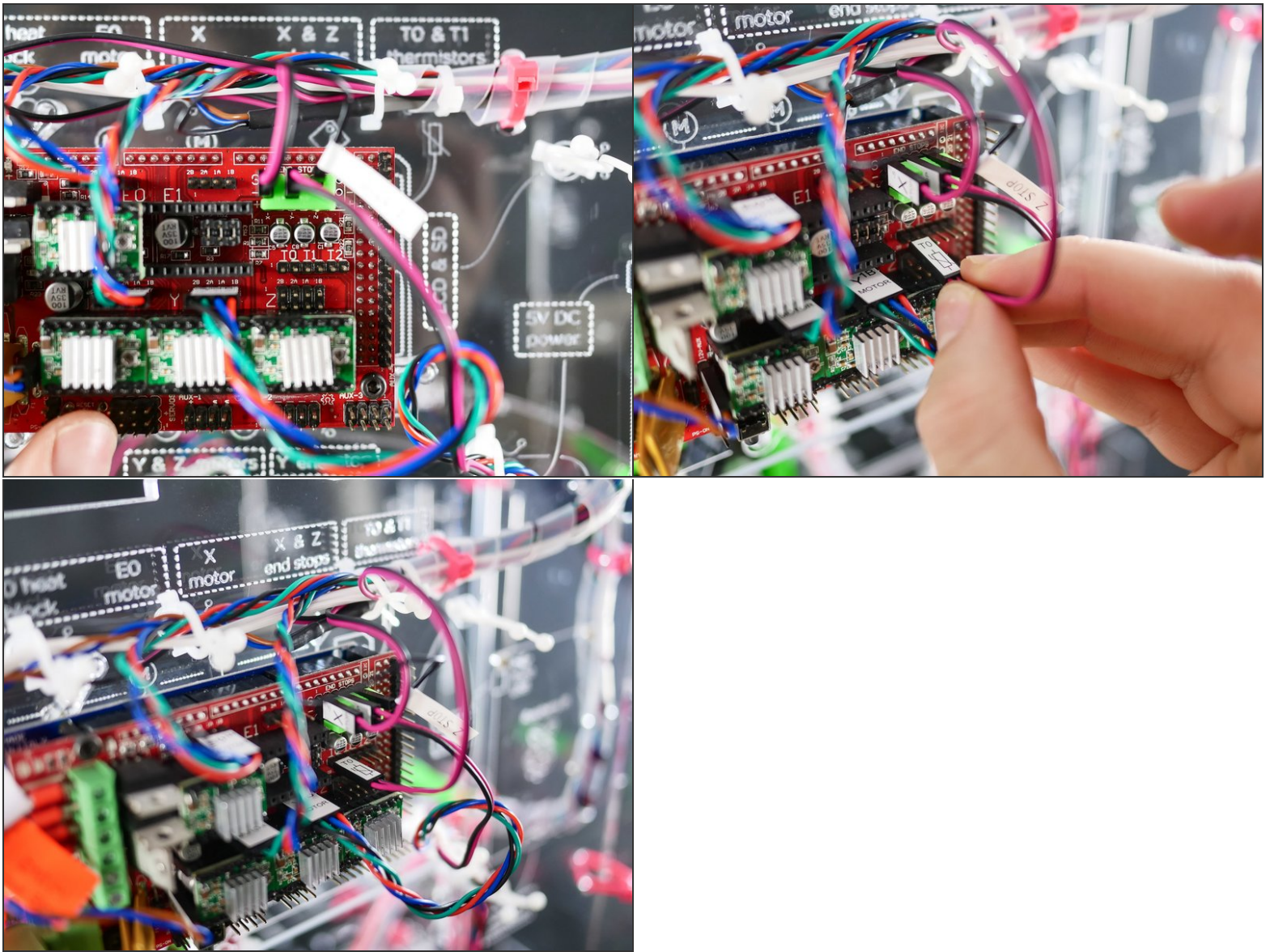




## Step 44



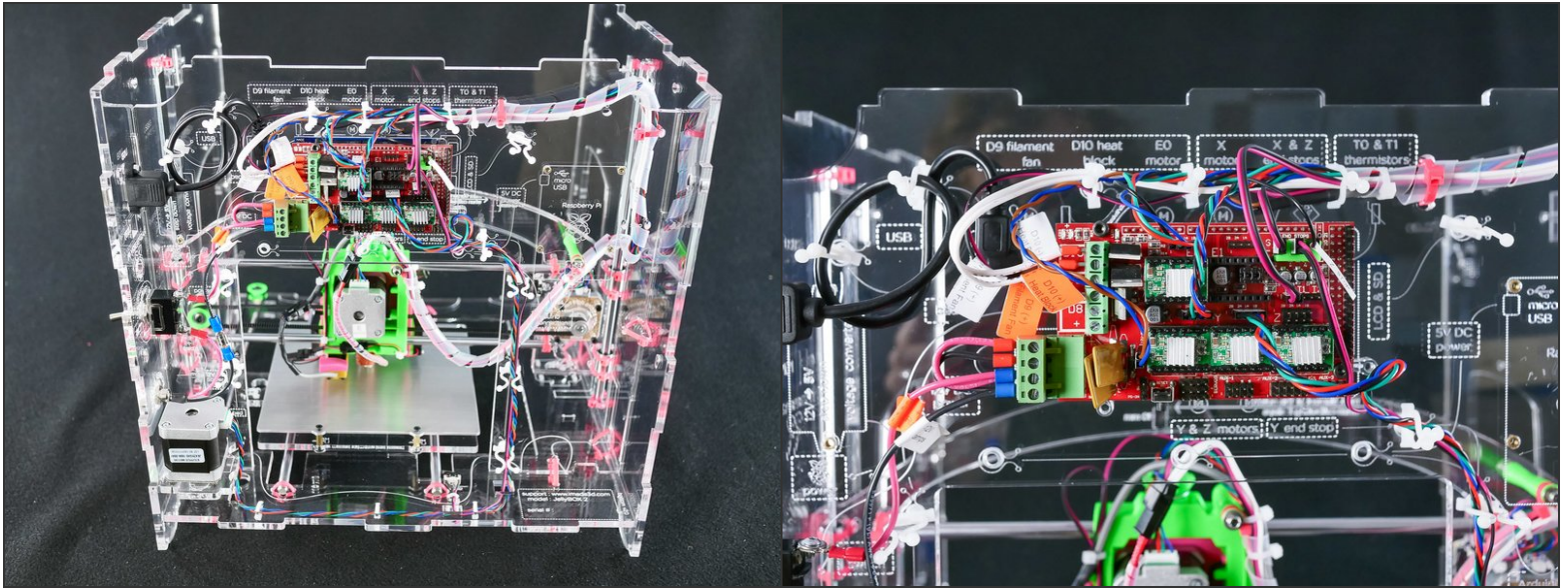
## Step 45



This document was generated on 2022-03-05 05:42:28 AM (MST).



## Step 46 — It's wired up!



You have installed the X assembly. This is arguably the longest and most complicated part of the whole build, so, kudos!

## What's Next?

Get back to the [← Makers Kit Build Flow](#) and continue with the next guide.