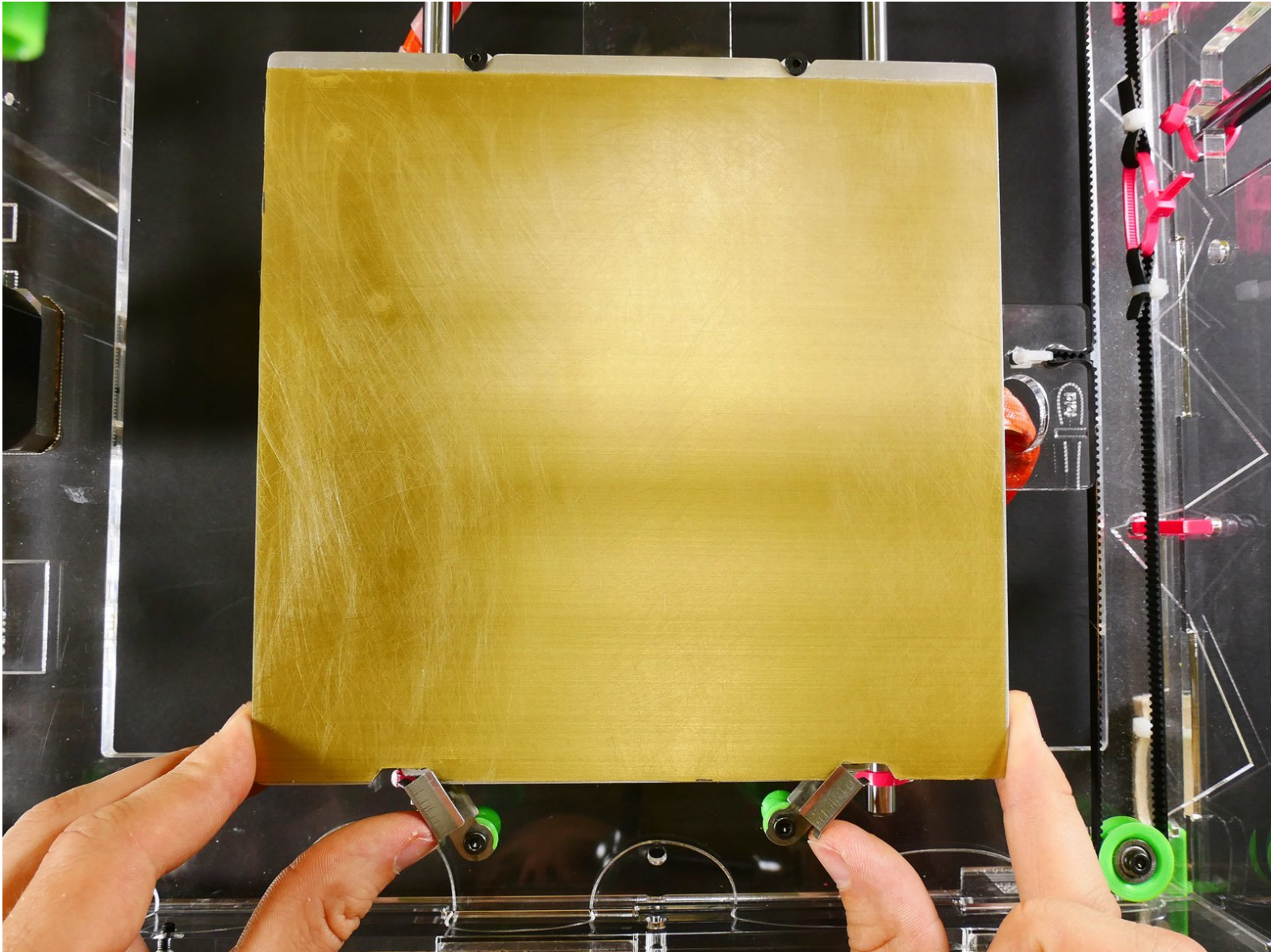




# Insert the Build Plate

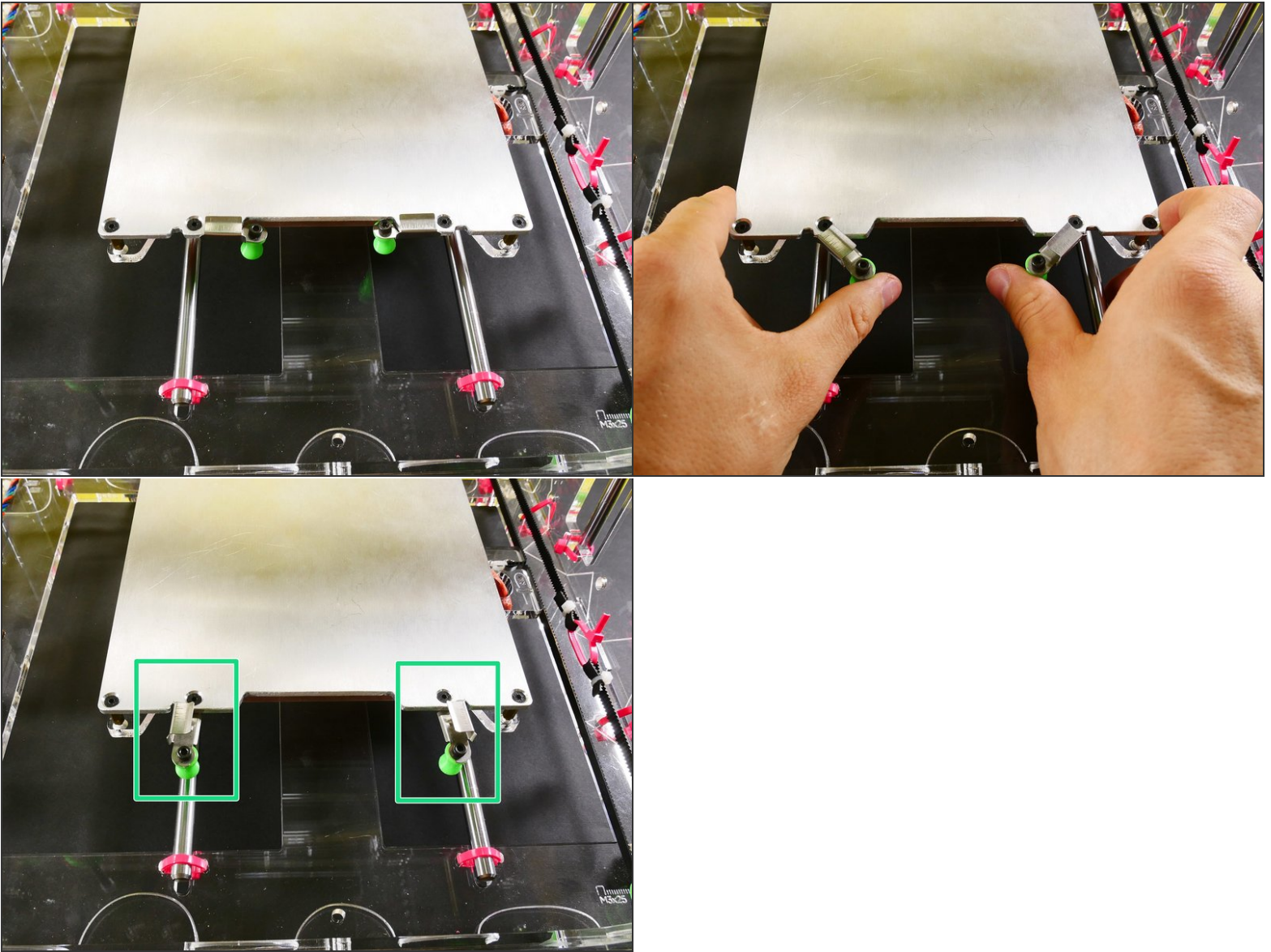


# INTRODUCTION

Not the guide you are looking for?

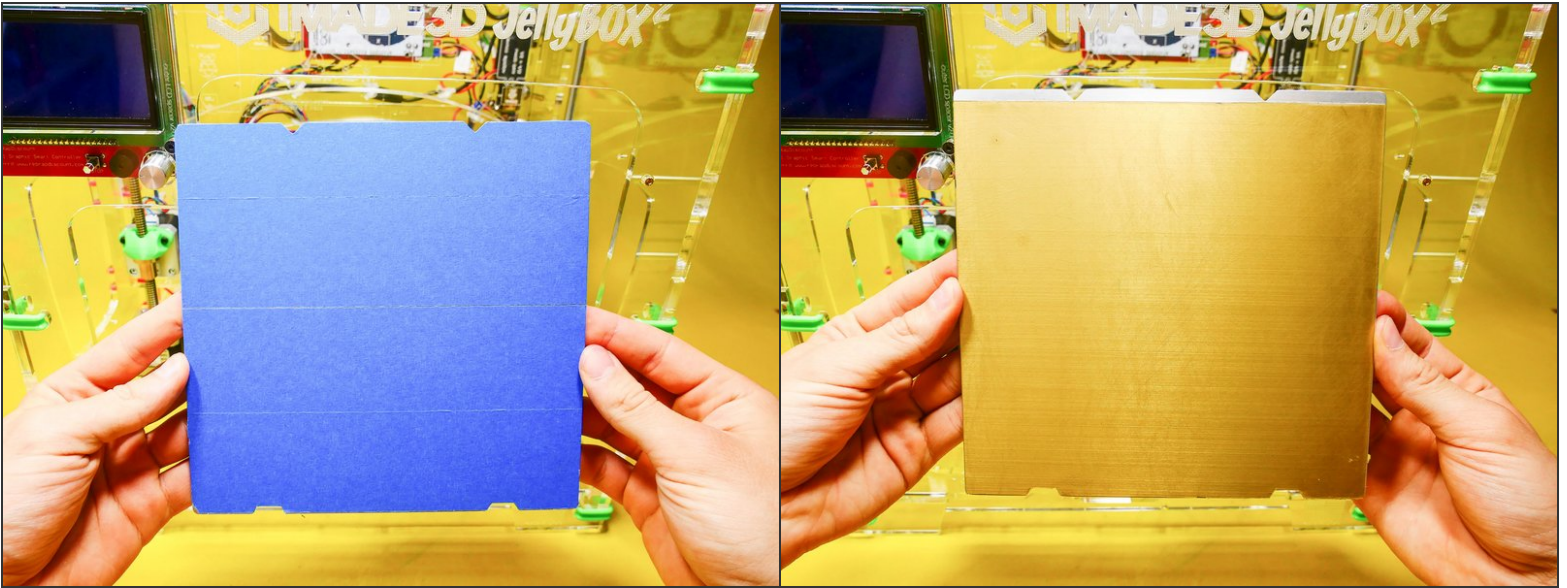
Go back to the [← Makers Kit Build Flow.](#)

## Step 1 — Insert the Build Plate



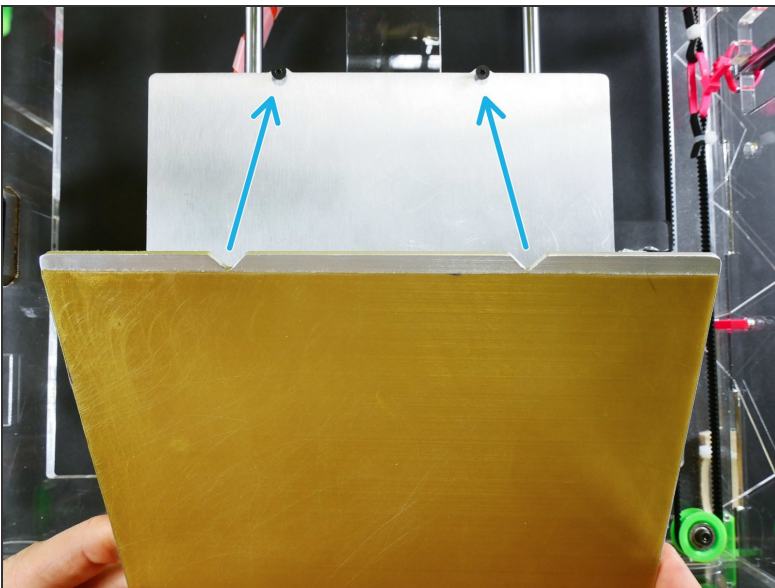


## Step 2

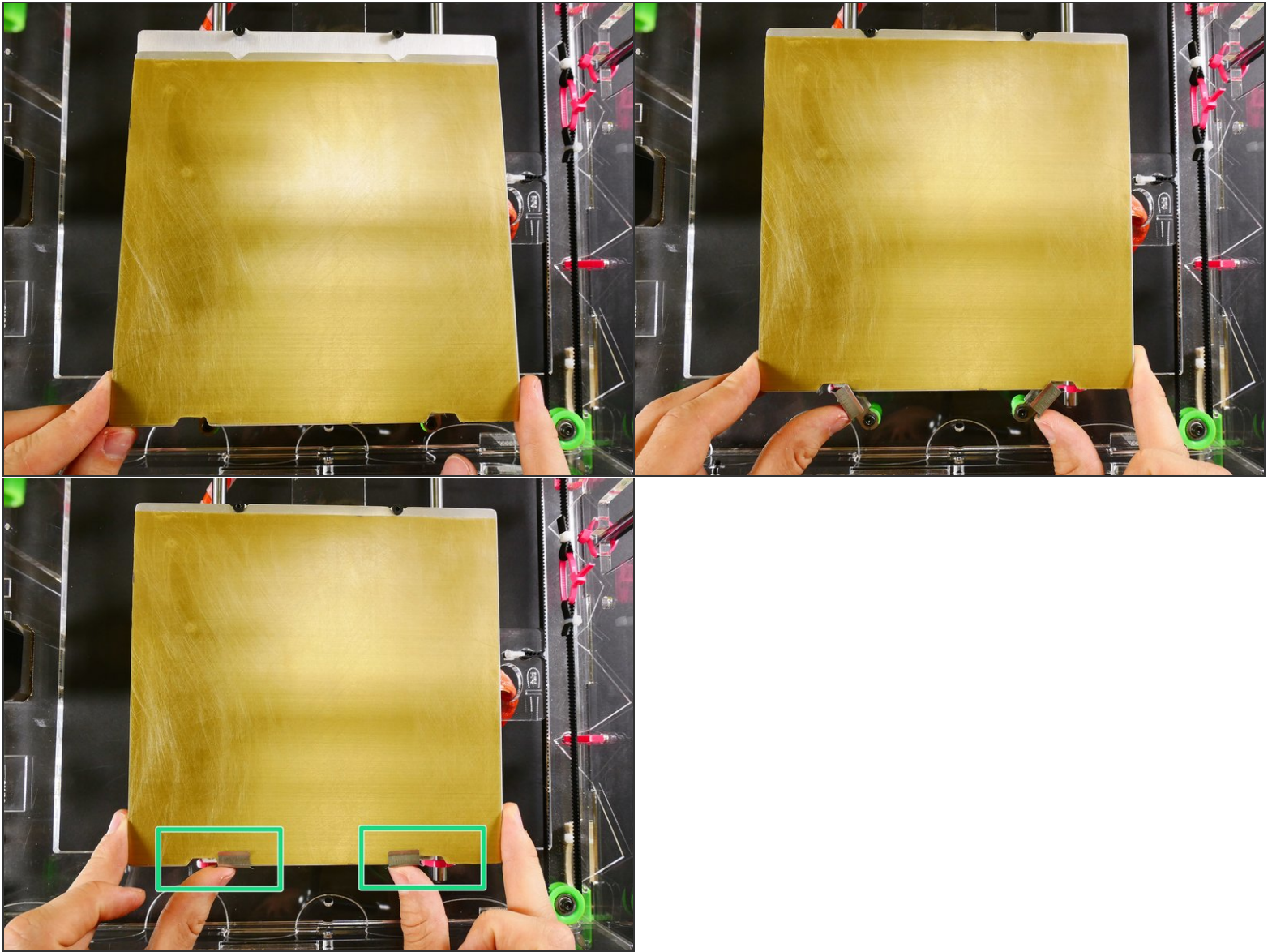


- *The procedure is the same no matter what build surface you use.*

## Step 3



## Step 4



## What's Next?

Get back to the [← Makers Kit Build Flow](#) and continue with the next guide.