



Front

Front of the frame

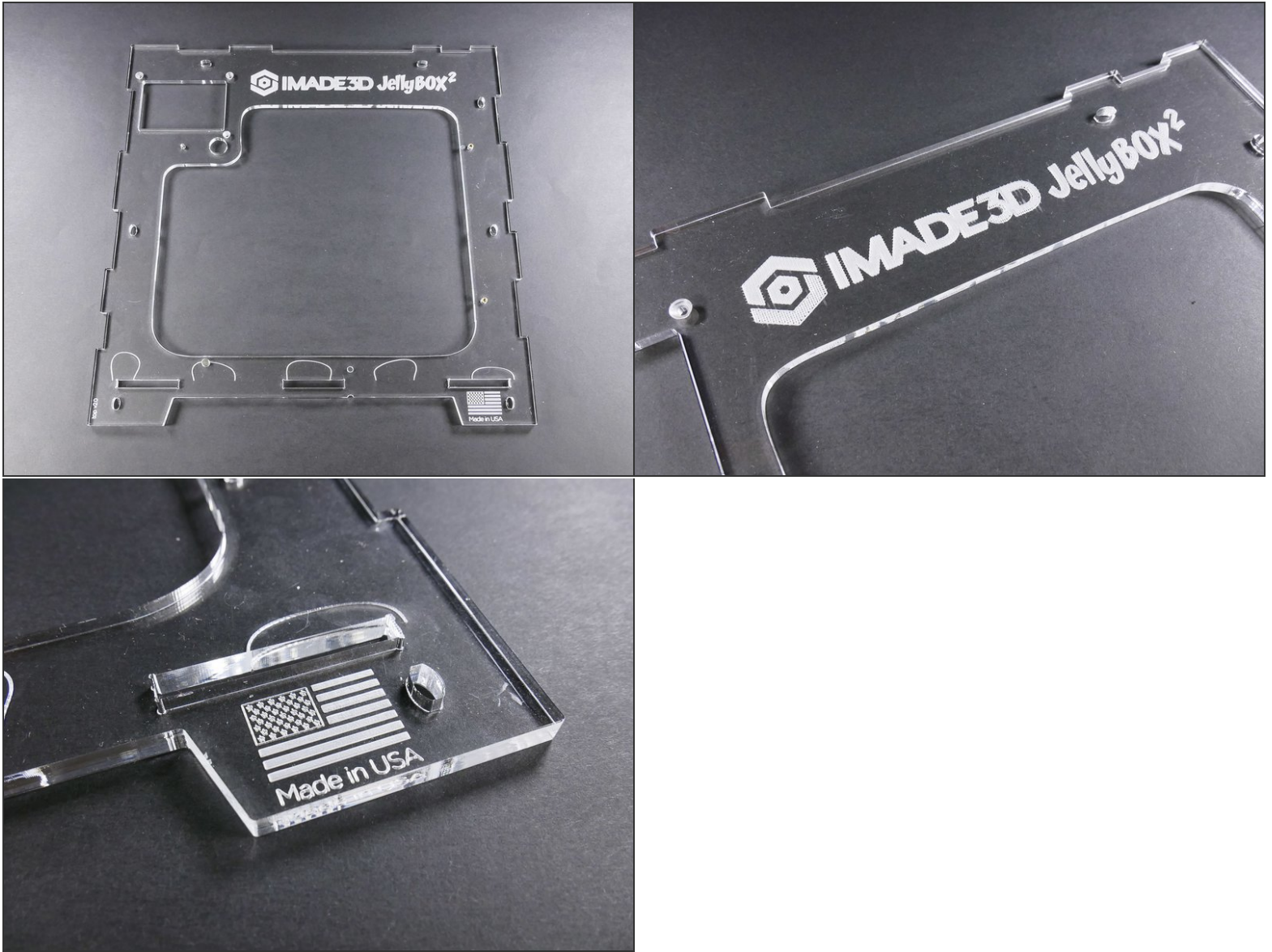


INTRODUCTION

Not the guide you are looking for?

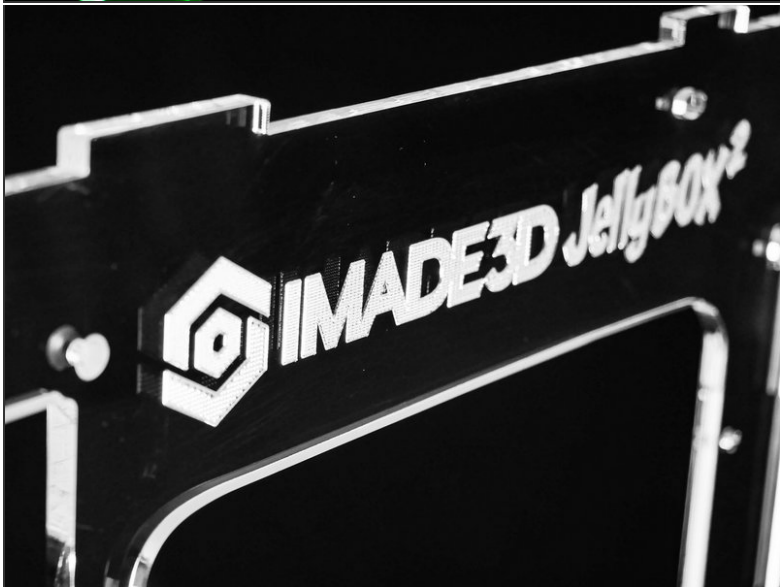
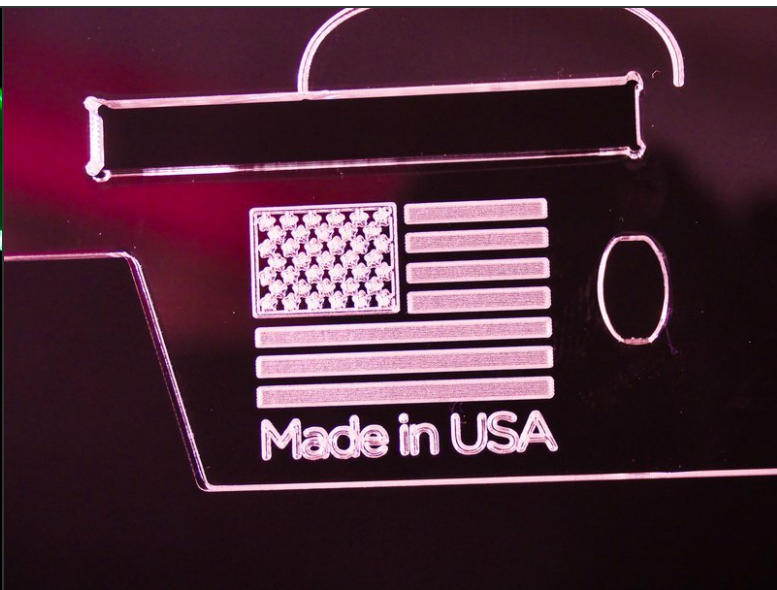
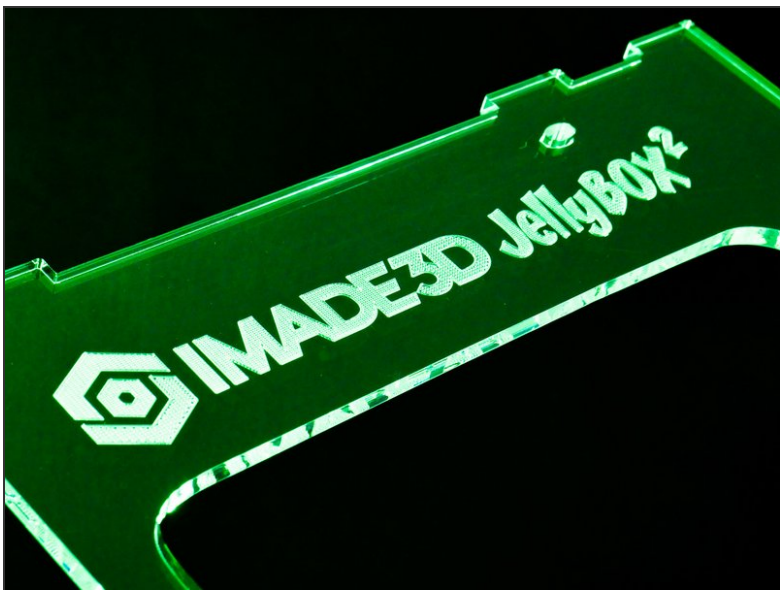
Go back to the [← Makers Kit Build Flow.](#)

Step 1 — ↳ Prepare the Front

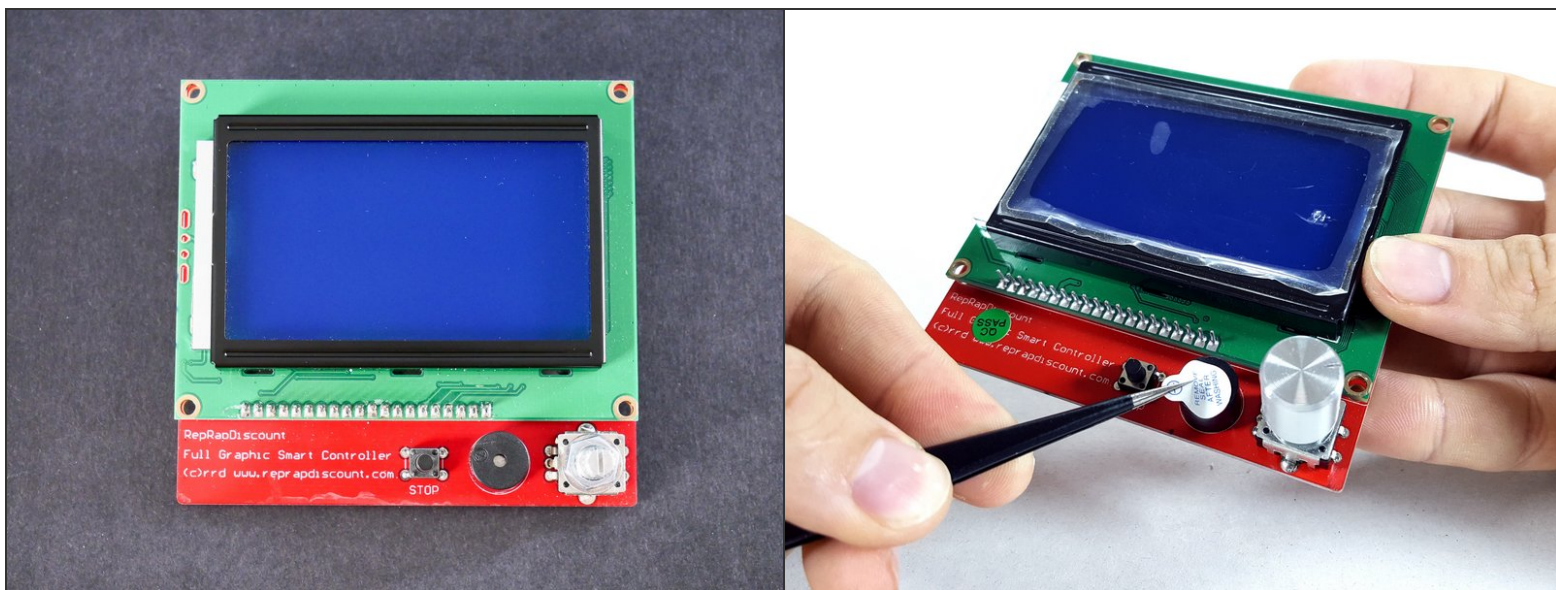


- Insert wisdom here.

Step 2



Step 3



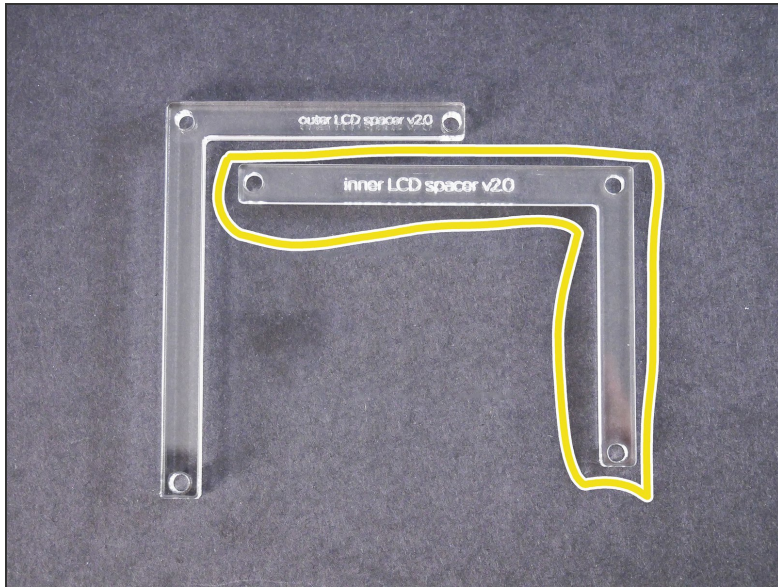
- If there's a sticker on your LCD, you are encouraged to remove it for aesthetic reasons.

Step 4

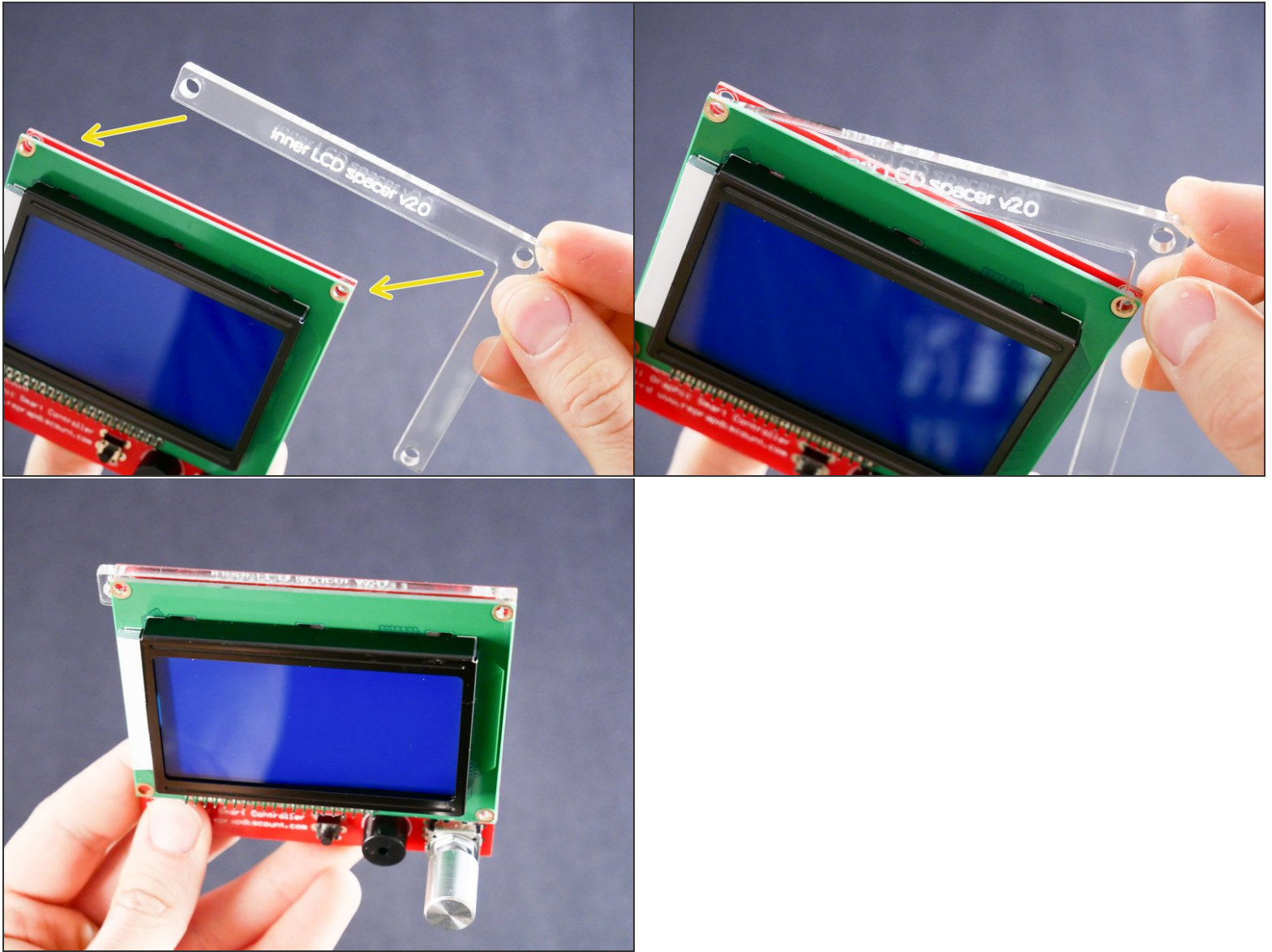


- M3x25 flat head

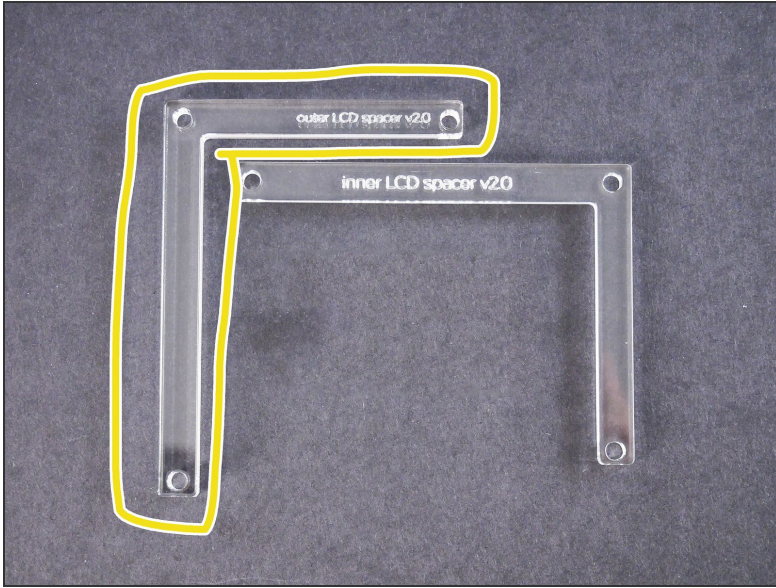
Step 5



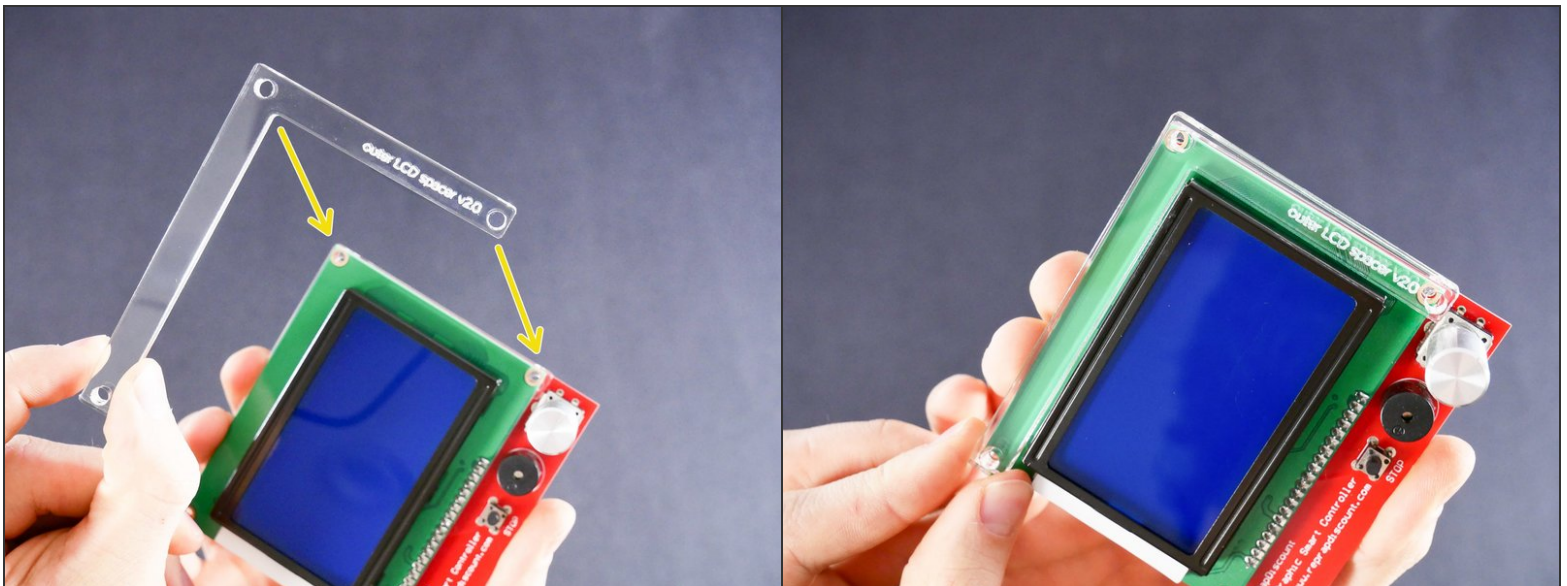
Step 6



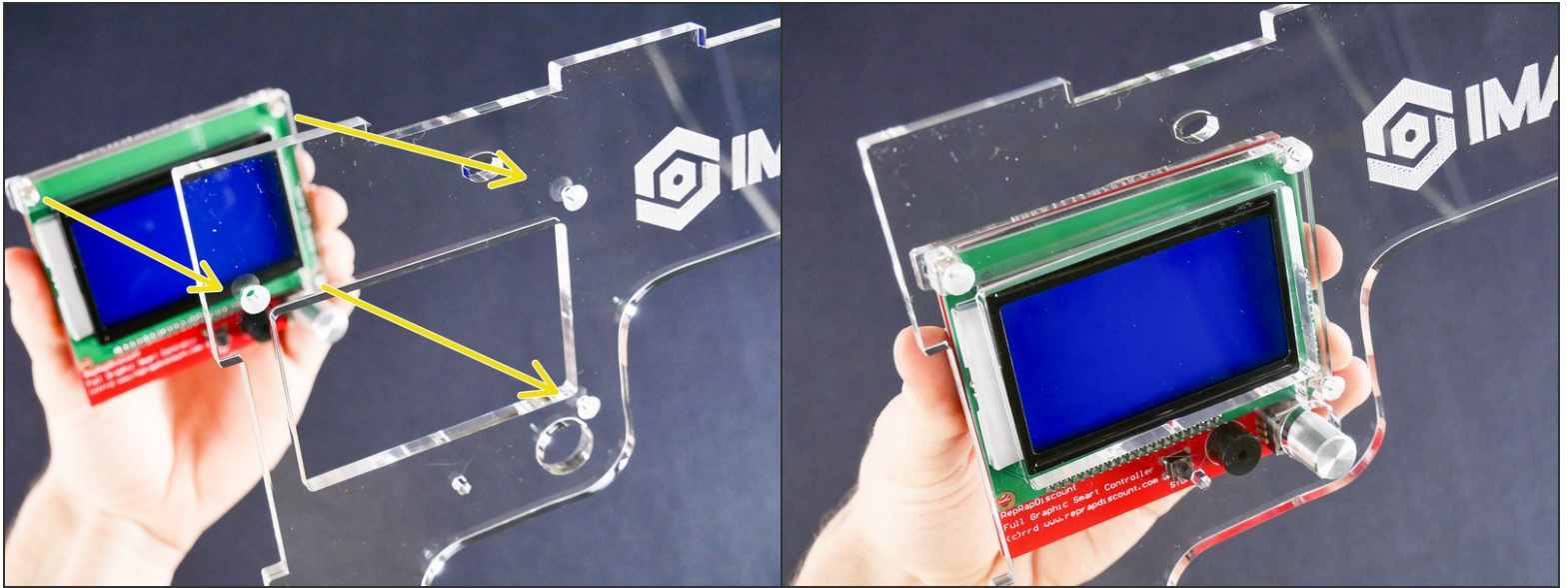
Step 7



Step 8



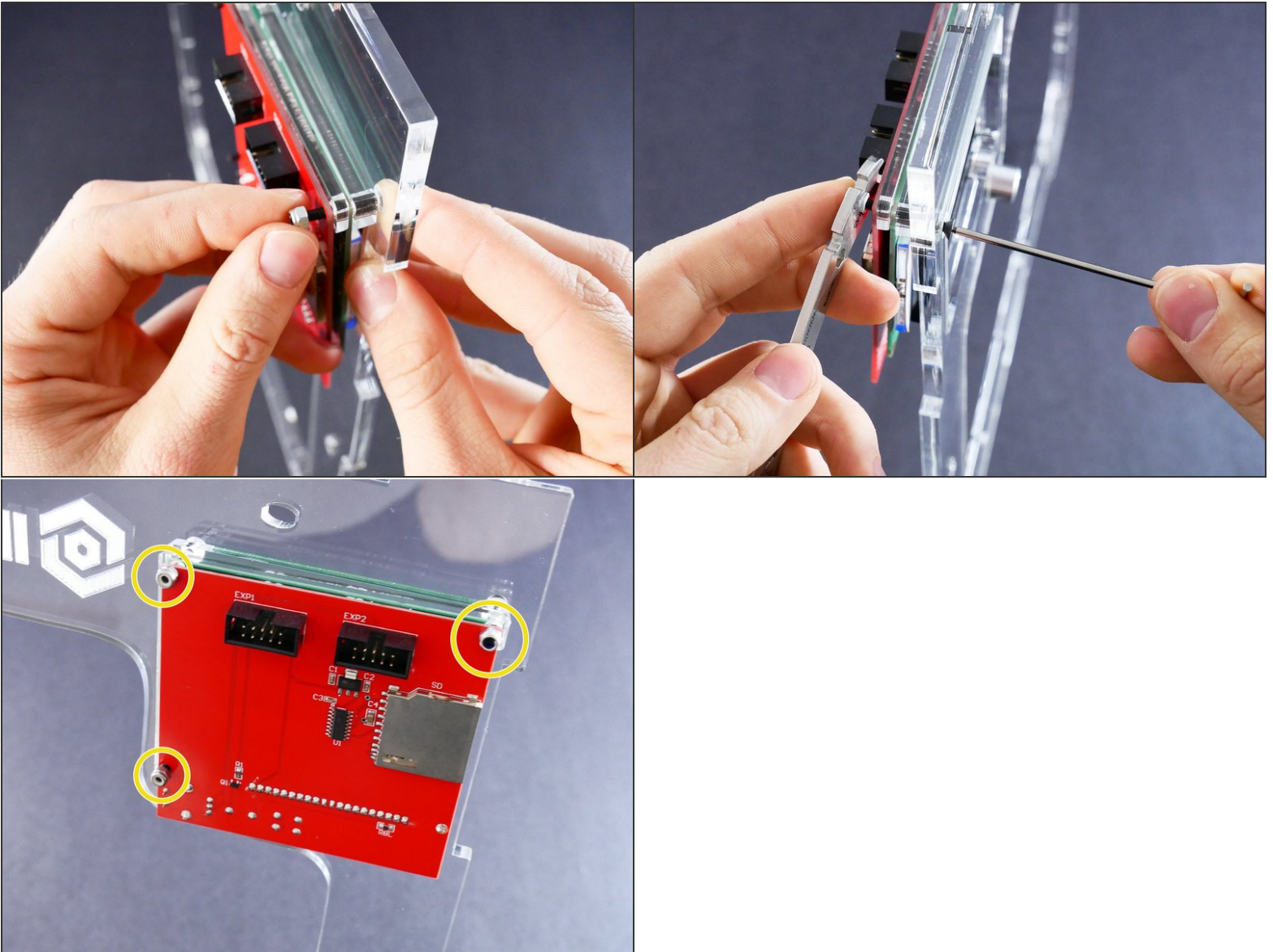
Step 9



Step 10

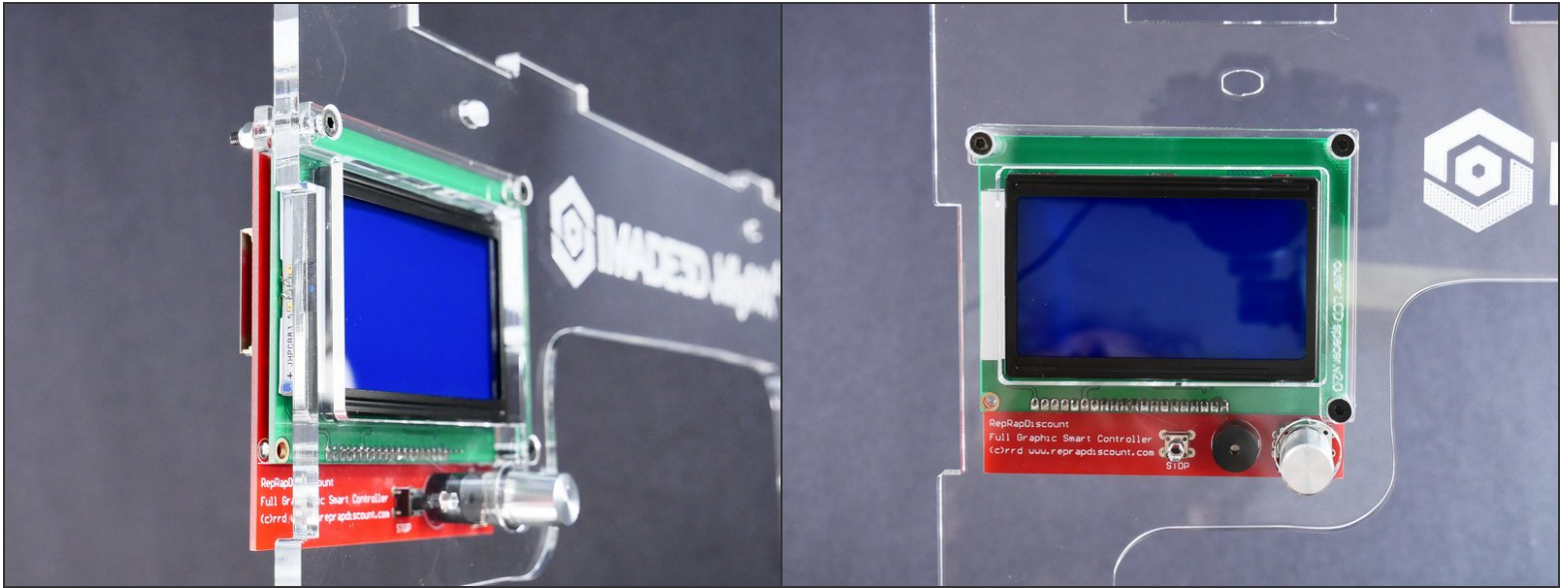


Step 11

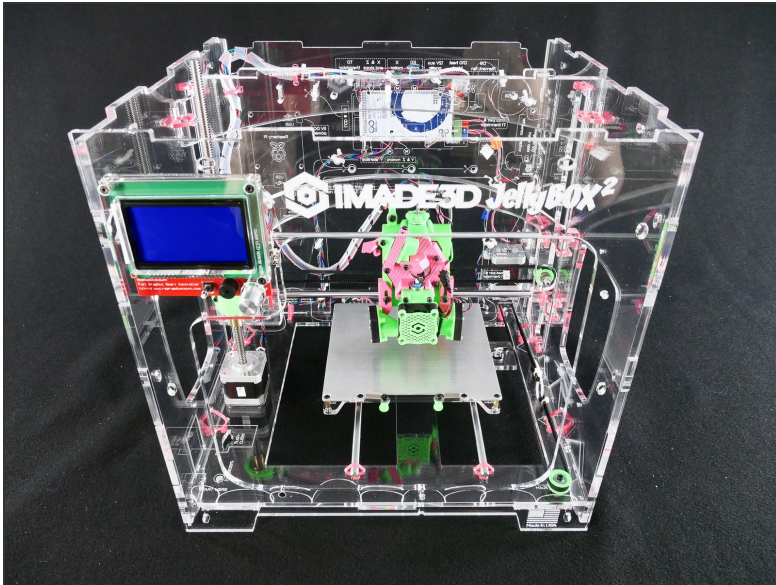


⚠ Do NOT over-tighten.

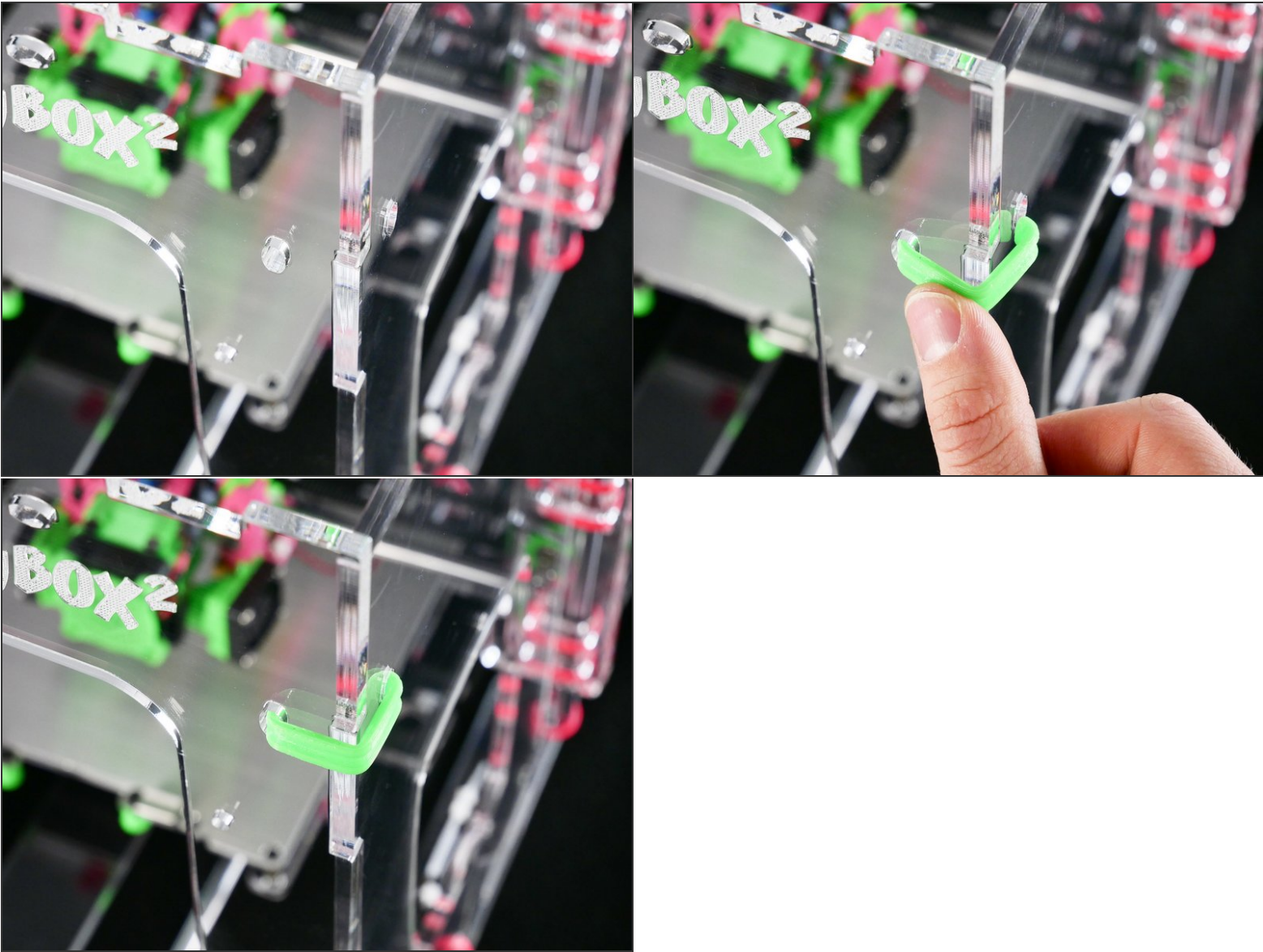
Step 12



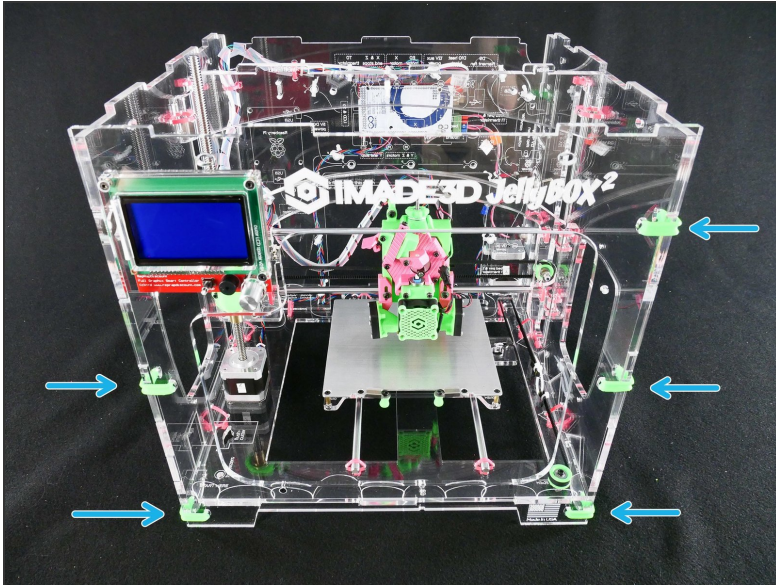
Step 13 — ↳ Install the Front



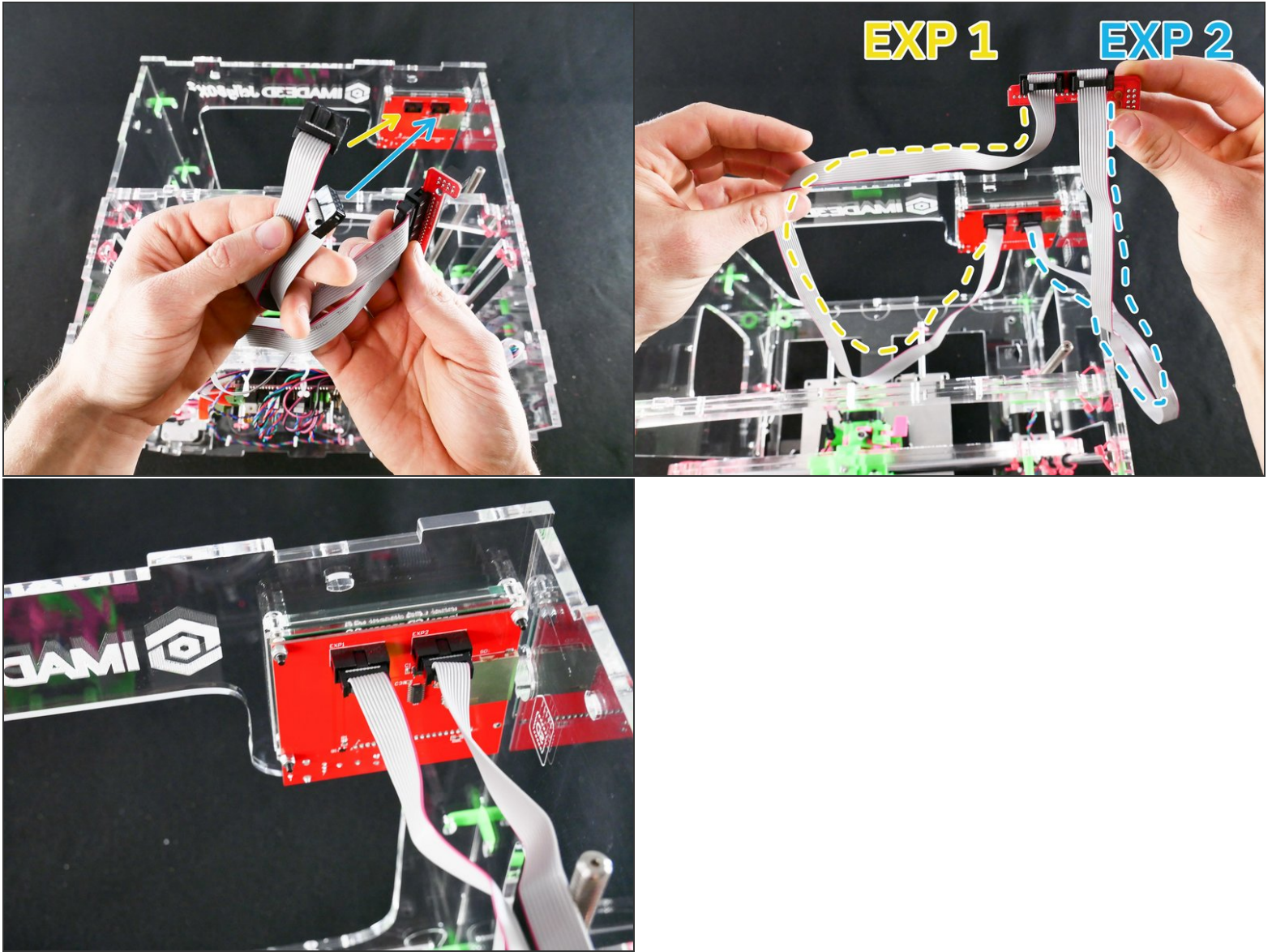
Step 14



Step 15

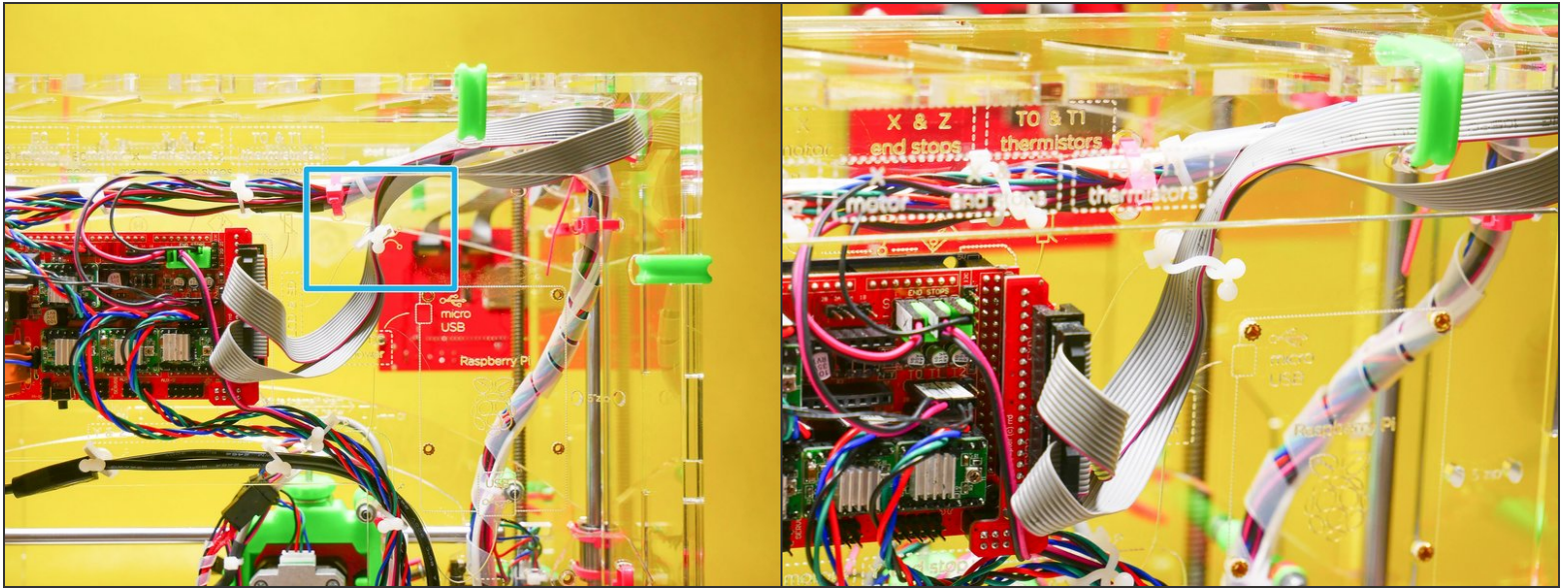


Step 16



- You need to match the connectors as shown, or the LCD will not work.
- There are a bit hard to read 'EXP1' and 'EXP2' markings around the connectors.
- ☑ If you mis-match the connectors, nothing bad happens! The LCD will not light up, but it will not get damaged. You can always just swap the connectors later when we test the whole printer.

Step 17



What's Next?

Get back to the [← Makers Kit Build Flow](#) and continue with the next guide.