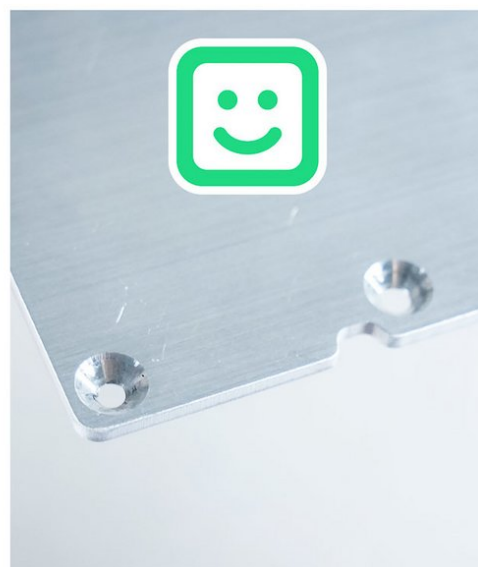
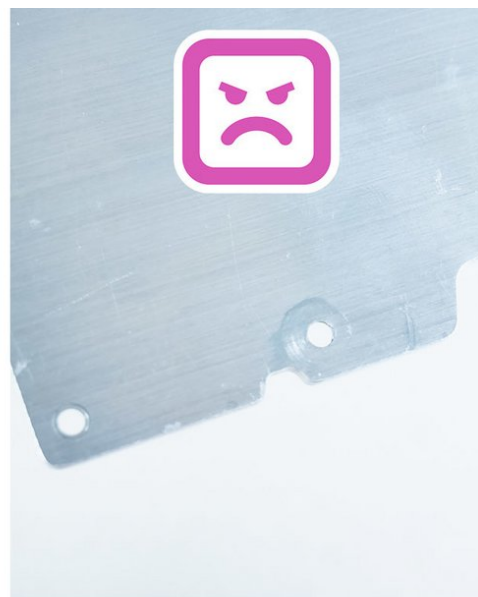
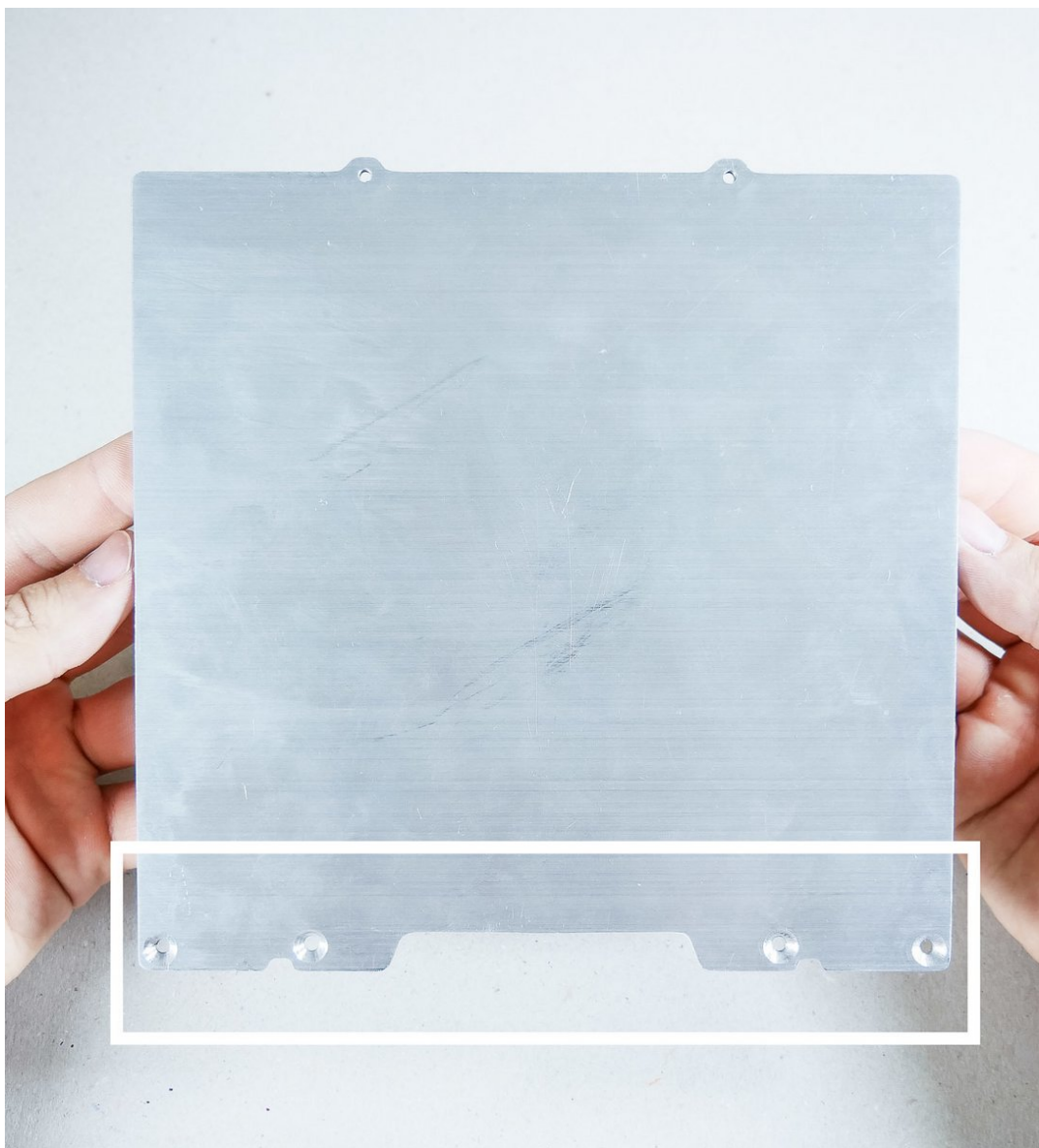
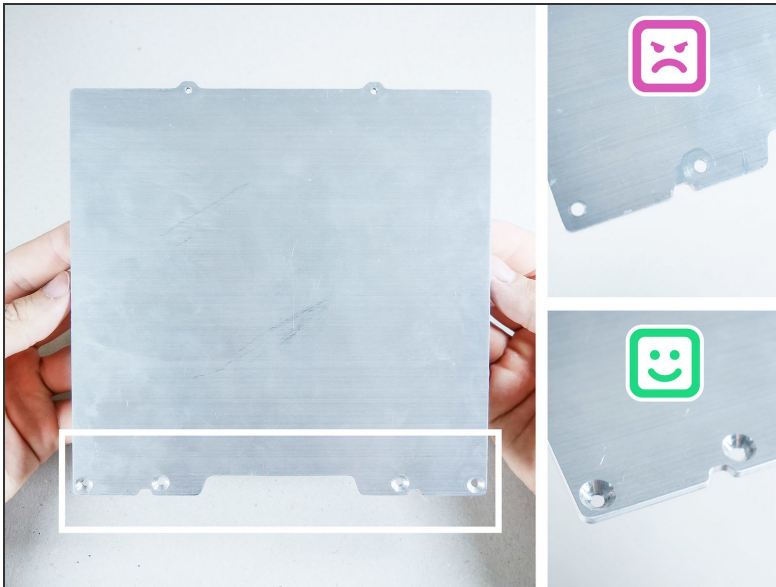




## ↳ Install the Front Clips



## Step 1 — ↳ Install the Front Clips

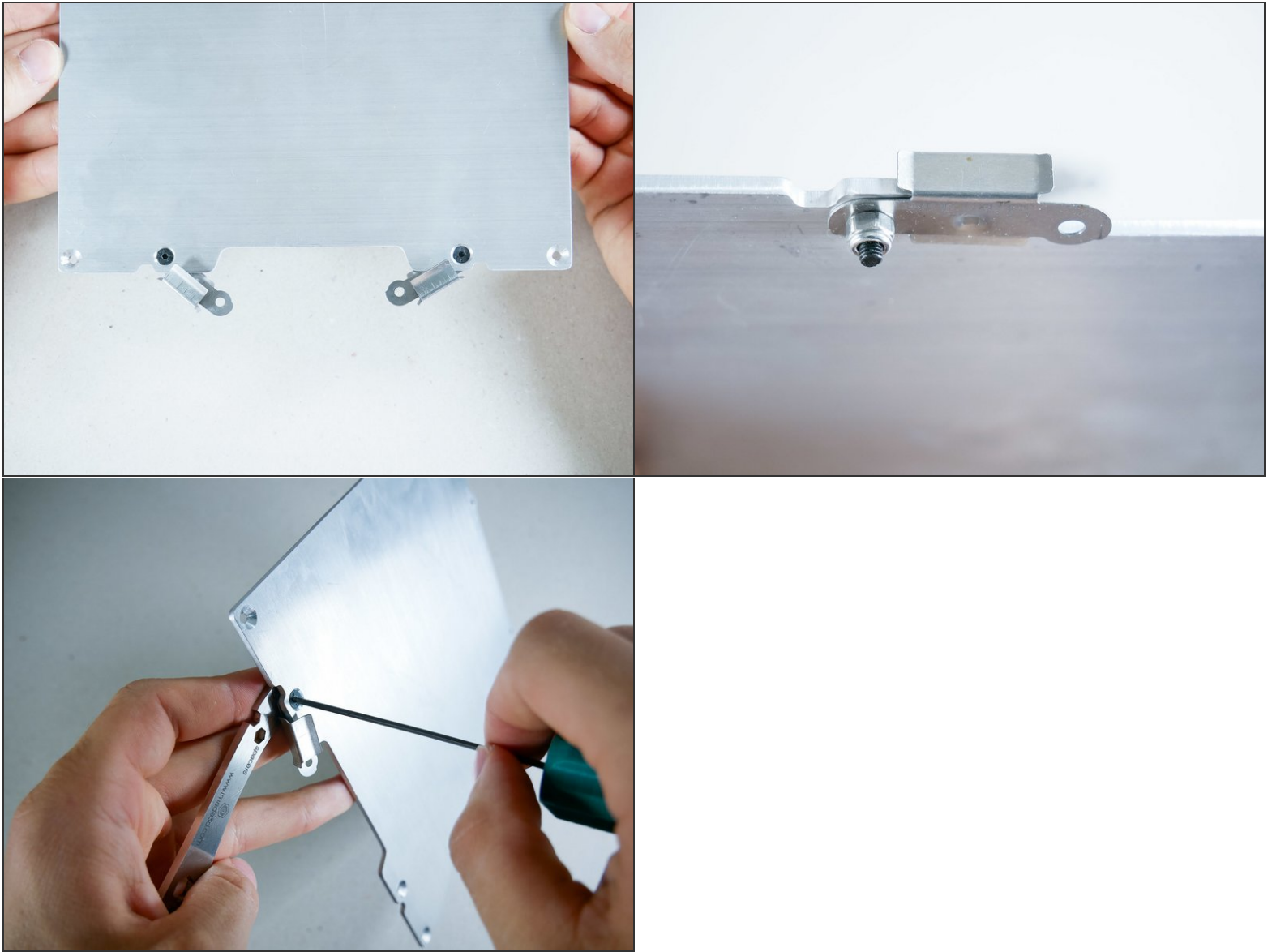


## Step 2



- M3x10 flat head screws (2)
- M3 lock nuts (2)

## Step 3



⚠ Leave the screw a bit loose so the clips can swivel.

## Step 4



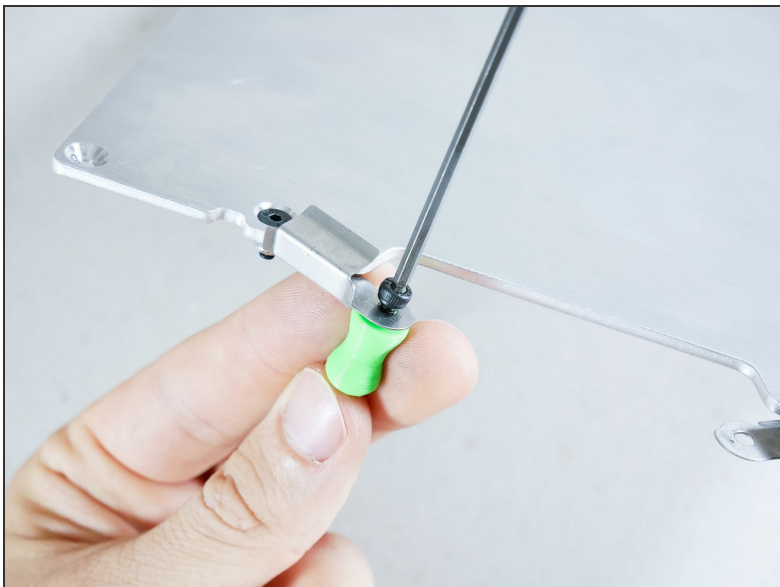
- ► Video: Clips Swivel (5s, no narration)
- The clips should swivel like so.

## Step 5





## Step 6



## Step 7 — Looking good!

