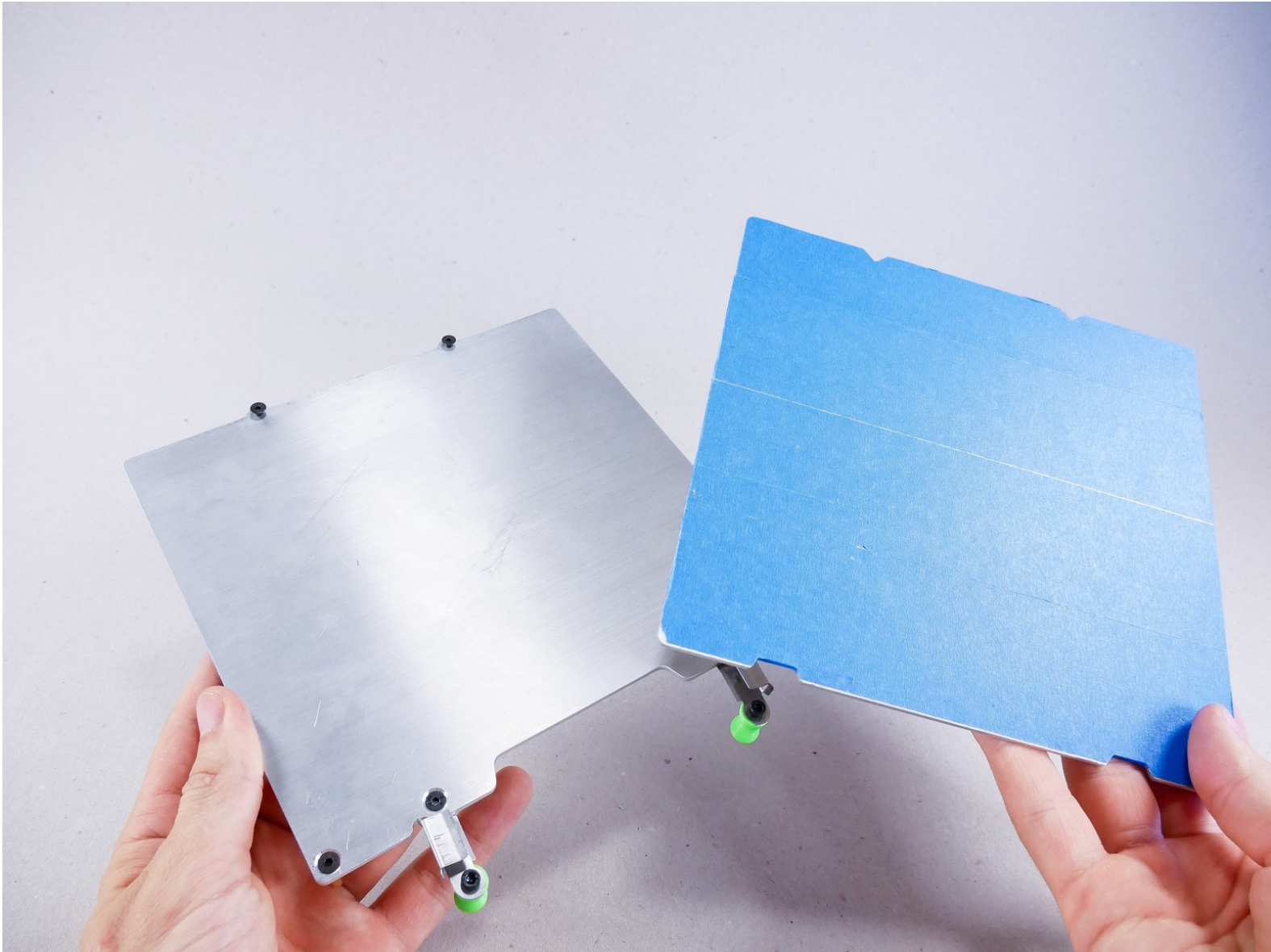
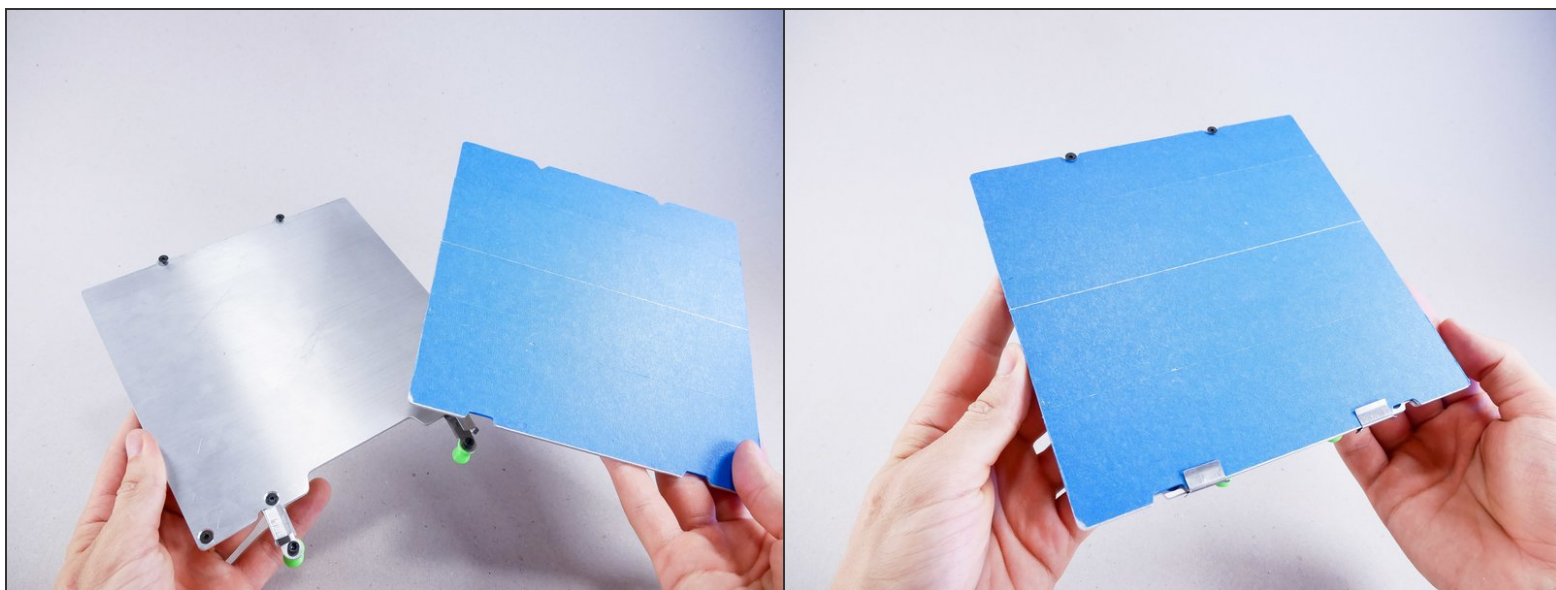


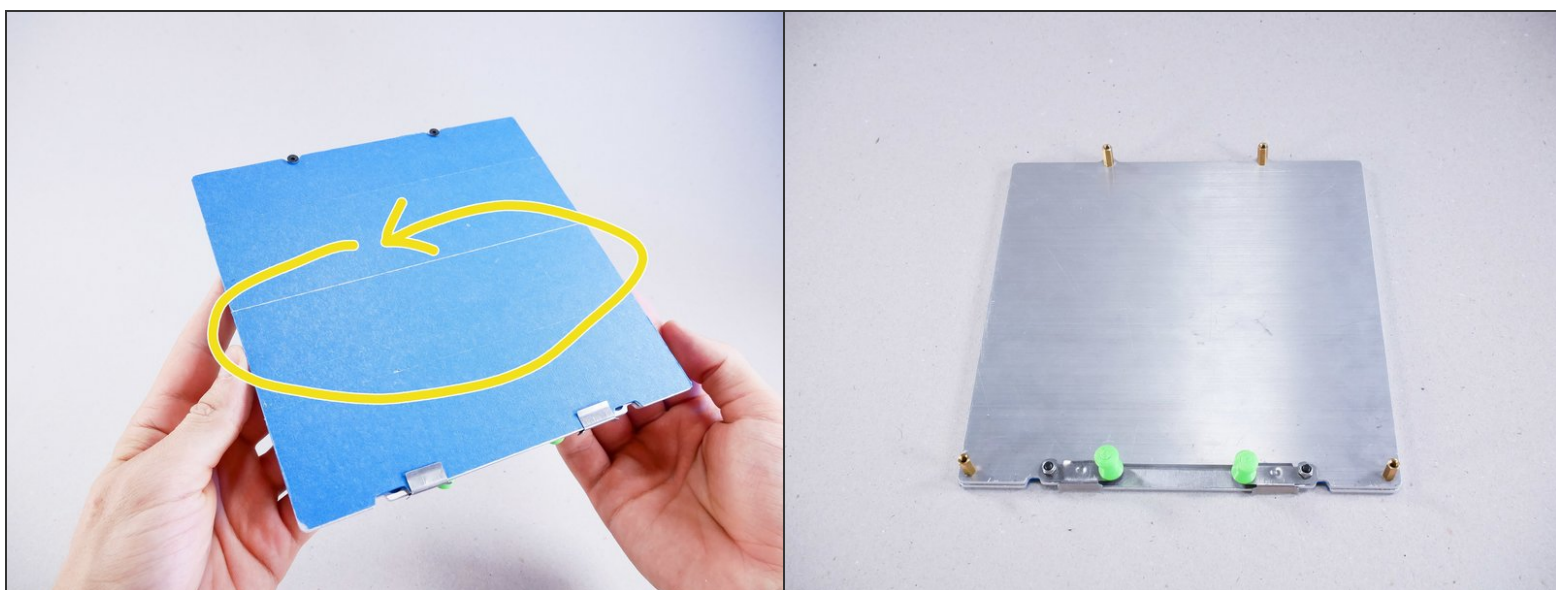


↳ Install the Heater Pad



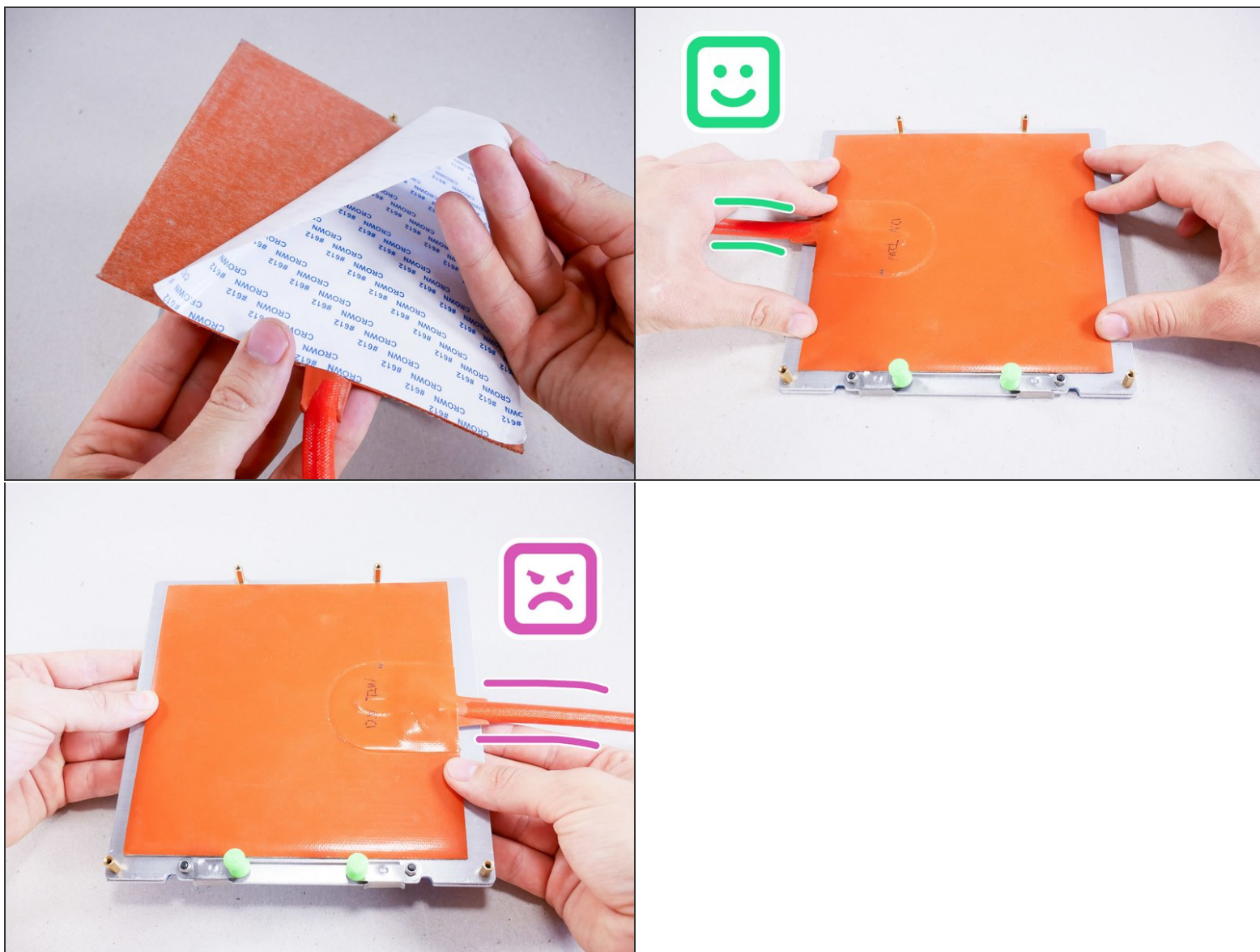
Step 1 — ↳ Install the Heater Pad

- Install the build plate.

Step 2

- Insert wisdom here.

Step 3



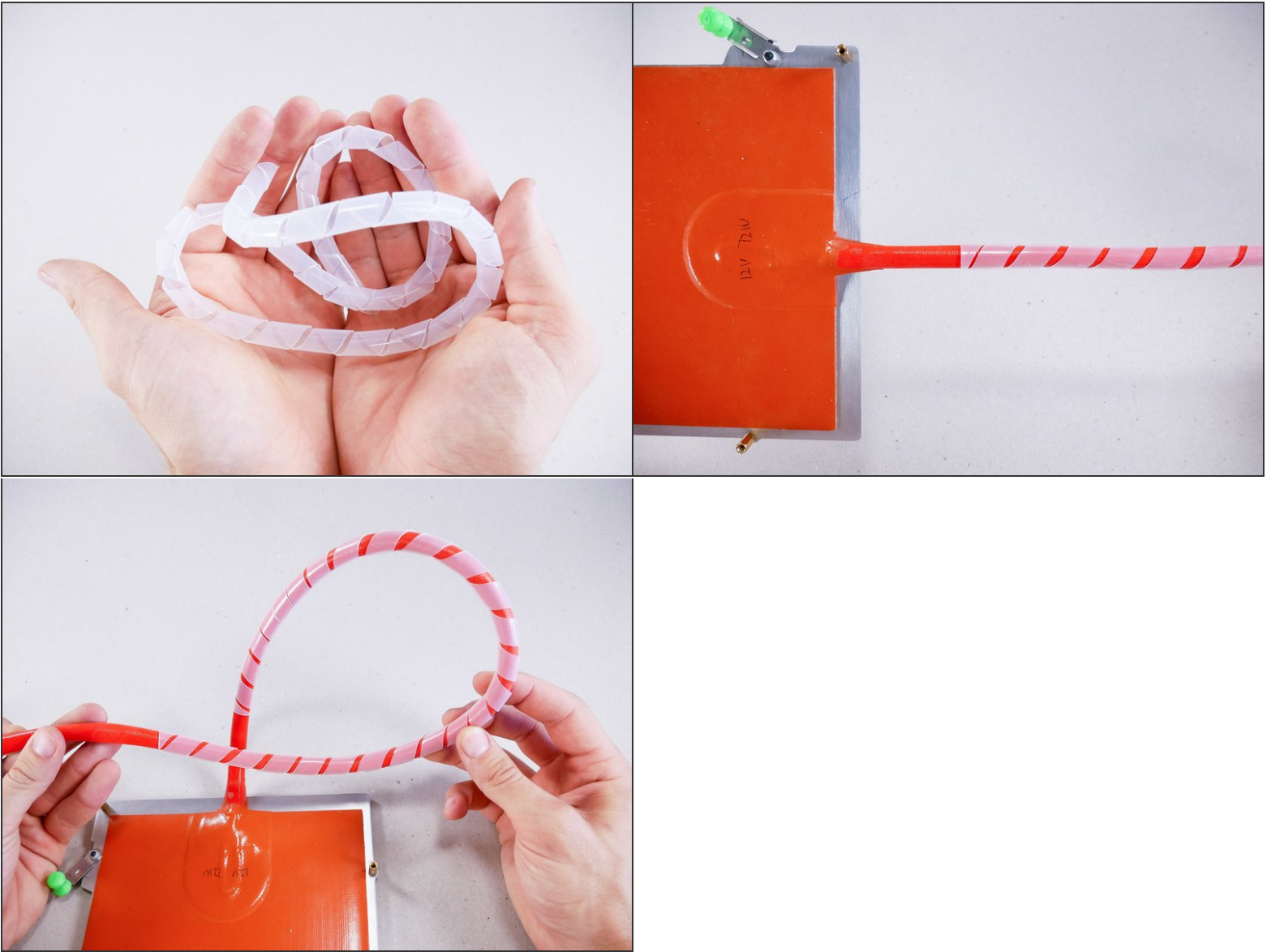
- The heater pad may be slightly larger than the bed. The outside edge is just silicone - you can trim it with a knife after installation.

Step 4



- Firmly press the silicone heater pad onto the aluminum base.

Step 5



- Wrap the wiring in spiral wrap for protection, and you're done!