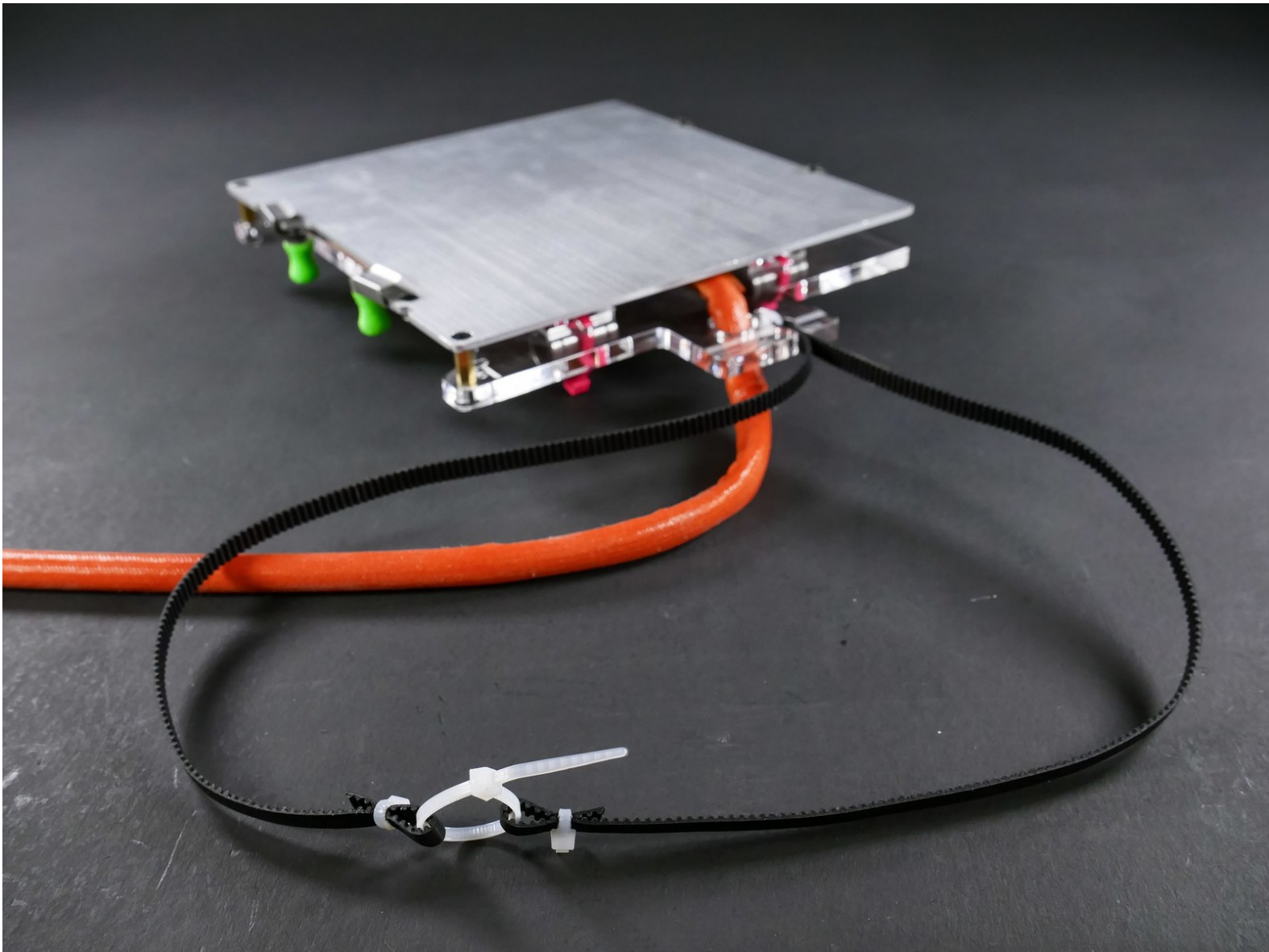




Y Assembly (makers hot)



INTRODUCTION

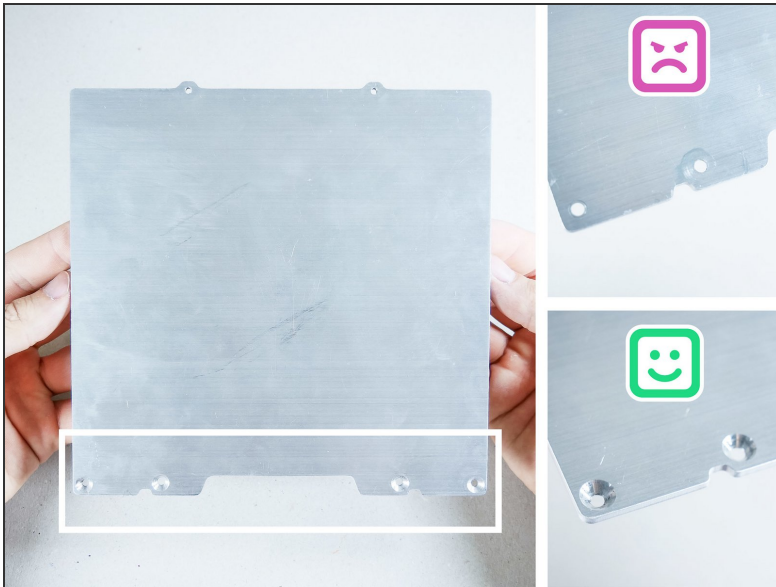
Not the guide you are looking for?

Go back to the [← Makers Kit Build Flow.](#)

=====

Note: In some sections of this guide, a regular non-heated (cold) bed is pictured. This is always of no consequence and when the steps are identical. No worries.

Step 1 — ↳ Install the Front Clips

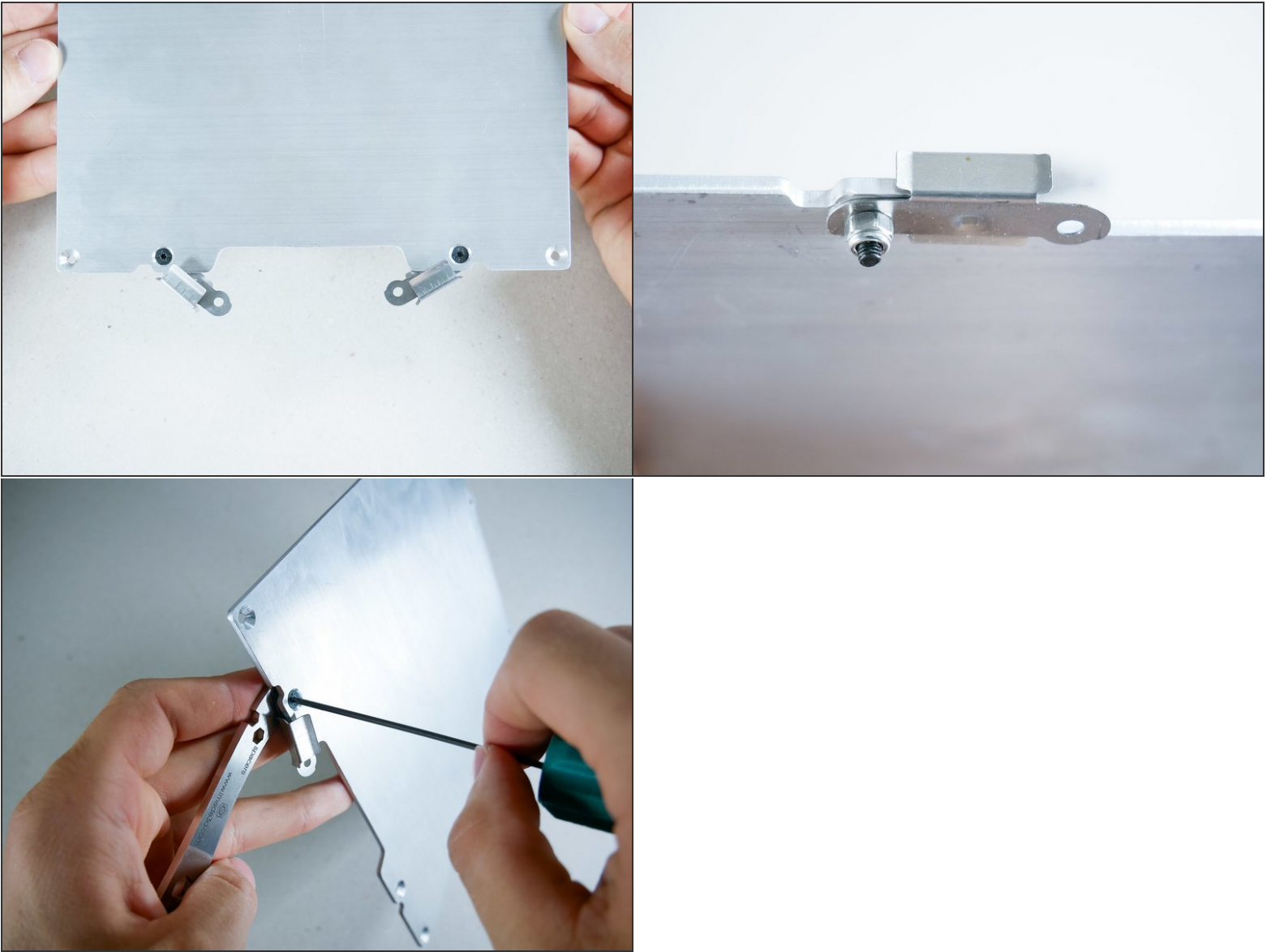


Step 2



- M3x10 flat head screws (2)
- M3 lock nuts (2)

Step 3



 Leave the screw a bit loose so the clips can swivel.

Step 4

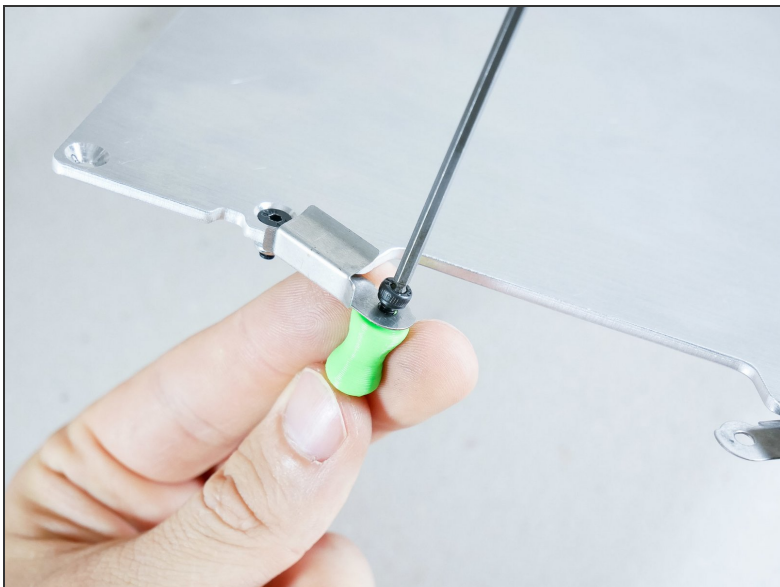


- ► Video: Clips Swivel (5s, no narration)
- The clips should swivel like so.

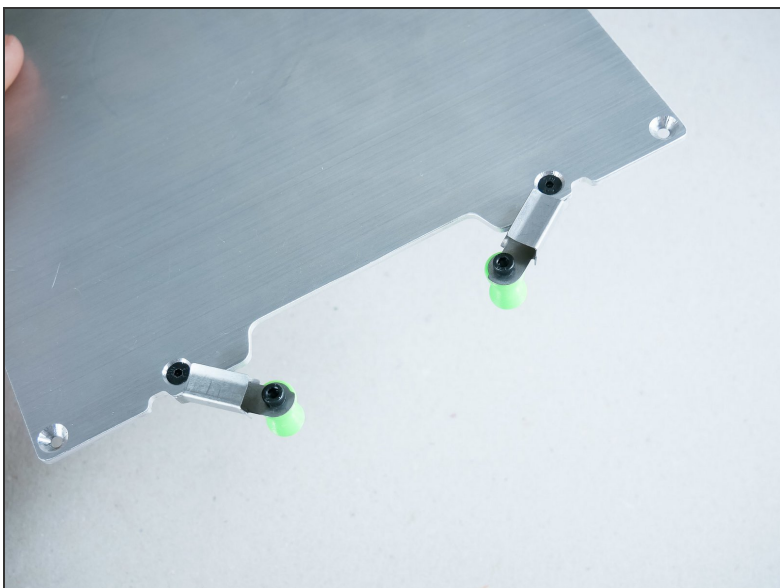
Step 5

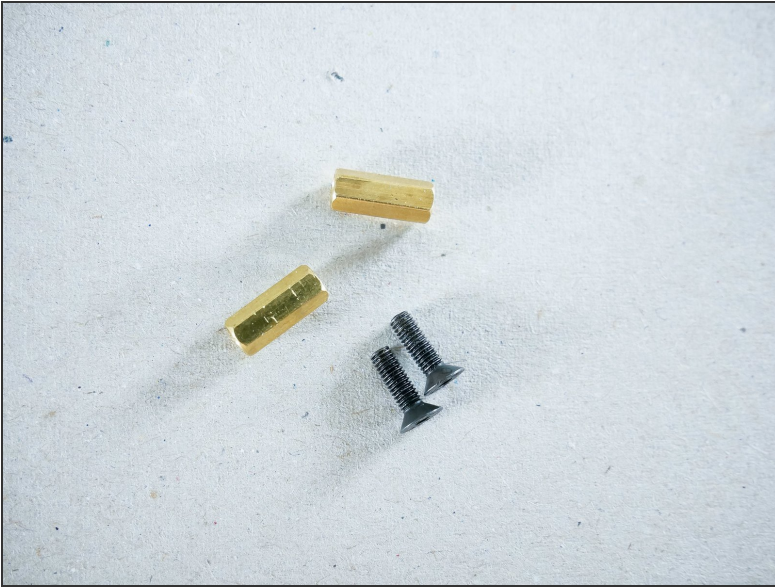


Step 6

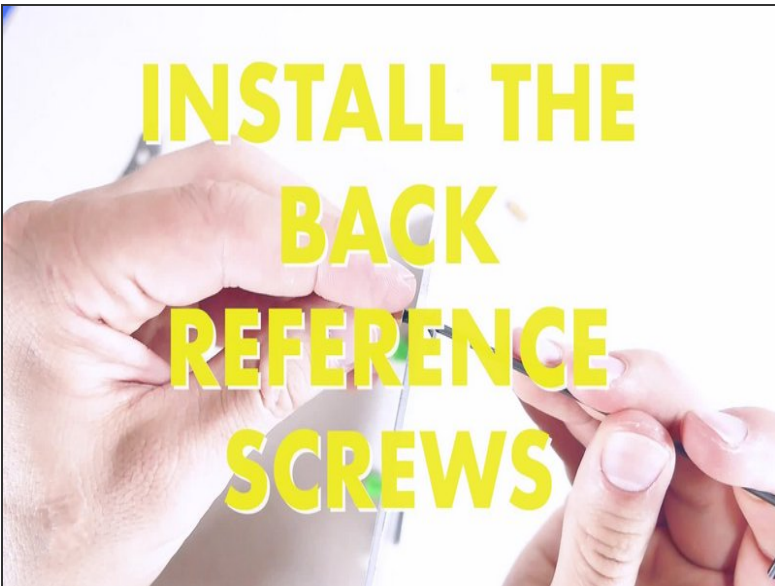


Step 7 — Looking good!



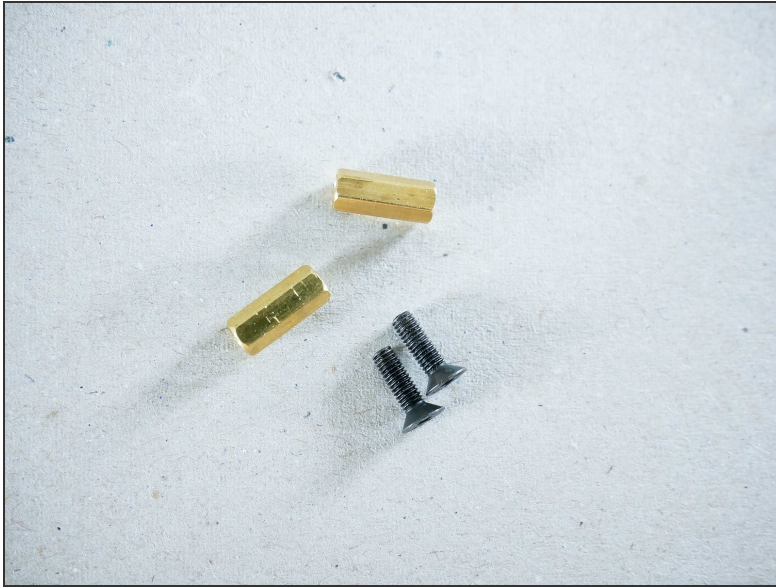
Step 8 — ↪ Install Back Reference Screws

- M3x8 flat head screws (2).

Step 9 — ► Video: Install the Back Reference Screws (3min, narration)

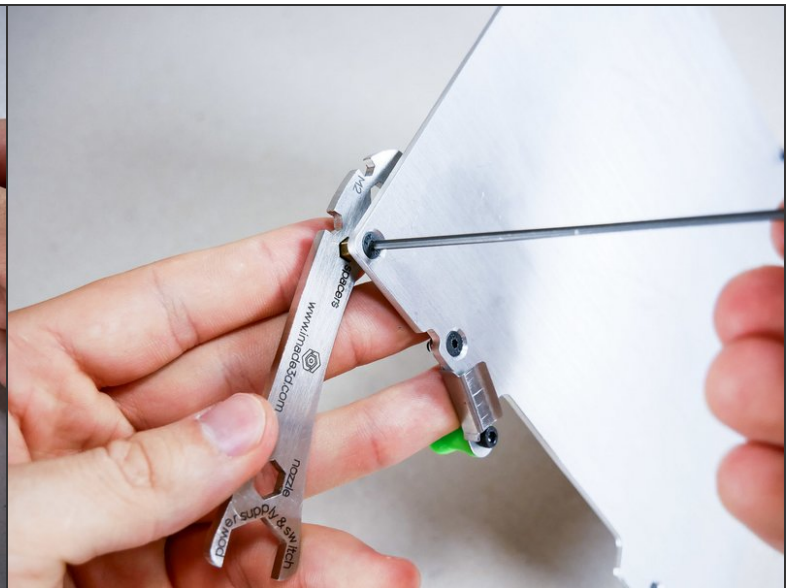
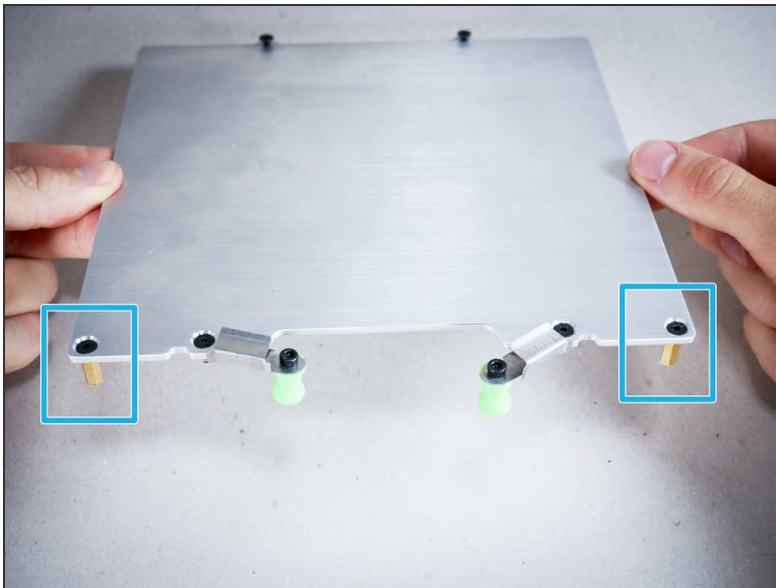
- ► Video: Install the Back Reference Screws (3min, narration)

Step 10 — ↪ Install the Front Standoffs

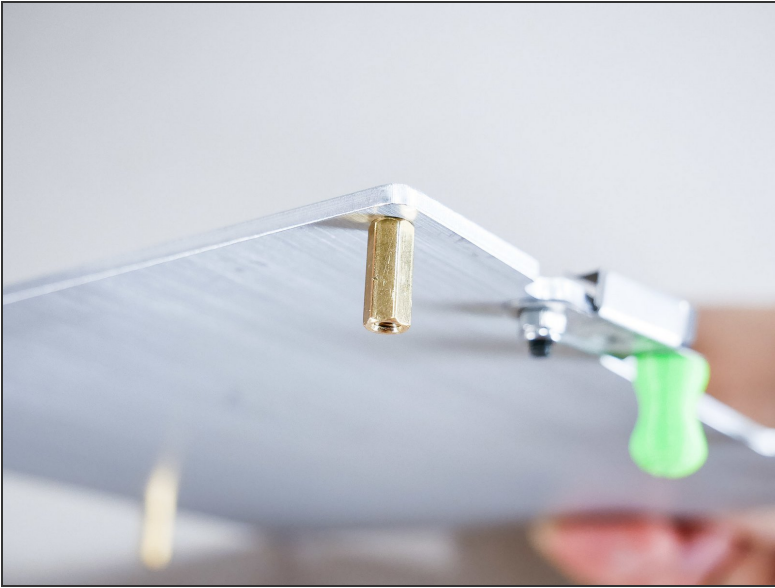


- M3x10 flat head screws

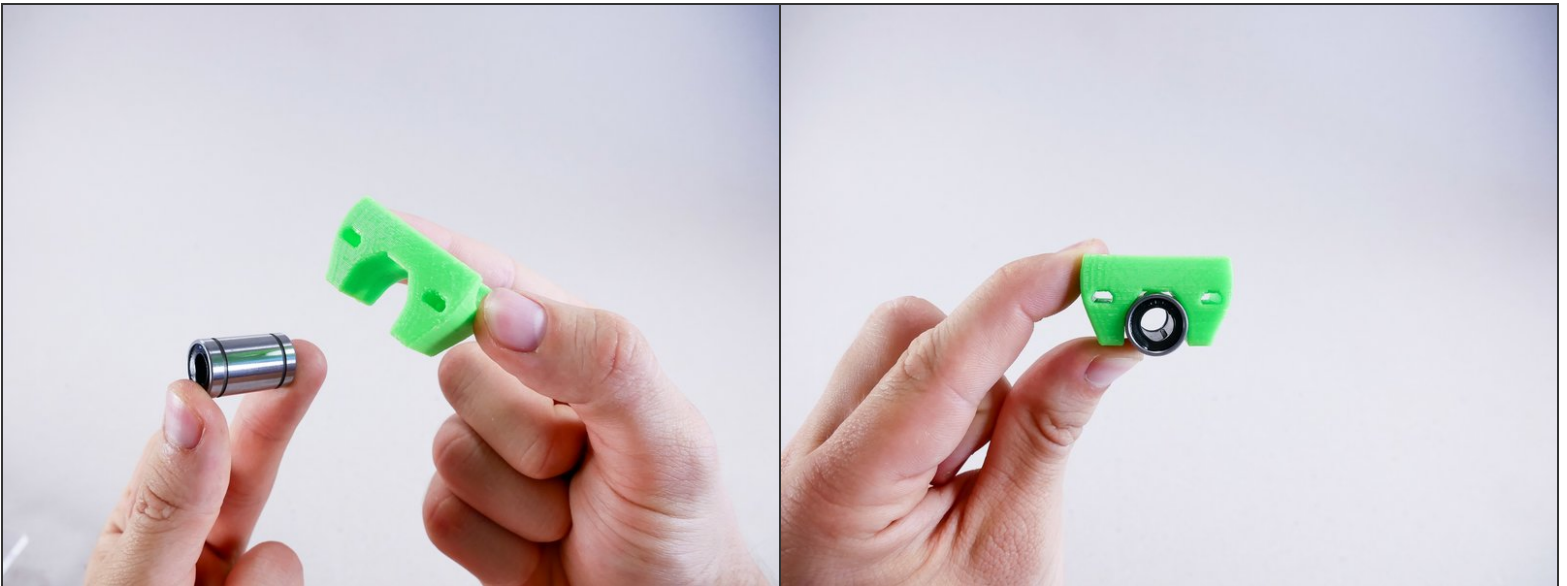
Step 11



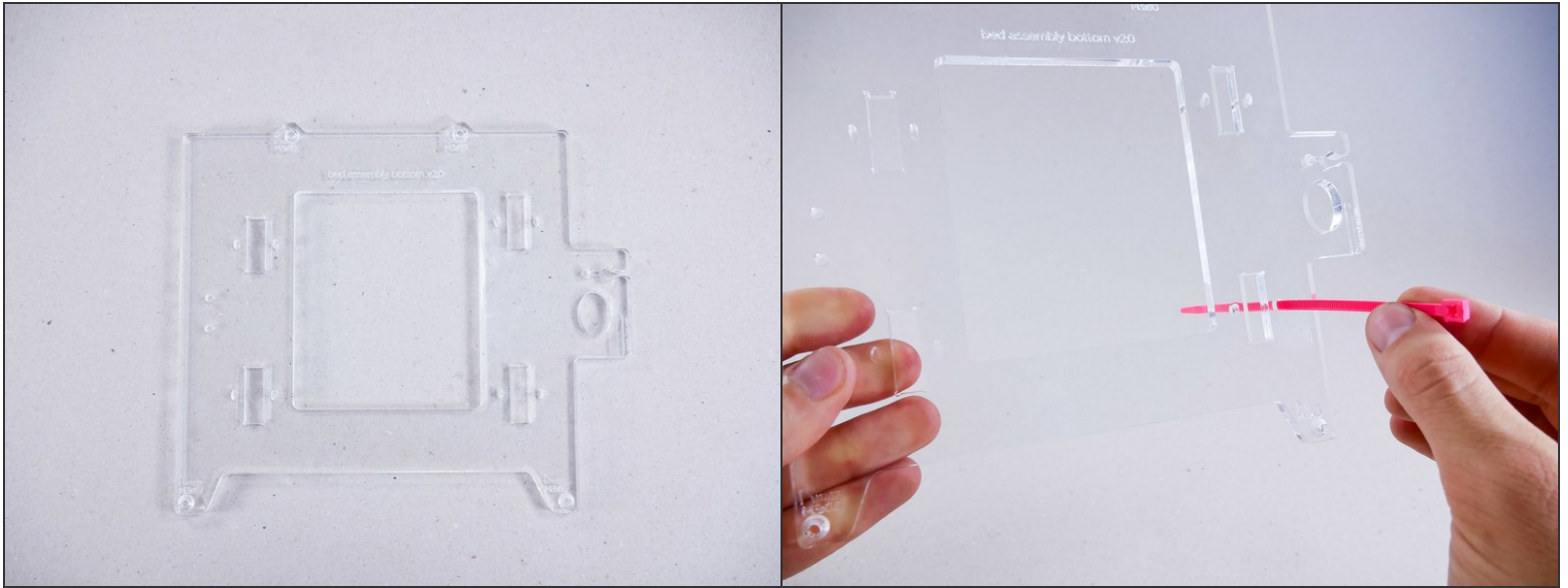
Step 12 — Looking good!



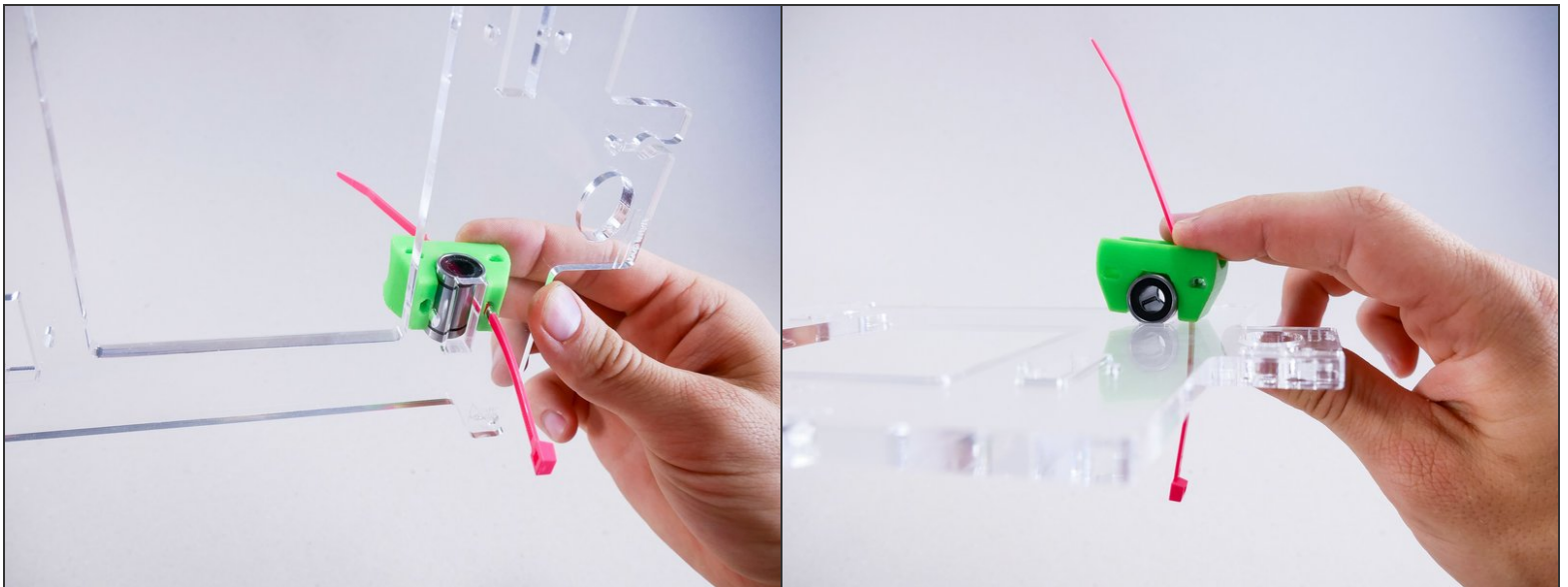
Step 13 — ↳ Install the Y Linear Bearings (heated)



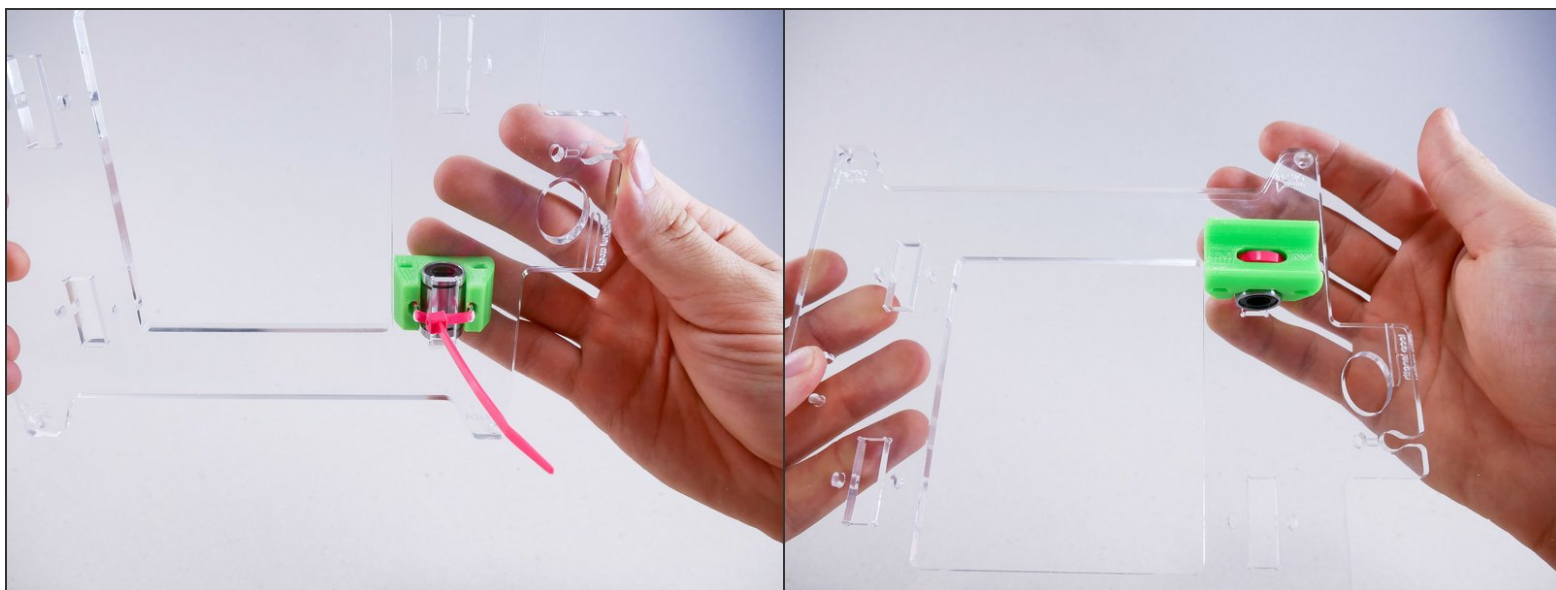
Step 14



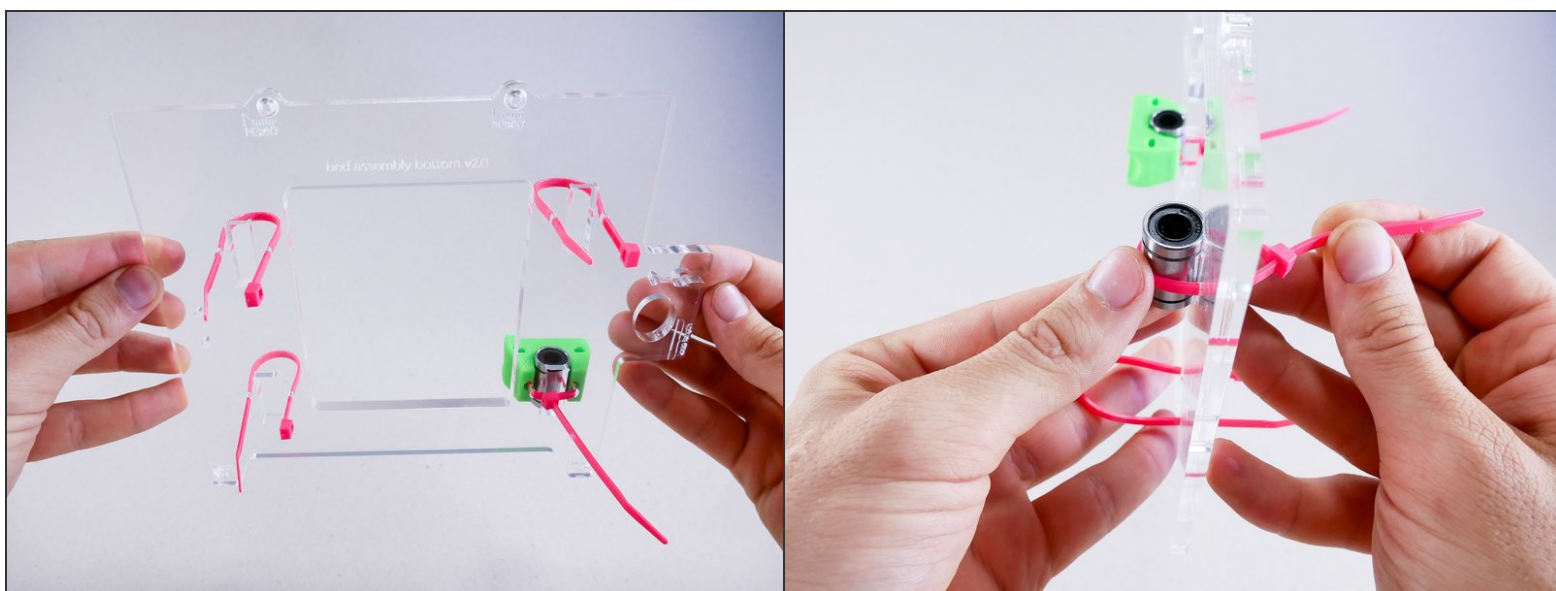
Step 15



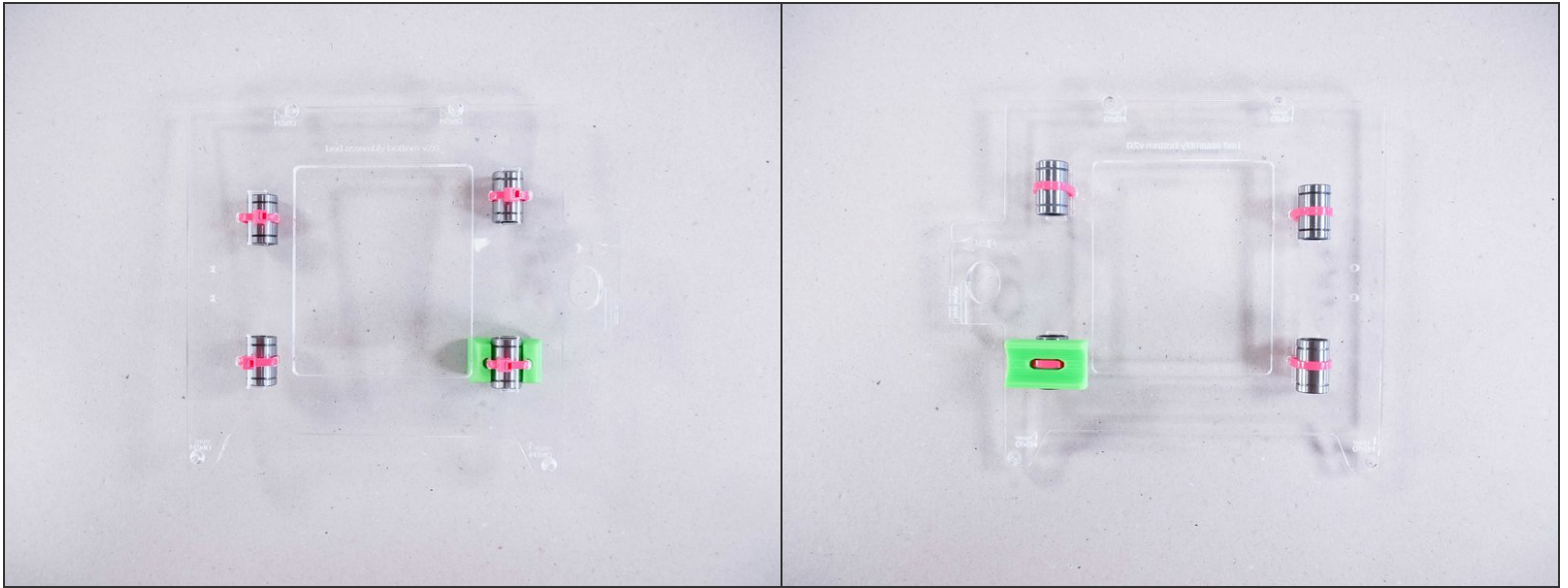
Step 16



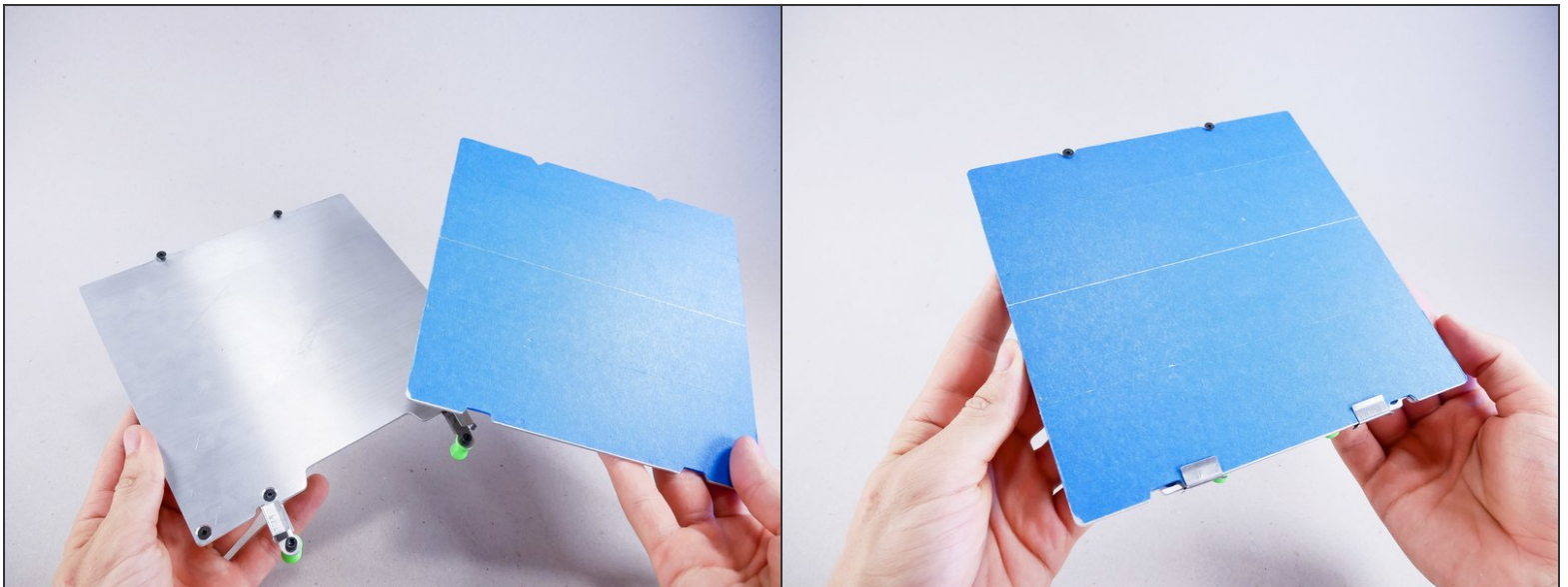
Step 17



Step 18 — Looking good!

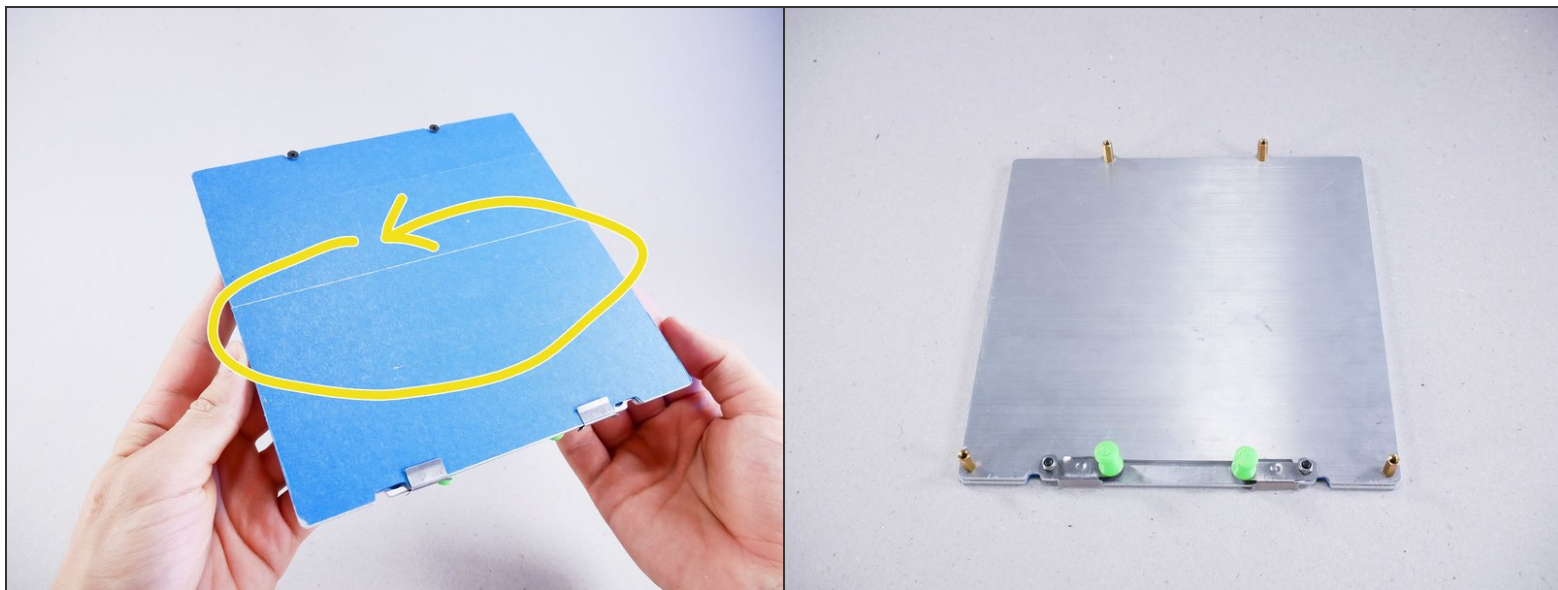


Step 19 — ↳ Install the Heater Pad



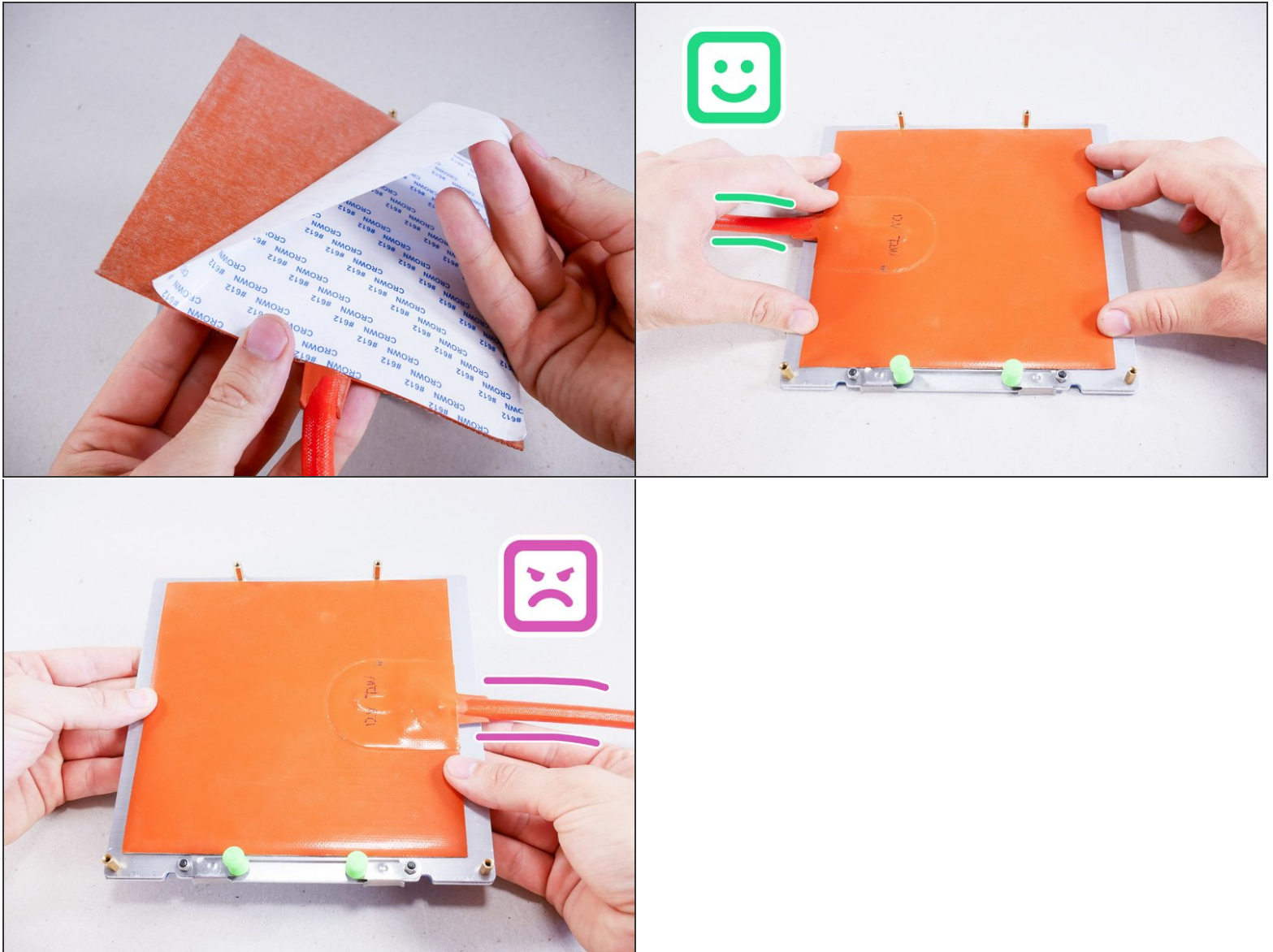
- Install the build plate.

Step 20



- Insert wisdom here.

Step 21



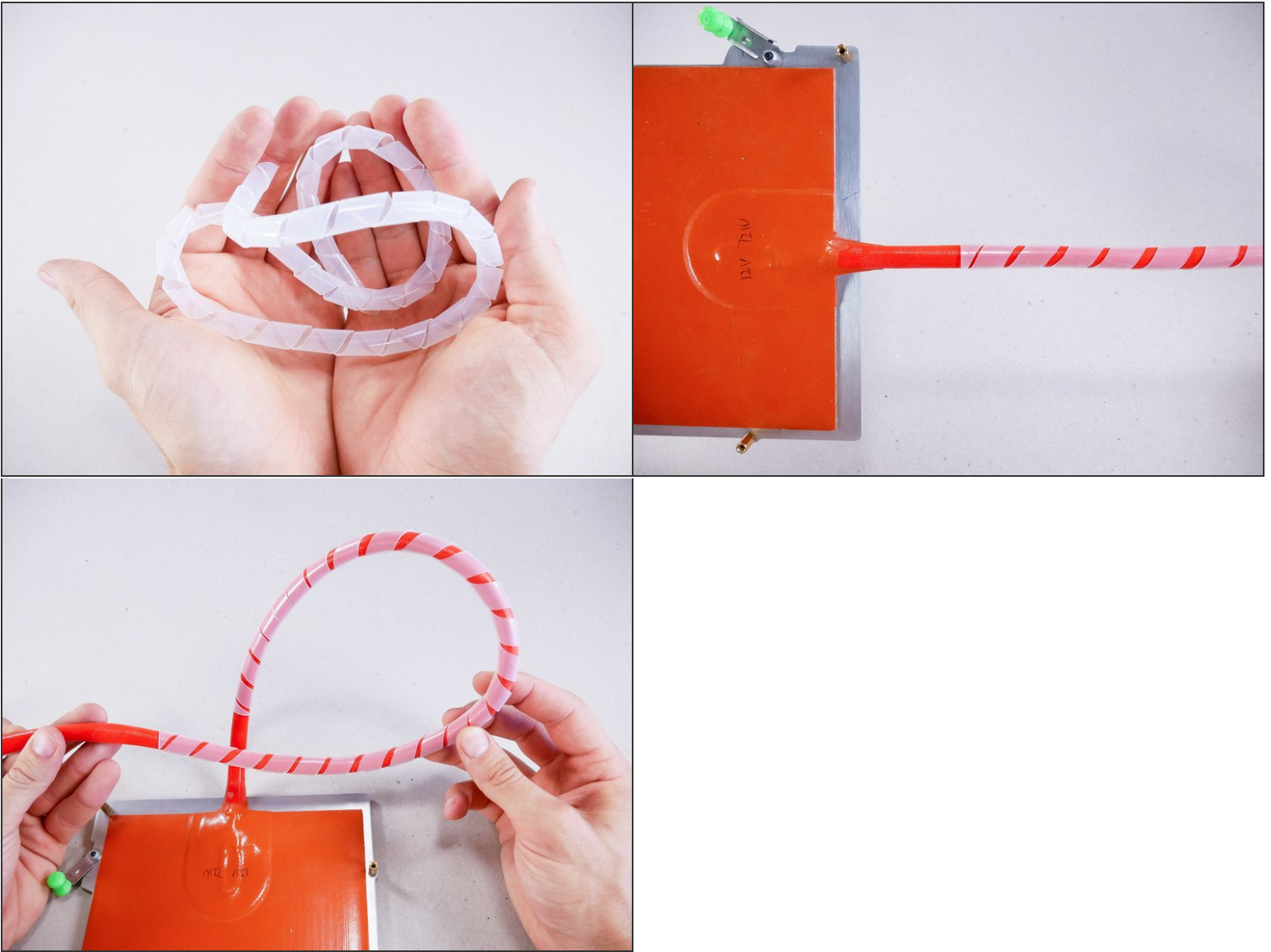
- The heater pad may be slightly larger than the bed. The outside edge is just silicone - you can trim it with a knife after installation.

Step 22



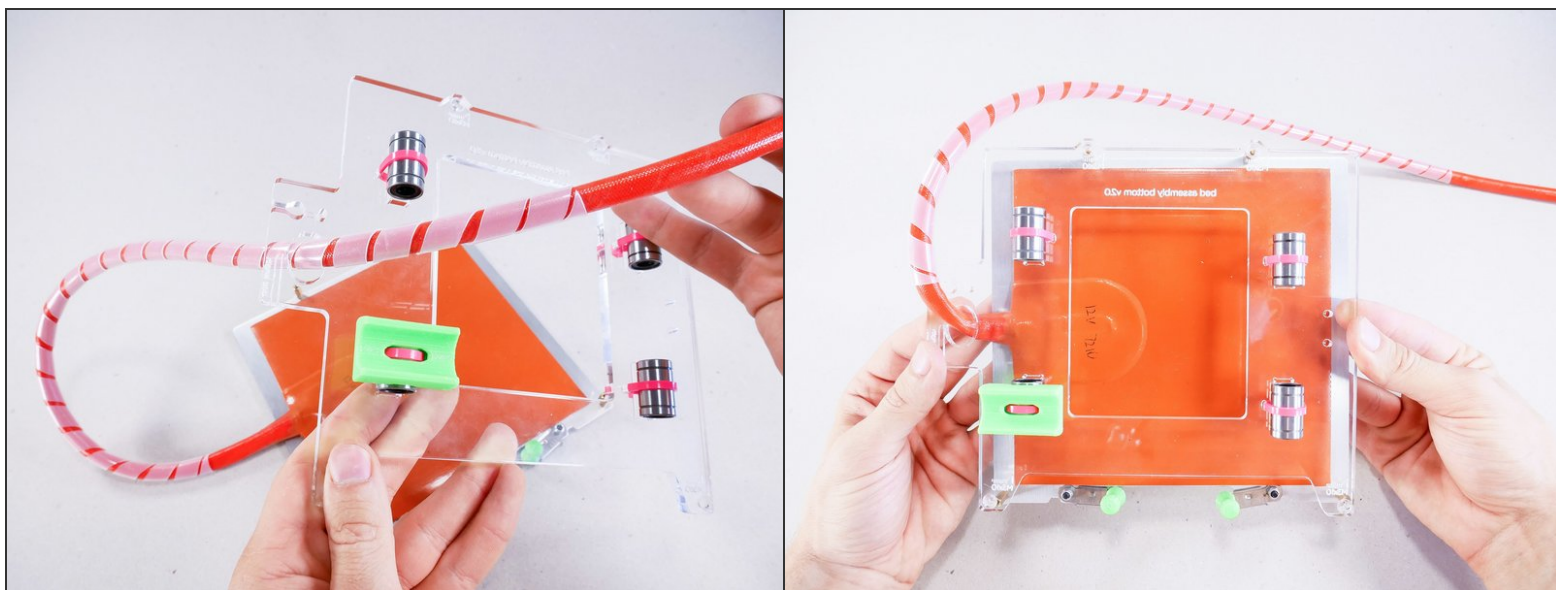
- Firmly press the silicone heater pad onto the aluminum base.

Step 23

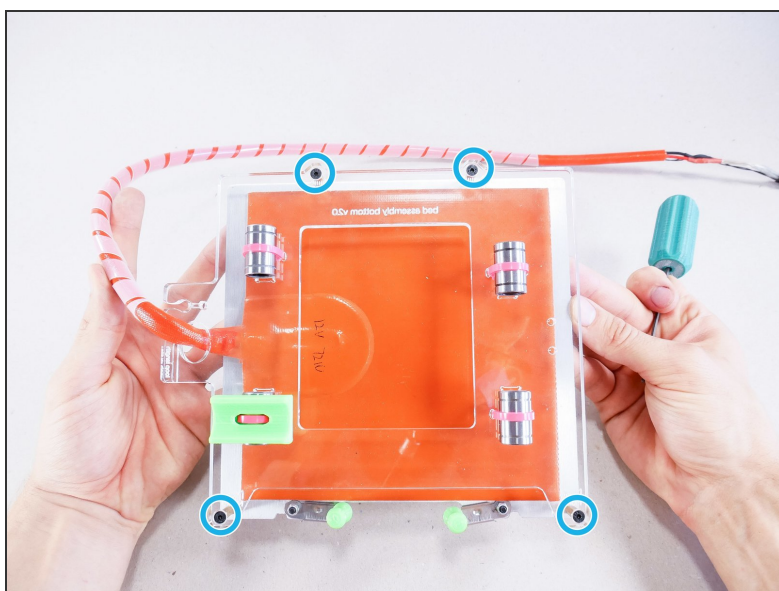


- Wrap the wiring in spiral wrap for protection, and you're done!

Step 24 — ↳ Sandwich (heated)

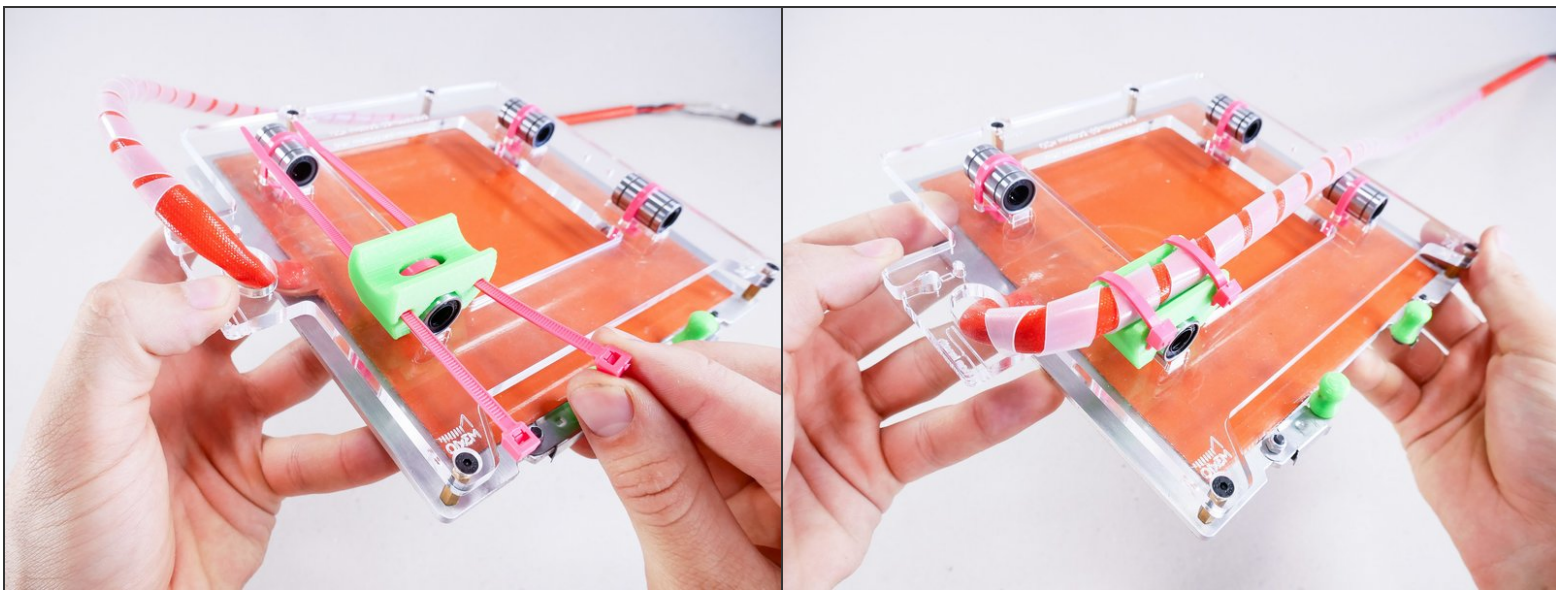


Step 25

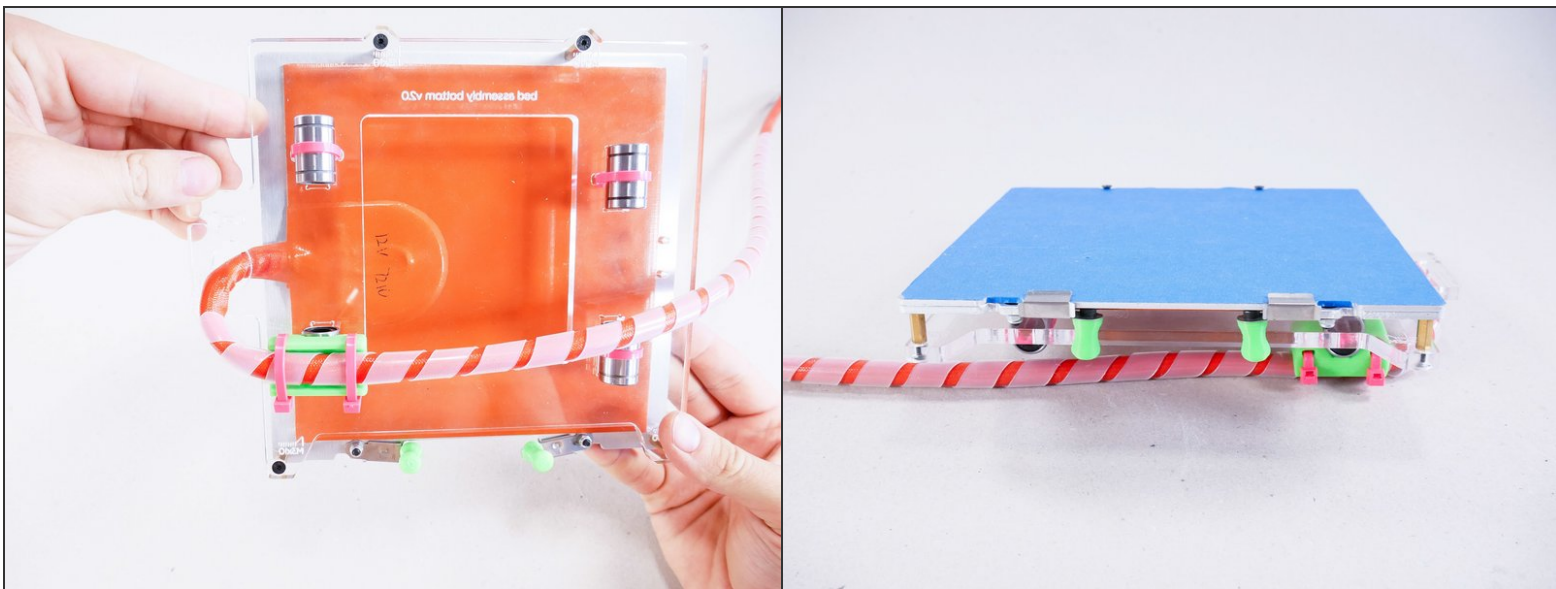


- M3x10 flat head

Step 26

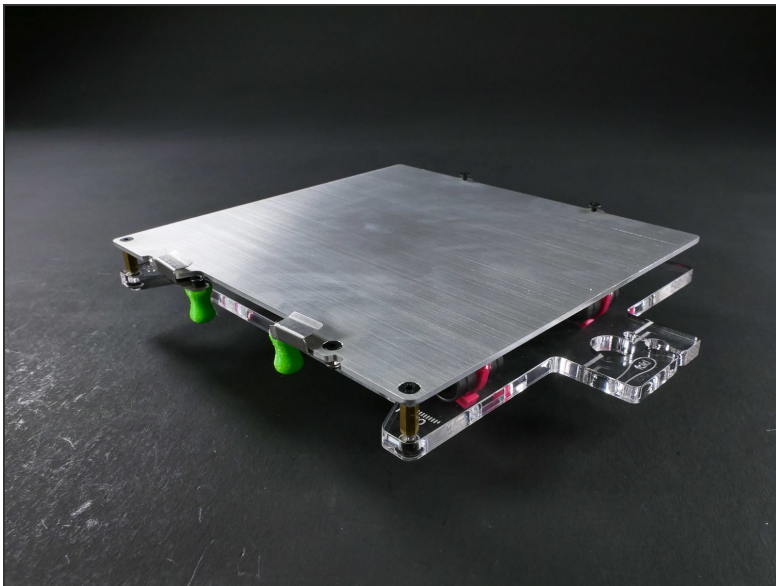


Step 27 — Looking good!

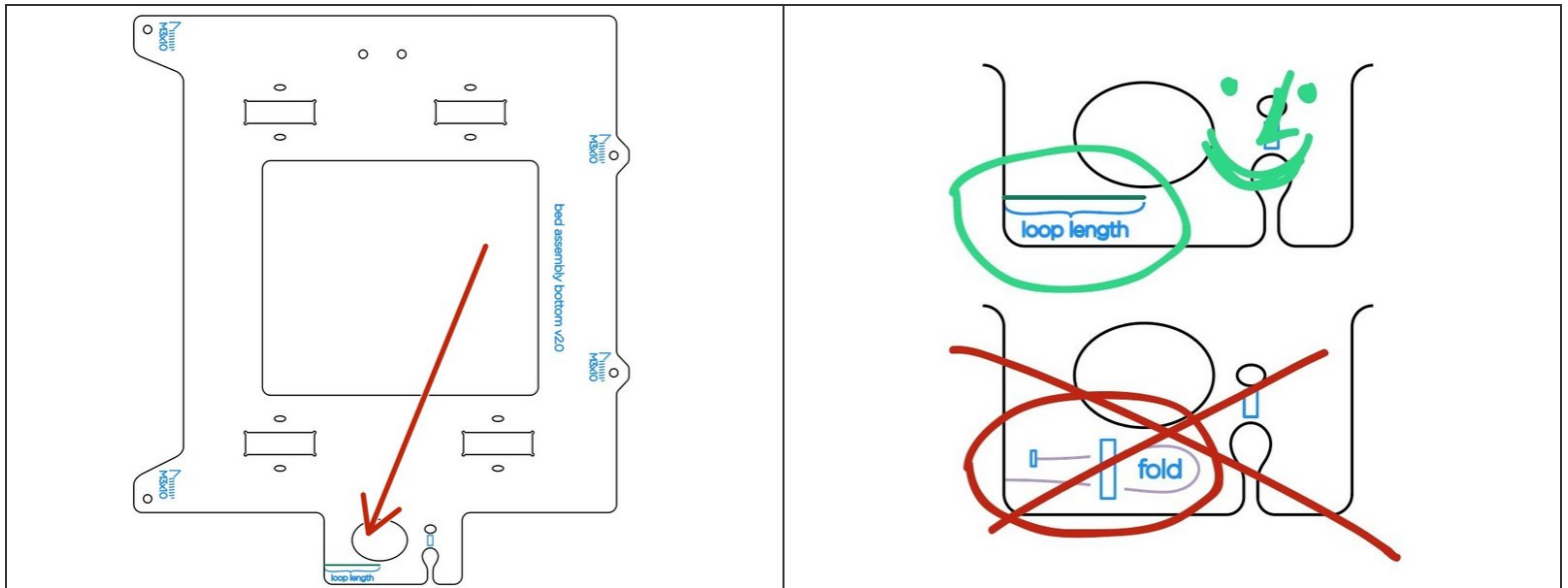


Step 28 — ► Video: Tighten the Front Clips (1 min, narration)

- ► Video: Tighten the Front Clips (1 min, narration)

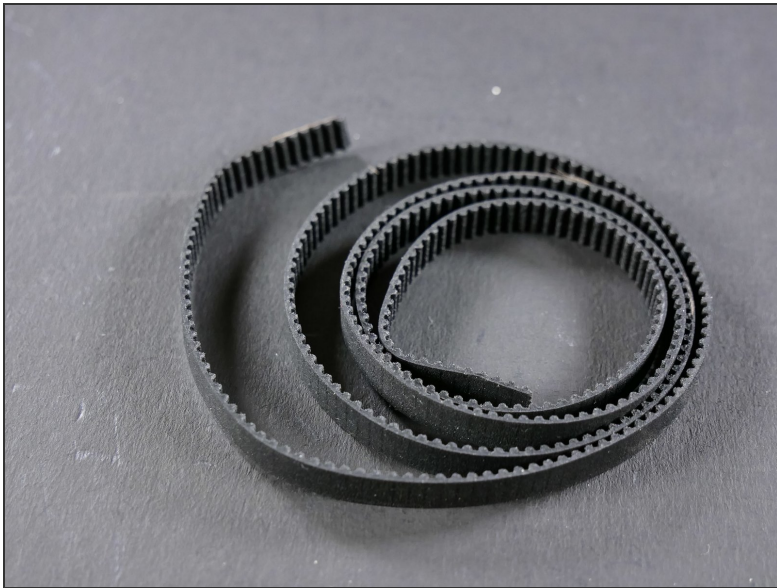
Step 29 — ↳ Attach the Y Belt (cold)

Step 30

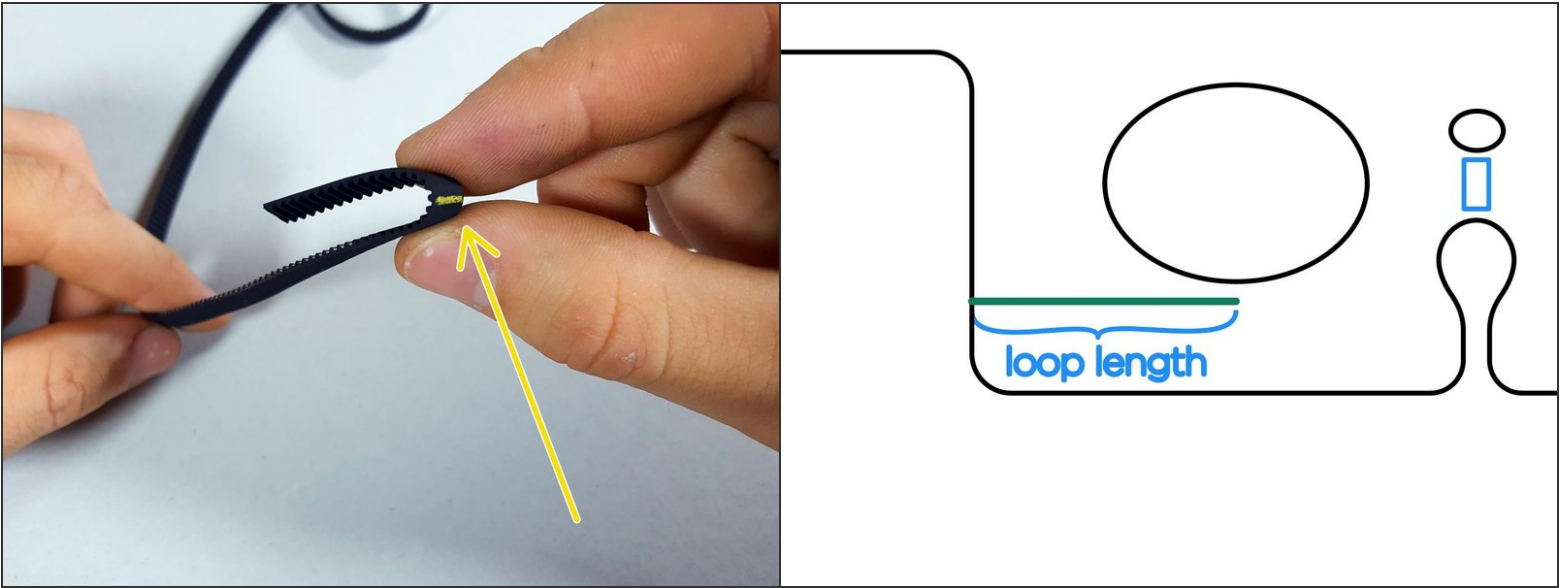


⚠ [update] The etchings on the bottom of the Y assembly have changed. Functionally, it's the same.

Step 31

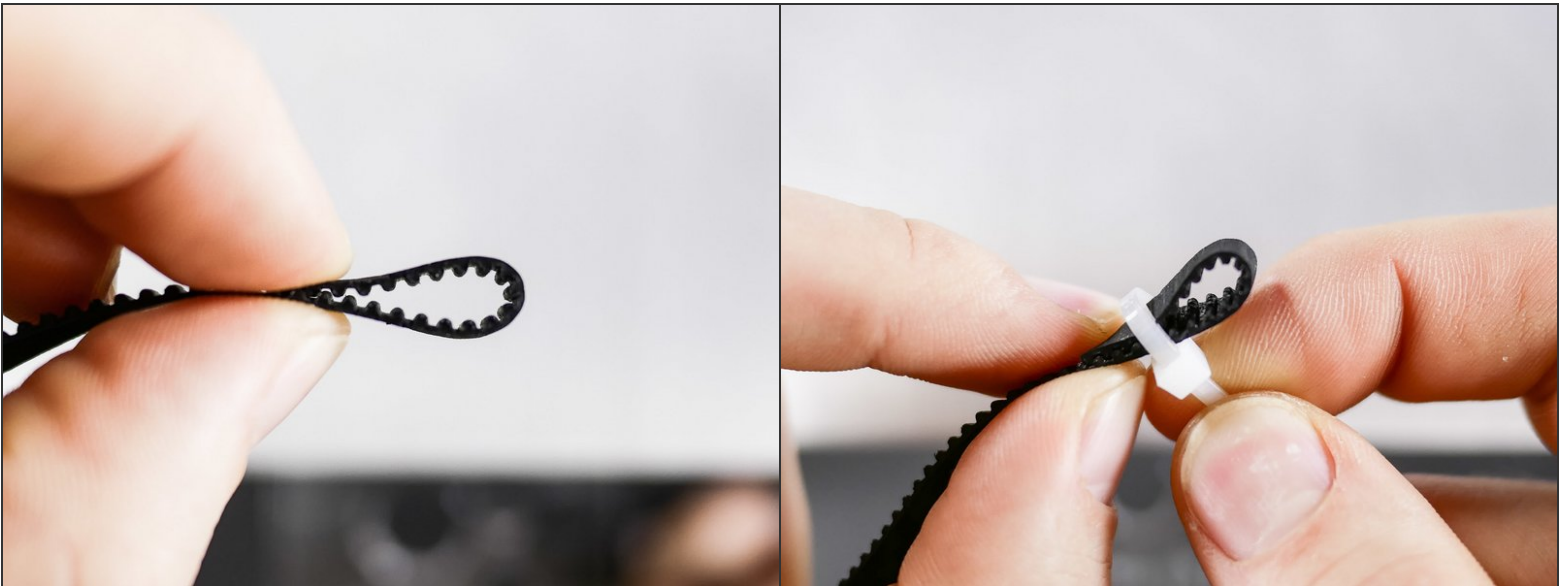


Step 32

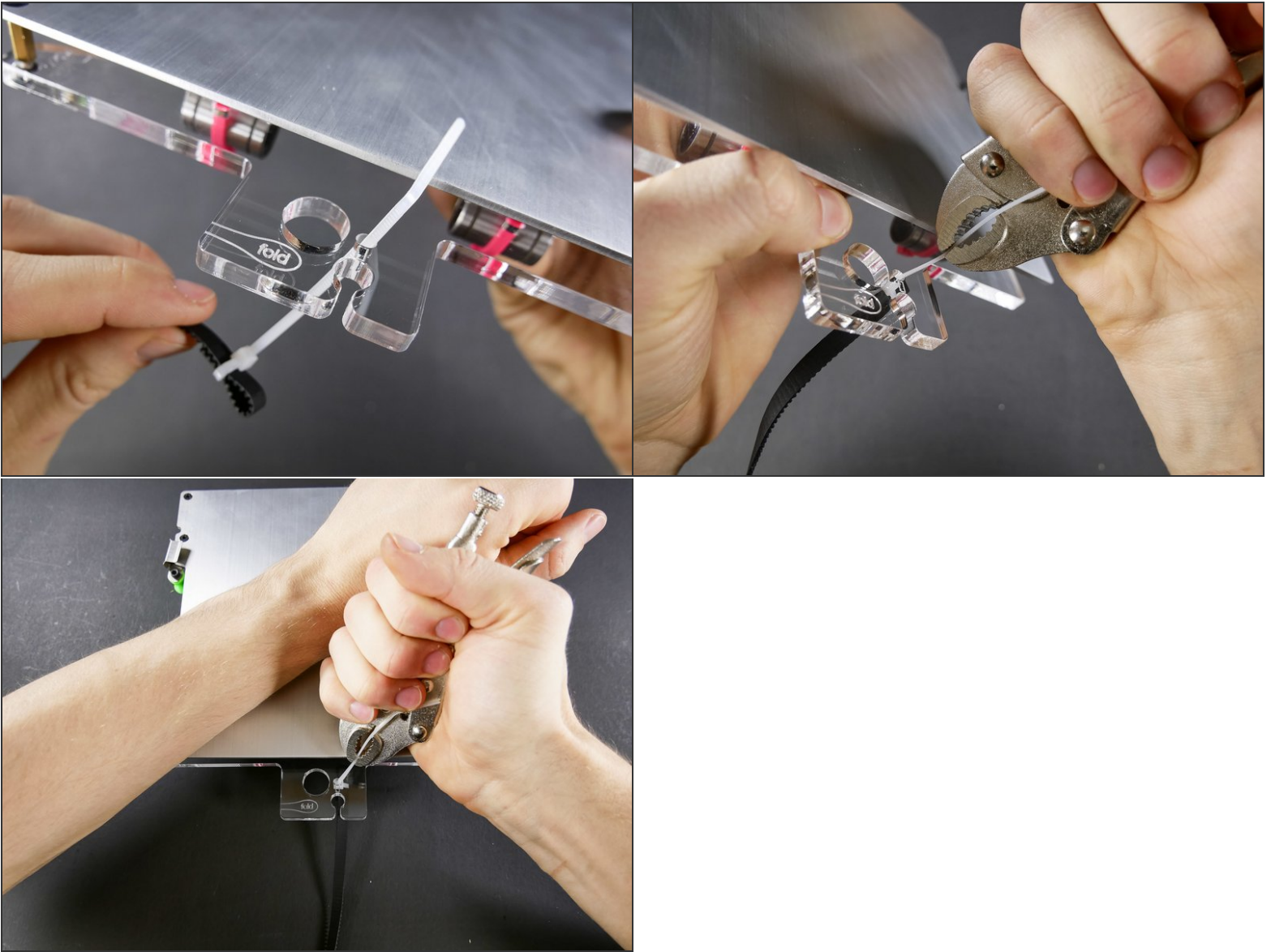


- The marks on the belt mark the the tops of the loops.
- (The mark is 20mm from the end of the belt.)

Step 33

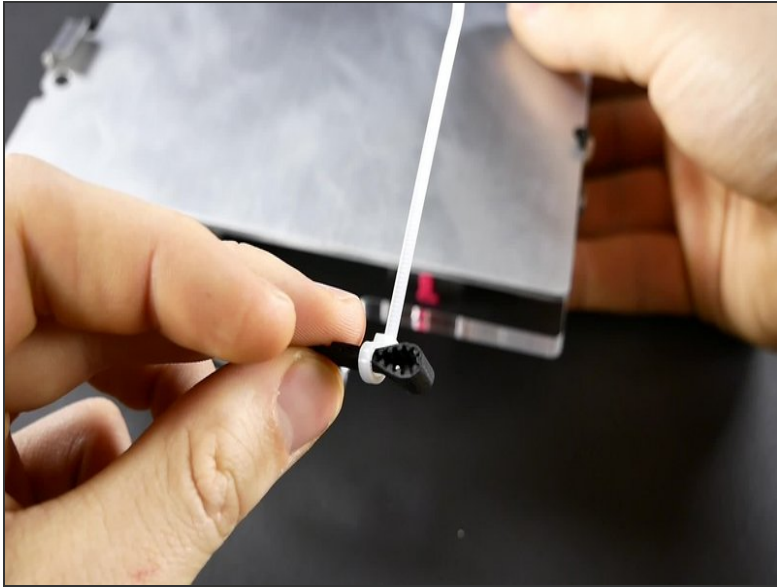


Step 34



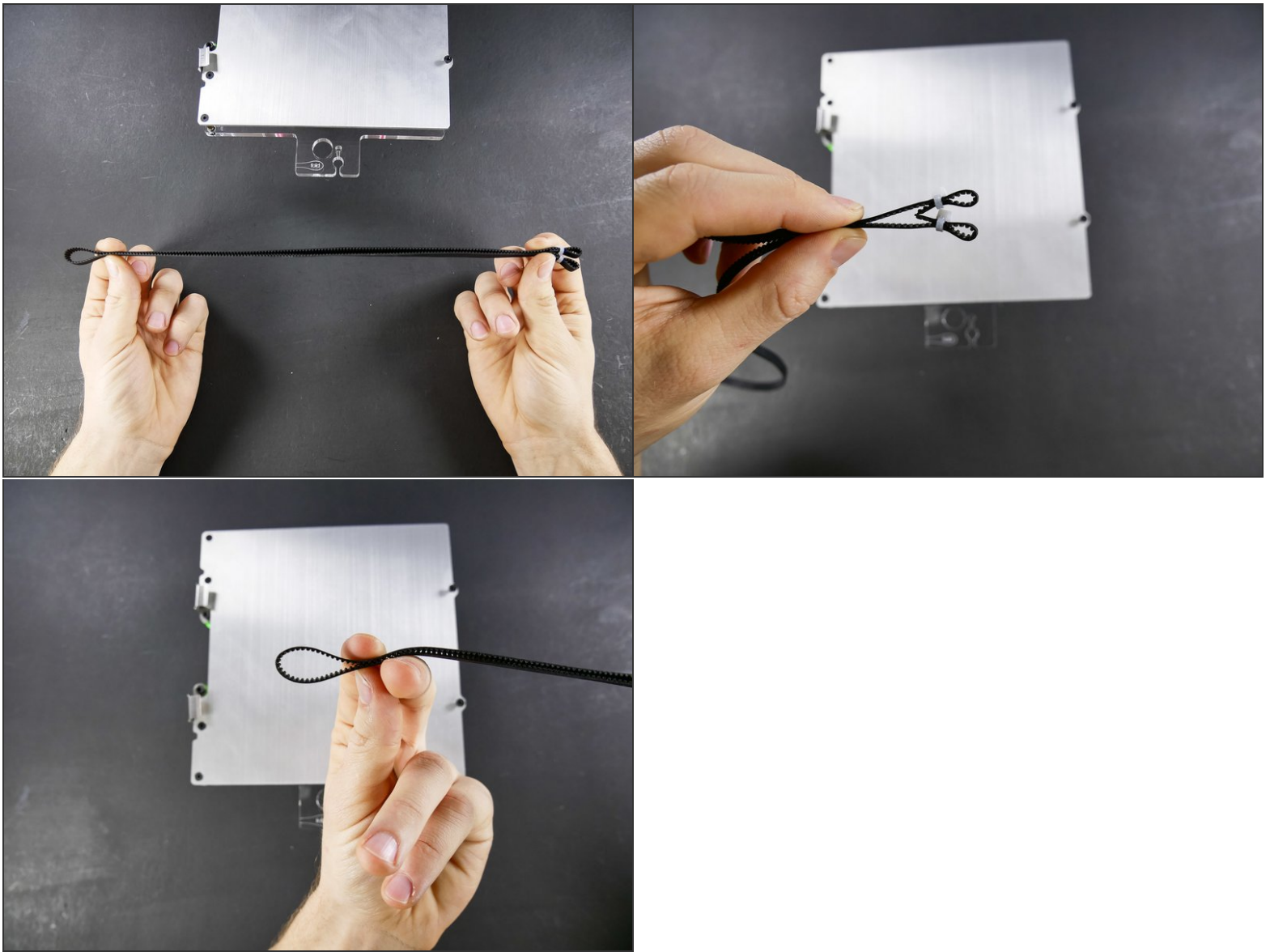
👉 This is just a very convenient **zip tightening method**.

- ▶ There's VIDEO in the next step.

Step 35 — ► Video: Tighten the Y Belt Zip Tie

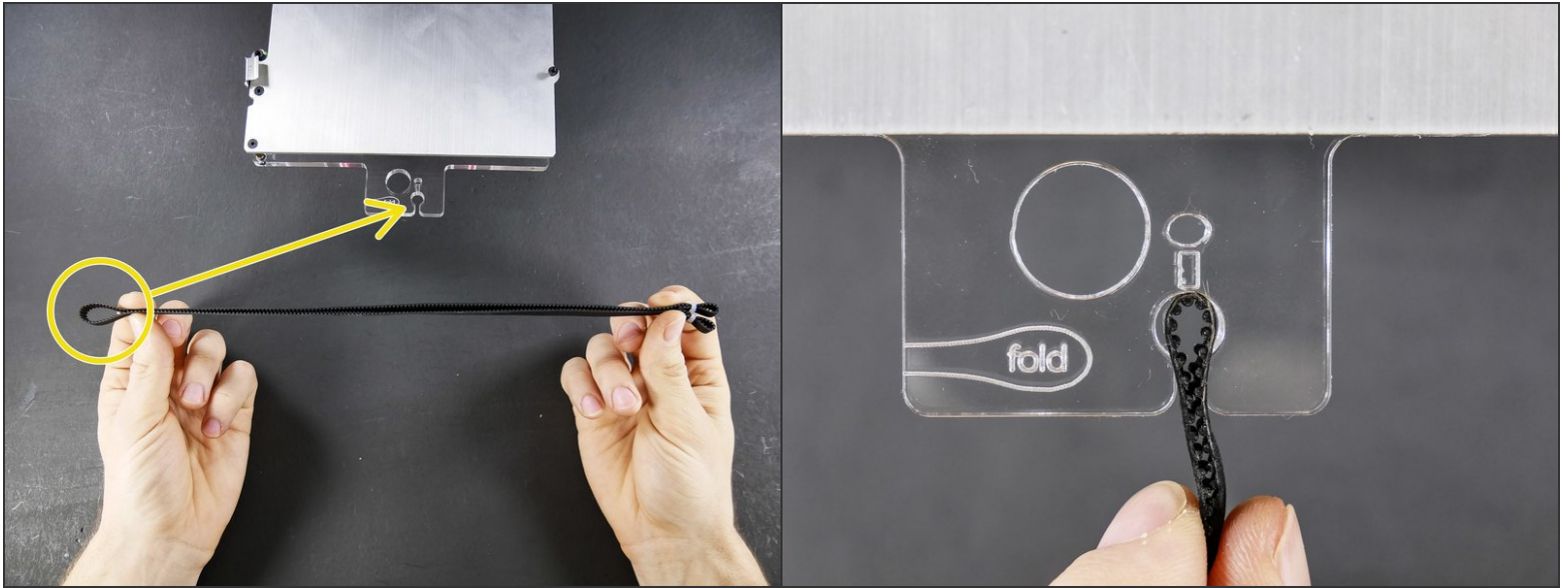
- ► Video: Tighten the Y Belt Zip Tie

Step 36

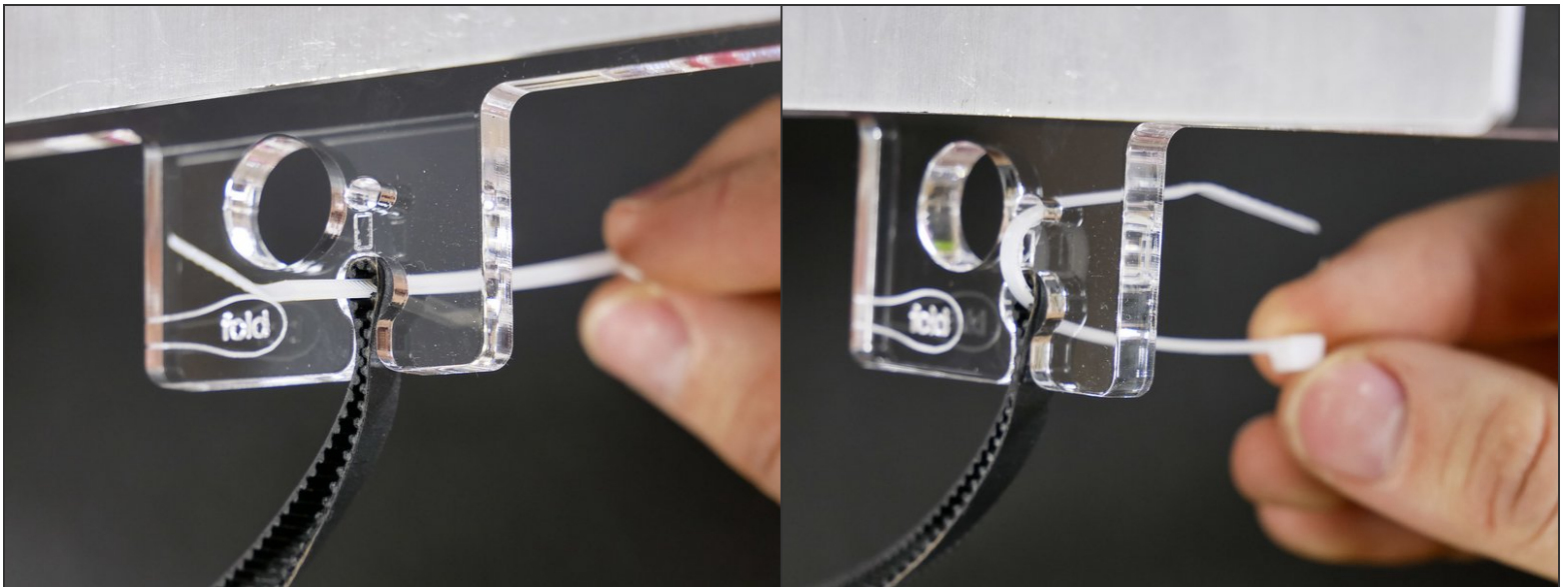


- Fold the belt in the middle.

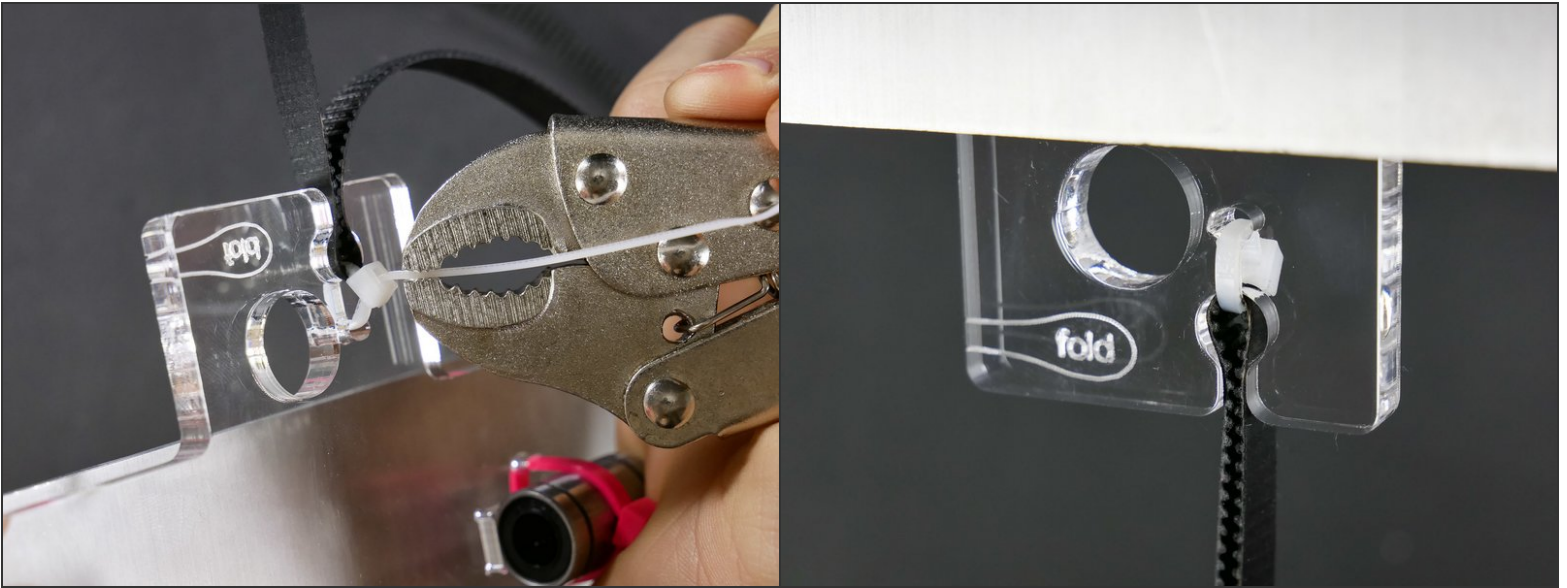
Step 37



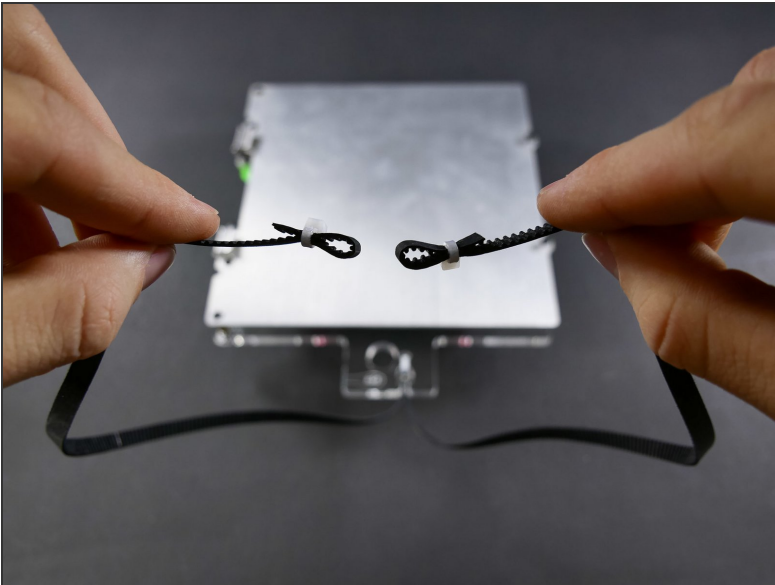
Step 38



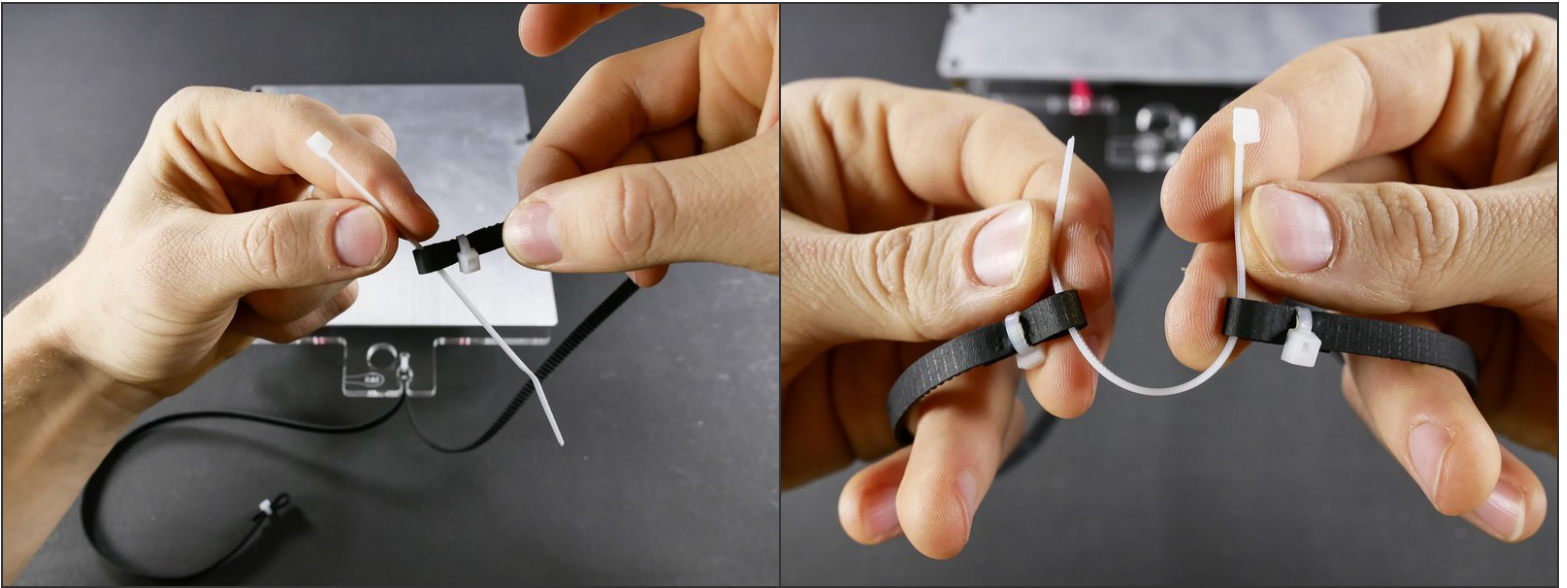
Step 39



Step 40



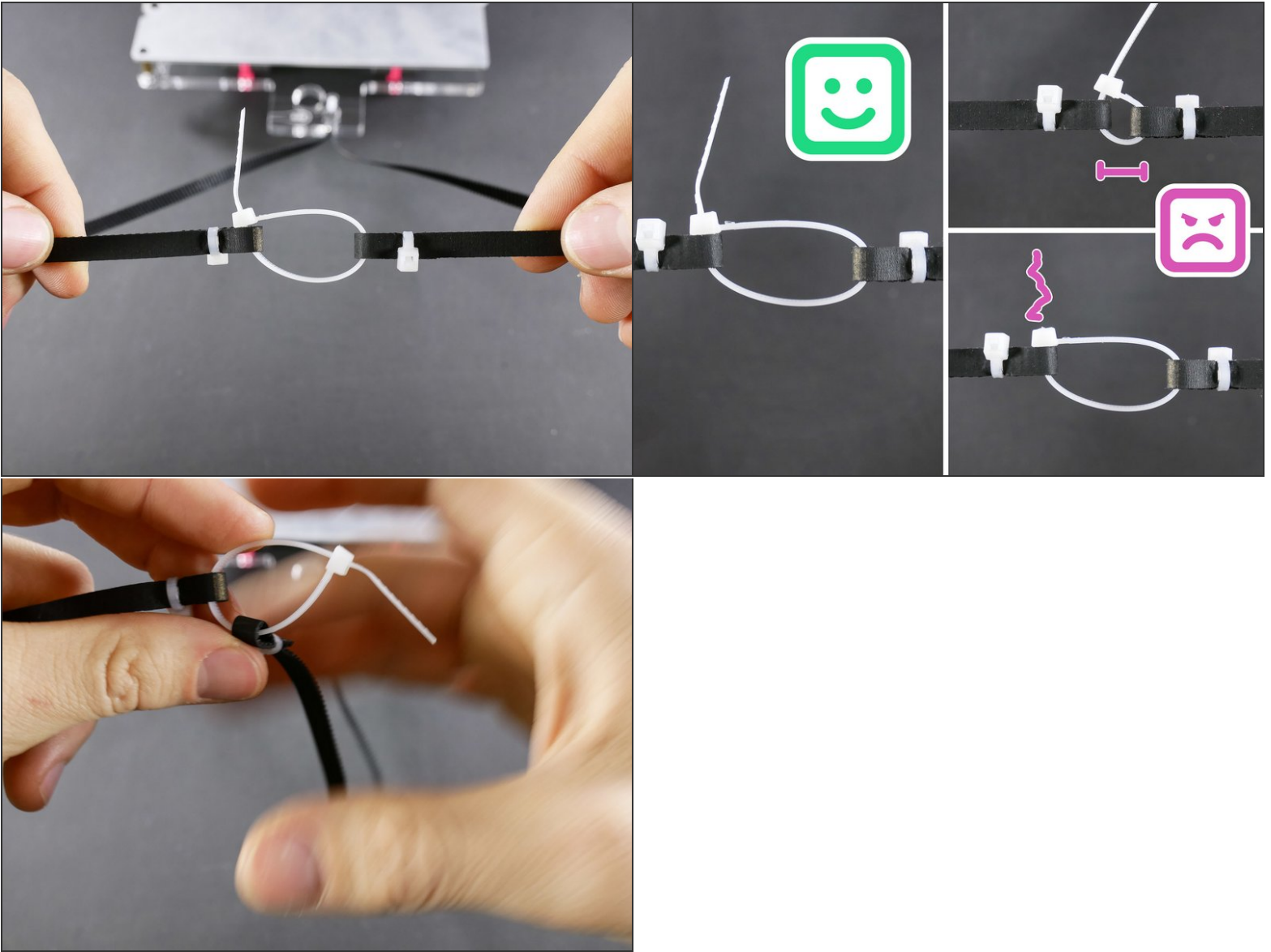
Step 41



⚠ Erratum: Use PINK 5" ZIP TIE

- The rest of the guide, unfortunately, still features white zip tie. Use a PINK one instead.

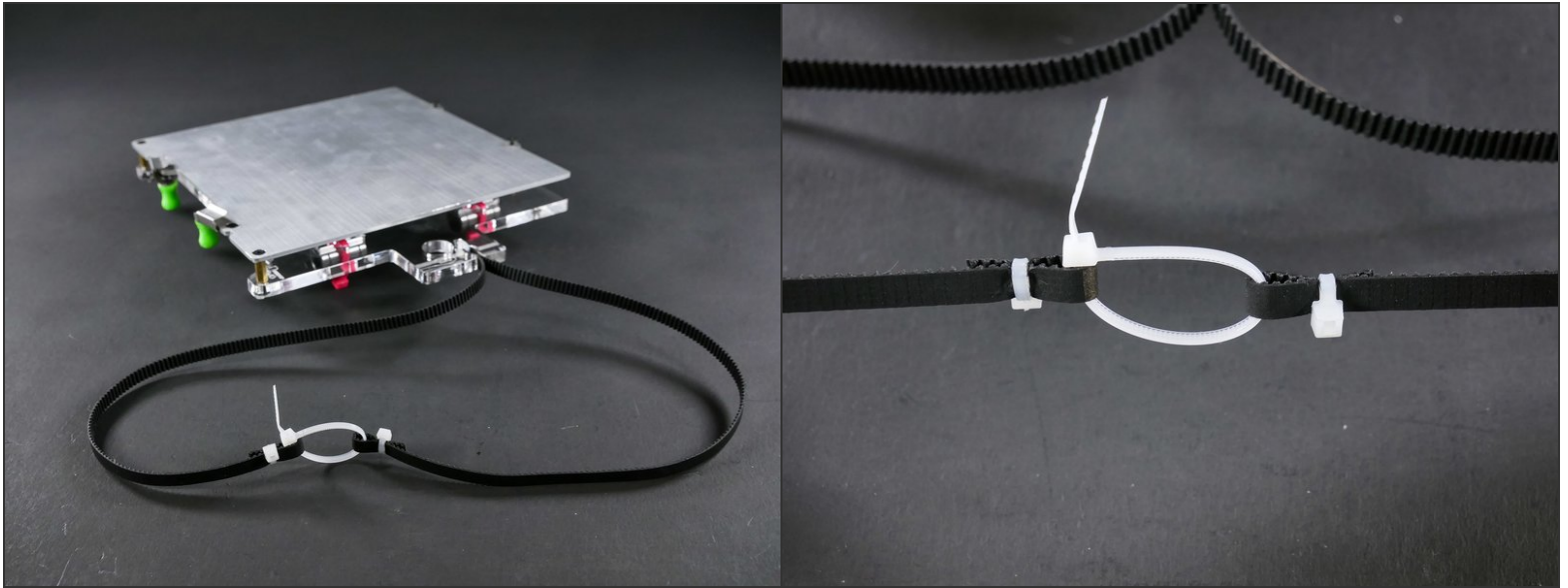
Step 42



⚠ Erratum: Use PINK 5" ZIP TIE

- The rest of the guide, unfortunately, still features white zip tie. Use a PINK one instead.

Step 43 — It's done!



- Happy you should be.

What's Next?

Get back to the [← Makers Kit Build Flow](#) and continue with the next guide.