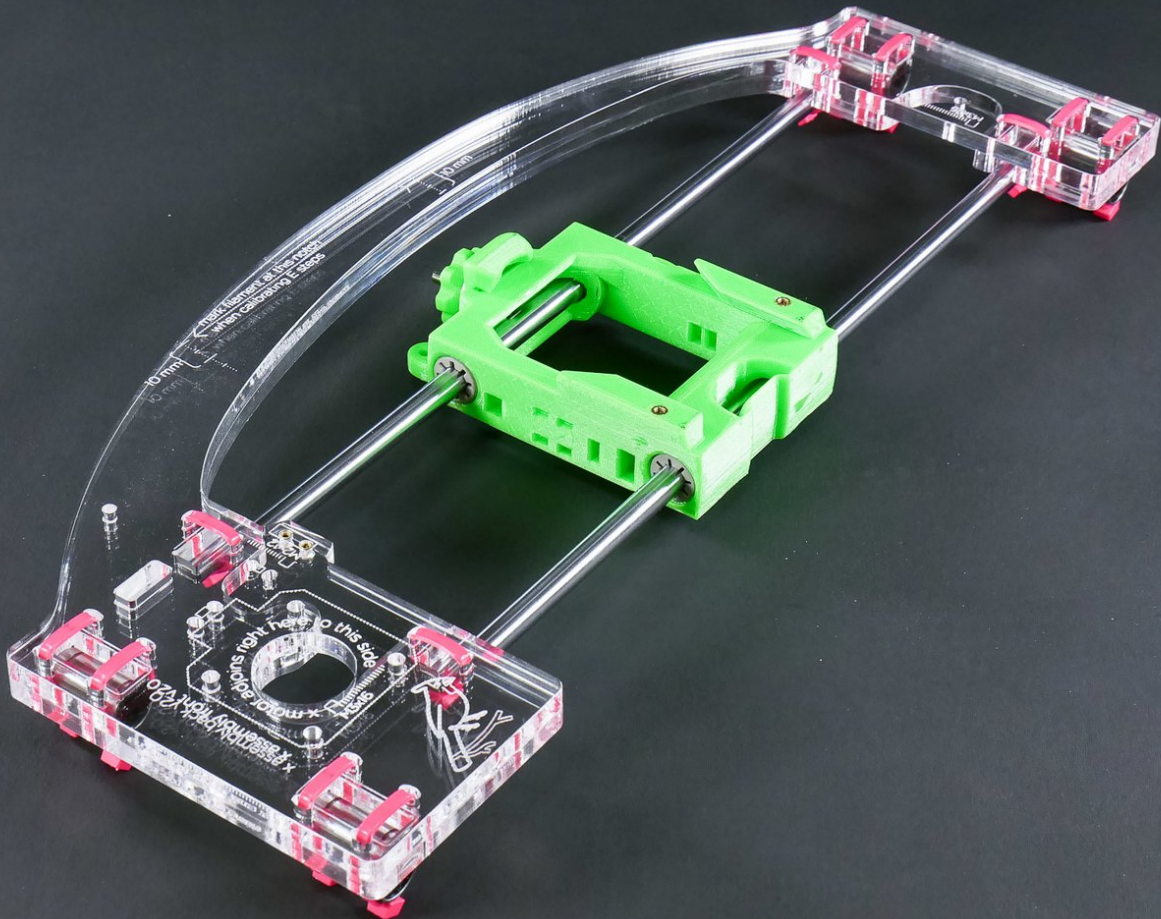




# X Assembly Frame

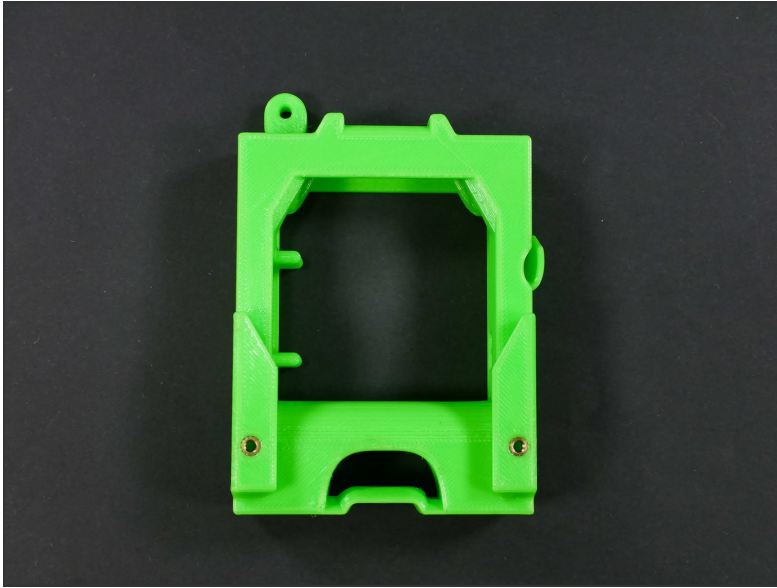


# INTRODUCTION

Not the guide you are looking for?

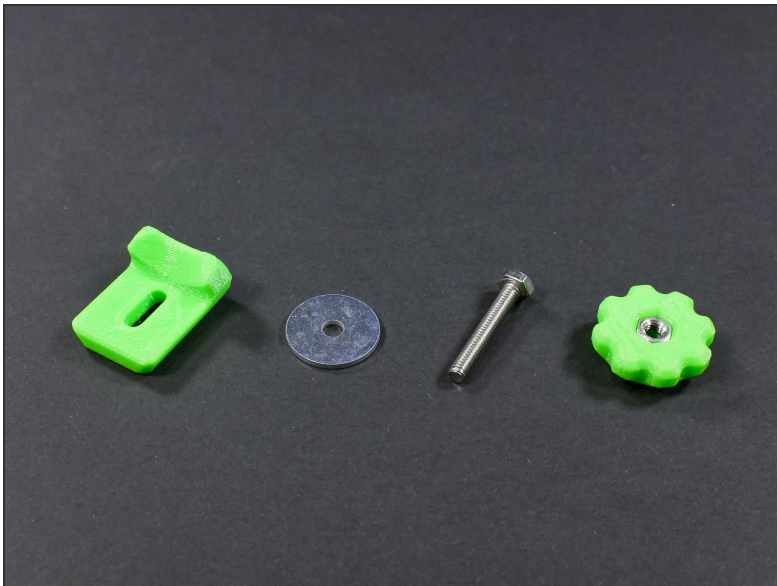
Go back to the [← Makers Kit Build Flow.](#)

## Step 1 — ↳ Prep the Quick Release Clamp



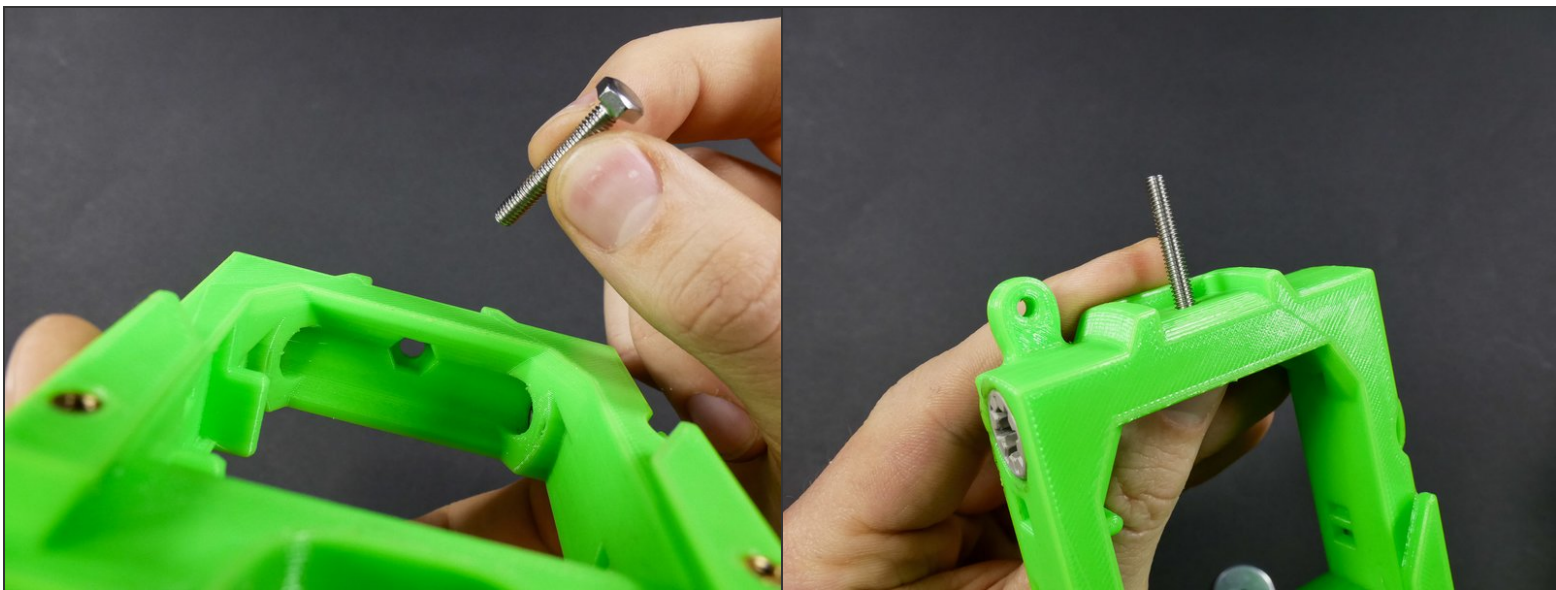
- Insert wisdom here.

## Step 2



- Insert wisdom here.

### Step 3



- Insert wisdom here.

### Step 4



- Insert wisdom here.

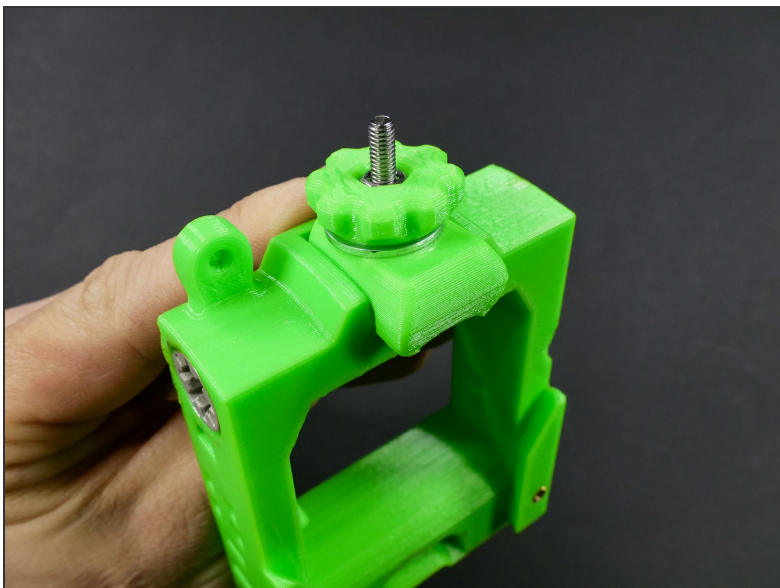


## Step 5



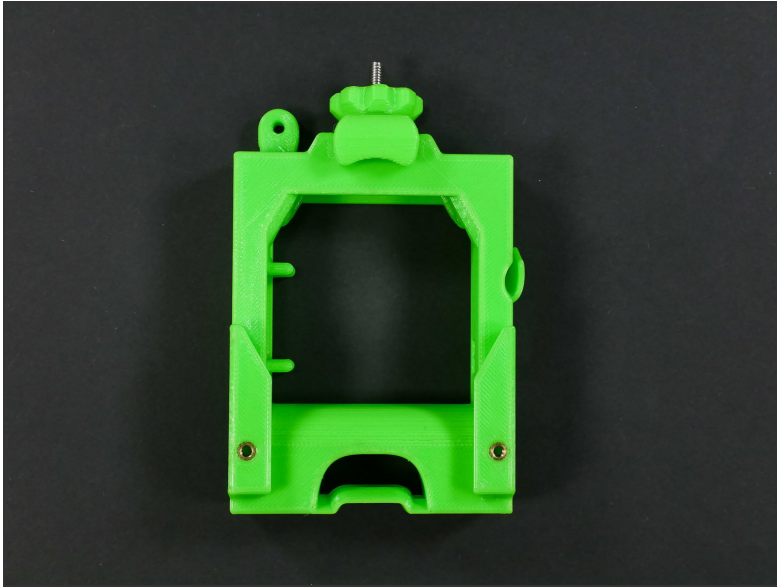
- Insert wisdom here.

## Step 6



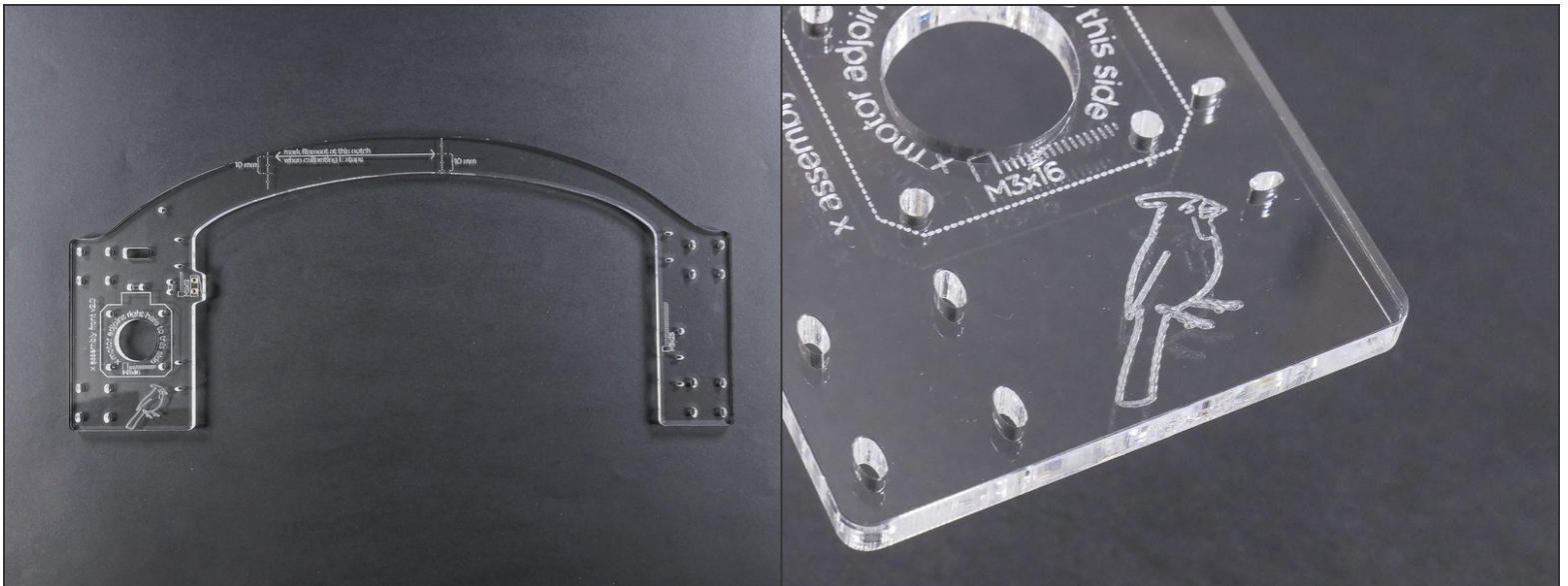
- Insert wisdom here.

## Step 7



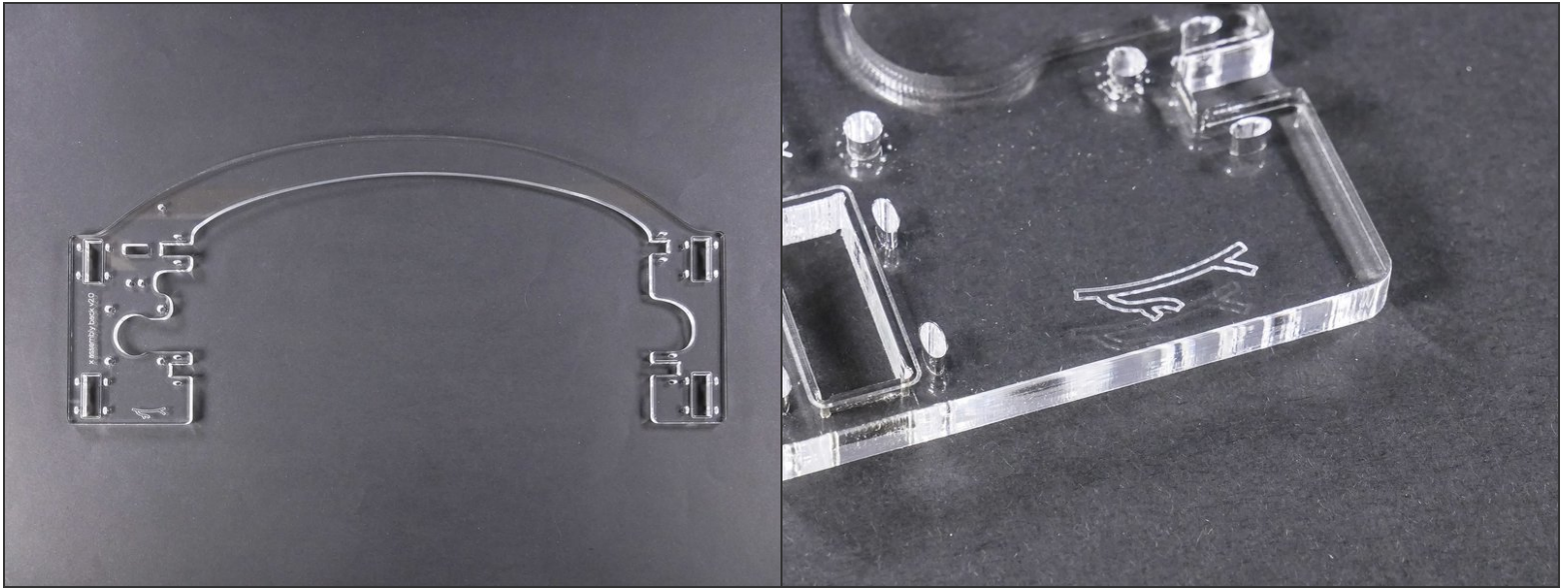
- Insert wisdom here.

## Step 8 — ↳ Install the X Linear Bearings



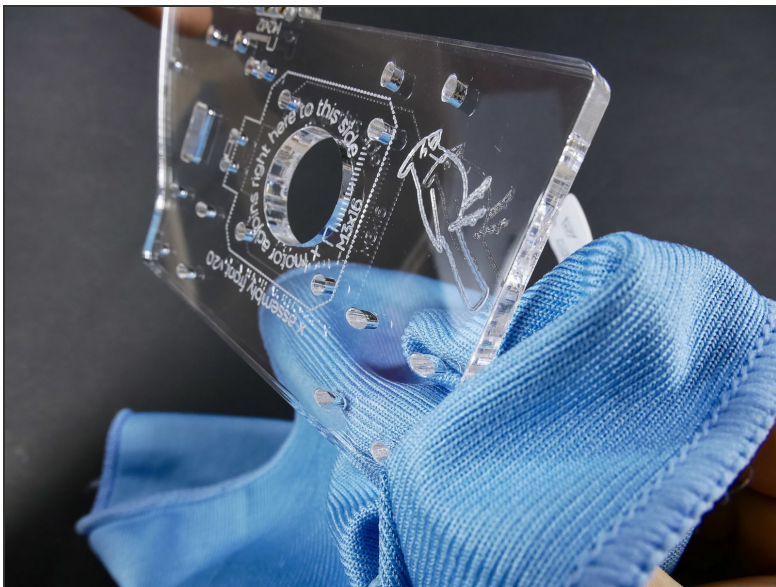
- Insert wisdom here.

## Step 9



- Insert wisdom here.

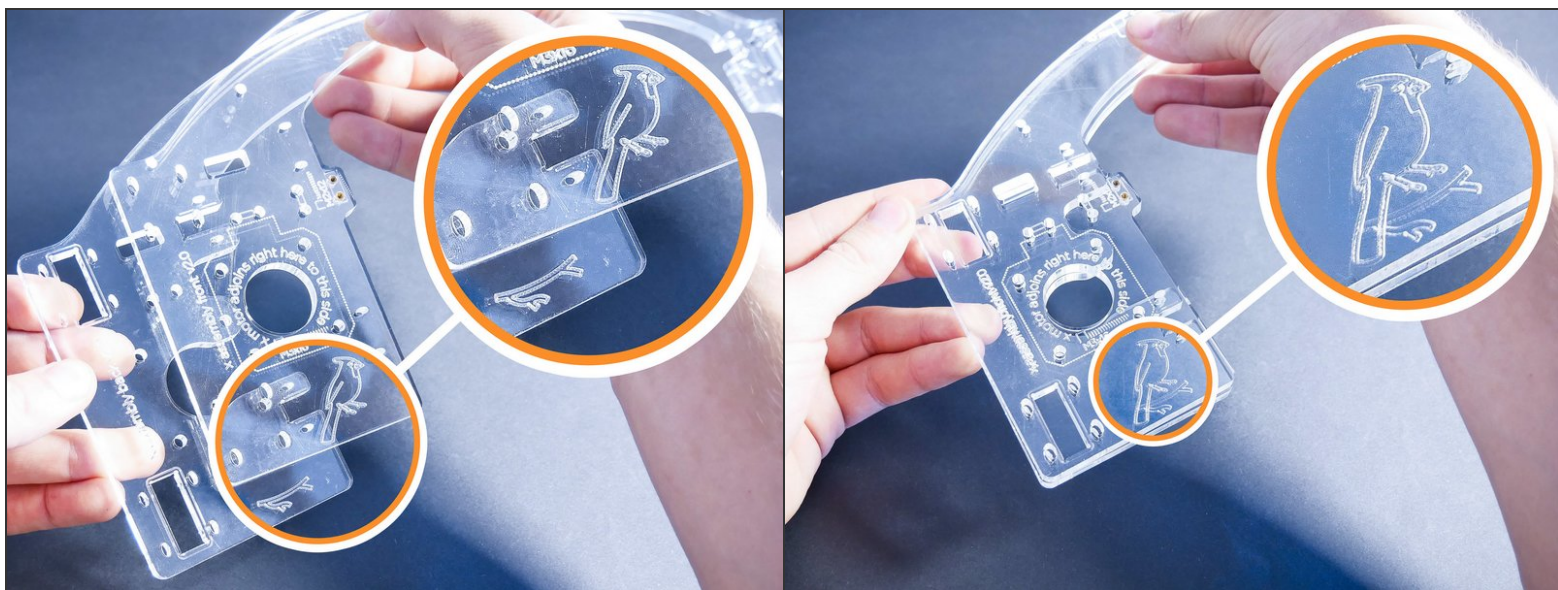
## Step 10



- If you do not clean the pieces now, your fingerprints will remain trapped in between them forever.



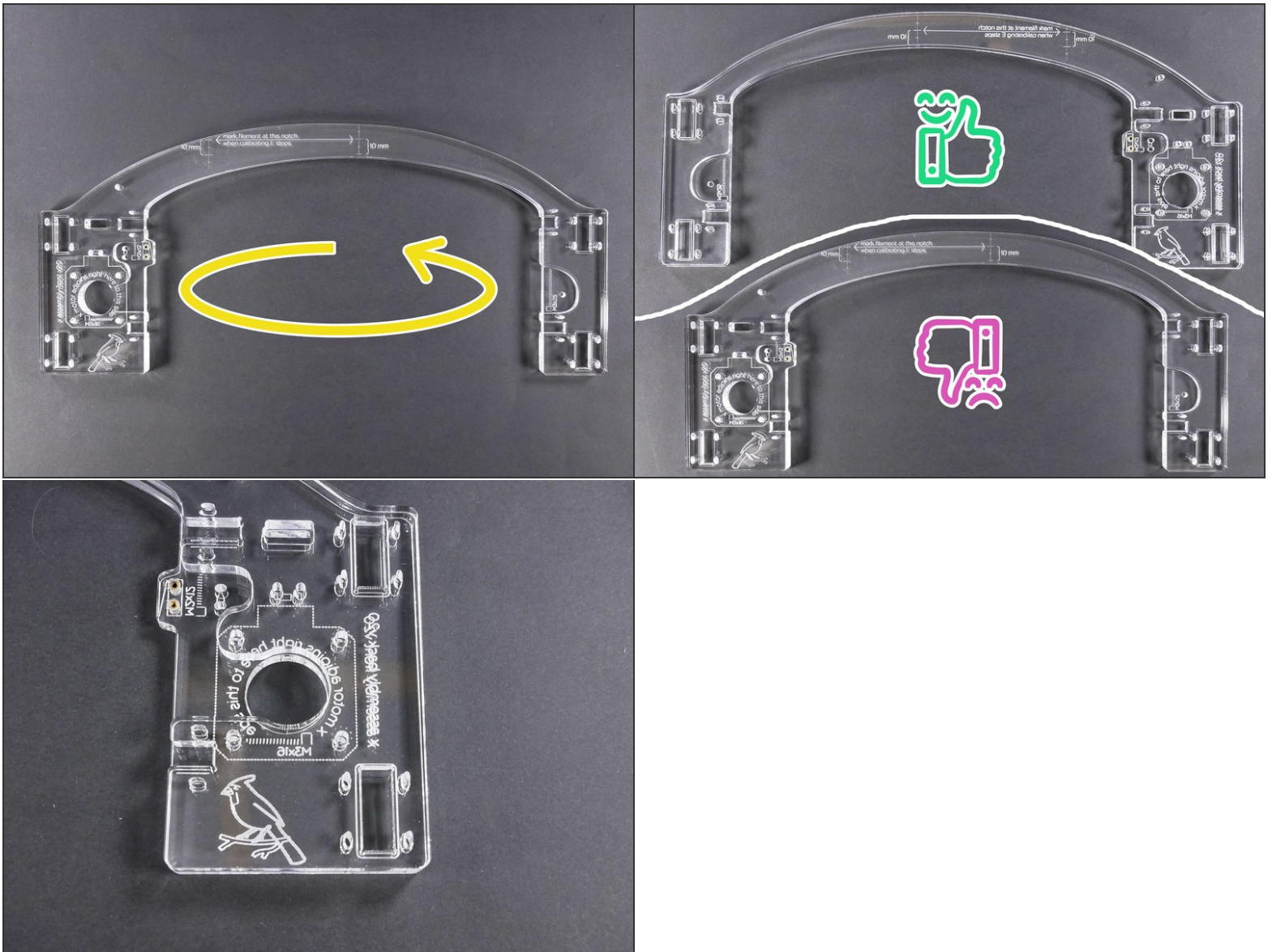
## Step 11



- Put the 'bird' piece on top of the 'branch' piece.
- ❗ Obviously, the bird gets to sit on top of the branch, and *not* the other way around. Have you ever seen a branch sitting on top of a bird?!



## Step 12



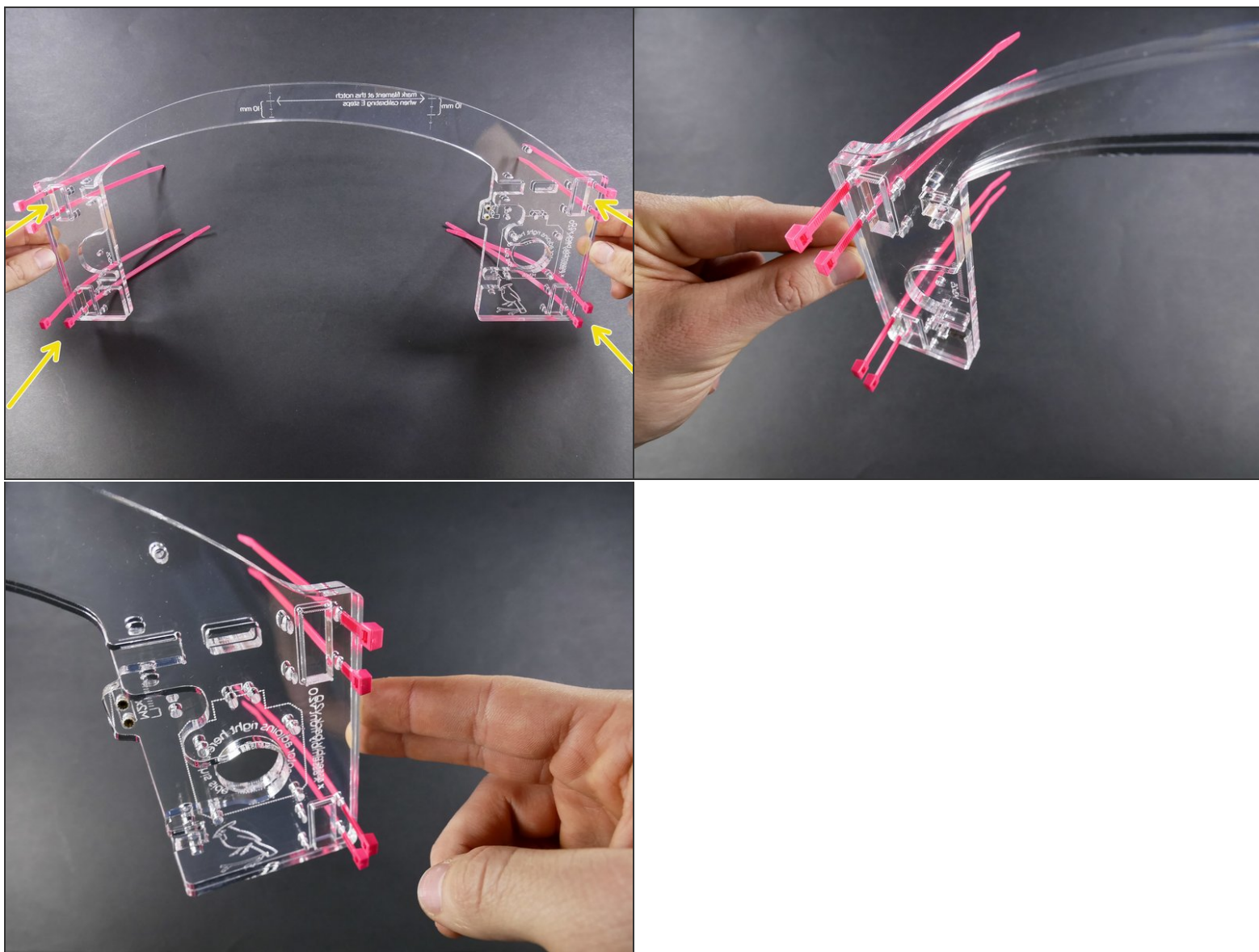
- Turn the aligned pieces upside down.

## Step 13



- Insert wisdom here.

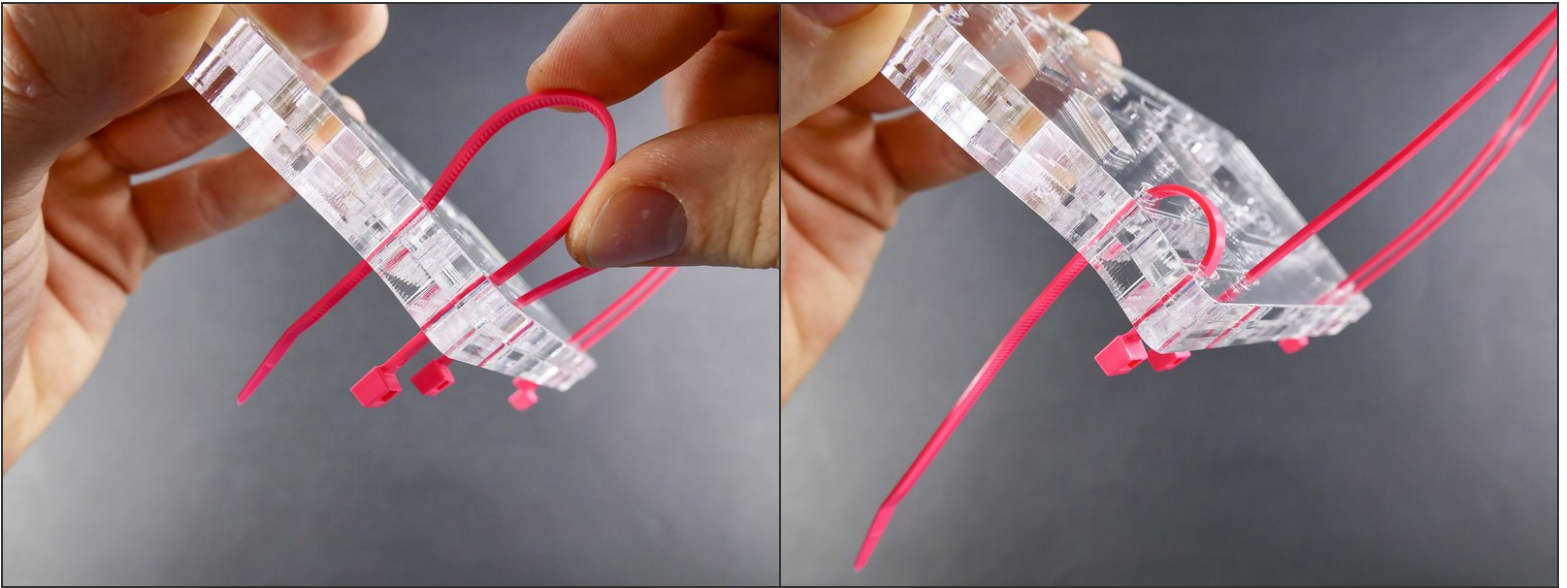
## Step 14



- Insert wisdom here.

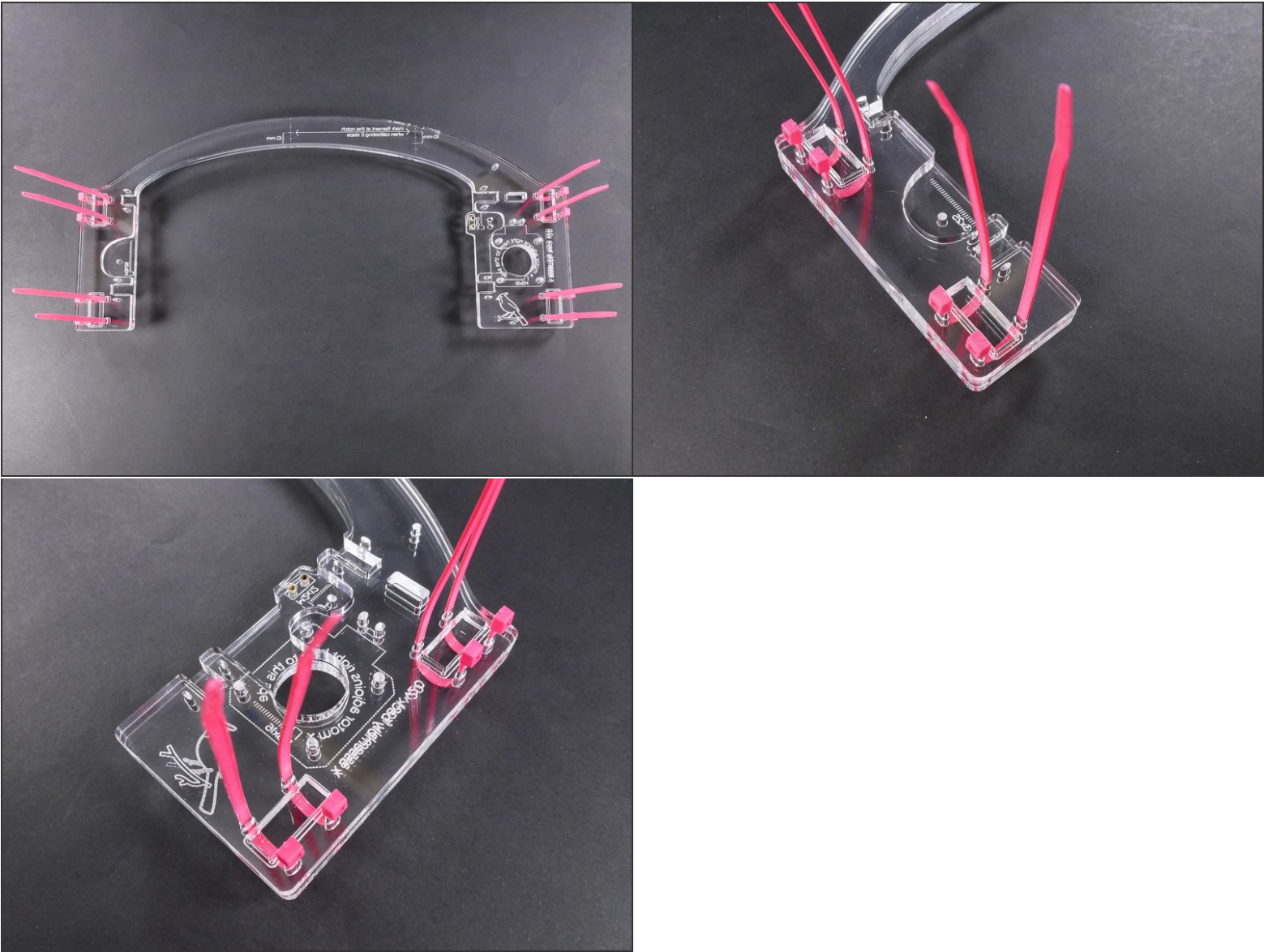


## Step 15



- Insert wisdom here.

Step 16



● Insert wisdom here.

## Step 17



- Insert wisdom here.

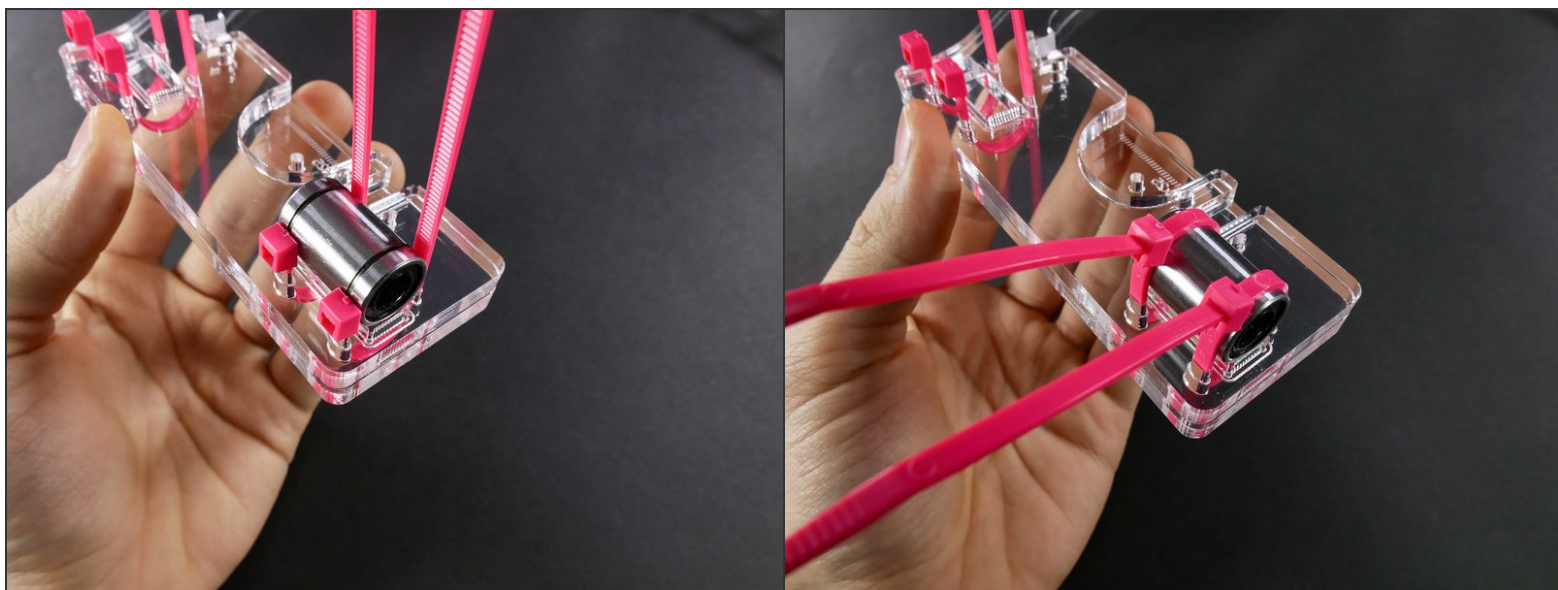


## Step 18



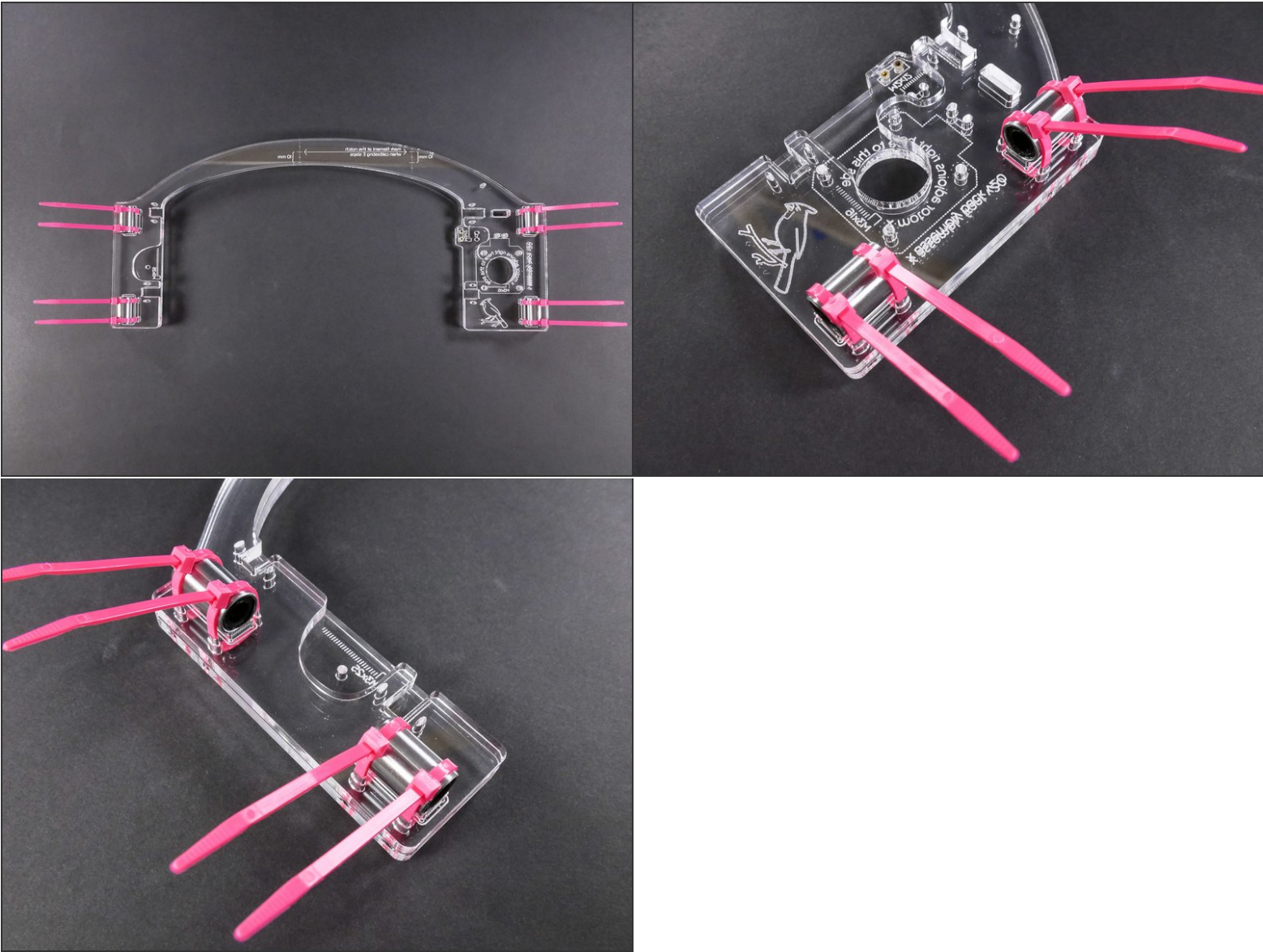
- Just like you did with the [Y bearings](#), put a drop of oil into the X bearings.

## Step 19



- Insert wisdom here.

Step 20



● Insert wisdom here.



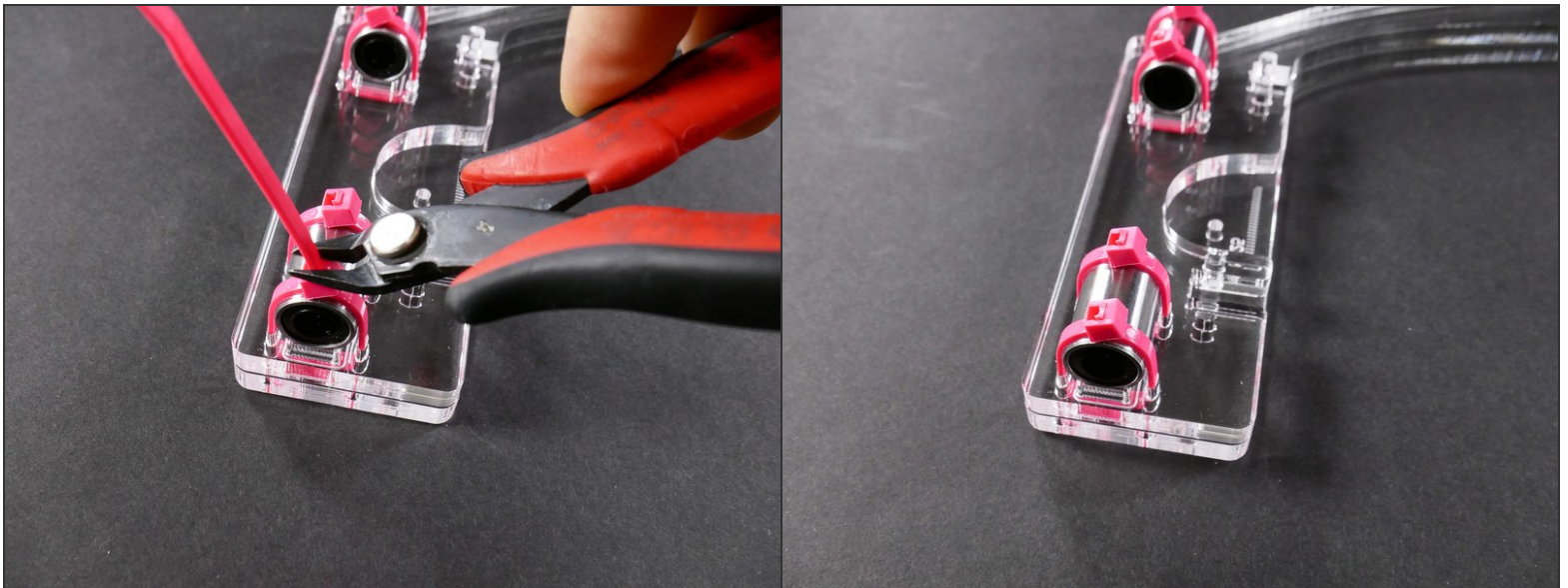
## Step 21 — ► Video: Tighten the Linear Bearings



- ► Video: Tighten the Linear Bearings

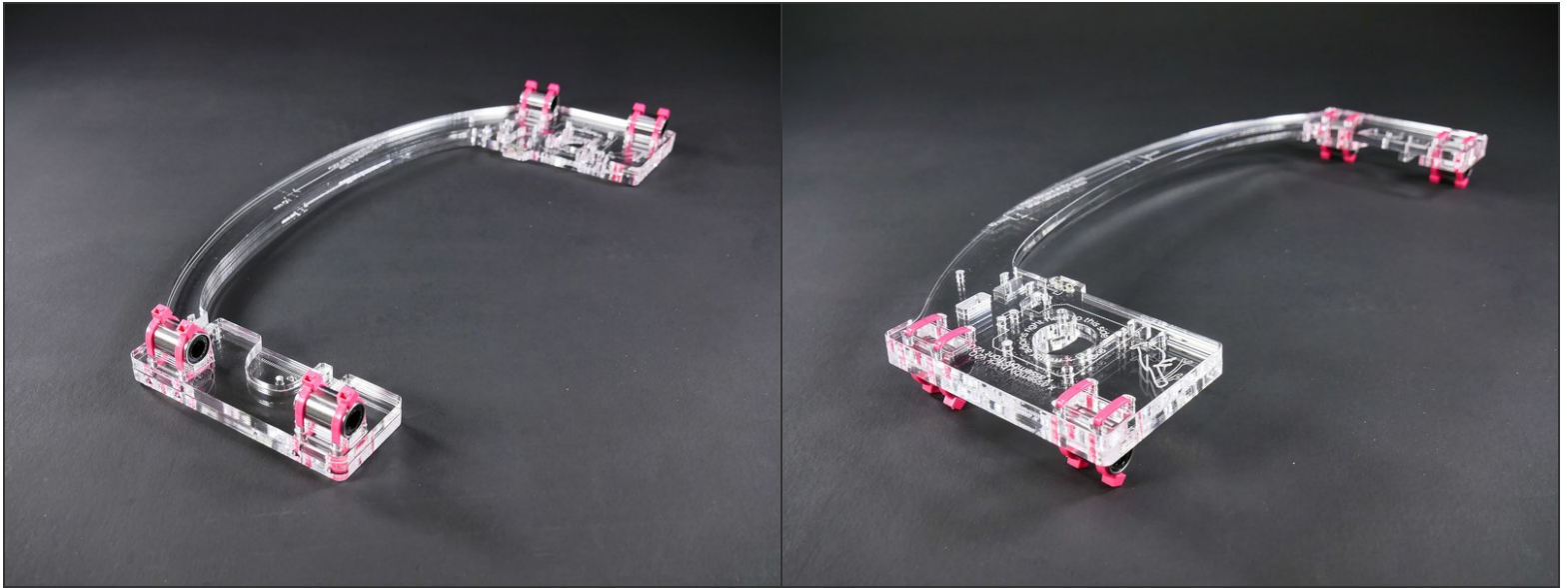
⚠ Tighten all **8 zip ties** as well as you can. We want these to be solid.

## Step 22



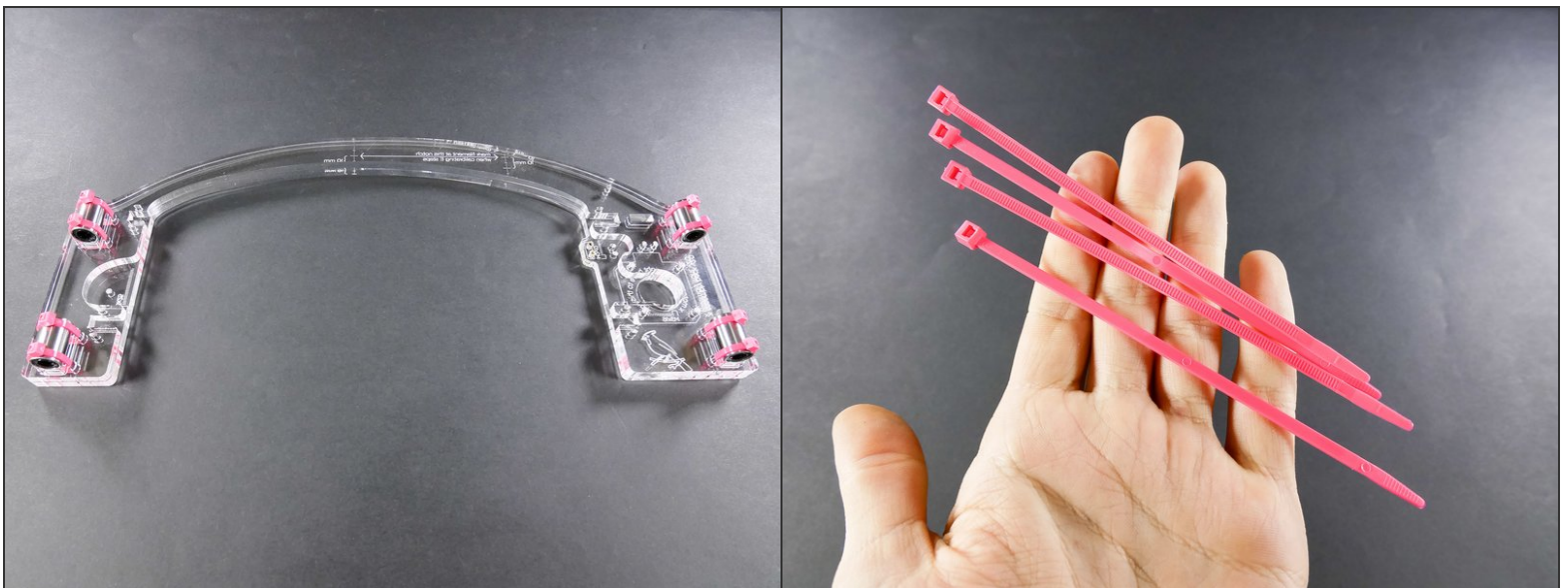
- Insert wisdom here.

## Step 23 — Looking good!



- Insert wisdom here.

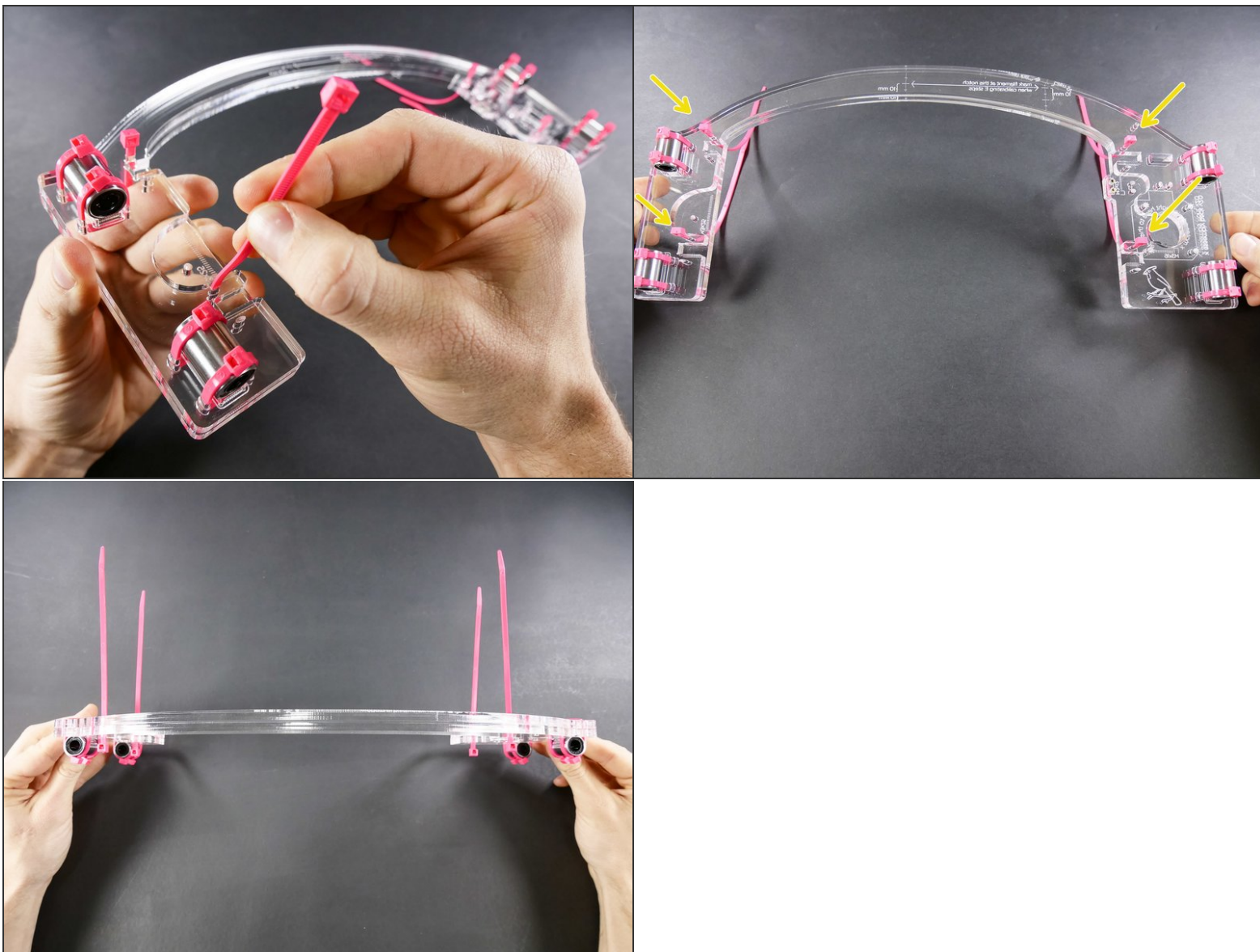
## Step 24 — X Carriage and Smooth Rods



- Insert wisdom here.



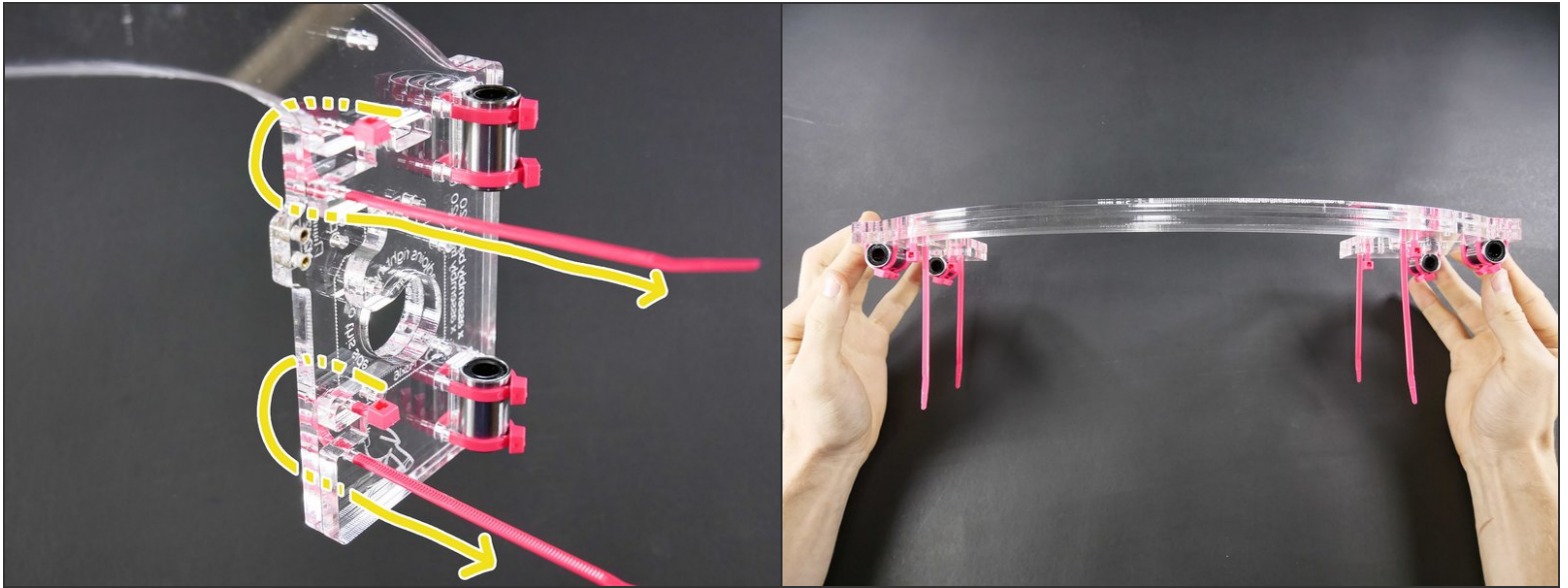
## Step 25



- Insert wisdom here.

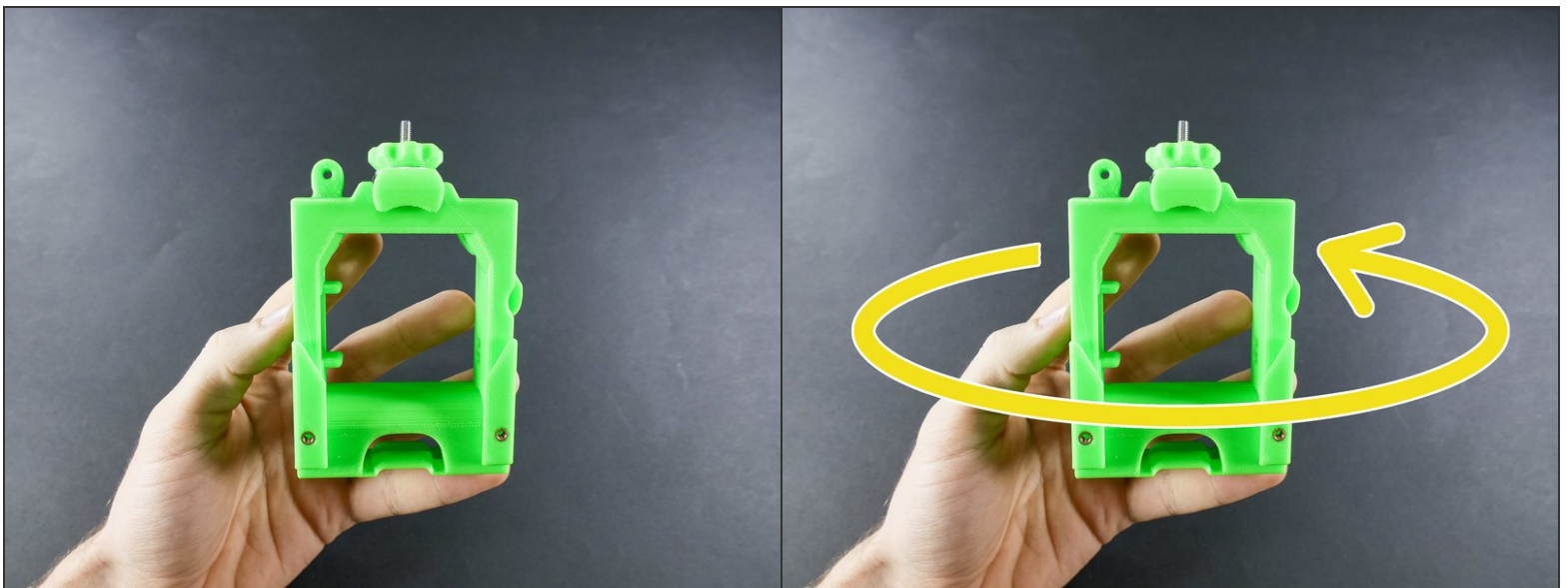


## Step 26



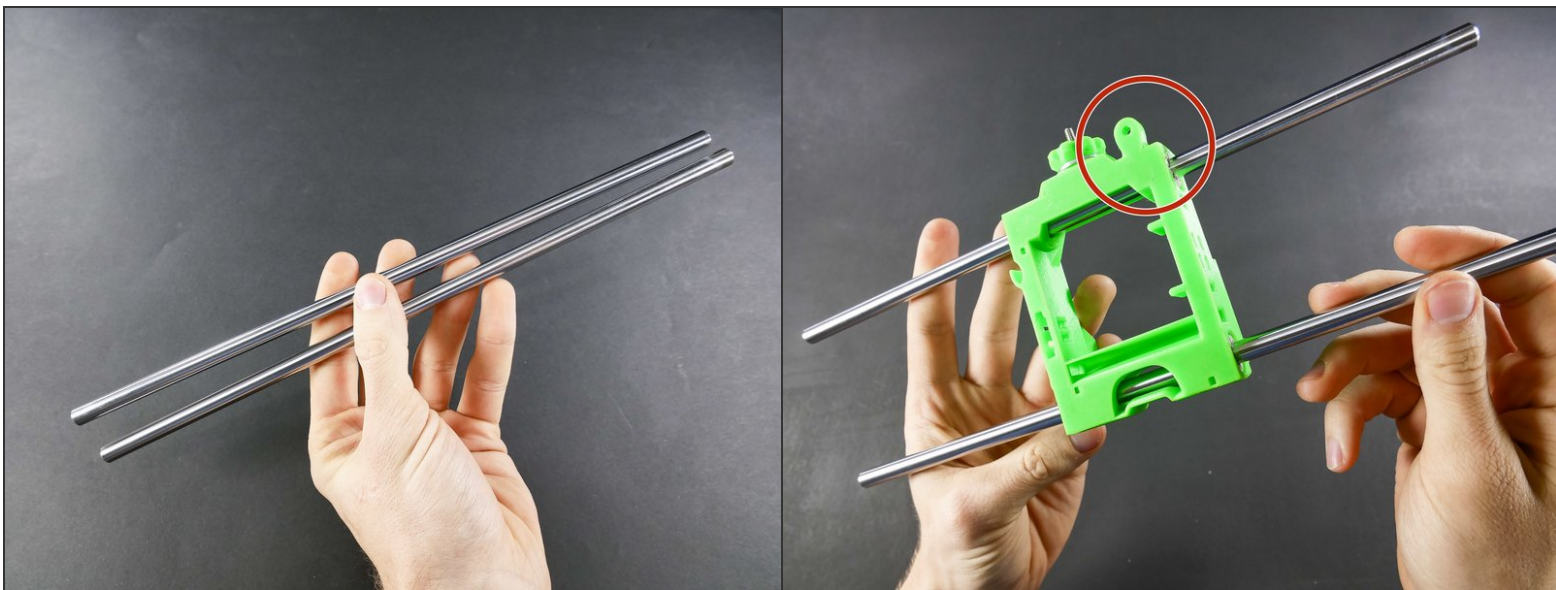
- Insert wisdom here.

## Step 27



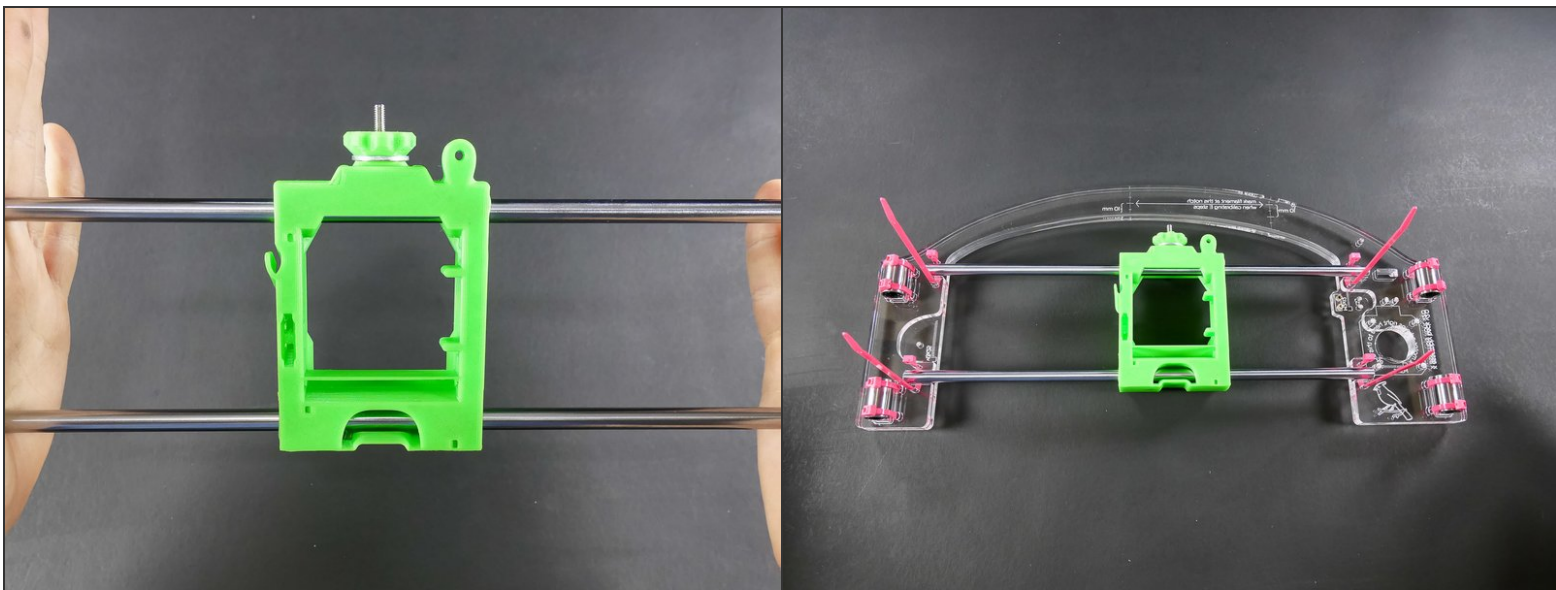
- Insert wisdom here.

## Step 28



⚠ Make sure the X carriage 'ear' is on the right.

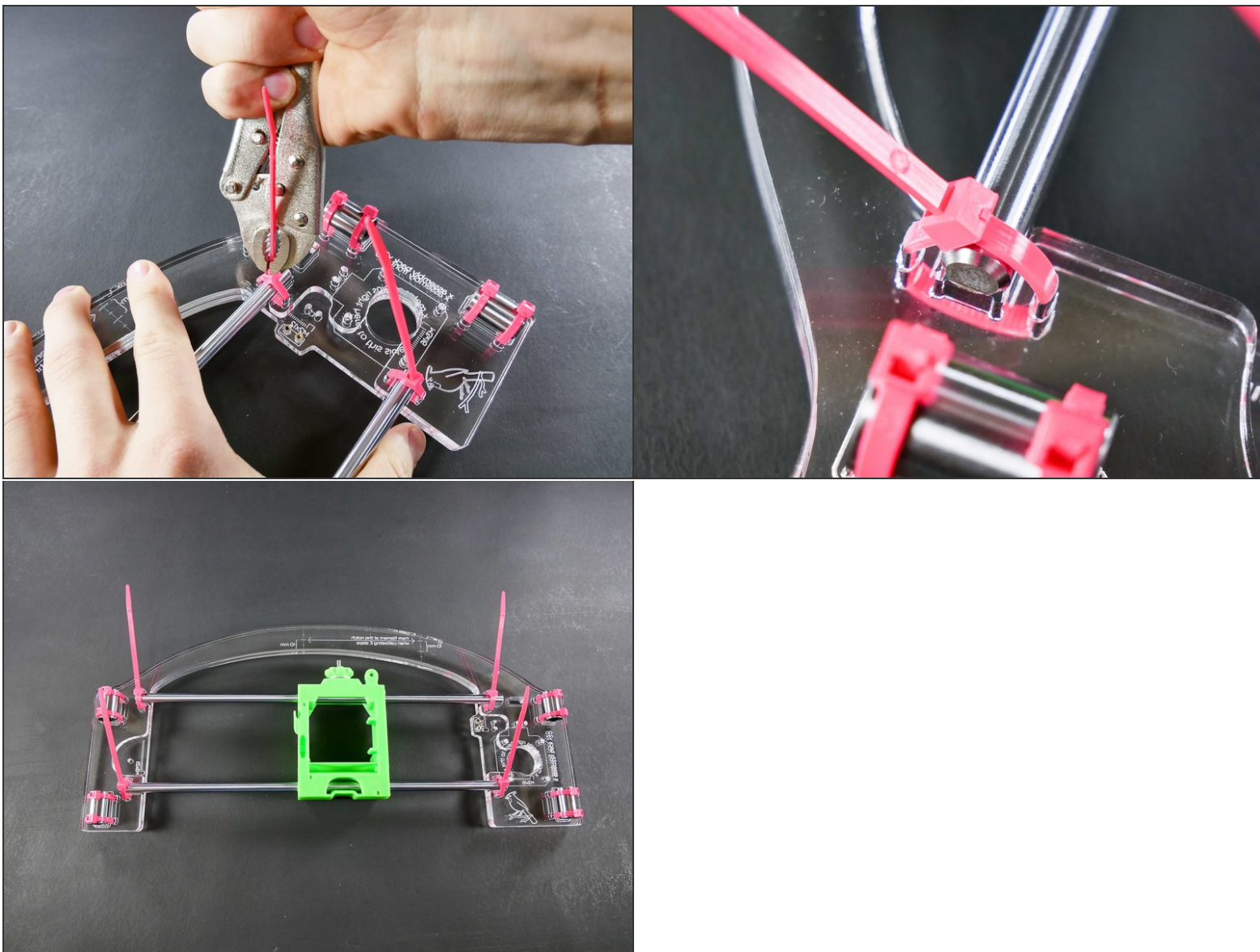
## Step 29



- Insert wisdom here.



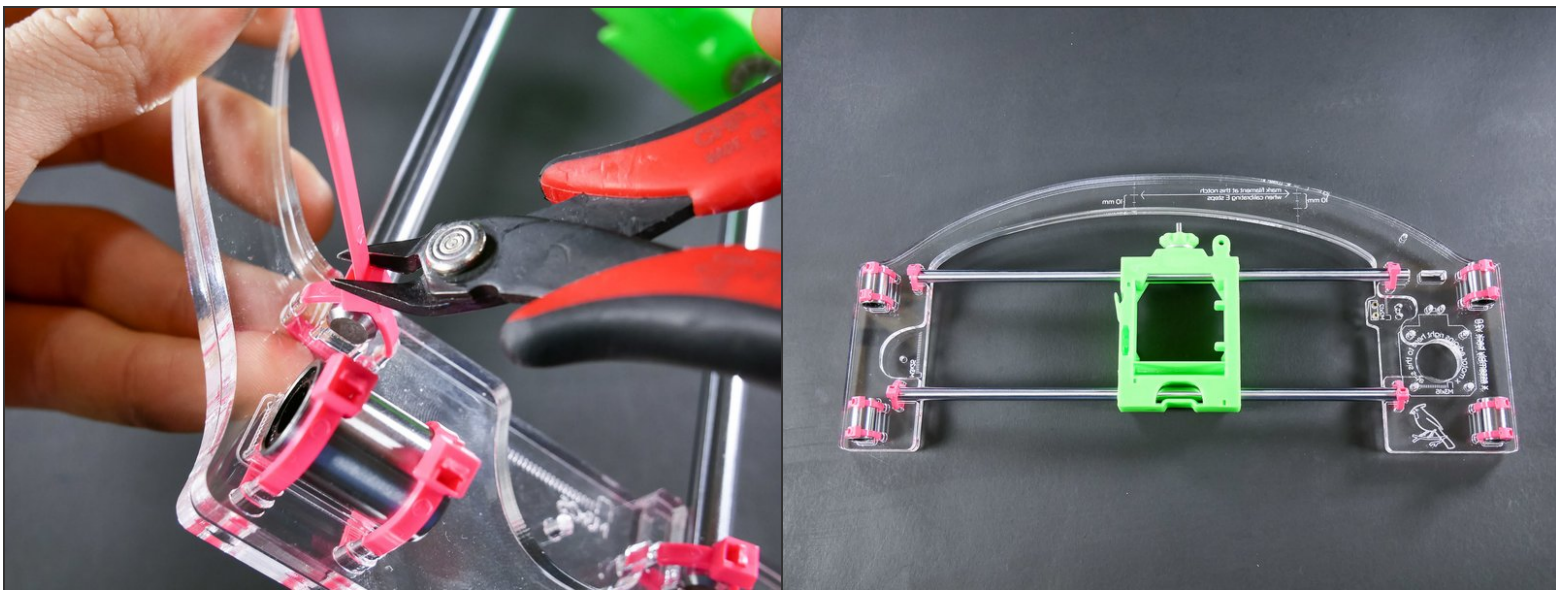
## Step 30



- Insert wisdom here.

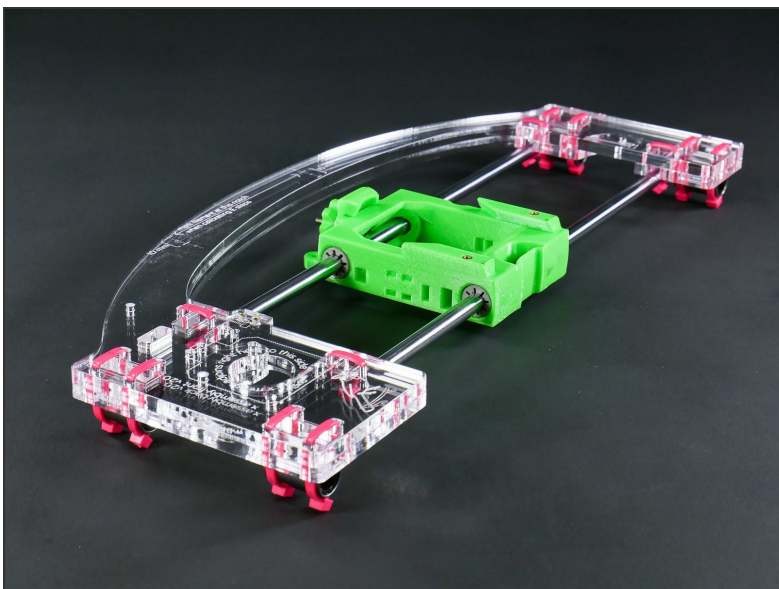


## Step 31



- Insert wisdom here.

## Step 32 — Looking good!



- Insert wisdom here.

## What's Next?

Get back to the [← Makers Kit Build Flow](#) and continue with the next guide.