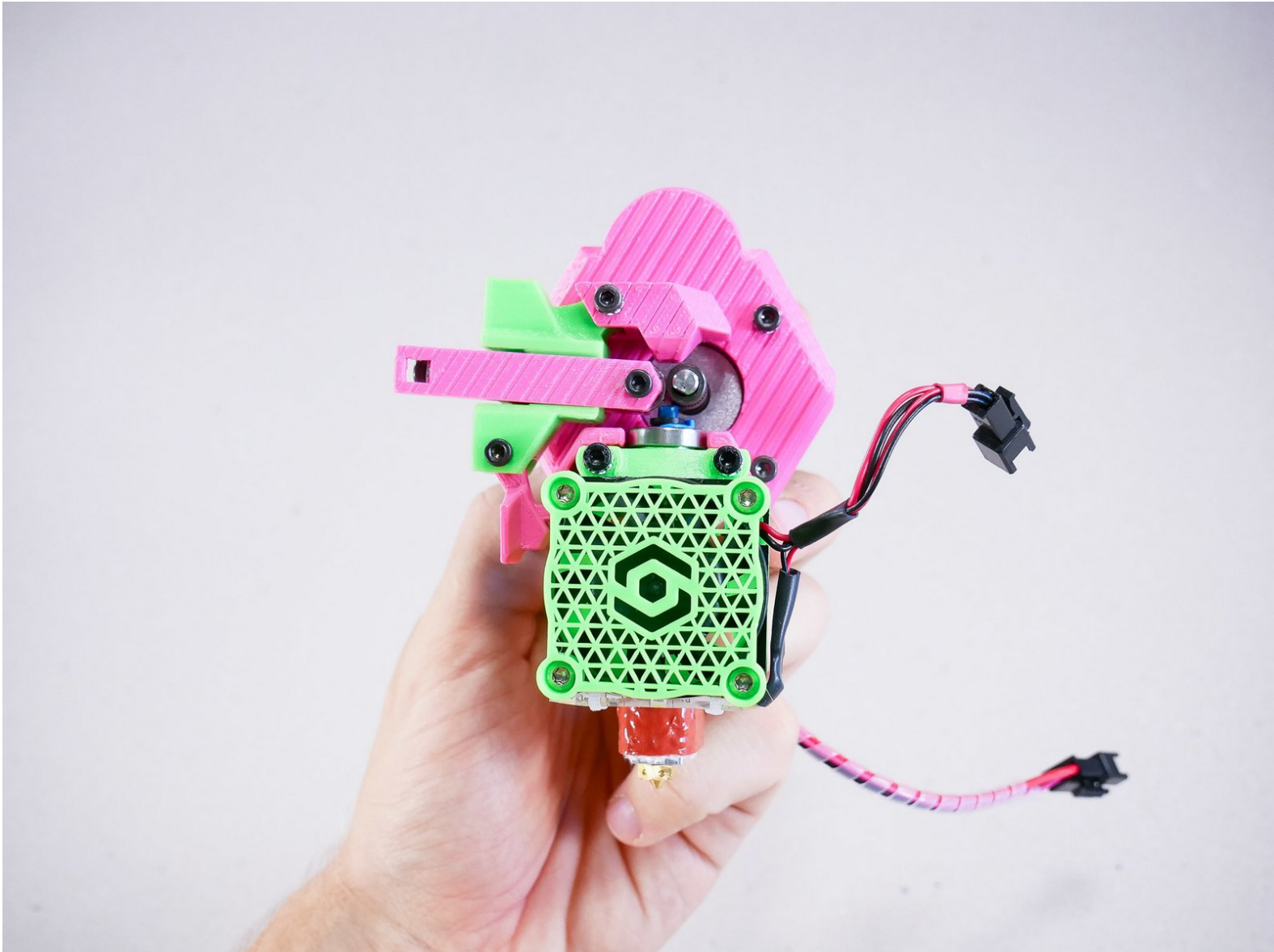




Assemble the Extruder

In this guide, we prepare the extruder.



INTRODUCTION

The heart of the printer, the Extruder is responsible for melting filament and extruding it with high precision out of a small orifice (hole) in the nozzle.

Not the guide you are looking for?

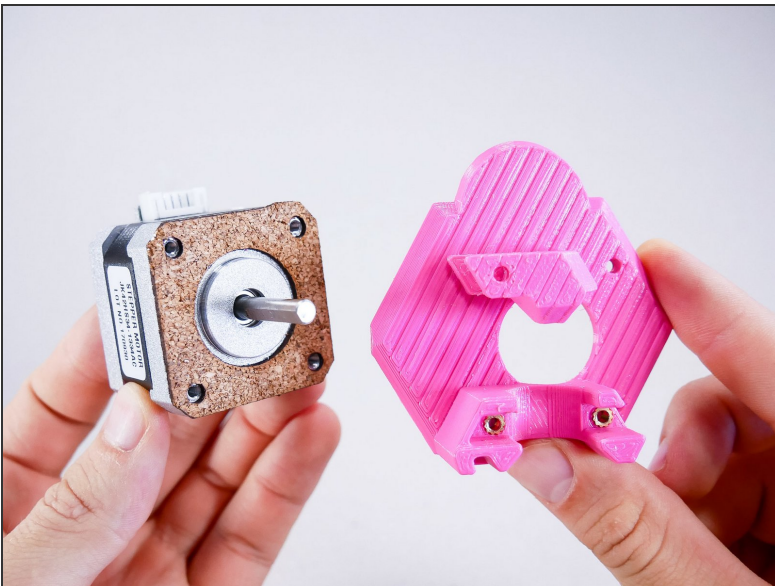
Go back to the [← Makers Kit Build Flow.](#)

Step 1 — Assemble the Extruder



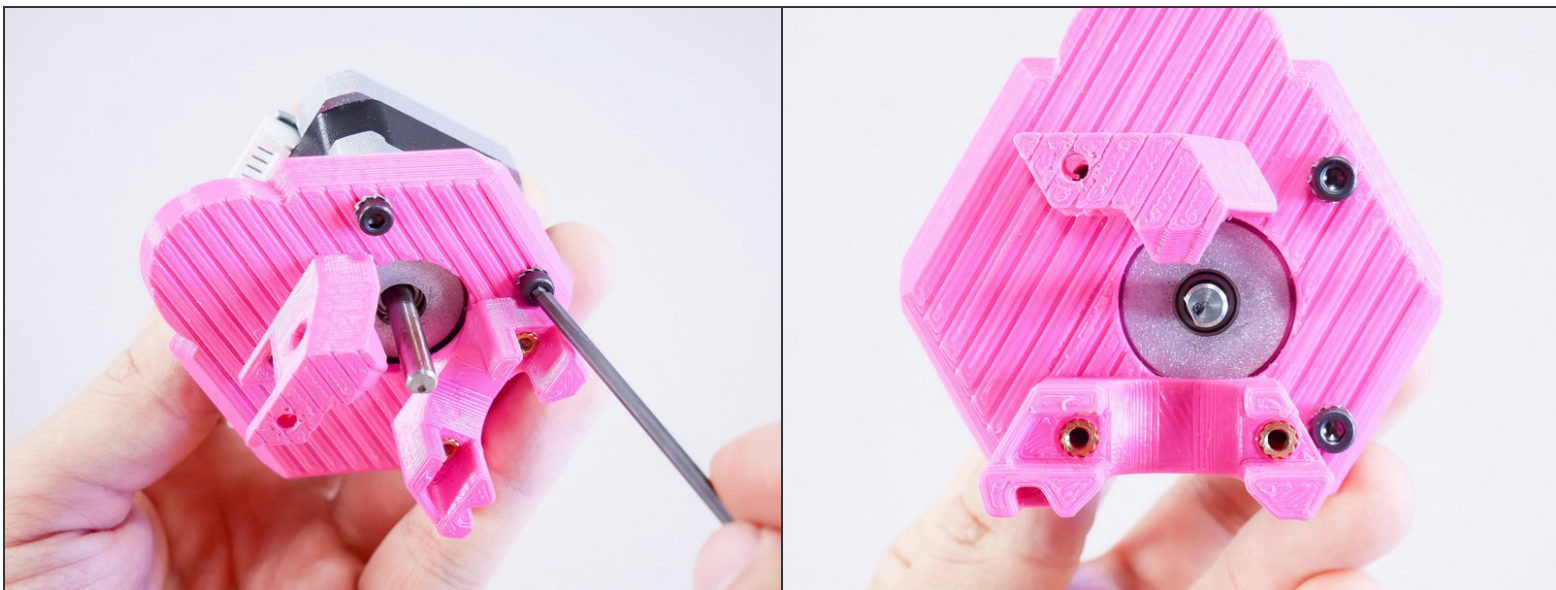
- M3x12 socket head

Step 2



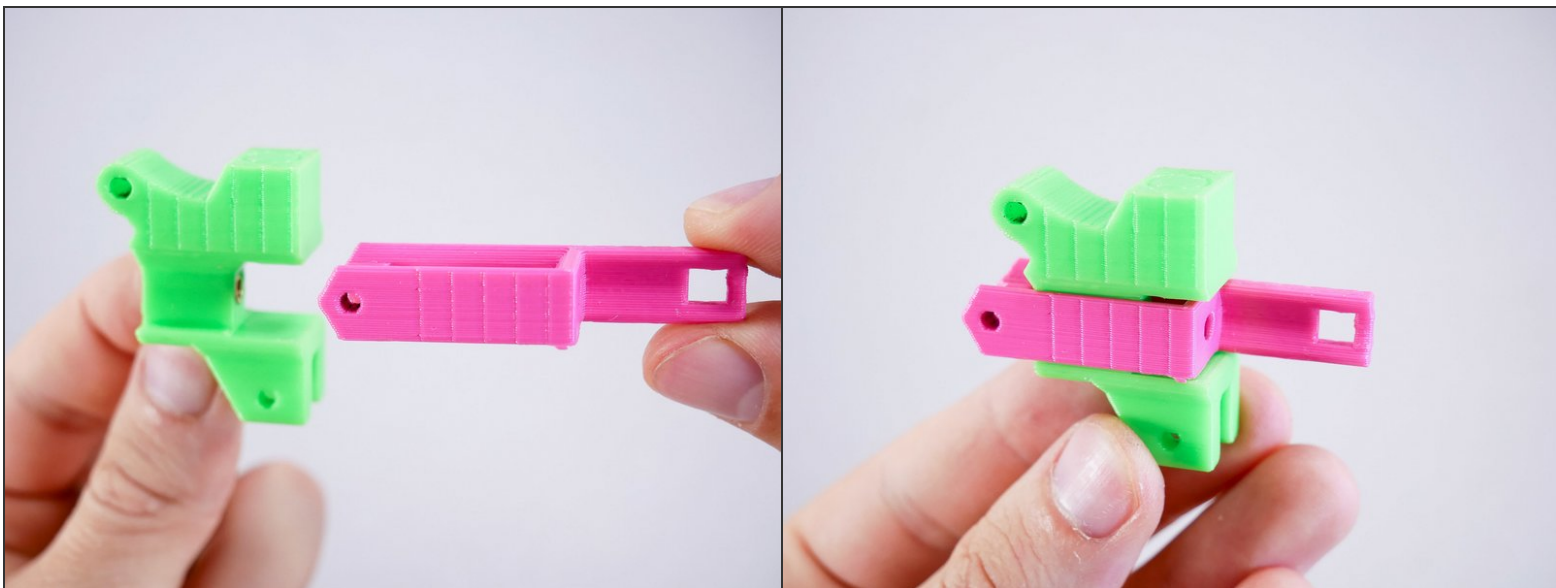
- Insert wisdom here.

Step 3

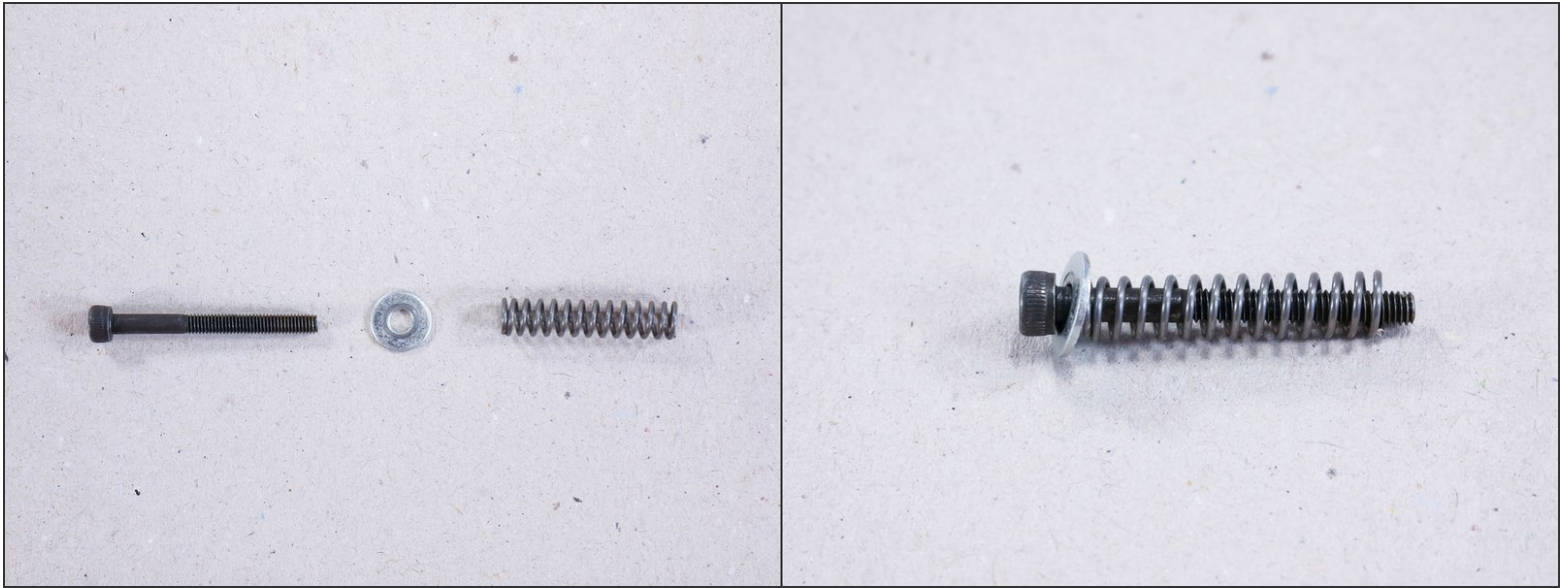


- M3x10 socket head

Step 4

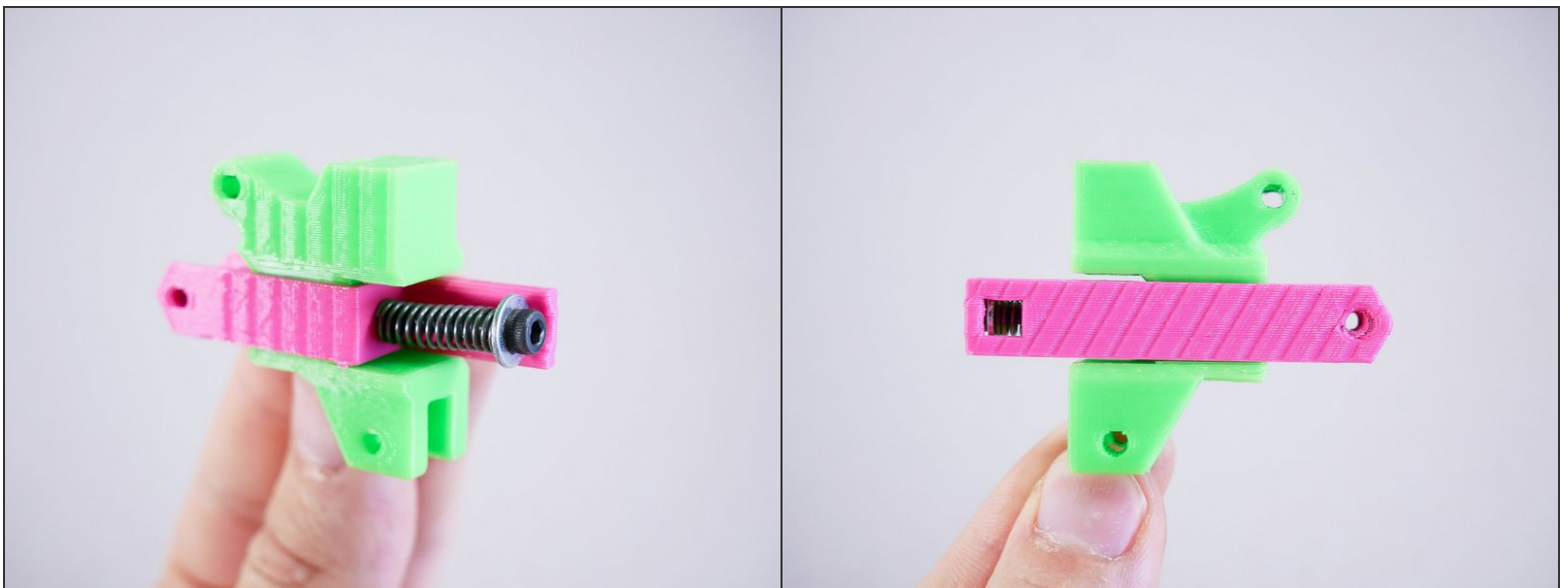


Step 5



- M3x30 socket head

Step 6

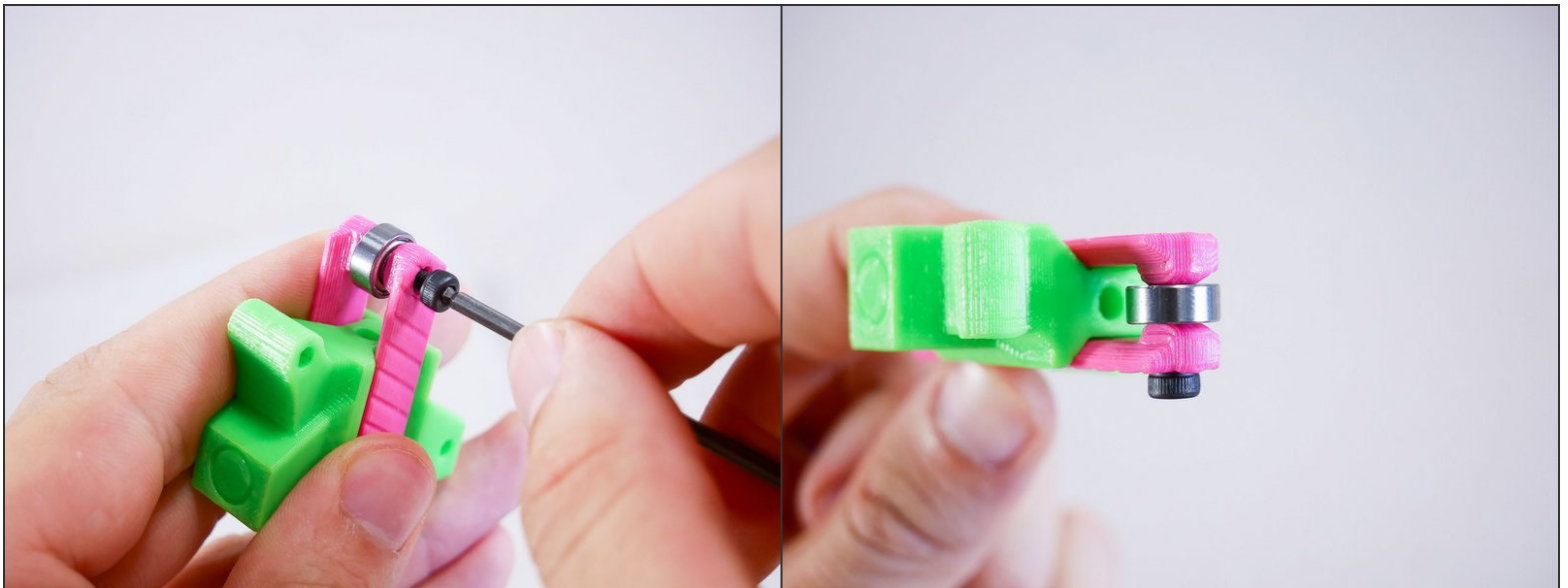


Step 7



- M3x16 socket head

Step 8



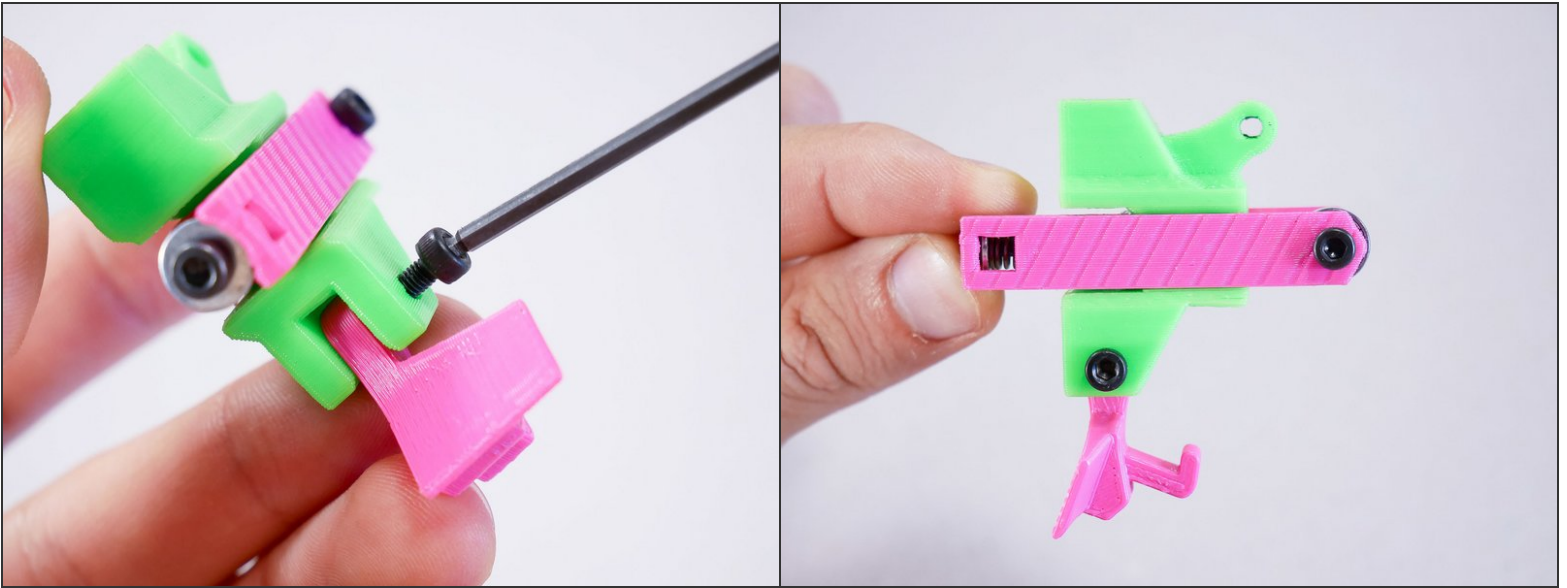
Step 9 — ► Video: Feeder Bearing (3s, no narration)

- ► Video: Feeder Bearing (3s, no narration)
- The bearing should spin. If it doesn't, loosen the screw a little bit.

Step 10

- M3x16 socket head

Step 11



- M3x16 socket head

Step 12 — ► Video: Loose Latch (3s, no narration)



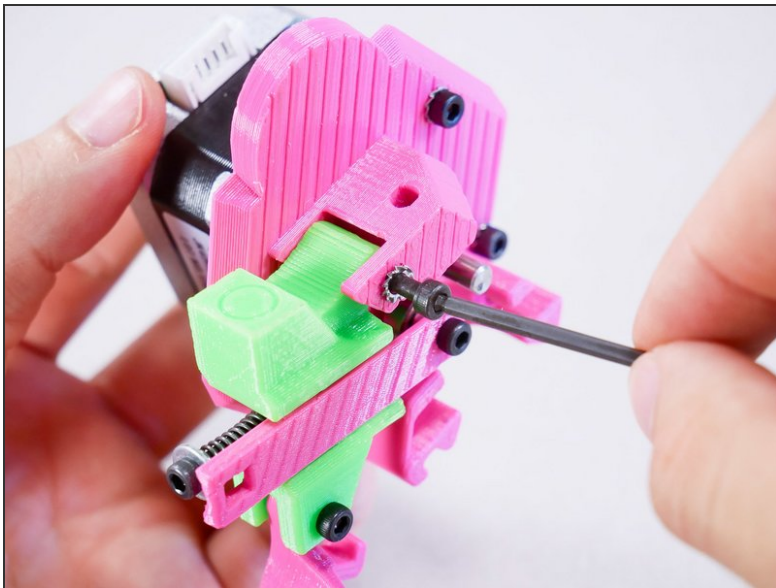
- ► Video: Loose Latch (3s, no narration)

Step 13



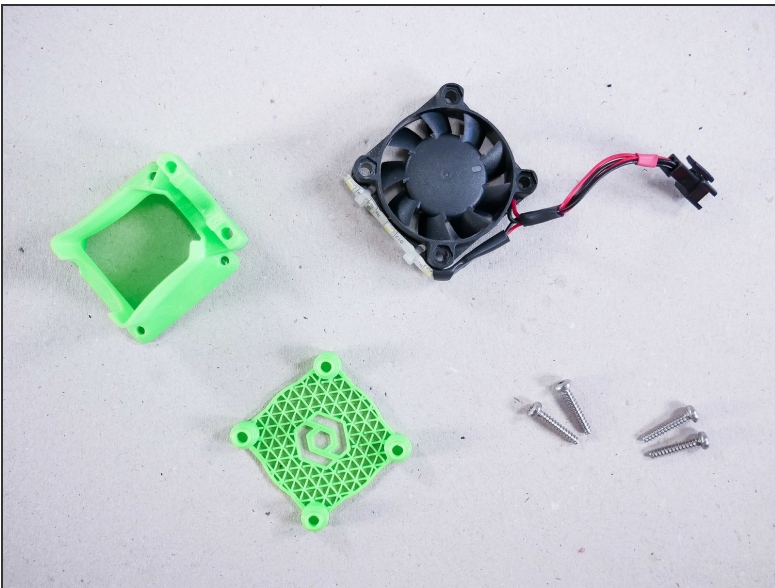
- M3x30 socket head

Step 14



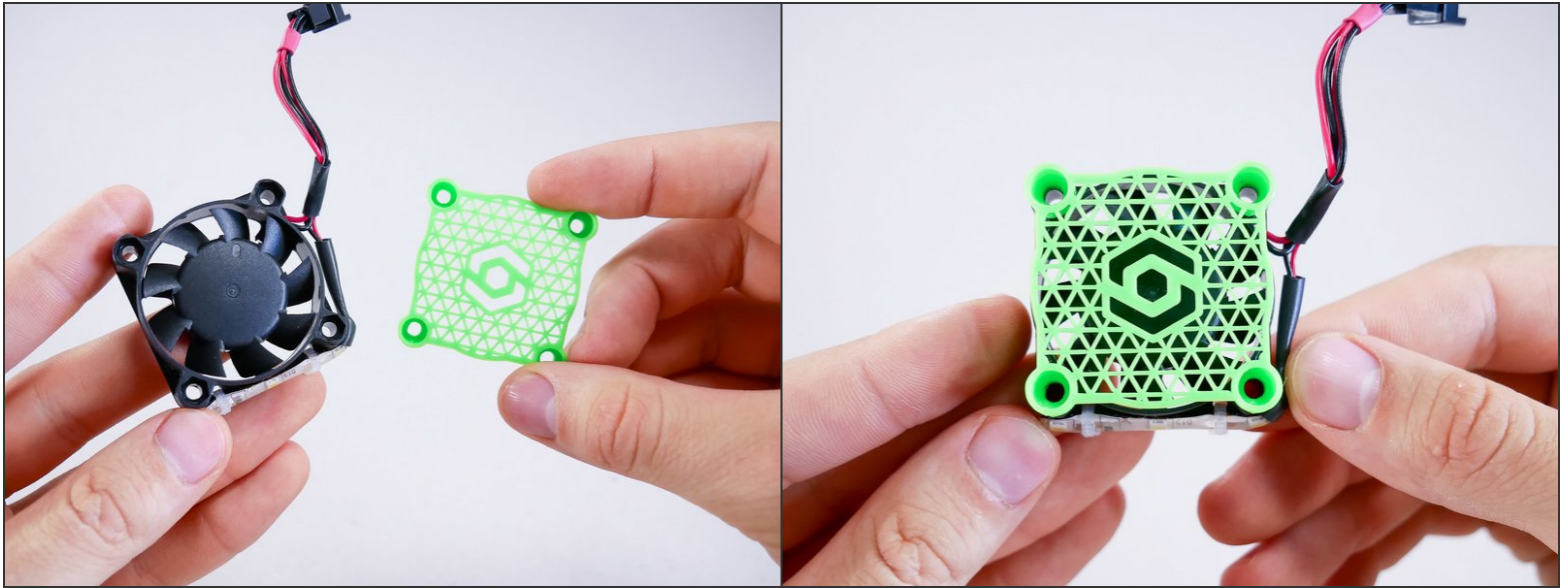
Step 15 — ► Video: Feeder Arm Rotating (3s, no narration)

► Video: Feeder Arm Rotating (3s, no narration)

Step 16 — You'll need:

- Hotend shroud
- Hotend fan cover
- Hotend fan
- Plastite screws (super smart screws specifically designed not to get loose in plastic) (4)

Step 17



- Make sure the LED strip is at the bottom as shown.

Step 18

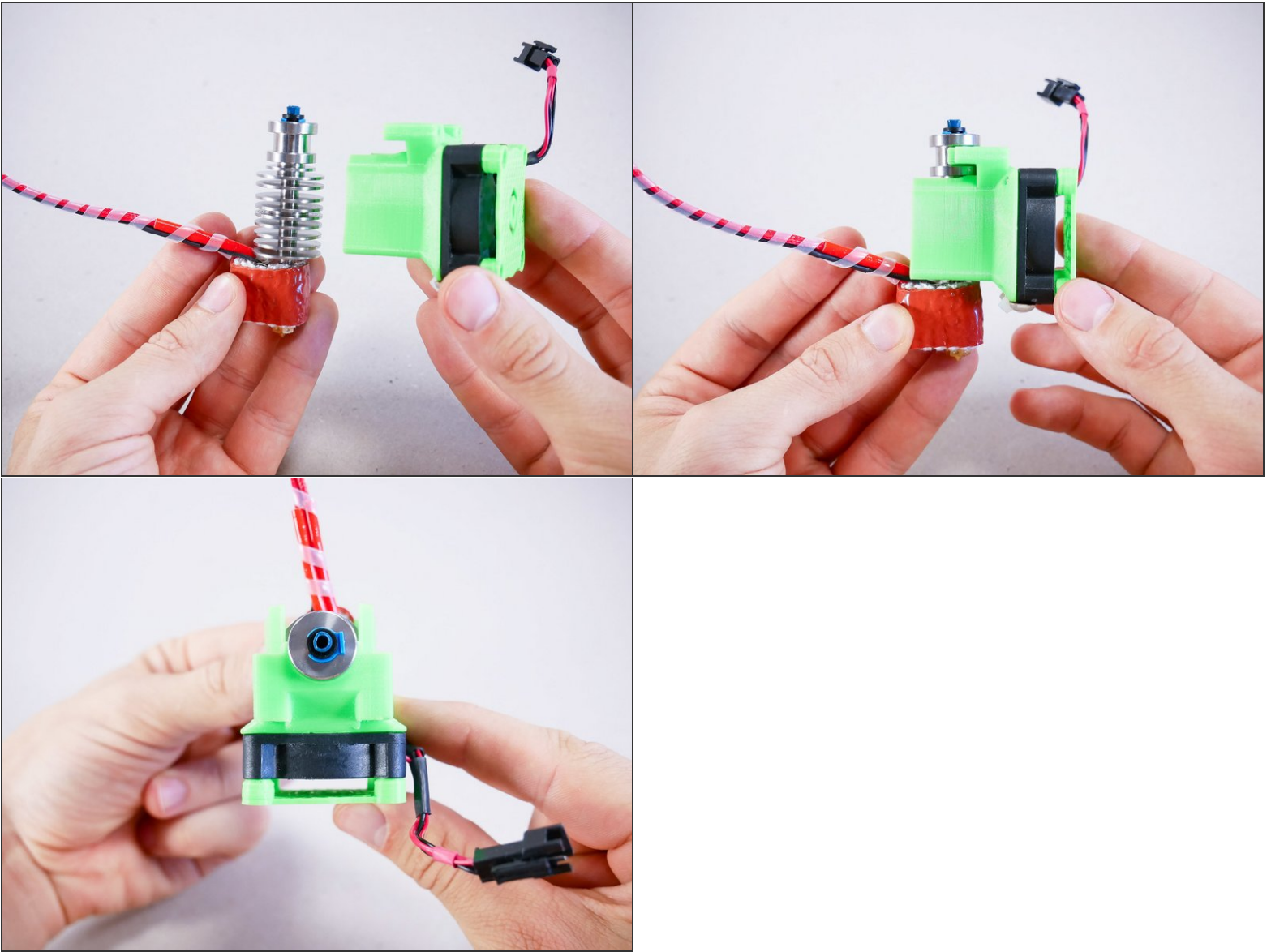


- plastite screws

Step 19



Step 20

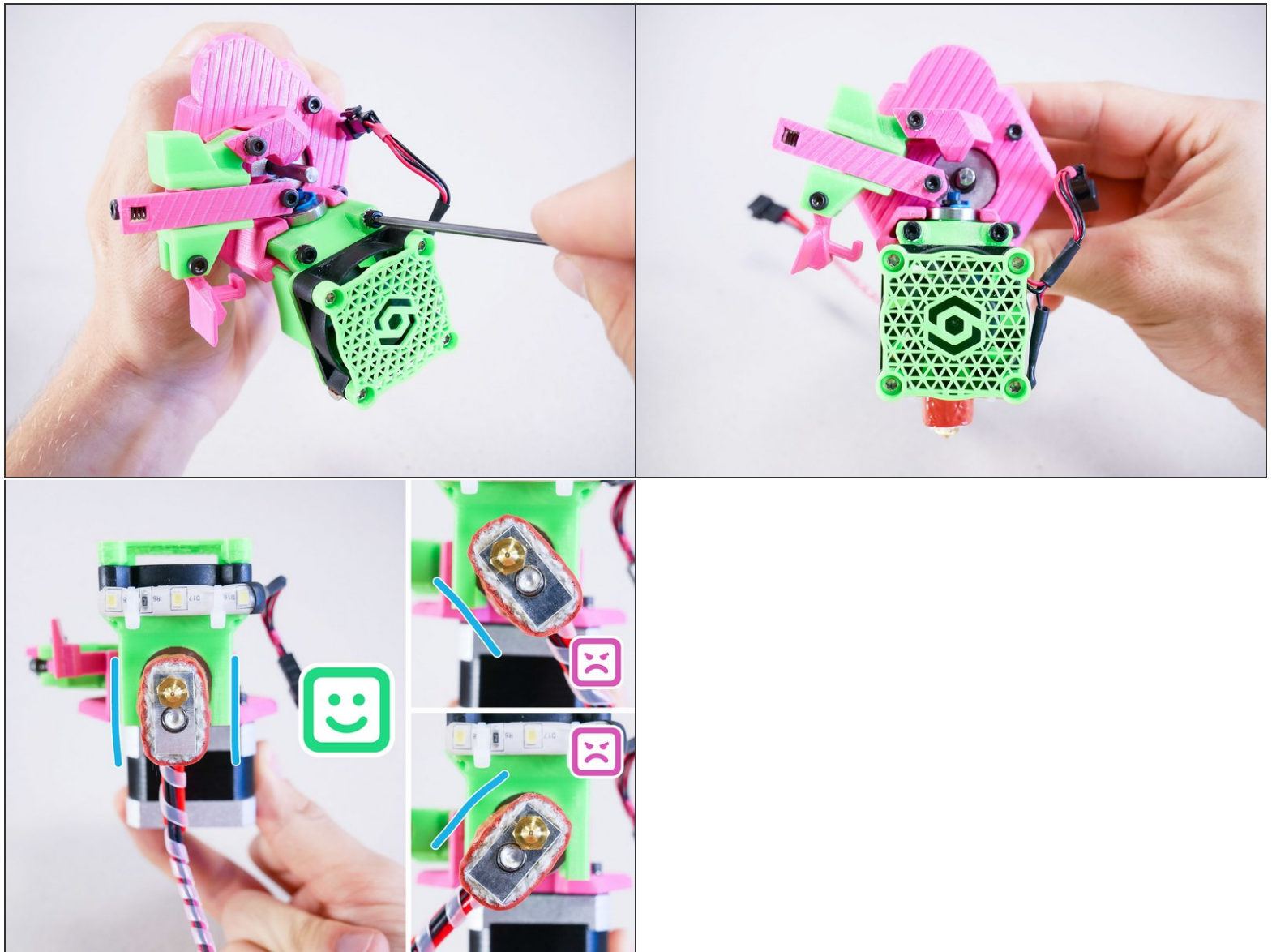


Step 21



- M3x25 socket head

Step 22

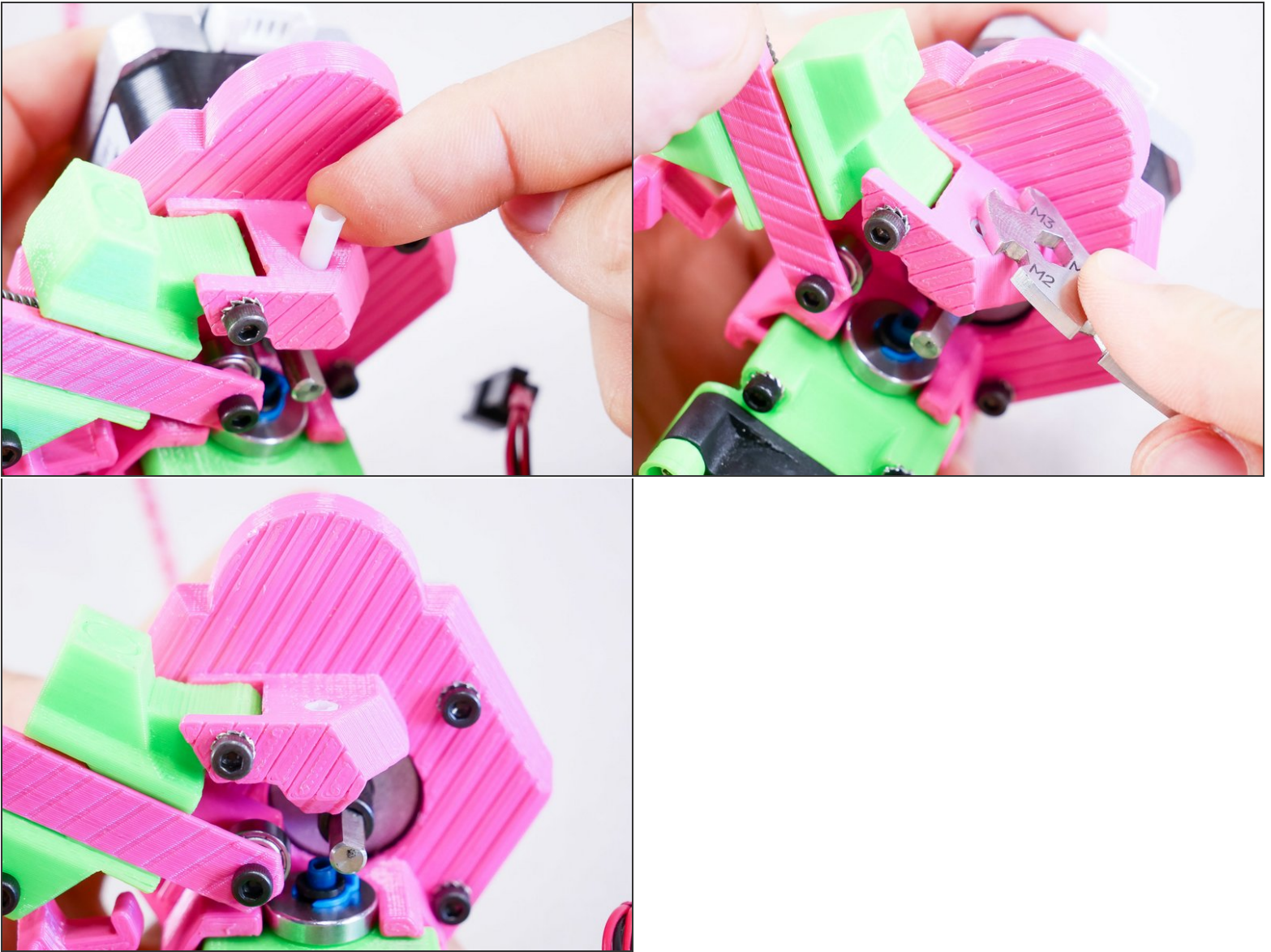


Step 23



- a short piece of PTFE tubing

Step 24



Step 25



Step 26 — ► Video: Align the Drive Gear (1min, narration)



- ► Video: Align the Drive Gear (1min, narration)

Step 27 — It's done!



What's Next?

Get back to the [← Makers Kit Build Flow](#) and continue with the next guide.