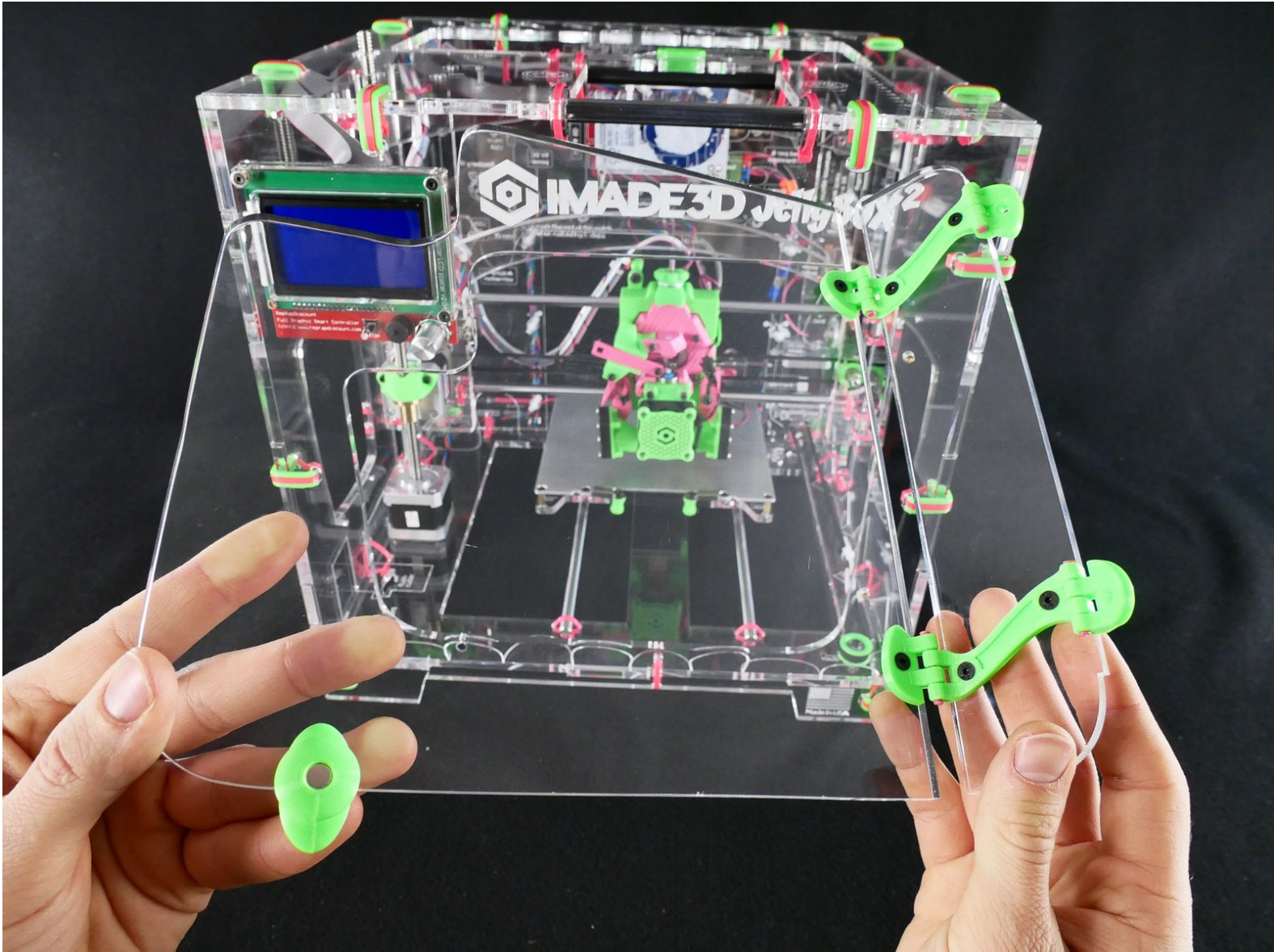




# Front Door

Front Door

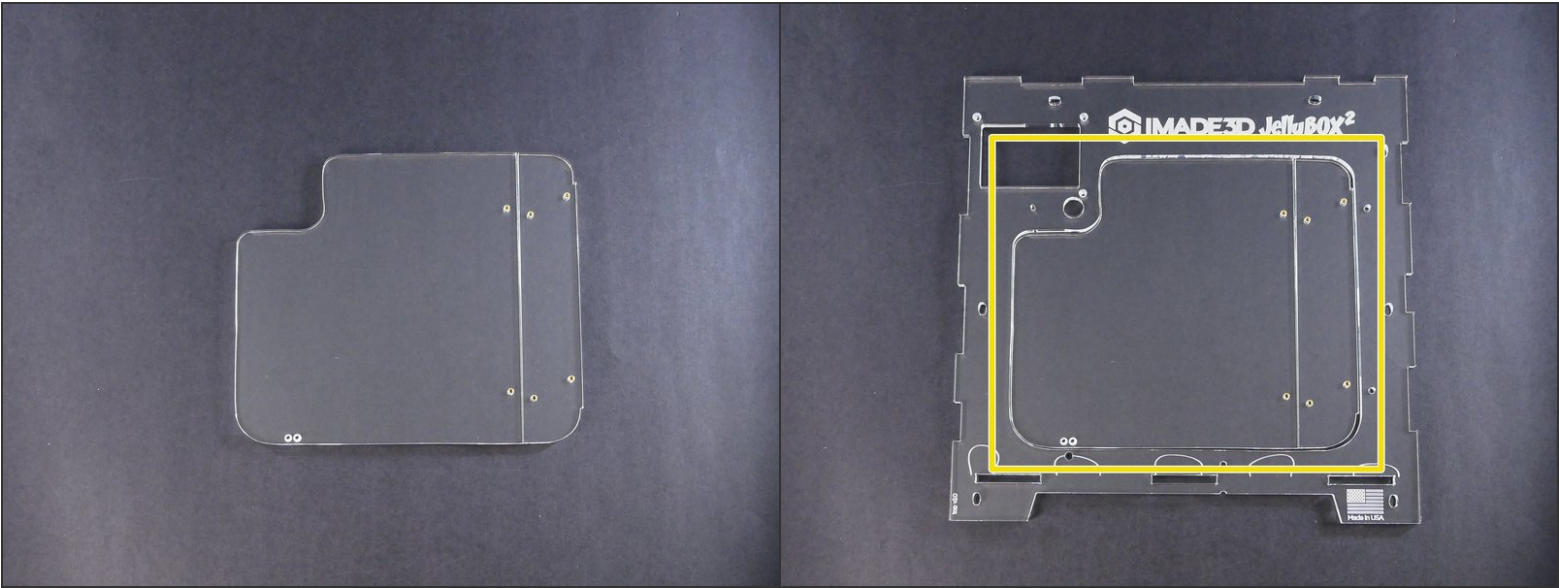


# INTRODUCTION

Not the guide you are looking for?

Go back to the [← Easy Kit Build Flow.](#)

Step 1 — ↳ Prep the Front Door



Step 2

M3 'nylock' locking nut

M3 oversized washer

M3 serrated washer

socket head screw M2x12  
12mm

M3 plastite screw

**flat head screw M3x8**  
8mm

flat head screw M3x10  
10mm

flat head screw M3x25  
25mm

socket head screw M3x10  
10mm

socket head screw M3x12  
12mm

**10\*** socket head screw M3x25  
25mm

socket head screw M3x30  
30mm

socket head screw M3x45  
45mm

socket head screw M3x60  
60mm

idlers

Y-assembly

feeder

electronics 'dogbone' stand-offs

spare parts

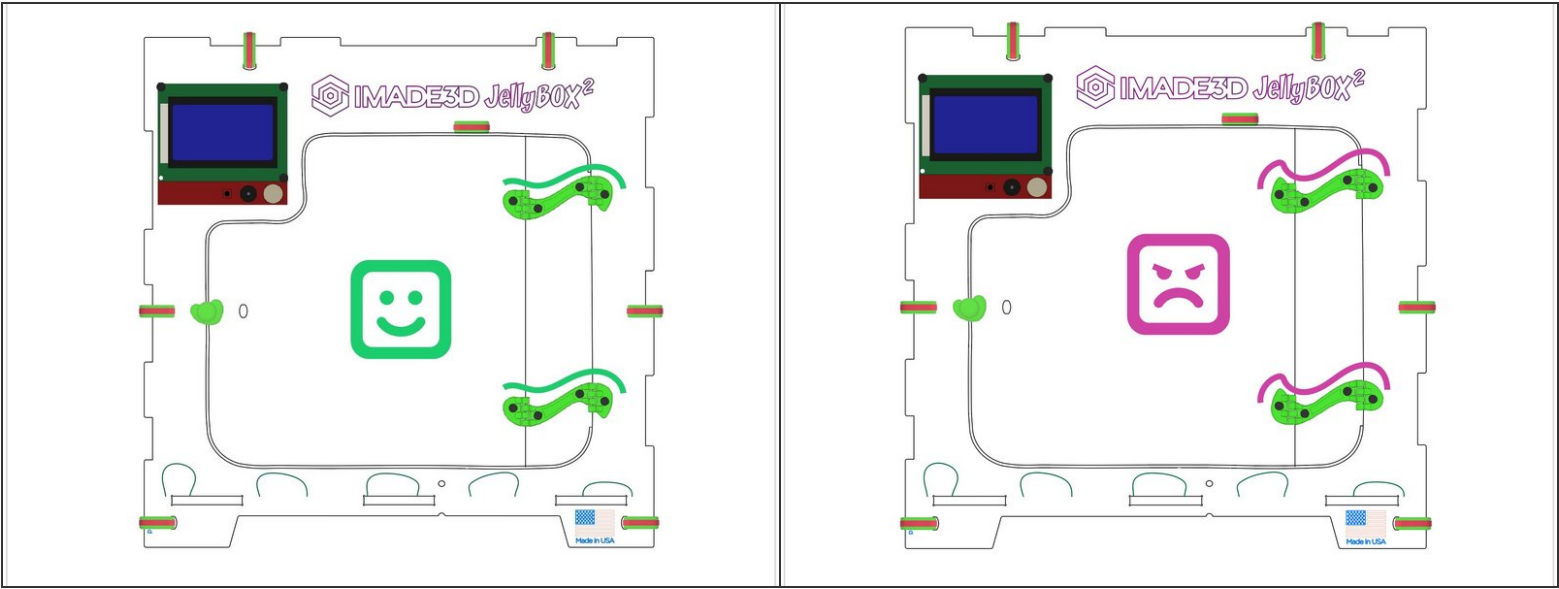
- M3x8 flat head



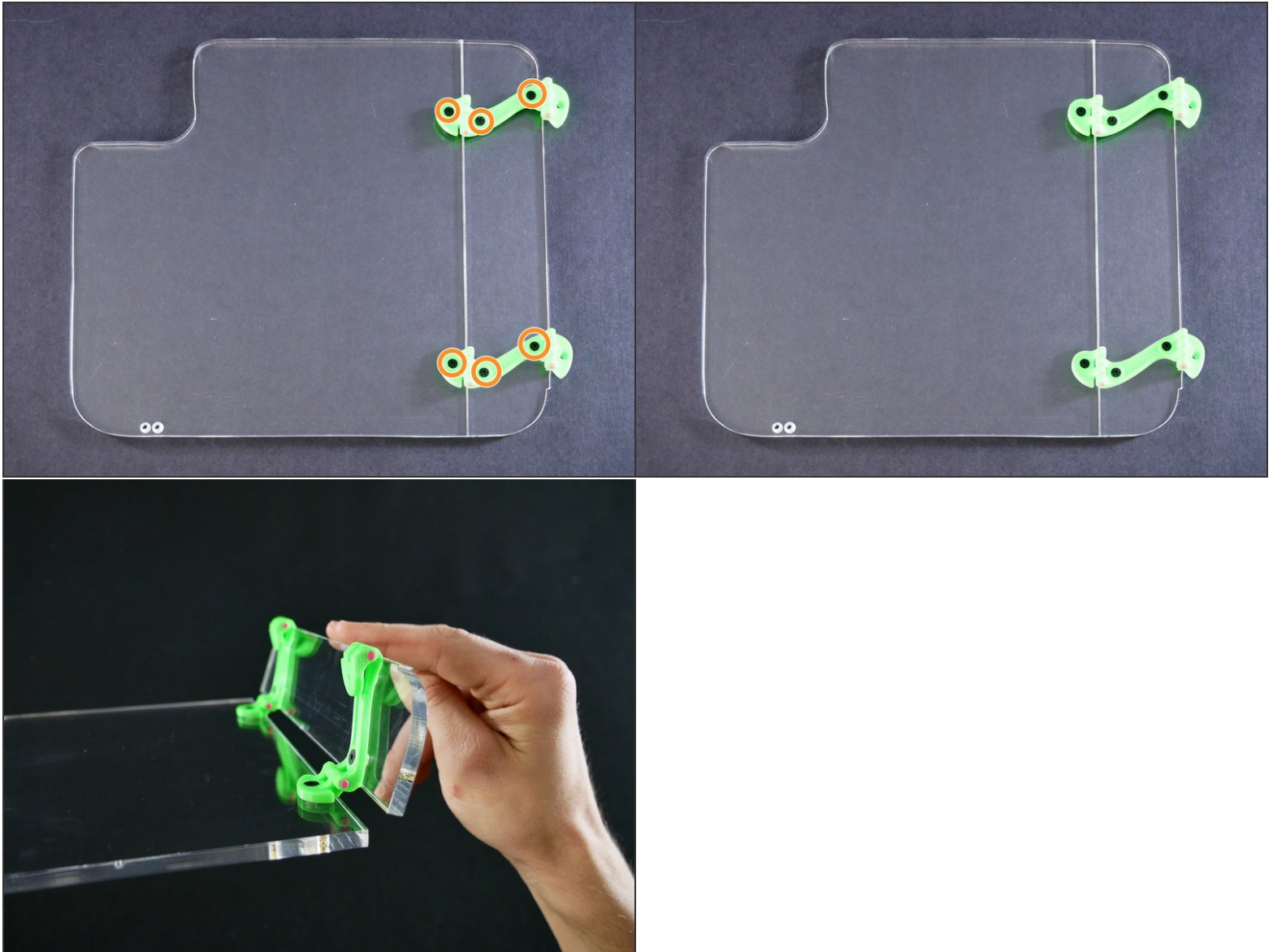
Step 3



Step 4



## Step 5

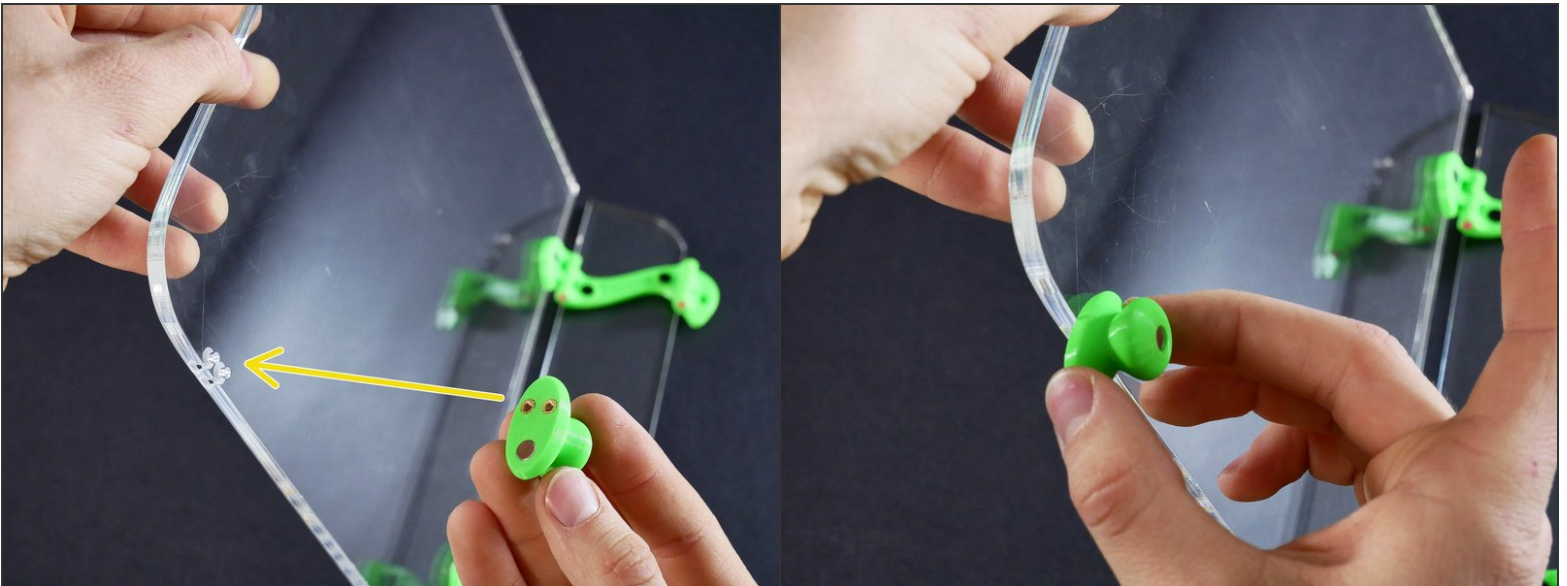


- M3x8 flat head

## Step 6

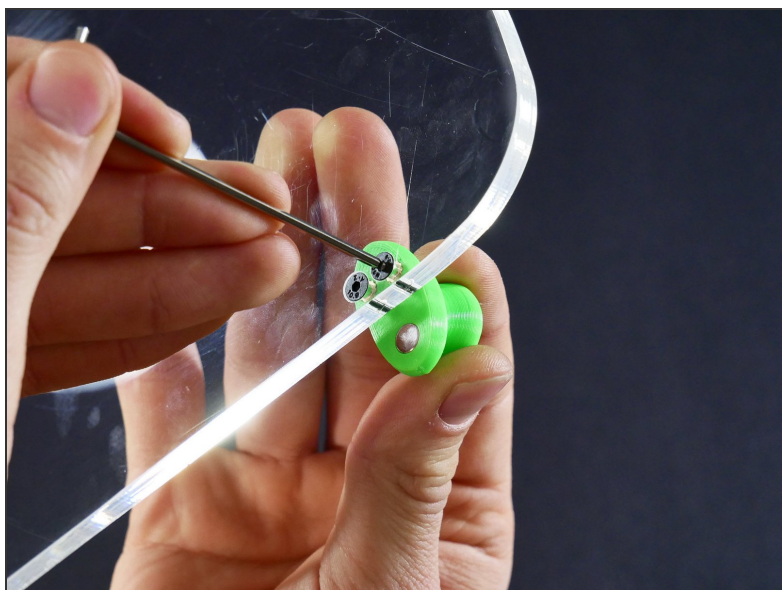


## Step 7



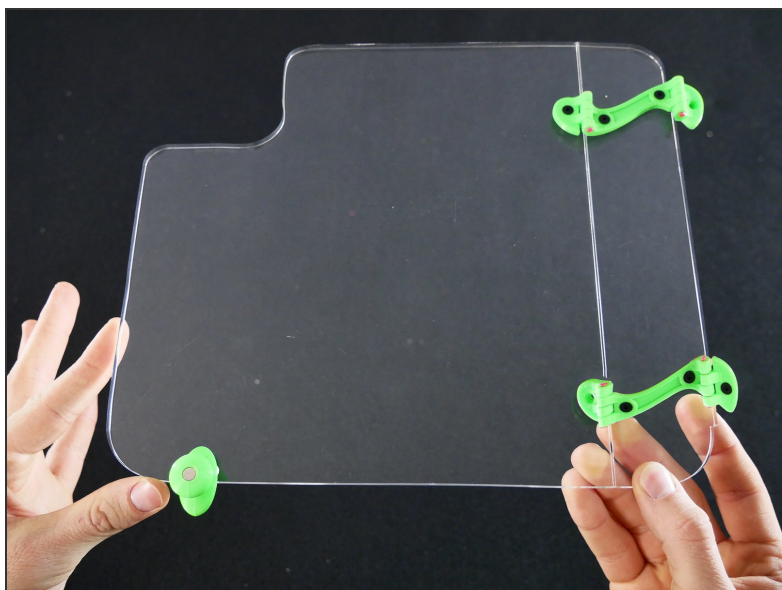


## Step 8

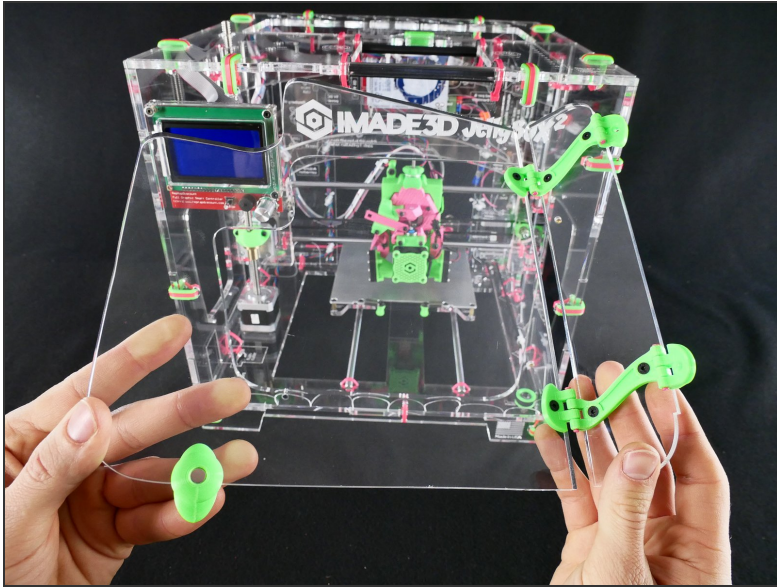


- M3x8 flat head

## Step 9

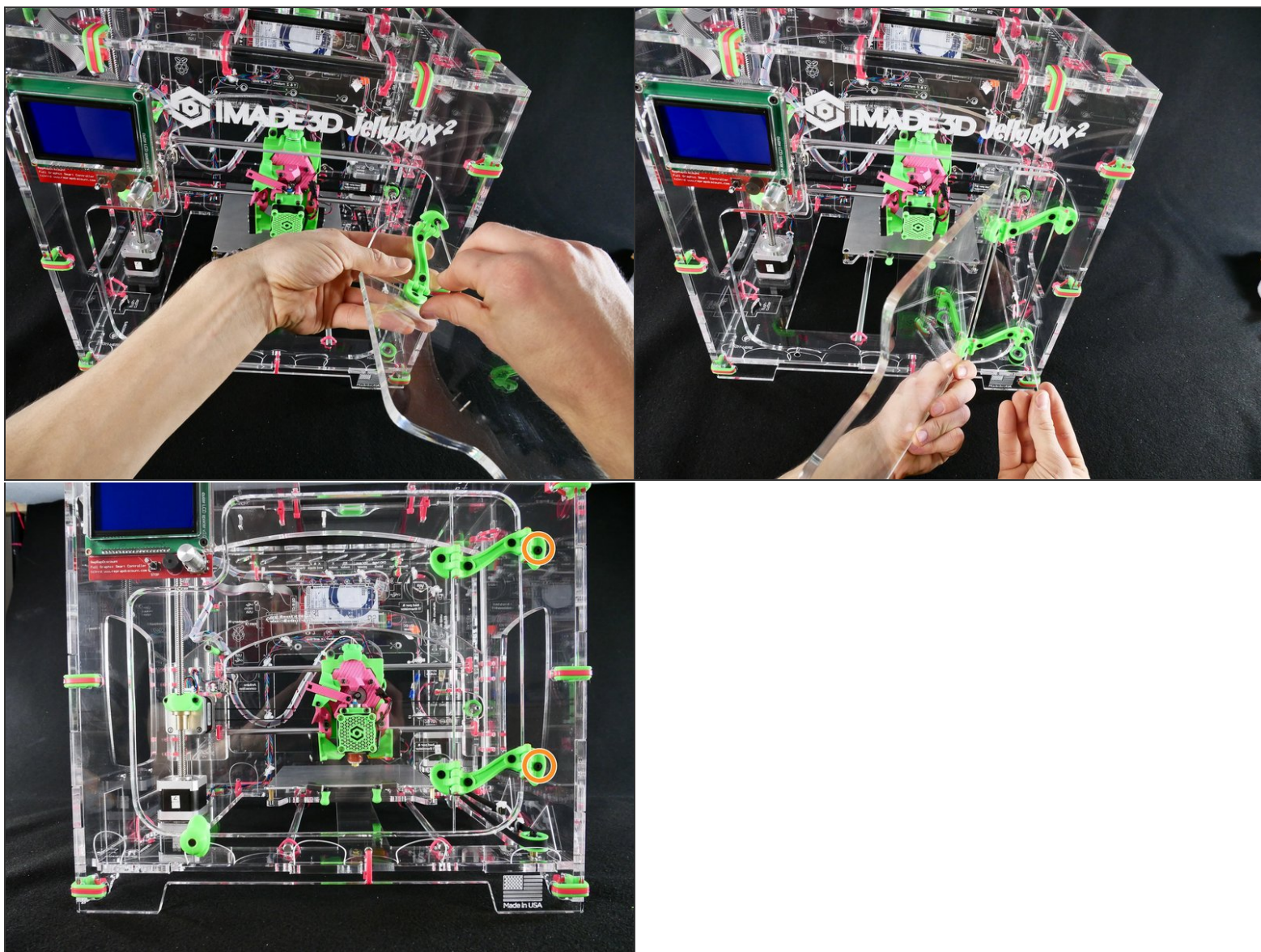


## Step 10 — ↪ Install the Front Door



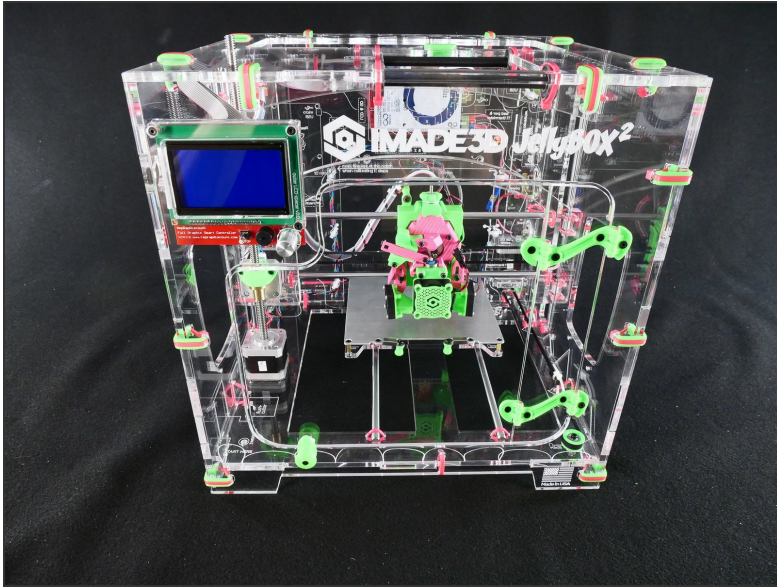


## Step 11



- M3x8 flat head

## Step 12



## What's Next?

Get back to the [← Easy Kit Build Flow](#) and continue with the next guide.