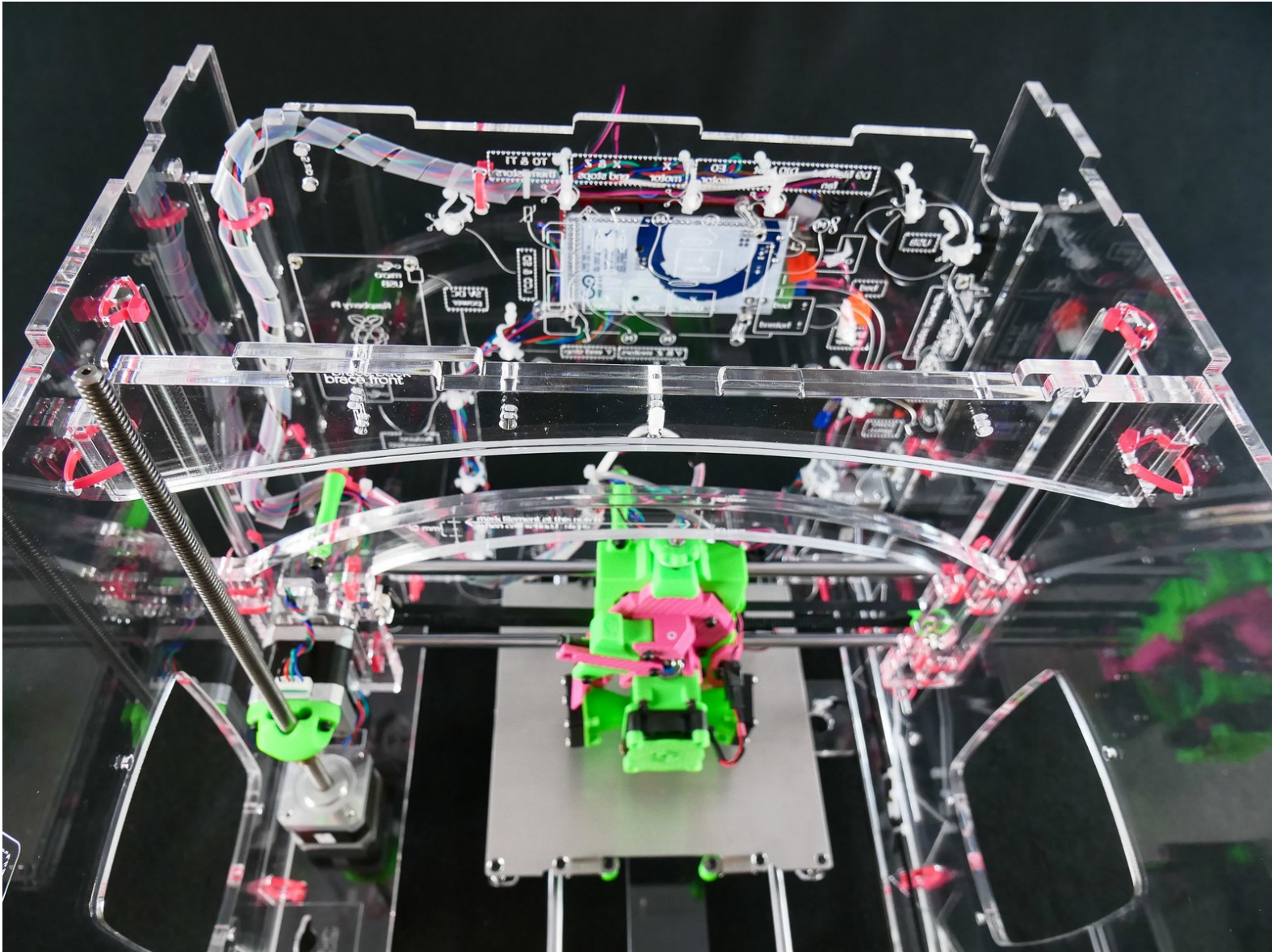




Brace

Brace

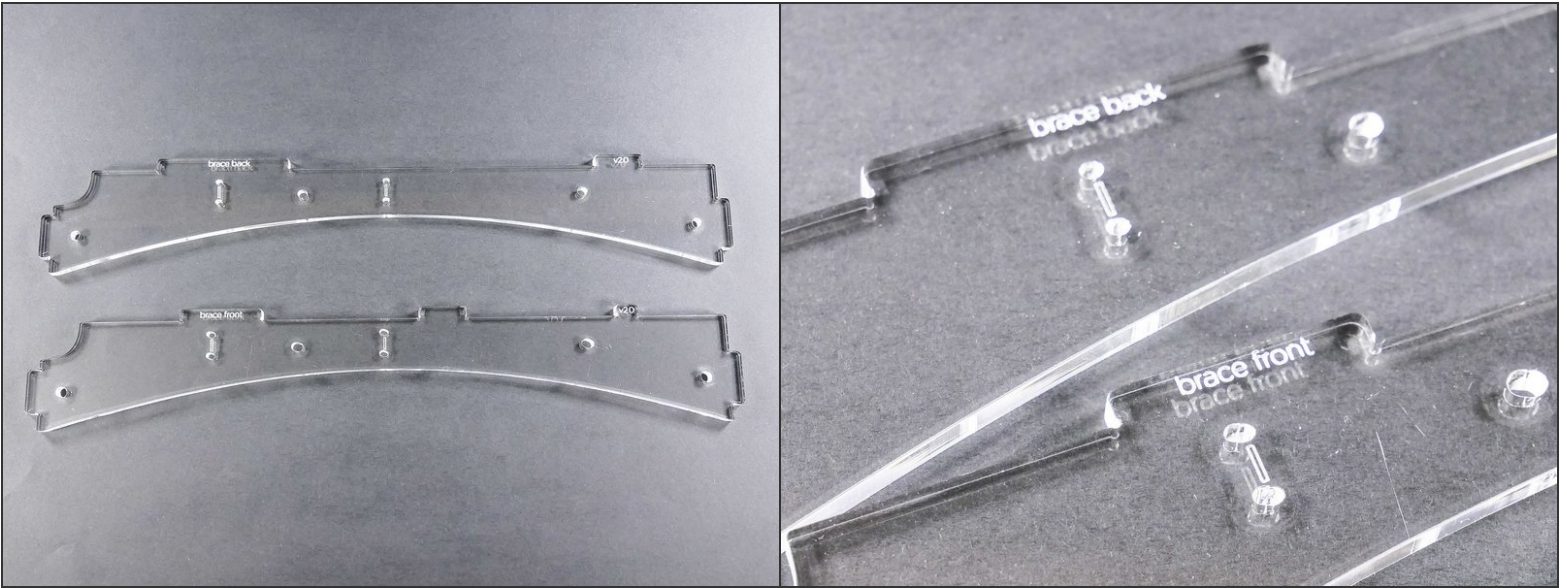


INTRODUCTION

Not the guide you are looking for?

Go back to the [← Easy Kit Build Flow.](#)

Step 1 — ↳ Prepare the Brace



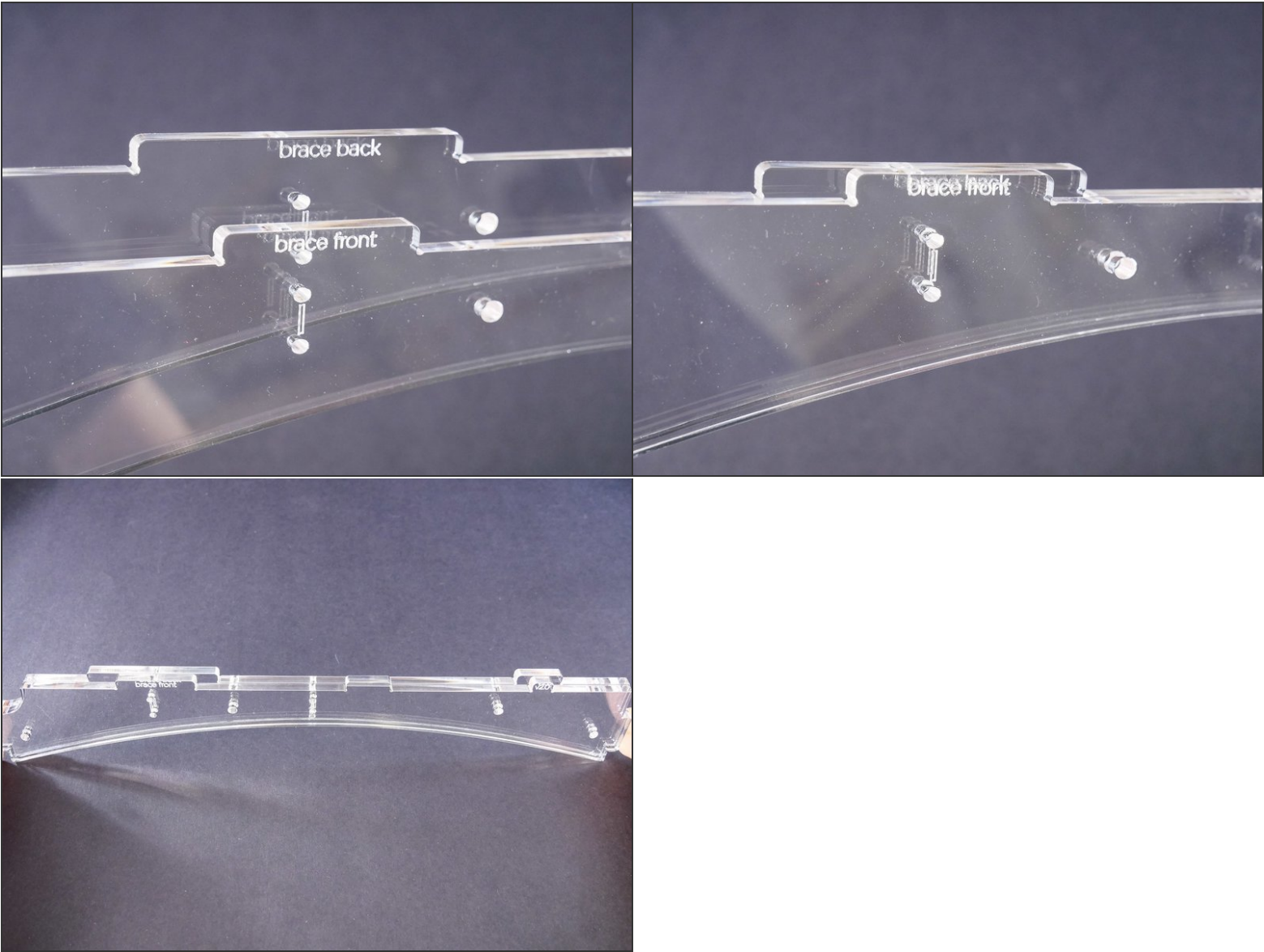
- Insert wisdom here.

Step 2

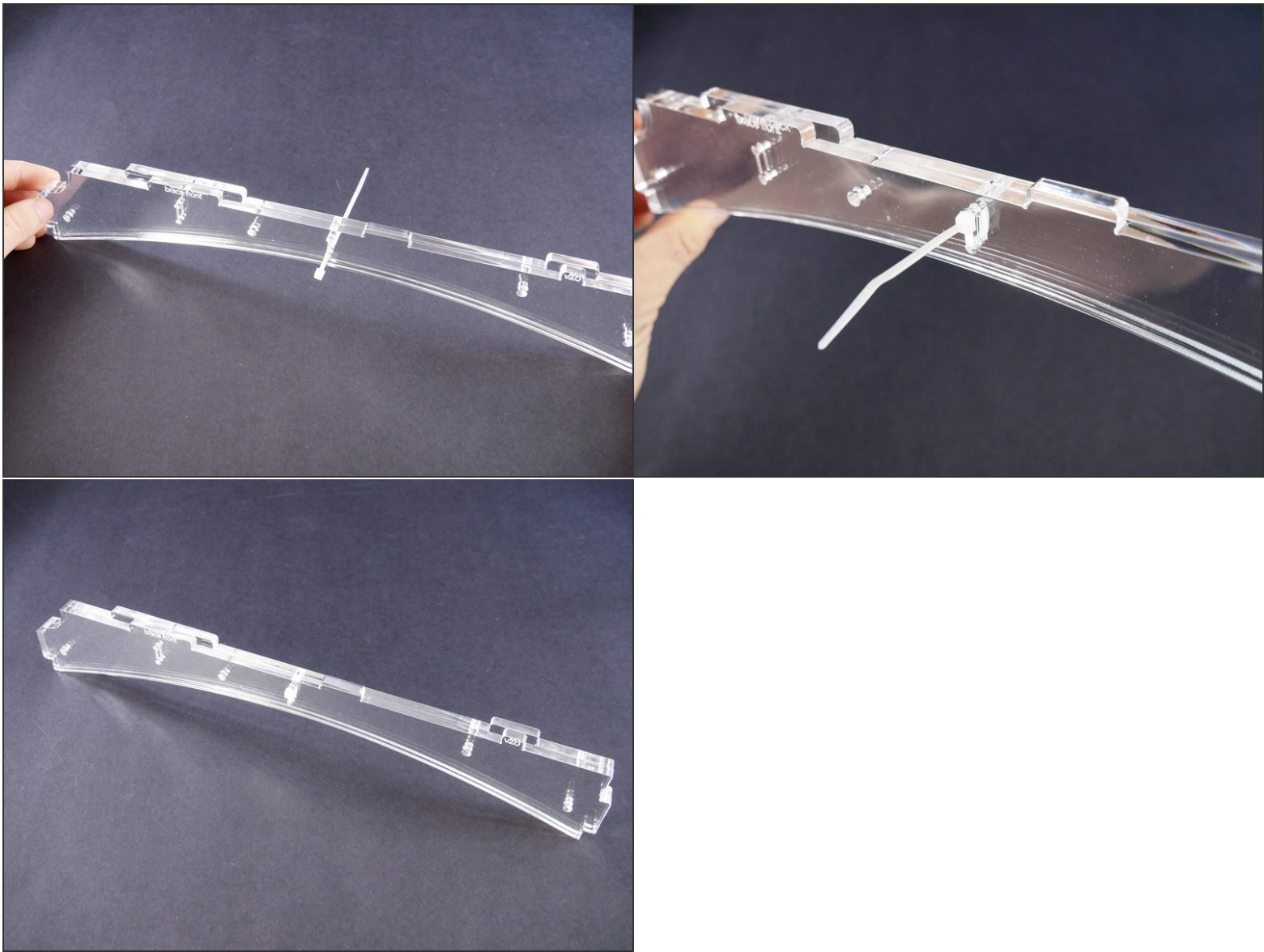


- ☑ Any dirt and fingerprints trapped between the acrylic parts will be impossible to clean later!

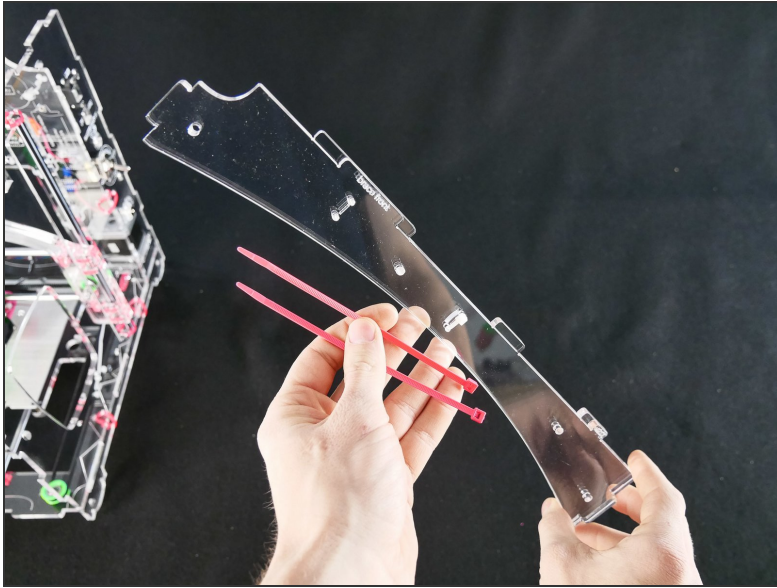
Step 3



Step 4



Step 5 — ↳ Install the Brace

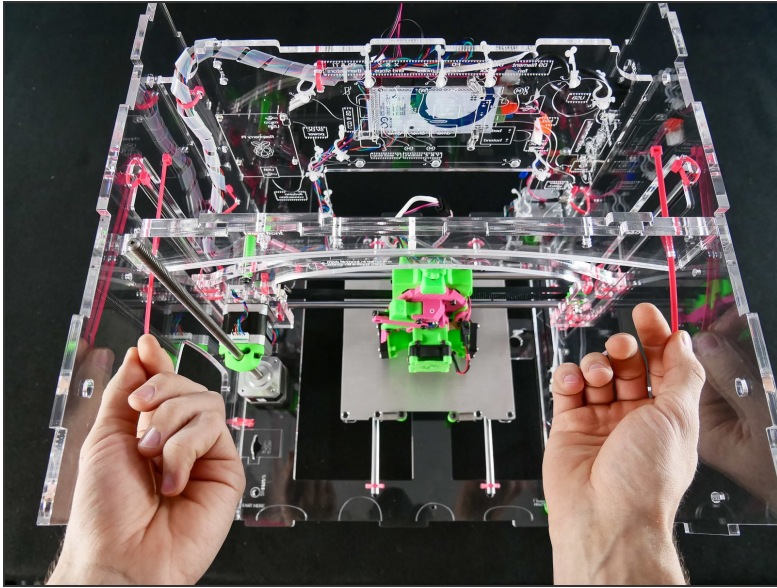


Step 6

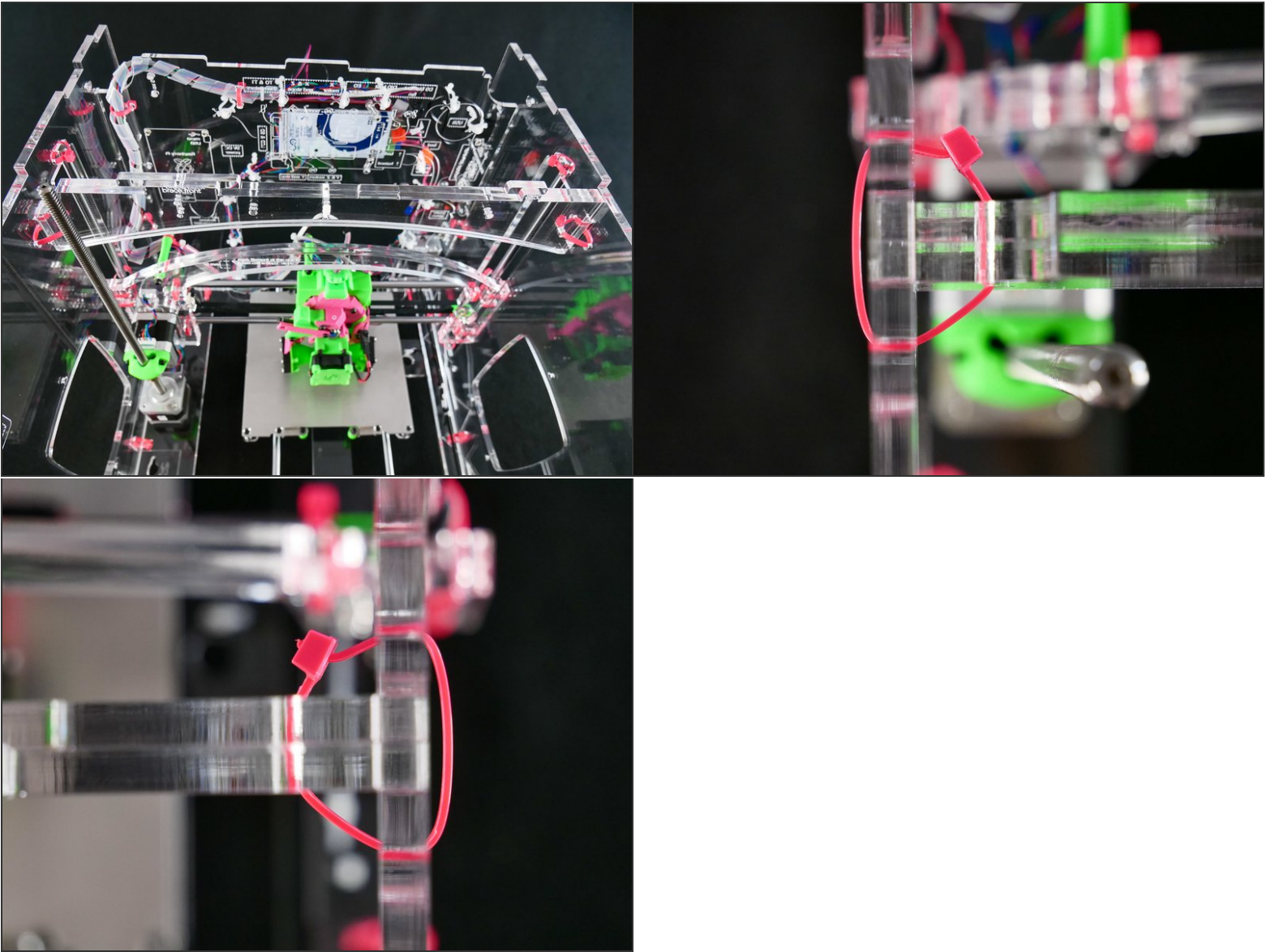


- Gently flex the frame to insert the brace.

Step 7



Step 8



What's Next?

Get back to the [← Easy Kit Build Flow](#) and continue with the next guide.