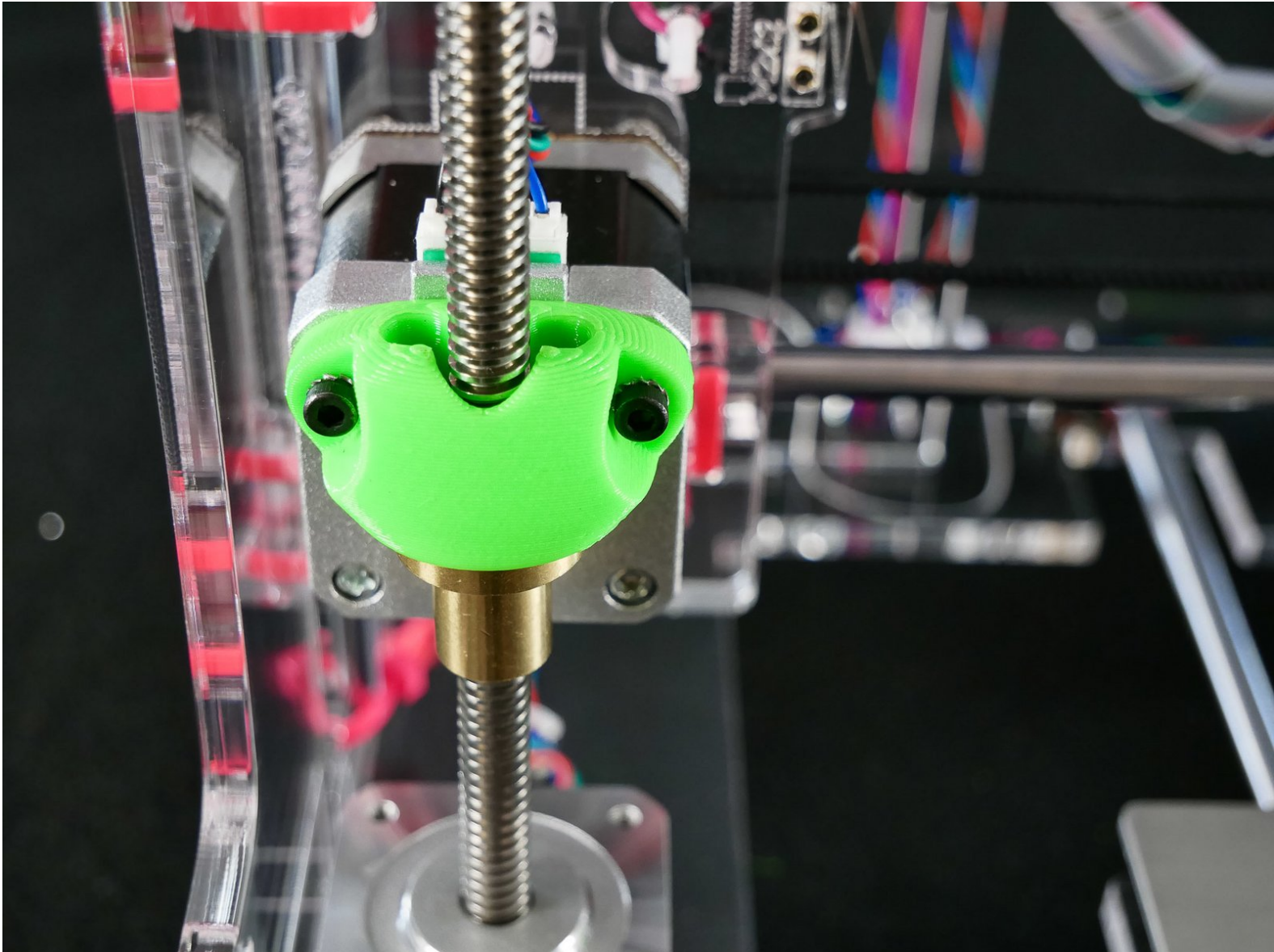




Connect the Z and X Axes

Connect the Z and X Axes



INTRODUCTION

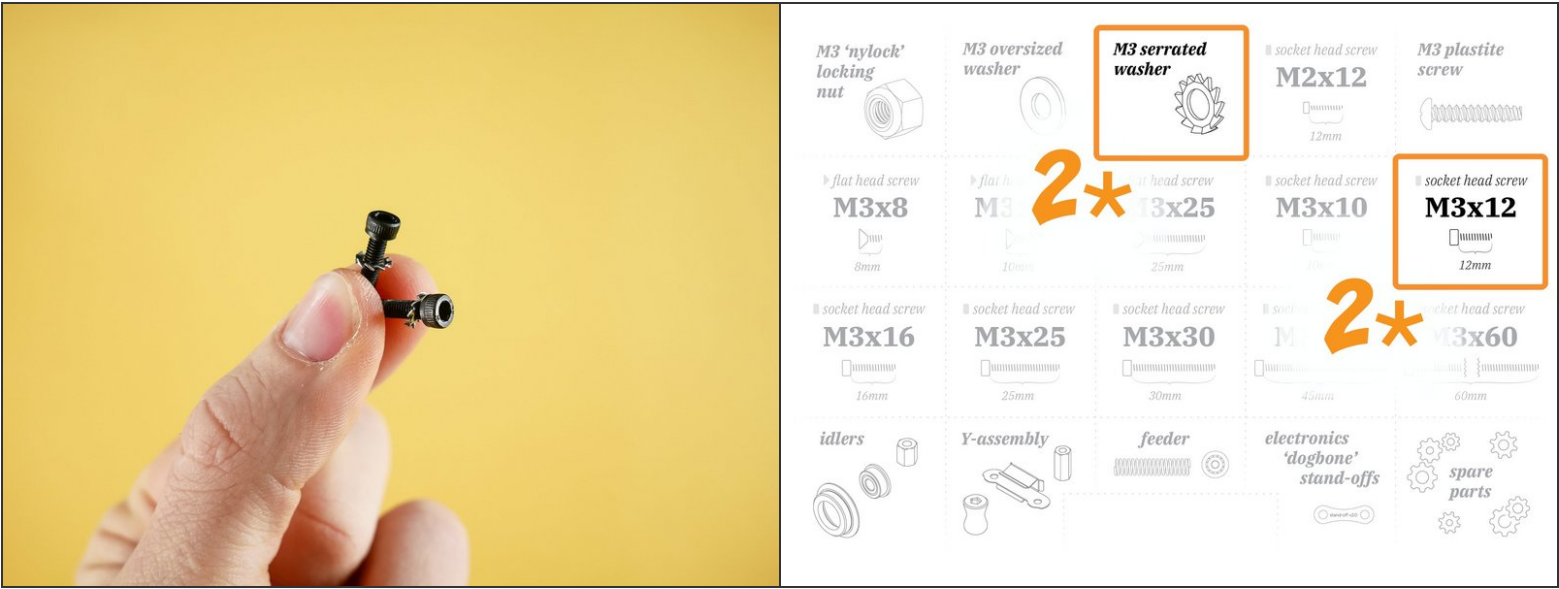
Not the guide you are looking for?

Go back to the [← Easy Kit Build Flow.](#)

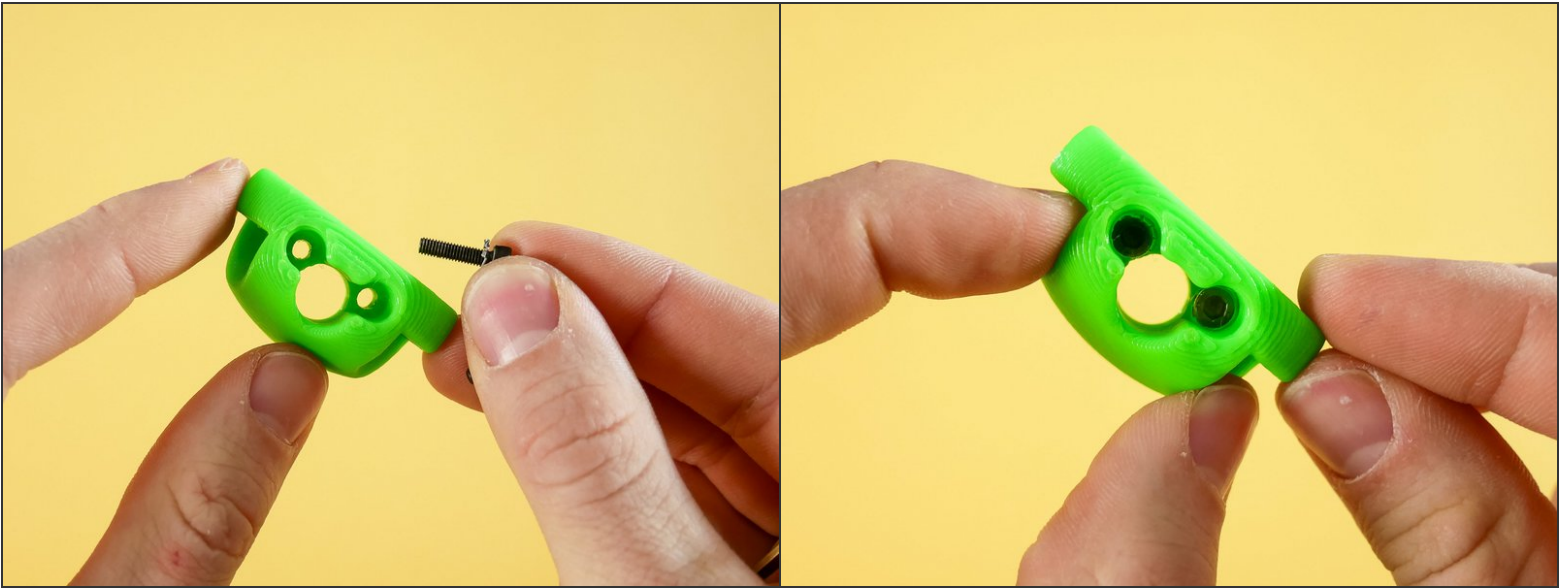
Step 1 — ↪ Prep the ZX Coupler



Step 2

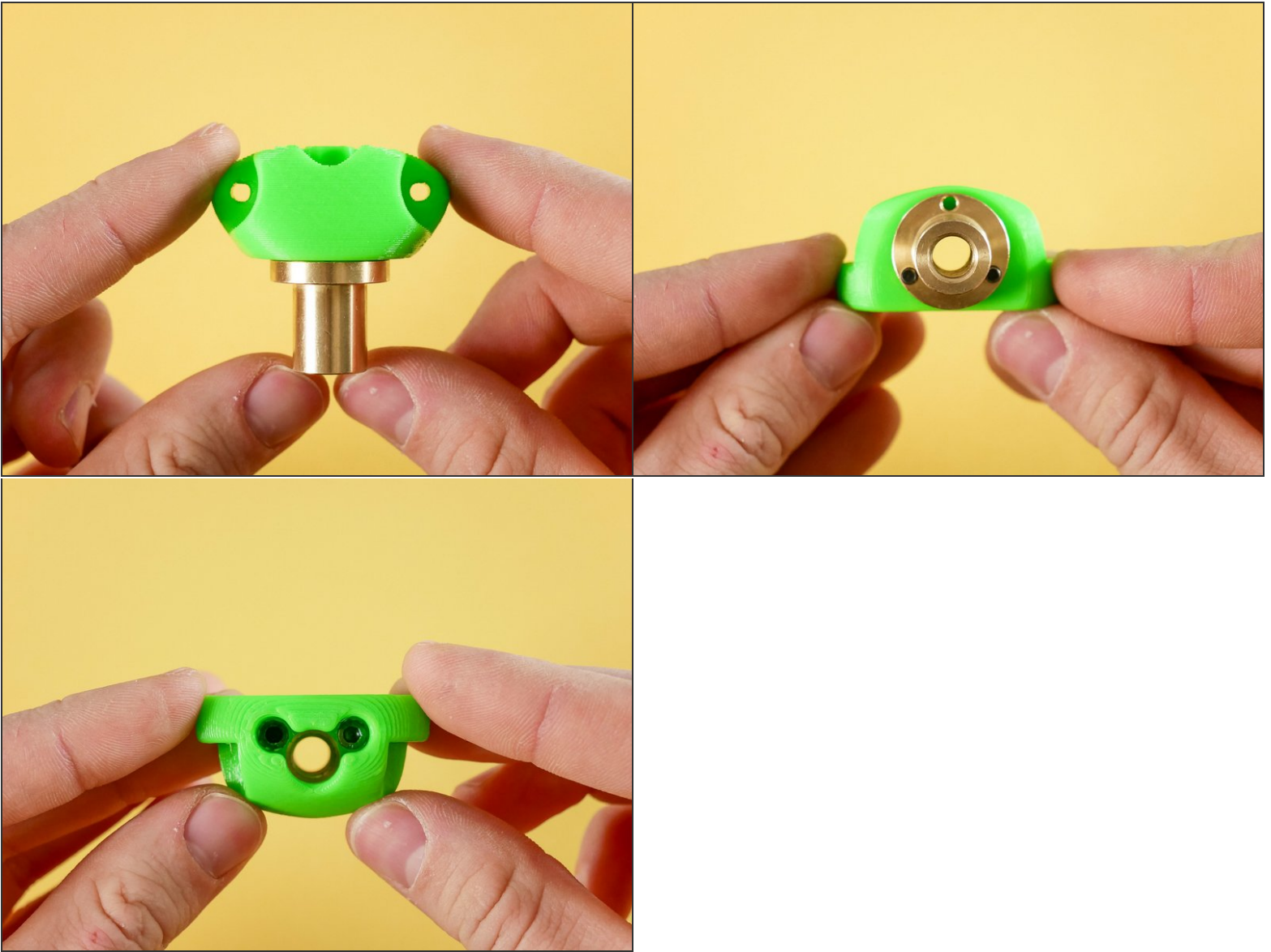


Step 3



Step 4



Step 5

Step 6 — ↪ Install the ZX Coupler

M3 'nylock' locking nut

M3 oversized washer

M3 serrated washer

socket head screw M2x12

M3 plastite screw

flat head screw M3x8

flat head screw M3x10

flat head screw M3x25

socket head screw M3x10

socket head screw M3x12

socket head screw M3x16

socket head screw M3x25

socket head screw M3x30

socket head screw M3x45

socket head screw M3x60

idlers

Y-assembly

electronics 'dogbone' stand-offs

spare parts

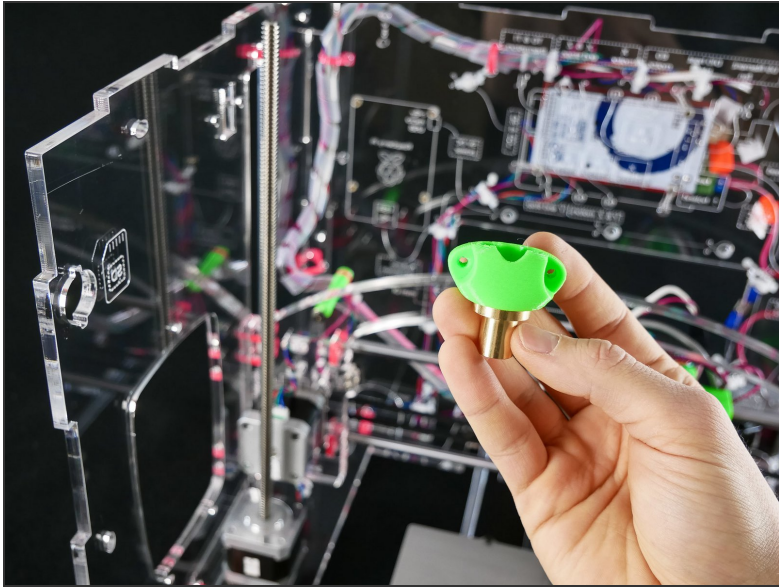
2*

2*

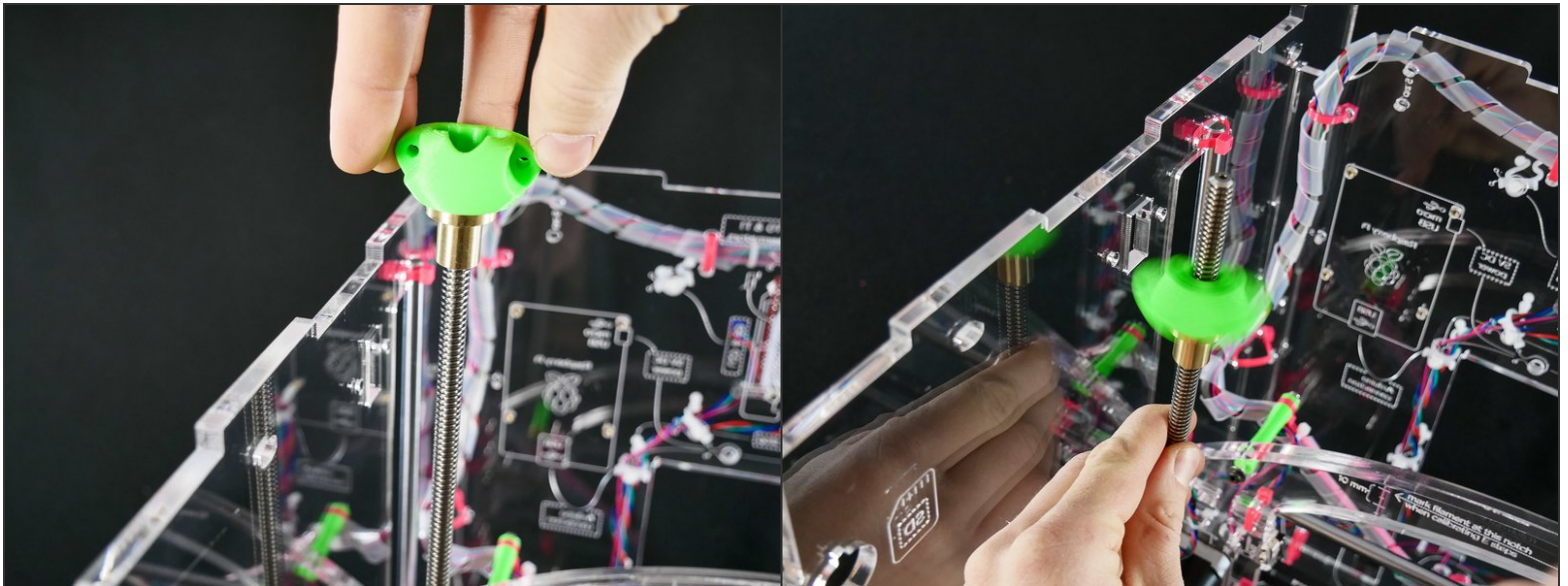
Step 7



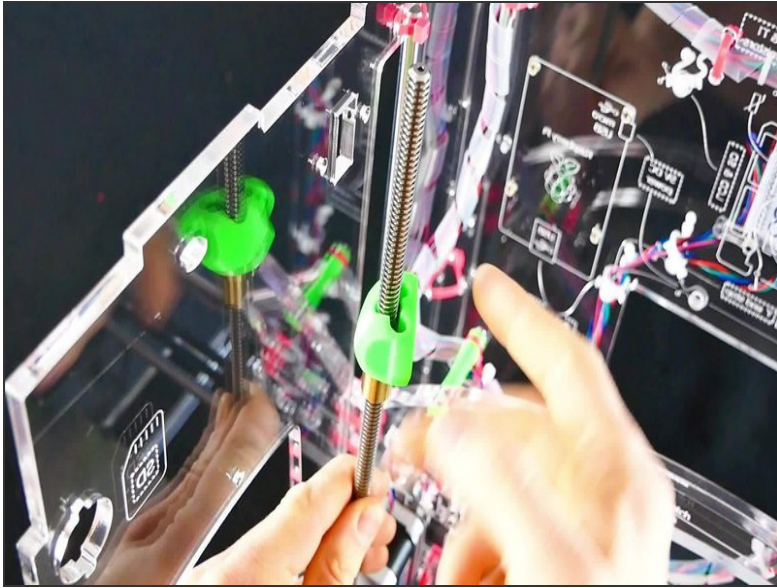
Step 8



Step 9

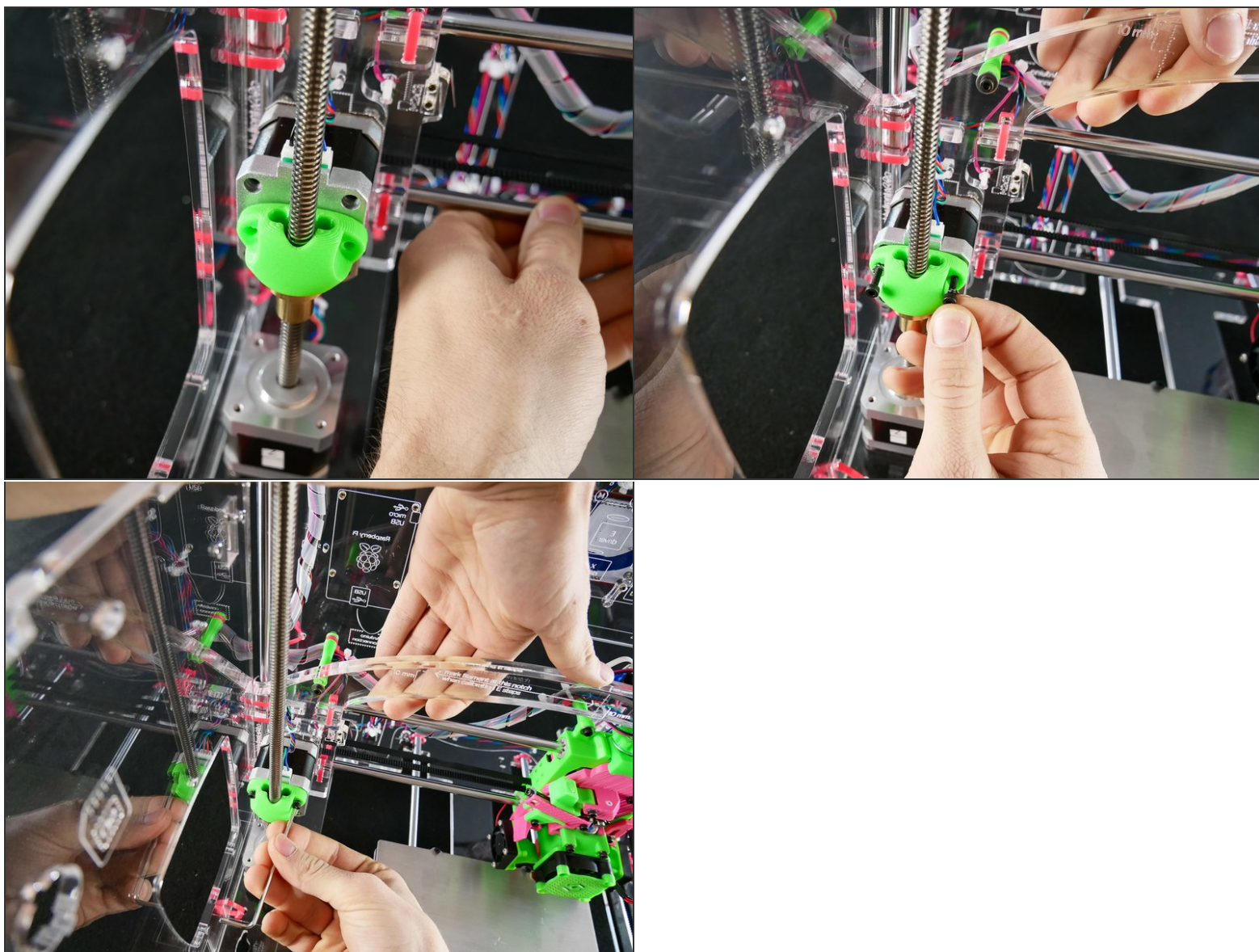


Step 10



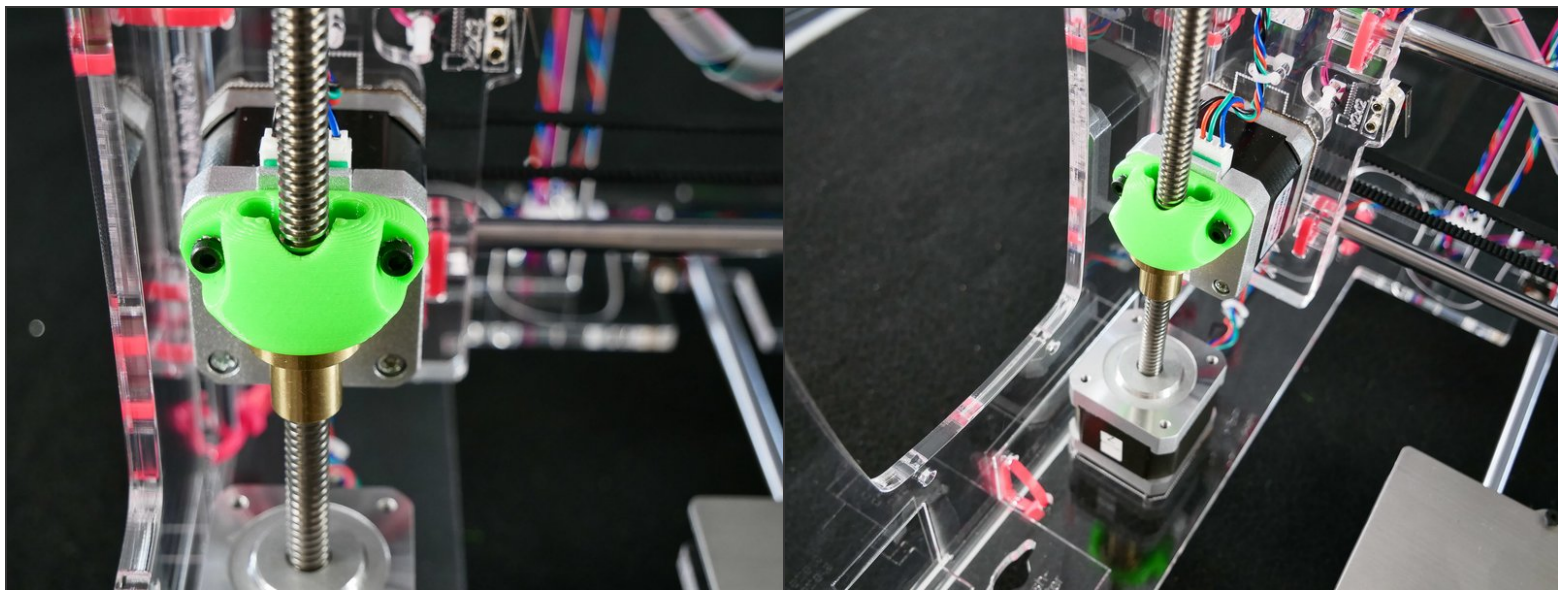
- ▶ Video: Coupler Spin (2s)

Step 11

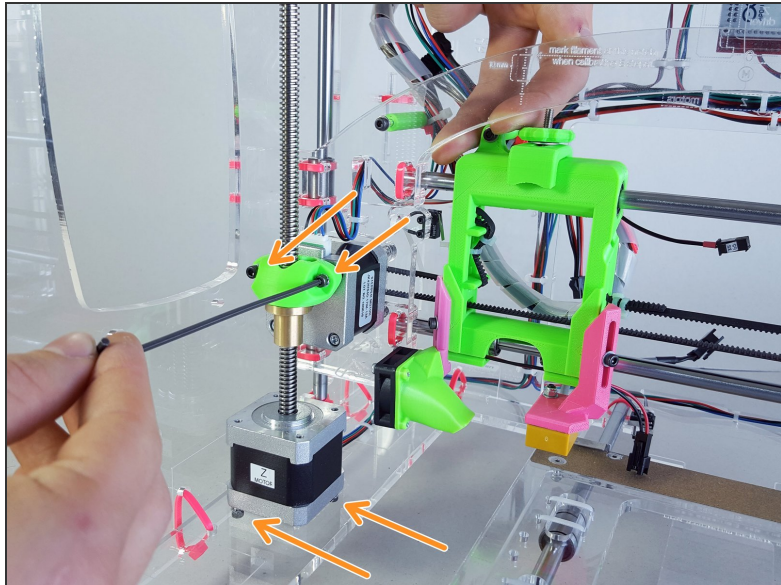


- ☑ Hold the X assembly up with one of your hands so that the holes are well aligned.
 - Otherwise, the misalignment caused by gravity will make it difficult to screw in the screws.

Step 12 — Looking good!

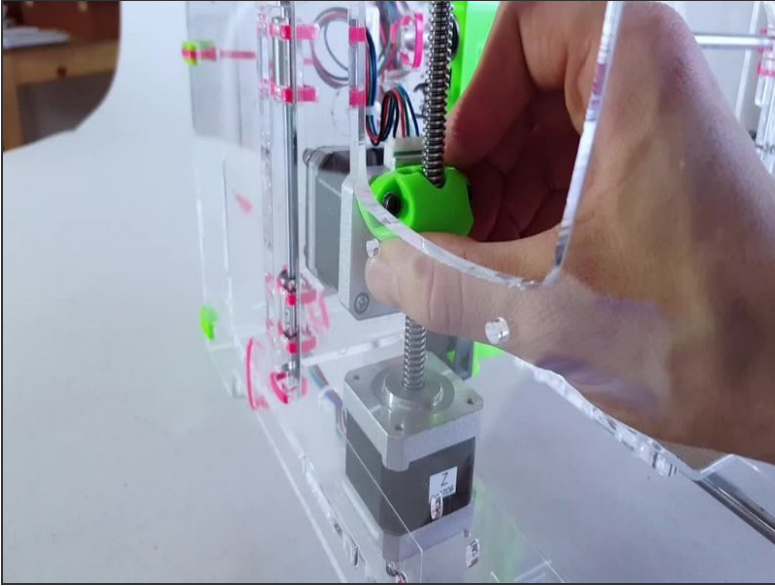


Step 13 — ↵ (Self-)Align the Z Motor



- Make sure the ZX coupler and Z motor screws are **LOOSE**

Step 14 — ► Video: (Self-)Align the Z Motor



- Put the printer on the edge of a table to expose the Z motor screws.
- Rotate the Z lead screw by hand to find the Z motor position in which the movement is the smoothest.
- Moderately tighten X screws.
- Only lightly tighten Z screws. Tight is bad!

What's Next?

Get back to the [← Easy Kit Build Flow](#) and continue with the next guide.