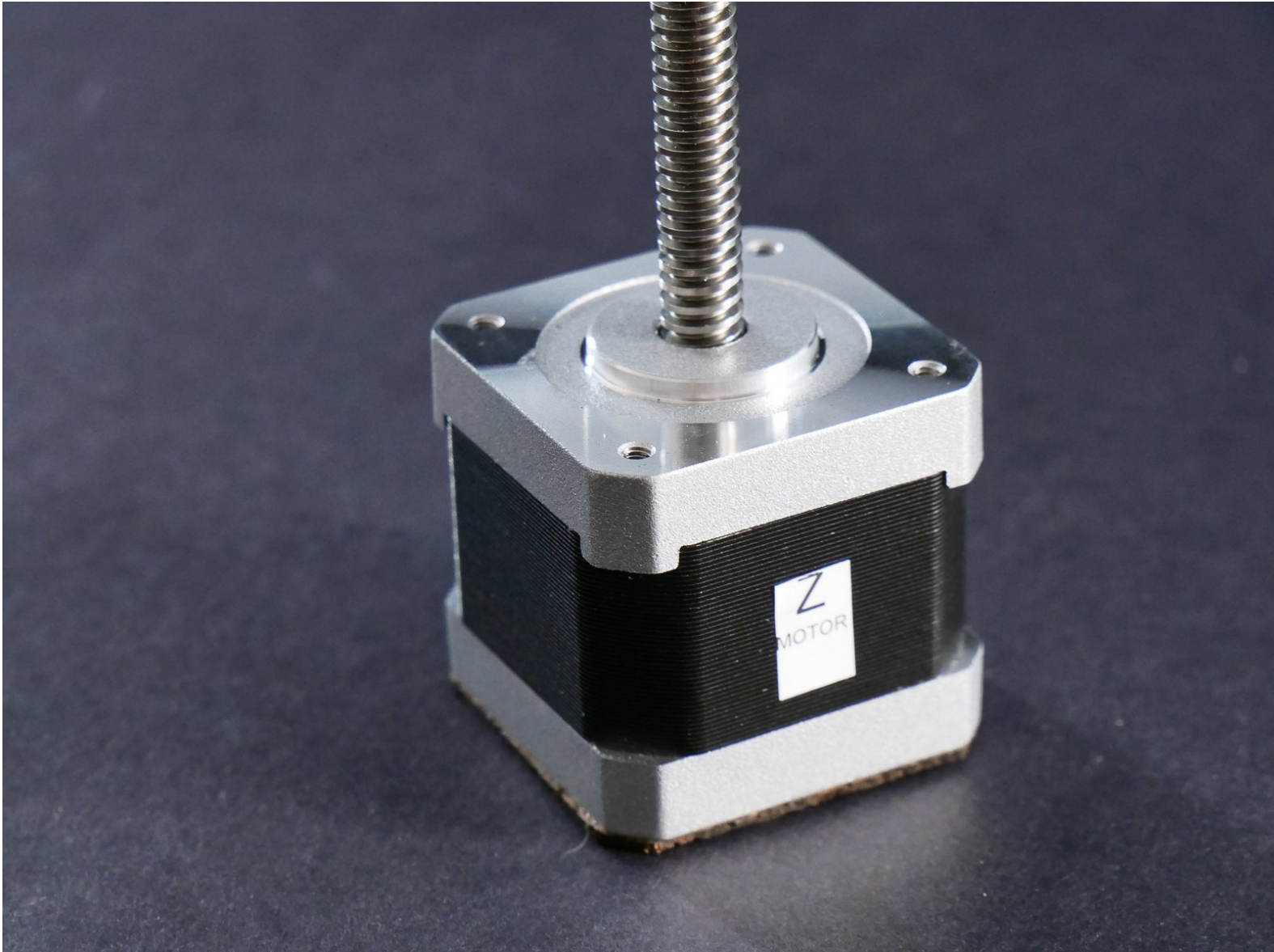




# Install the Z Motor

Install the Z Motor



# INTRODUCTION

Not the guide you are looking for?

Go back to the [← Easy Kit Build Flow.](#)

## Step 1 — Install the Z Motor

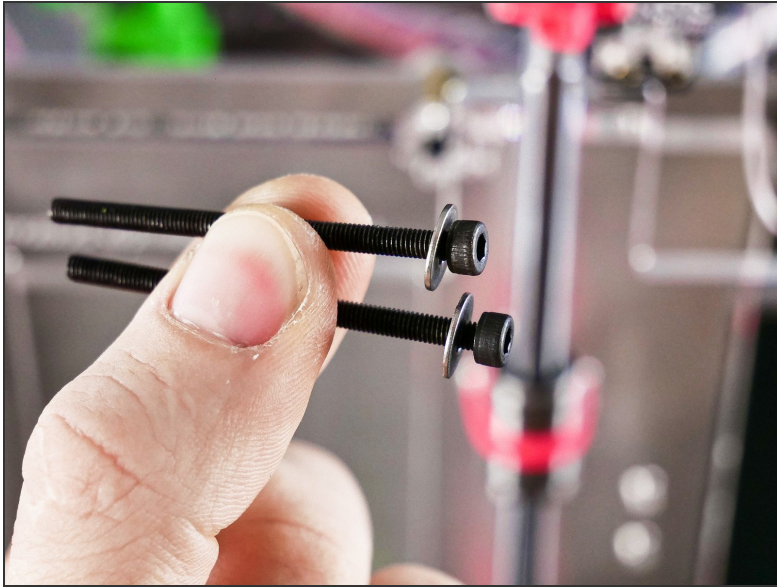


## Step 2

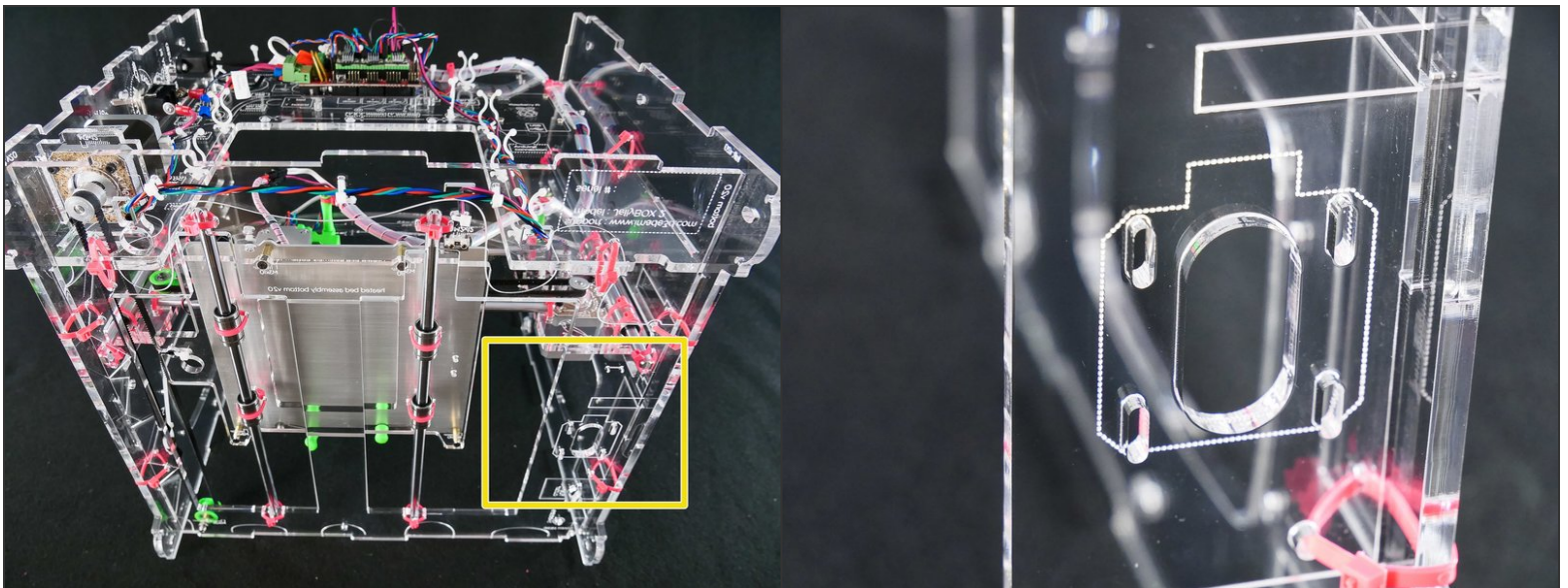


- M3x45

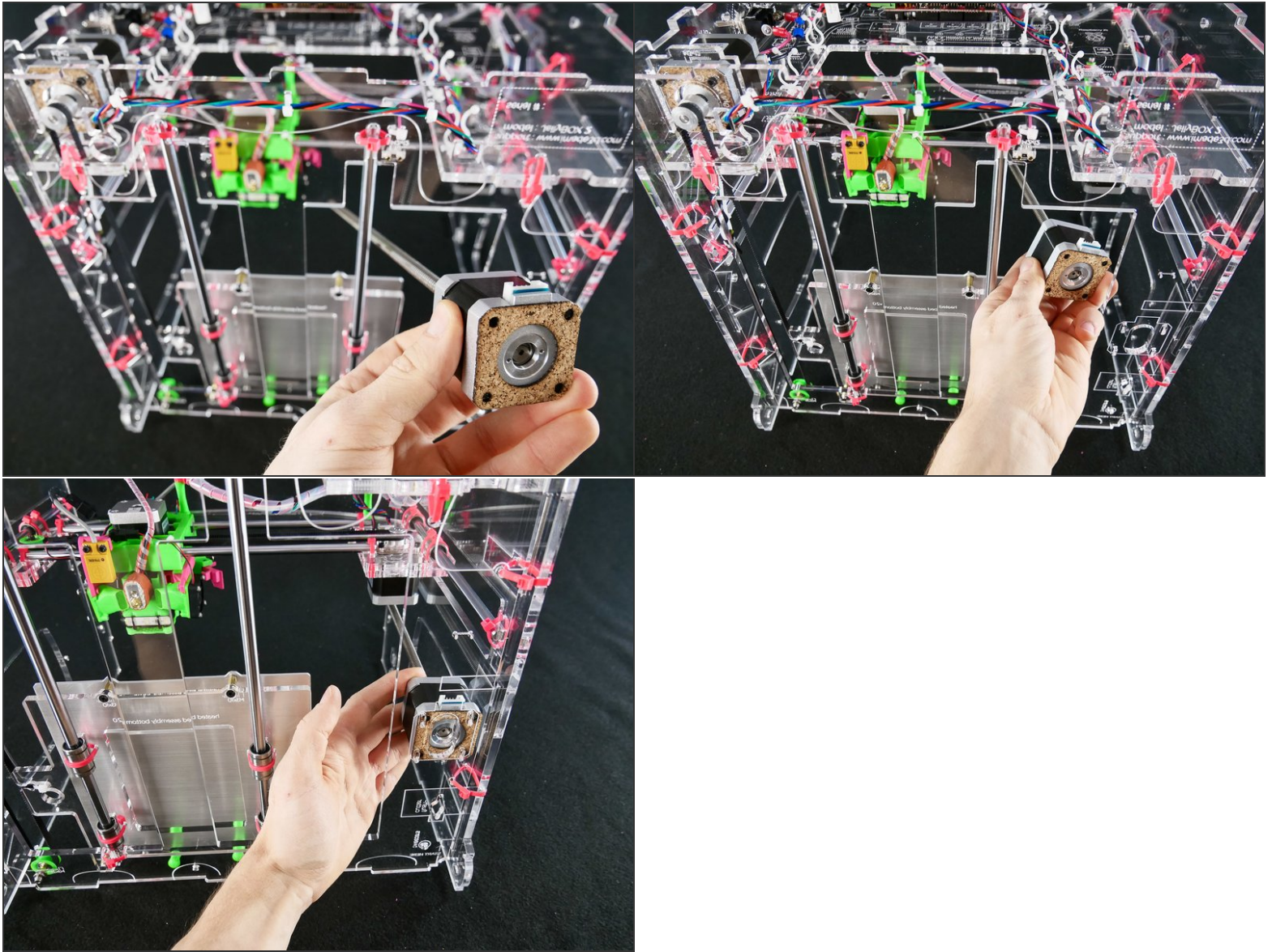
### Step 3



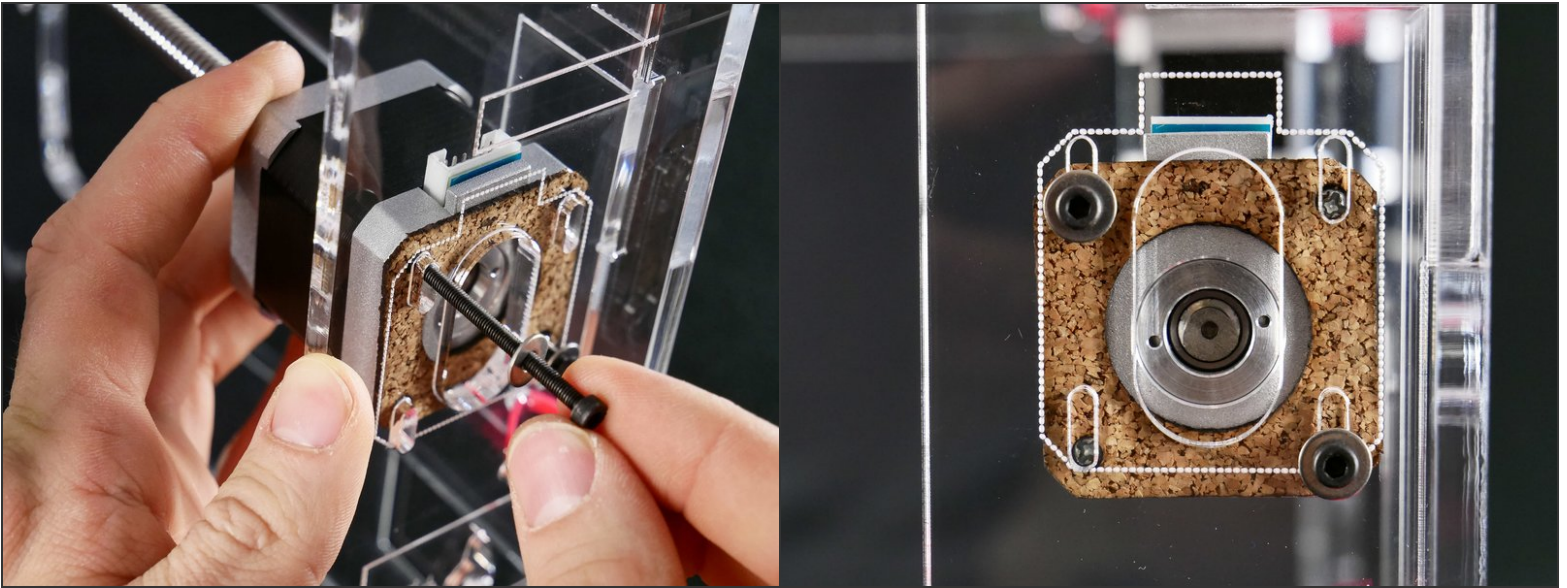
### Step 4



## Step 5

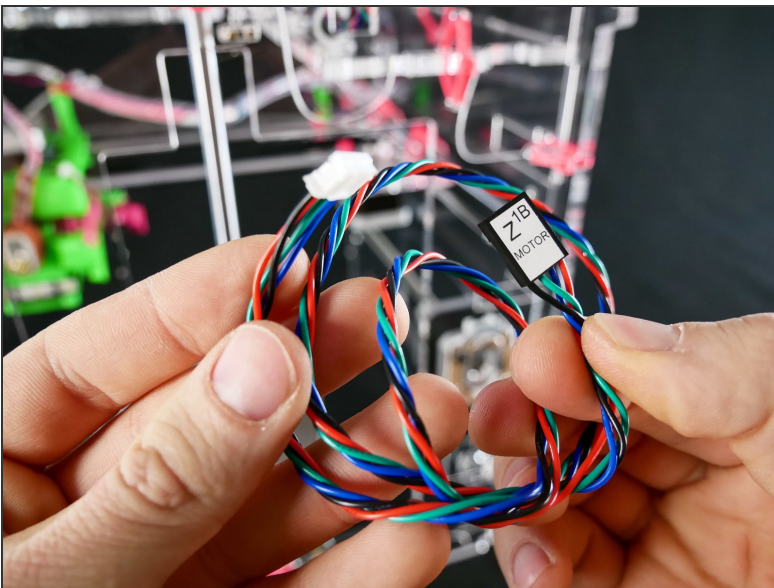


## Step 6

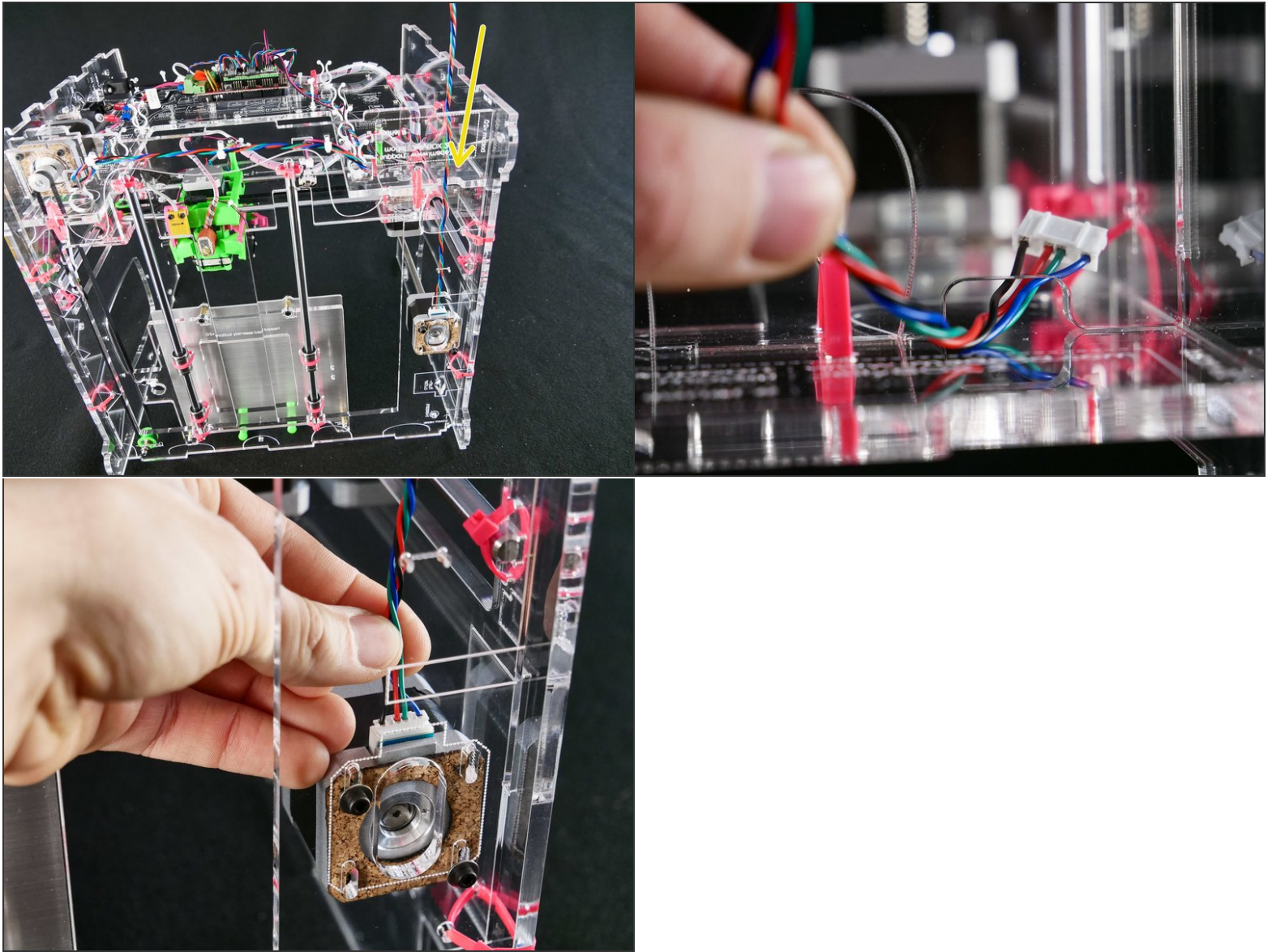


- Keep the screws a bit *loose*. We'll adjust the Z motor position later.

## Step 7

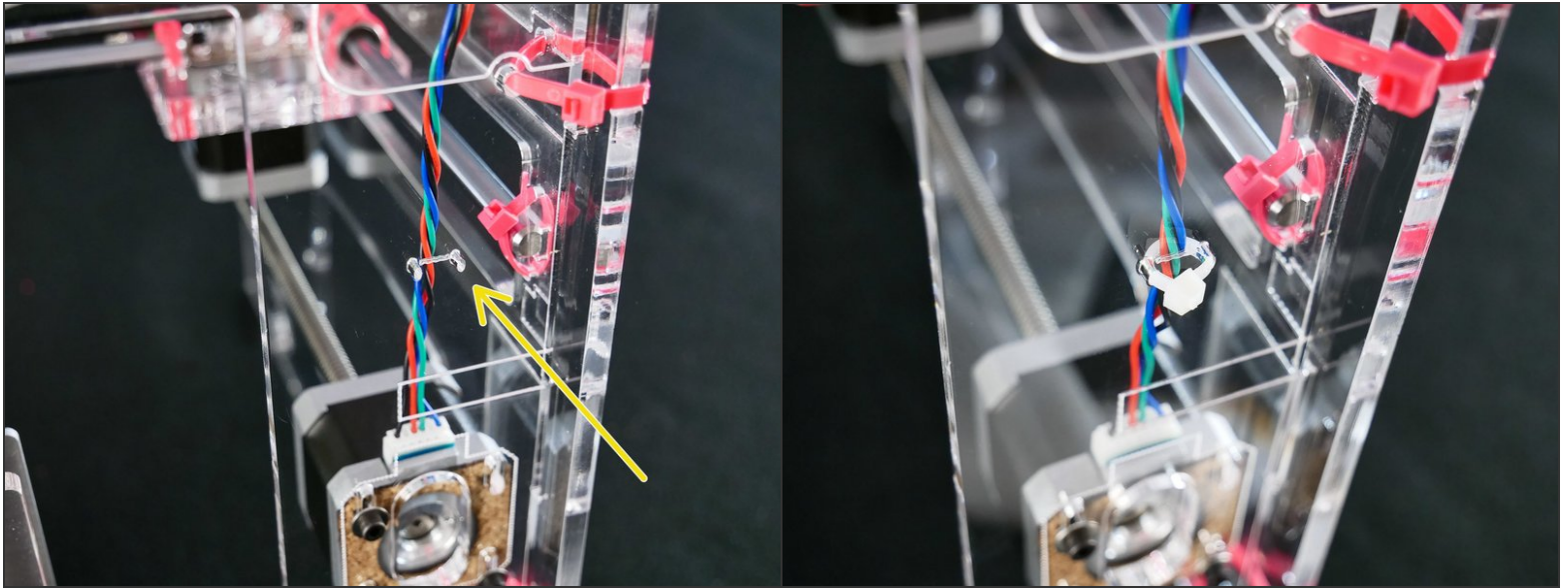


## Step 8

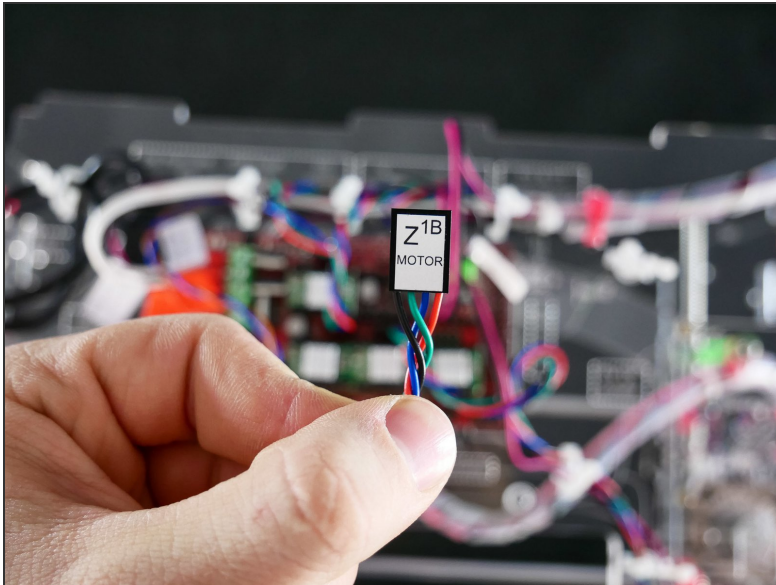


- [docs improvement] chose a better angle for photo #2

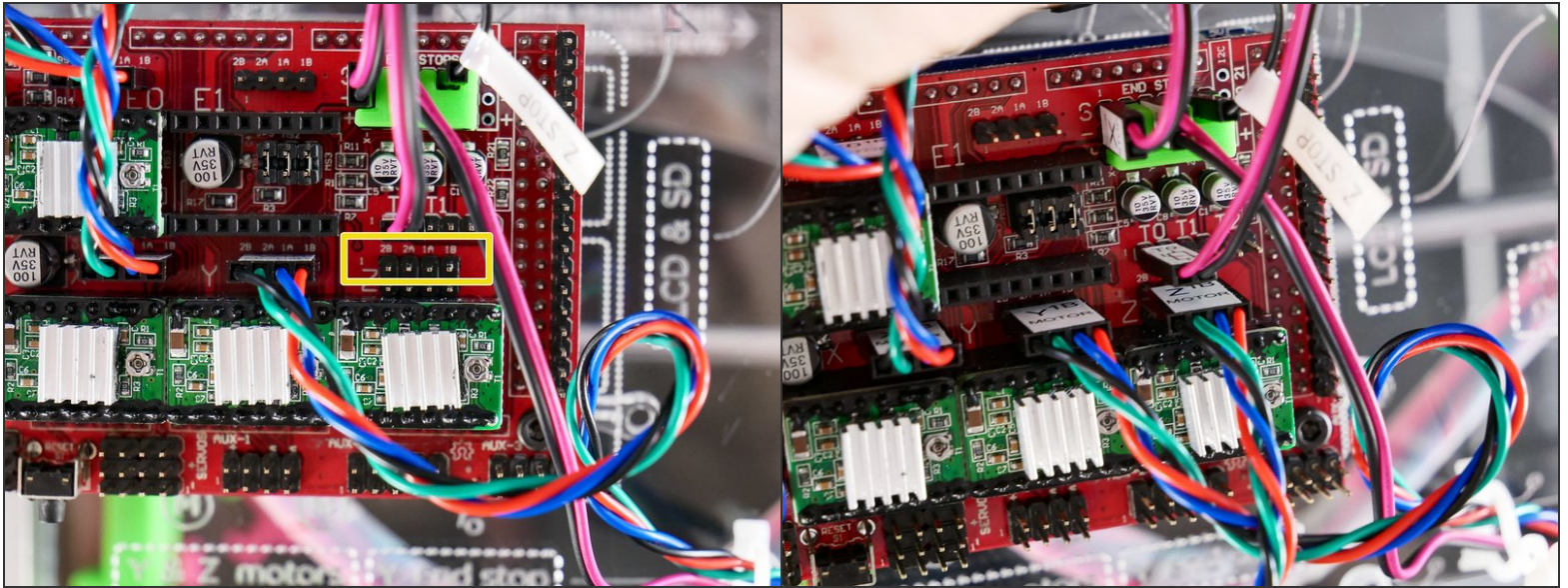
## Step 9



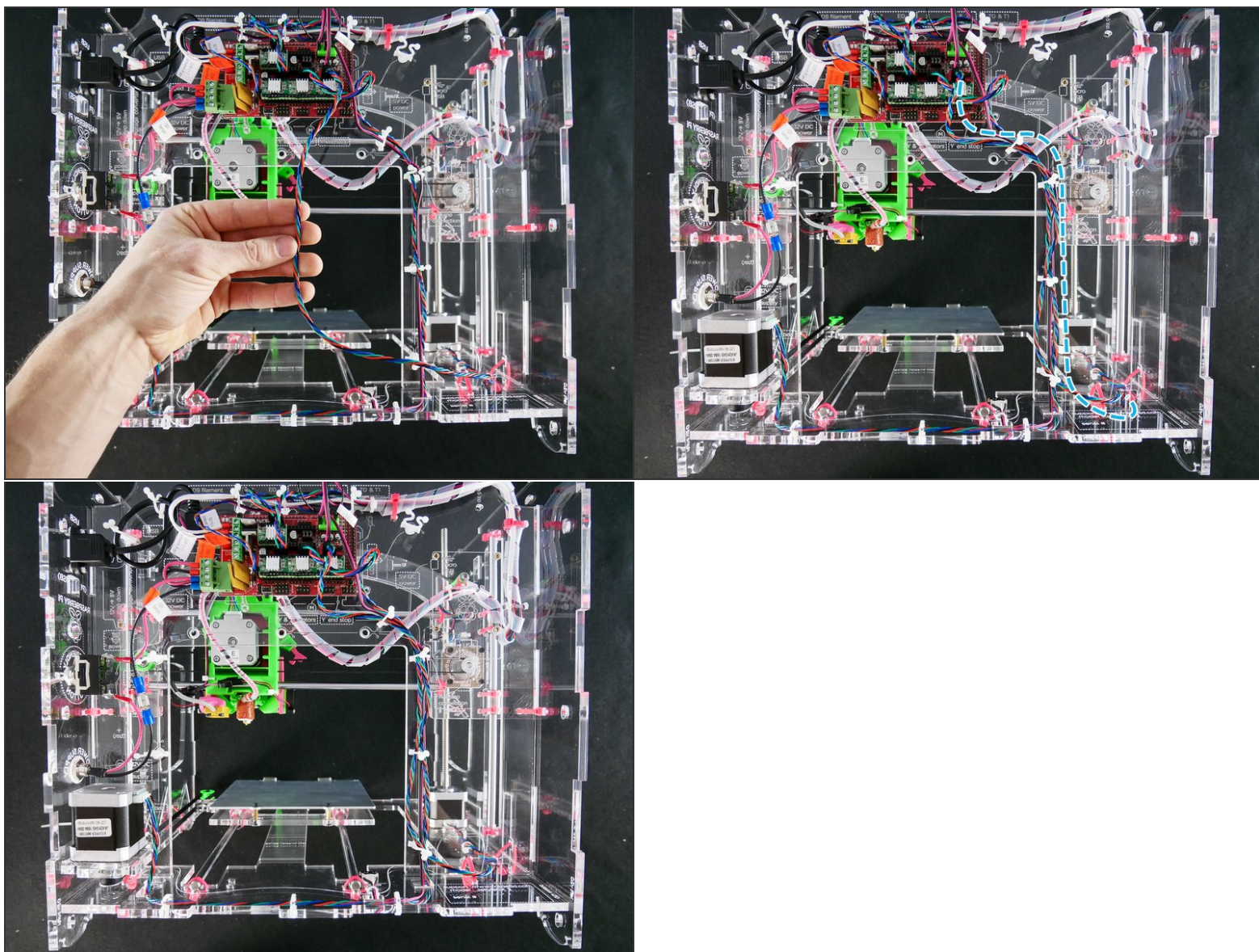
## Step 10



## Step 11



## Step 12 — It's done!



## What's Next?

Get back to the [← Easy Kit Build Flow](#) and continue with the next guide.