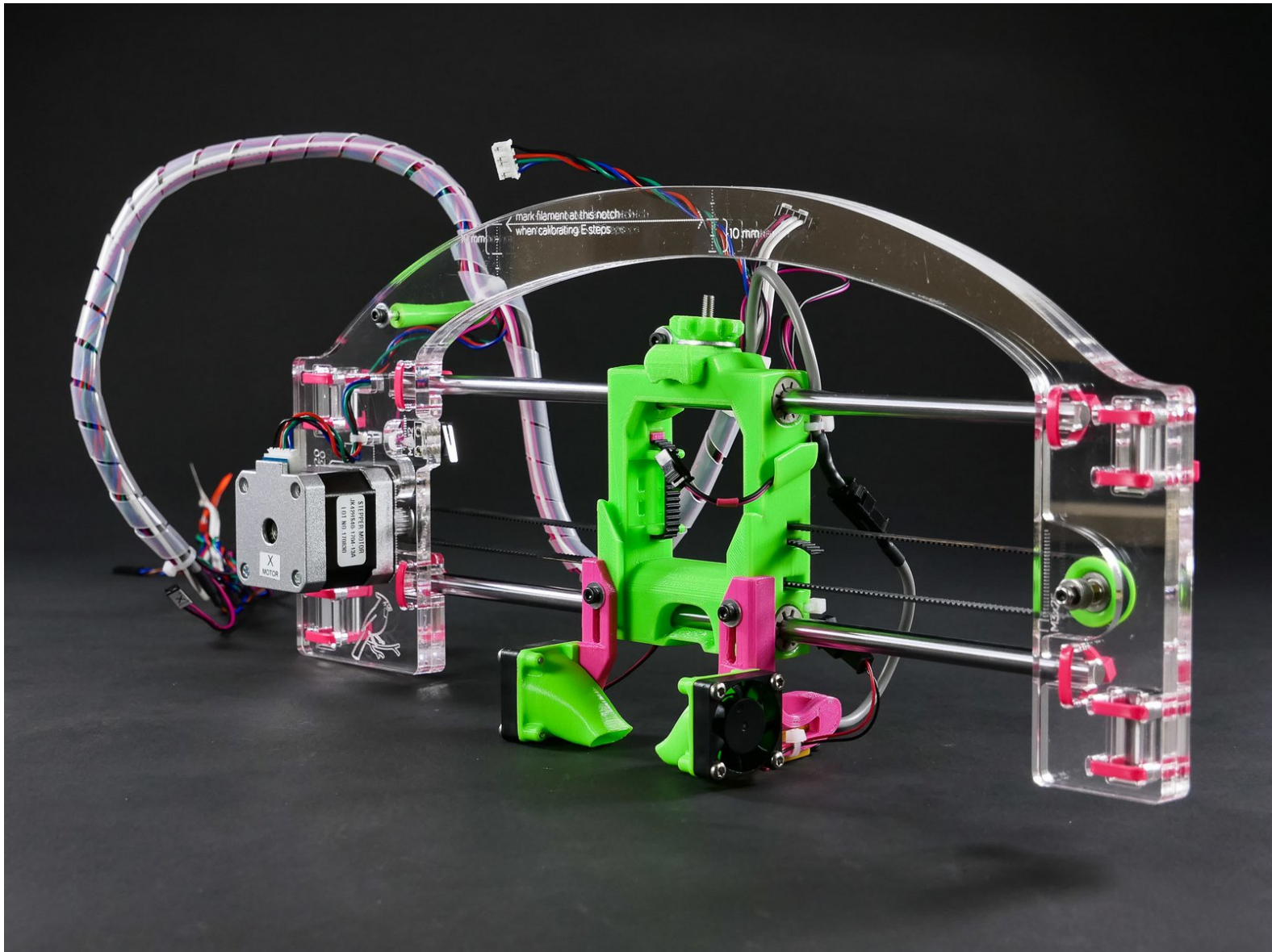




X Assembly Wire Harness

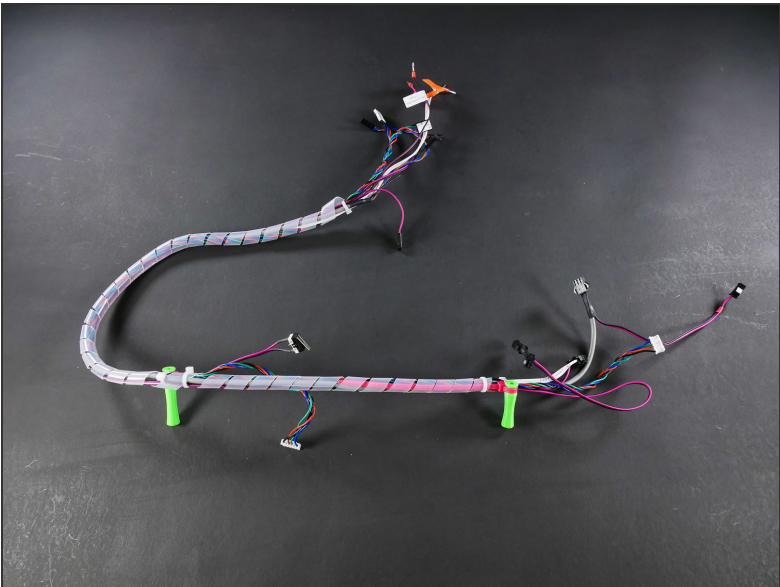


INTRODUCTION


Not the guide you are looking for?

Go back to the [← Easy Kit Build Flow.](#)


Step 1 — ↳ X Wire Harness




Step 2

M3 'nylock' locking nut



2*

M3 oversized washer



4*

socket head screw M2x12

12mm


1*

socket head screw M3x10

10mm


1*

socket head screw M3x16

16mm


1*

socket head screw M3x25

25mm


1*

socket head screw M3x30

30mm


1*

socket head screw M3x45

45mm


1*

socket head screw M3x60

60mm

1*

electronics 'dogbone' stand-offs


1*

spare parts


1*

M3 'nylock' locking nut

M3 oversized washer

4*

socket head screw M2x12
12mm

M3 plastite screw

1*

socket head screw M3x10
10mm

1*

socket head screw M3x16
16mm

1*

socket head screw M3x25
25mm

1*

socket head screw M3x30
30mm

1*

socket head screw M3x45
45mm

1*

socket head screw M3x60
60mm

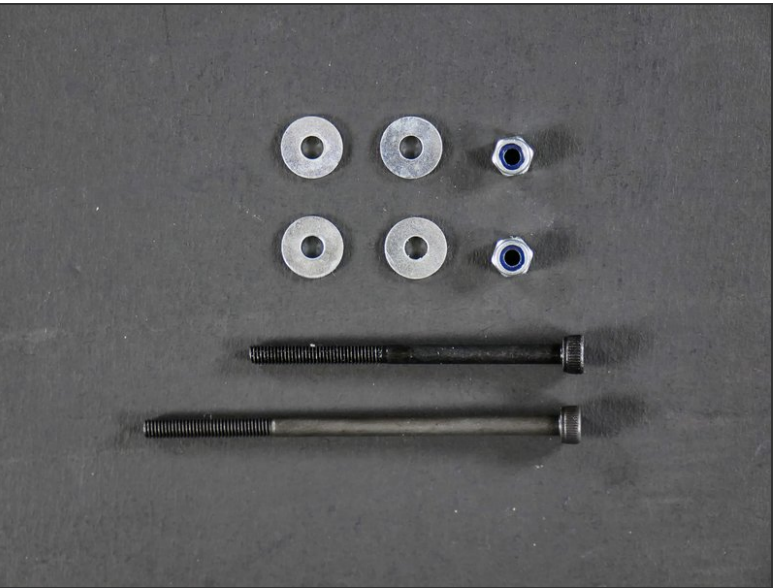
1*

electronics 'dogbone' stand-offs

1*

spare parts

1*



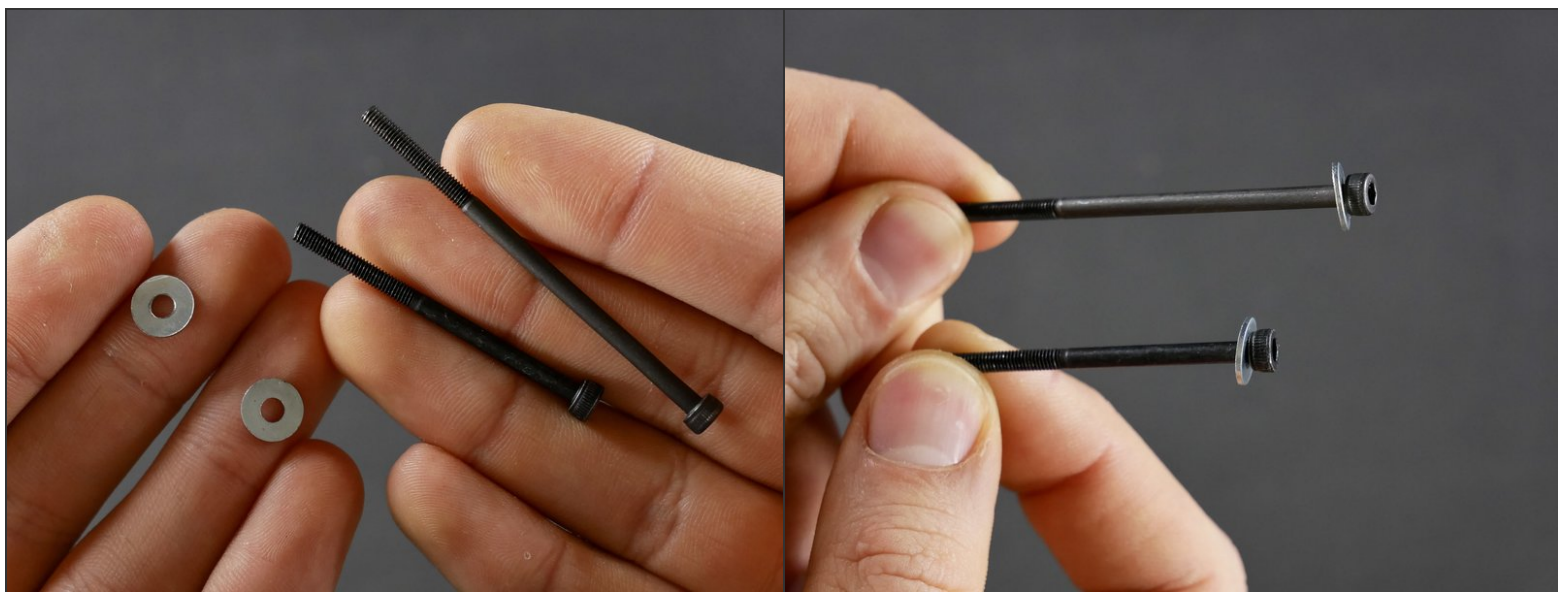
This document was generated on 2022-01-07 12:05:52 AM (MST).

© 2022

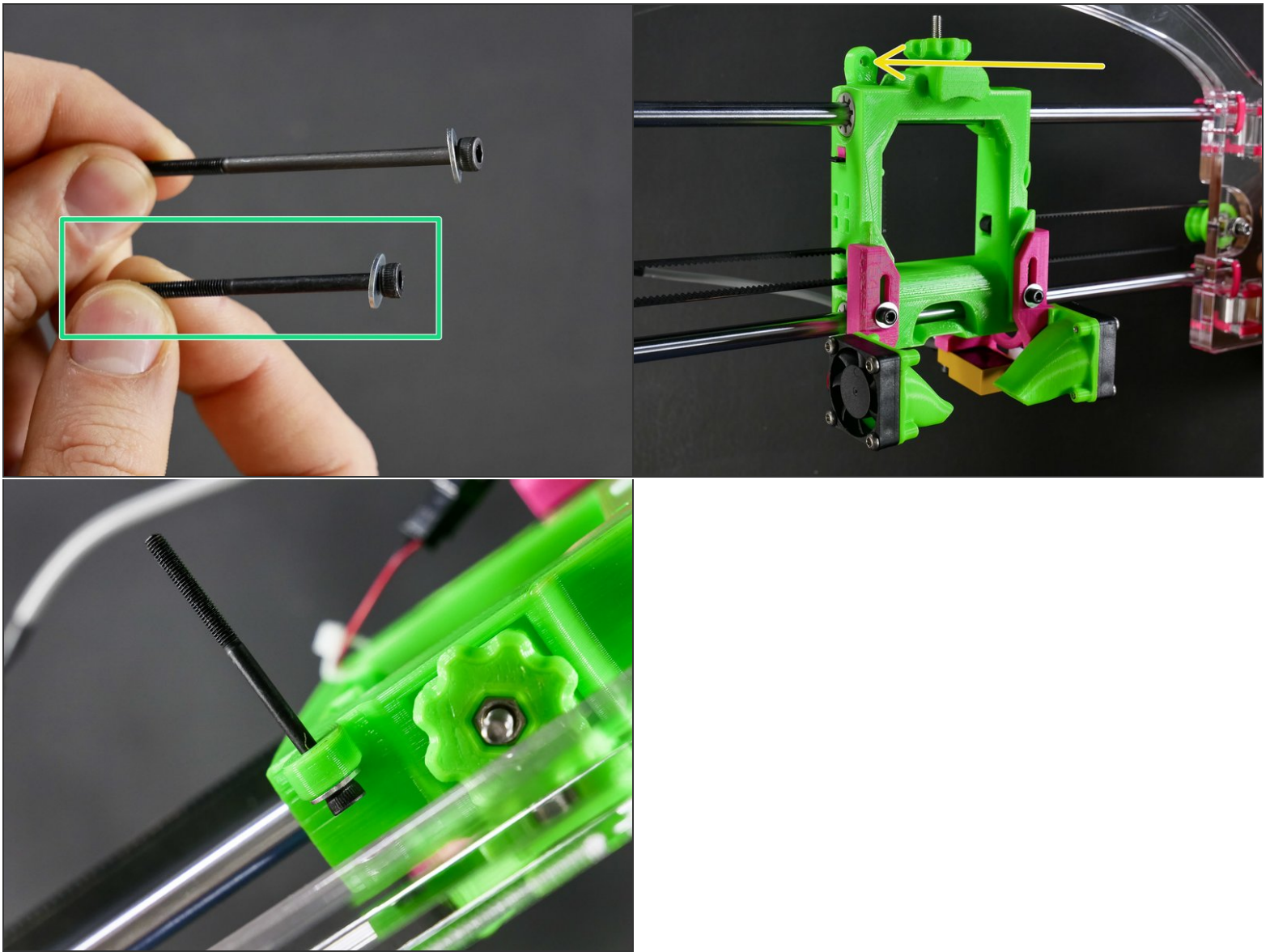
docs.imade3d.com/

Page 3 of 26

Step 3

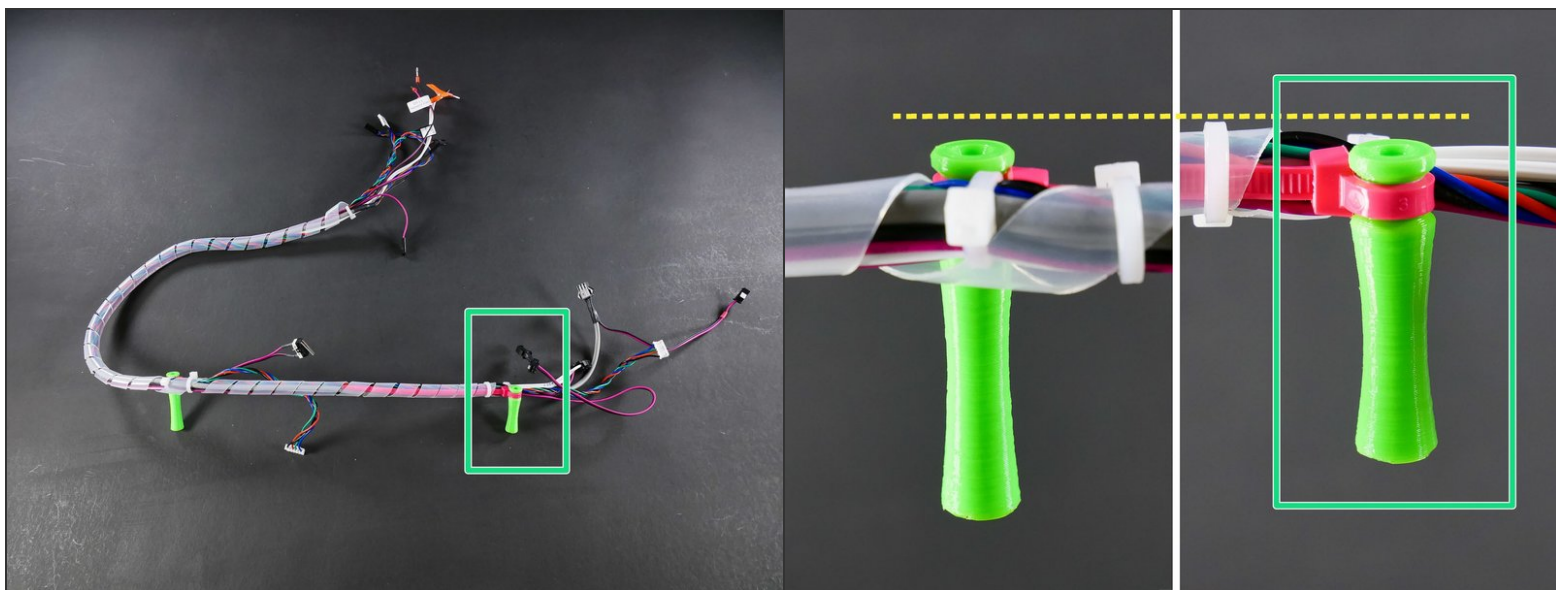


Step 4

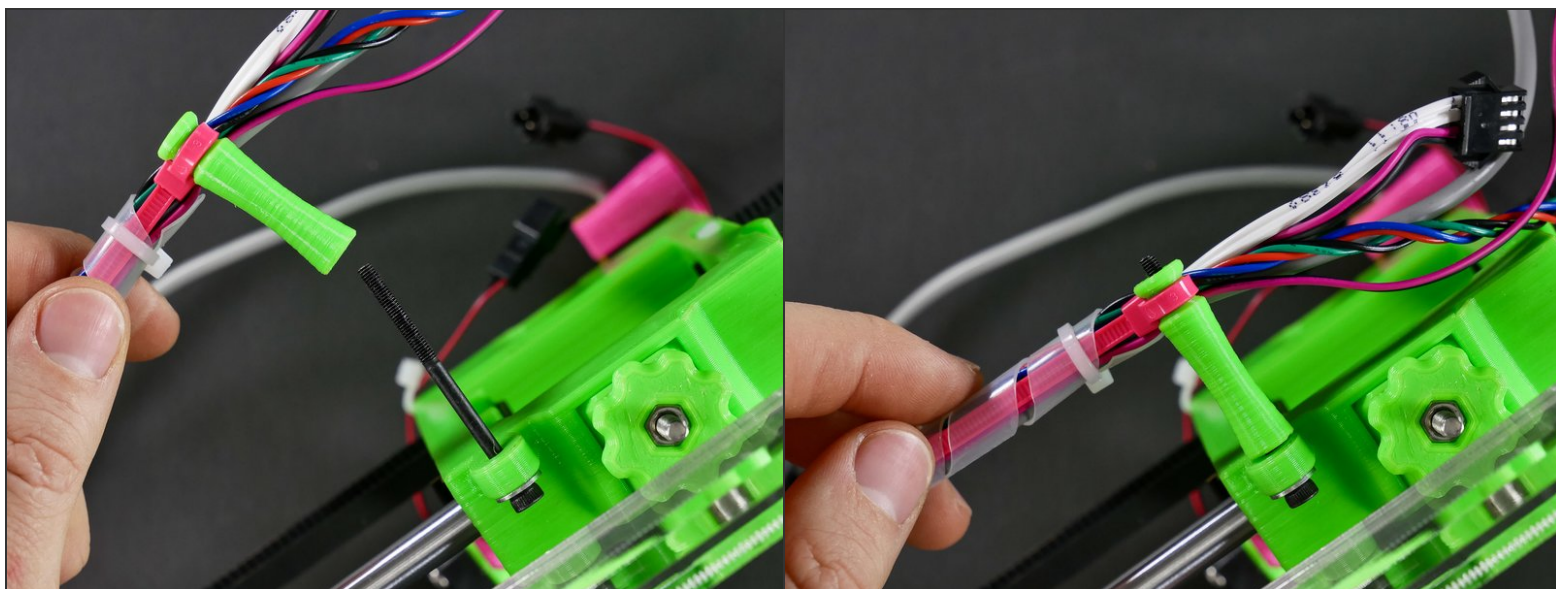


- M3x45

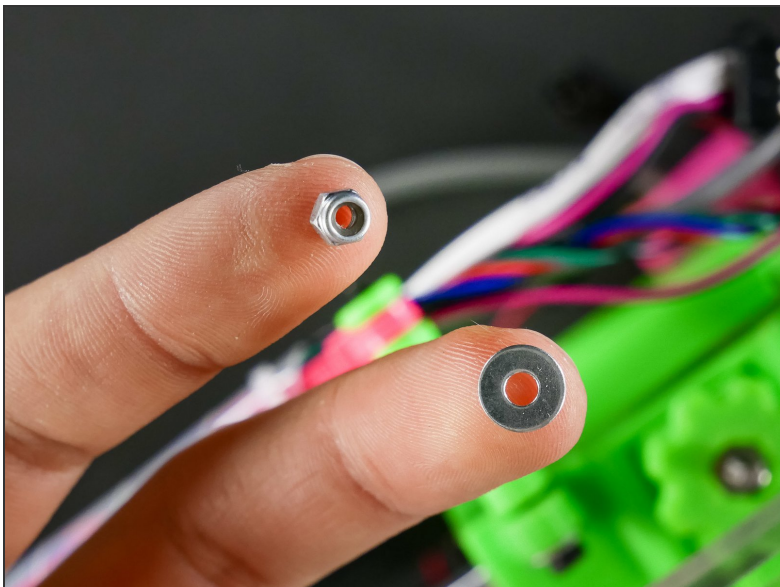
Step 5



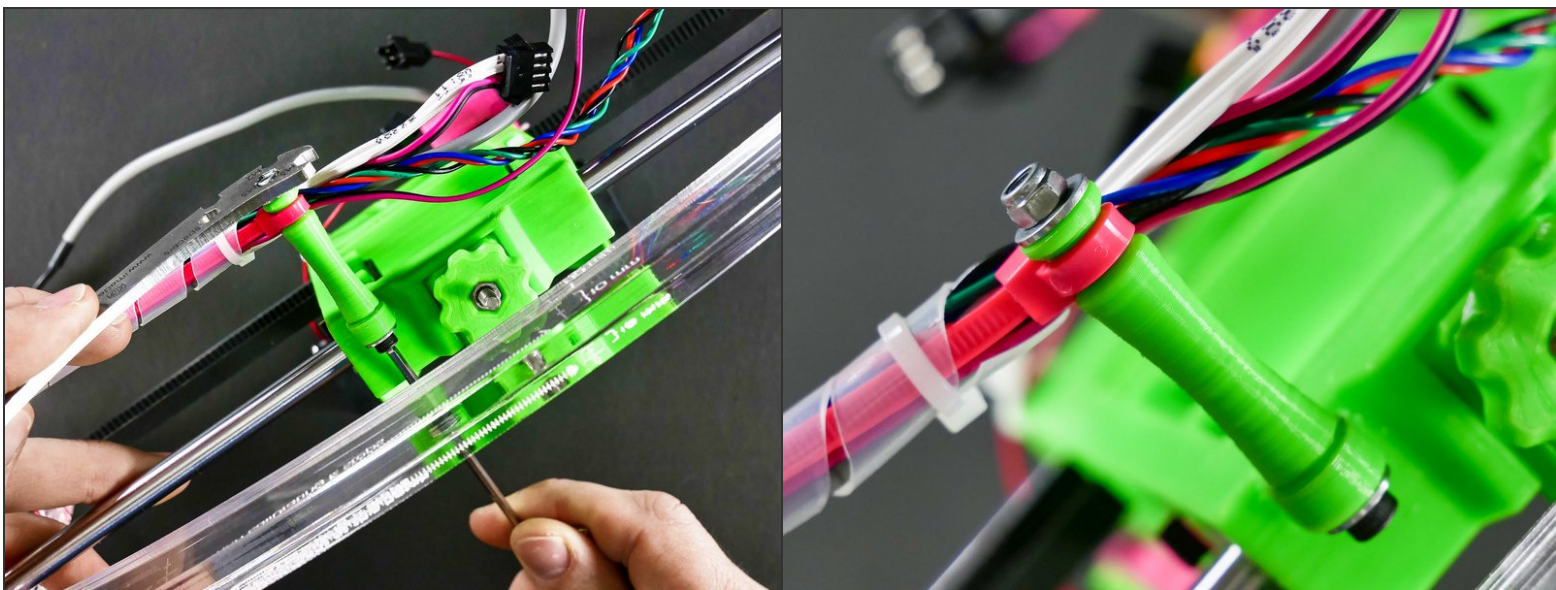
Step 6



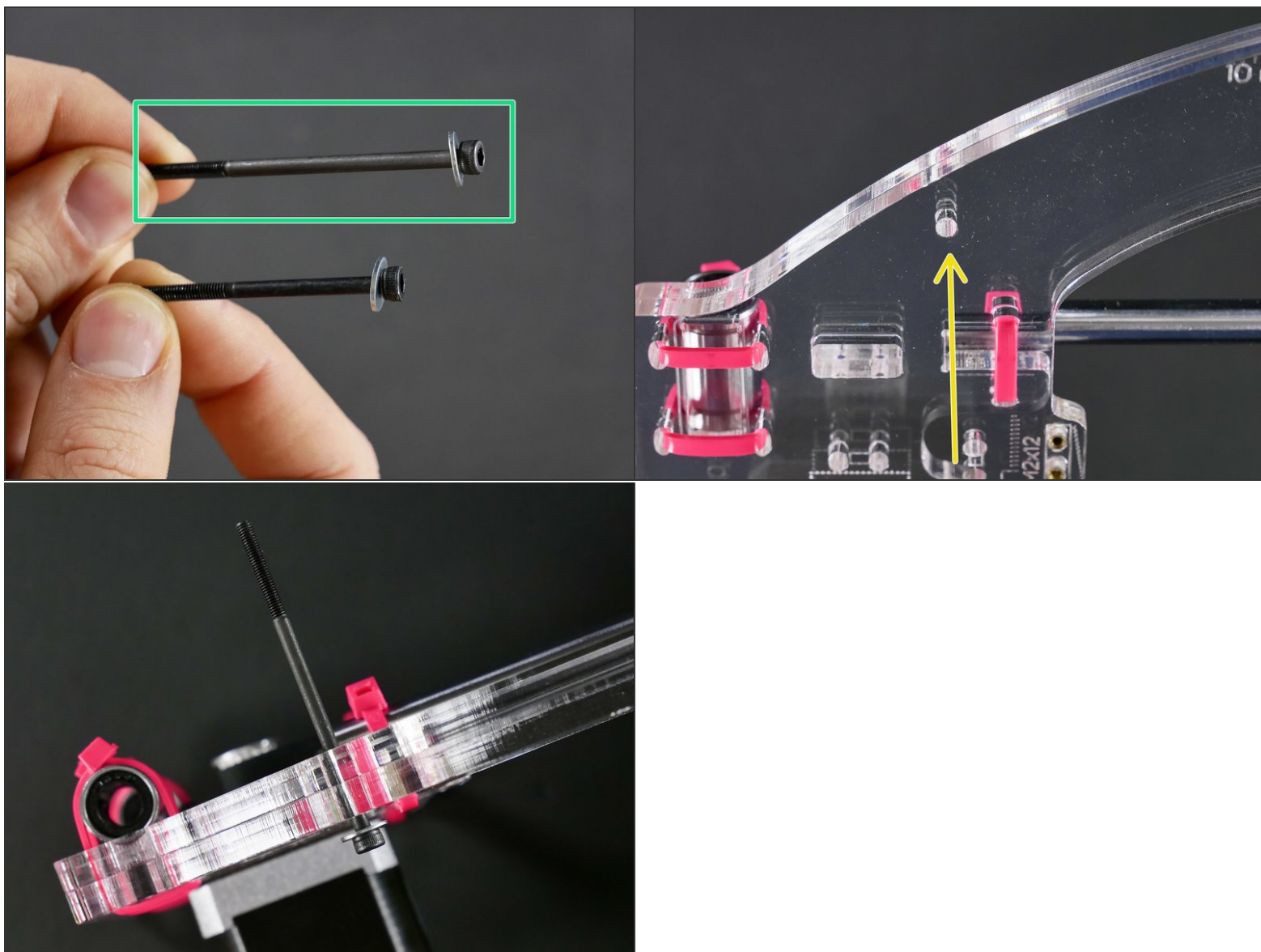
Step 7



Step 8

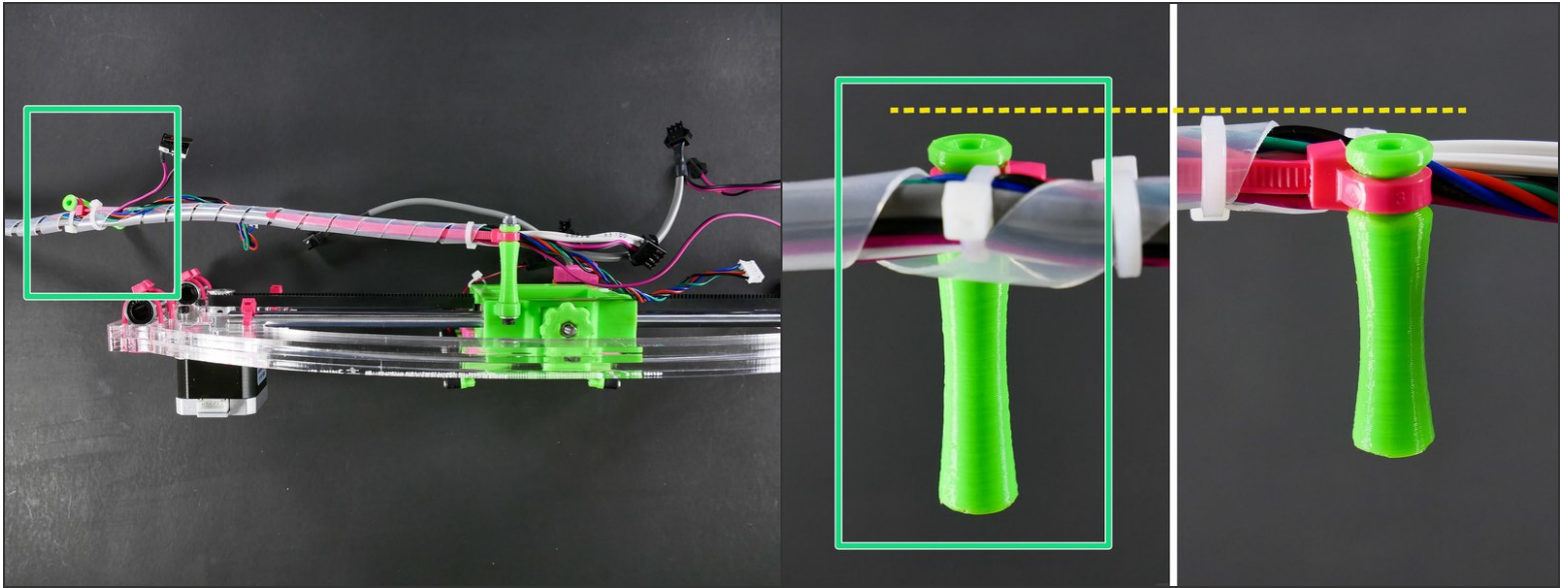


Step 9

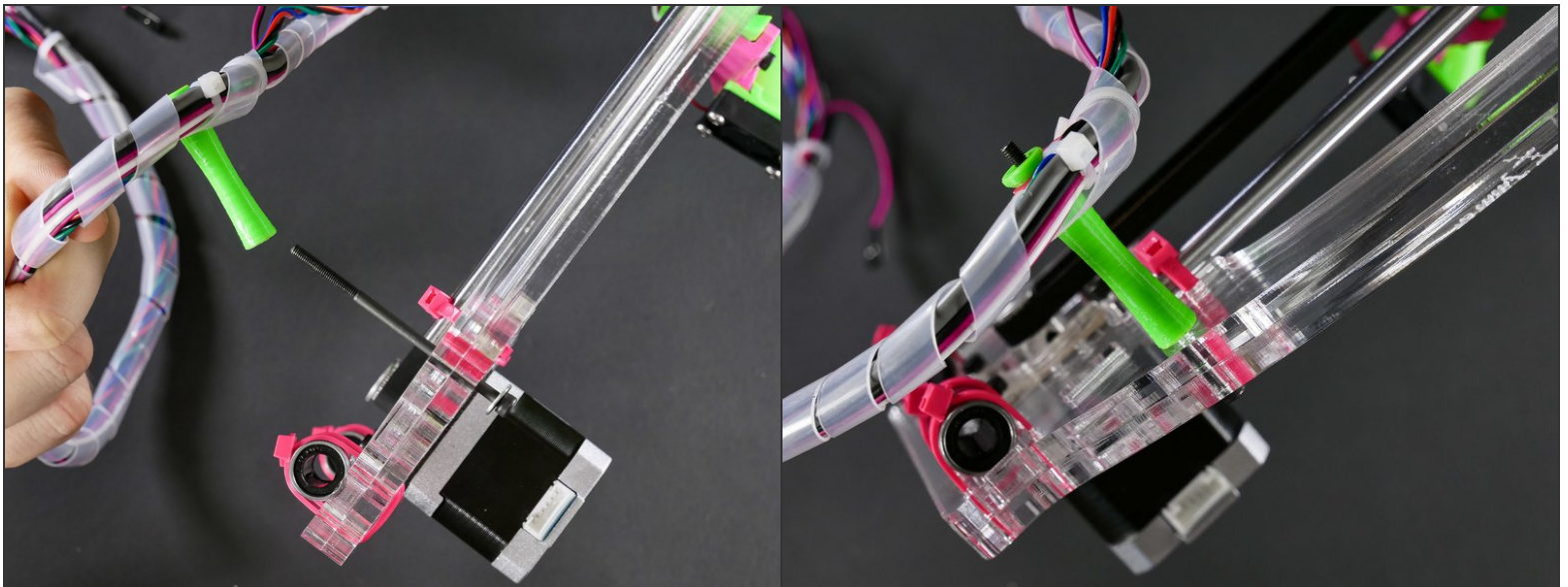


- M3x60

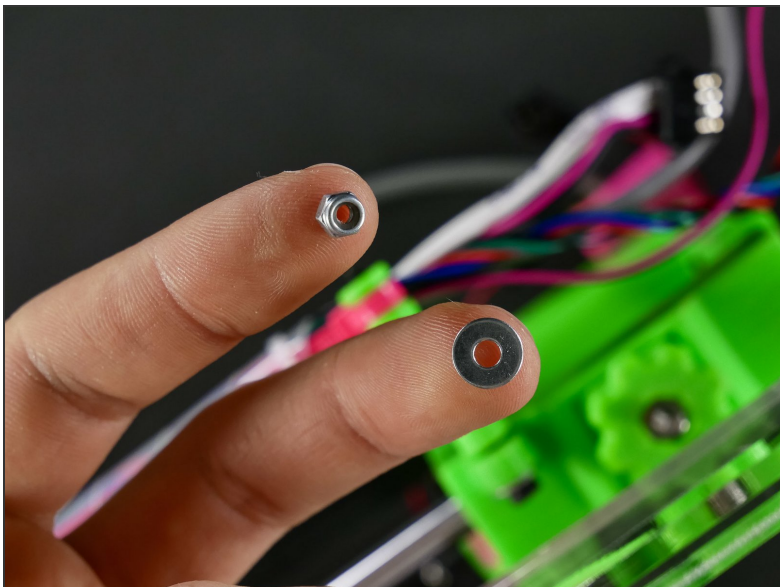
Step 10



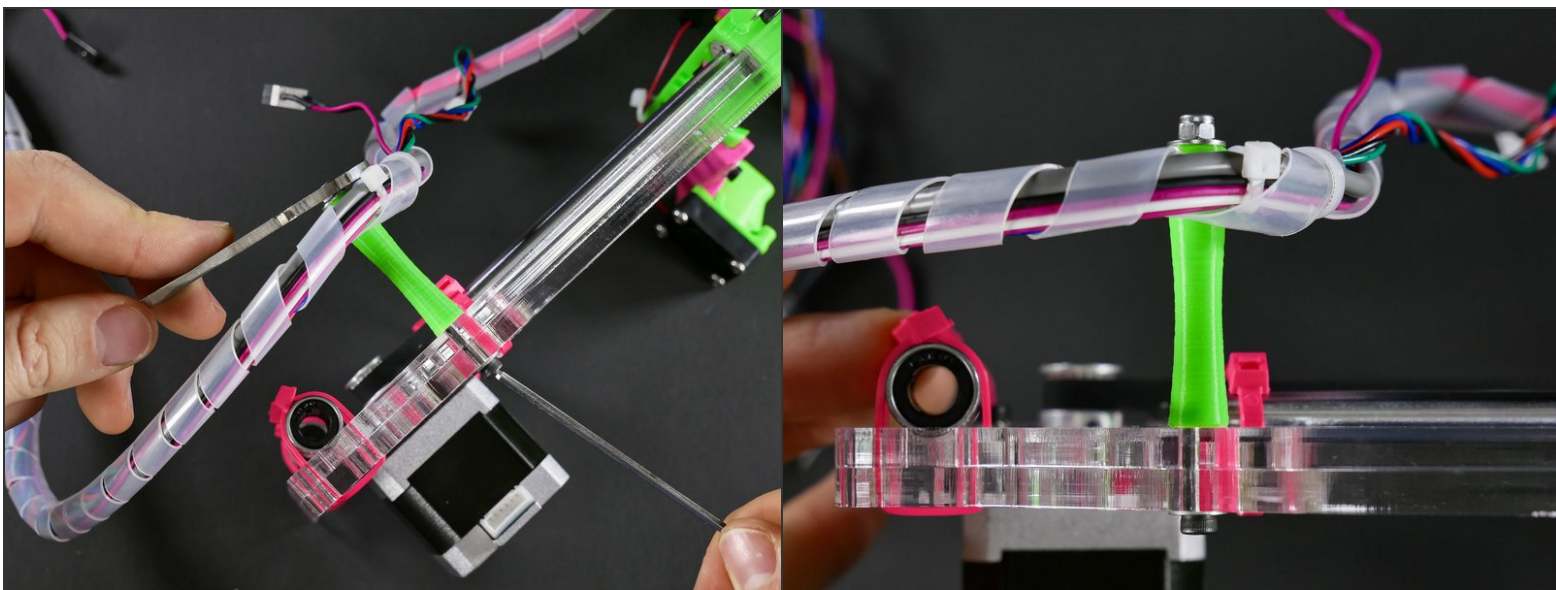
Step 11



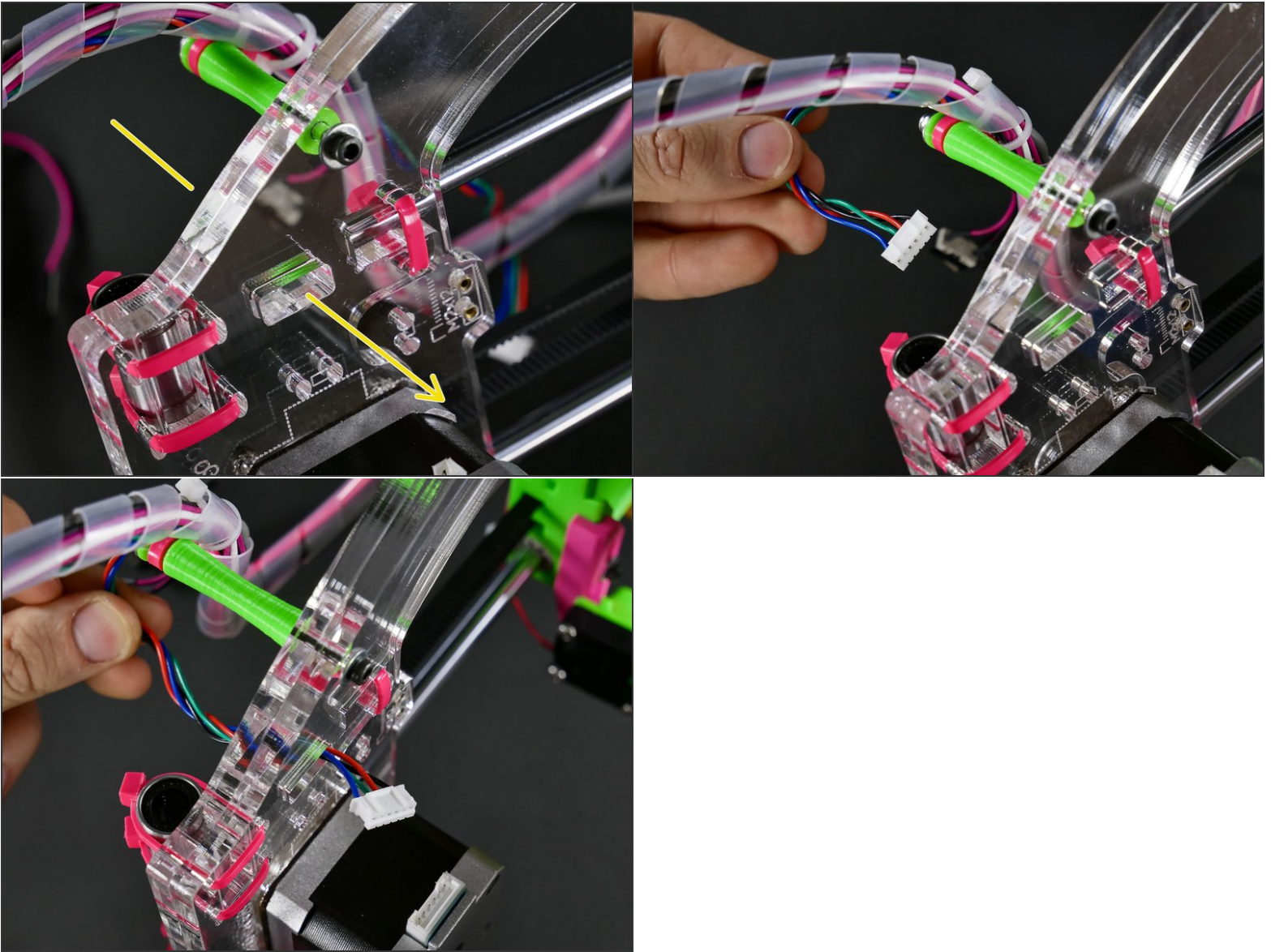
Step 12



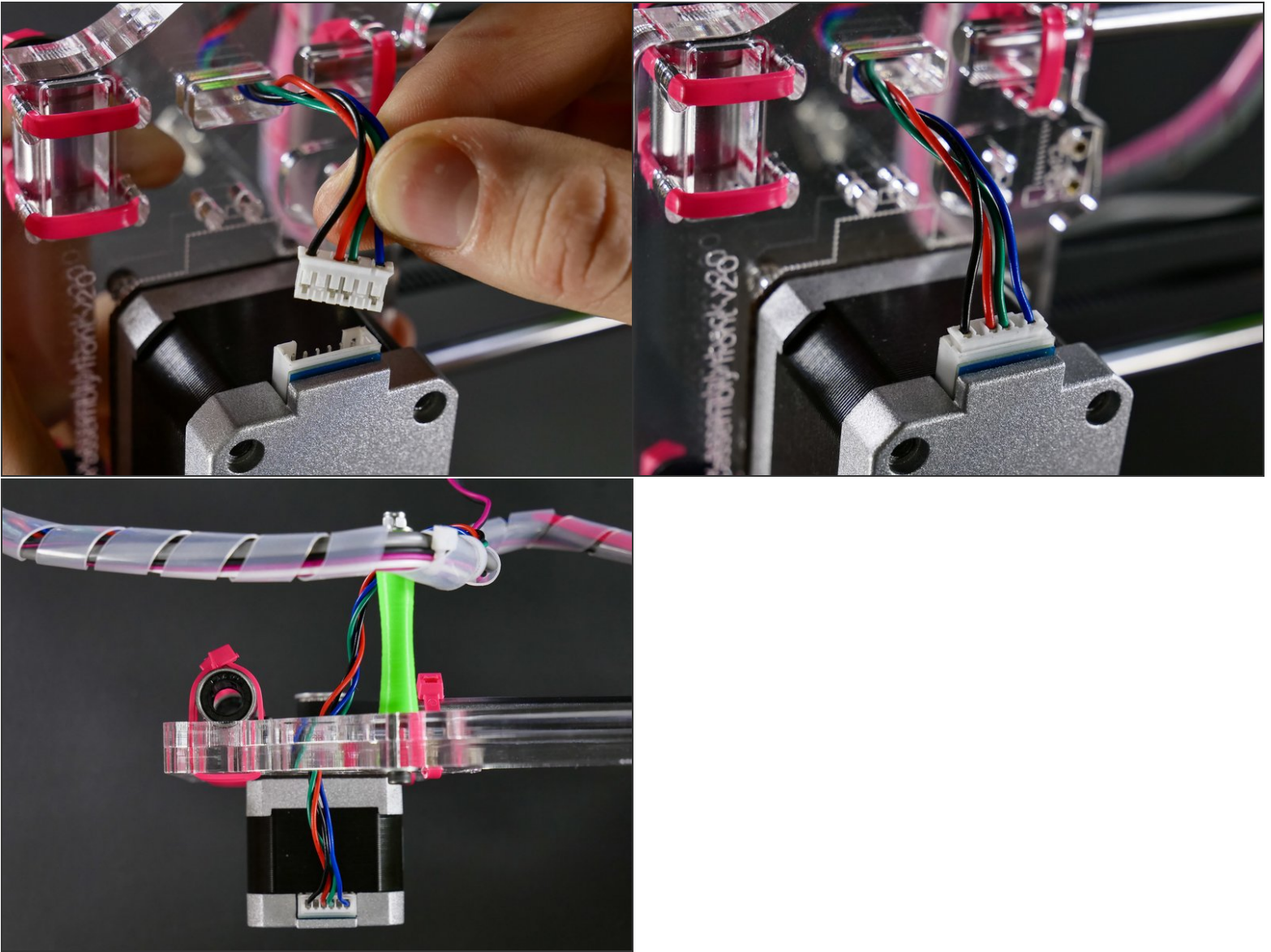
Step 13



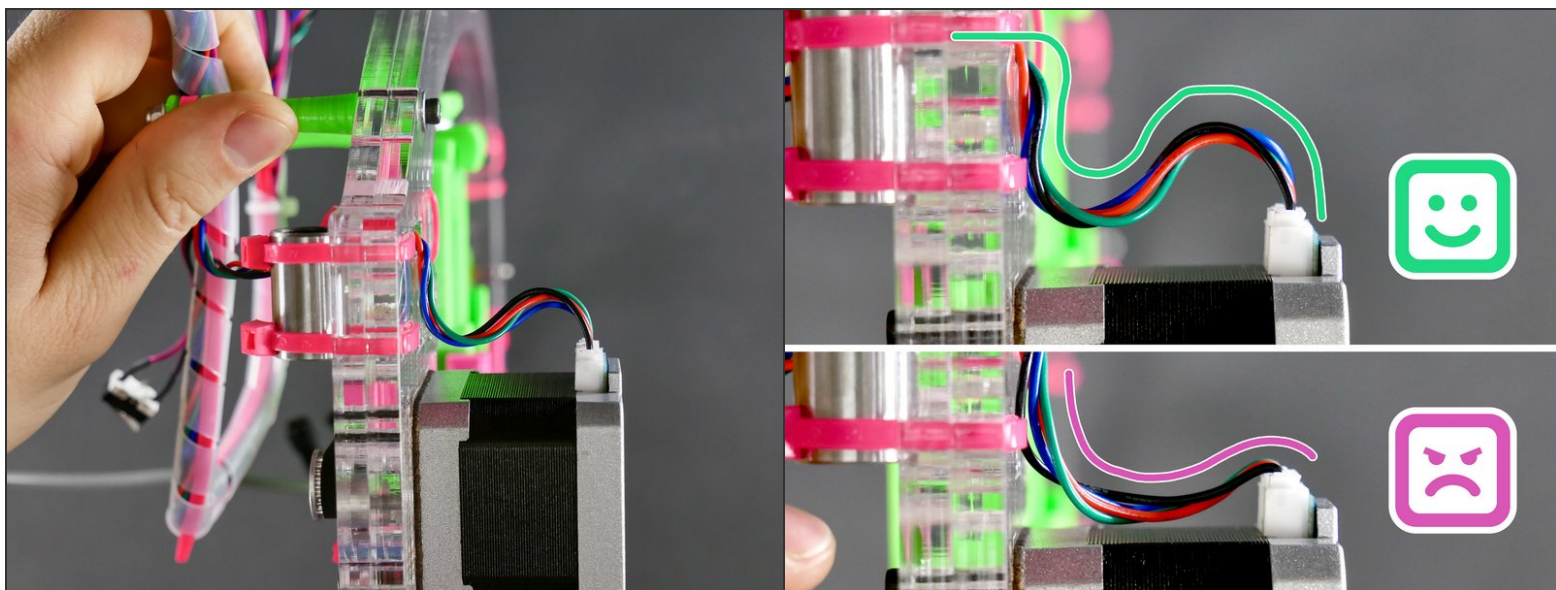
Step 14



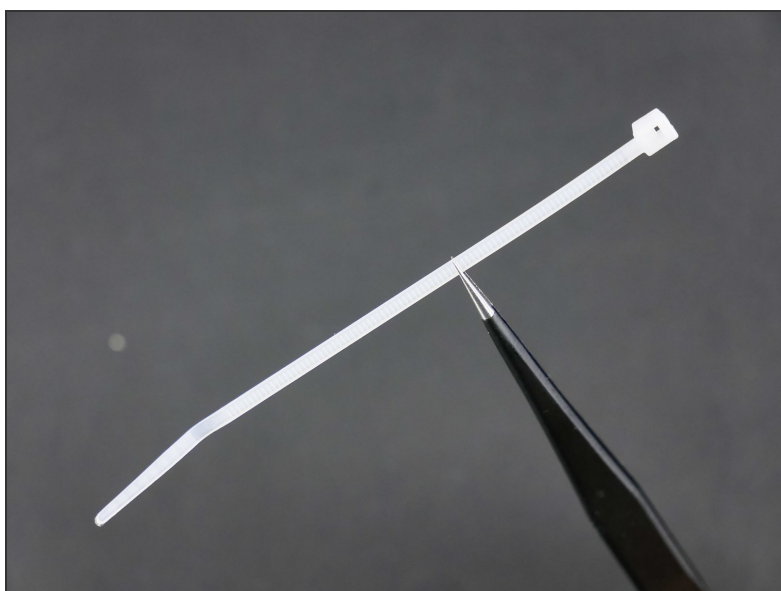
Step 15



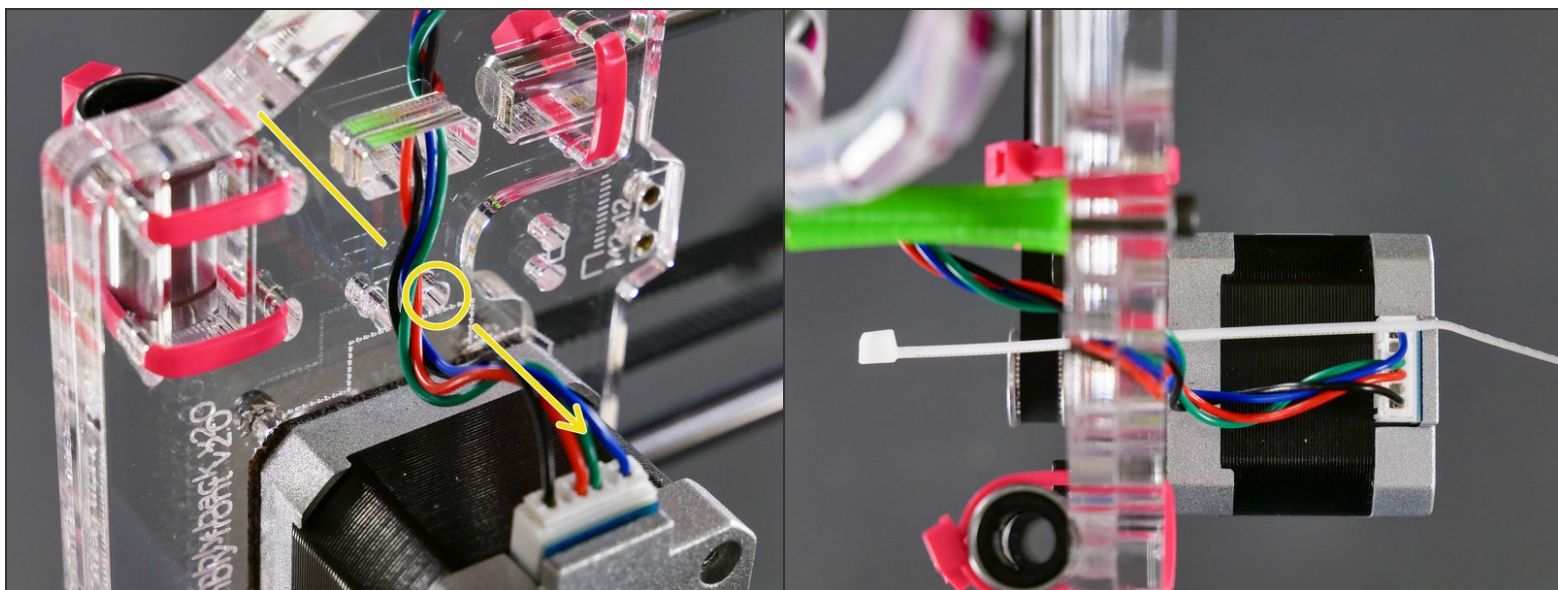
Step 16



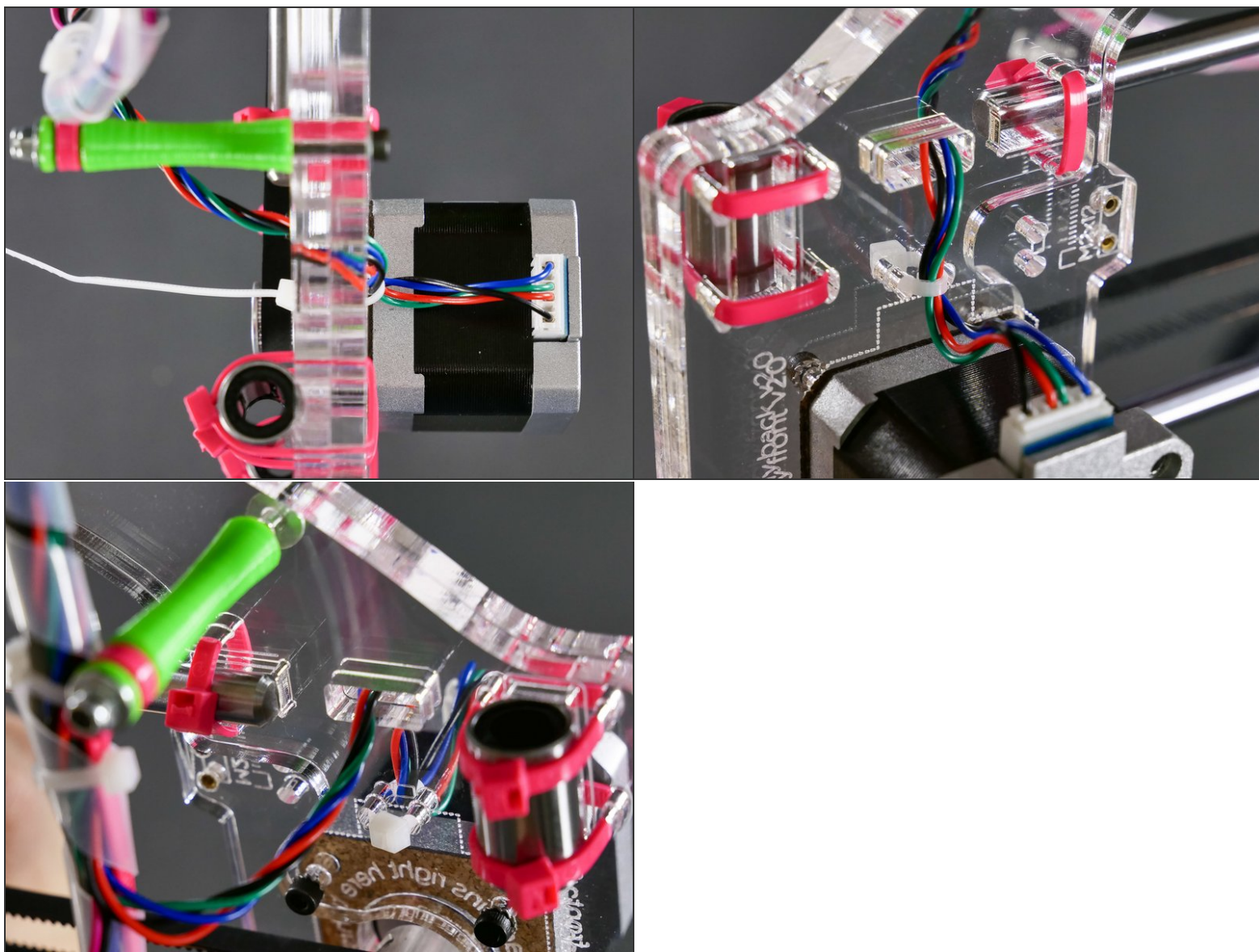
Step 17



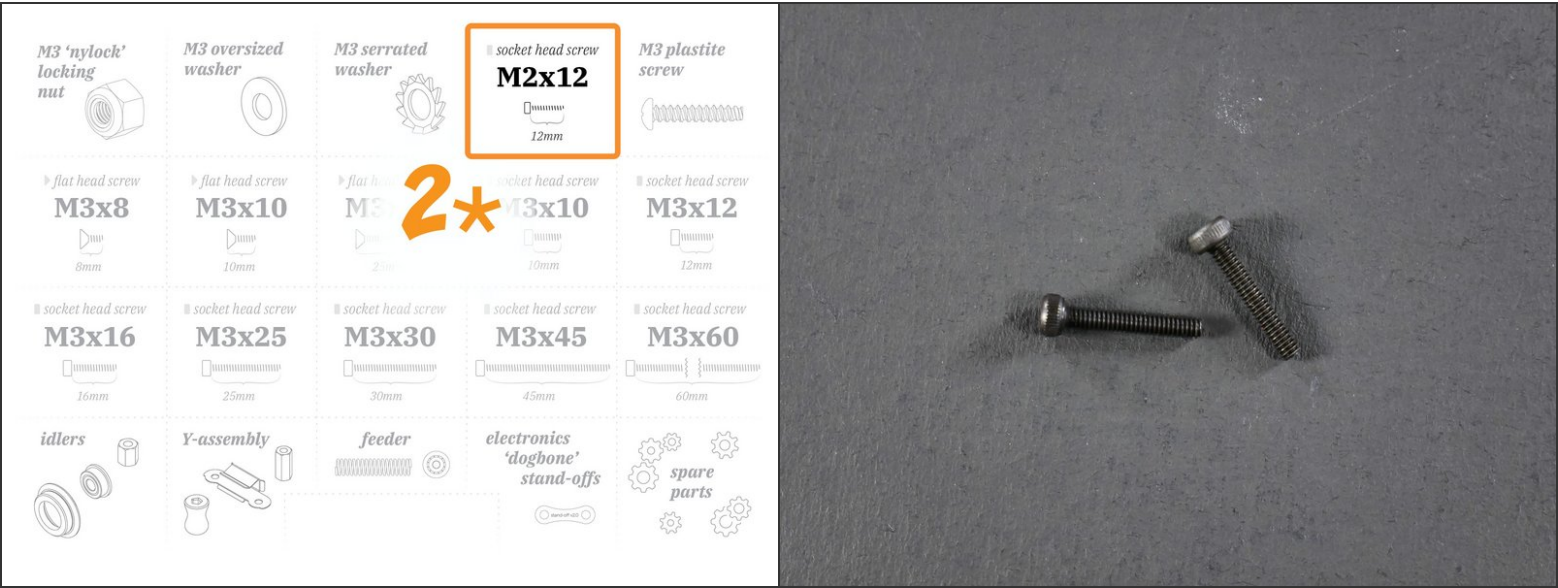
Step 18



Step 19

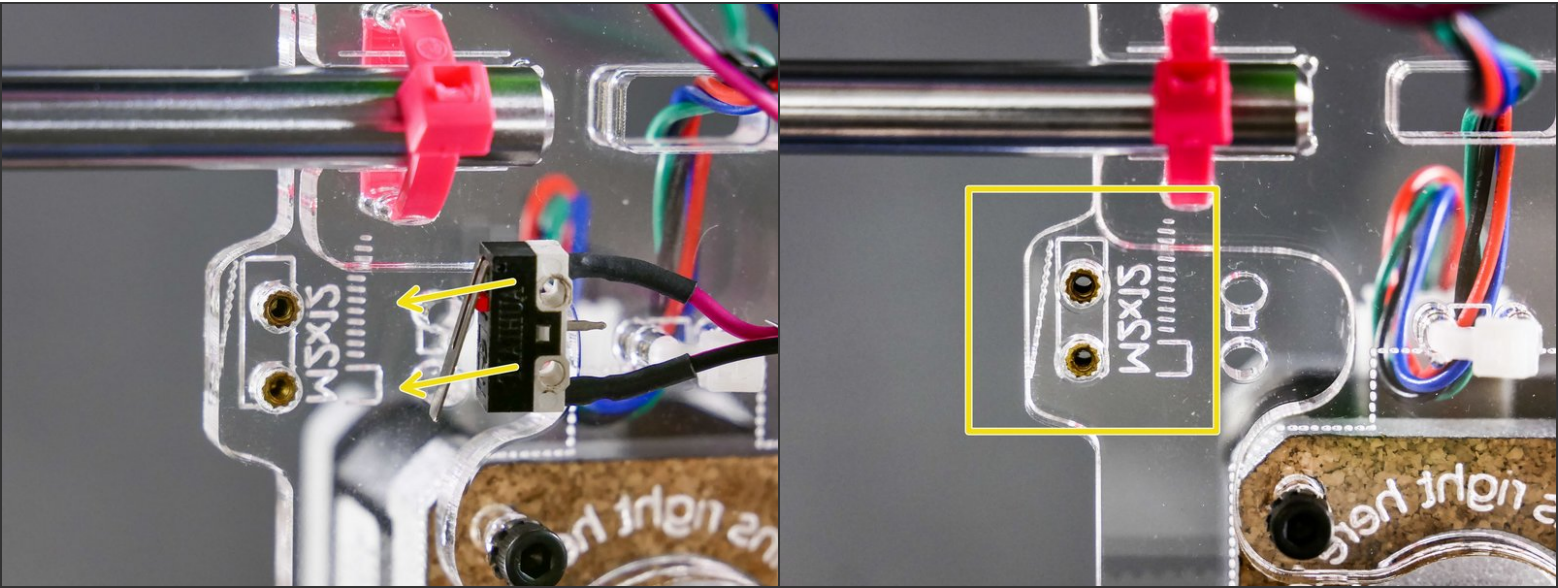


Step 20

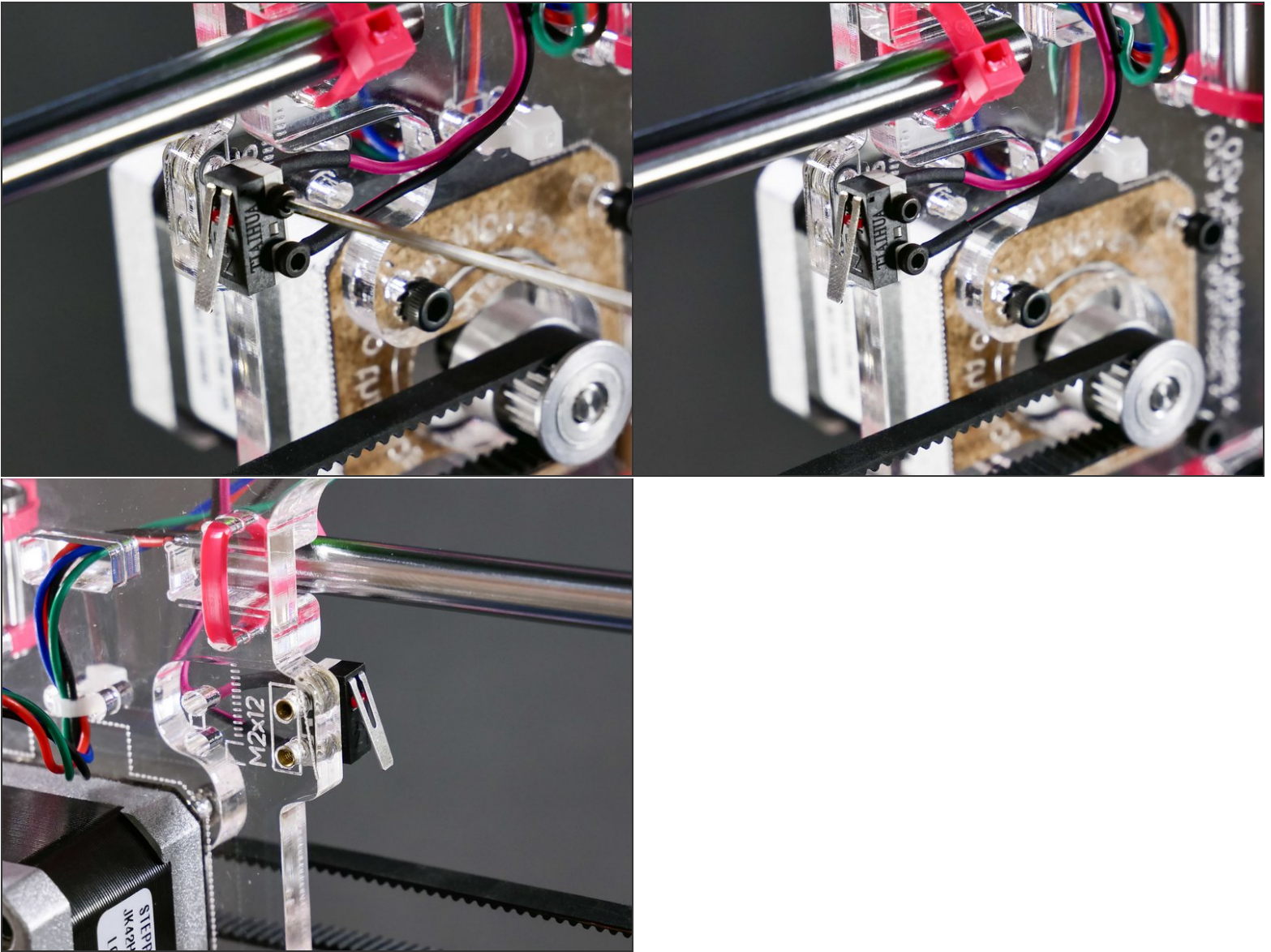


- M2x12 (these are **tiny**; NOT the regular M3 screws)

Step 21



Step 22

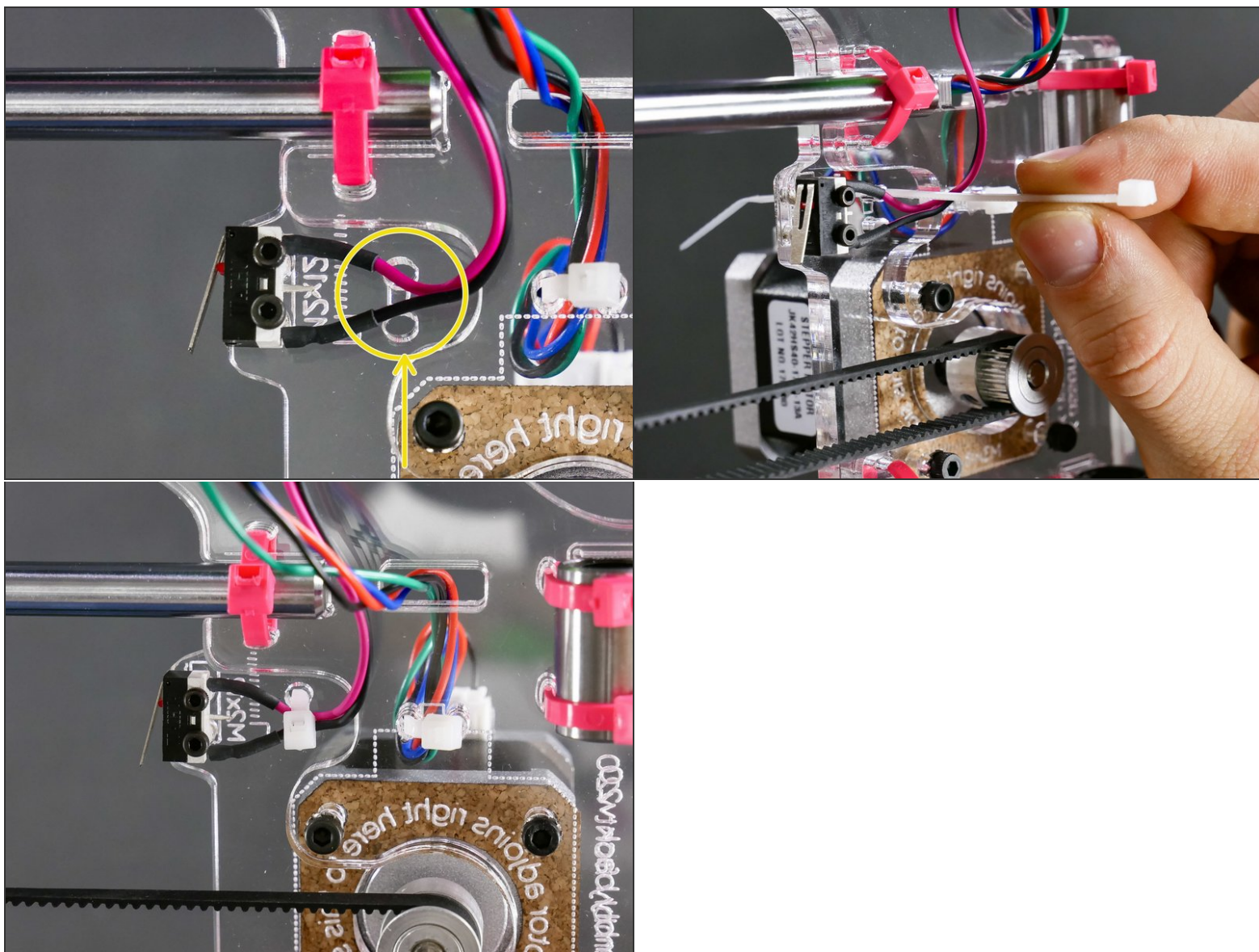


- M3x12

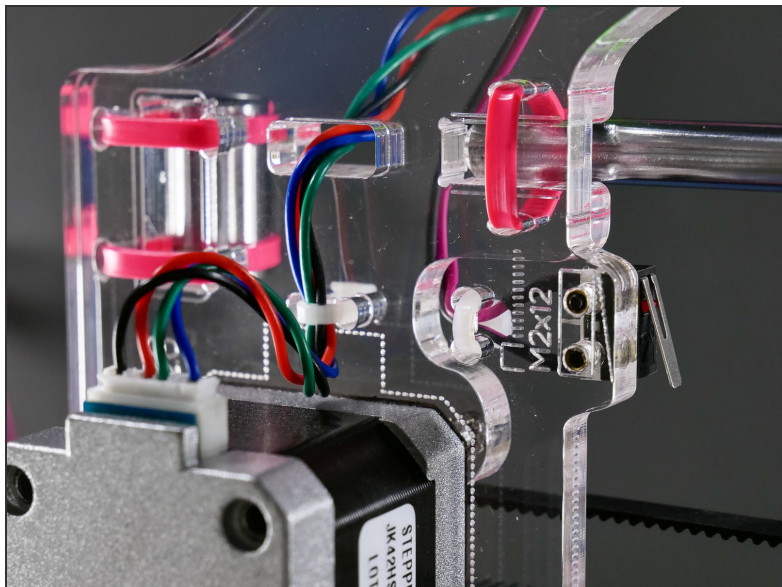
Step 23



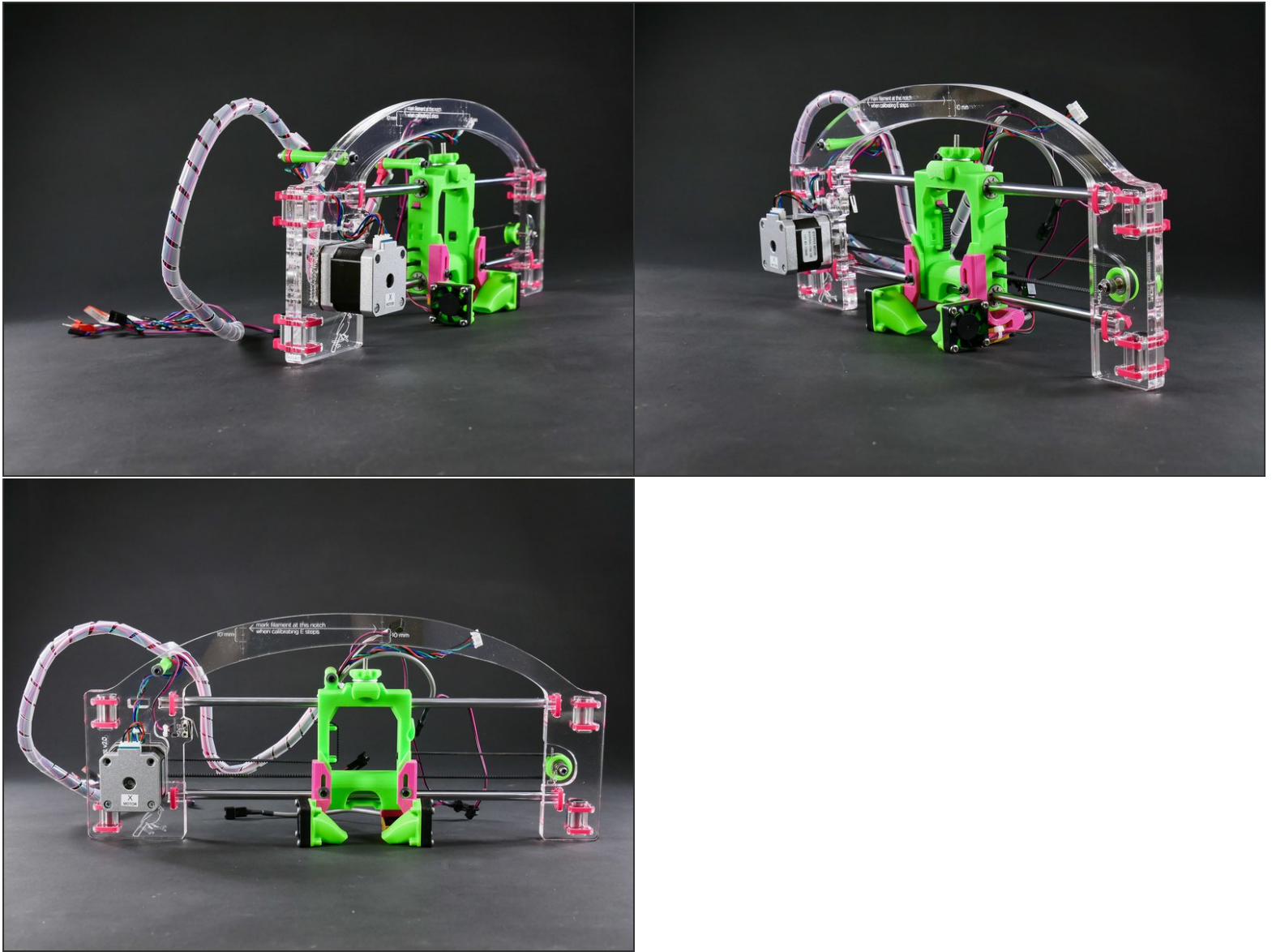
Step 24



Step 25

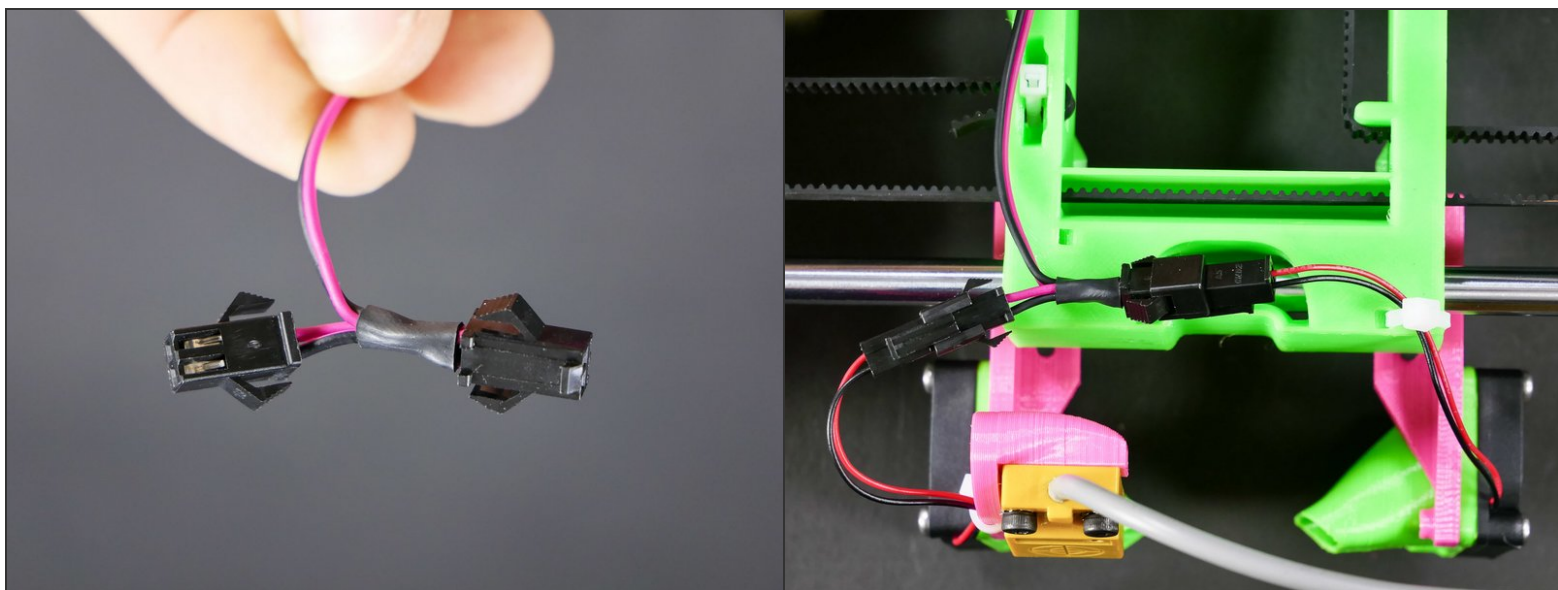


Step 26 — Doing great so far!

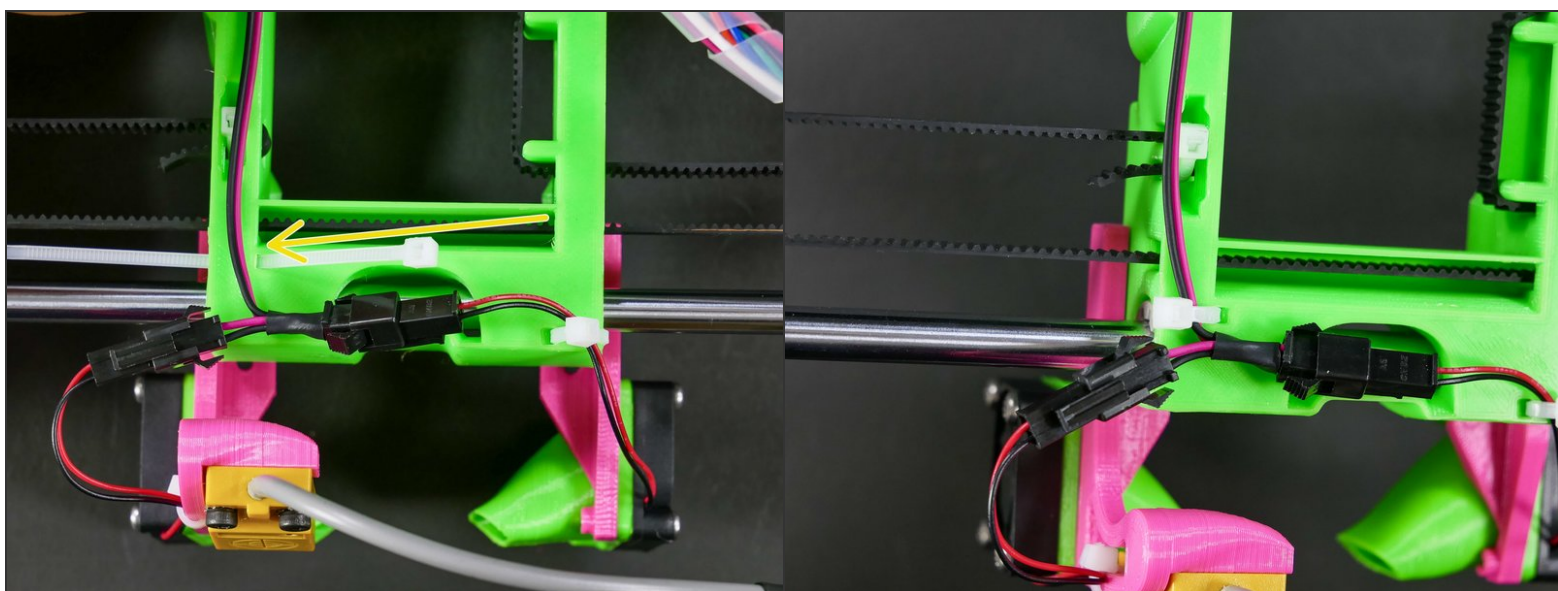


- It's really coming along well.

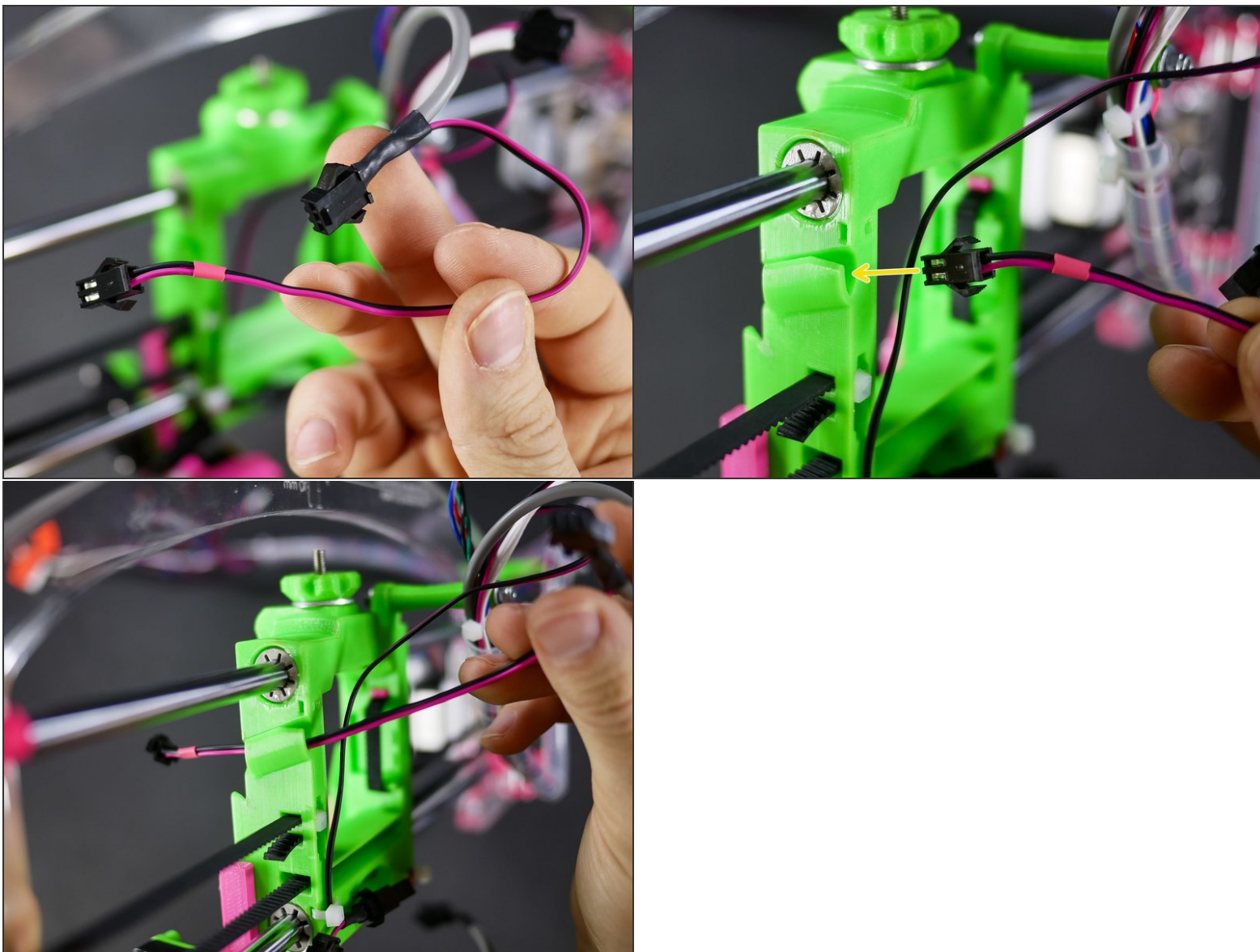
Step 27



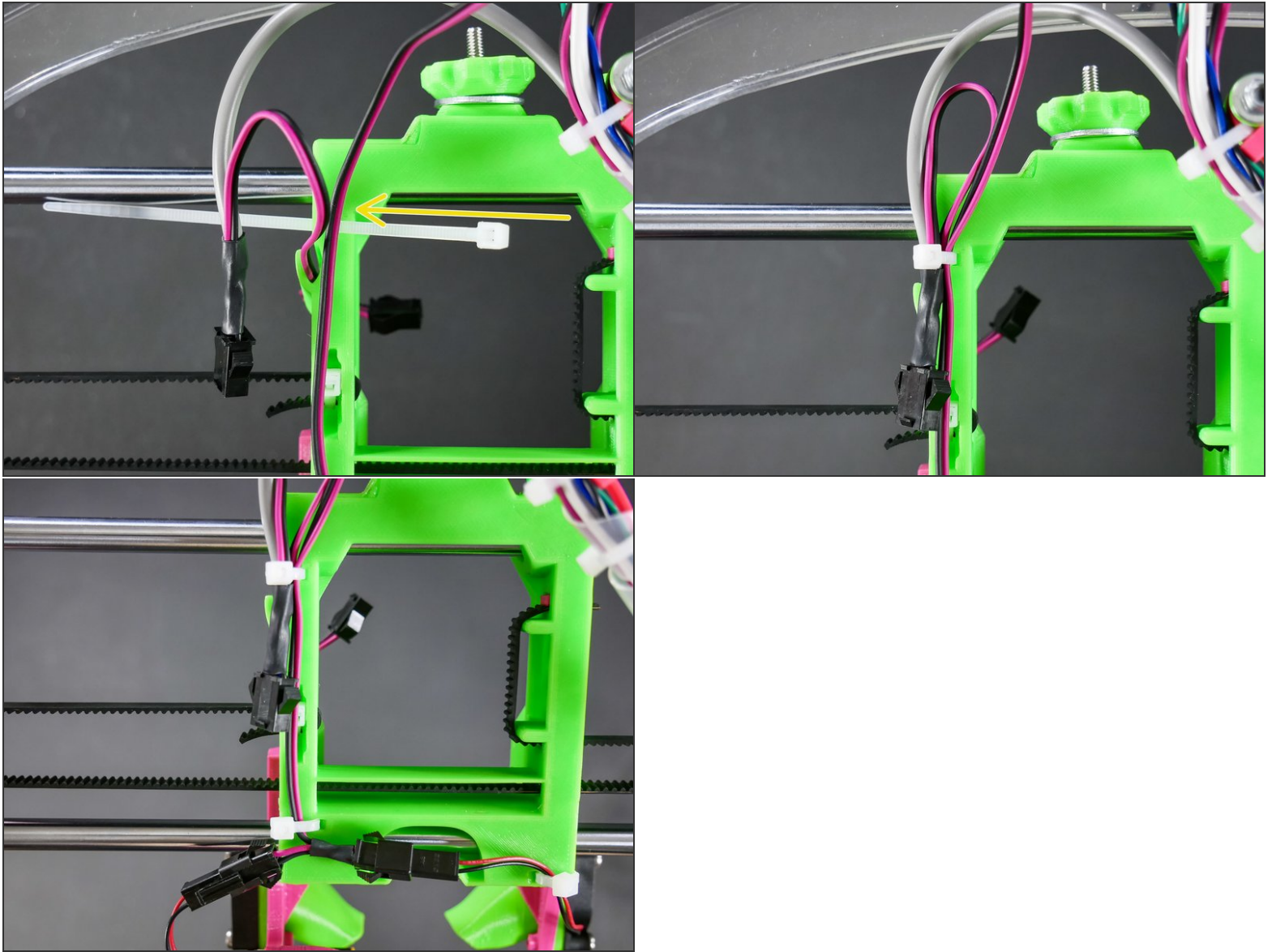
Step 28



Step 29

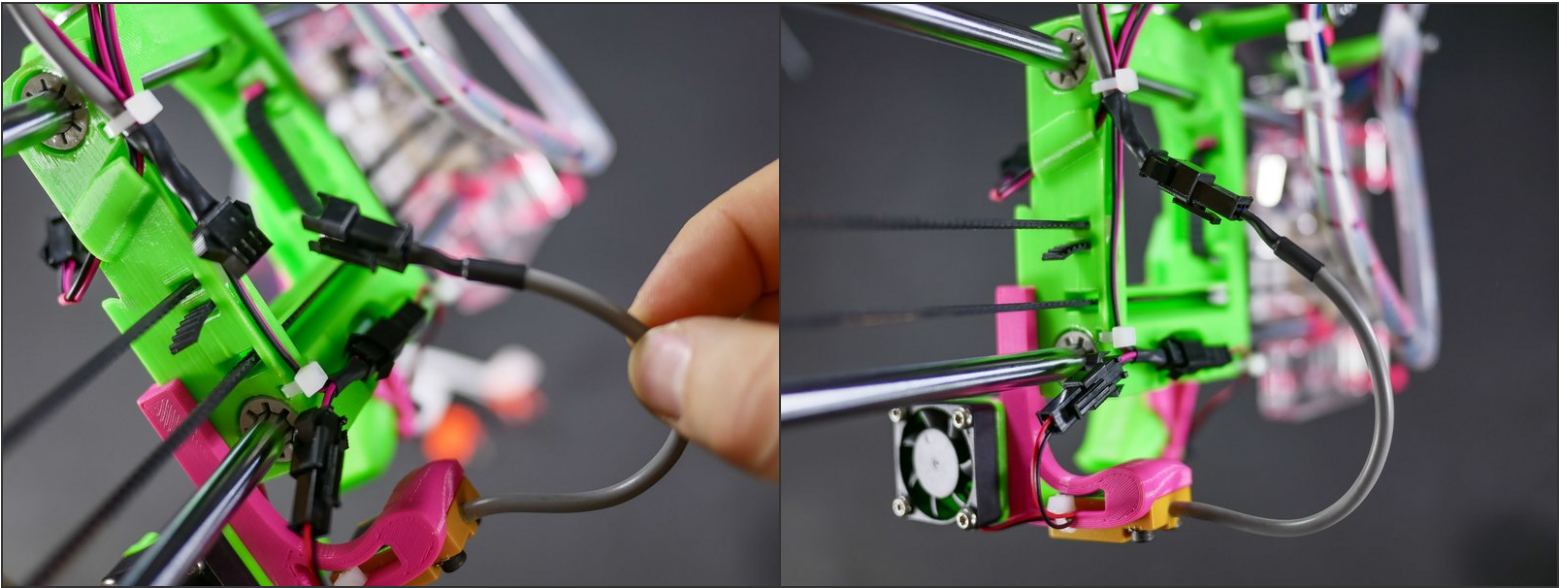


Step 30

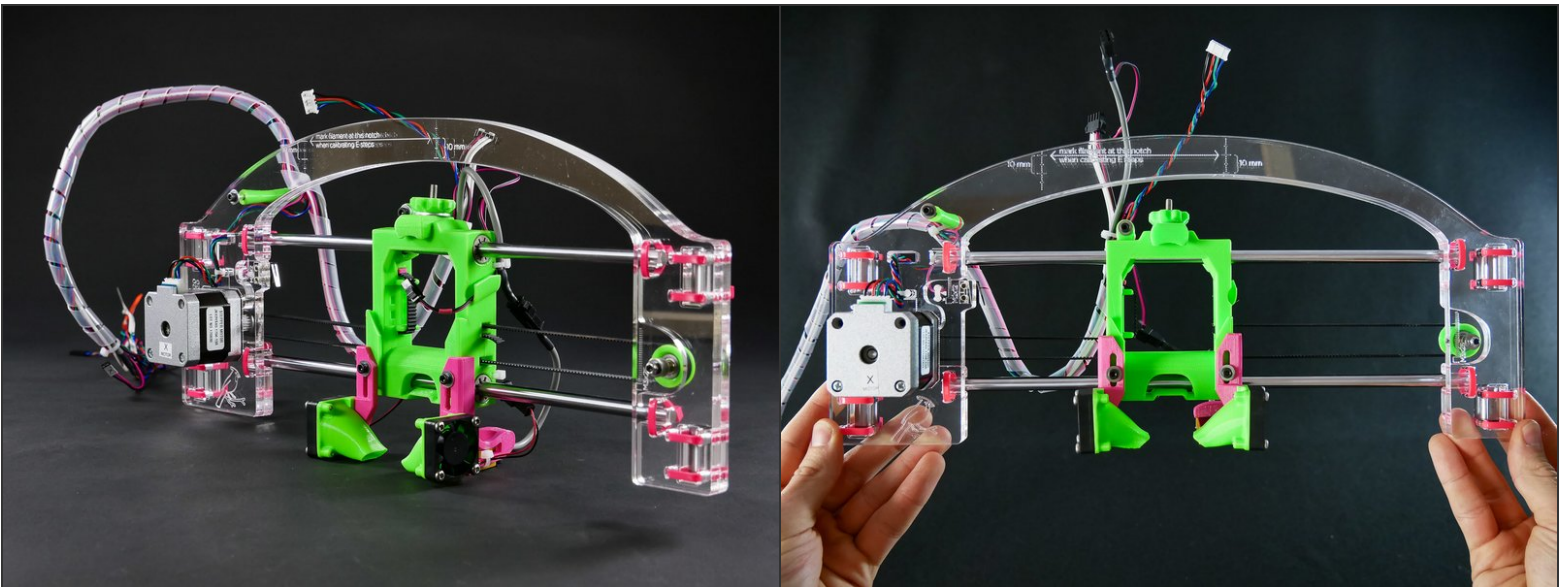


- This complicated looking loop is a *strain relief* for the wires. It's to avoid sharp angles that can break wires.

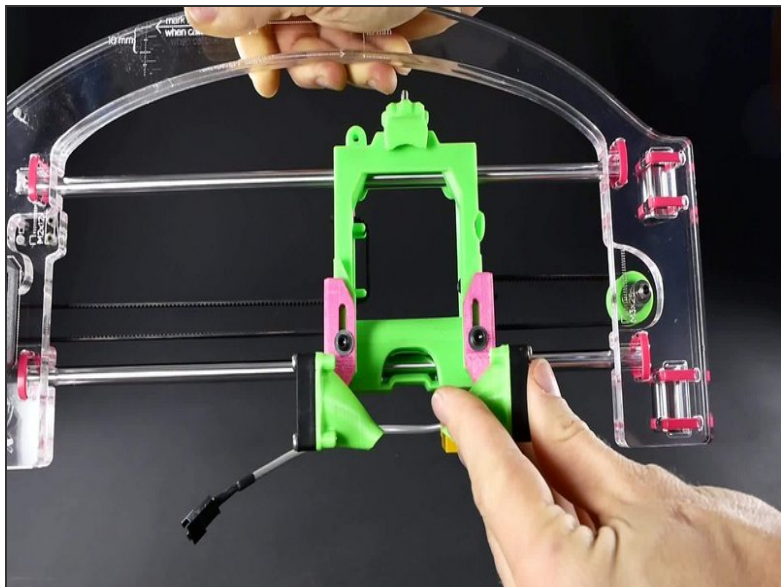
Step 31



Step 32 — Looking good!



Step 33 — ► Video: JellyBOX 2 Build: X Mechanical Checkpoint #2



- ► Video: JellyBOX 2 Build: X Mechanical Checkpoint #2

What's Next?

Get back to the [◀ Easy Kit Build Flow](#) and continue with the next guide.