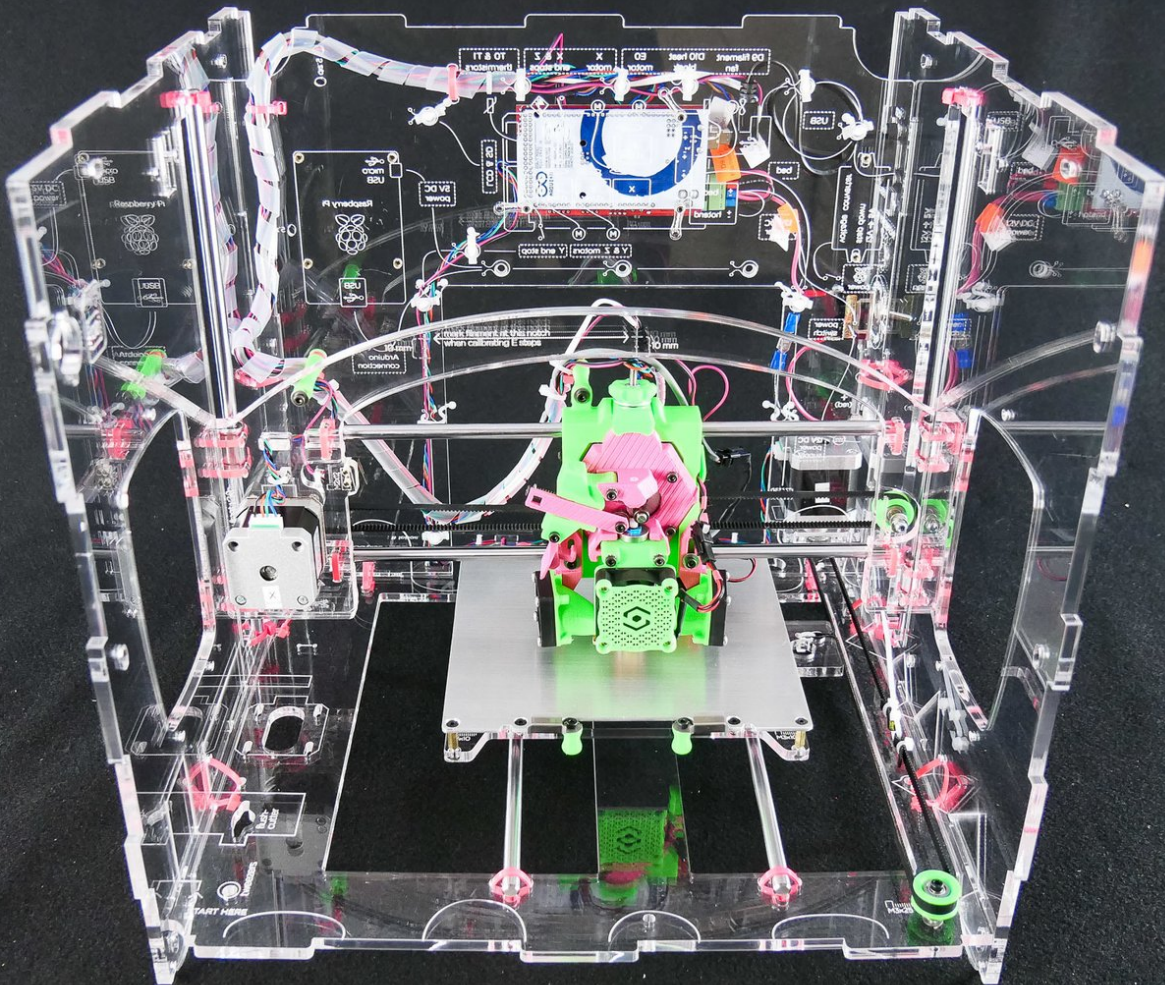




Install the X Assembly

Install the X Assembly

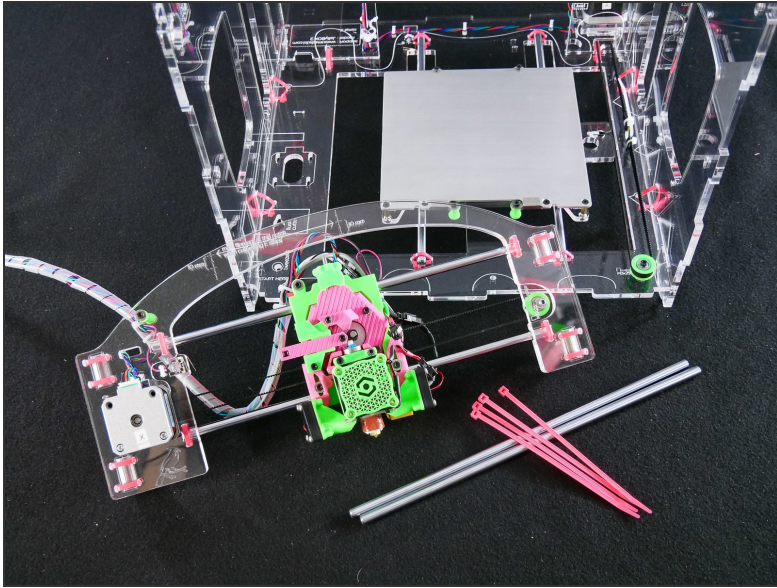


INTRODUCTION

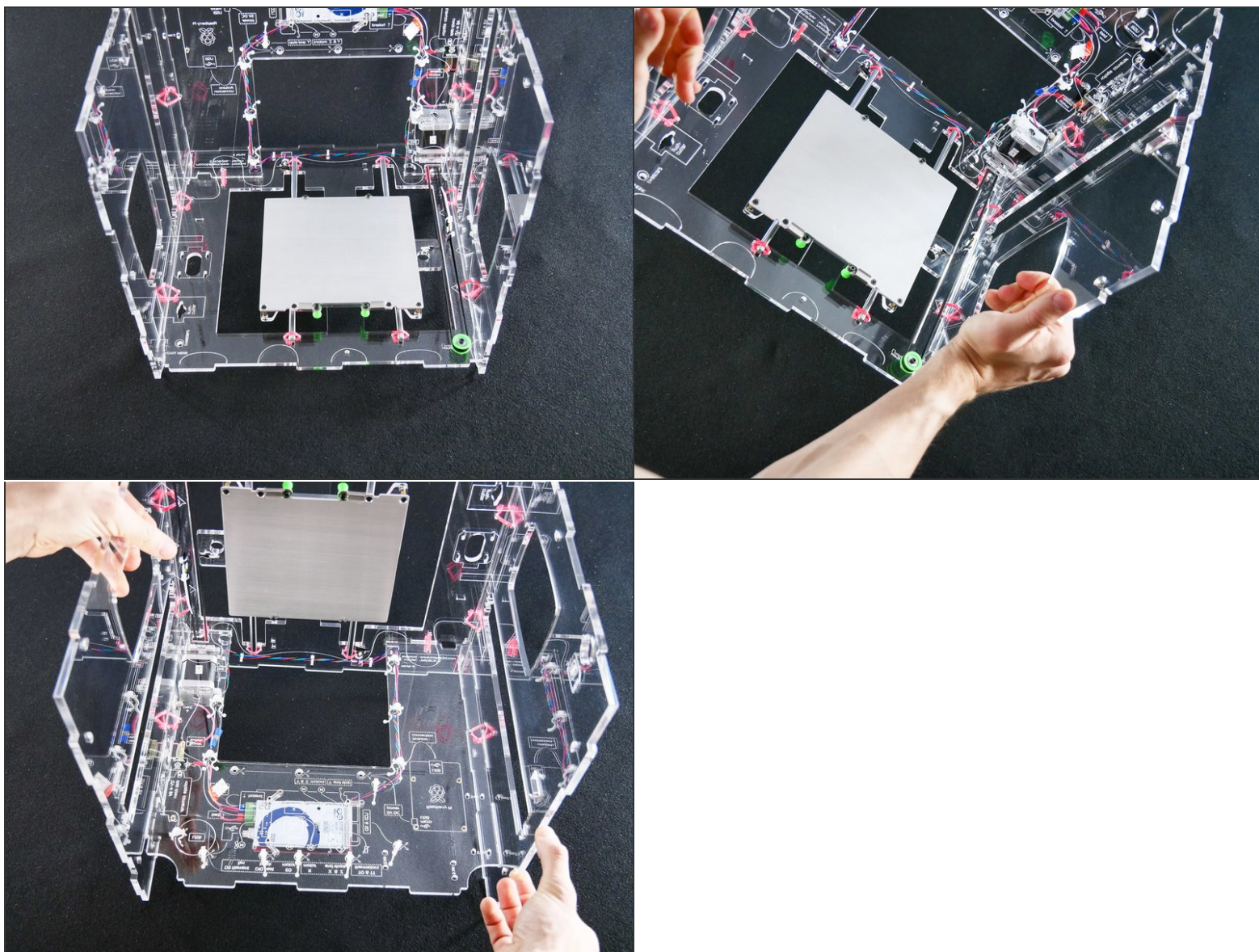
Not the guide you are looking for?

Go back to the [← Easy Kit Build Flow.](#)

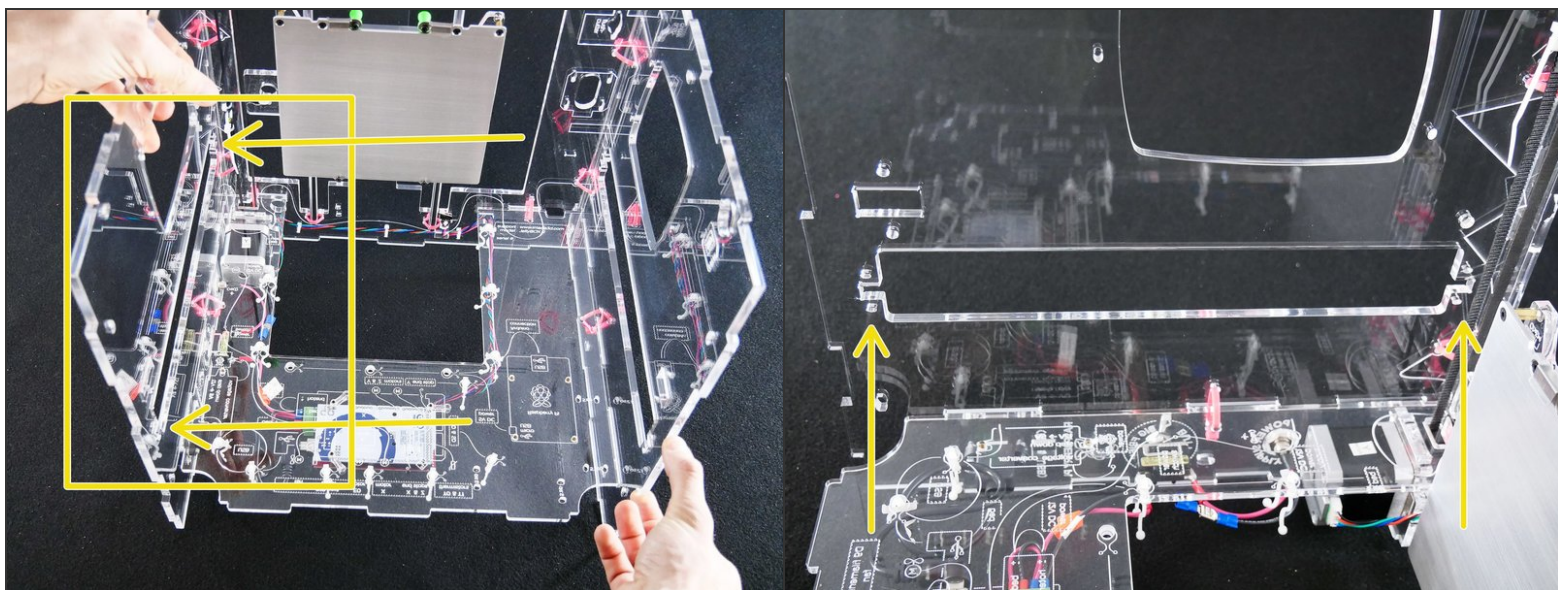
Step 1 — ↳ Insert the X Assembly



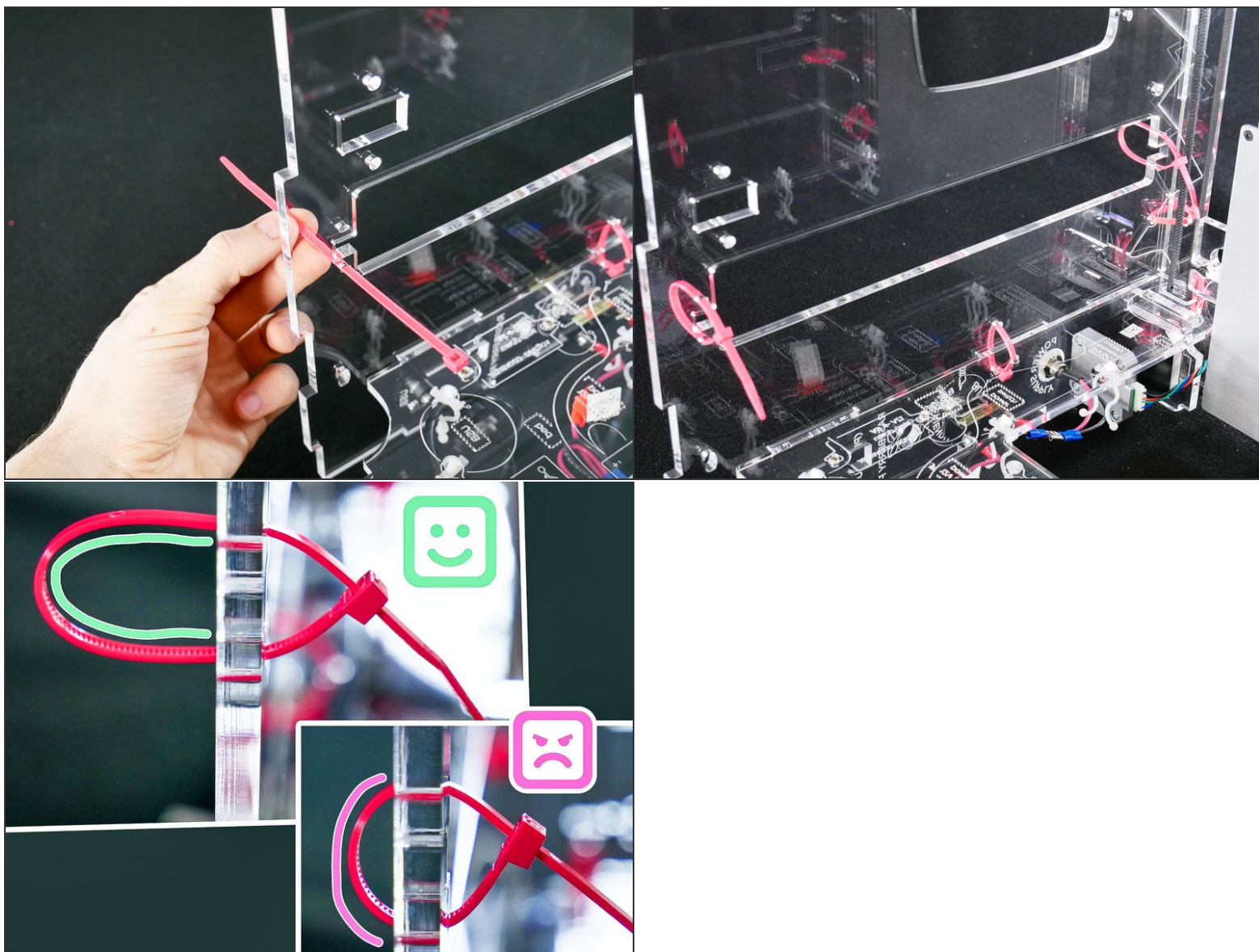
Step 2



Step 3

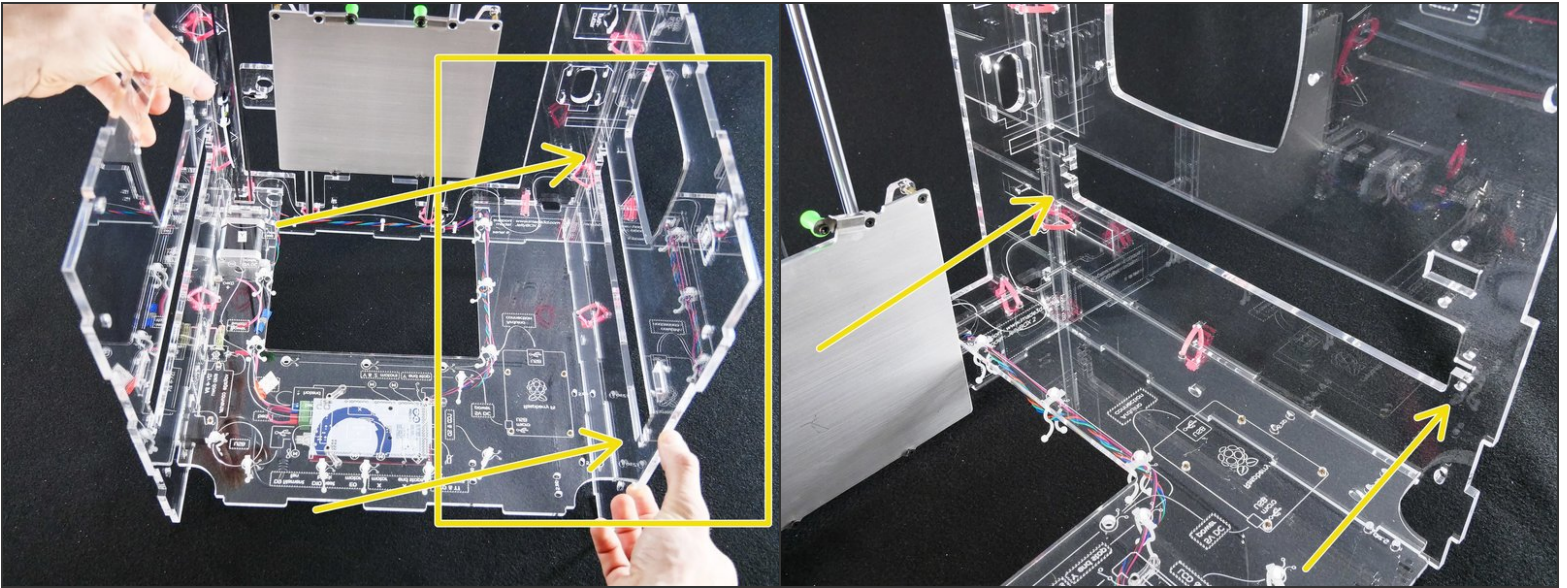


Step 4

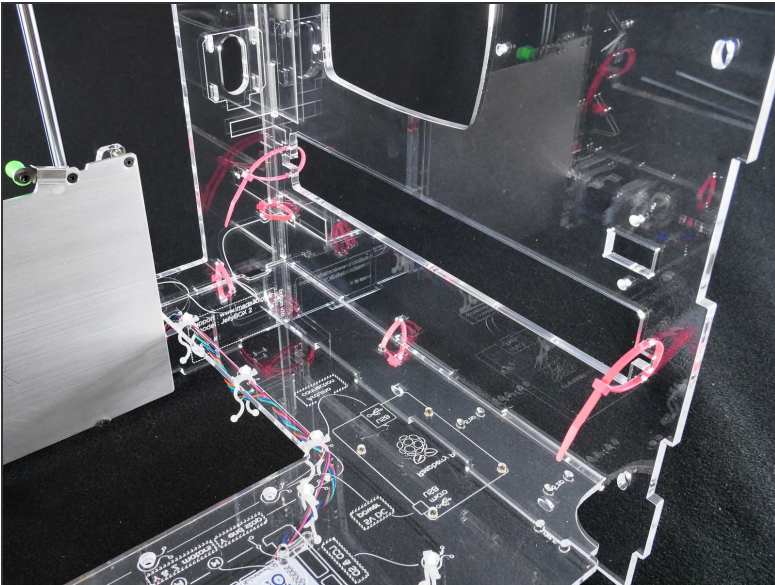


⚠️ Leave the zip ties loose.

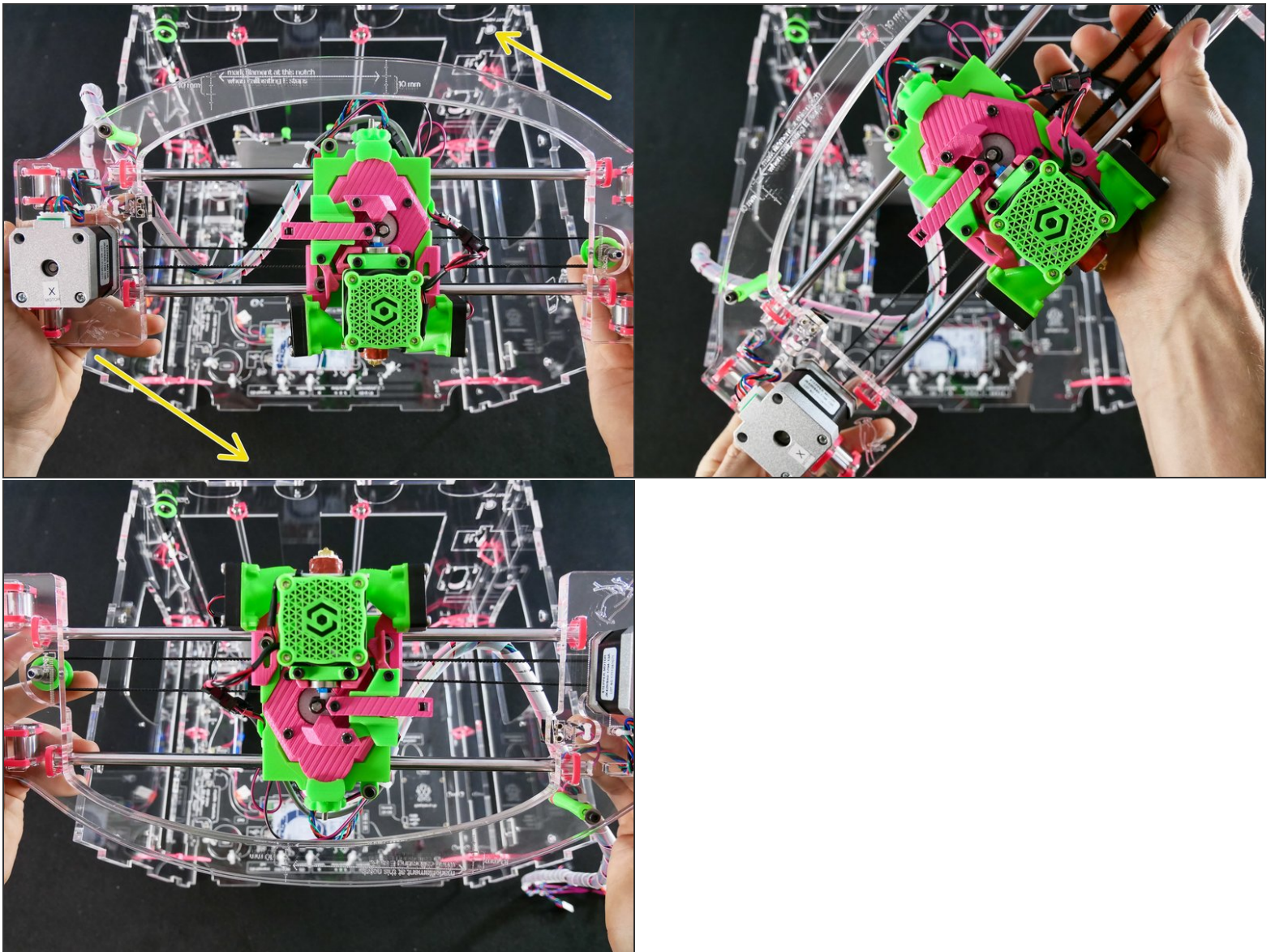
Step 5



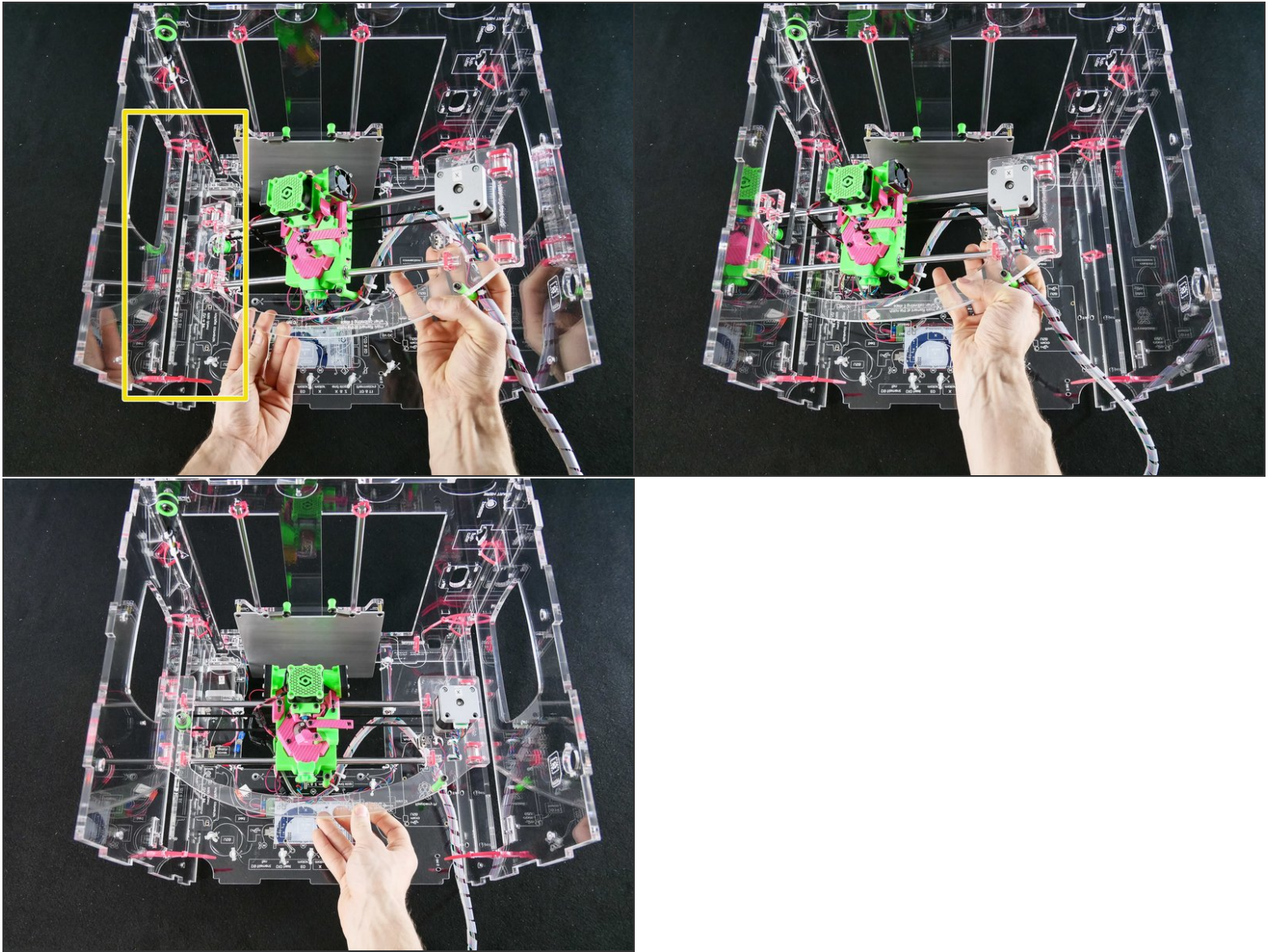
Step 6



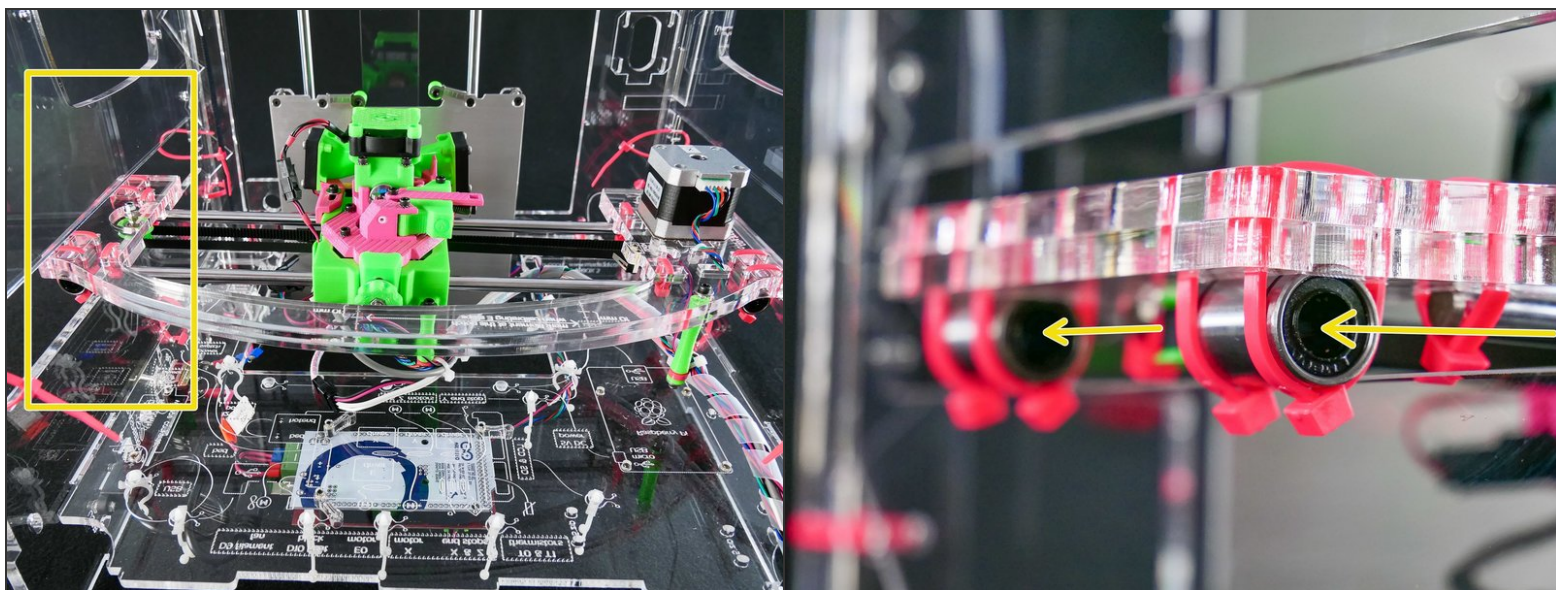
Step 7



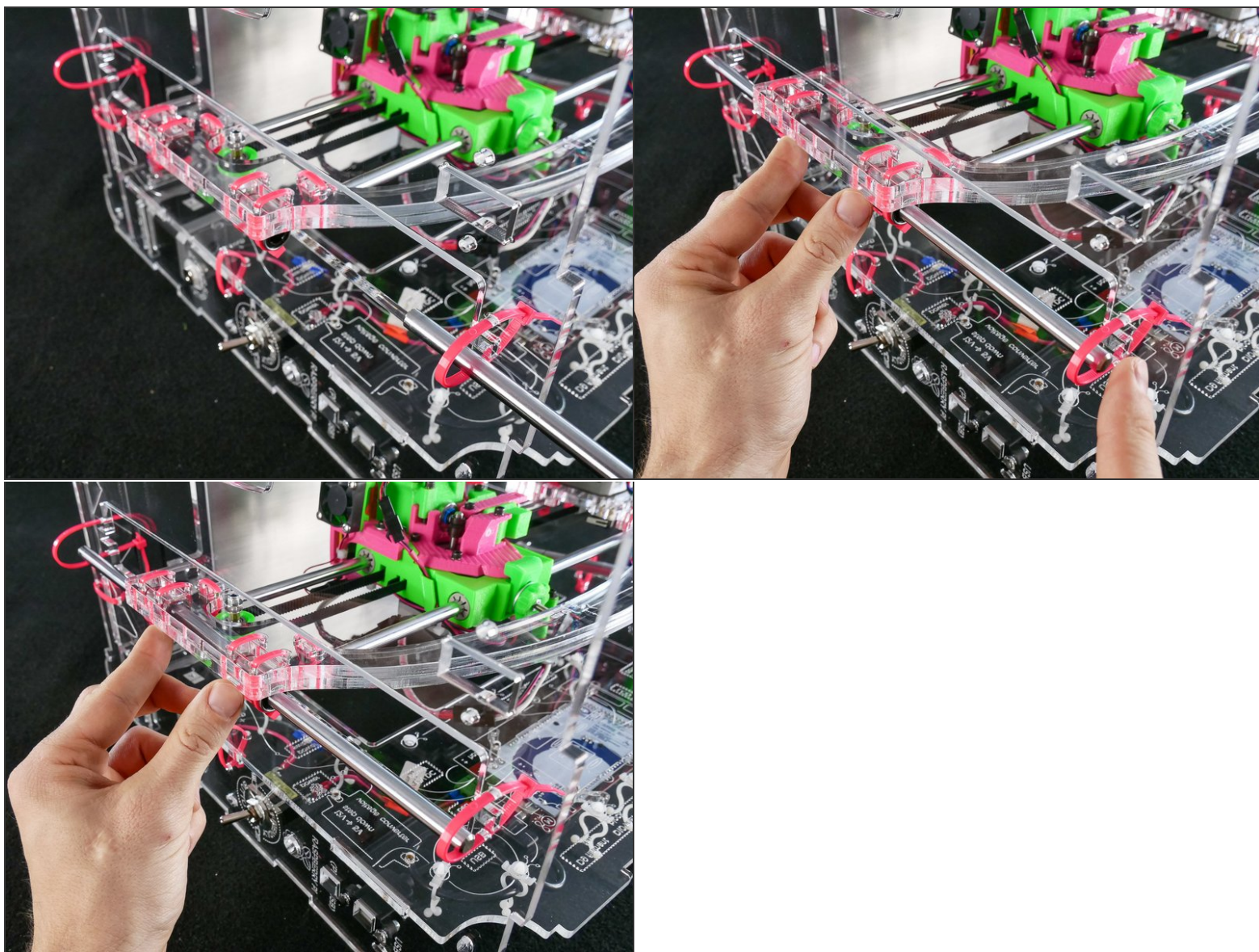
Step 8



Step 9

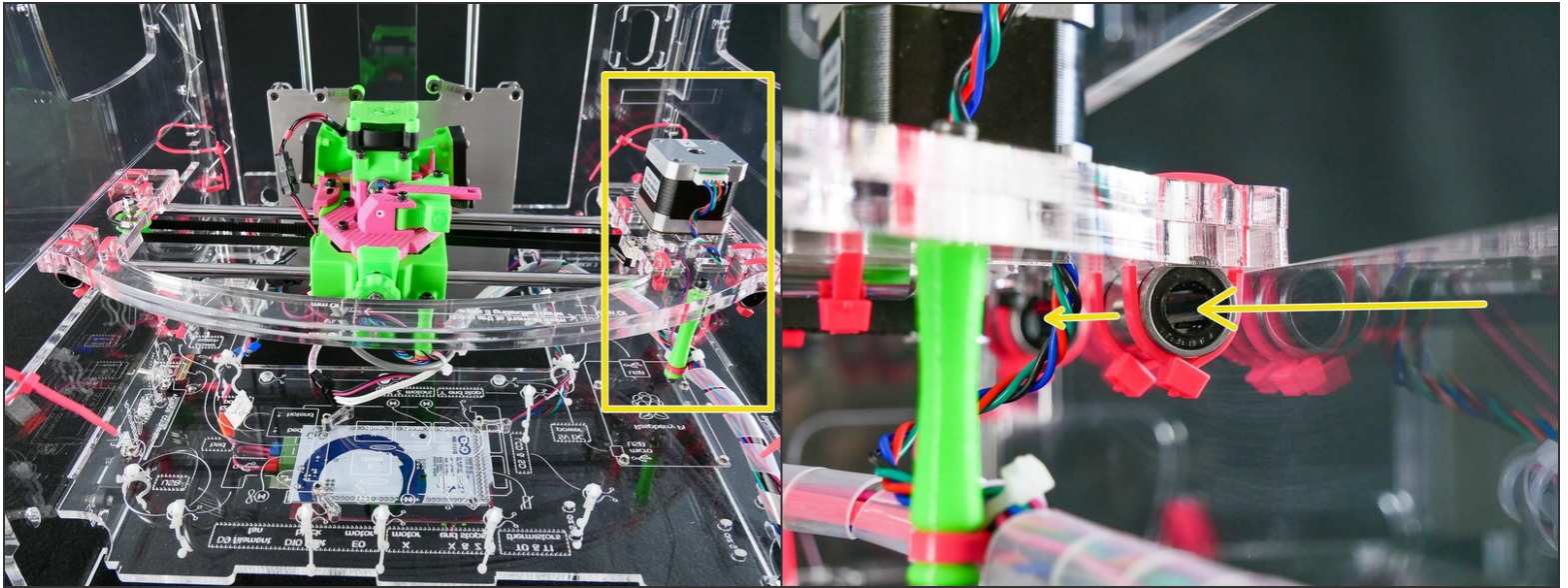


Step 10

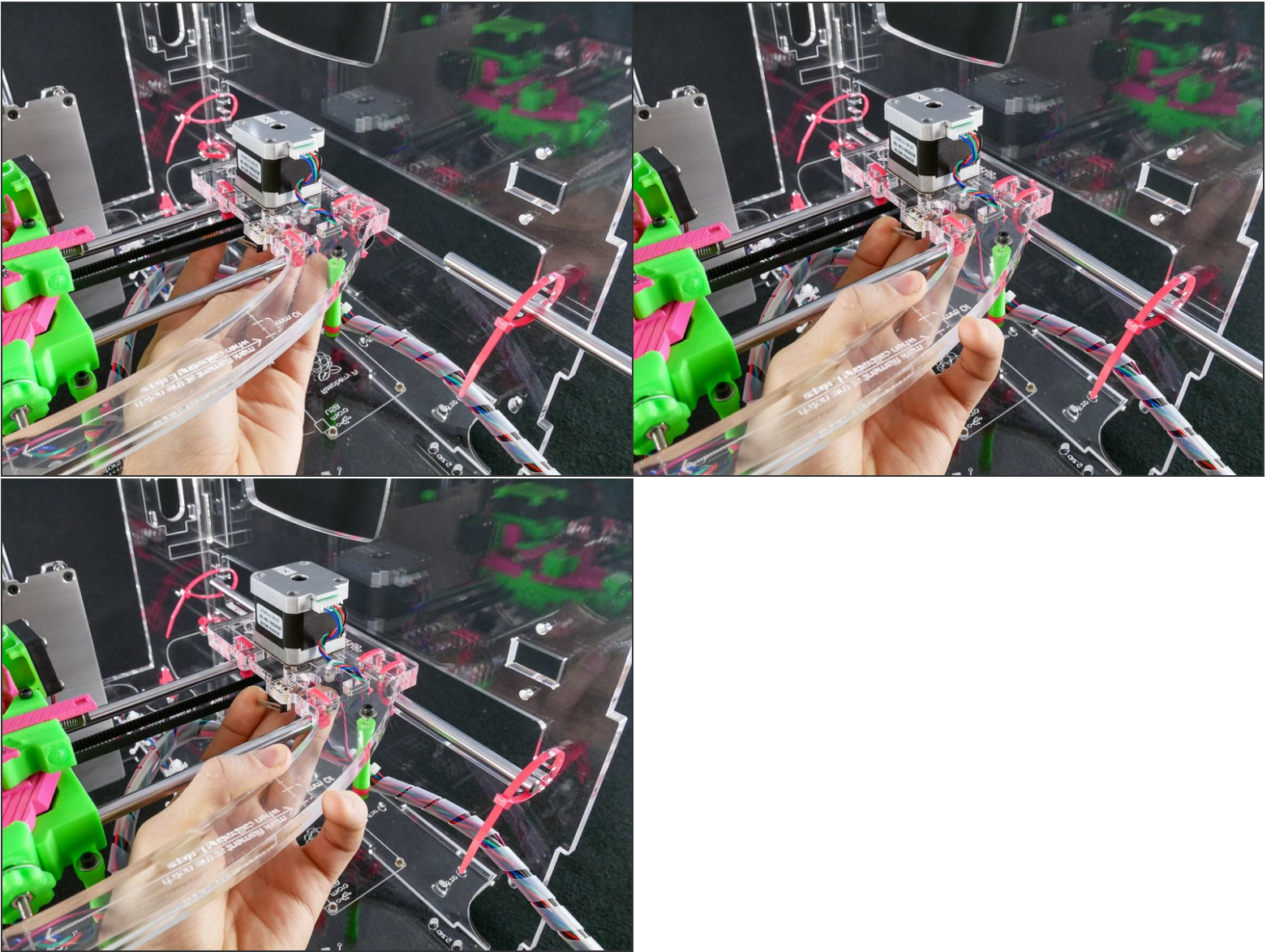


 Be gentle. Do not force the rod and keep it straight or you may damage the ball bearing by knocking some balls out.

Step 11



Step 12

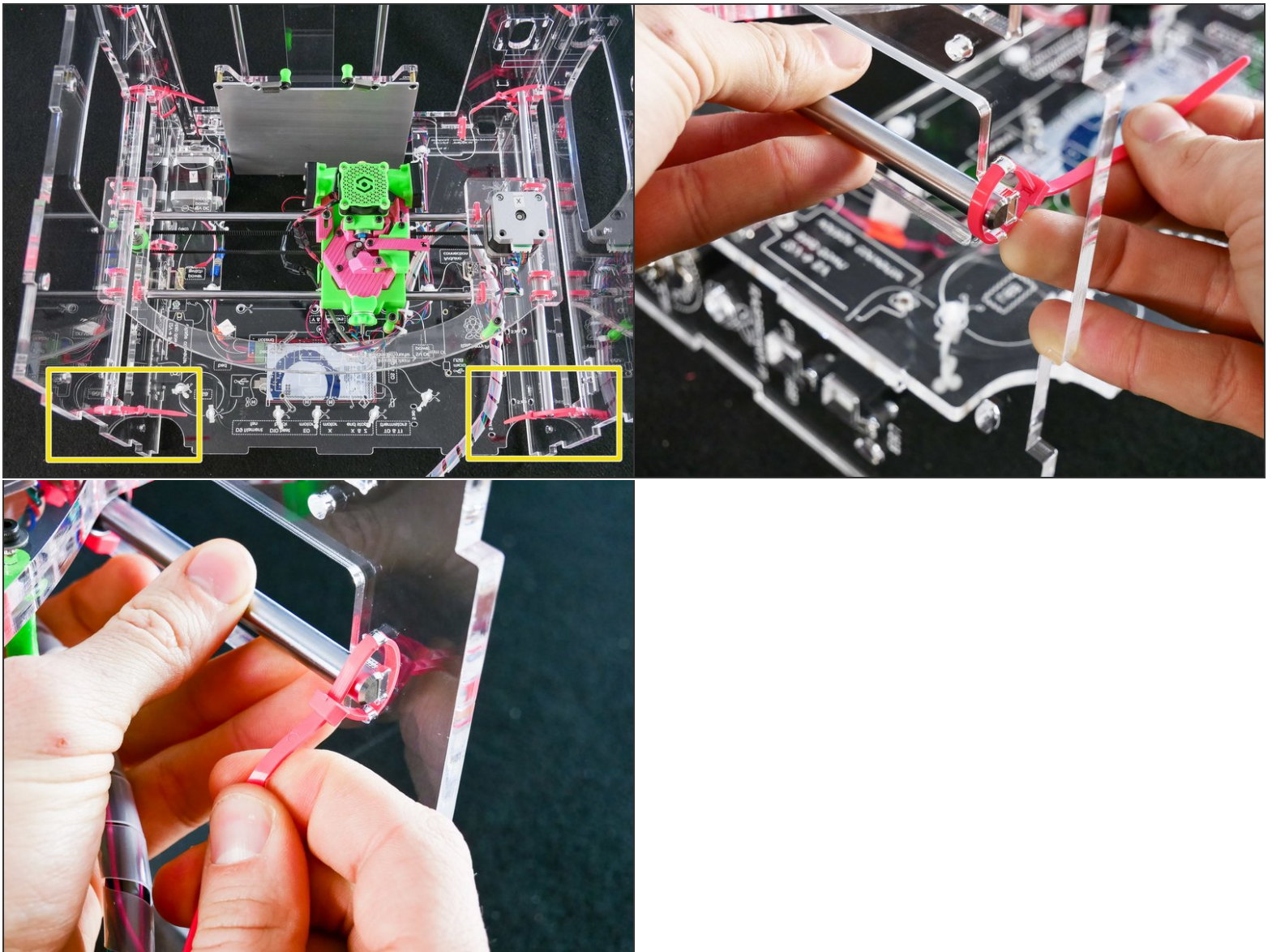


⚠ BE GENTLE. Do no force the rod and keep it straight or *you may damage the inside of the bearing.*

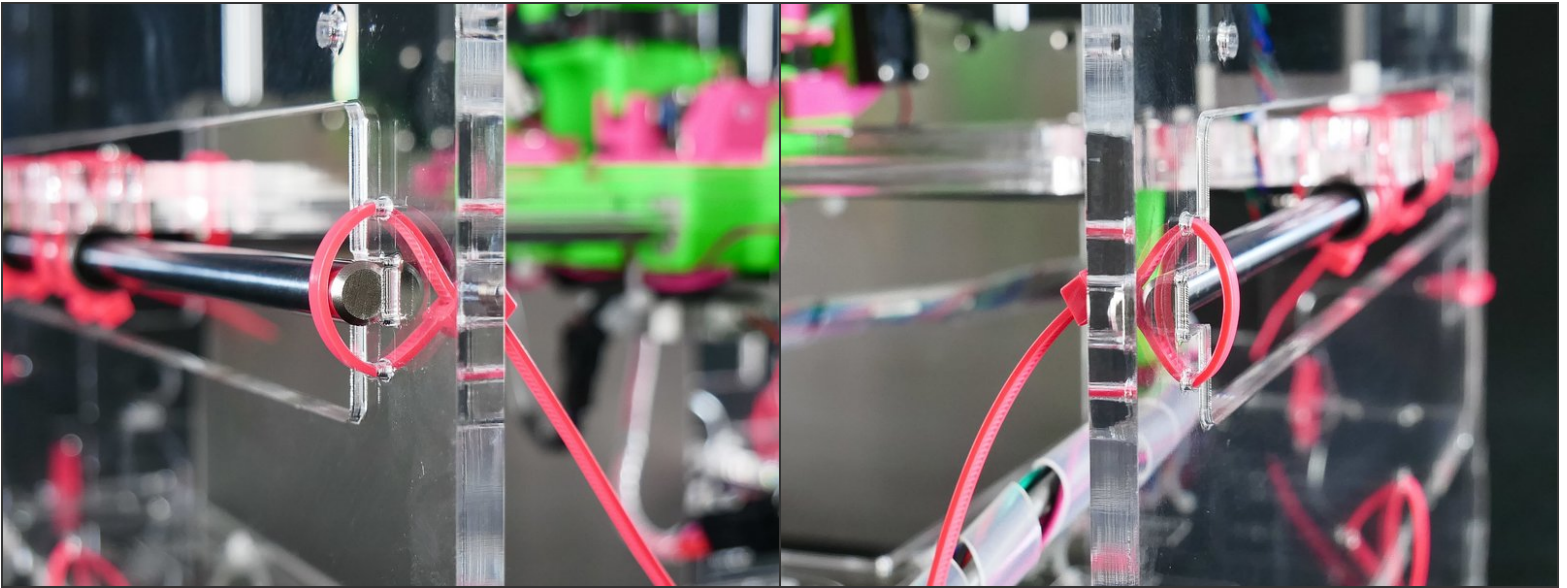
Step 13

- We highly recommend you **scroll ahead** and **look at the whole procedure** of zip tying the x assembly.
- The procedure is quite simple, but it's hard to understand if you look image-by-image.
- ① We'll first tighten both front zip ties, and only then both zip ties in the back.

Step 14

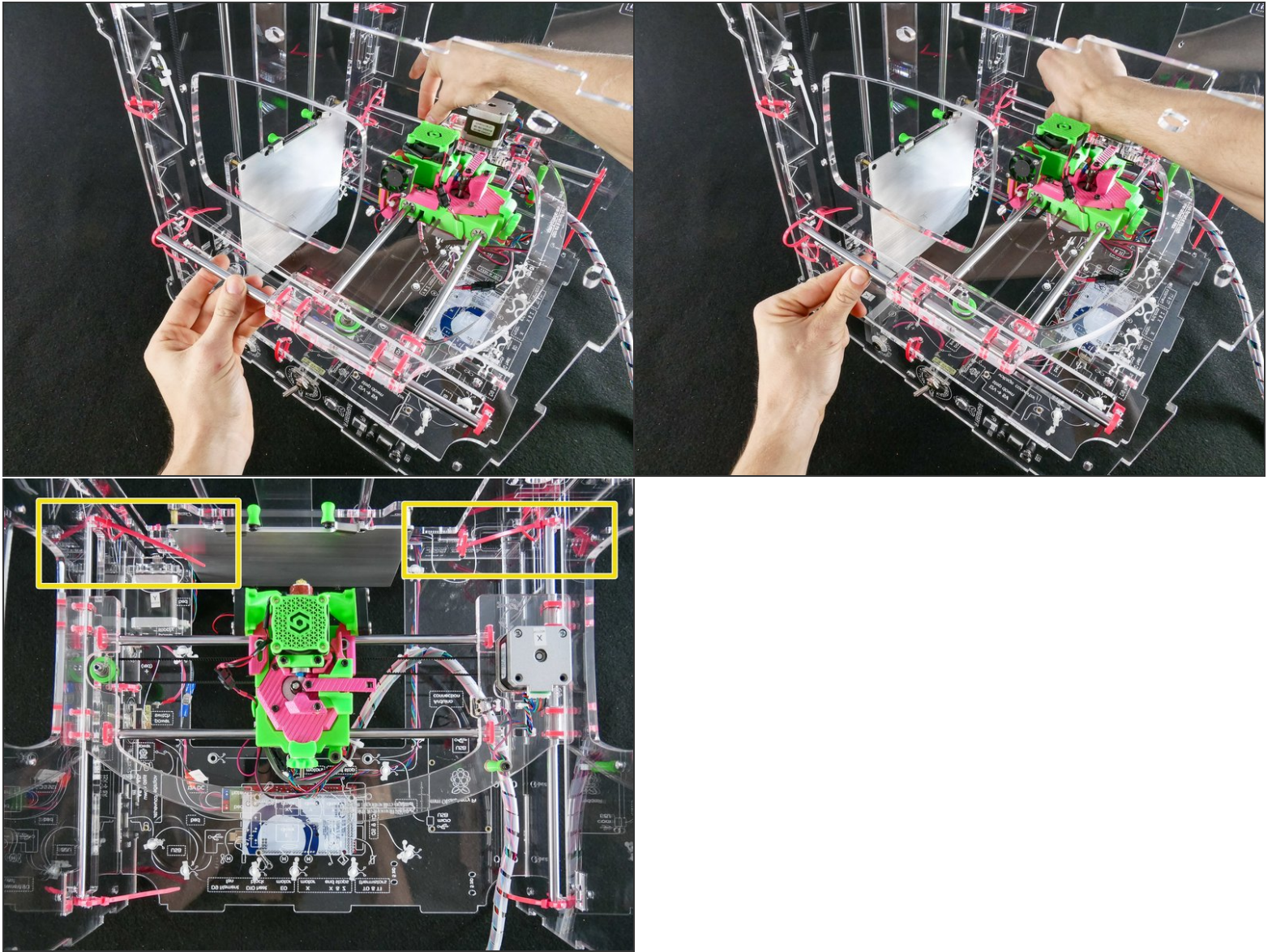


Step 15



☞ Note that on the **left** the rod is **outside**, while on the **right** the rod is **inside**.

Step 16

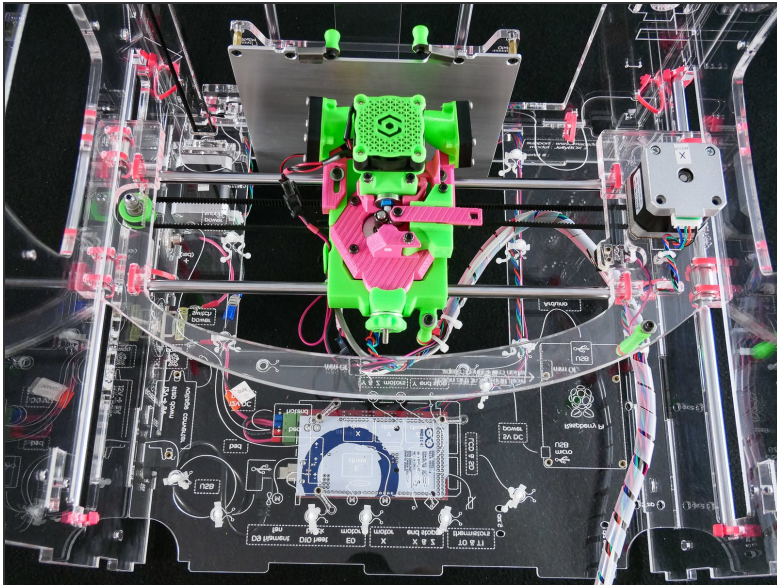


- Push the rods in place and tighten the back zip ties.

Step 17

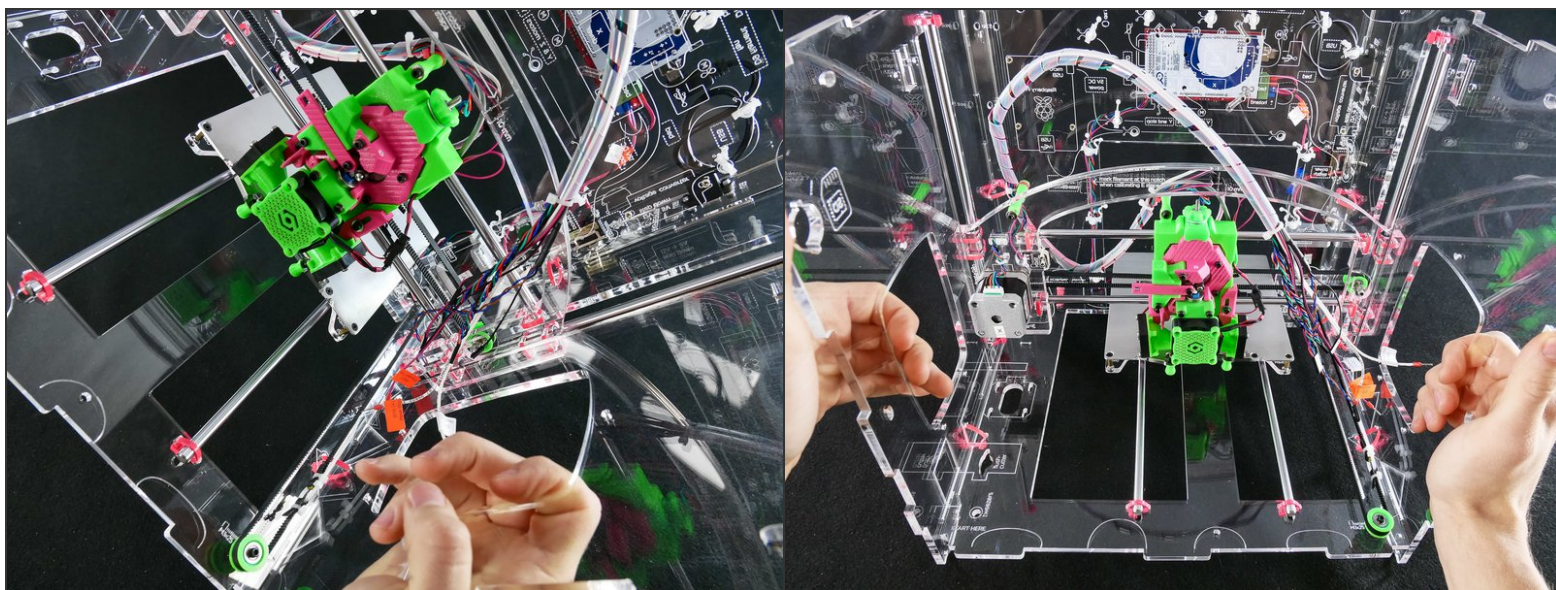


Step 18 — Looking good!



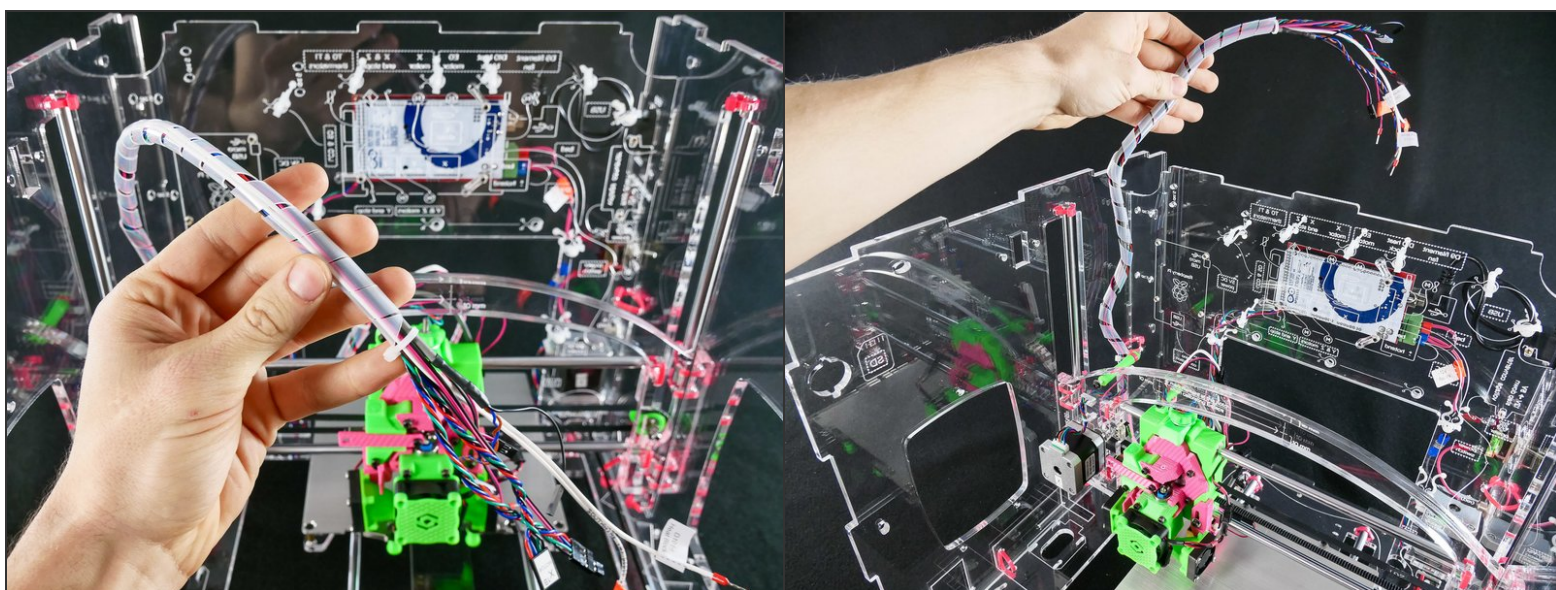
- The X assembly is inserted.

Step 19

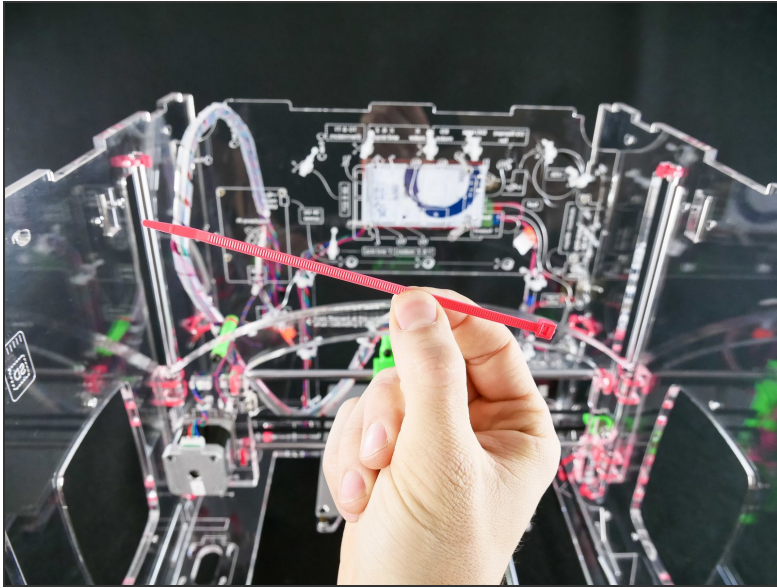


- Turn the JellyBOX from its back into *normal position*.

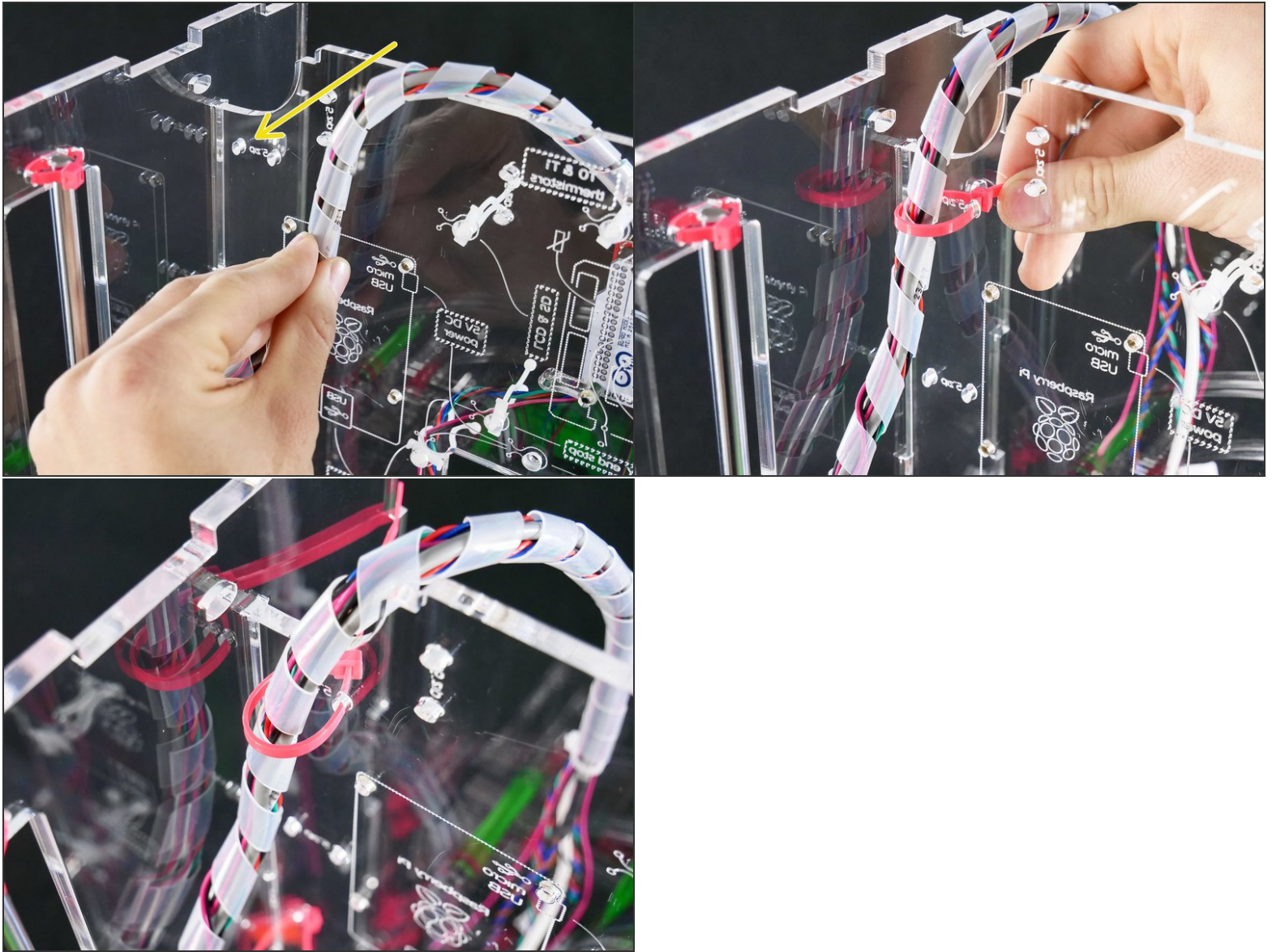
Step 20



Step 21



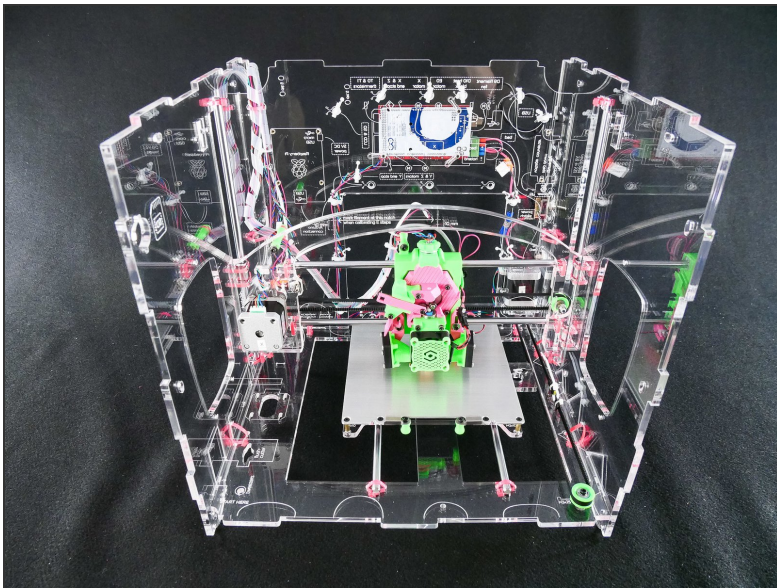
Step 22



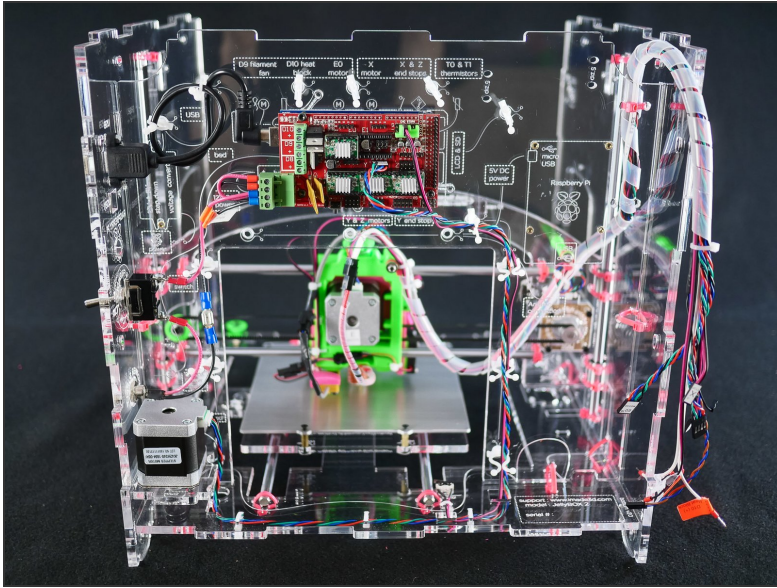
⚠ Leave the zip tie **loose**.

Step 23 — ► Video: Adjust the X Wire Harness Folding (50s)

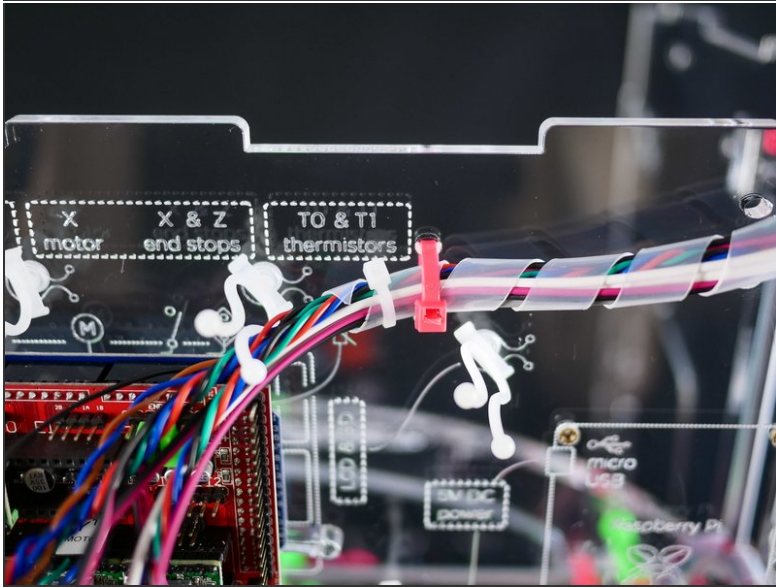
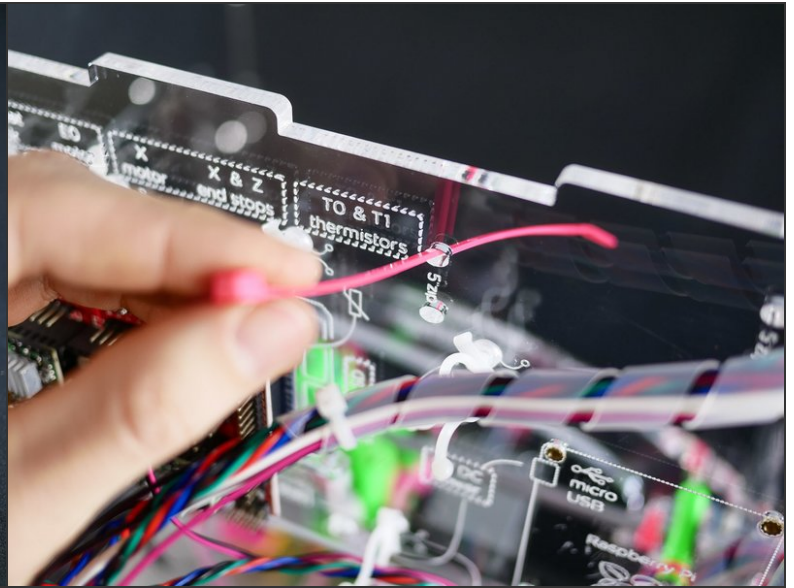
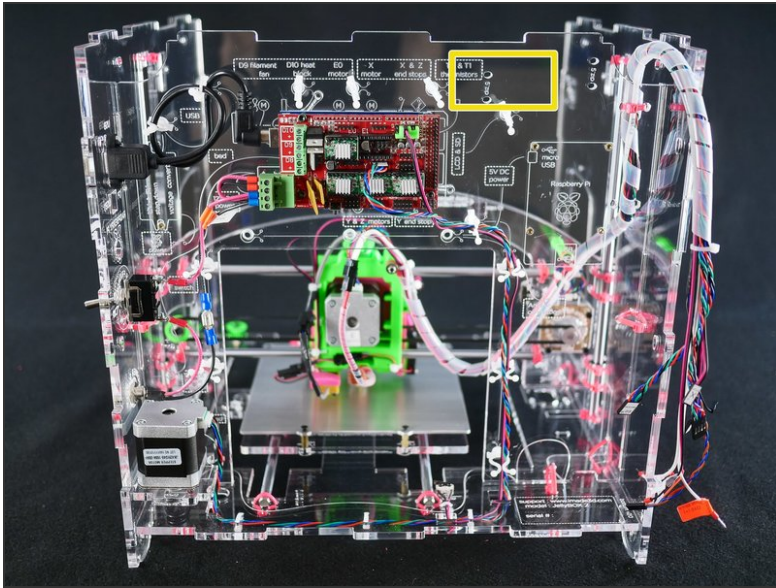
- ► Video: Adjust the X Wire Harness Folding (50s)
- Adjust the mounting point as needed so that the harness is folding nicely and predictably.

Step 24 — Looking Good!

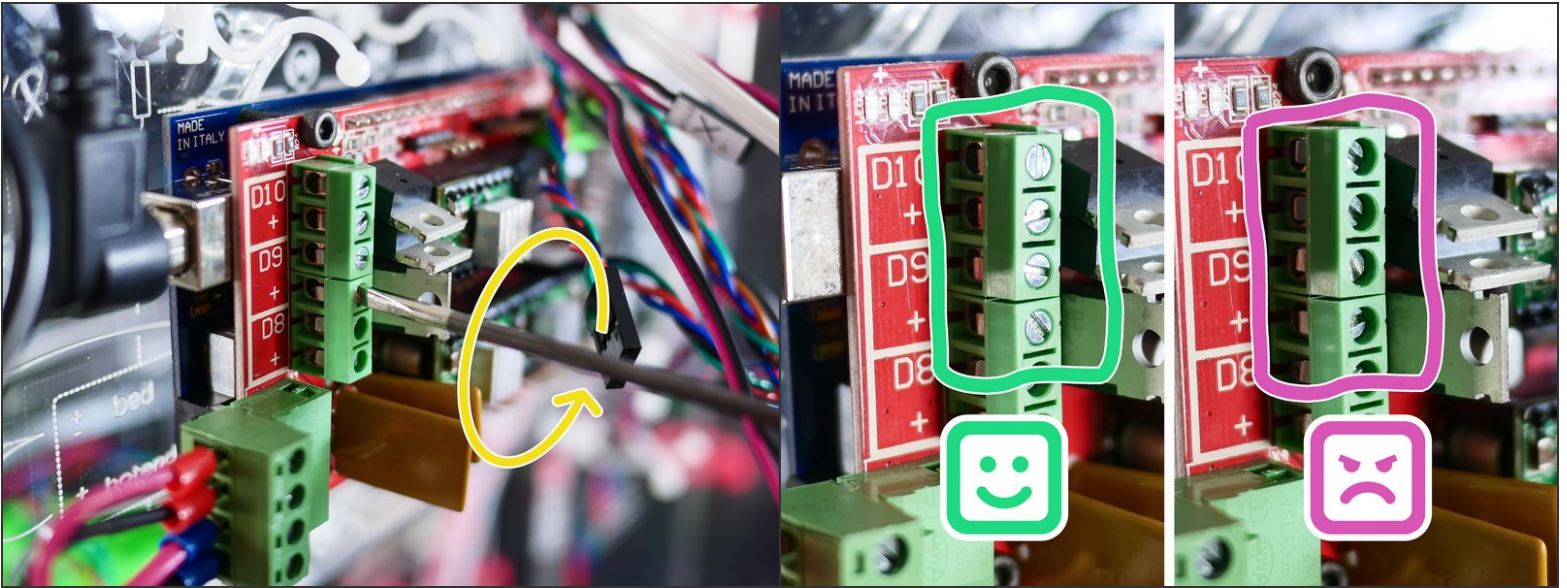
Step 25 — ↪ Wire up the X Assembly



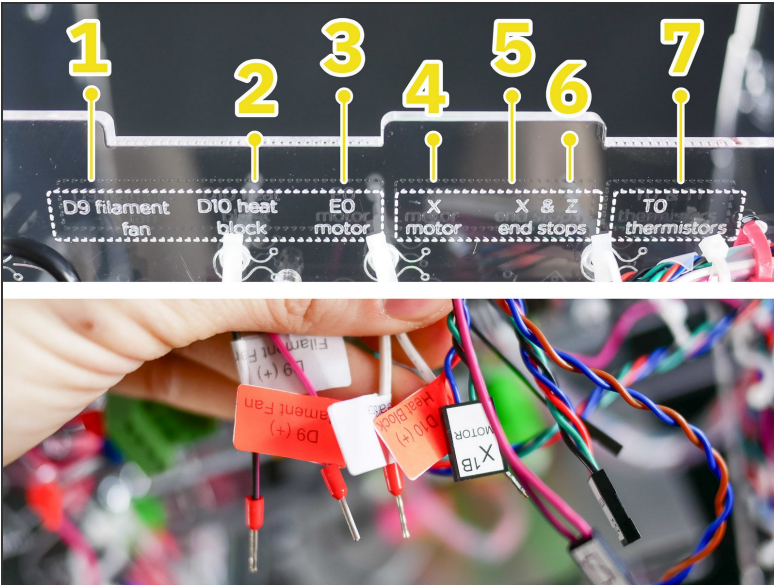
Step 26



Step 27

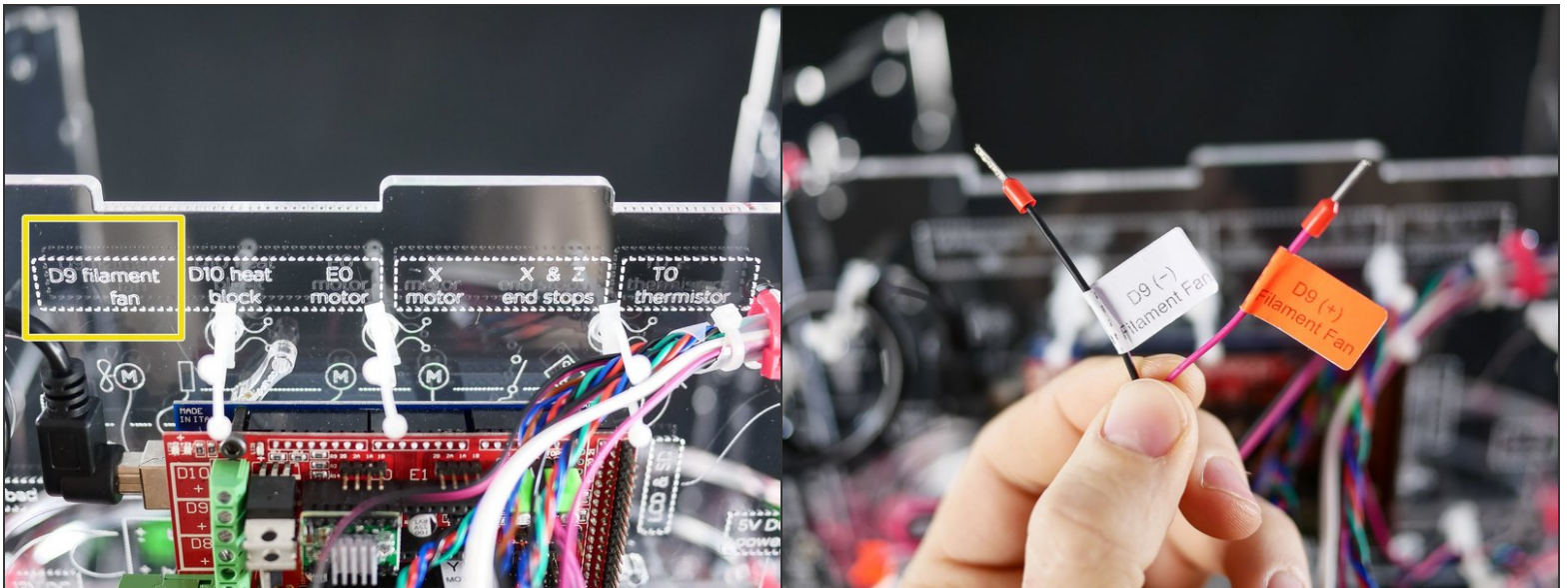


Step 28

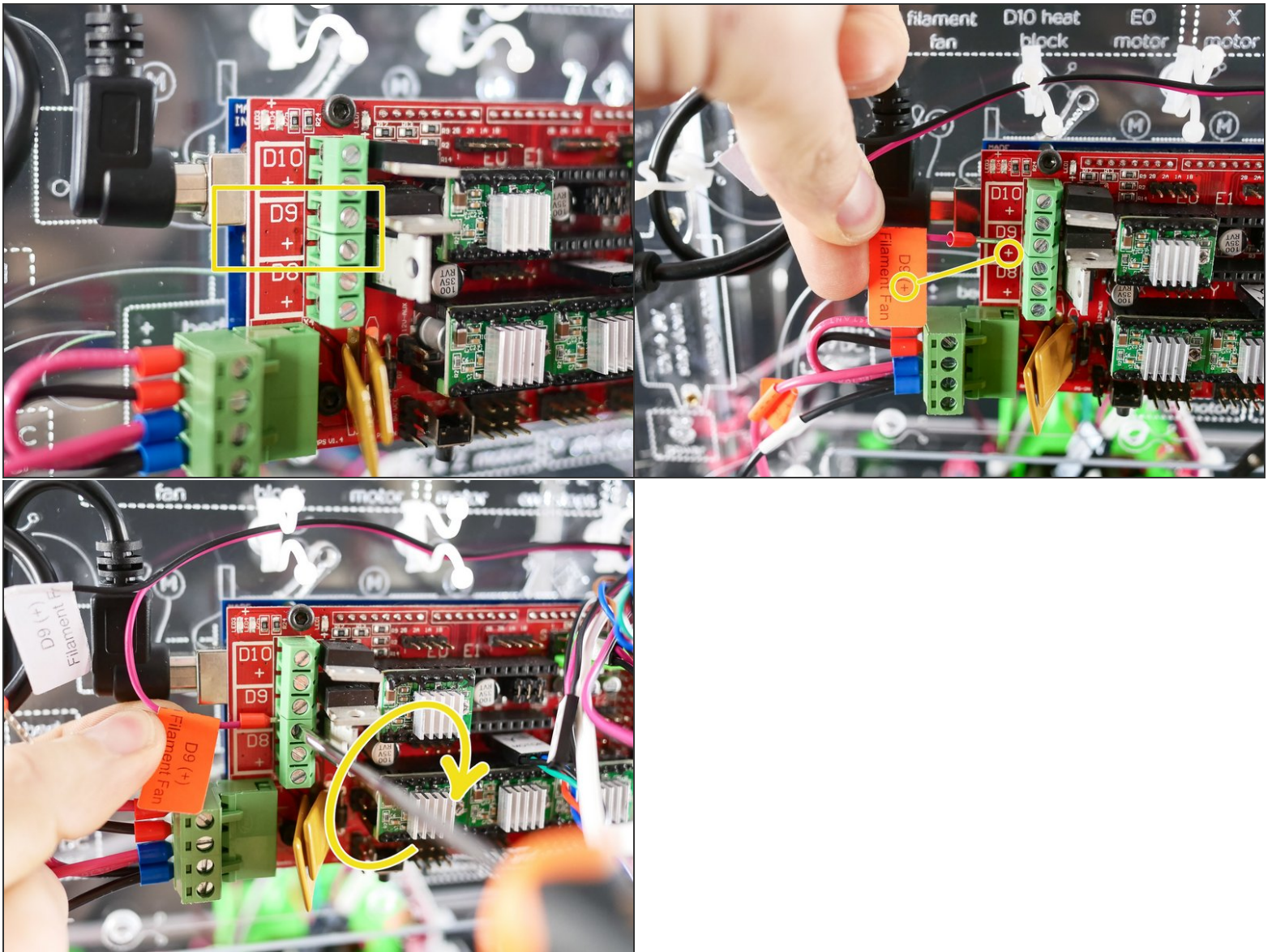


- In short, connect all the wires according to their labels. We'll start on the left.

Step 29

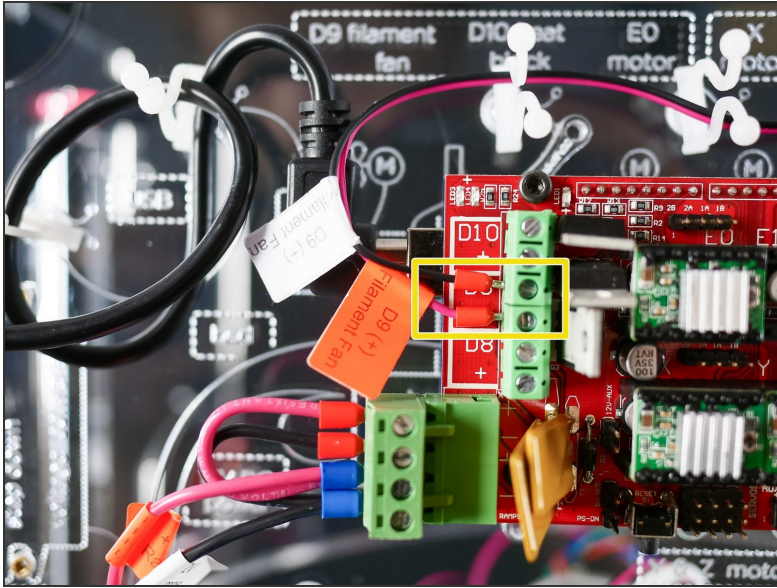


Step 30



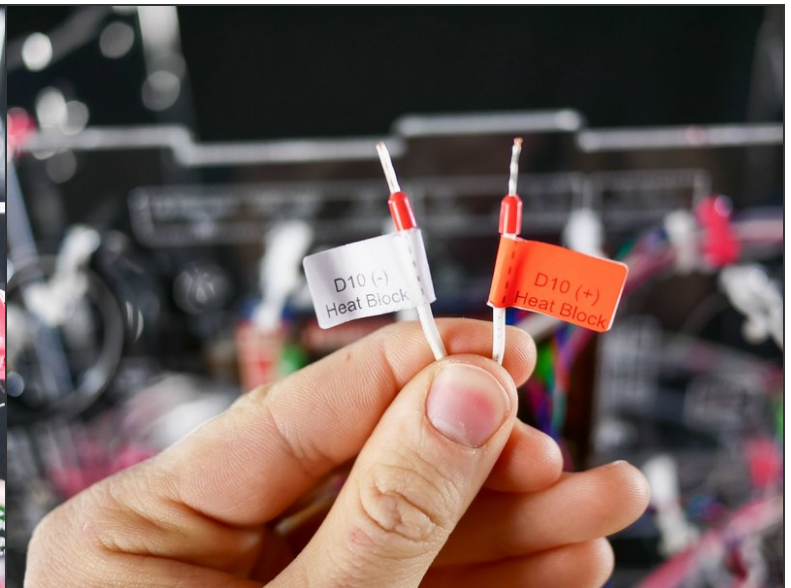
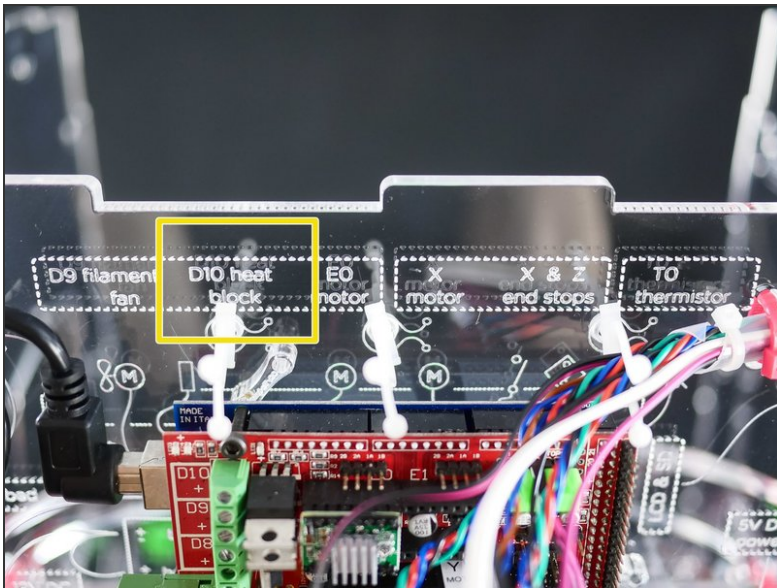
⚠ Make sure to match **plus with plus...**

Step 31

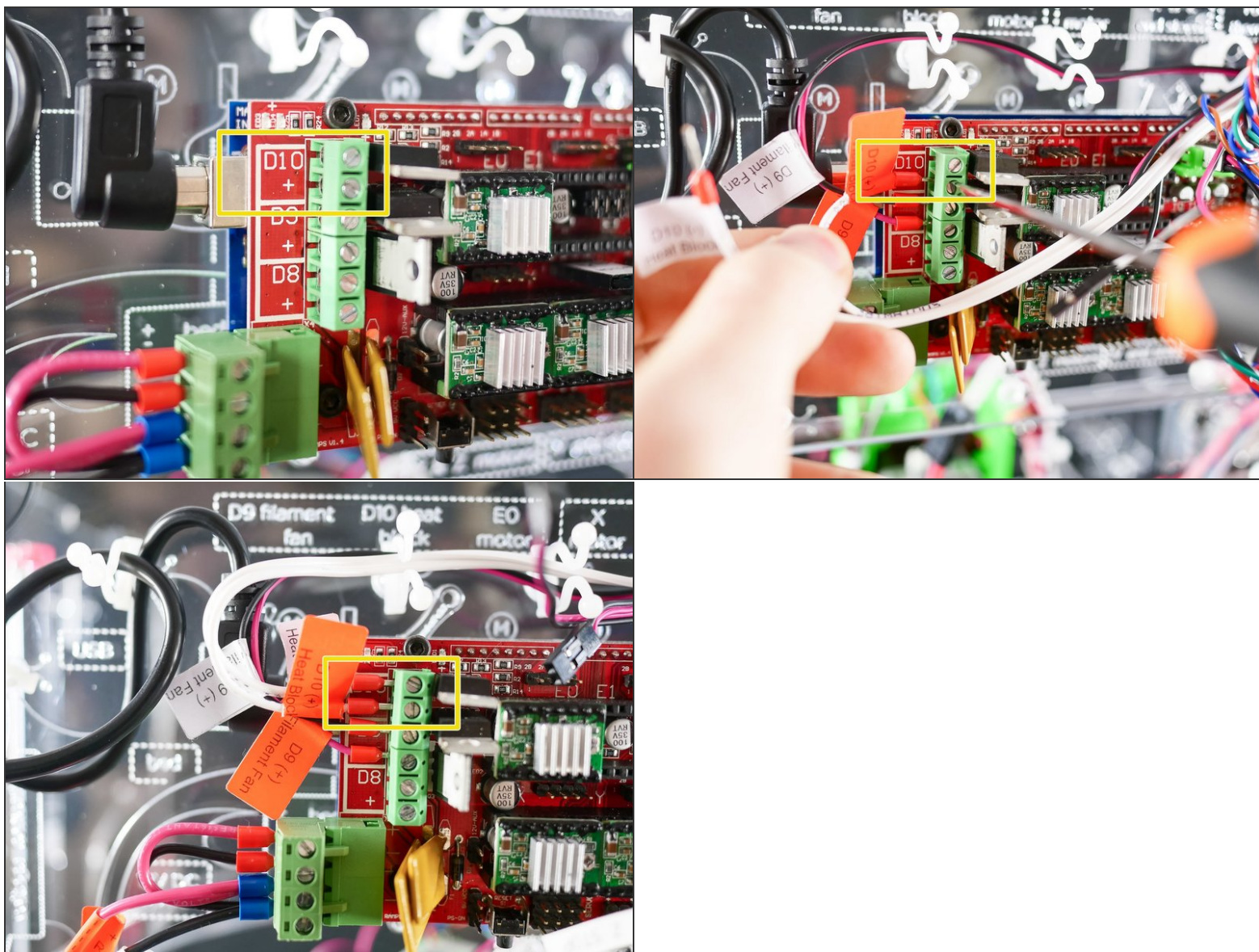


⚠ ... and minus with minus.

Step 32

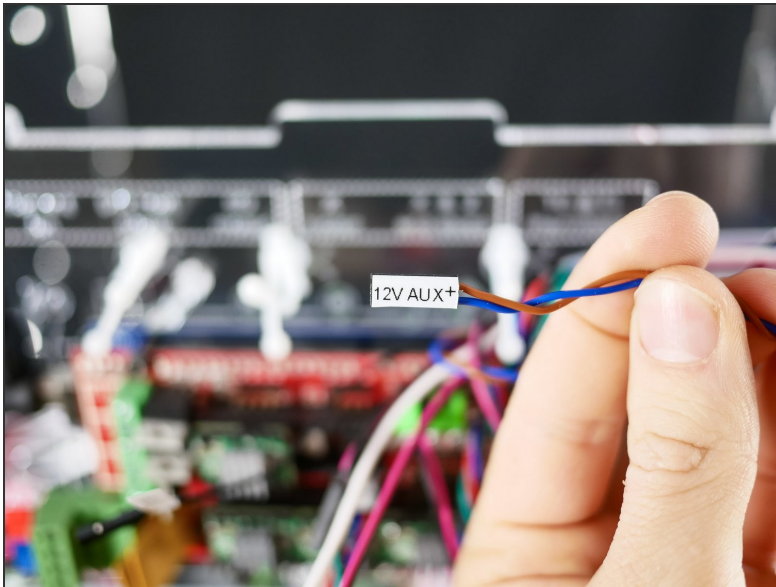


Step 33



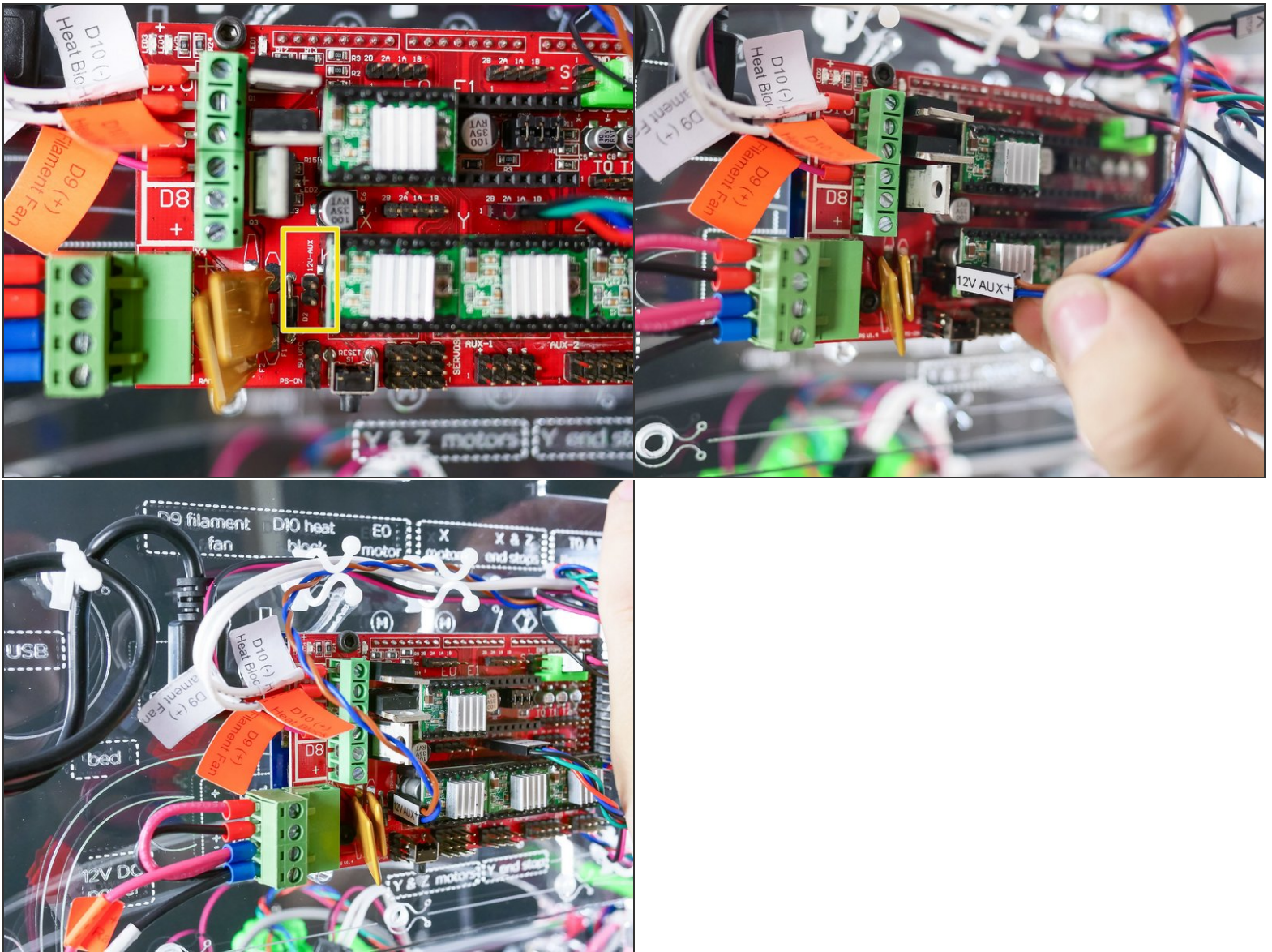
⚠ Make sure to match plus with plus and minus with minus.

Step 34

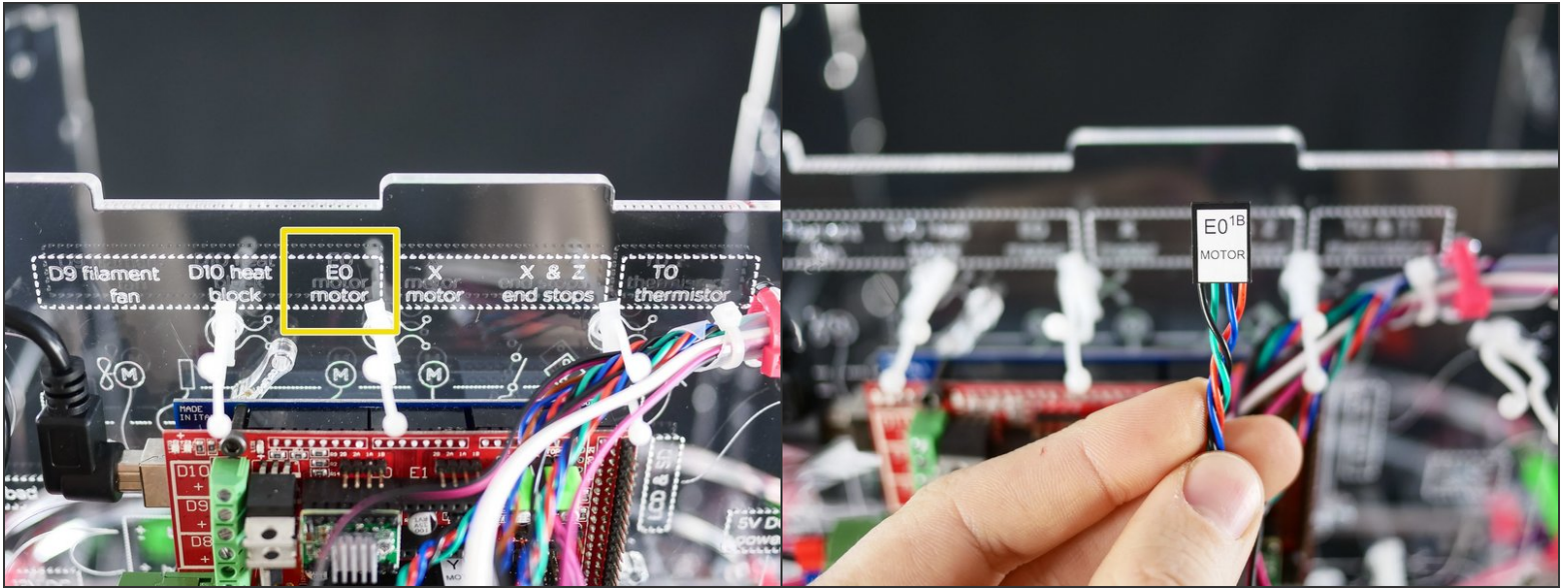


i This 12V line powers up the Z Probe and the Hotend fan.

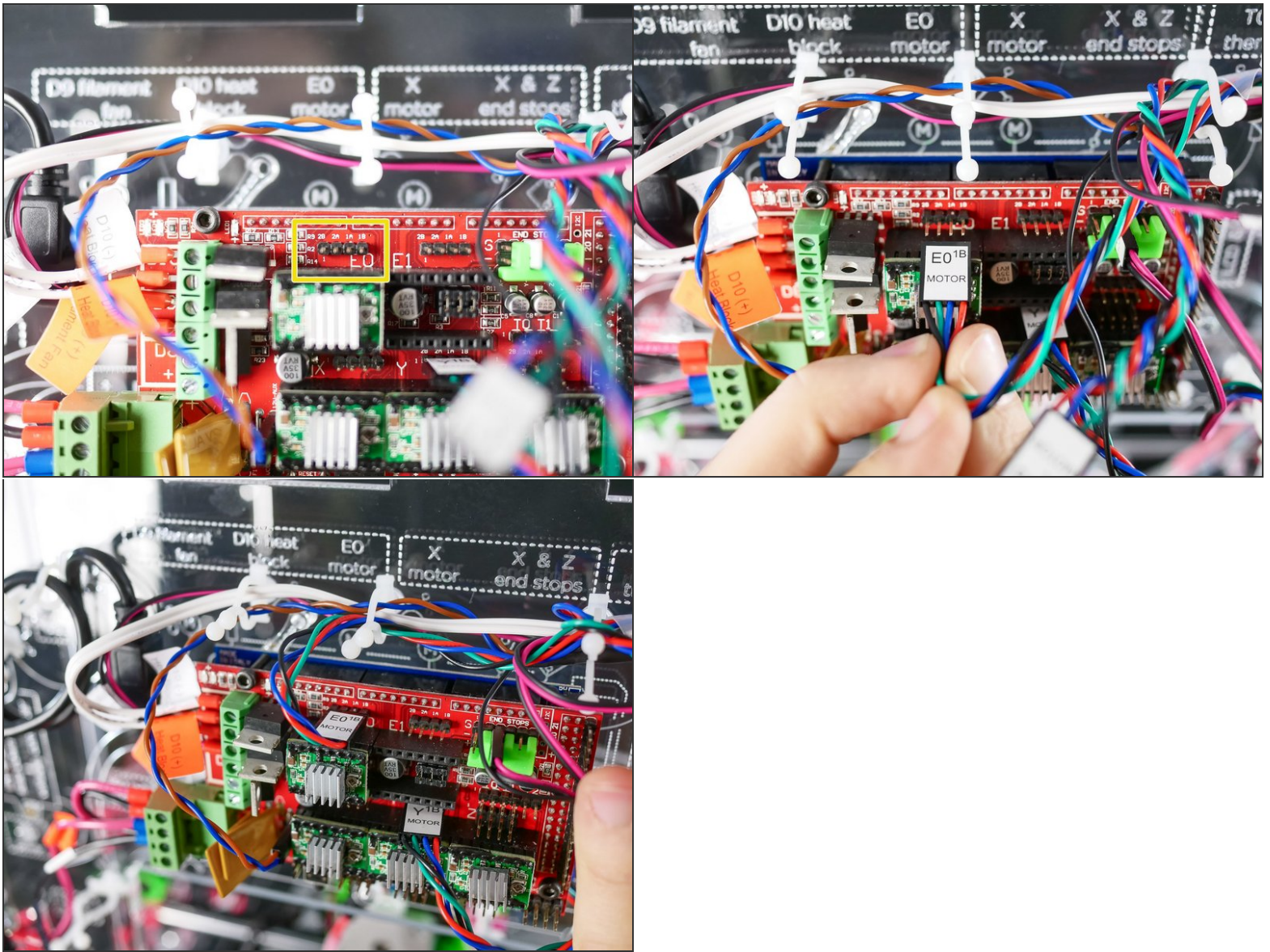
Step 35



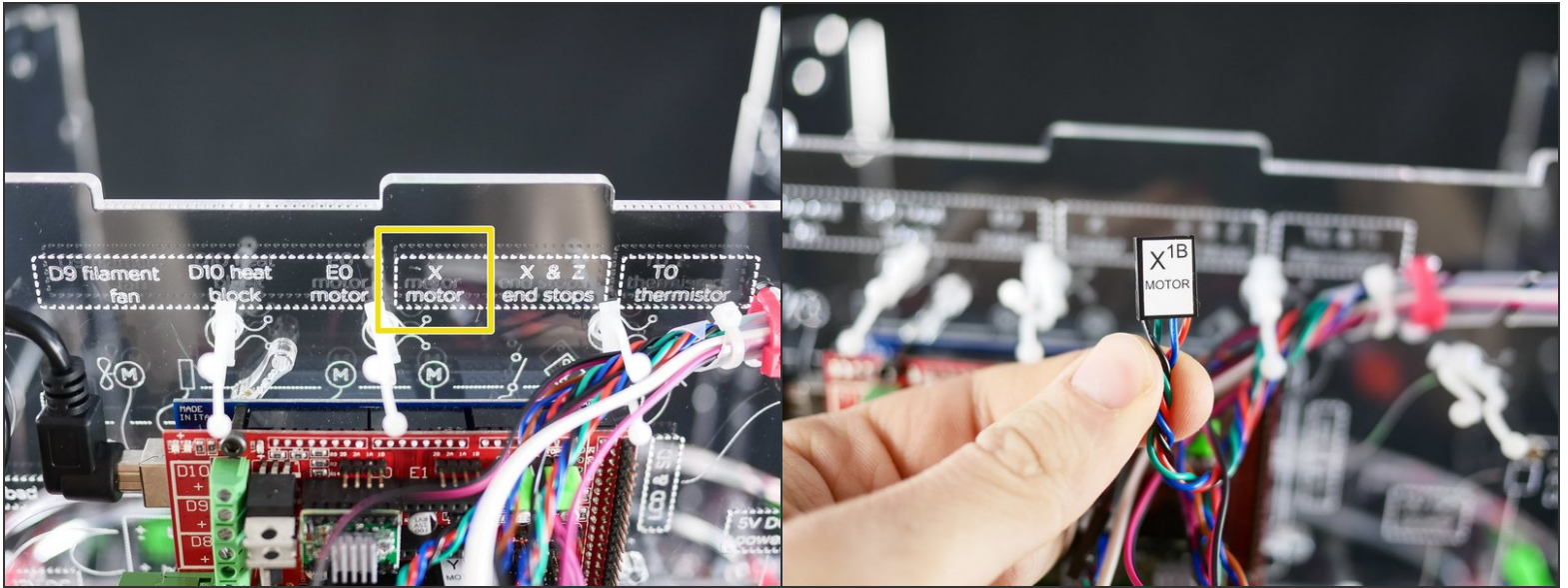
Step 36



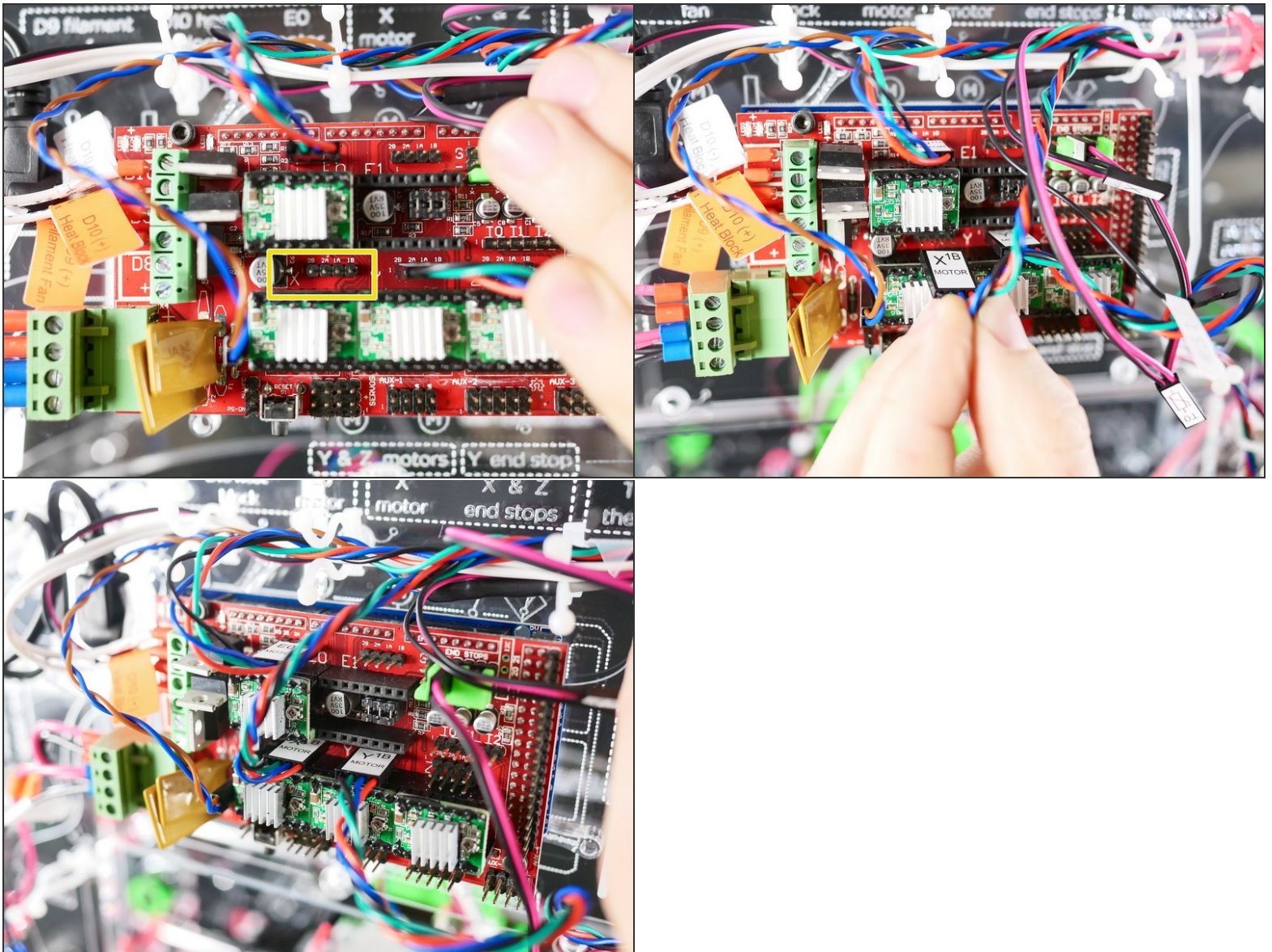
Step 37



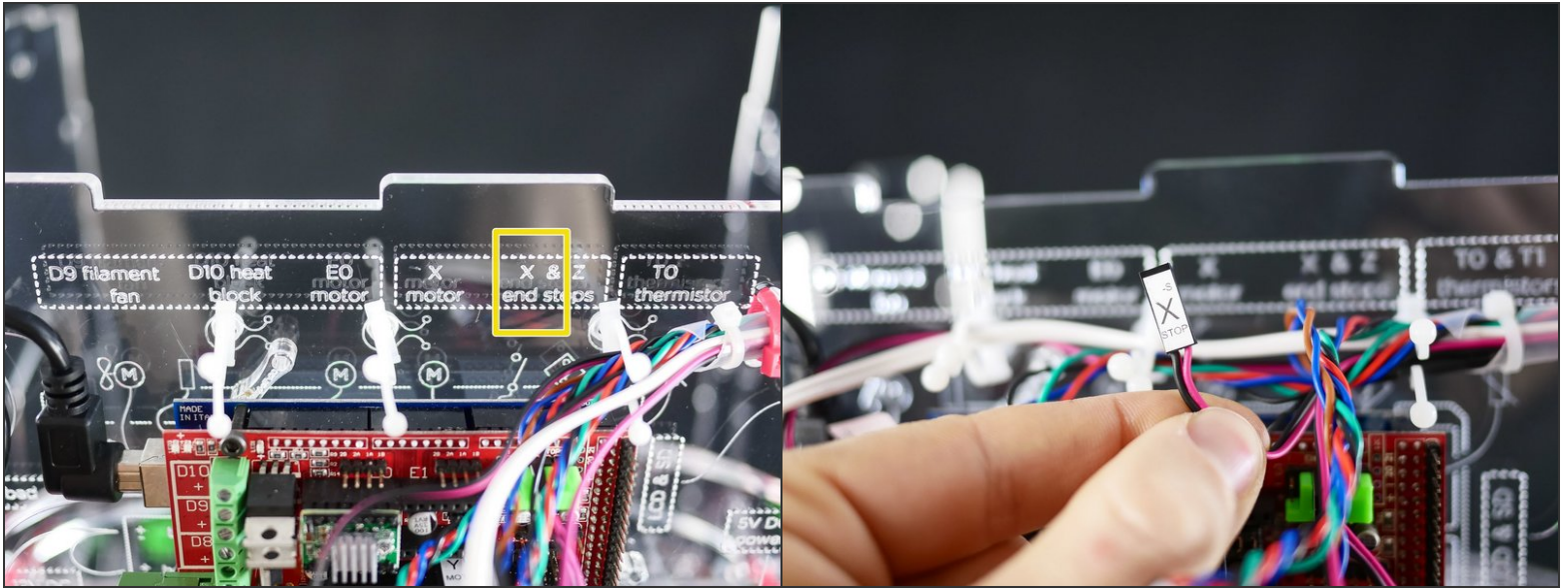
Step 38



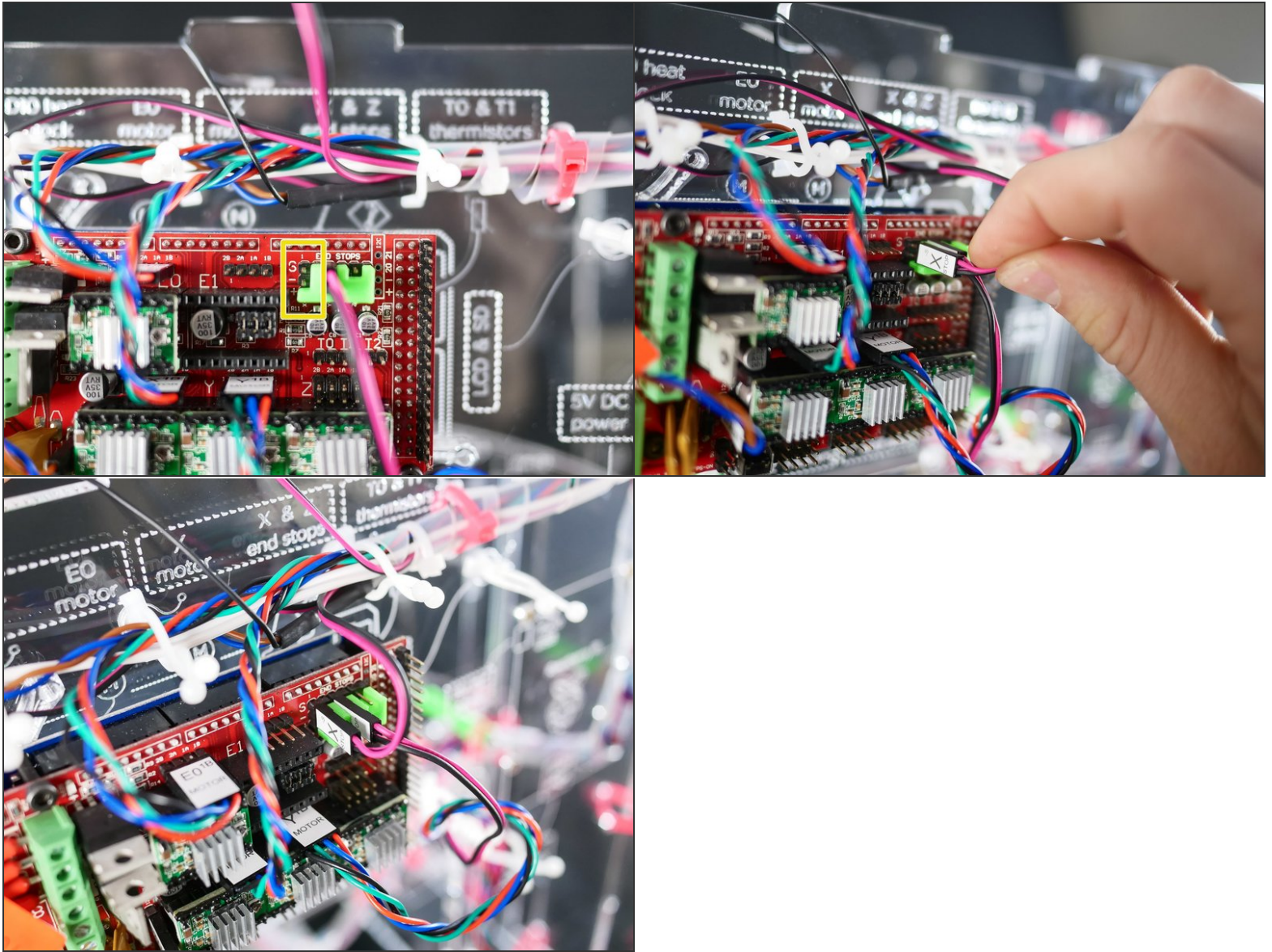
Step 39



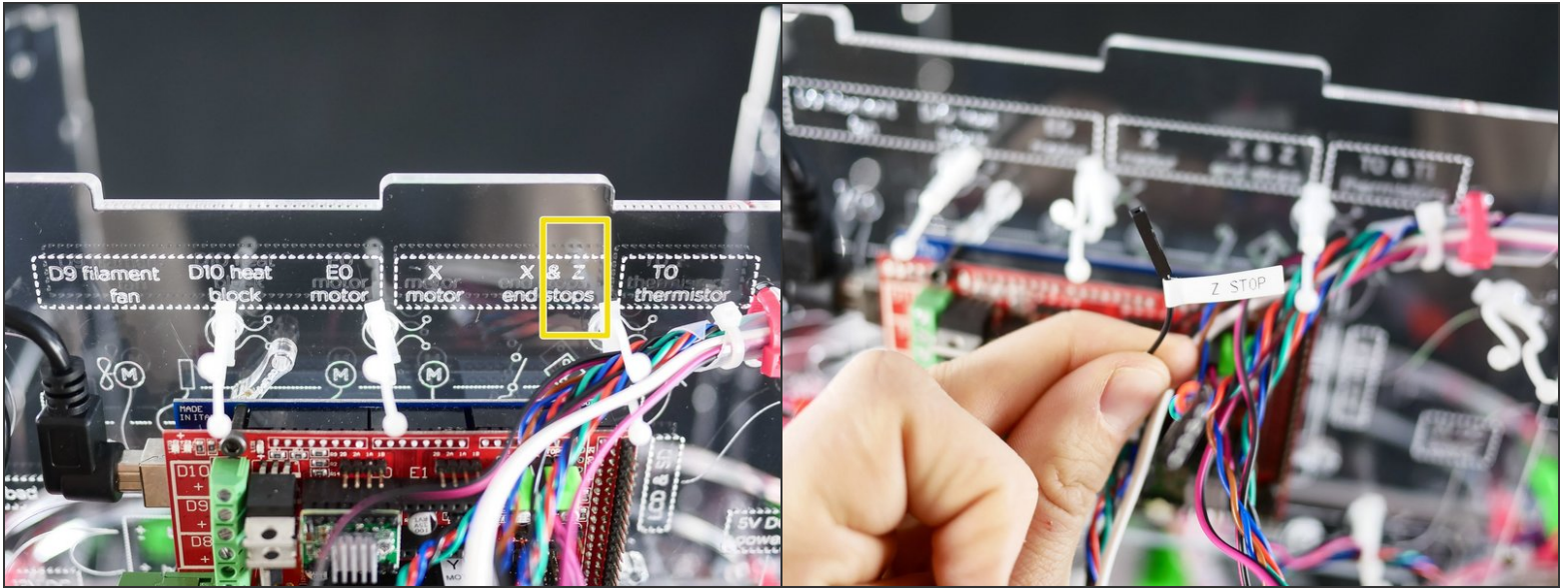
Step 40



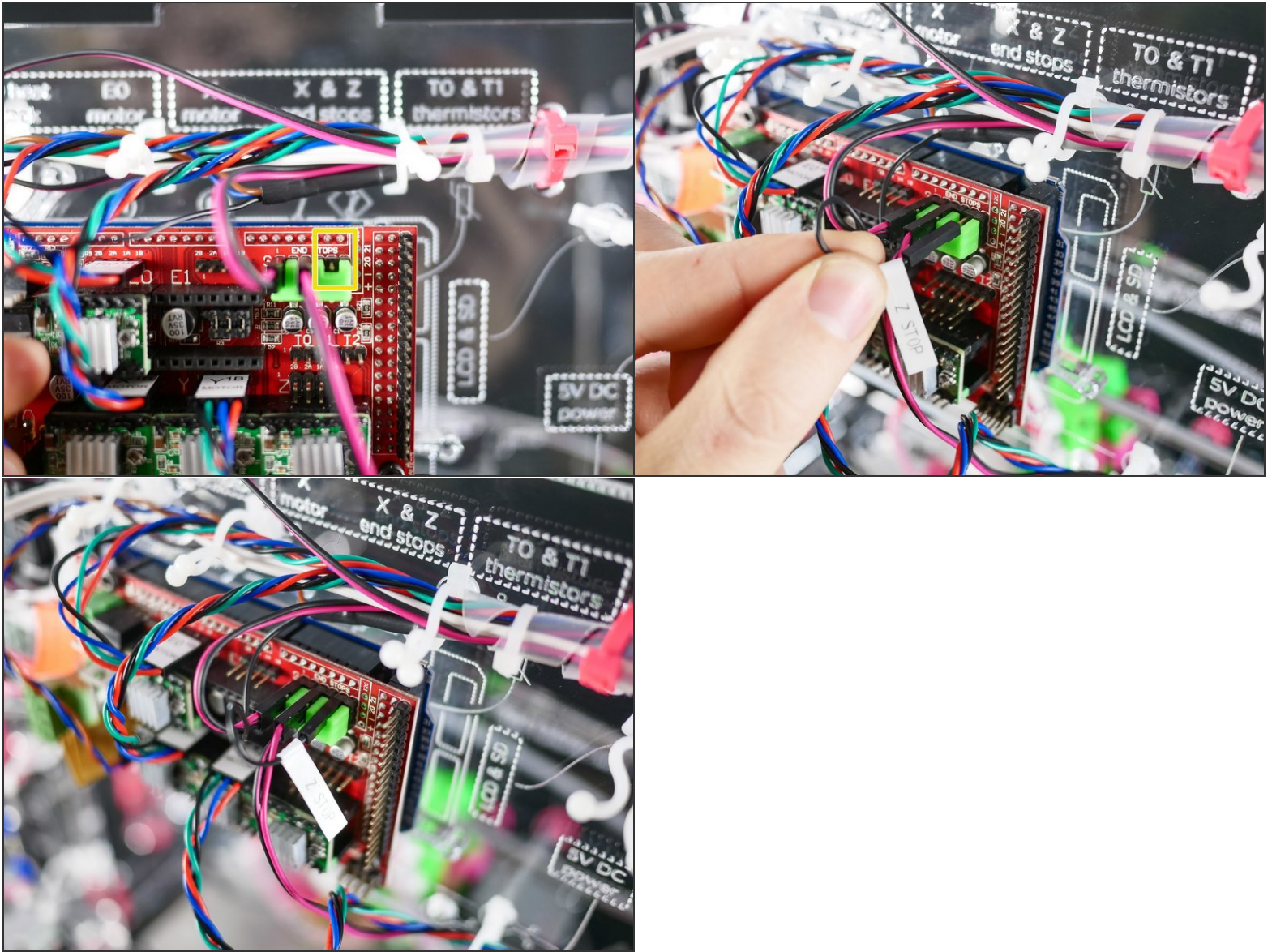
Step 41



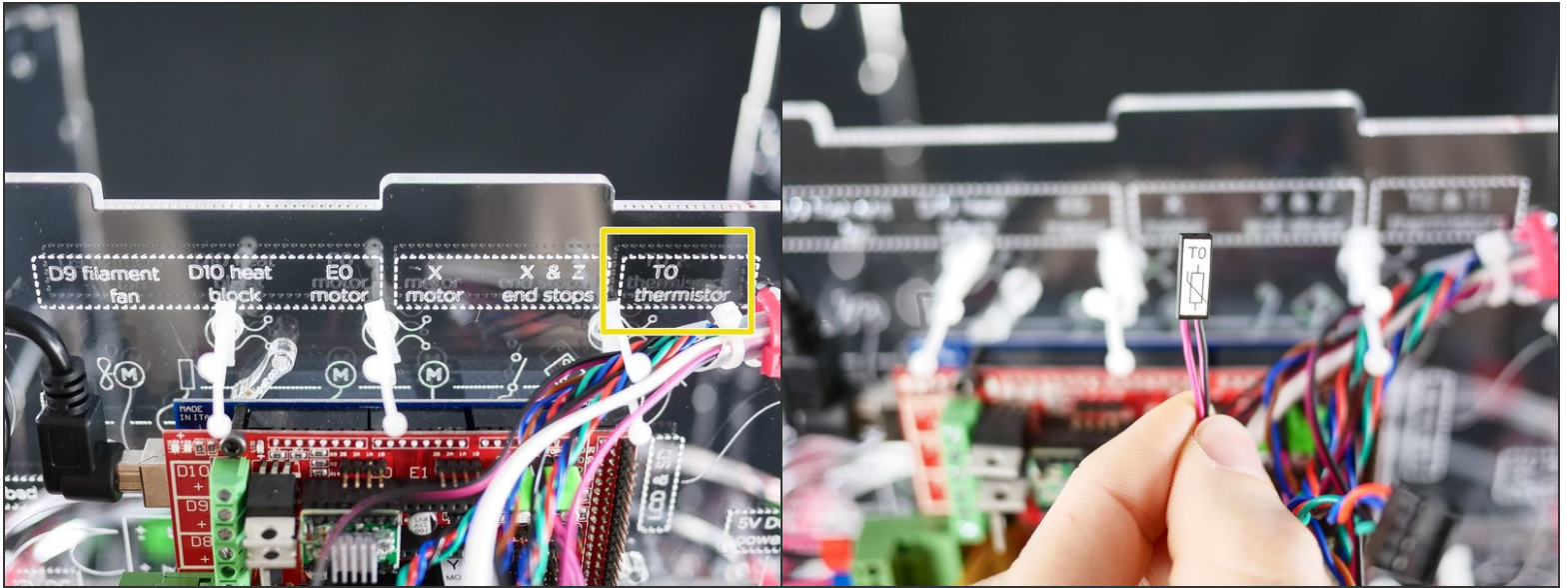
Step 42



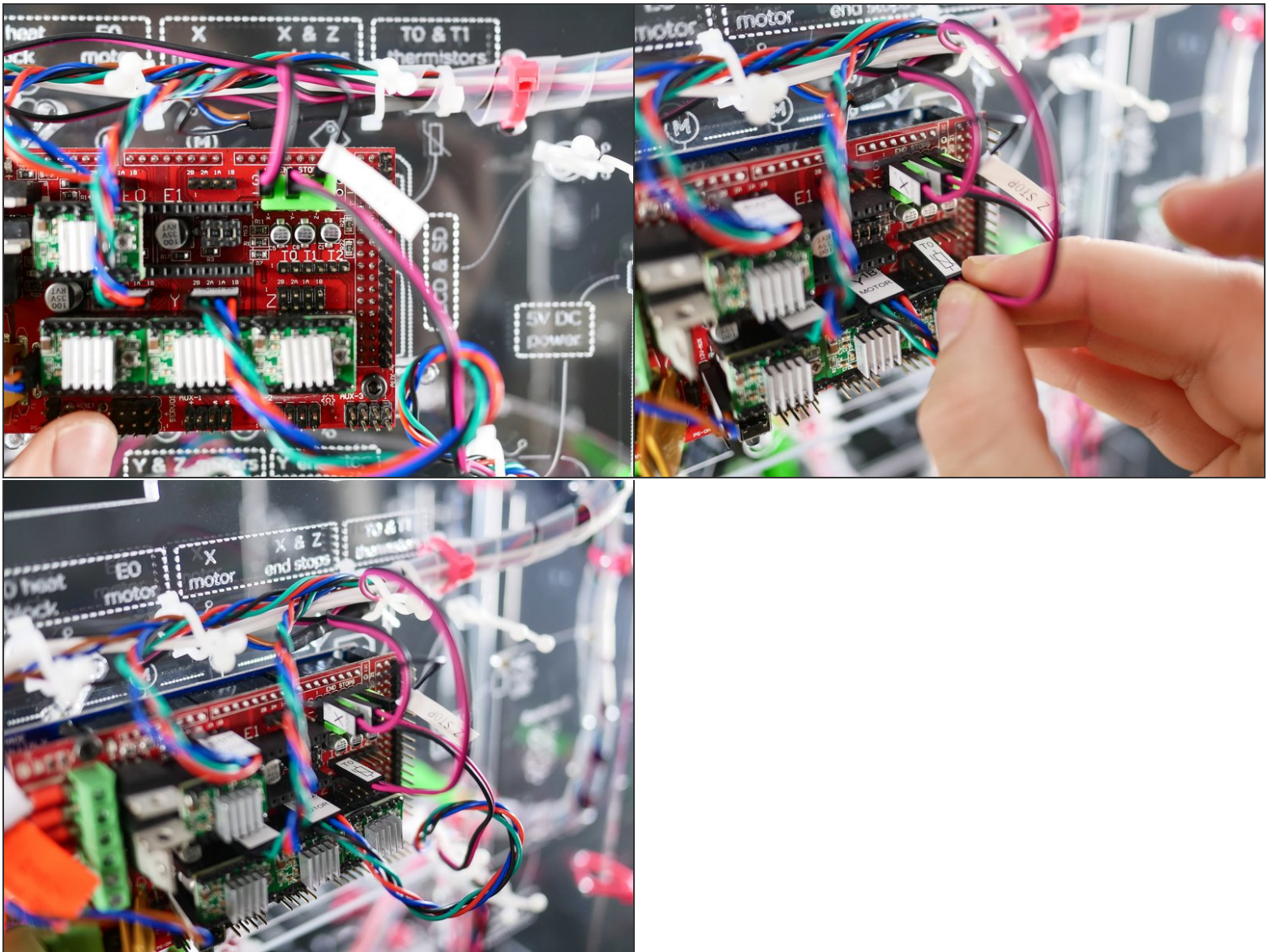
Step 43



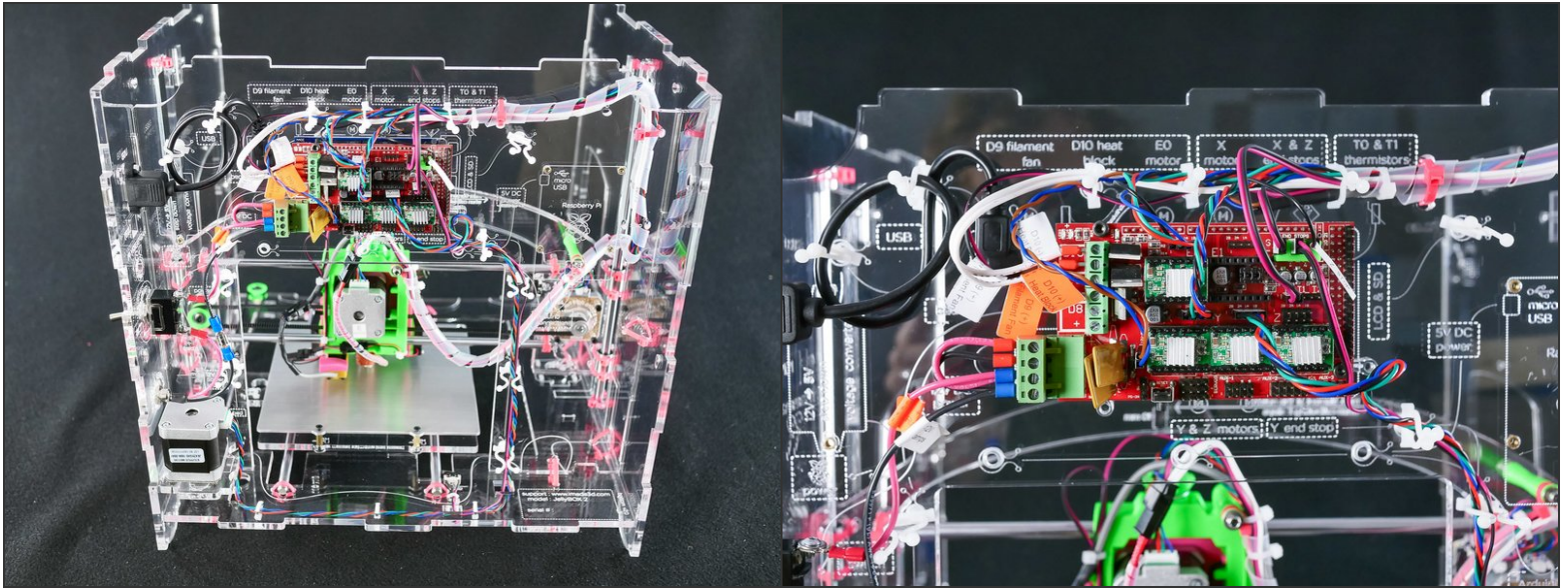
Step 44



Step 45



Step 46 — It's wired up!



You have installed the X assembly. This is arguably the longest and most complicated part of the whole build, so, kudos!

What's Next?

Get back to the [← Easy Kit Build Flow](#) and continue with the next guide.