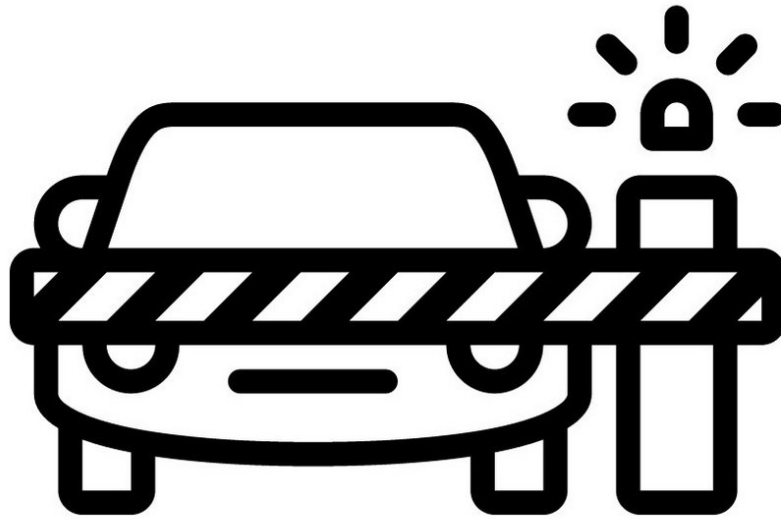




Checkpoint: It's Alive!

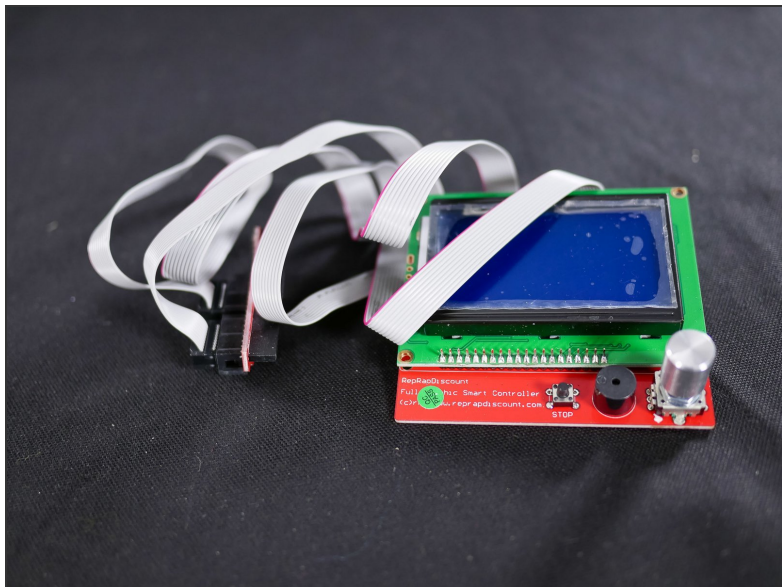


INTRODUCTION

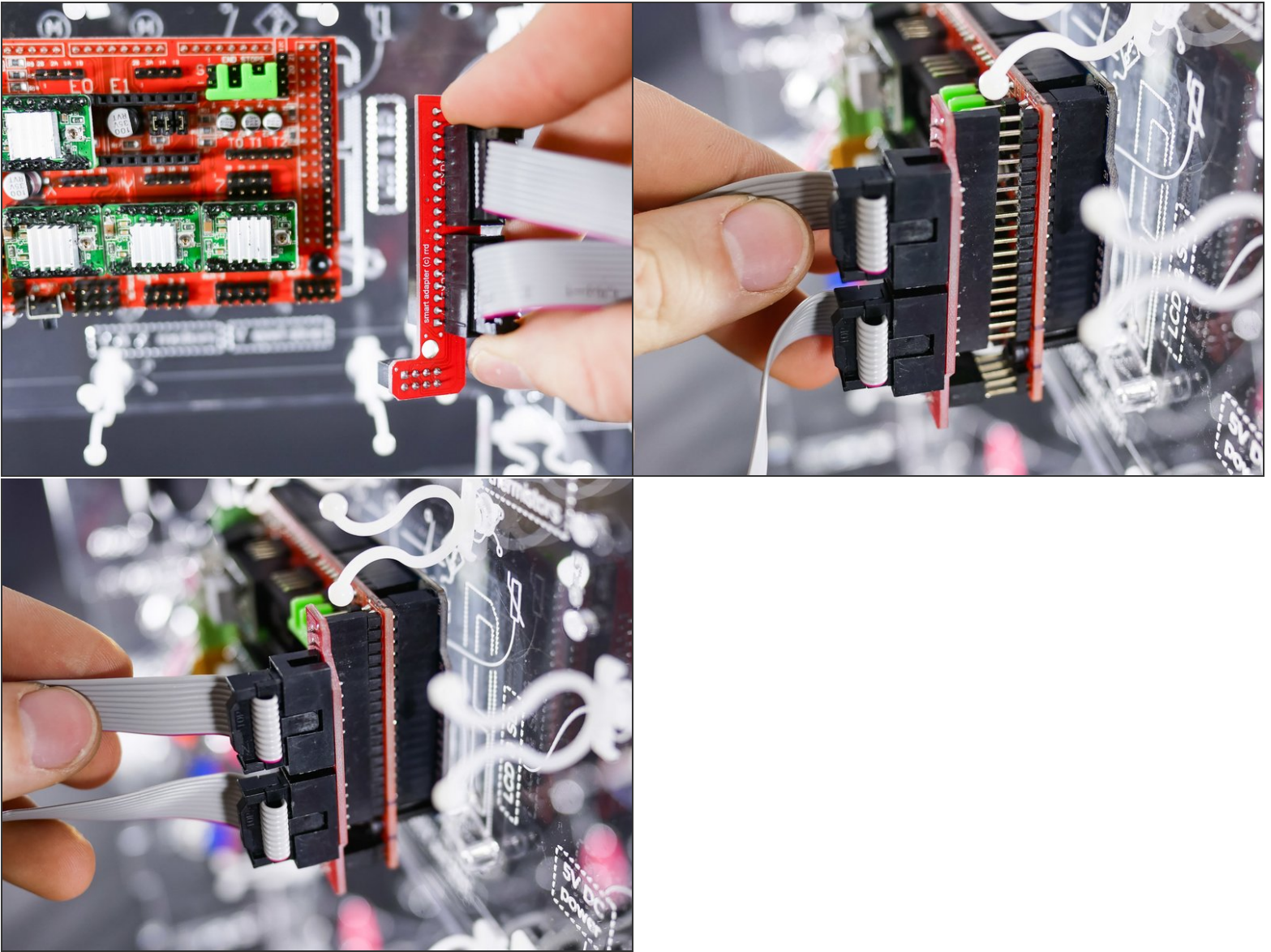
Not the guide you are looking for?

Go back to the [← Easy Kit Build Flow.](#)

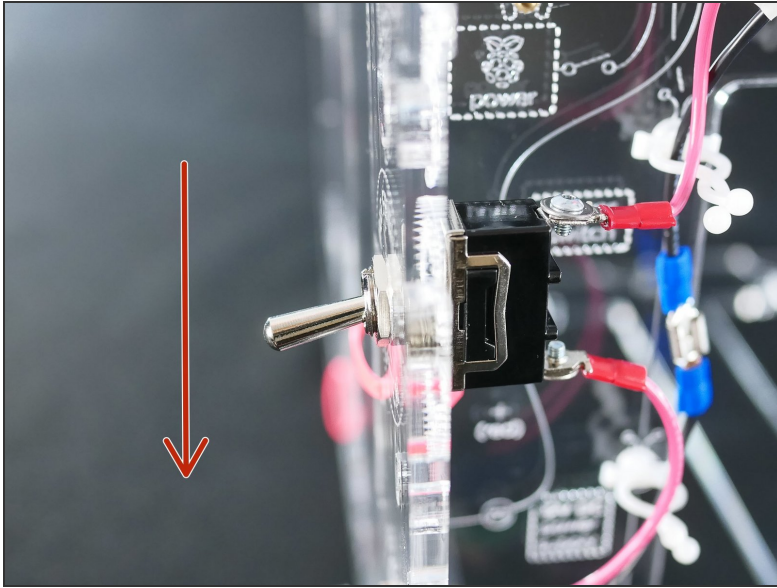
Step 1 — Checkpoint: It's Alive!



Step 2



Step 3

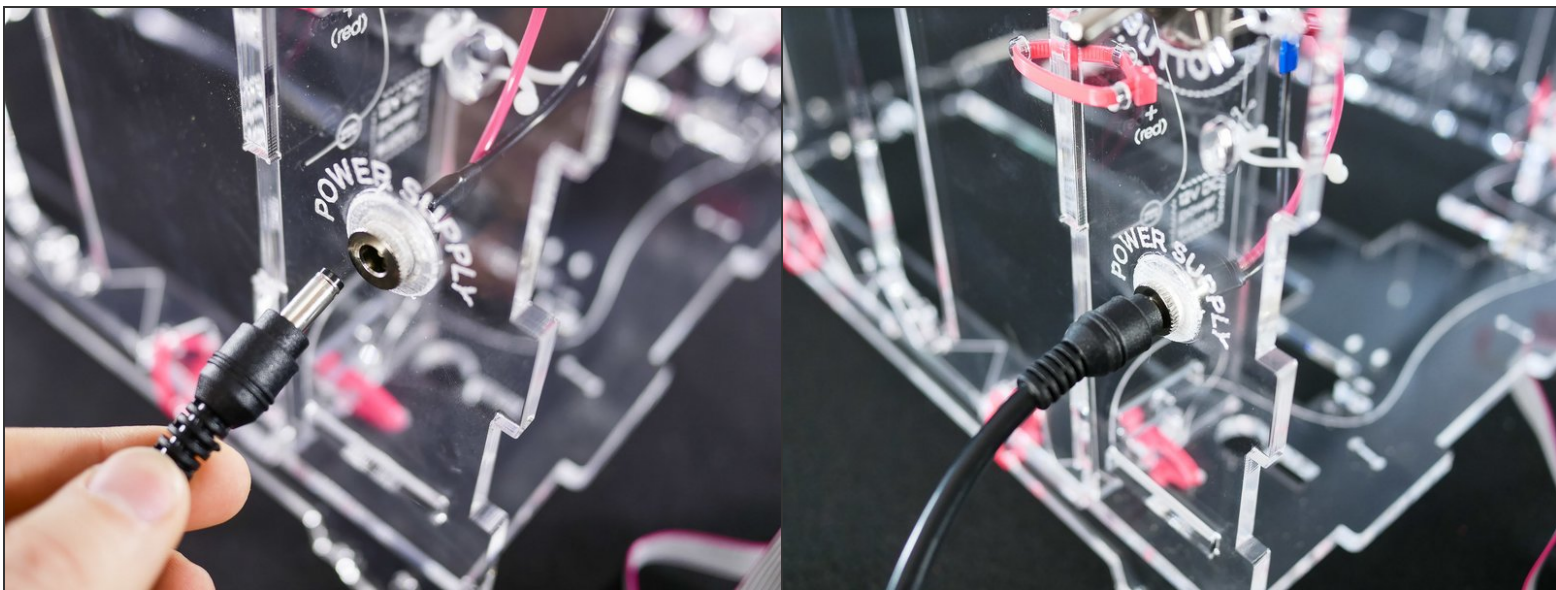


⚠ Make sure the **power switch is in OFF** position.

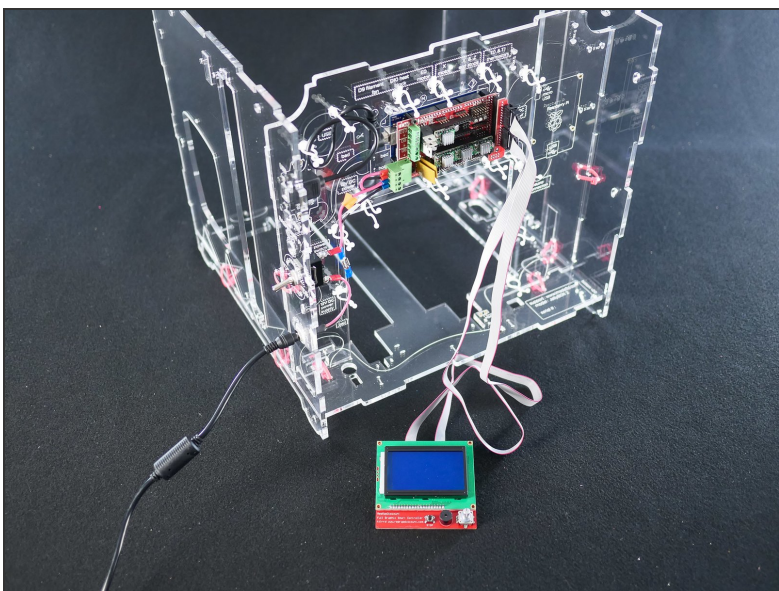
Step 4



Step 5



Step 6



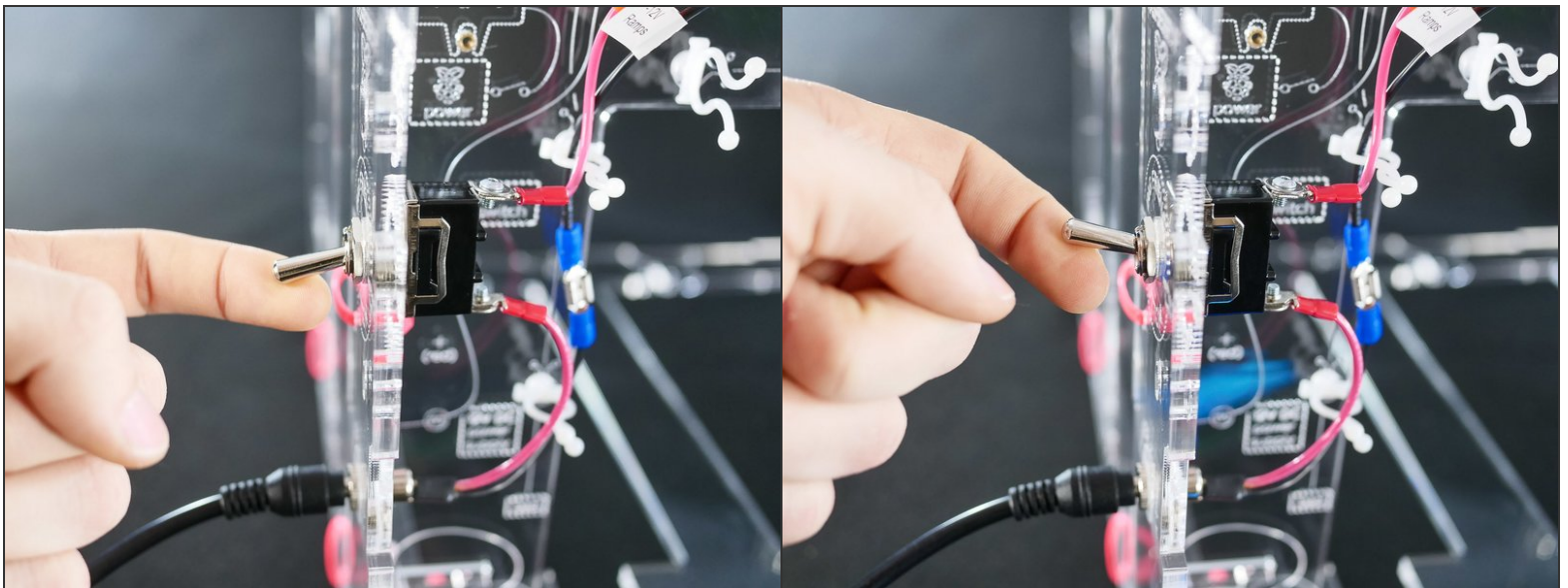
⚠ Make sure the area around your LCD controller is clear of tools or other metal objects as these might connect the exposed pins in the back and destroy your LCD.

- (Don't worry, there's no danger to you.)

Step 7

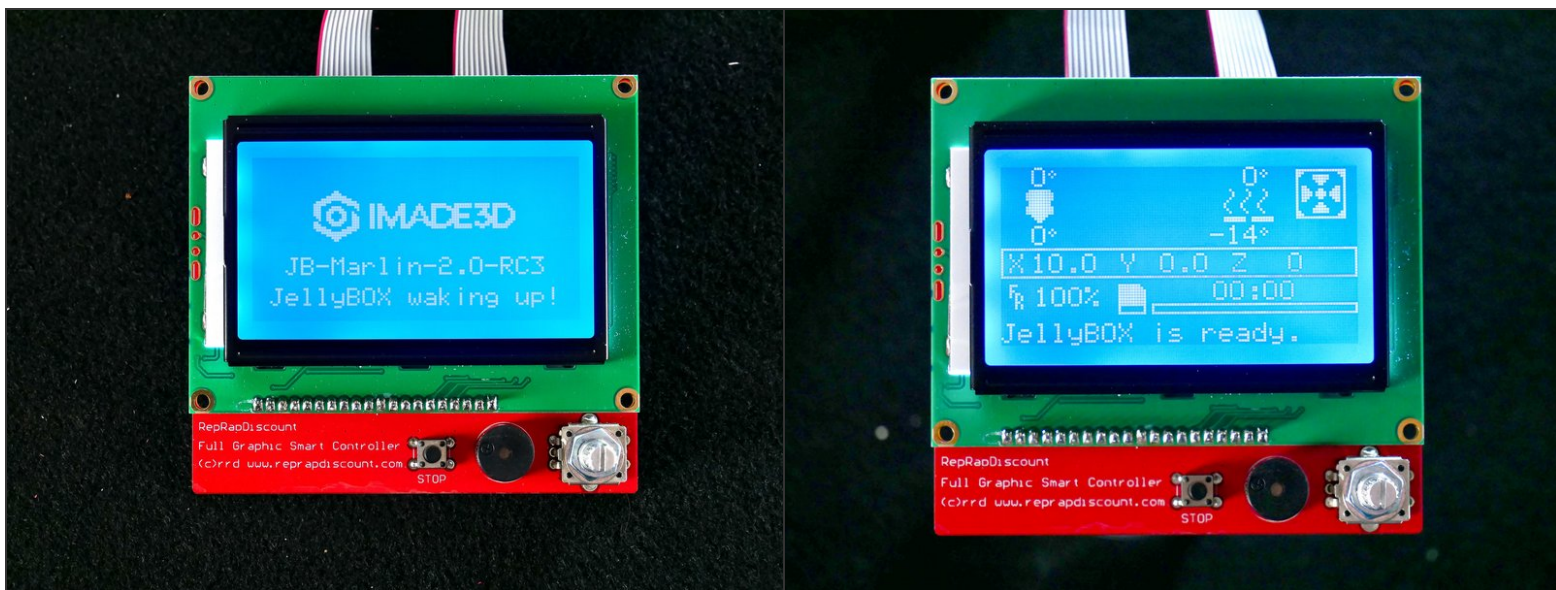


Step 8



- Turn the JellyBOX on for the first time. This is a historic moment.
- ⚠ Be ready to turn it off immediately if anything does not go as planned.
- ⚠ If you smell any hint of smoke from the electronics, turn off!

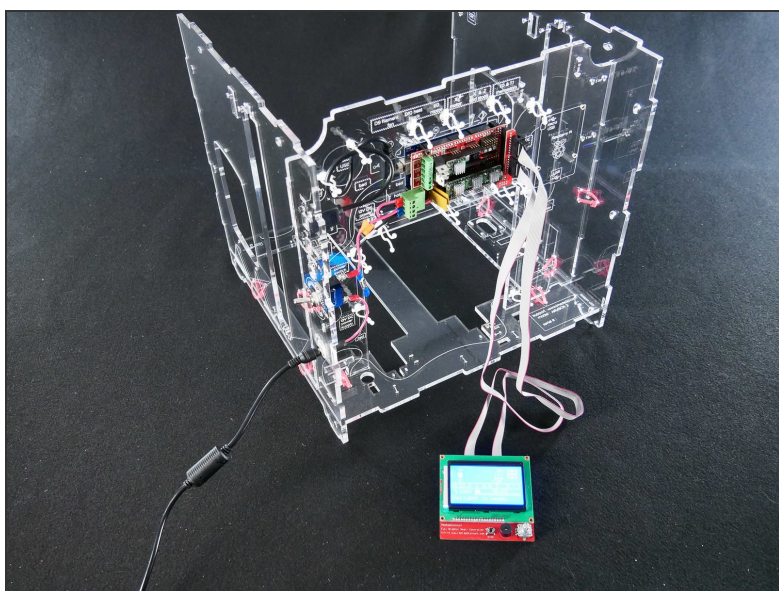
Step 9



- [It's alive!](#)

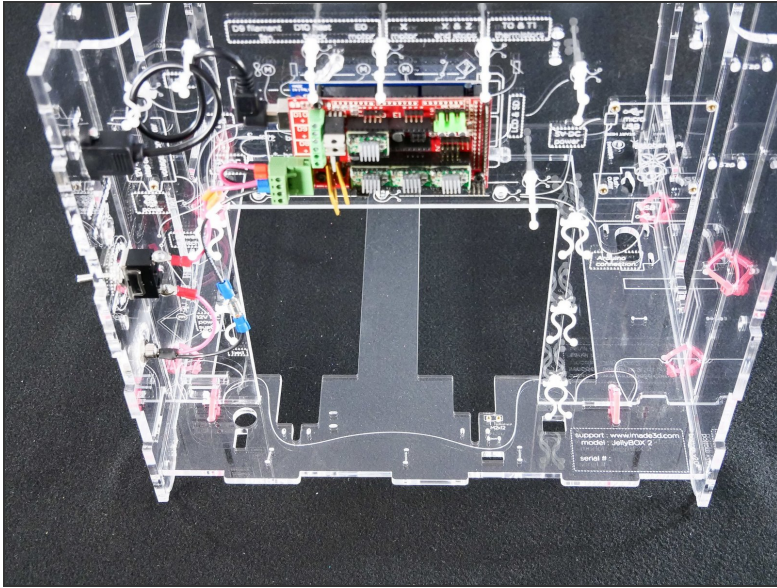
⚠ If the LCD does not light up, please [contact our support team](#).

Step 10



- Let loose a little victory dance.

Step 11 — It's alive! Now let's move on...



- 1. Turn off you JellyBOX
- 2. Unplug the power supply
- 3. Disconnect and stow away the LCD controller and wires
- This will make the rest of your build more enjoyable :-)

What's Next?

Get back to the [← Easy Kit Build Flow](#) and continue with the next guide.