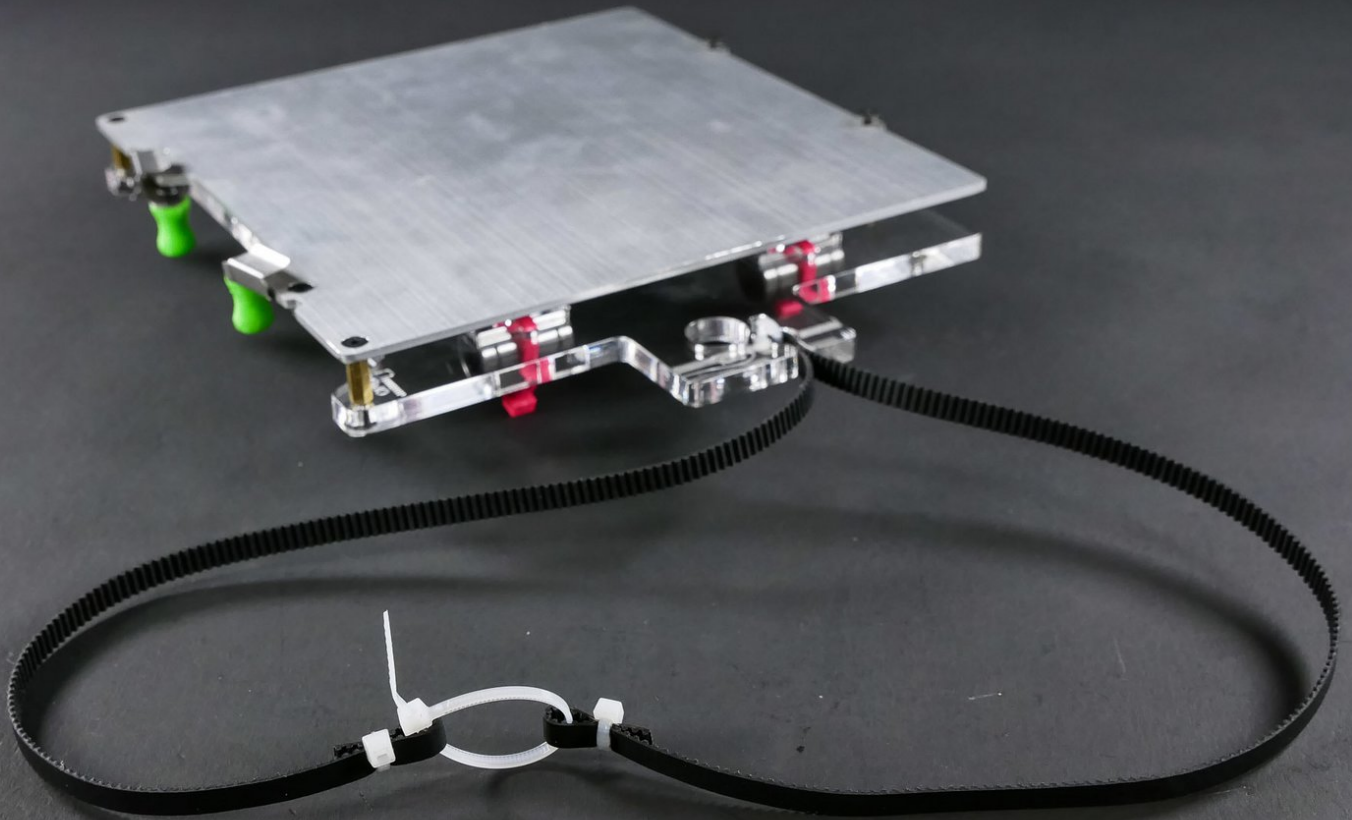




Y Assembly (easy kit)

Y Assembly (easy, cold)

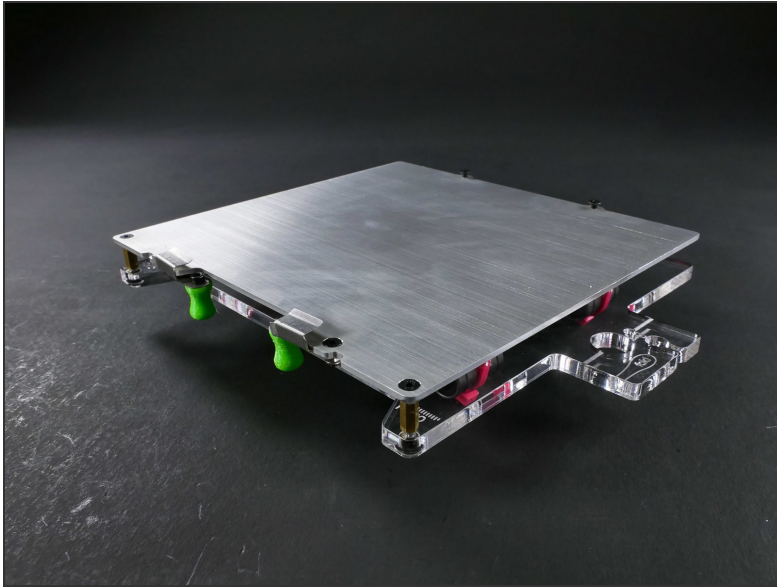


INTRODUCTION

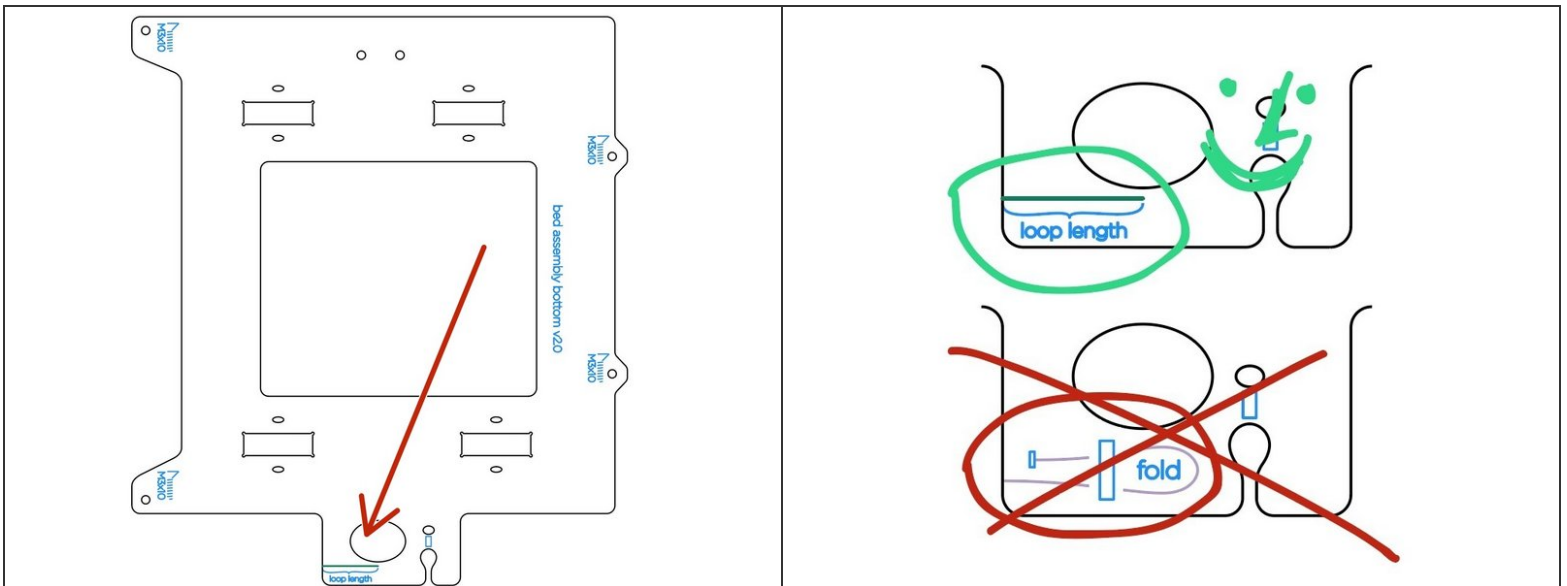
Not the guide you are looking for?

Go back to the [← Easy Kit Build Flow.](#)

Step 1 — ↳ Attach the Y Belt (cold)

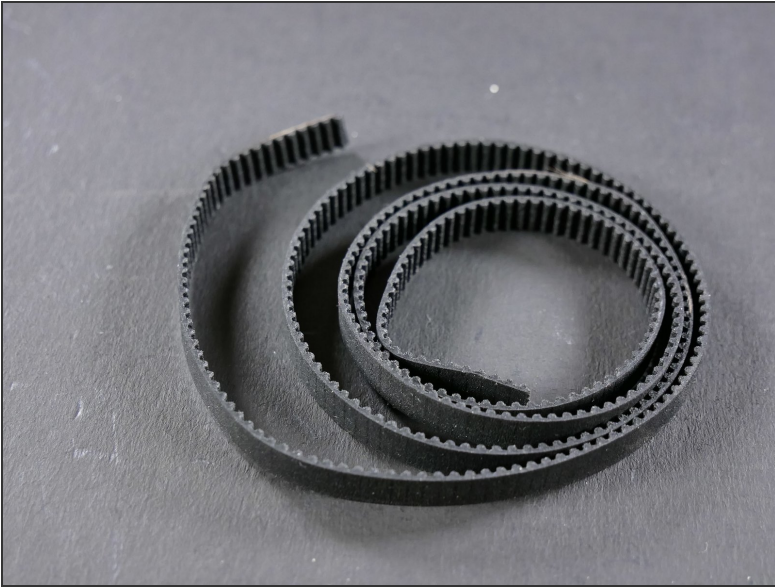


Step 2

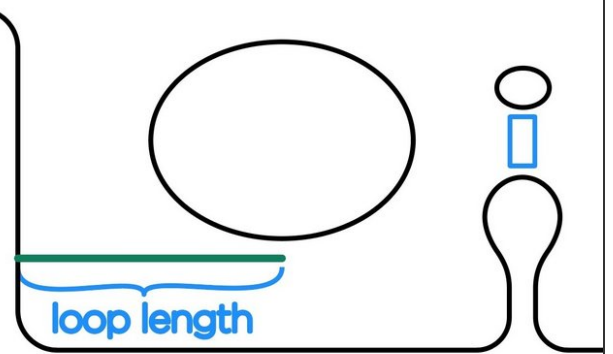
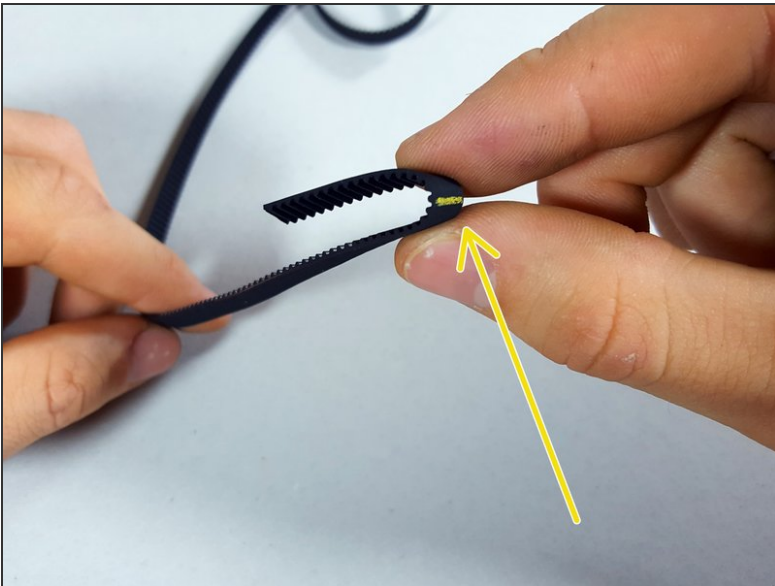


⚠ [update] The etchings on the bottom of the Y assembly have changed. Functionally, it's the same.

Step 3

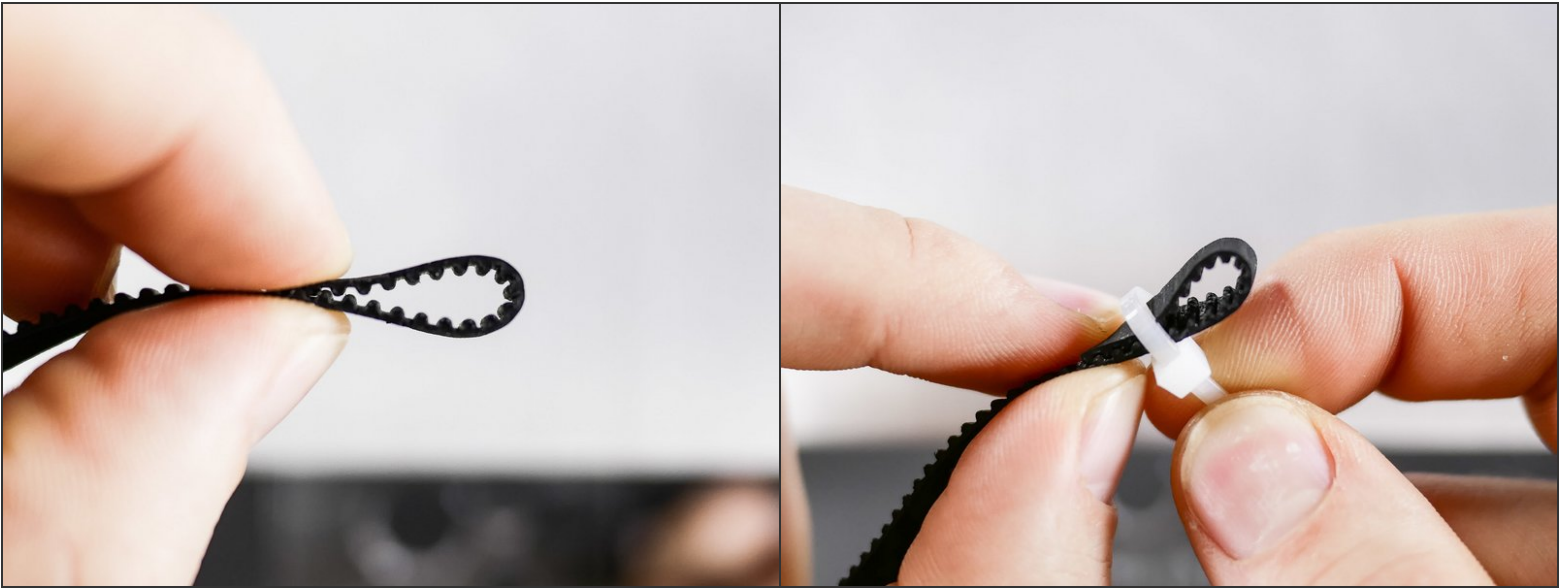


Step 4



- The marks on the belt mark the the tops of the loops.
- (The mark is 20mm from the end of the belt.)

Step 5

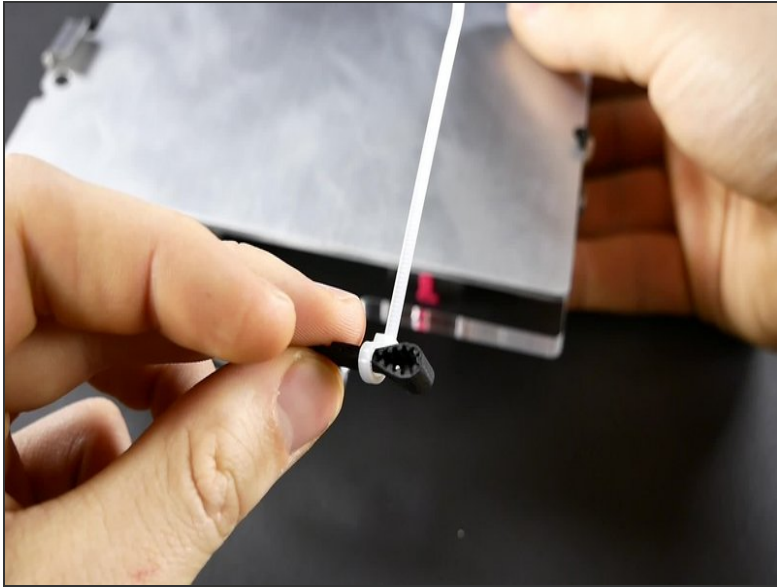


Step 6



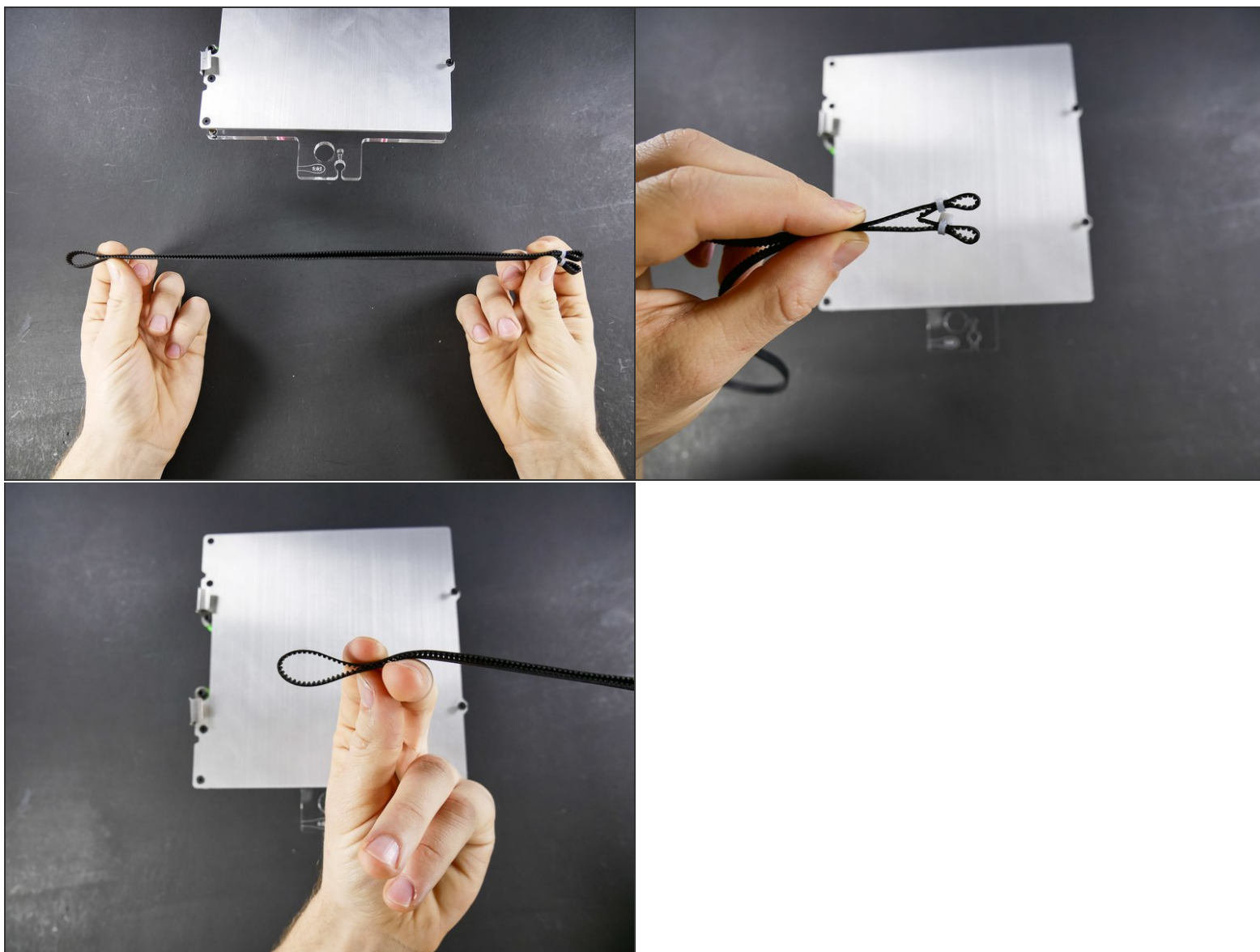
👉 This is just a very convenient **zip tightening method**.

- ▶ There's VIDEO in the next step.

Step 7 — ► Video: Tighten the Y Belt Zip Tie

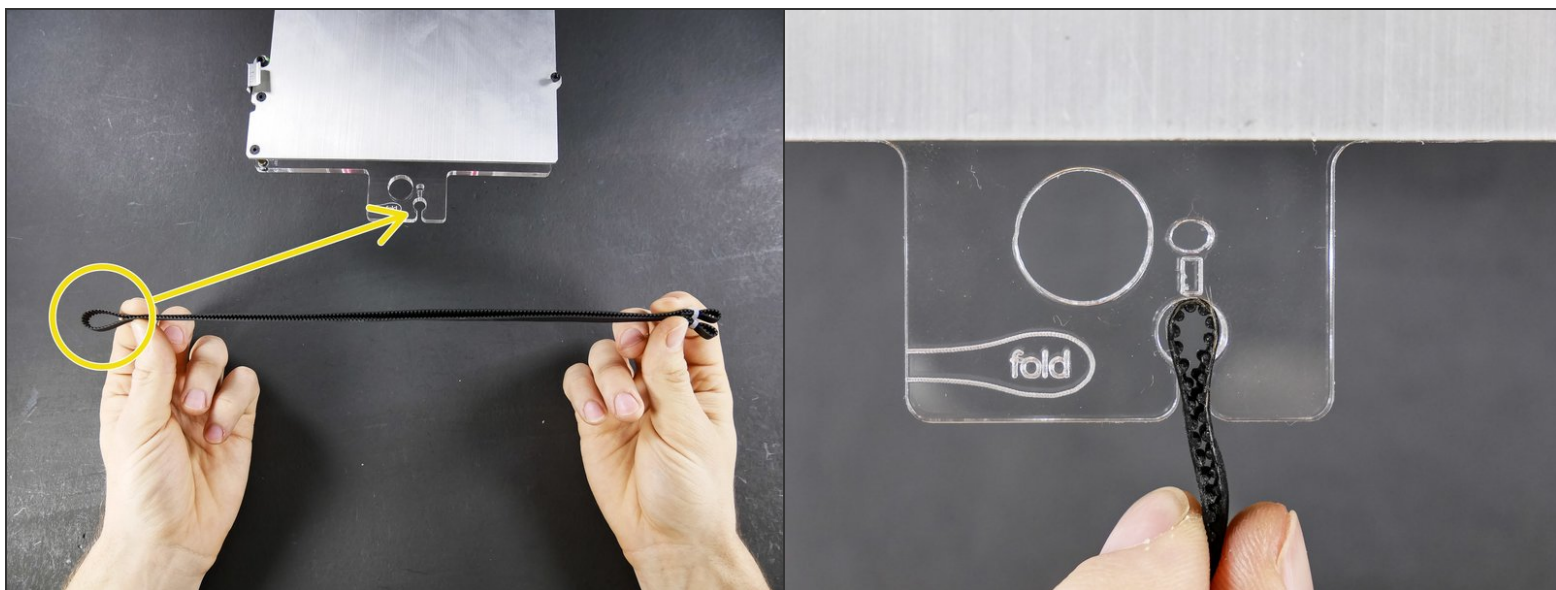
- ► Video: Tighten the Y Belt Zip Tie

Step 8

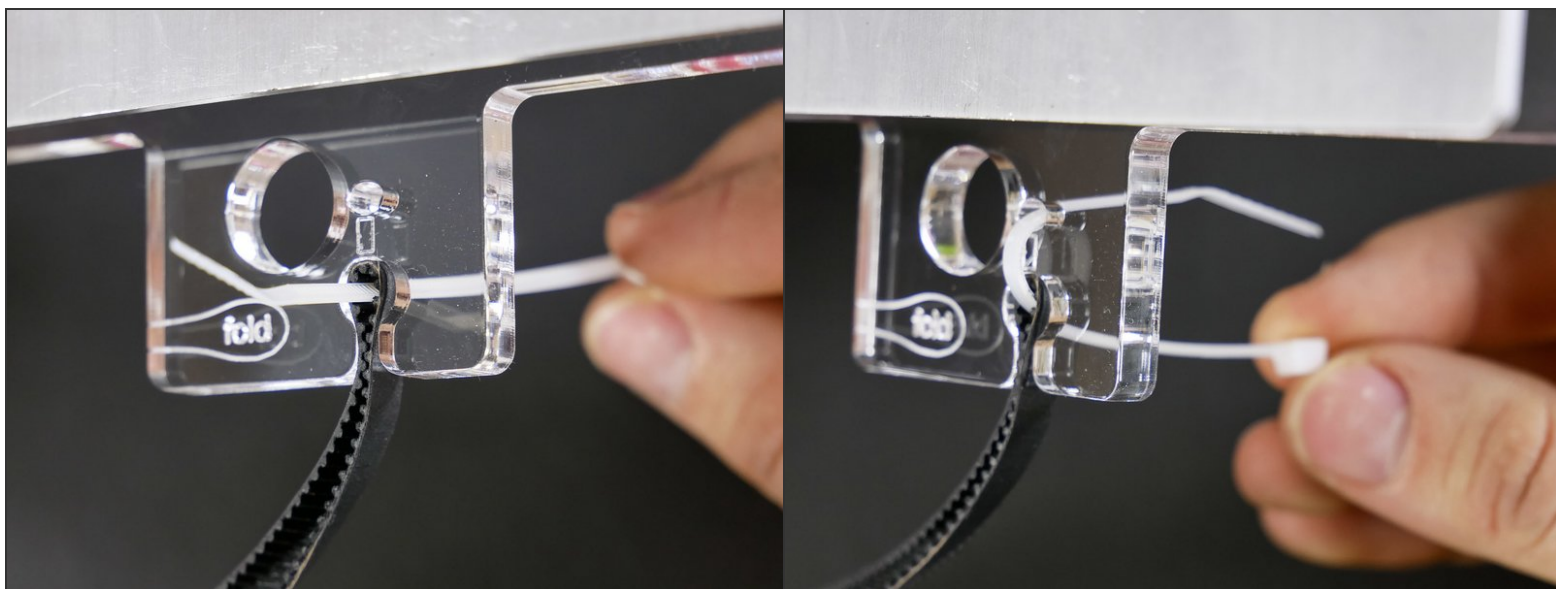


- Fold the belt in the middle.

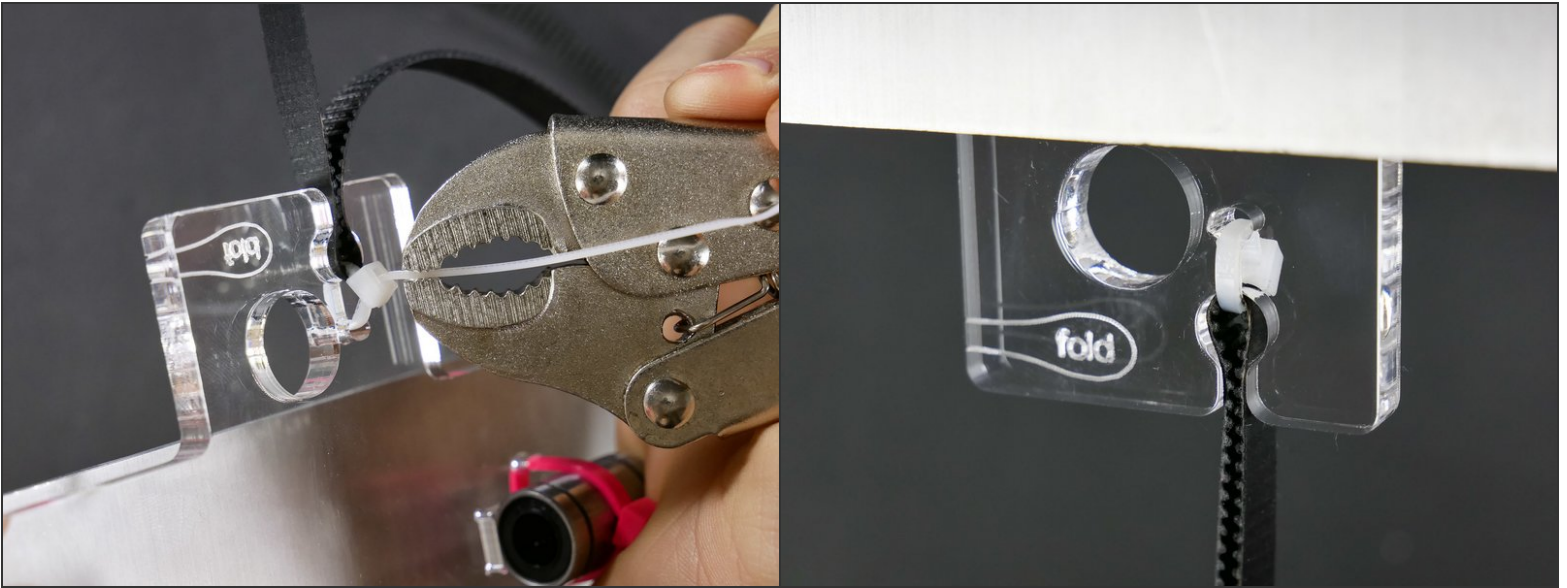
Step 9



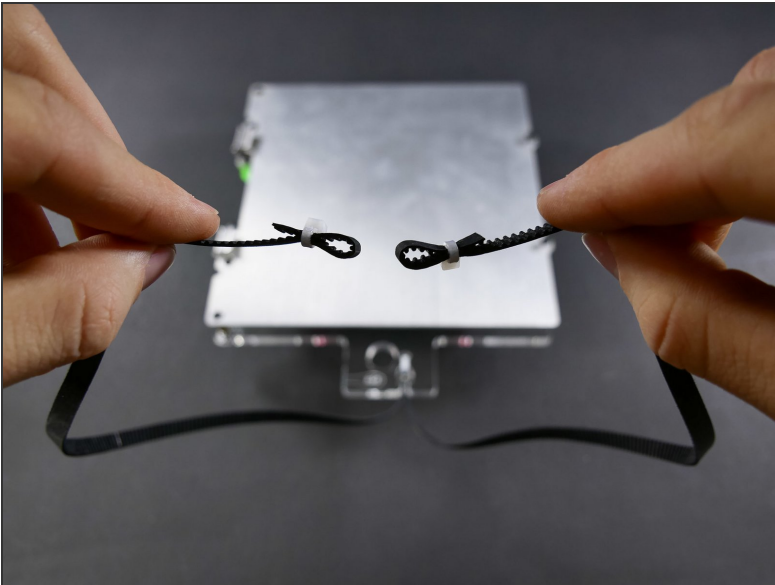
Step 10



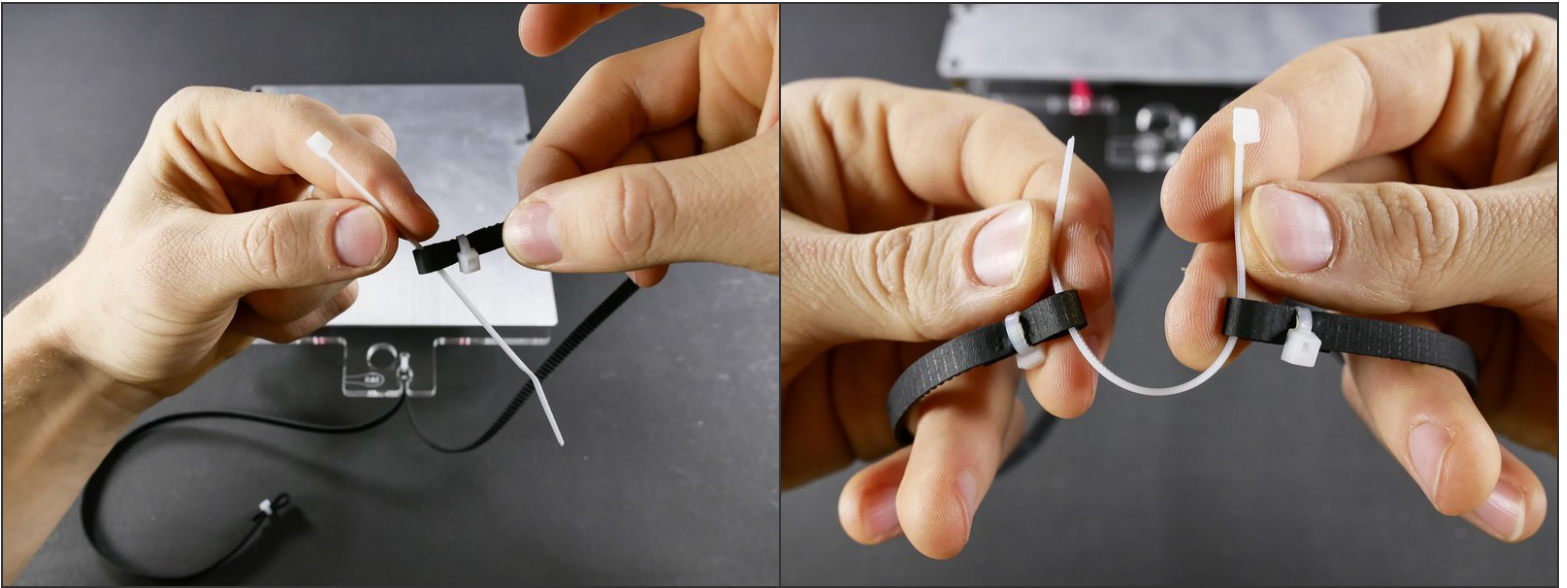
Step 11



Step 12



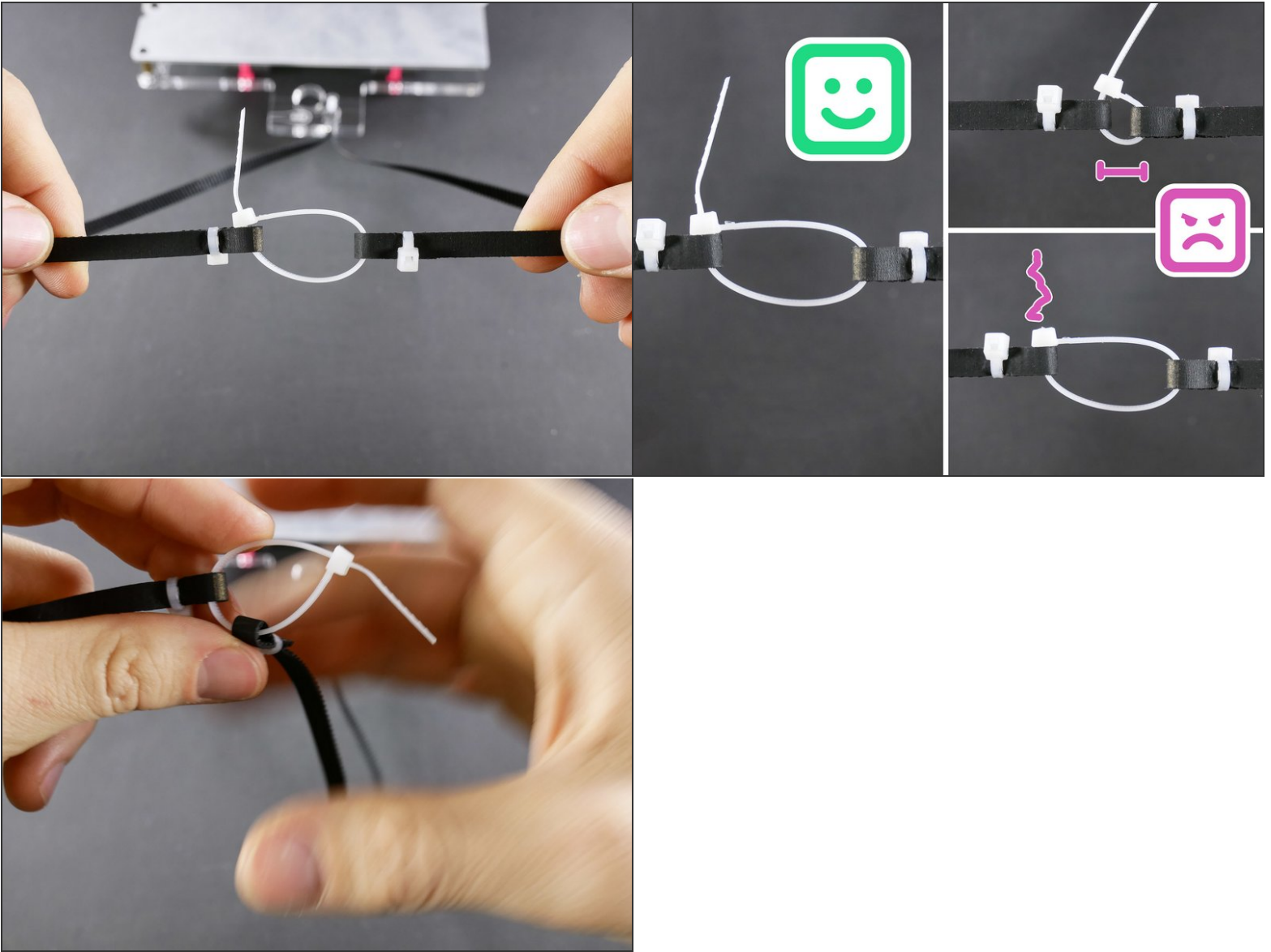
Step 13



⚠ Erratum: Use PINK 5" ZIP TIE

- The rest of the guide, unfortunately, still features white zip tie. Use a PINK one instead.

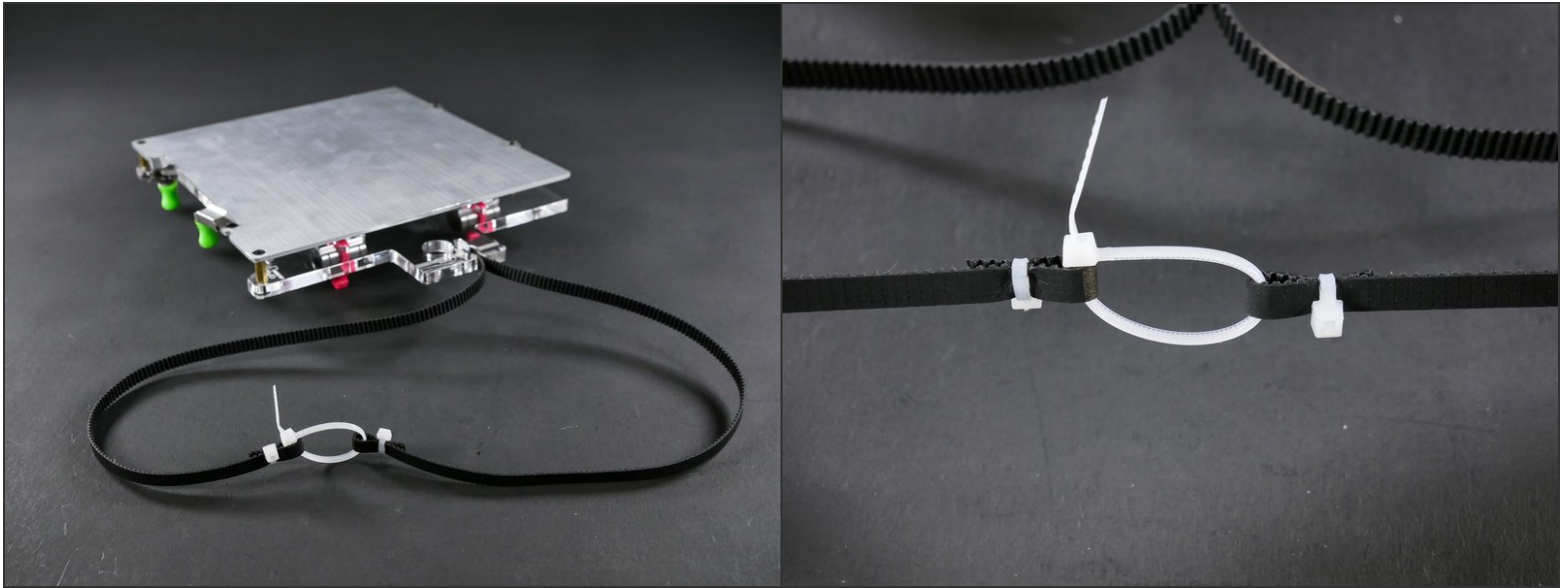
Step 14



⚠ Erratum: Use PINK 5" ZIP TIE

- The rest of the guide, unfortunately, still features white zip tie. Use a PINK one instead.

Step 15 — It's done!



- Happy you should be.

What's Next?

Get back to the [← Easy Kit Build Flow](#) and continue with the next guide.