



Y Motor Bracket (easy kit)



INTRODUCTION

Not the guide you are looking for?

Go back to the [← Easy Kit Build Flow.](#)



TOOLS:

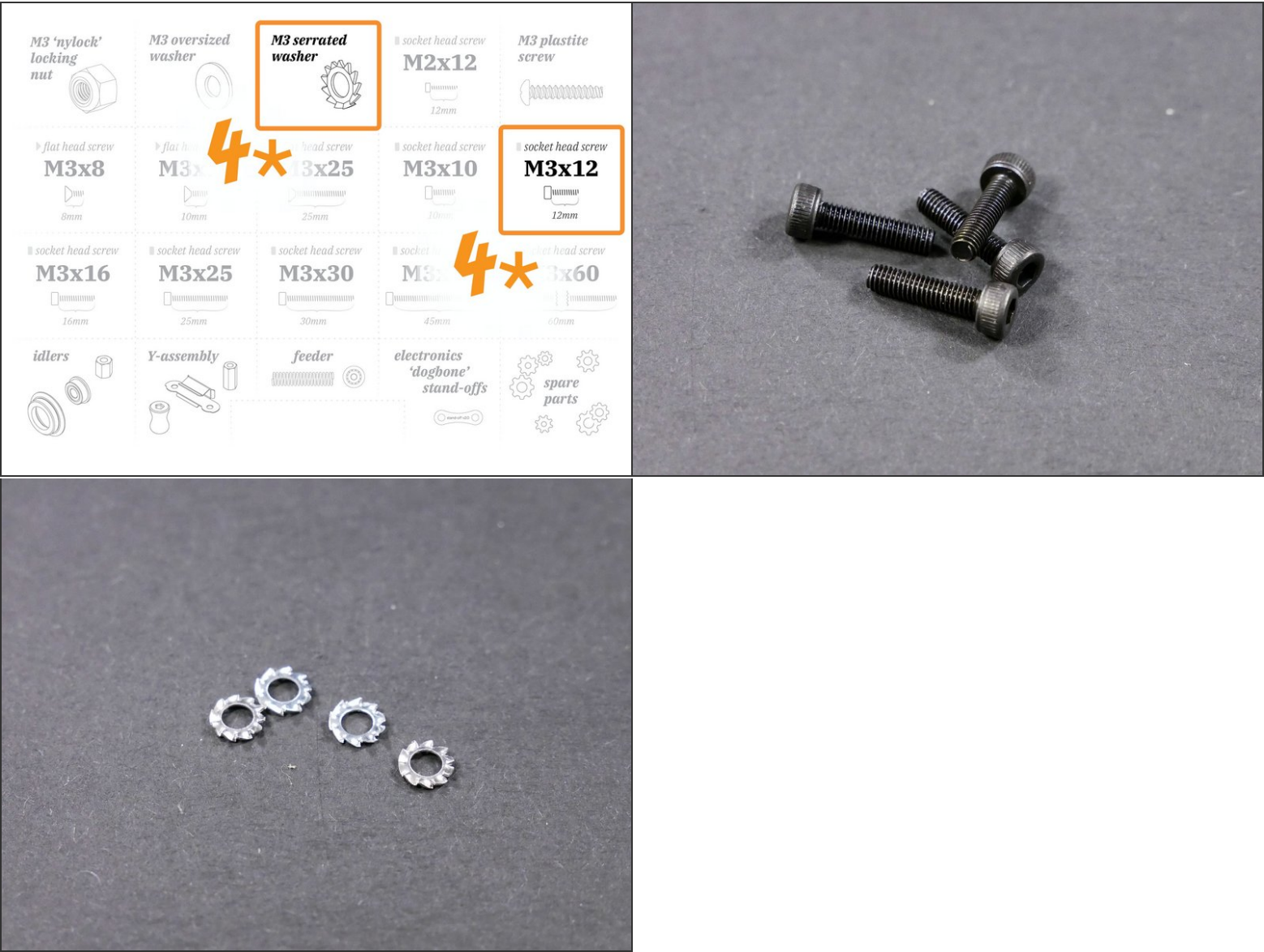
- [2.5mm Hex Key](#) (1)



PARTS:

- [M3x12 Socket Head Screw](#) (4)
- [M3 Serrated Washer](#) (4)
- [Y Bracket](#) (1)

Step 1 — ↳ Install the Y Motor

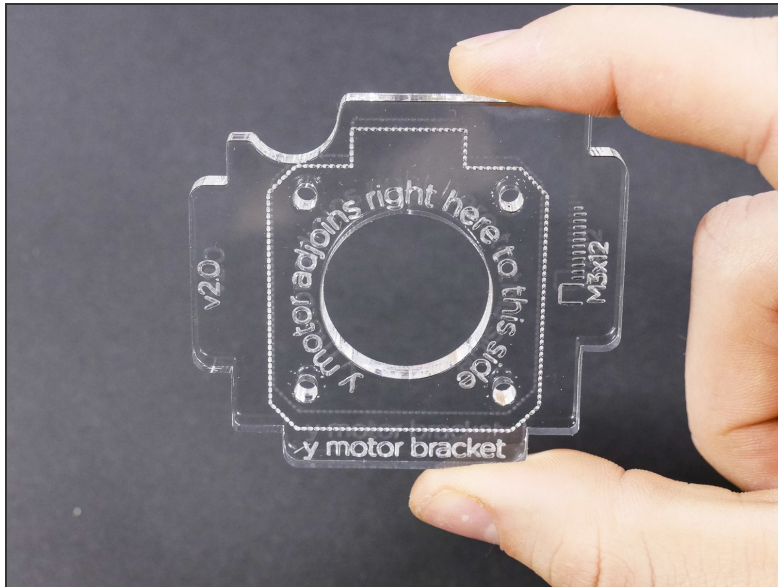


● M3x12

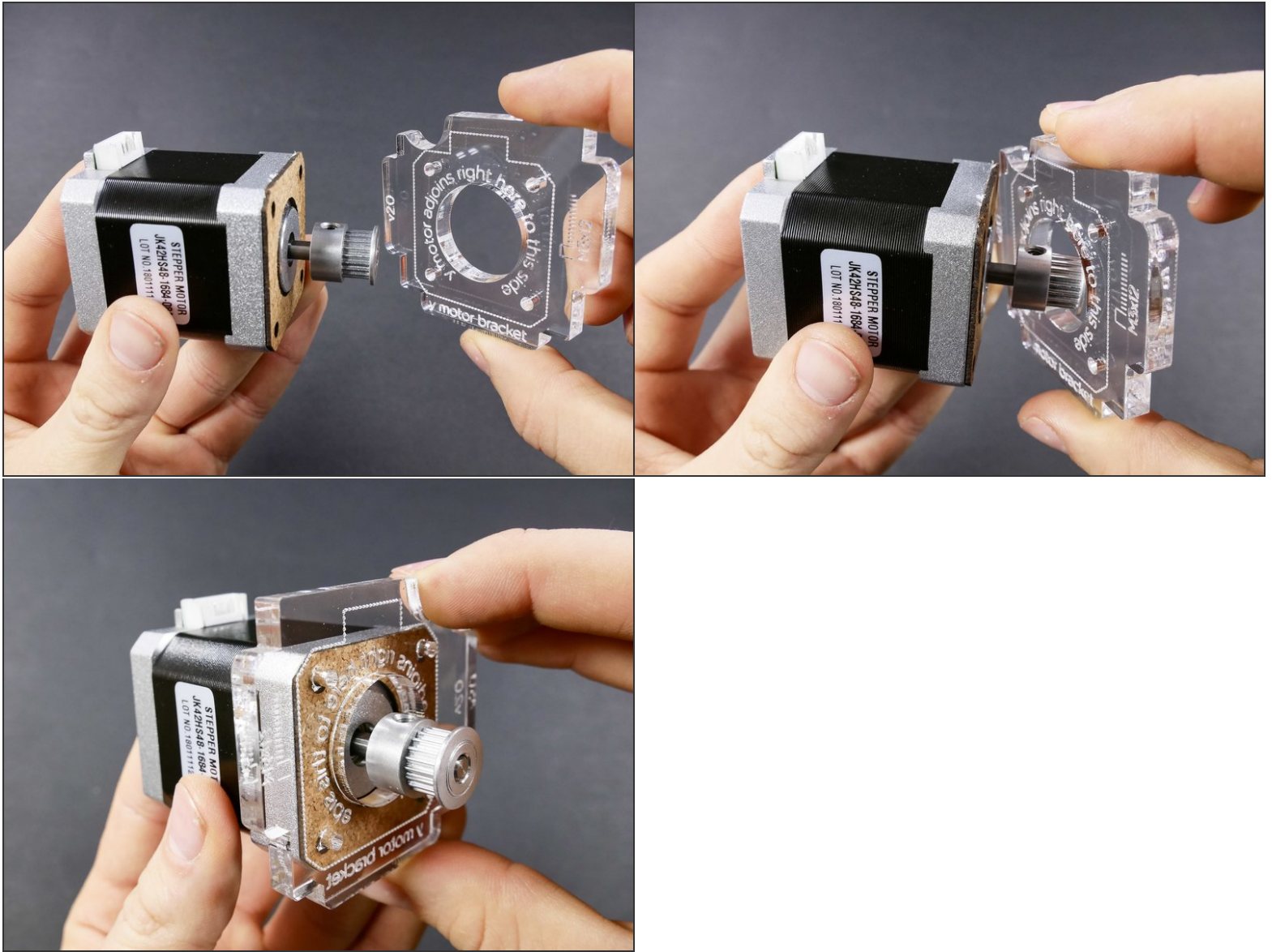
Step 2



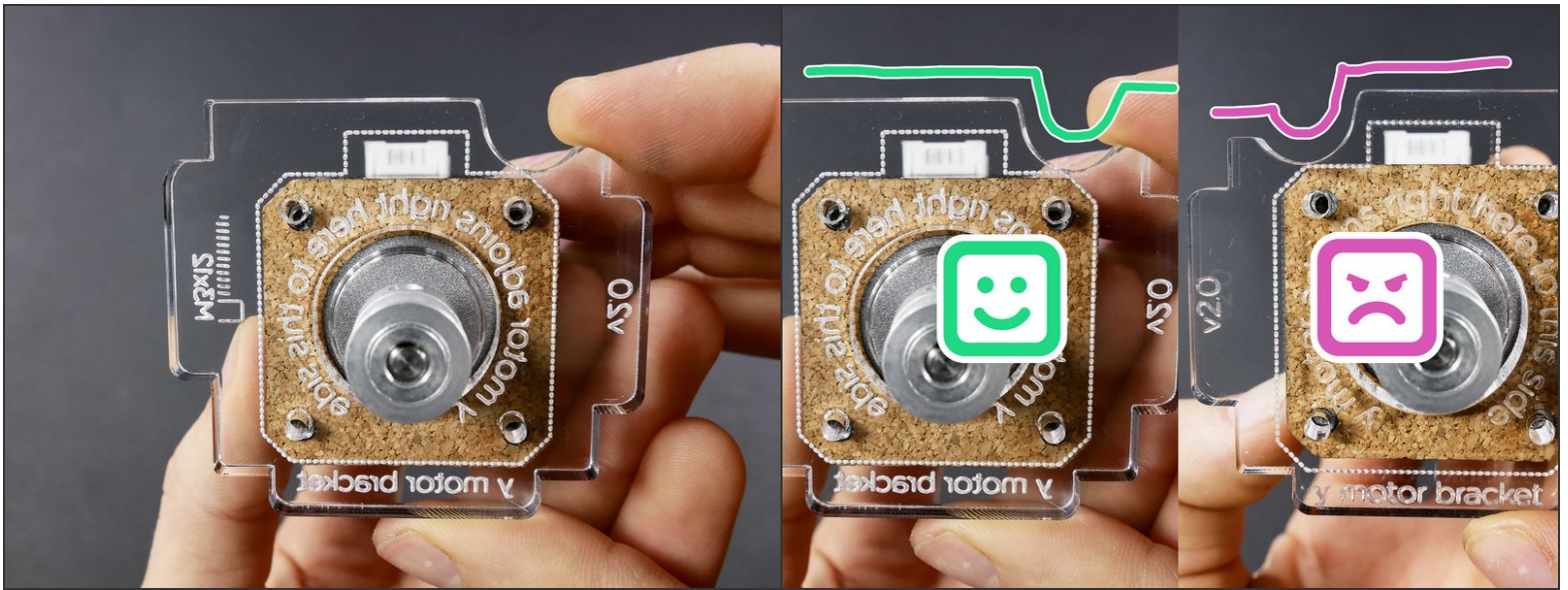
Step 3



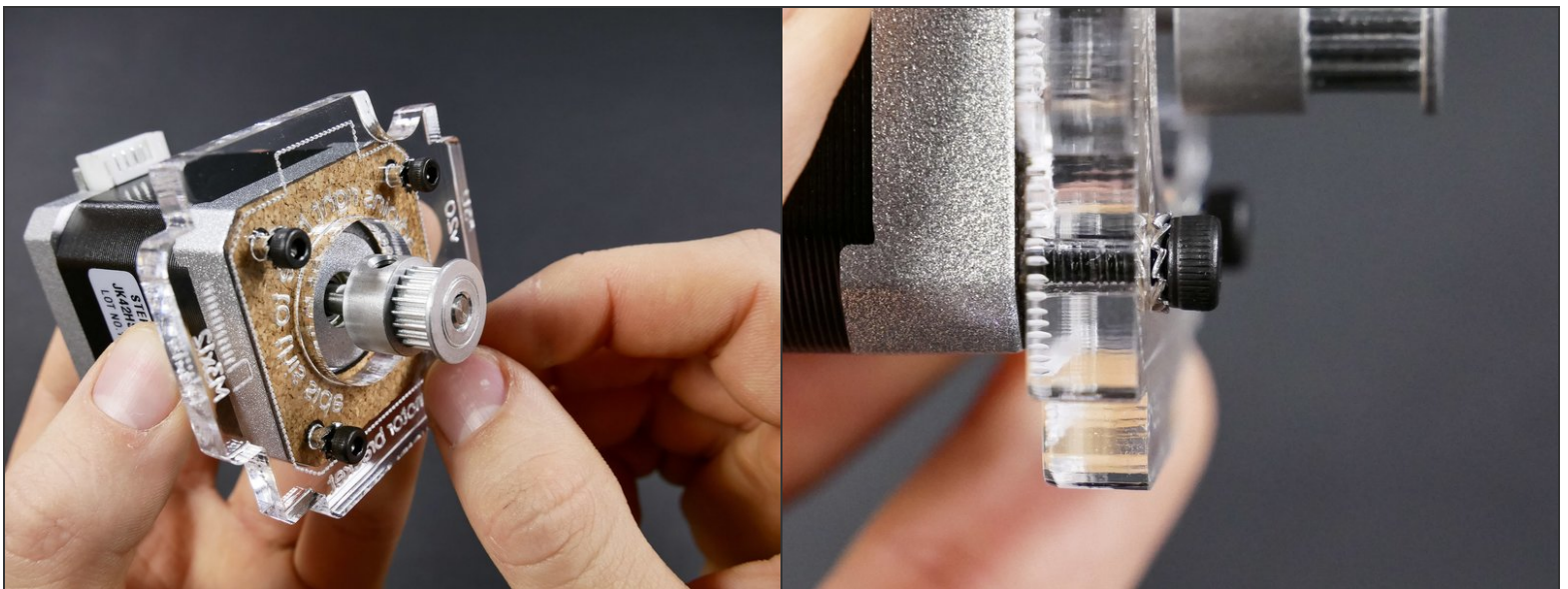
Step 4



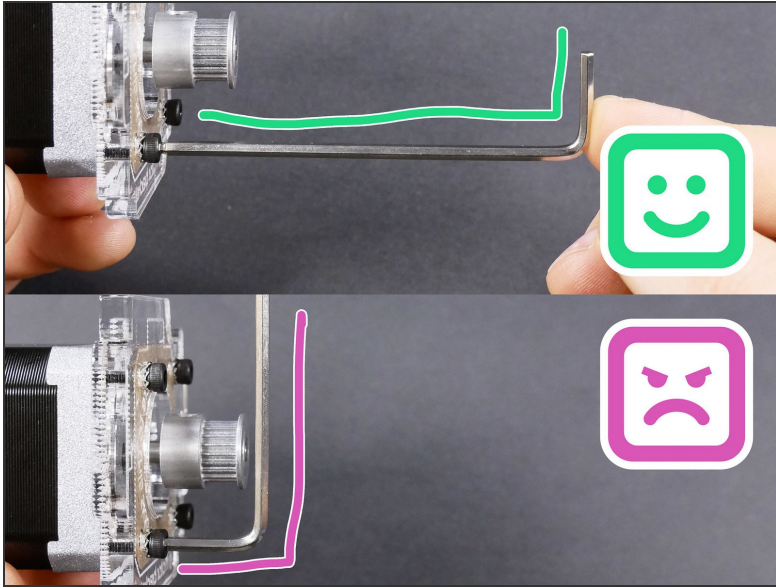
Step 5



Step 6

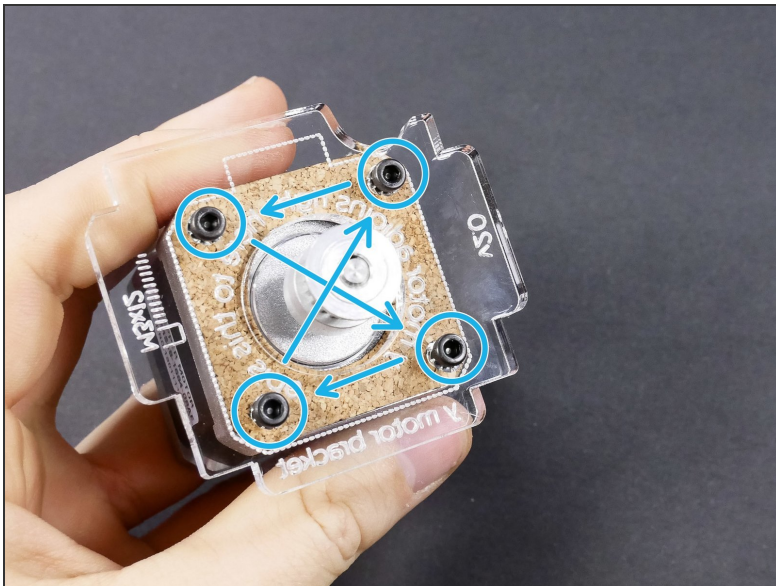


Step 7



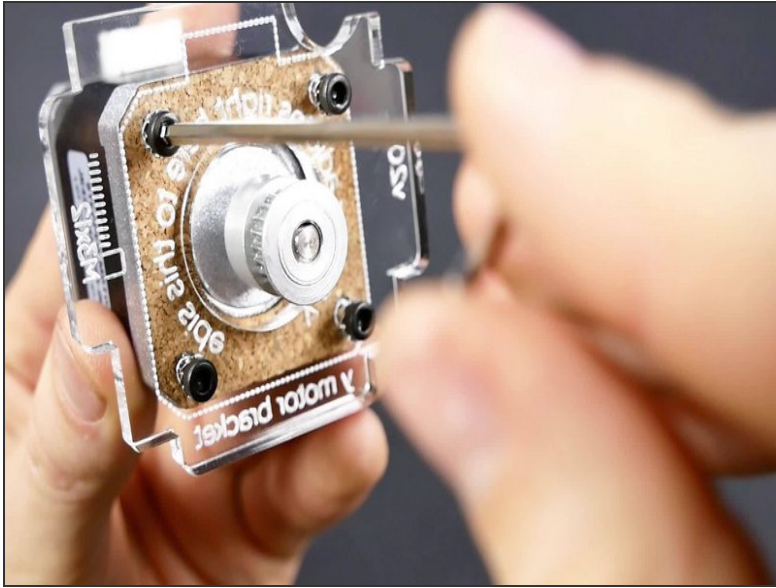
⚠ When tightening against plastic (frame, printed parts...), always hold the **short** side of the hex key to avoid over-tightening and damaging the part.

Step 8 — ✂ Technique: Cross-Tightening



- ⓘ Avoid alignment issues by tightening the screws **little by little in a diagonal pattern**.
- ⓘ This is called "cross-tightening", and you should do it *every time** you have more than one screw to tighten.

● * *even when you're not building a JellyBOX*

Step 9 — ► Video: Cross-Tightening (20s)

- ► Video: Cross-Tightening (20s)

Step 10 — It's done!

- The Y motor bracket is assembled. All the naysayers shall be silent now. You are doing this.

What's Next?

Get back to the [← Easy Kit Build Flow](#) and continue with the next guide.