



# Y Motor Bracket (makers)



# INTRODUCTION

Not the guide you were looking for?

Go back to the [← Makers Kit Build Flow.](#)



## TOOLS:

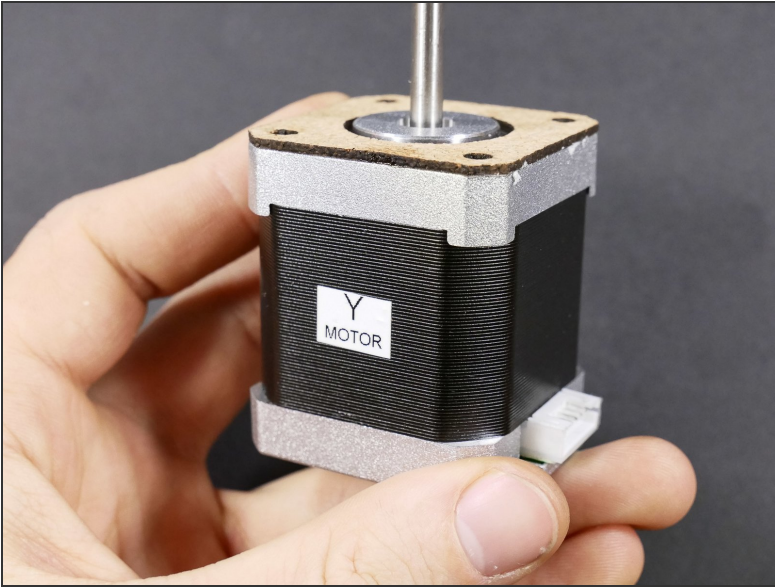
- [2mm Hex Key \(≈ Allen Key\)](#) (1)
- [2.5mm Hex Key](#) (1)



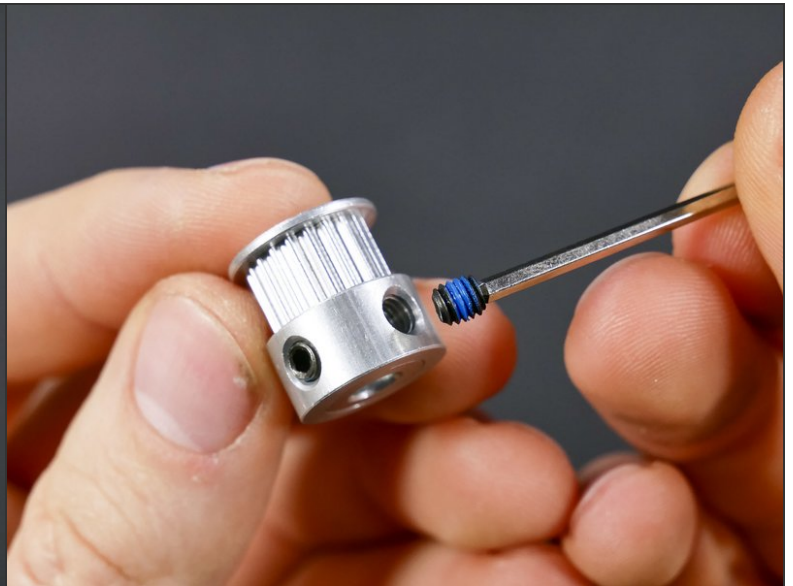
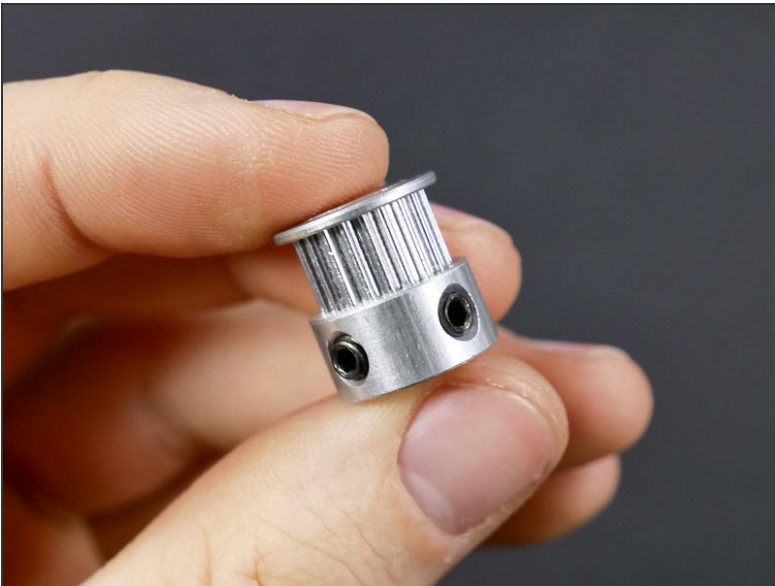
## PARTS:

- [Pulley](#) (1)
- ['Corked' Y Motor](#) (1)
- [M3x12 Socket Head Screw](#) (4)
- [M3 Serrated Washer](#) (4)
- [Y Bracket](#) (1)

## Step 1 — ↳ Install the Y Pulley



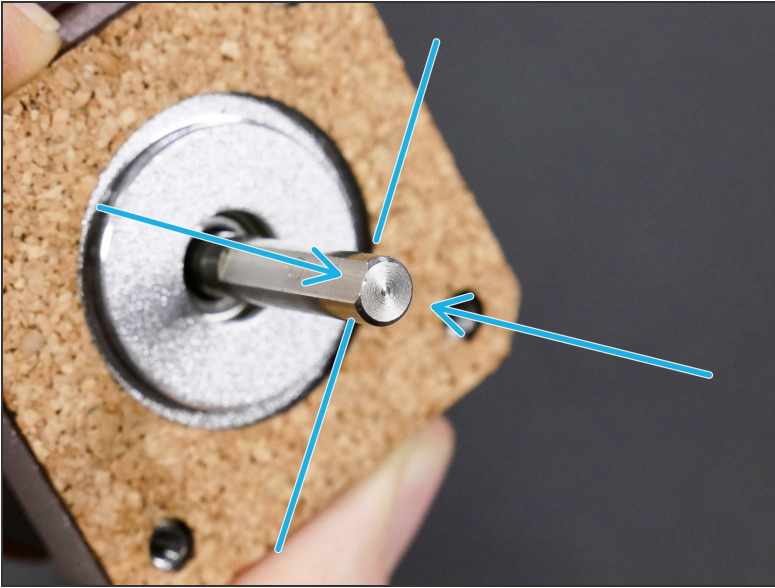
## Step 2



- i** The *set screws* in the pulleys have nylon locking patches pre-applied to resist loosening with vibrations. Therefore, we do not need to use threadlock.

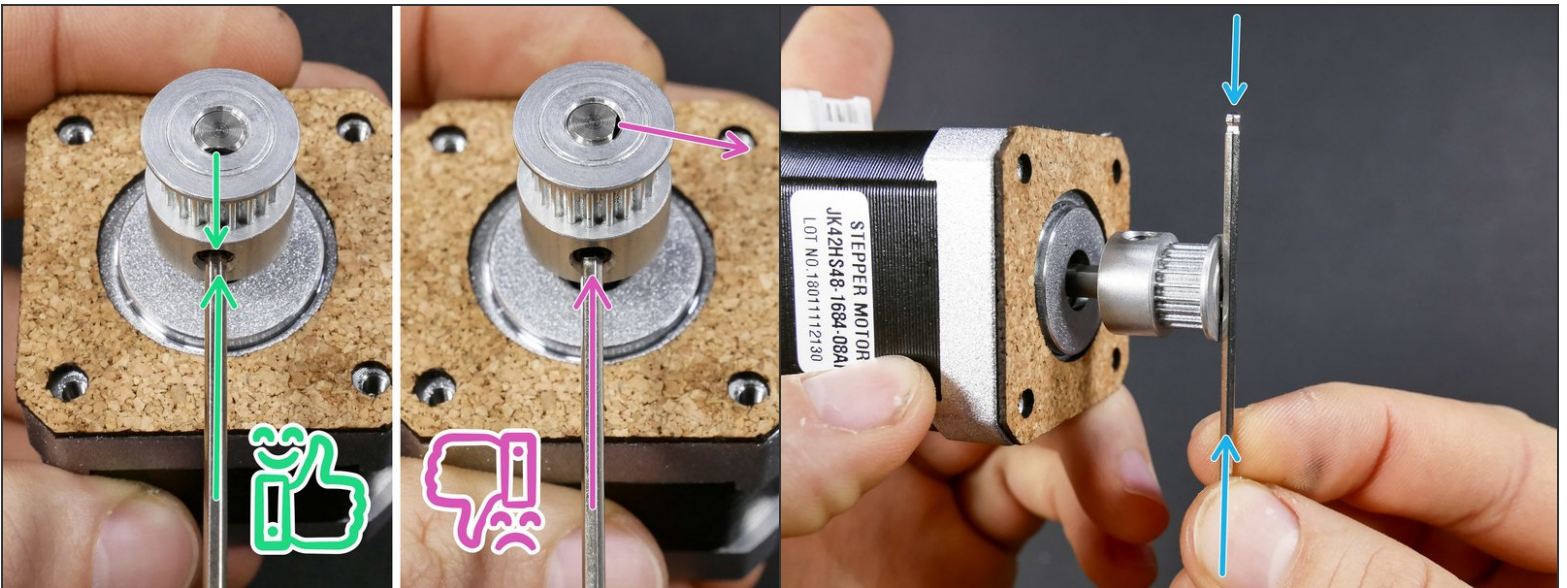


### Step 3



- The motor shaft has one **flat** side.

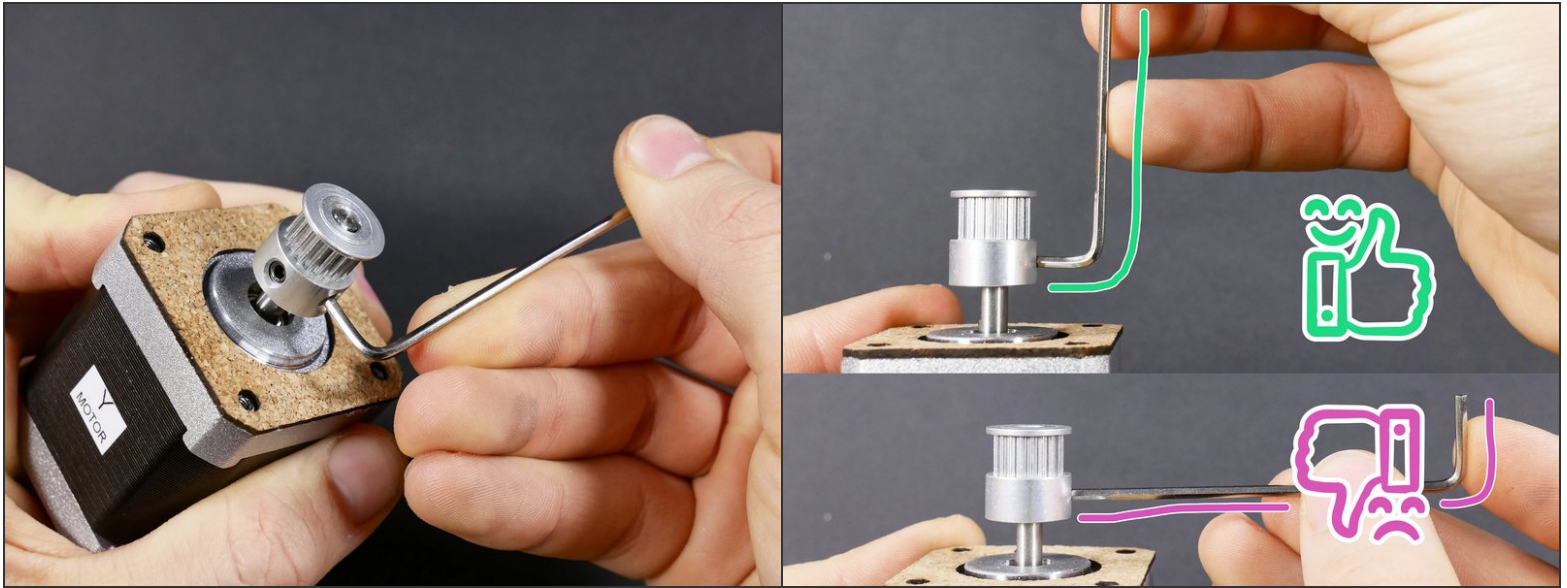
### Step 4



⚠ Tighten the longer set screw against the **FLAT** side of the motor shaft.

- Make the top of the motor shaft flush with the top of the pulley.

## Step 5



☑ Tighten the set screws well.

⚠ Tightening well does not mean tightening with unrestrained force. You can strip the set screw threads or its hex head if you use too much force.

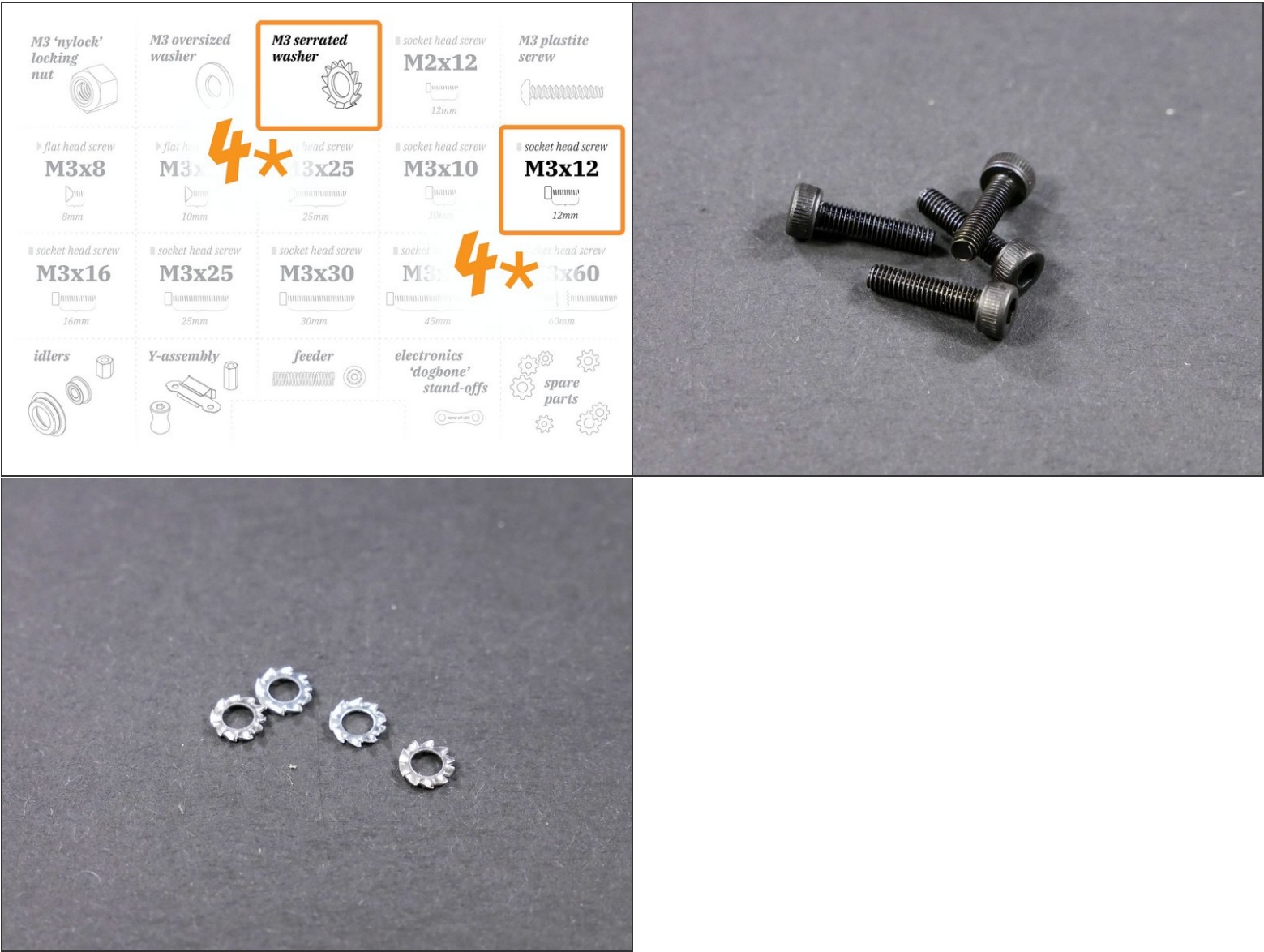
## Step 6



●



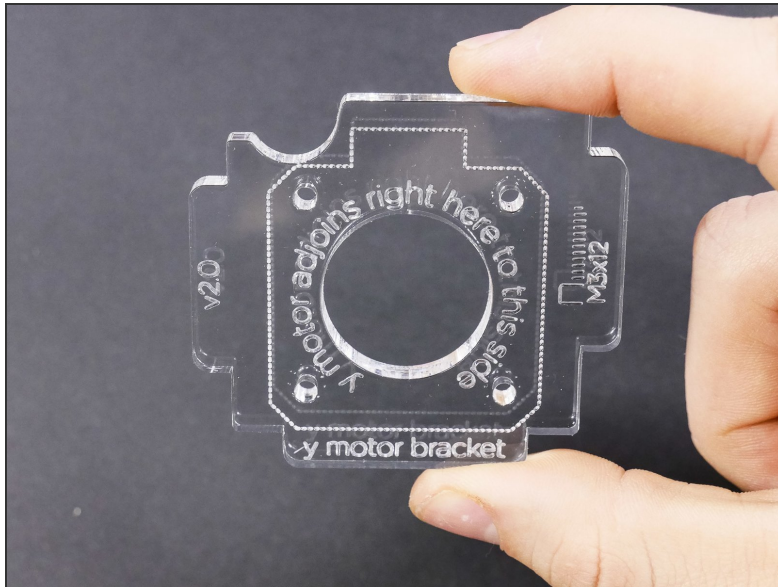
Step 7 — ↳ Install the Y Motor



## Step 8

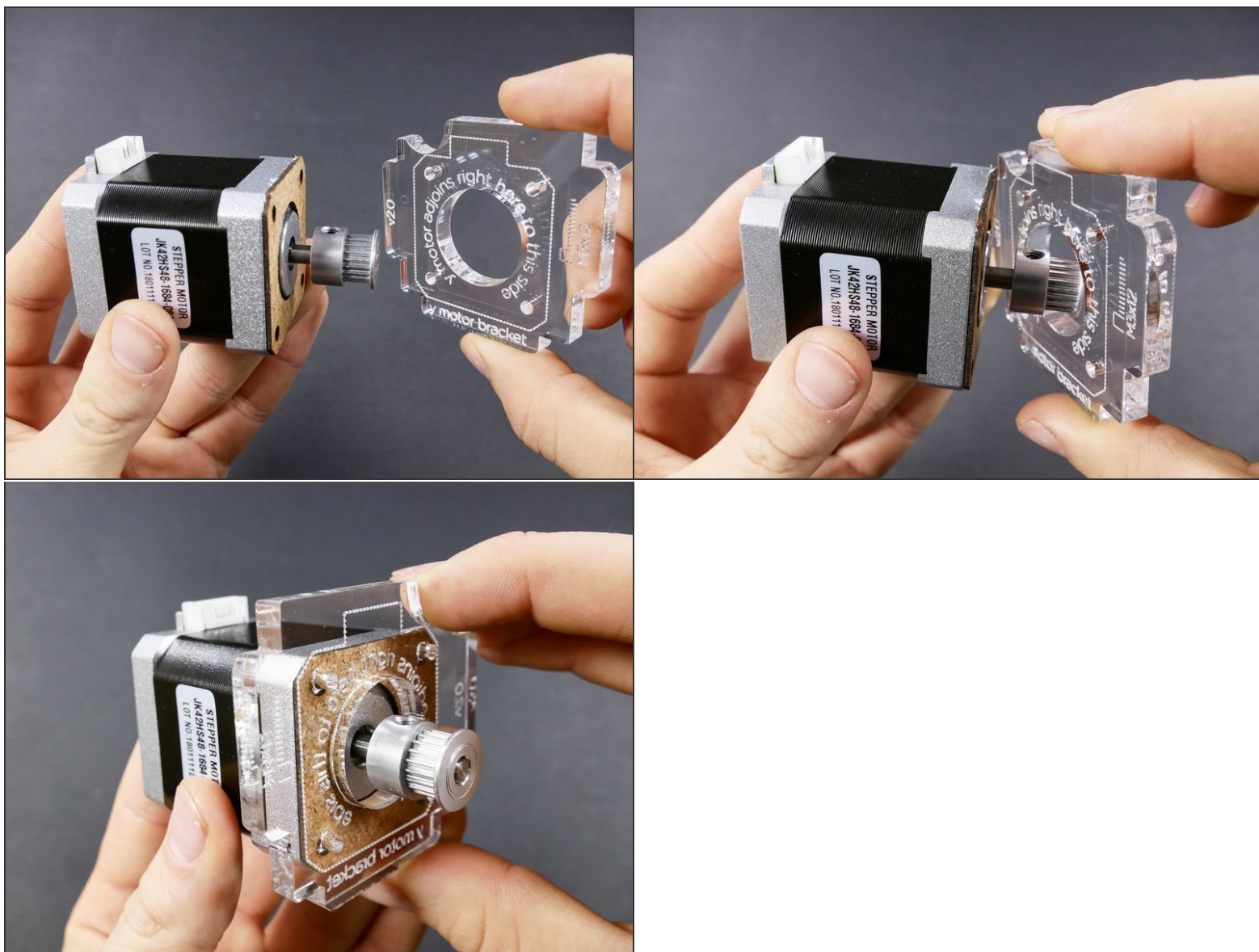


## Step 9

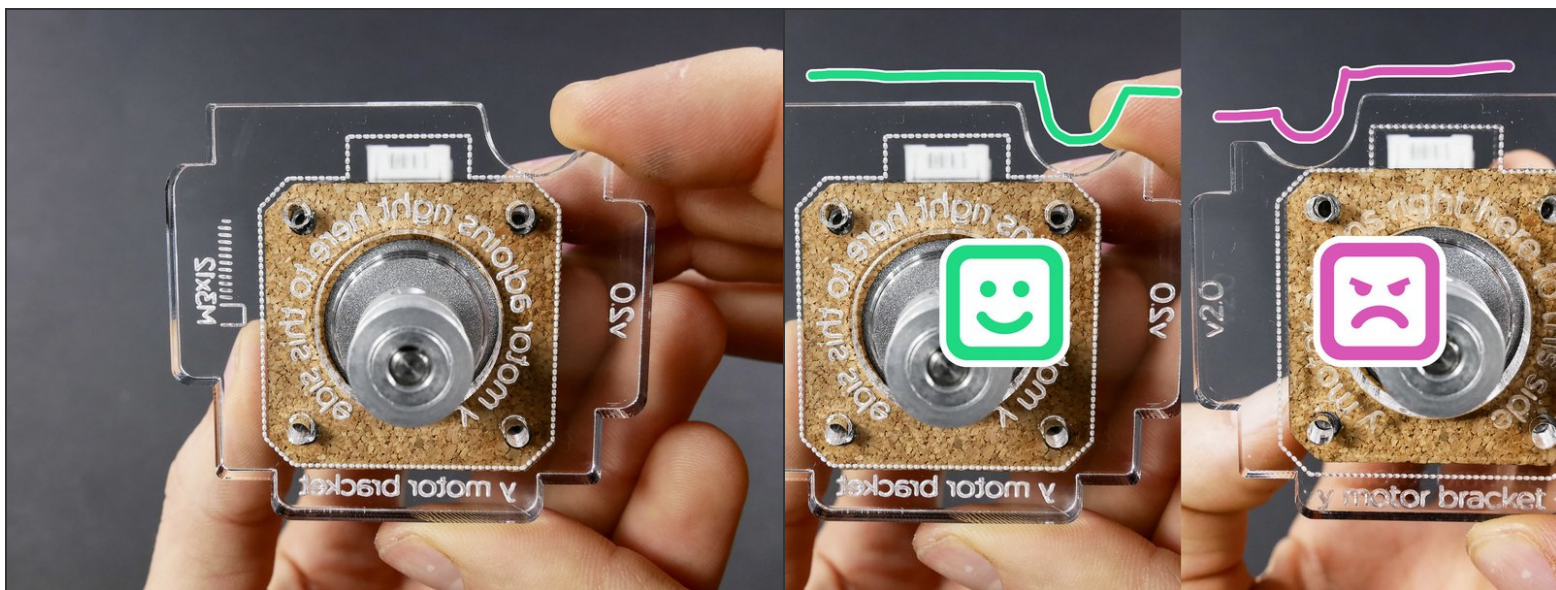




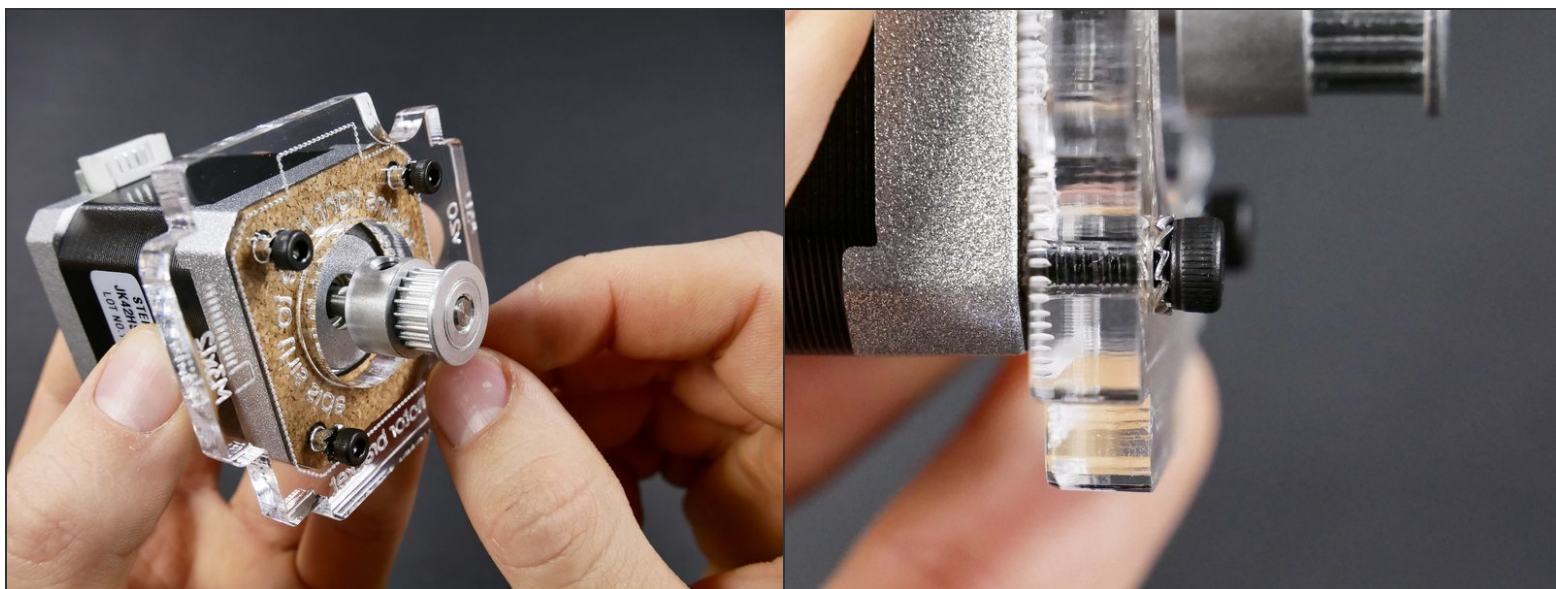
## Step 10



## Step 11

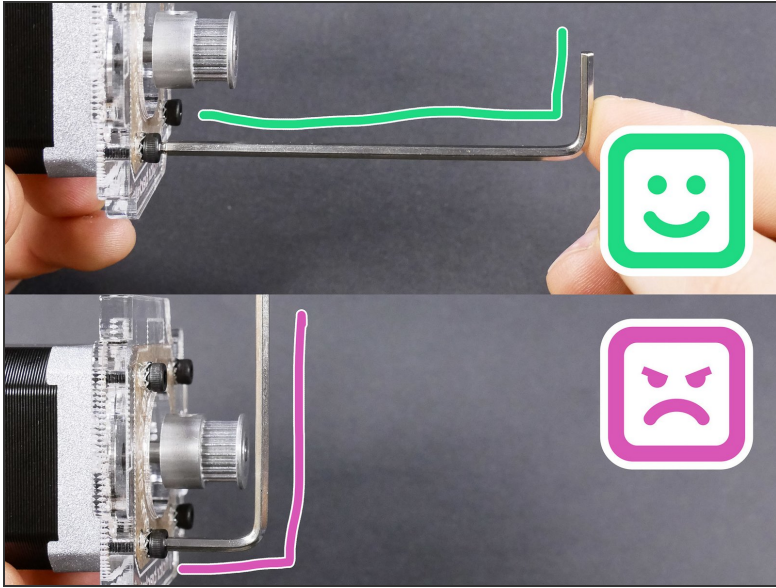


## Step 12



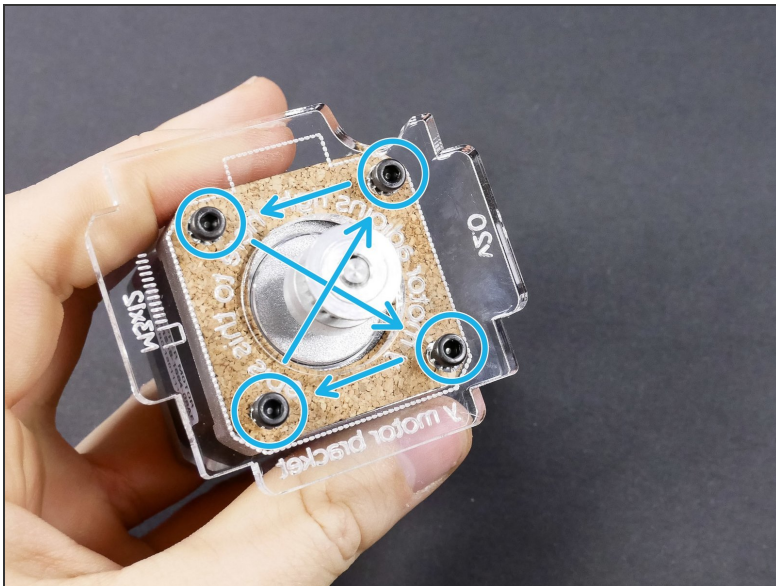


## Step 13



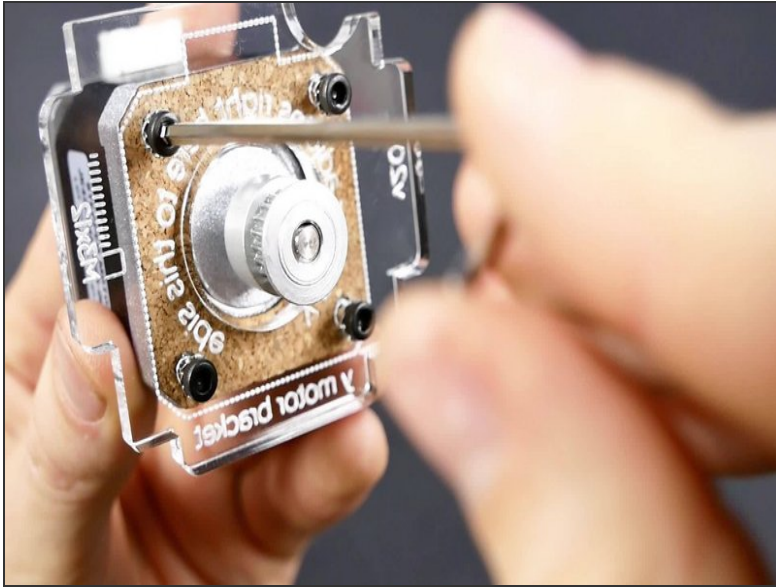
⚠ When tightening against plastic (frame, printed parts...), always hold the **short** side of the hex key to avoid over-tightening and damaging the part.

## Step 14 — ✂ Technique: Cross-Tightening



- ⓘ Avoid alignment issues by tightening the screws **little by little in a diagonal pattern**.
- ⓘ This is called "cross-tightening", and you should do it *every time*\* you have more than one screw to tighten.
- \* *even when you're not building a JellyBOX*



**Step 15 — ► Video: Cross-Tightening (20s)**

- ► Video: Cross-Tightening (20s)

**Step 16 — It's done!**

- The Y motor bracket is assembled. All the naysayers shall be silent now. You are doing this.

## What's Next?

Get back into the [← Makers Kit Build Flow](#) and continue with the next guide.