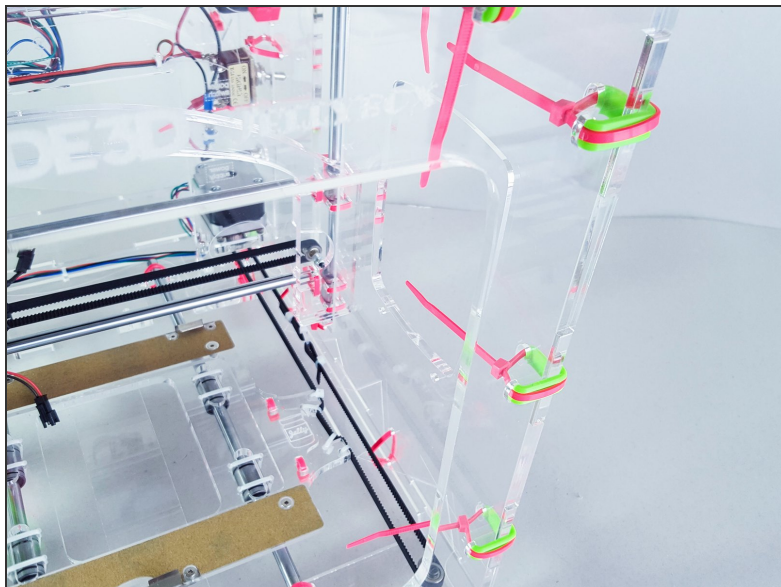




Final Touches

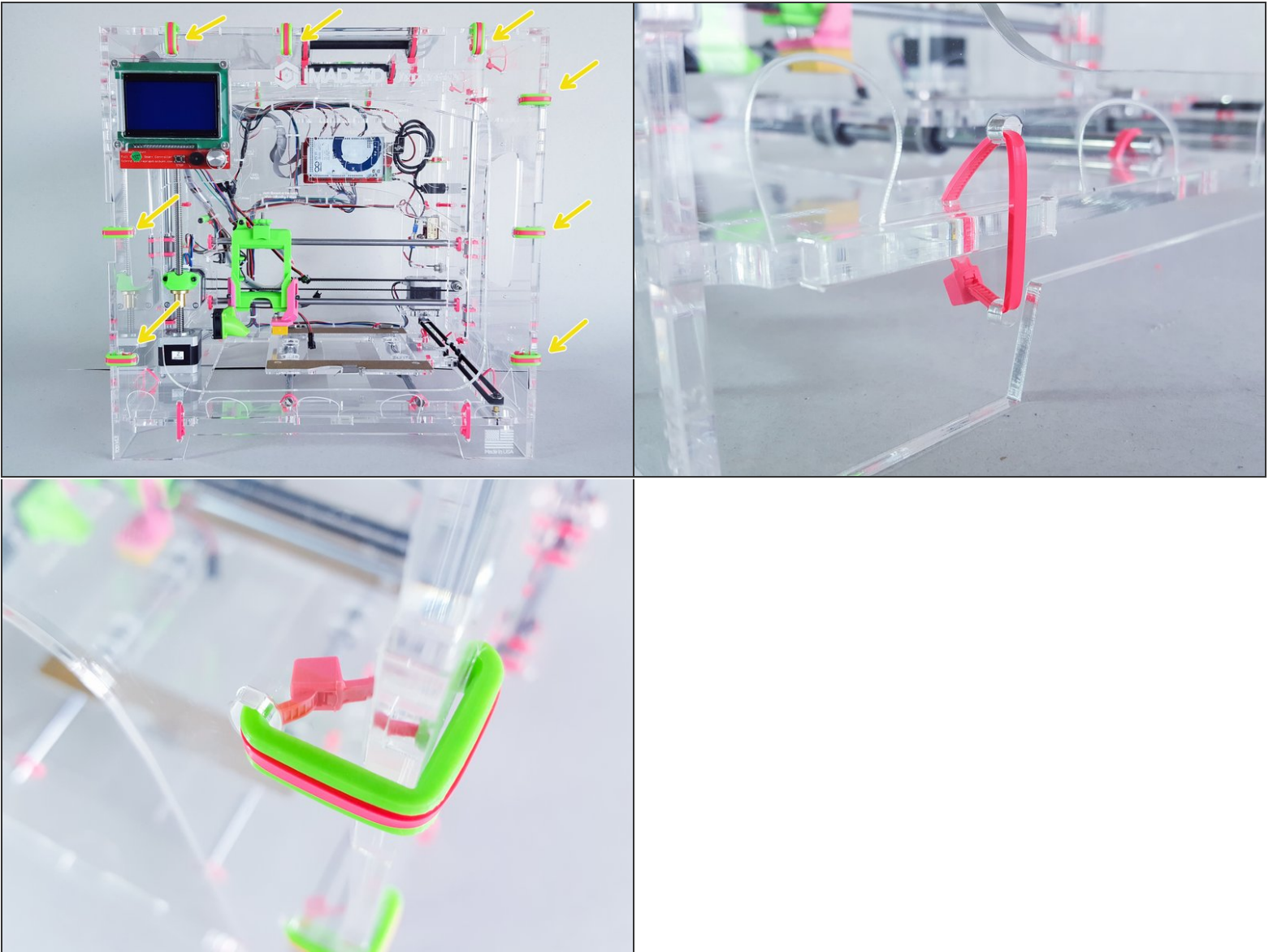


Step 1 — ↳ Lots of Zip Ties



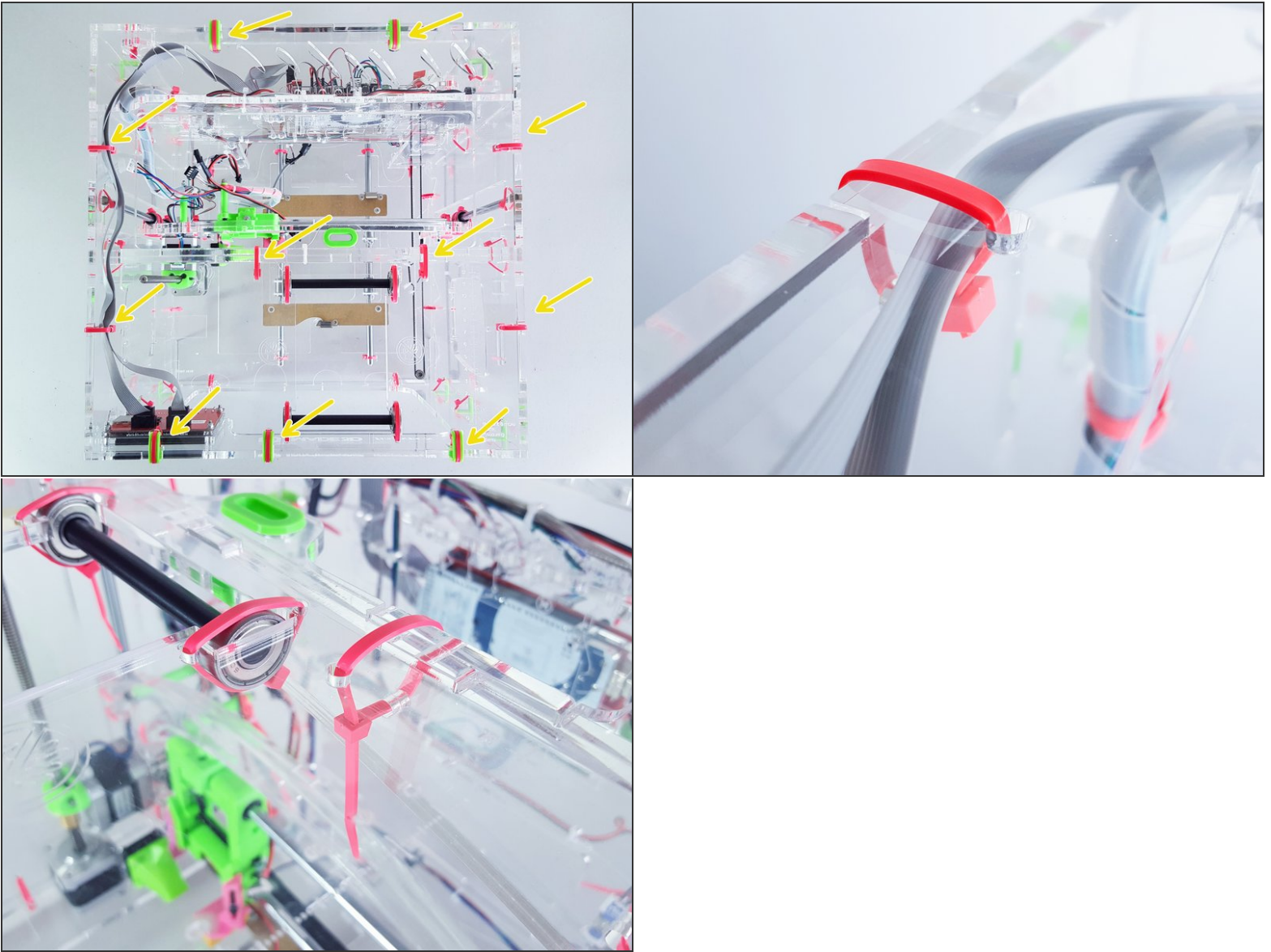
- ✦ Tip: insert all zip ties first, then tighten them all at the same time.
- It's much faster than inserting and tightening each zip tie separately.

Step 2



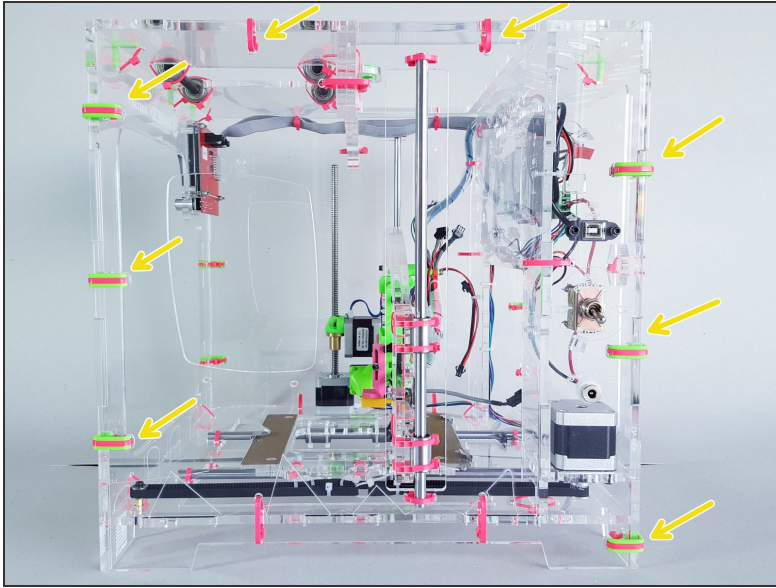
- 5" zip ties
- Nothing complicated here.

Step 3



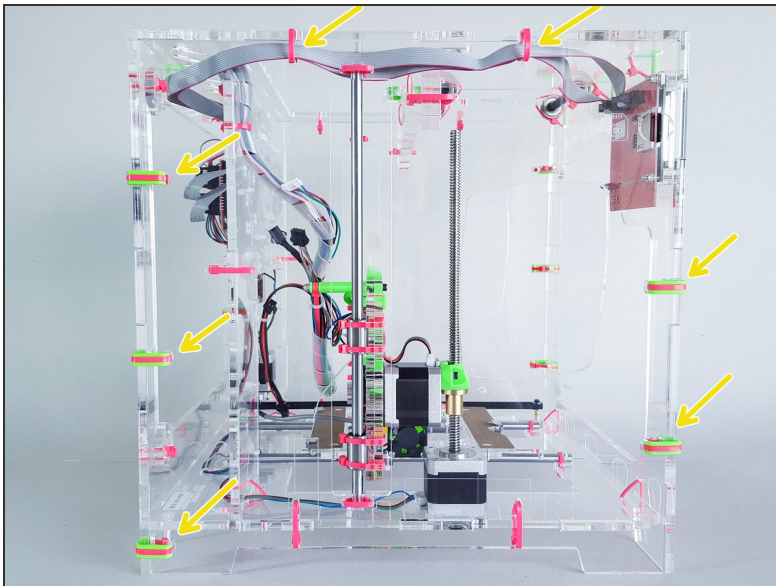
- 5" zip ties
- On the left side, the zip ties double as a holder for the LCD wires.
- Position the zip tie head in the corner between the Brace and the Top. This is a carrying handle - you don't want the head on the outside scratching you.

Step 4



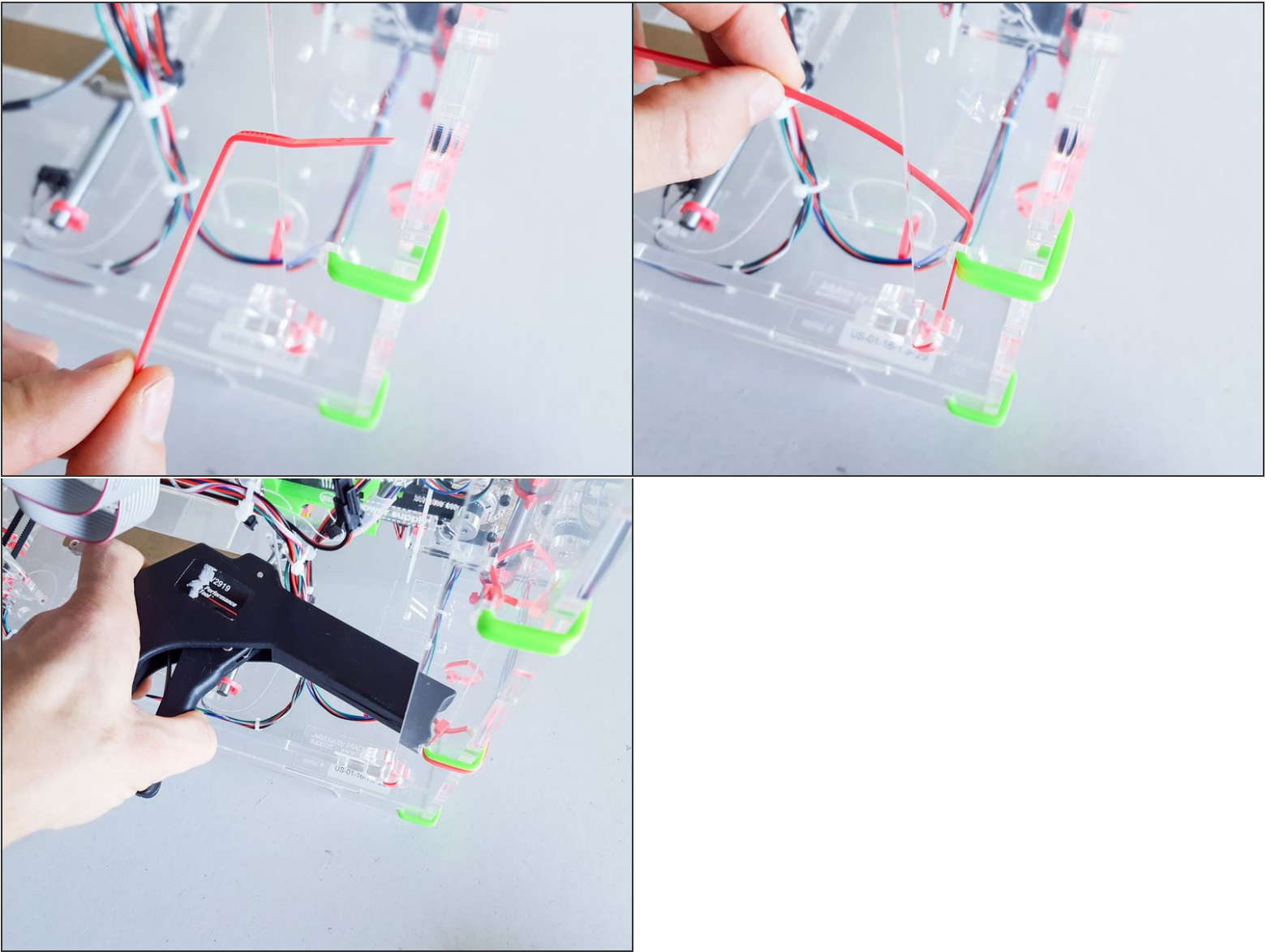
- 5" zip ties

Step 5



- 5" zip ties

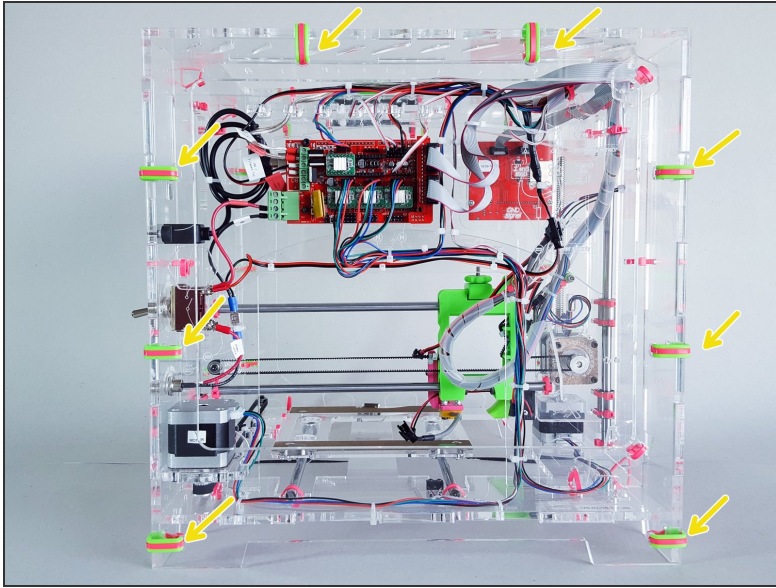
Step 6



★ Tip: If you're using a zip tie gun, you will find attaching the Back easier if you insert the zip ties in the direction towards you first.

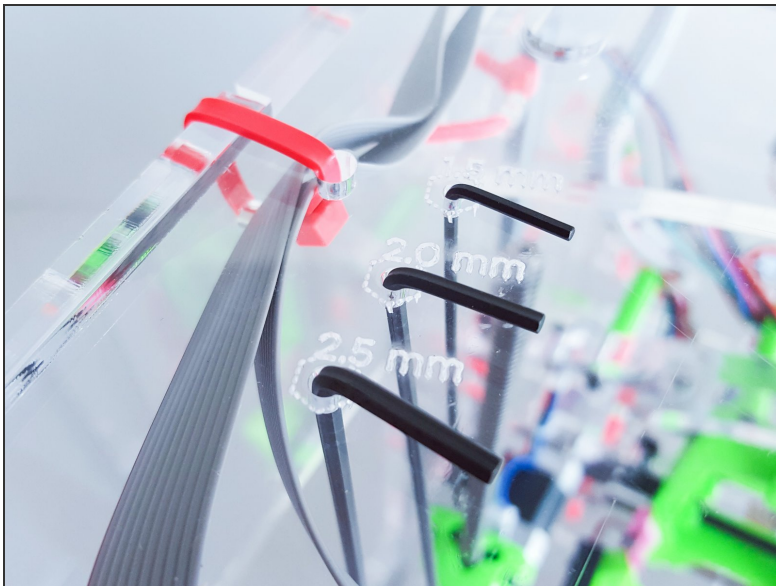
- Otherwise you won't be able to use the zip tie gun on the Back (which is fine, too).

Step 7



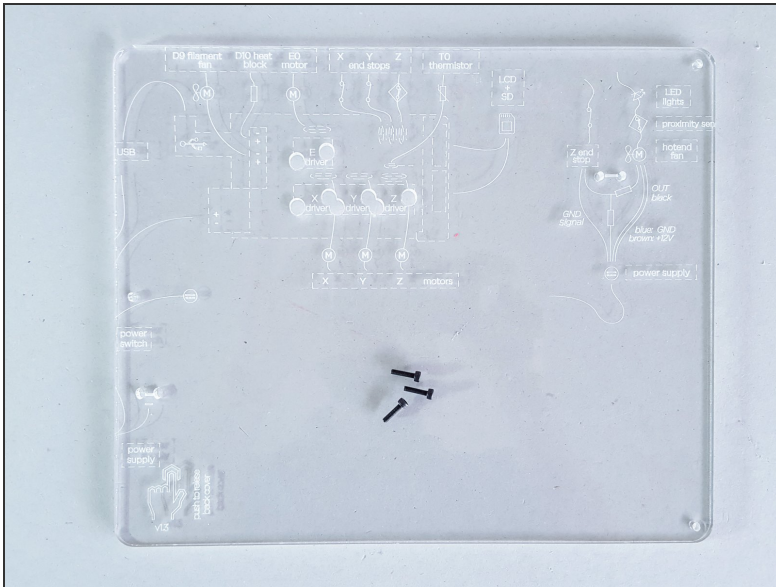
- 5" zip ties

Step 8



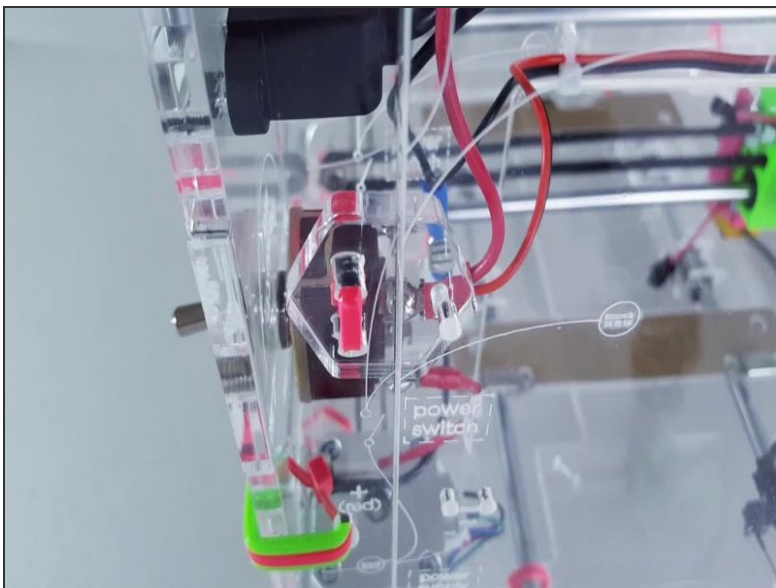
- ★ Random tip: there's a holder for your hex keys on the top right :-)

Step 9 — ↳ Install the Back Cover



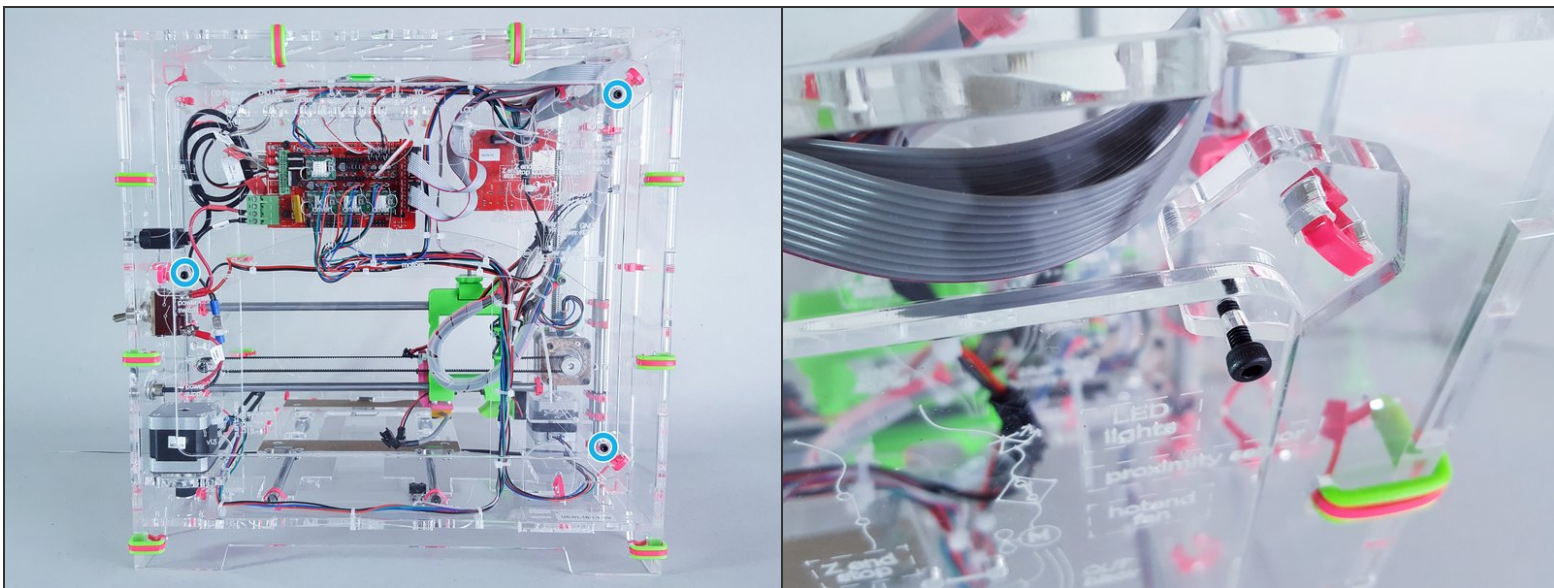
- Acrylic Back Cover
- M3x12 screws

Step 10



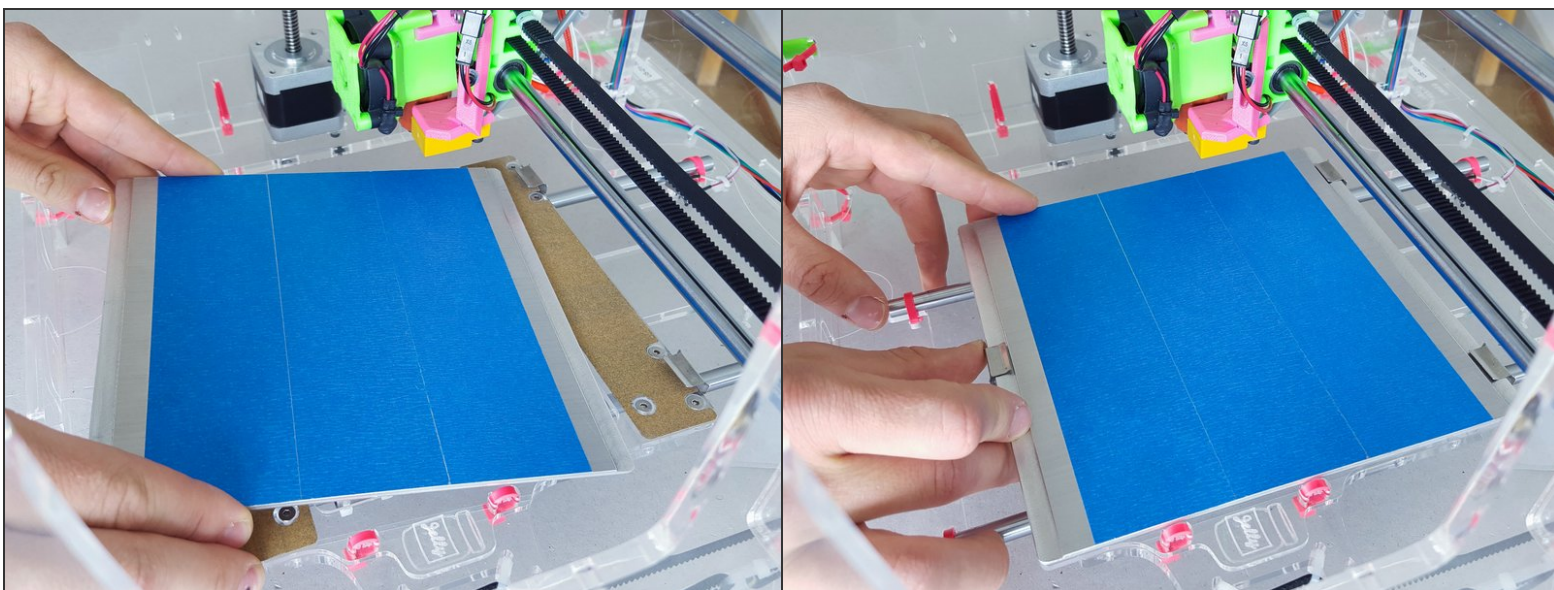
- The first time you try to attach the back cover, you may need to align the holes.

Step 11



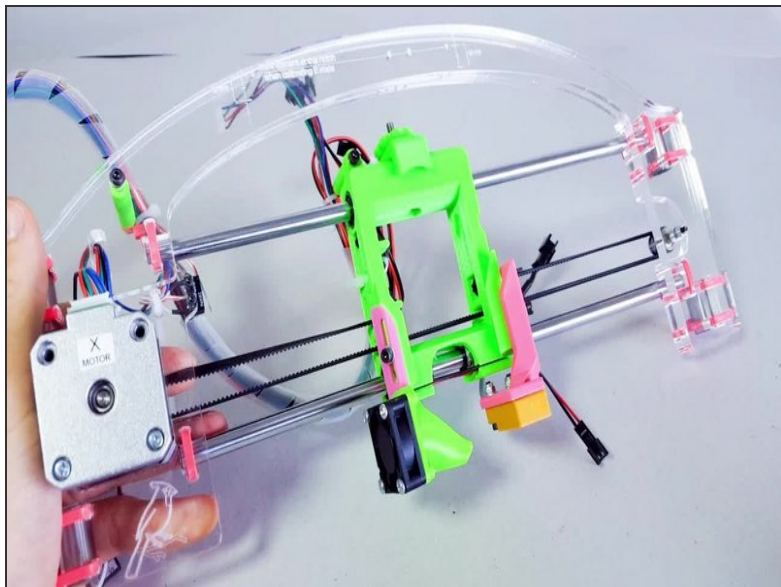
- M3x12 screws

Step 12 — ↪ Insert the Build Plate



- Insert the aluminum build plate.

Step 13 — ↳ Insert the Extruder



- Insert the Extruder into the X carriage.
- ✦ Don't forget to connect all the wires.
- ⚠ Do not pinch the hotend wires. Make sure they go underneath the x carriage