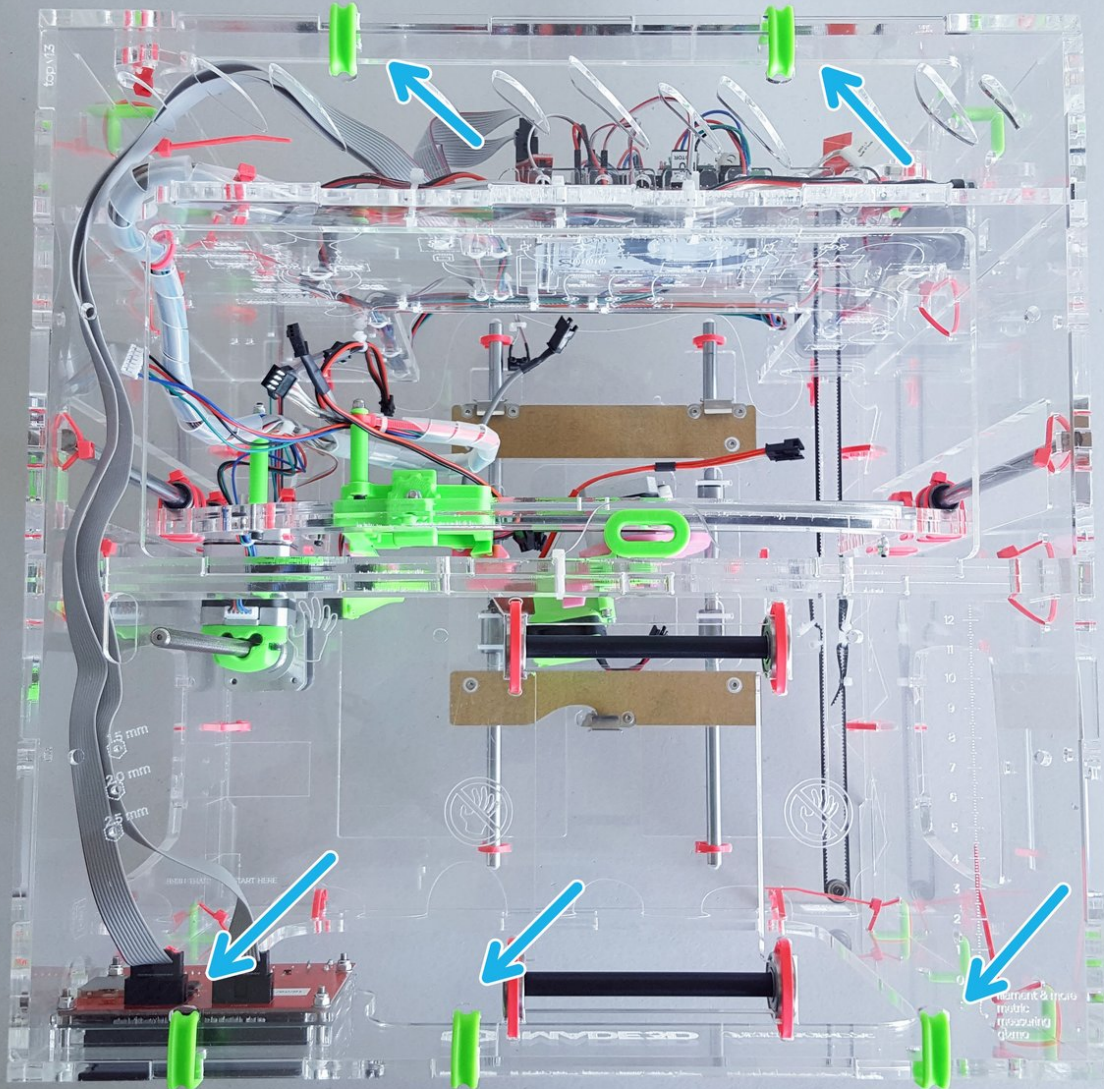
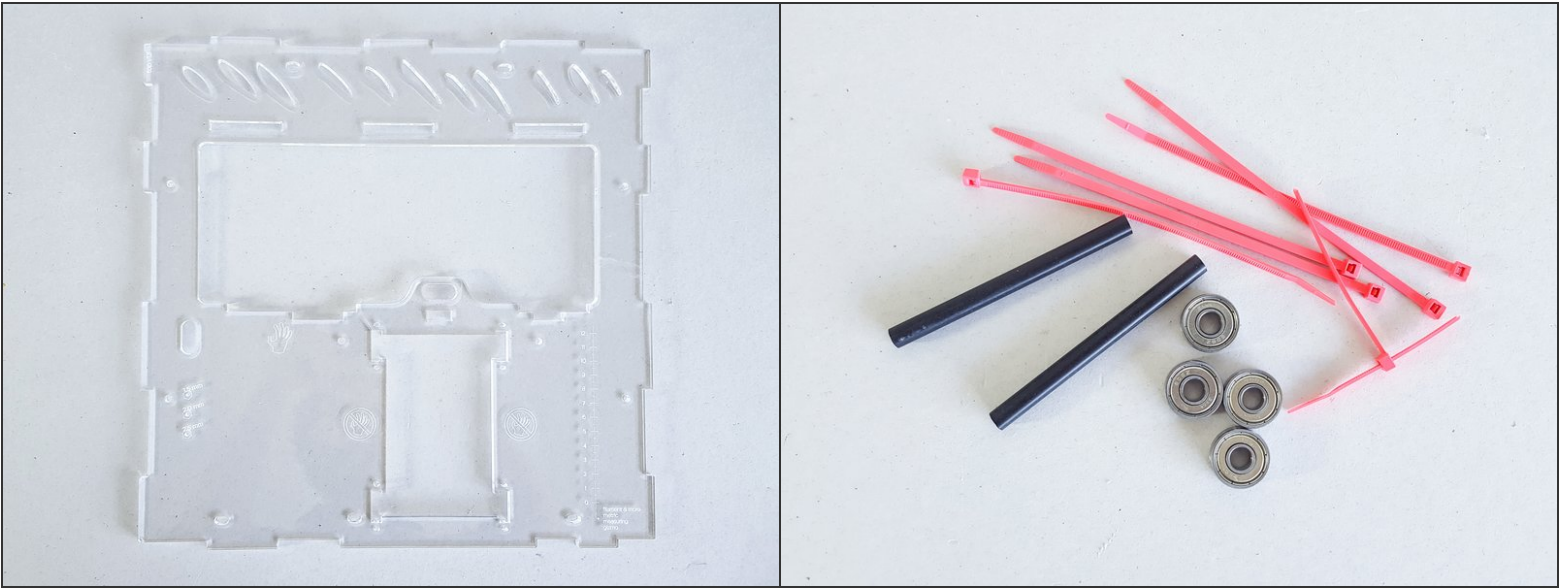




Install the Top



Step 1 — ↳ Prepare the Top



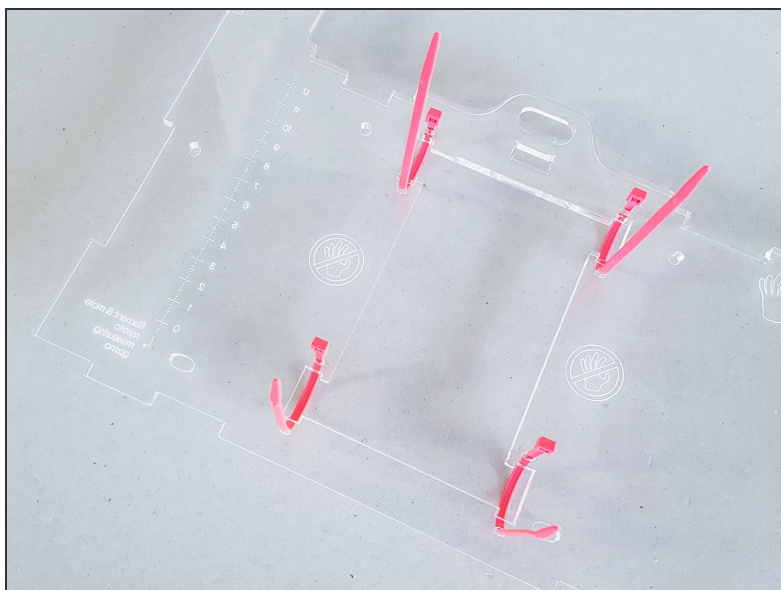
- Acrylic Top
- Skate bearings
- Spool roller rods

Step 2



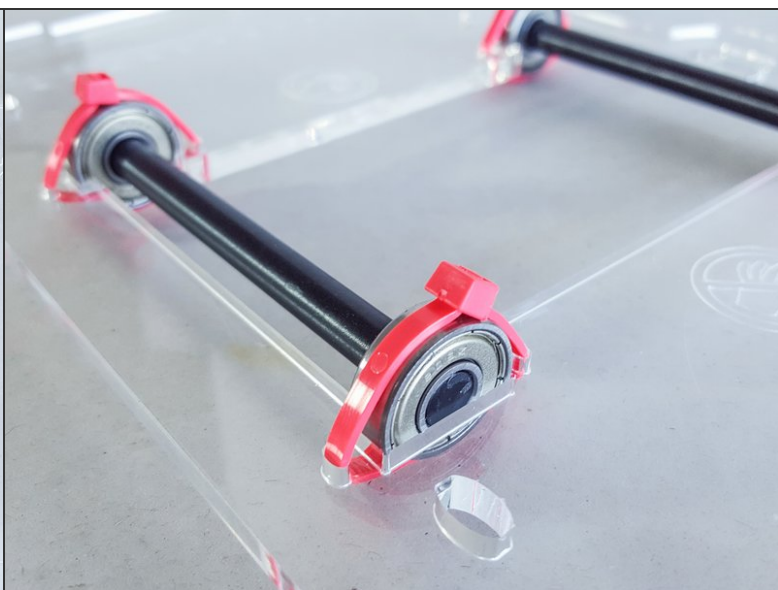
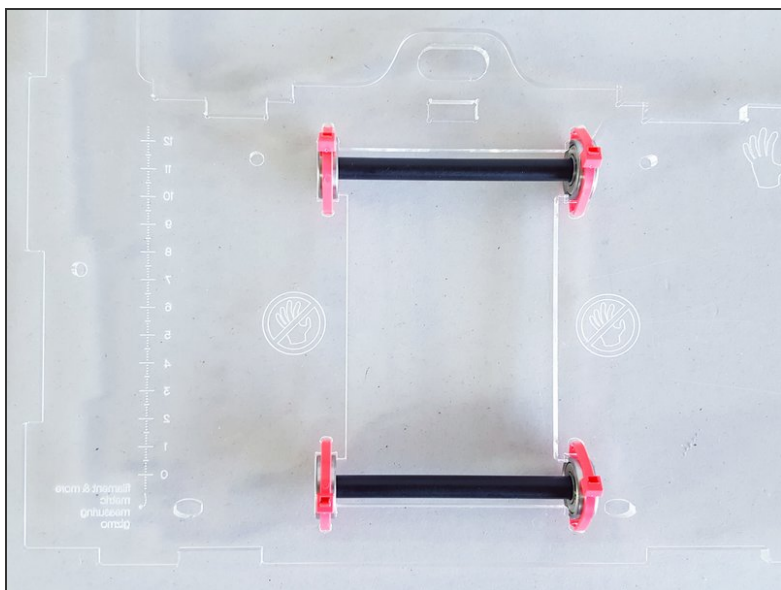
- Pre-install the bearings onto the rods.

Step 3



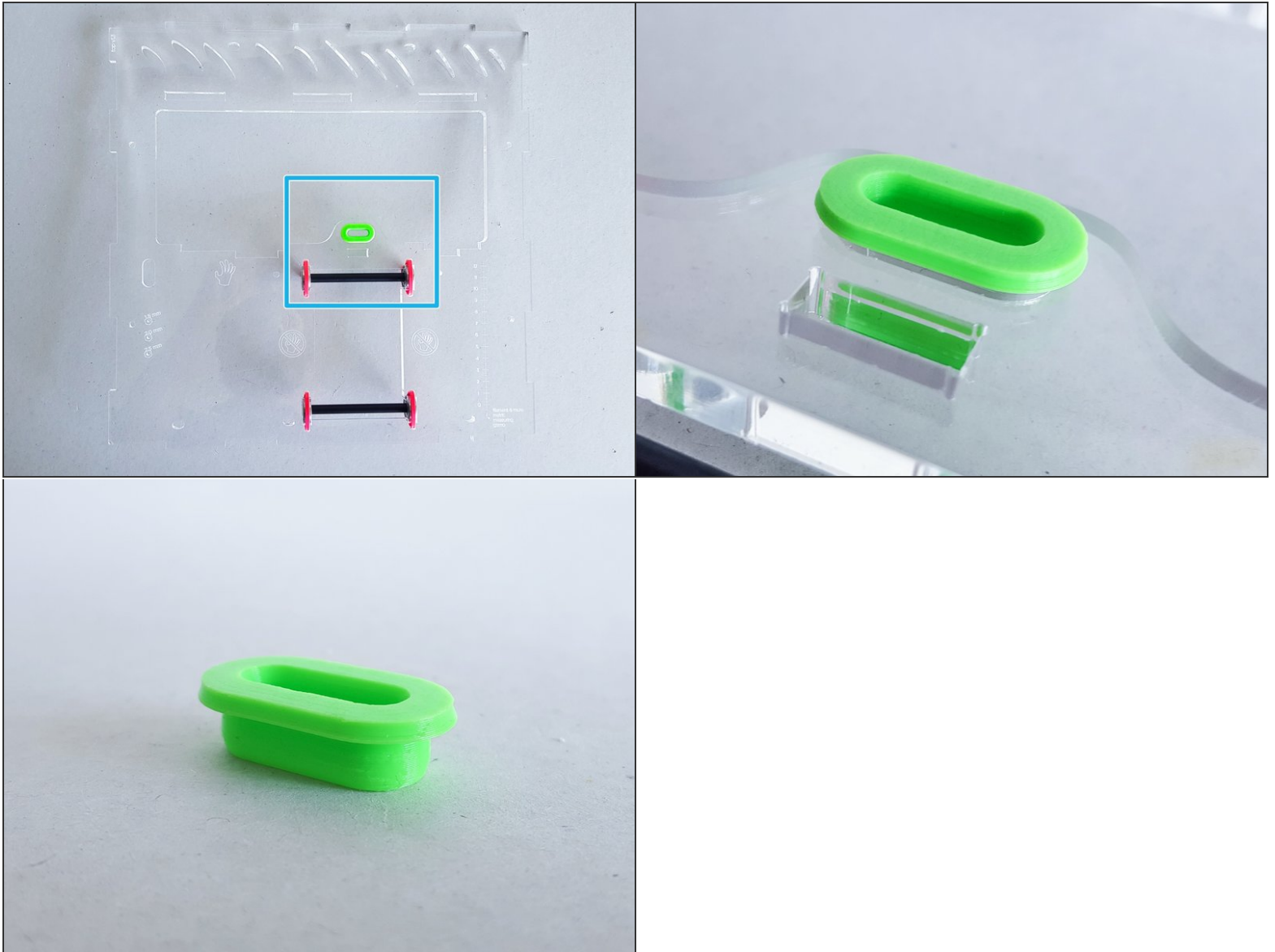
- Pre-install 5" zip ties into the Top.
- In this picture, the Top is upside down; notice the etched writing is reversed.

Step 4



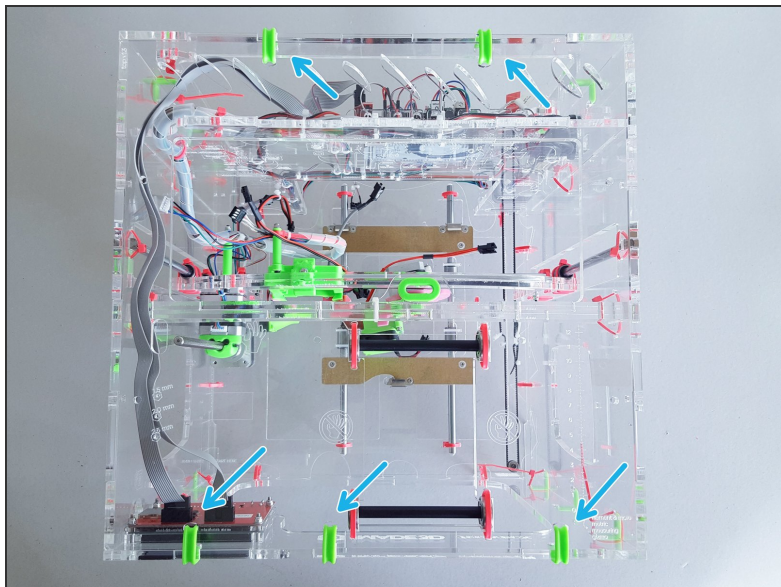
- Ta-daaa.

Step 5



- Snap the filament guide in place.

Step 6 — ↪ Install the Top



- Green corner clips.