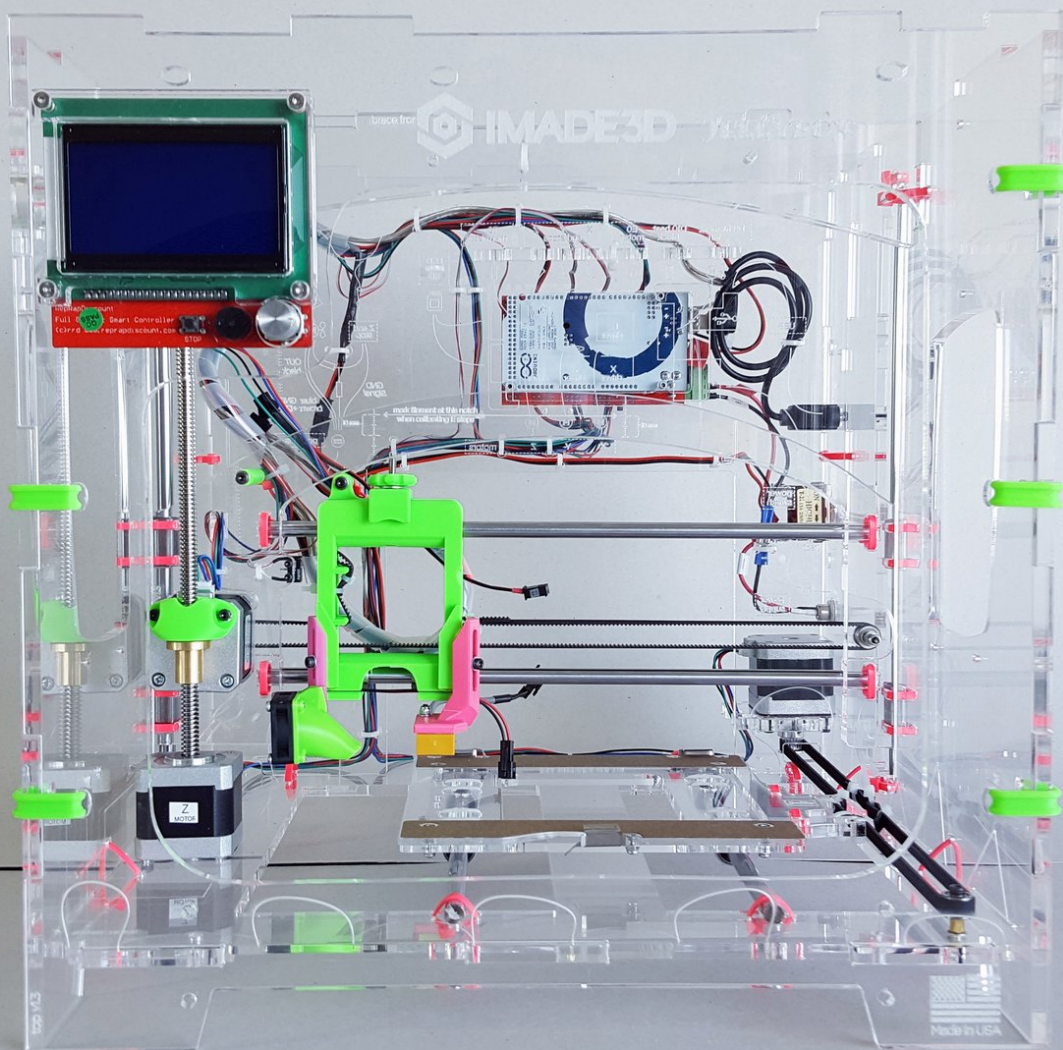




Install the Front



Step 1 — ↳ Prepare the Front

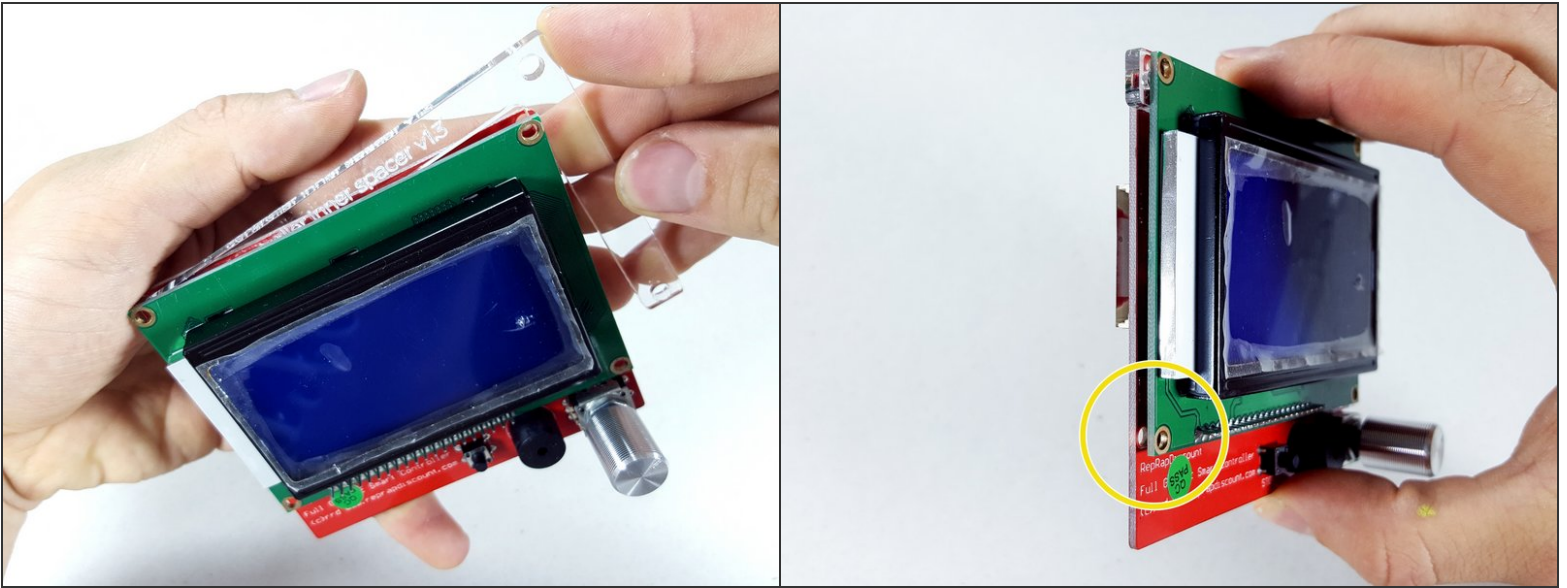
- LCD controller
- Acrylic Front
- Acrylic Inner and Outer Spacer (2)
- M3x25 flathead screws (4)
- M3 washers (4)
- M3 locknuts (4)

Step 2



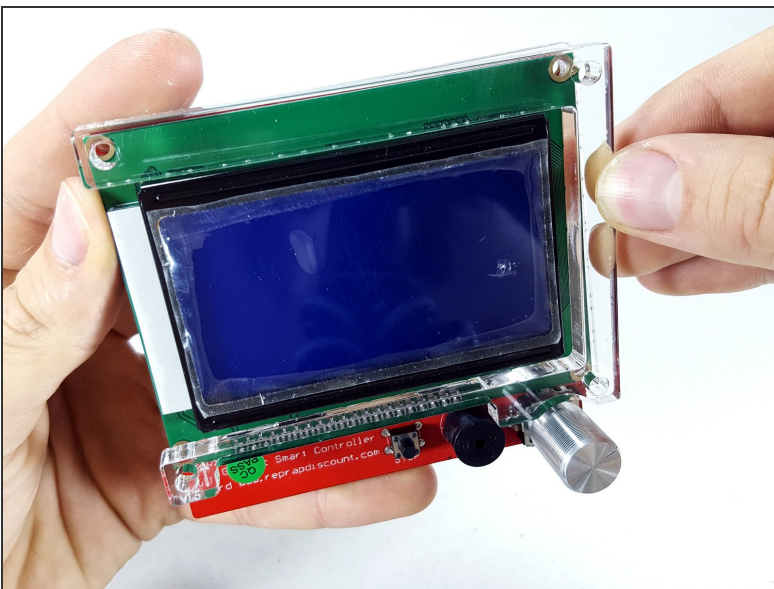
- Peel off the white sticker from the controller's buzzer.
- 'Cause it's all about the looks.

Step 3



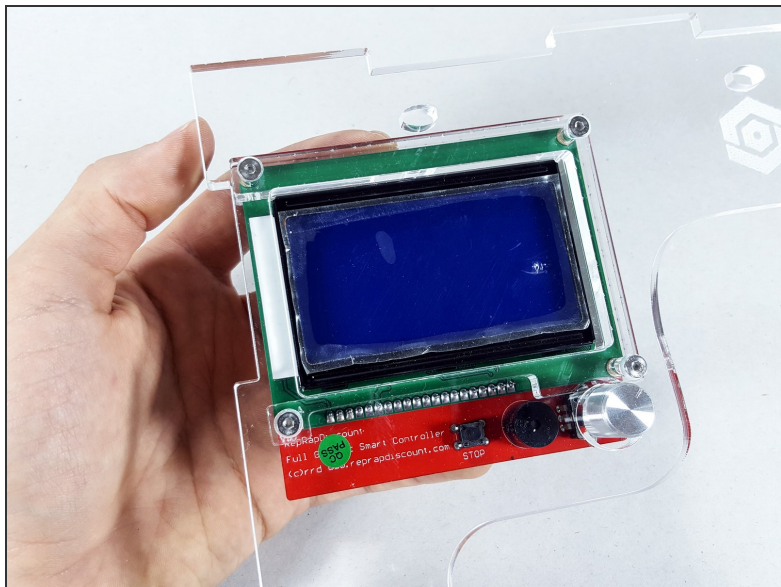
- Sandwich the thin **3mm** LCD spacer between the two layers of the controller.
- Note that the bottom left hole is not covered by the spacer.

Step 4



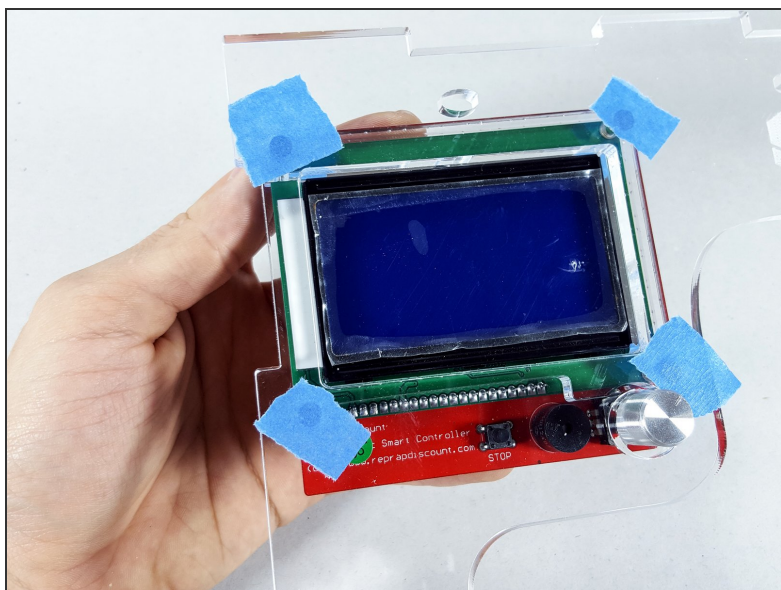
- Align the **6mm** spacer to the front of the controller.

Step 5



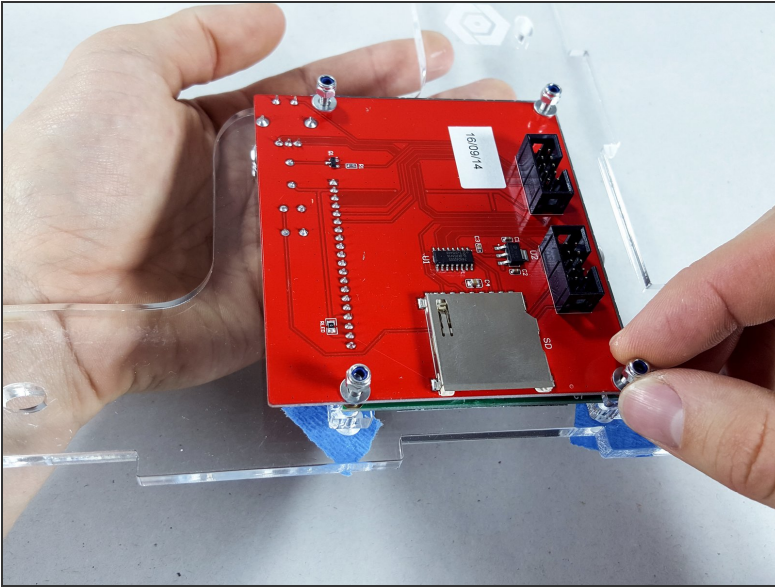
- Attach the LCD controller to the front acrylic piece.

Step 6



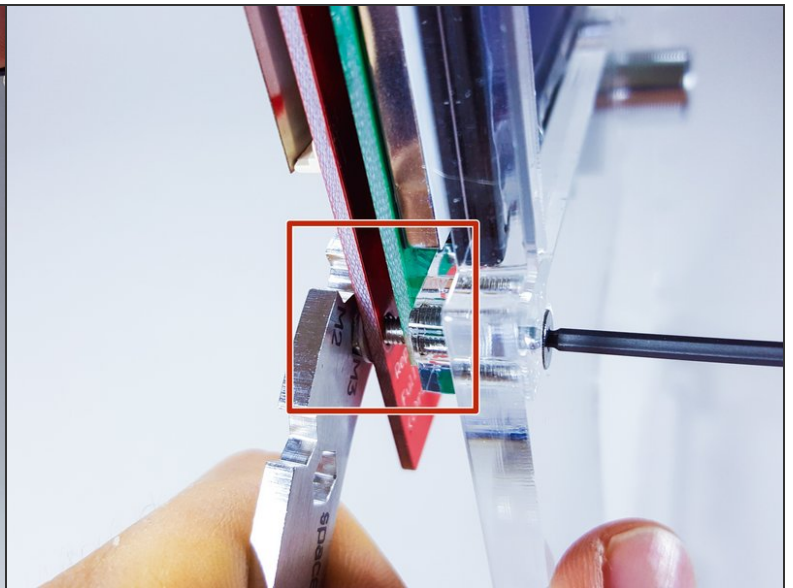
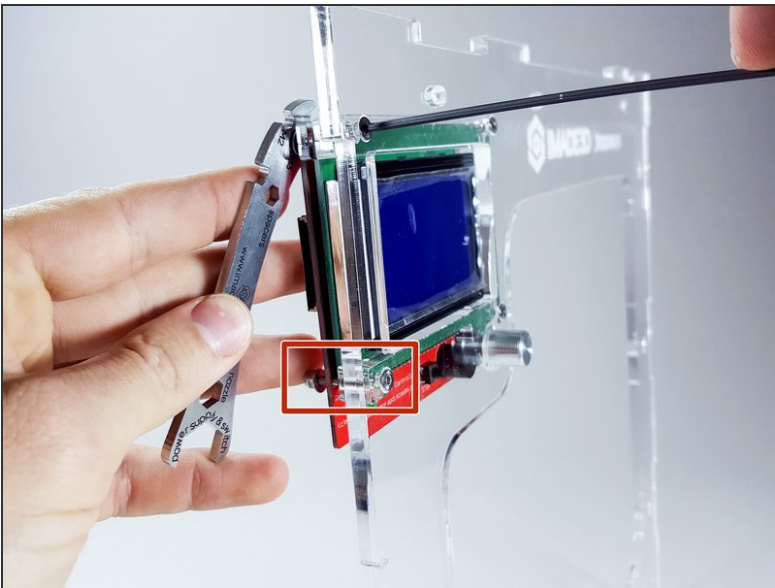
- Optional: hold the screws in place with a bit of (blue) tape.

Step 7



- M3 locknuts (4)

Step 8

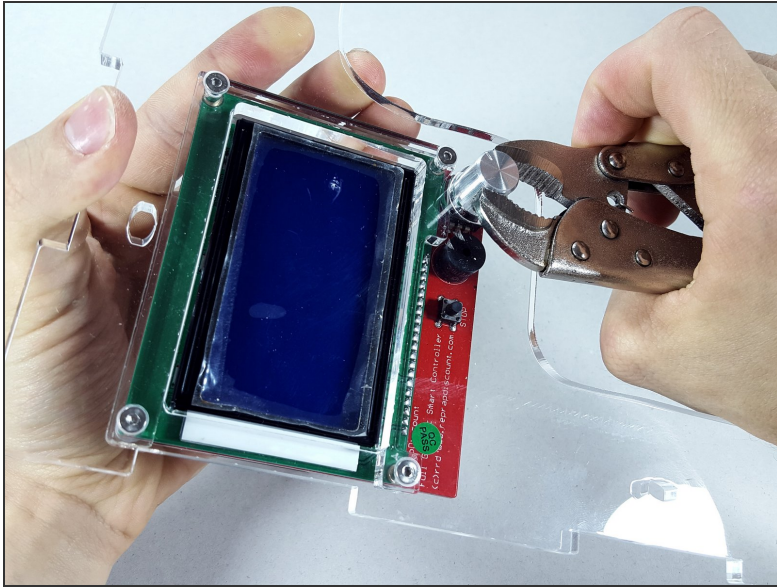


- Tighten the screws.



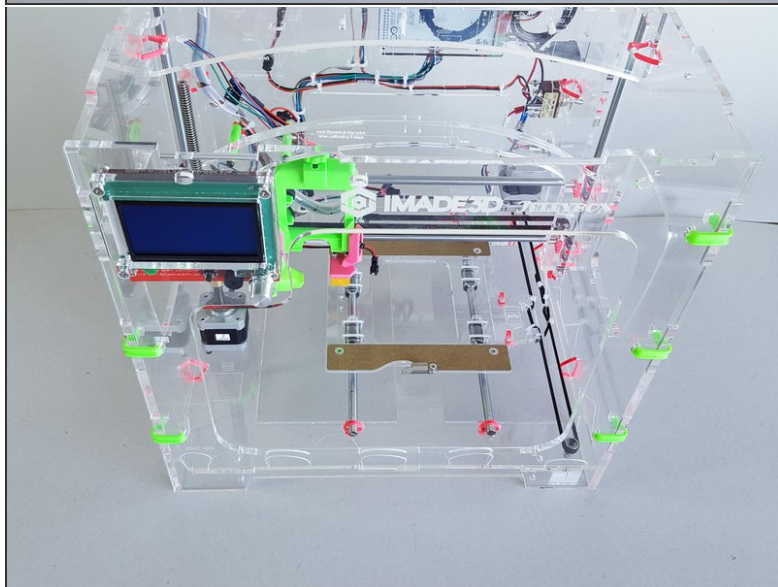
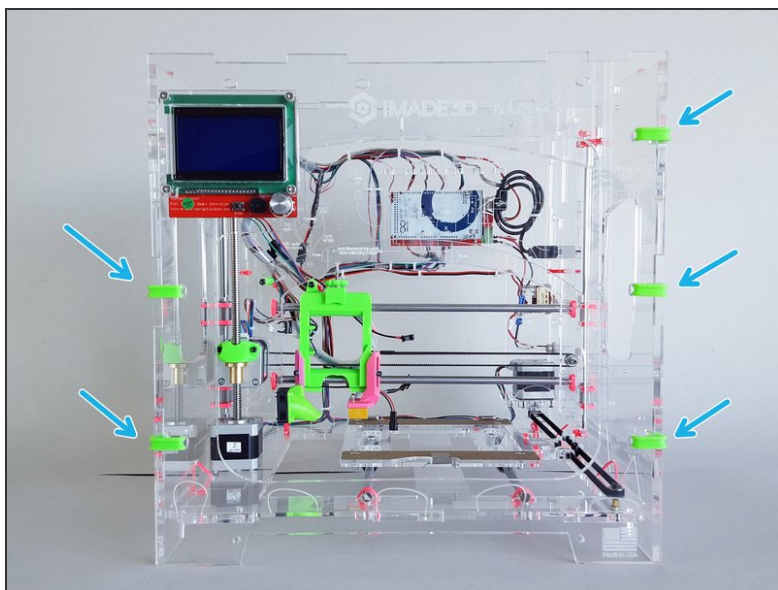
Do not over-tighten the bottom-left screws as there is no inner spacer. You could damage your controller!

Step 9



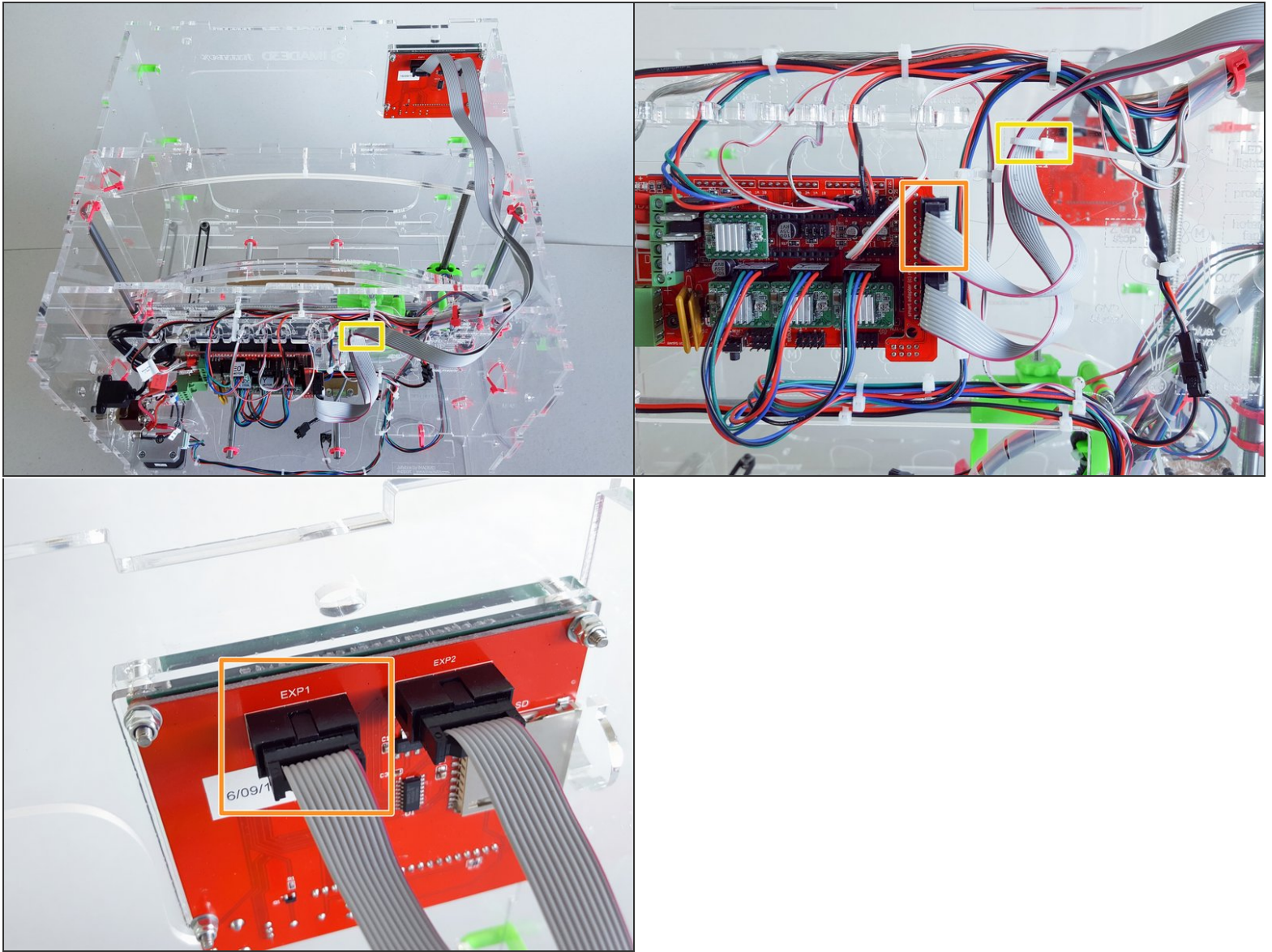
- Ensure the Knob is Working Correctly
- IF you have troubles fully pressing the knob (there should be an audible click), or if the knob does not rotate smoothly, pull it out a bit with vise grips, and all will be well.

Step 10 — ↪ Install the Front



- Slap the front onto the printer and secure with the green corner clips.

Step 11 — Wire up the LCD Controller



- 4" zip tie
 - Do not over tighten. Leave quite loose.
- The EXP 1 connector from the LCD needs to connect with the EXP 1 connector on RAMPS. (And EXP 2 matches EXP 2). Else the LCD will not turn on. (But neither it will get damaged.)