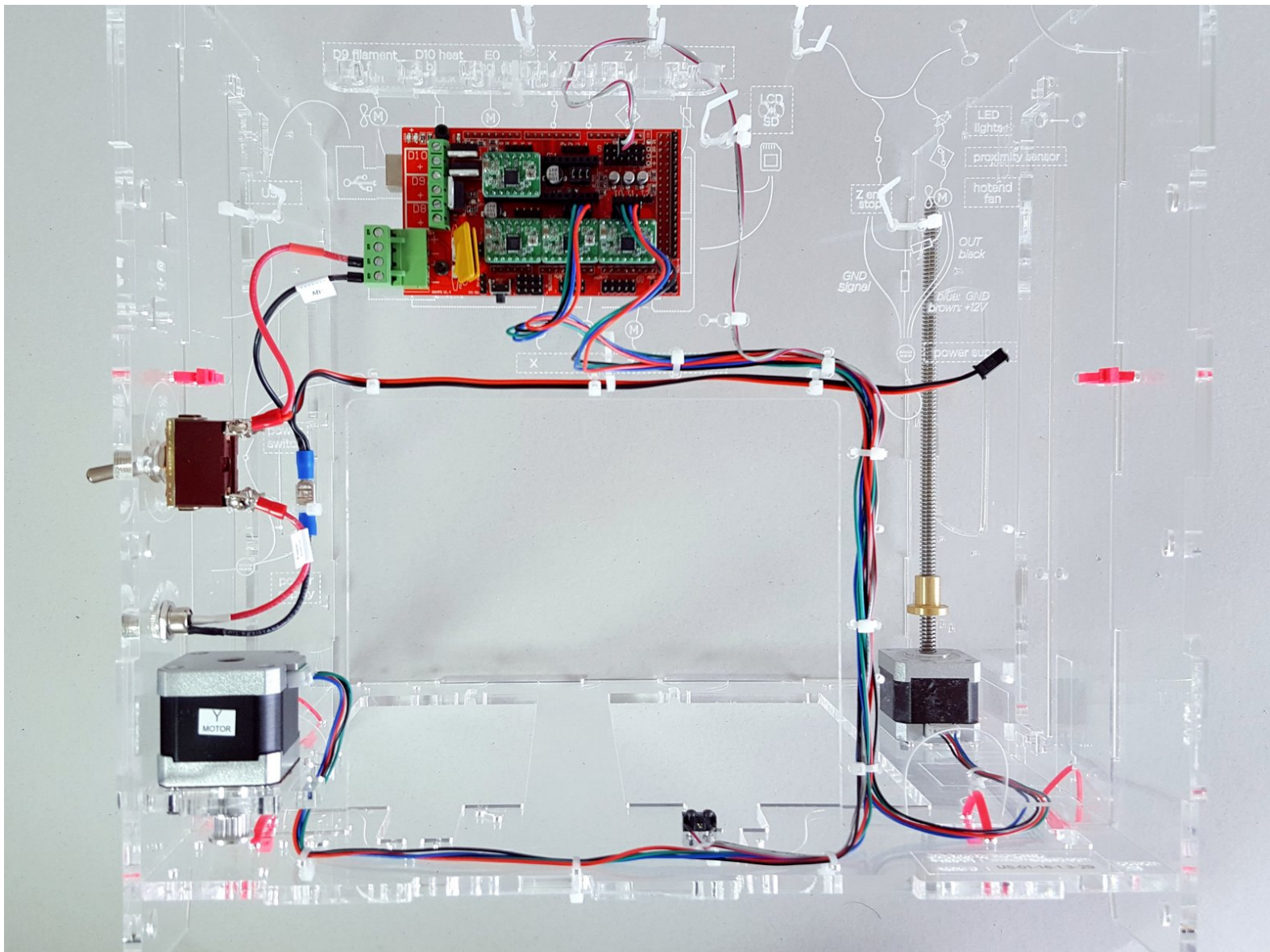


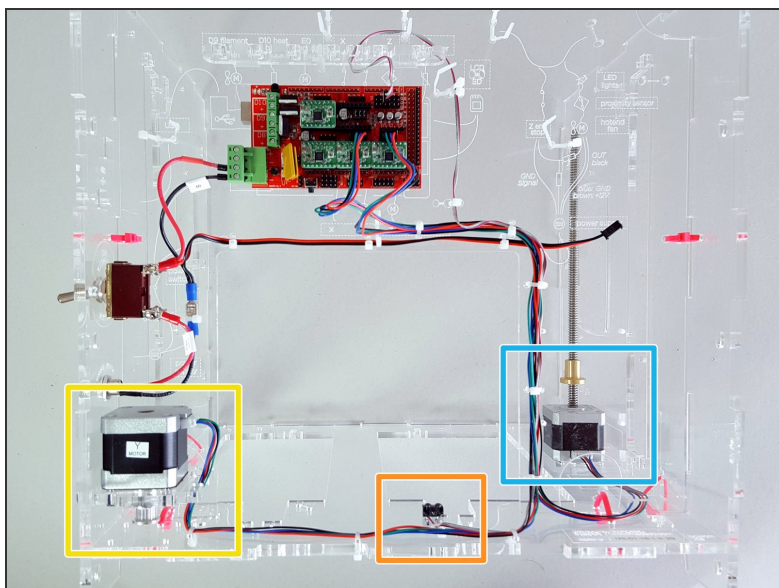


YYZ - Y/Z Motors + Y EndStop

We install the Y and Z motors, and also the Y EndStop. These components go together because the wires run together on the inner back.

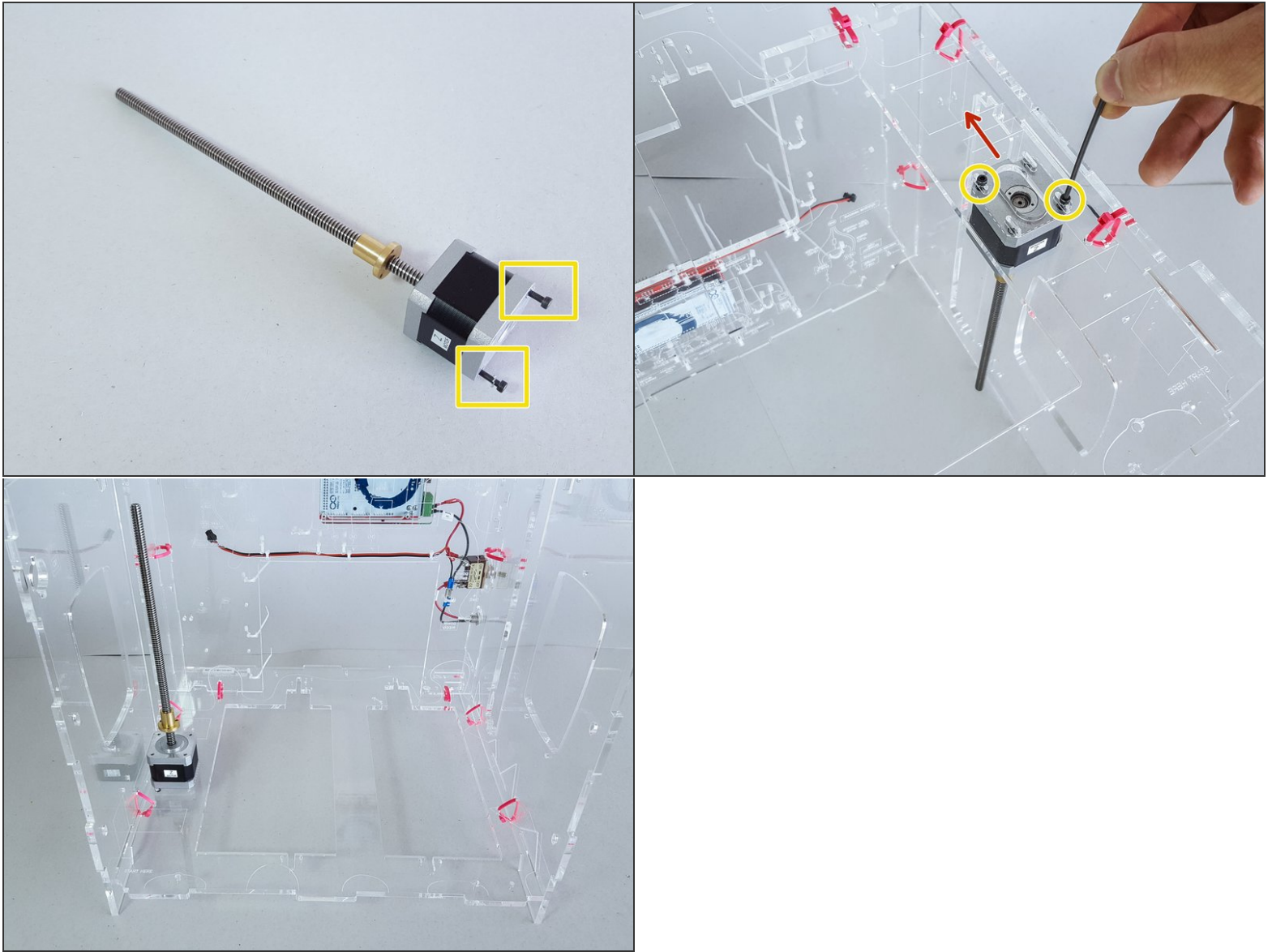


Step 1 — YYZ - Y/Z Motors + Y EndStop



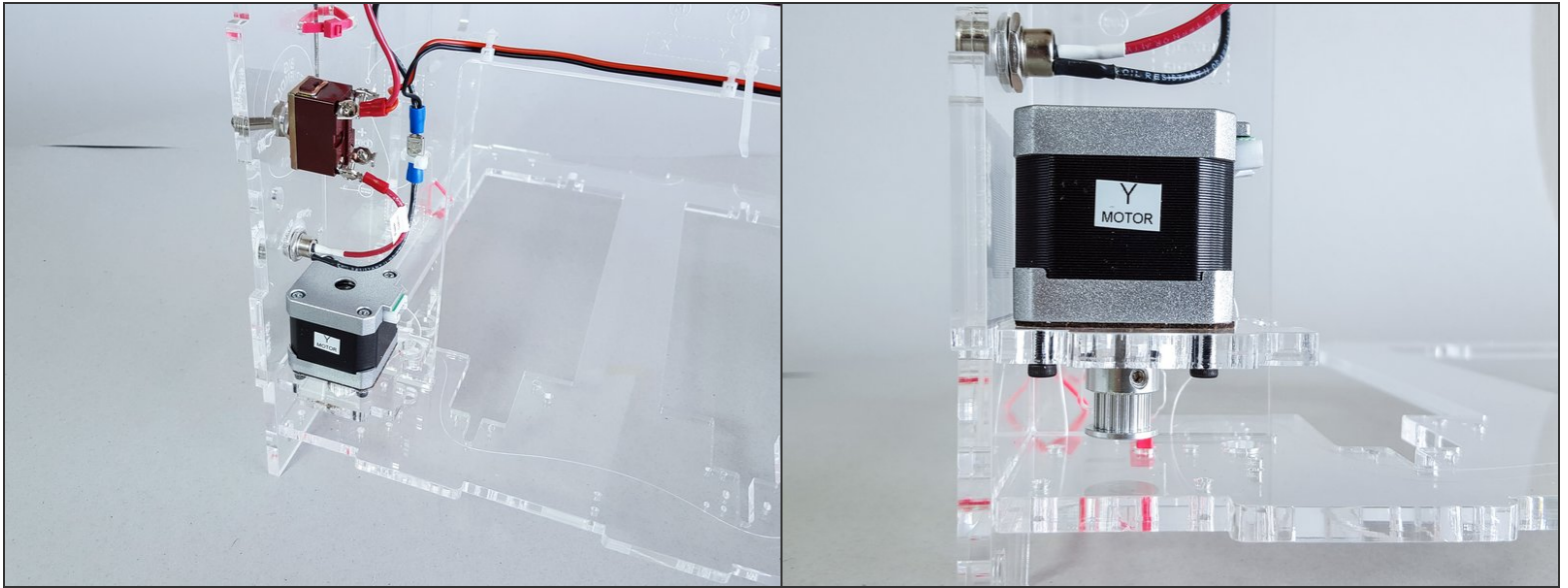
- Y Motor Bracket
- Y EndStop
- Z Motor with a leadscrew
- ...and related wires

Step 2 — Attach the Z Motor



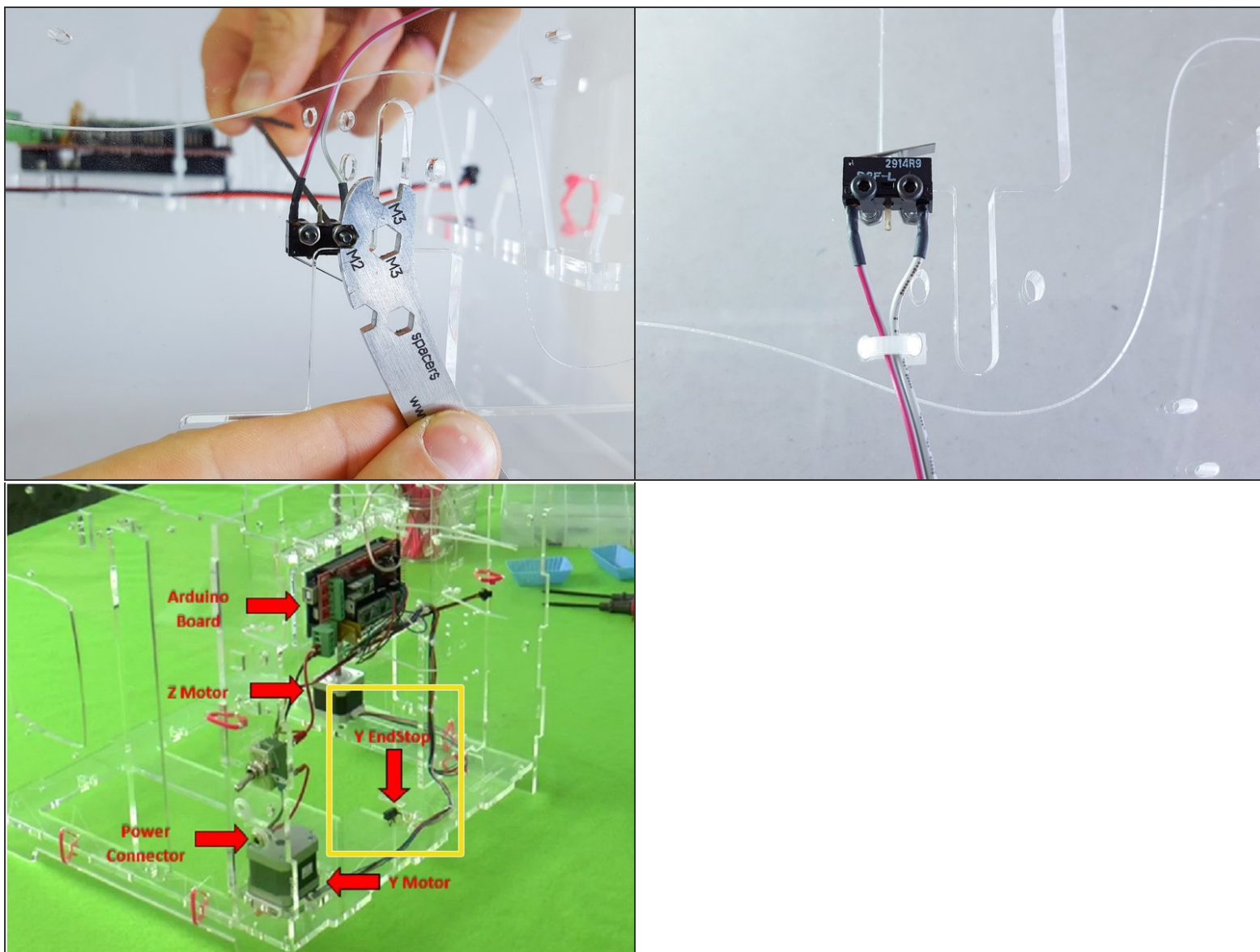
- M3x45 screws.
- Make sure the connector on the Z Motor is facing towards the back of the acrylic unit.
- You don't need to accurately position the motor at this stage; just tighten the screws a bit so the motor doesn't flap around.

Step 3 — Attach the Y Motor



- Snap the Y Motor into place (with the pulley facing down) right under the power supply connector.

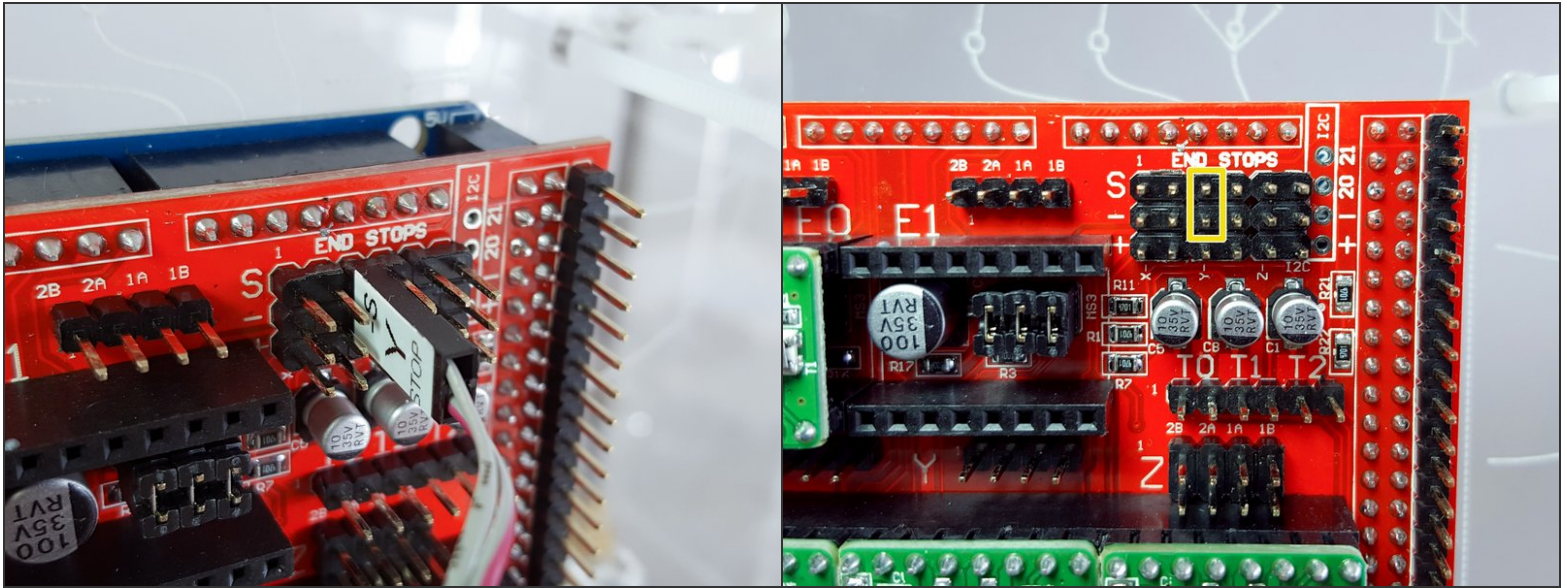
Step 4 — Attach the Y EndStop



- Y EndStop
- M2x16 screw (2)
- Regular M2 nut (2)

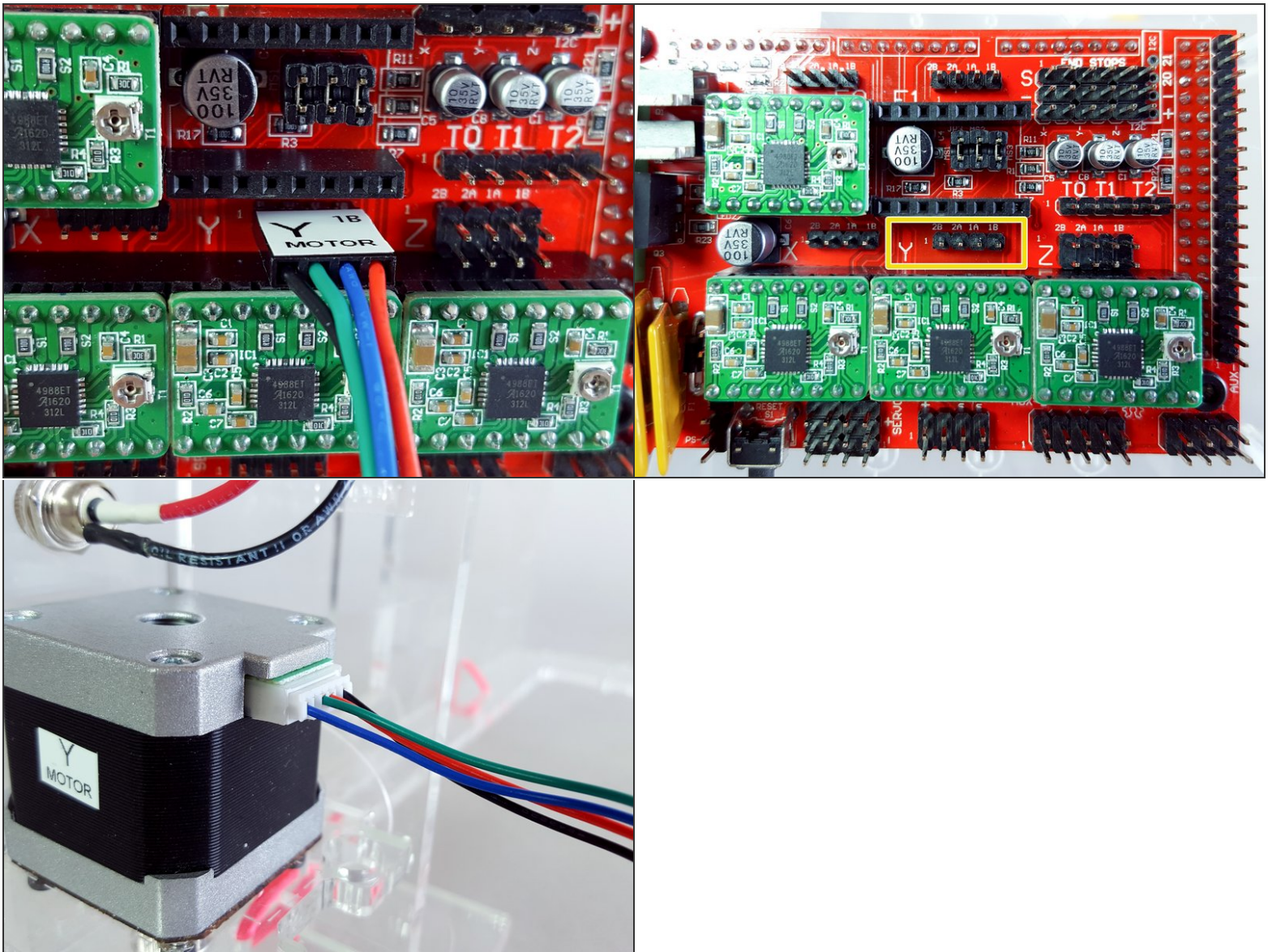
⚠ Make sure the head of the screw is on the switch (so that the nut is on the underside the printer.)

Step 5 — Wire it All Up



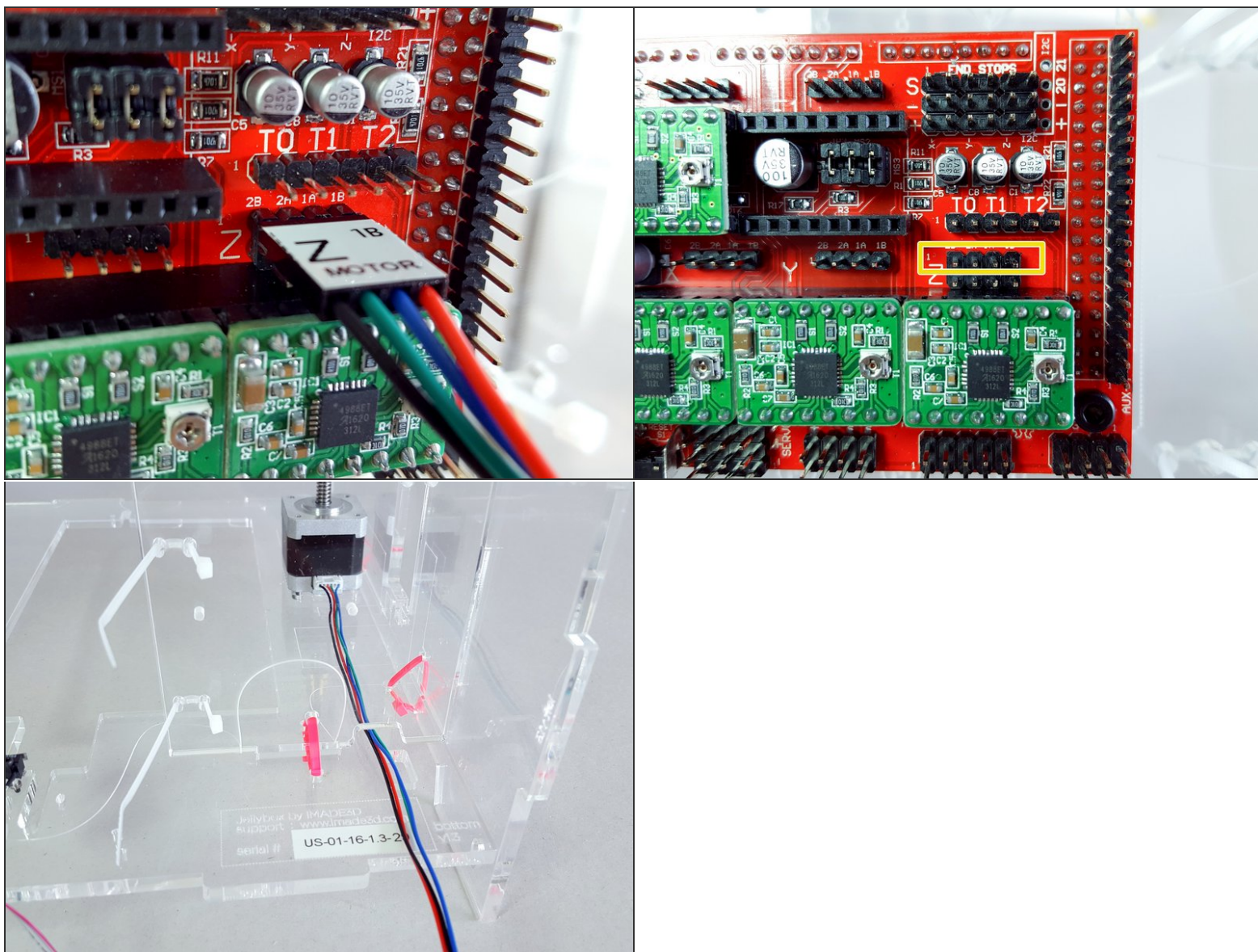
- Y endstop wire.

Step 6



- Y motor wire.

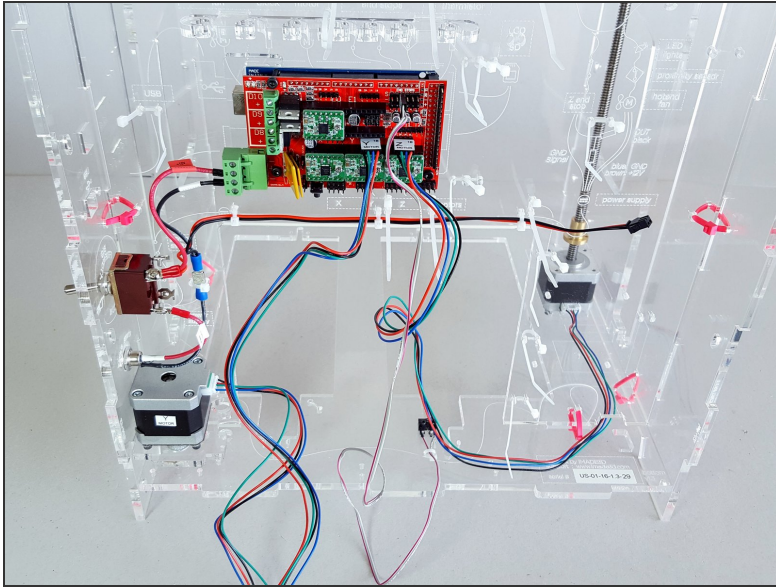
Step 7



- Z motor wire

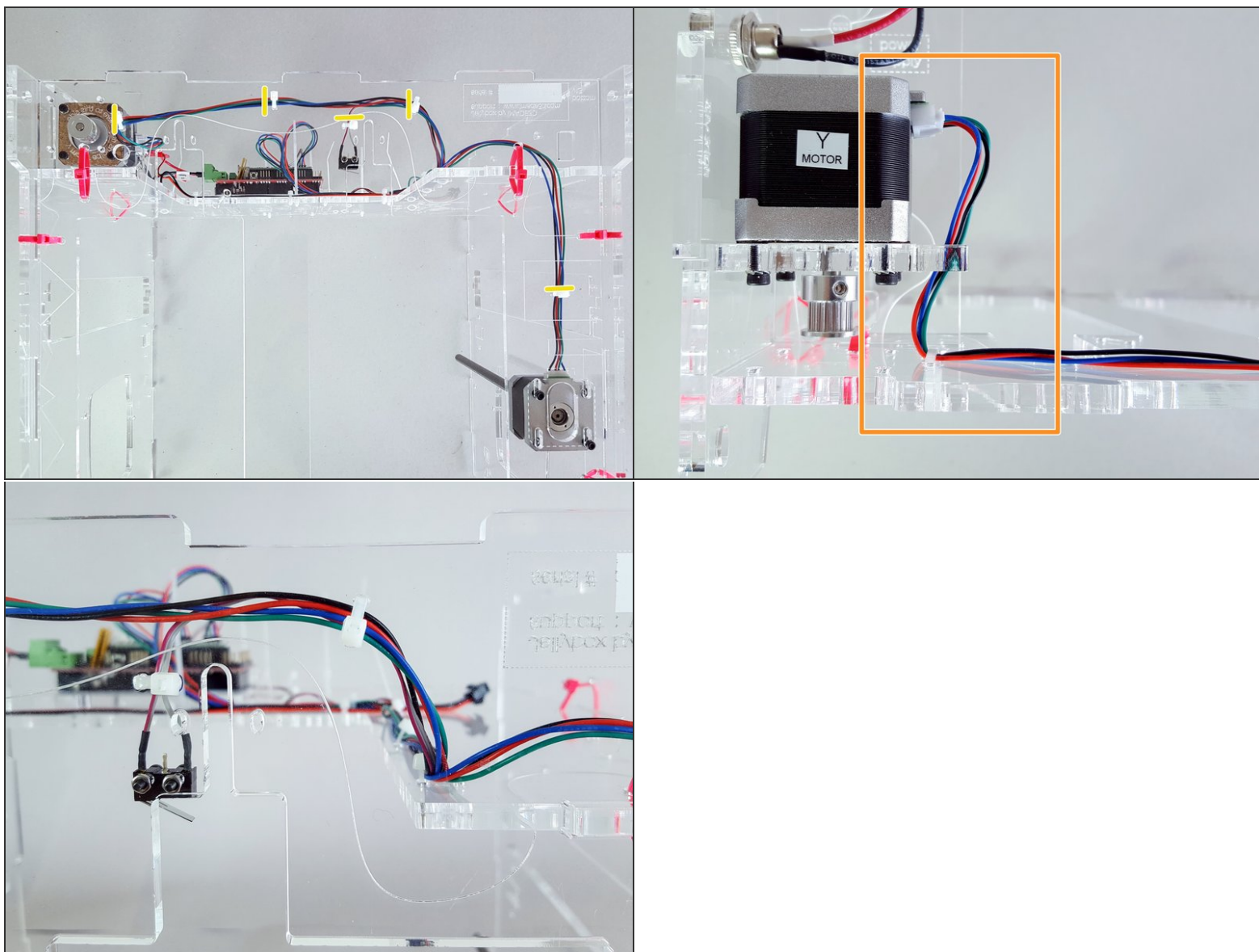
- i** There are two Z motors connectors on the RAMPS board, so you can drive two motors. if you wish so. You can pick either the top or the bottom row, it makes no difference if you only have one Z motor.

Step 8



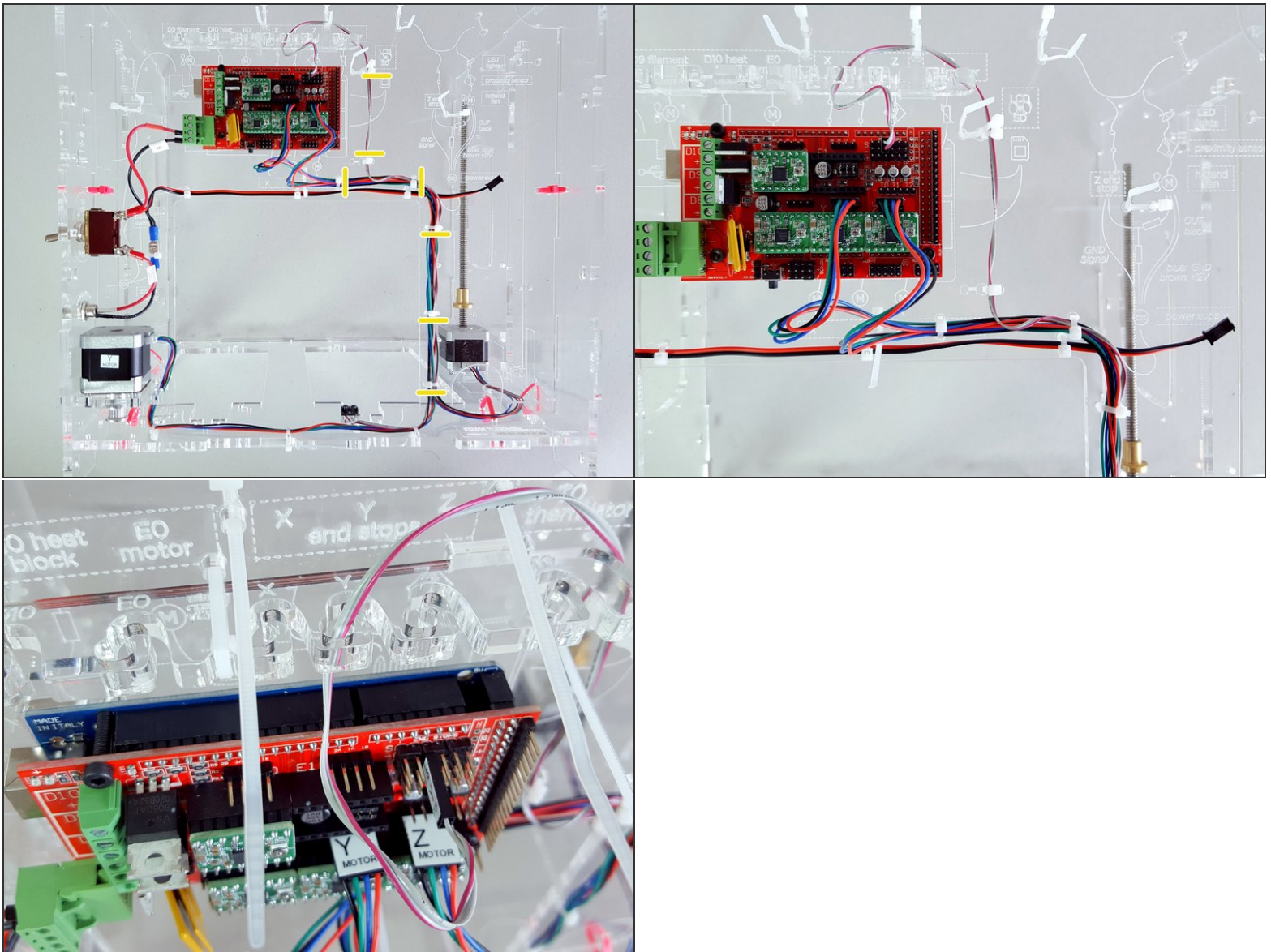
- All connected. It's time to tidy up the wires.

Step 9 — Bottom Wires Attachment



- 4" zip ties
- Don't pull on the Y motor connector. Leave there a bit of slack.
- ⚠ It's crucial the Y motor and Y endstop wires are attached so that they cannot come in contact with the bed.
- ⚠ The zip tie heads must be on the underside of Bottom.

Step 10 — Wires Inner Back Attachment



- 4" zip ties