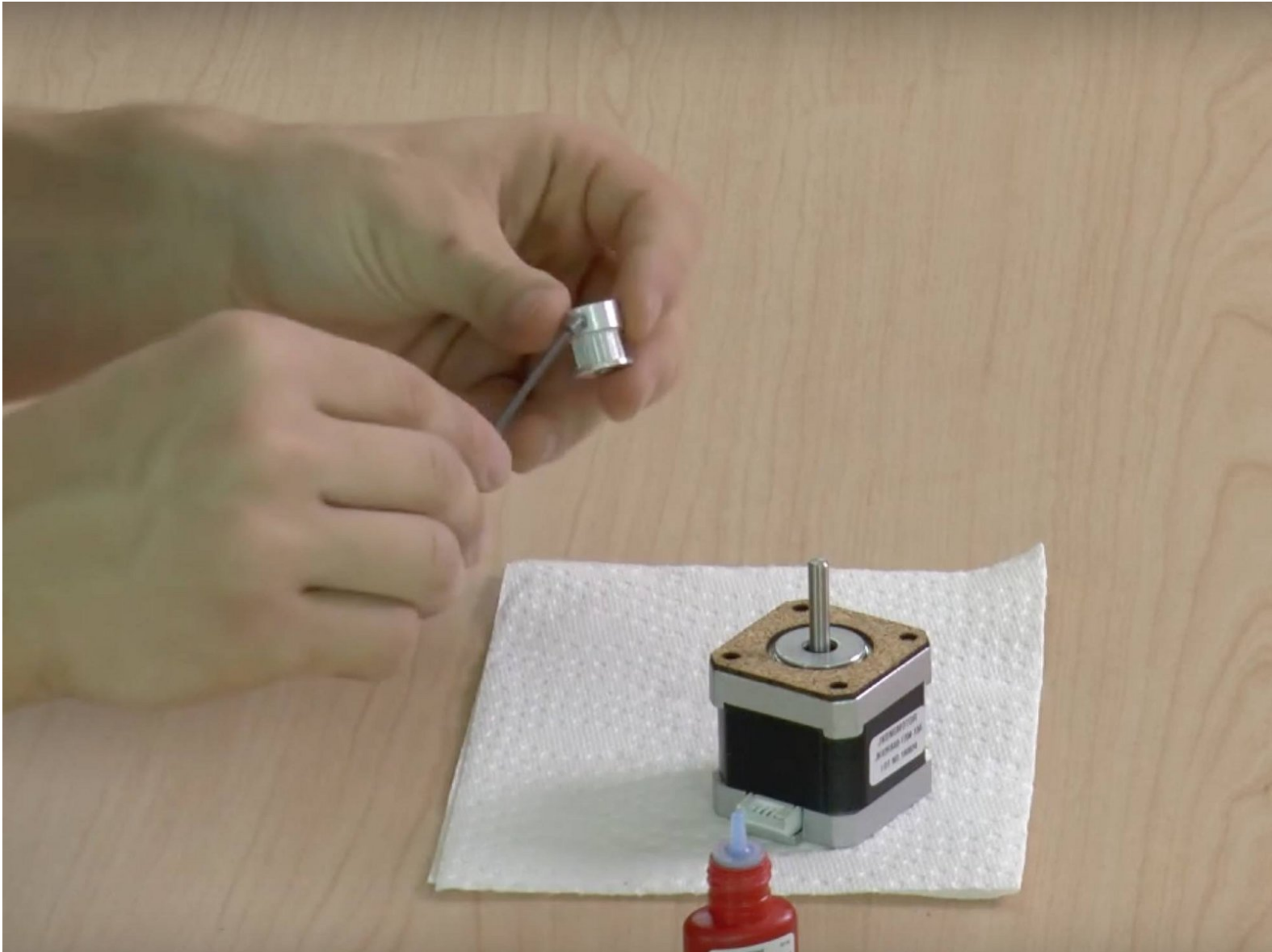




CSS Testing Guide

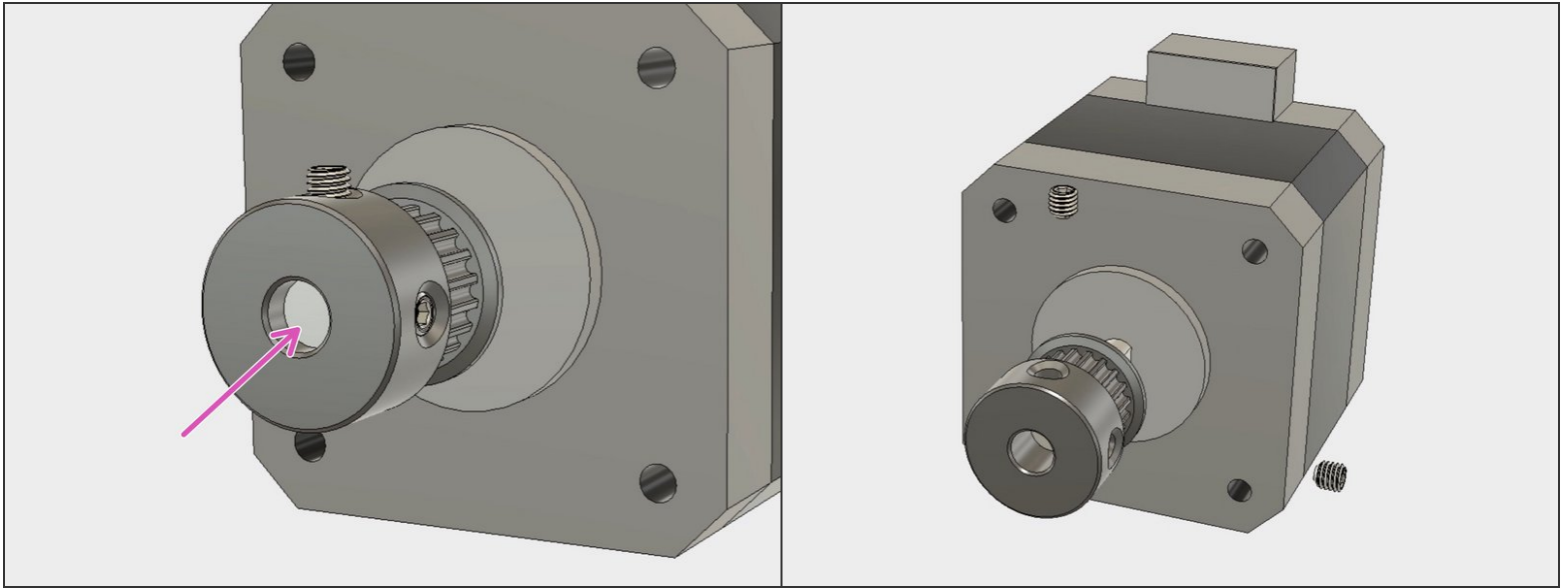
Search summary Search summary Search summary Search summary Search summary



INTRODUCTION

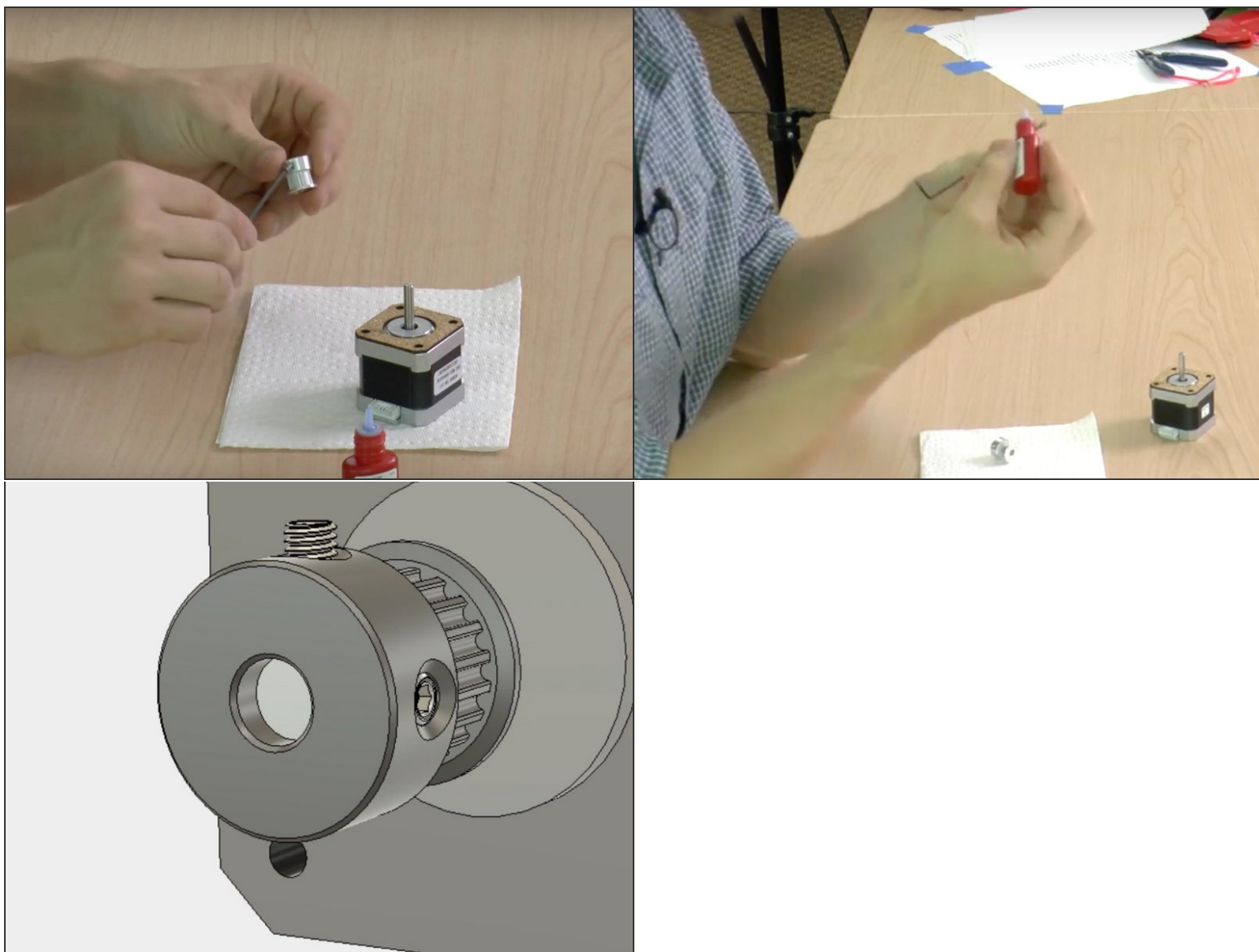
Introduction Introduction Introduction Introduction Introduction Introduction Introduction Introduction
Introduction Introduction Introduction Introduction Introduction Introduction

Step 1 — Install the X Pulley



- The side of the pulley with grub screws should be facing away from the motor.
- The pulley should be extending about 4mm beyond the edge of the motor shaft - as much as possible without the grub screws getting off the motor shaft.

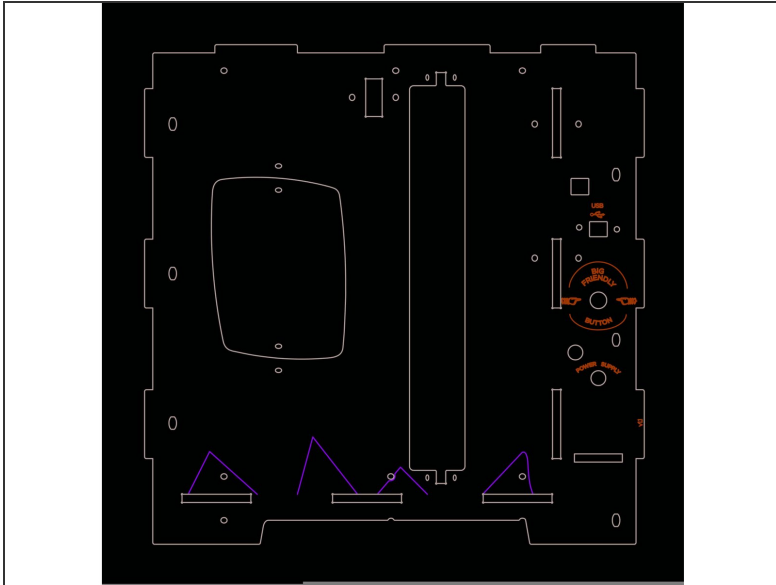
Step 2 — Three Images



⚠ Take out two set screws out of a pulley using a hex key.

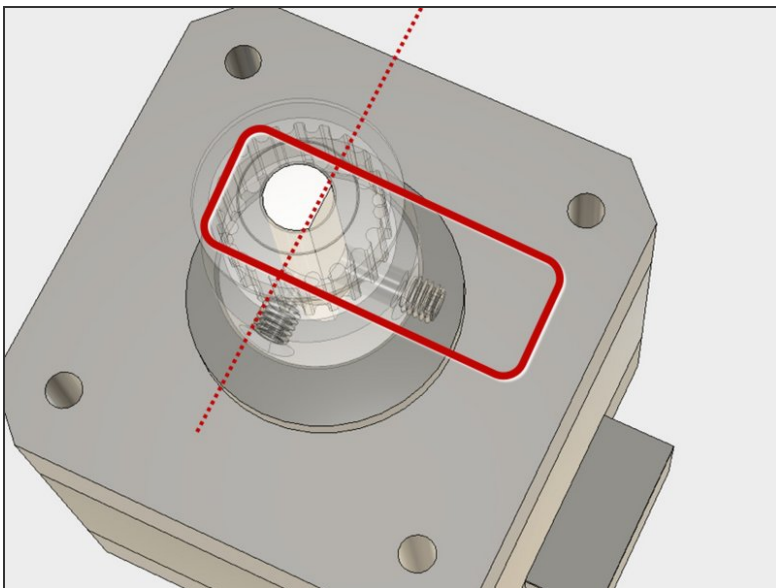
- Put a single small drop of thread lock onto the set screw thread.
- Spread the thread lock into the thread. Do not use too much thread lock. Little is enough. Wipe excess if necessary. Tip: Keep the set screw on the hex key for easy manipulation.

Step 3



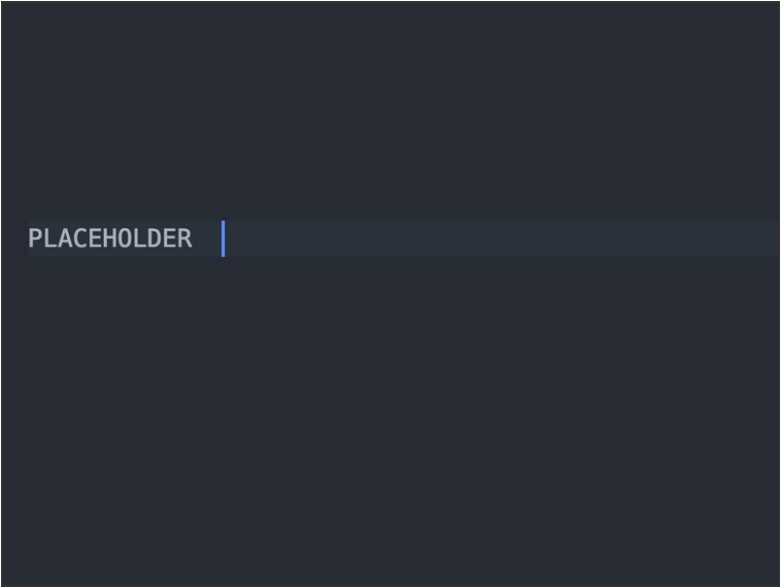
- Insert wisdom here.

Step 4 — Two images



- Re-insert the set screws into the pulley. Repeat procedure for both set screws.

Step 5 — One image



PLACEHOLDER

- Slide the Y pulley onto the Y motor shaft.
- The thin flange side of the pulley faces away from the motor - towards the top of the motor shaft.

Step 6 — No images

- bullet1
- bullet2