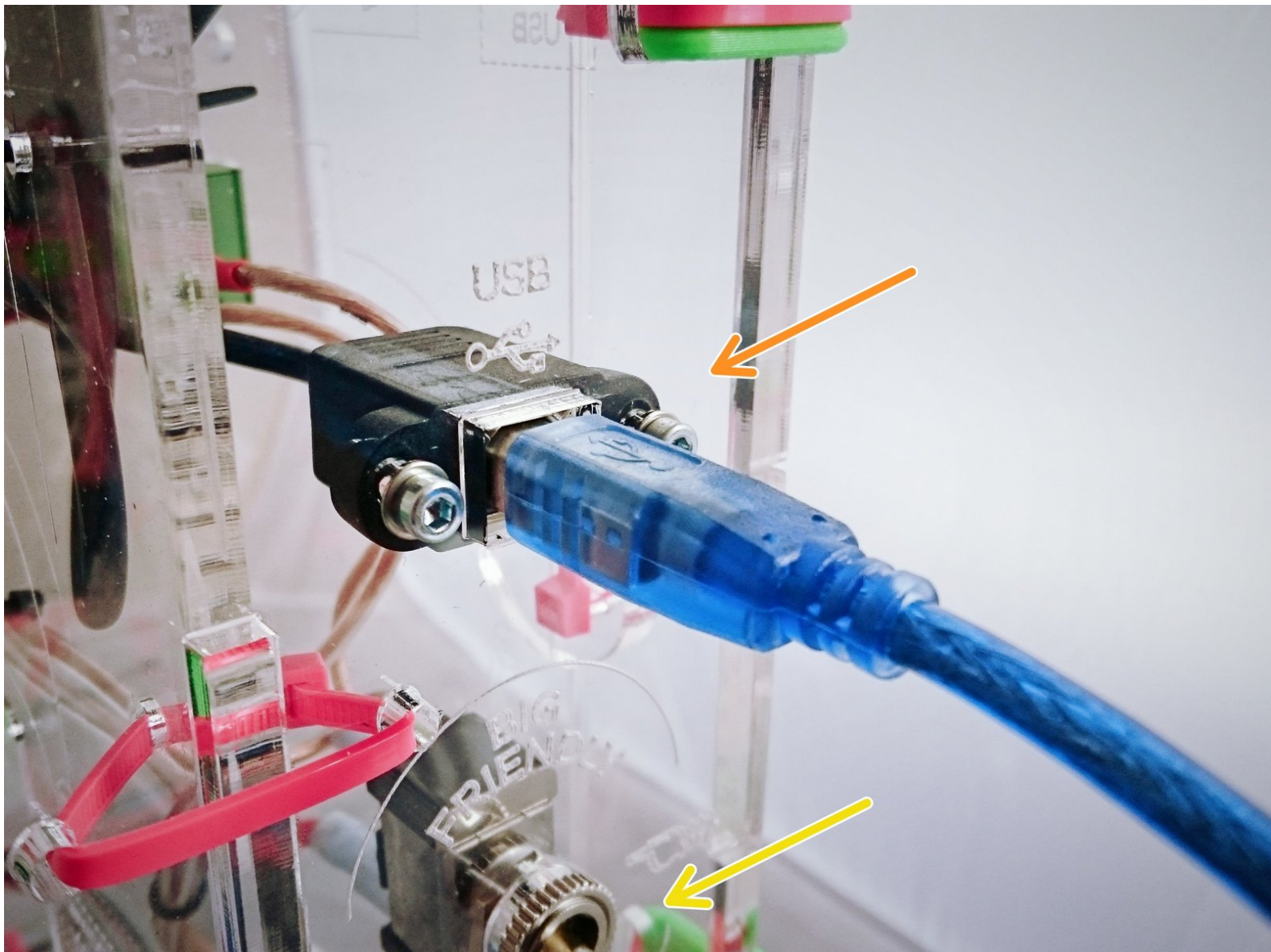


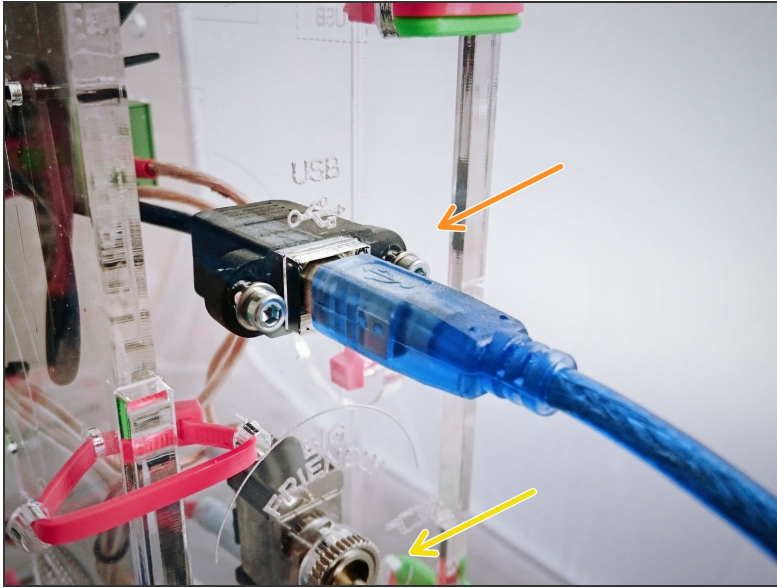


How to find and select the correct port for your 3D printer(Windows Edition)

This Guide will teach you how to find the correct port and select it in Printron for connecting to your 3D printer.

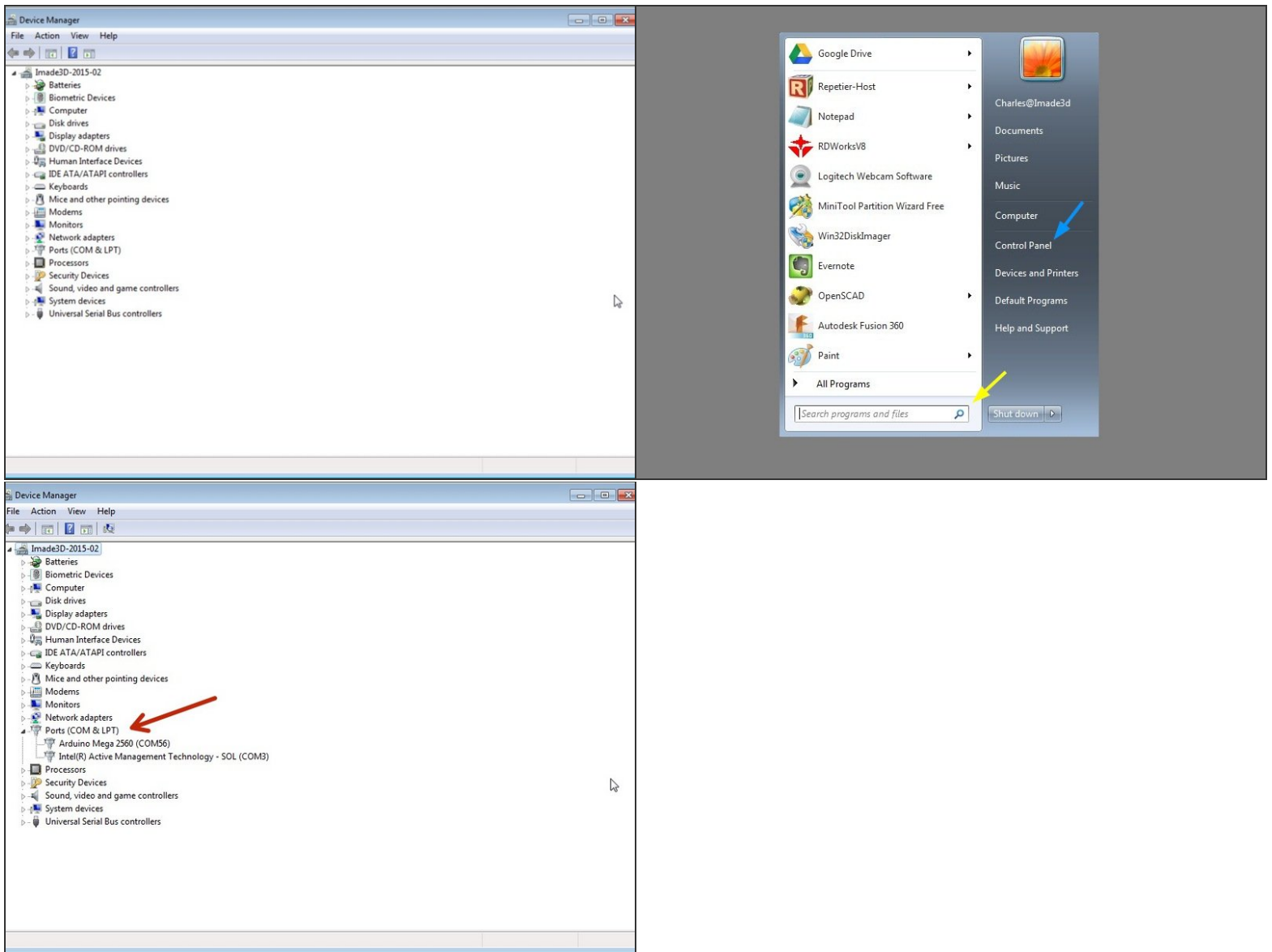


Step 1 — How to find and select the correct port for your 3D printer(Windows Edition)



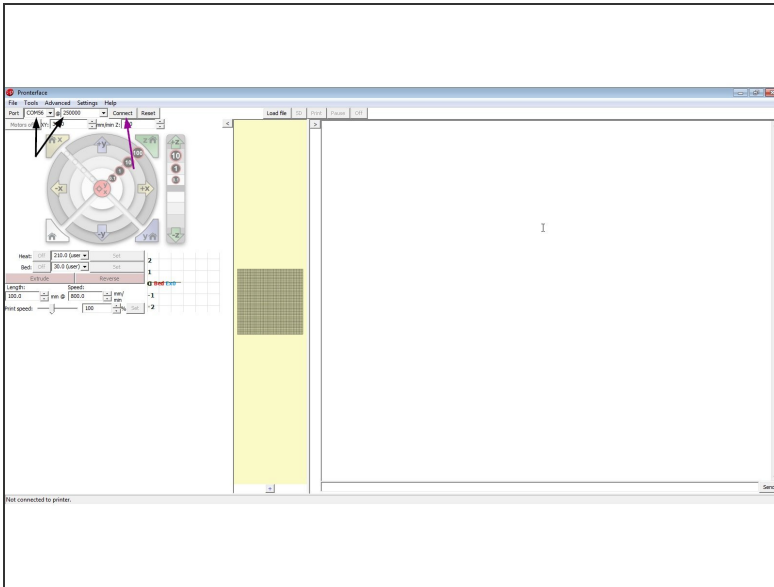
- Be sure that your Printer is connected to your PC by USB.

Step 2



- Open the Device Manager in Windows
 - *The easiest way to do this by typing Device Manager into the search bar. It should appear as one of the results.*
 - *If the search does not work, Select Control Panel>Hardware and Sound>Device Manager*
- Under the Ports(COM & LPT) heading find the entry labeled Arduino Mega 2560 and note the COM number next to it.

Step 3



- Open Printronix and select the correct Com port and ensure that your baudrate is set to 250000
- Press Connect and you are done.