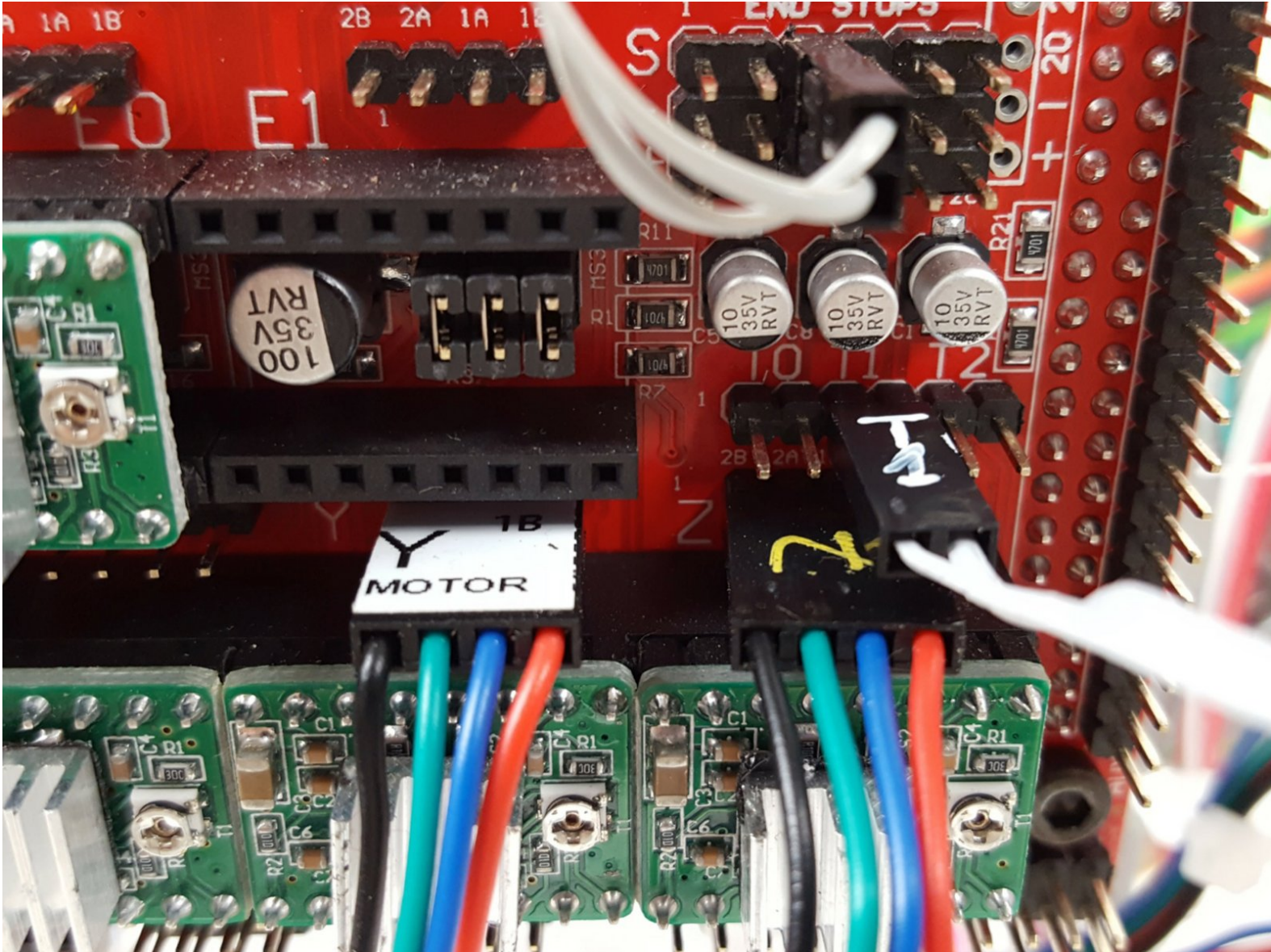


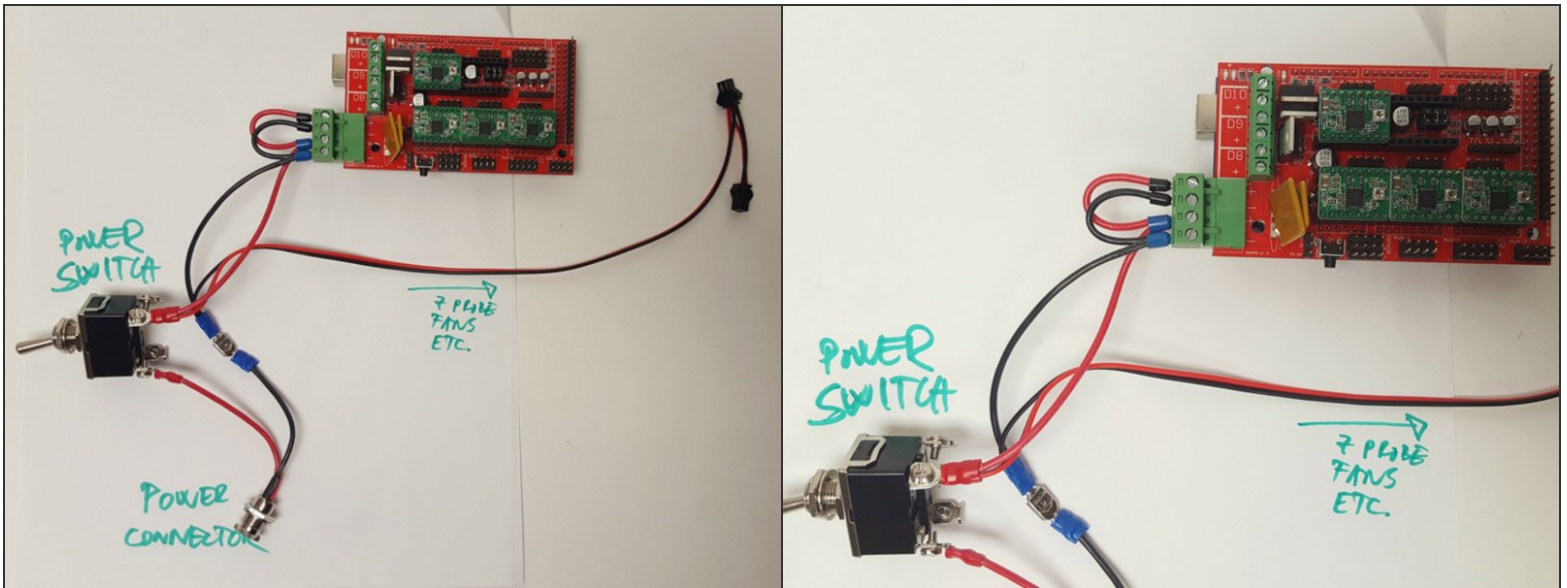


3. RAMPS

In this guide, we connect the RAMPS.

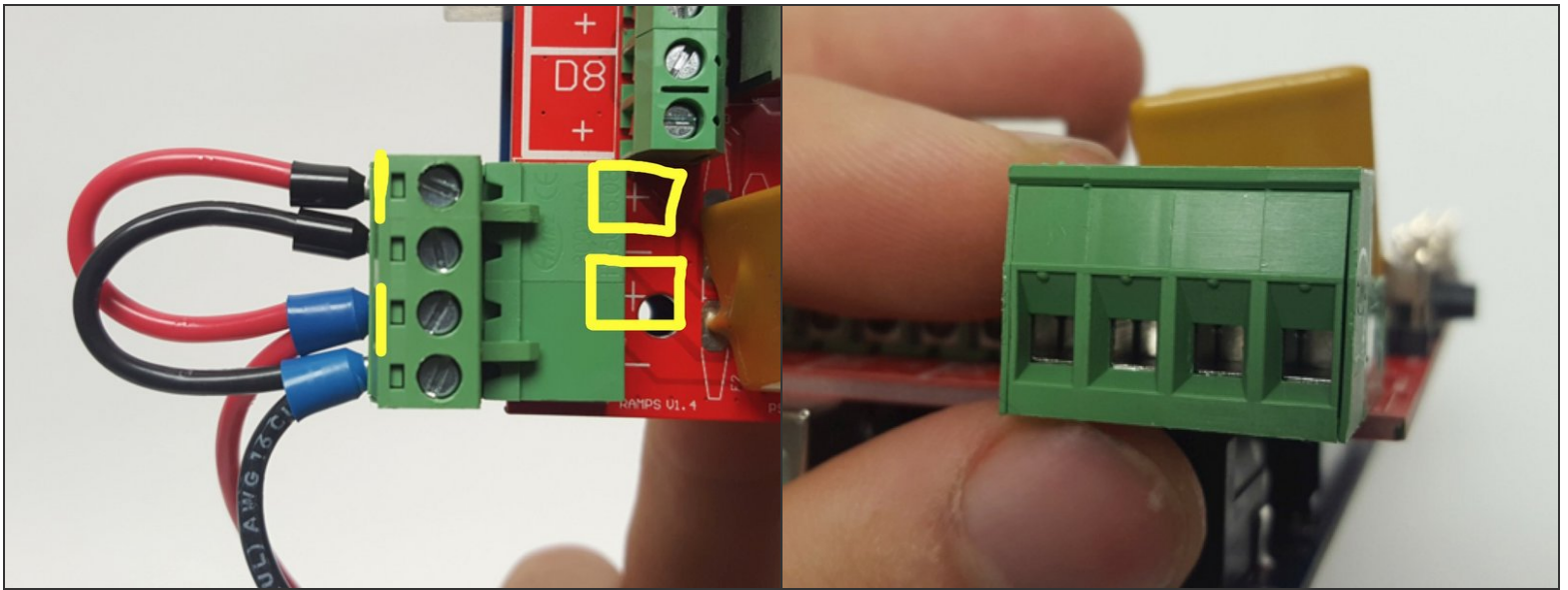


Step 1 — Power Wiring Overview P.1



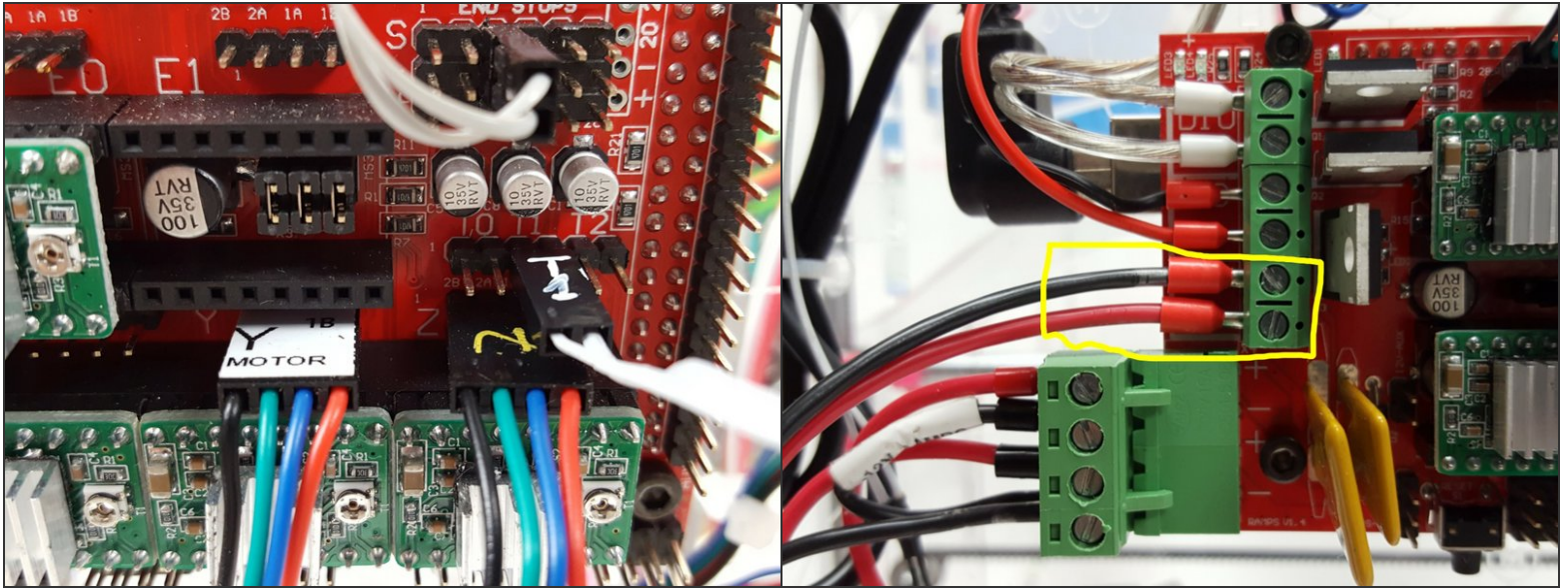
- Here's an overview of the Heated Bed wiring.
- The power supply connects to ALL FOUR terminals of the green connector.
- If you're upgrading from a cold bed, you may need to swap in a new power wiring.

Step 2 — Power Wiring Overview P.2



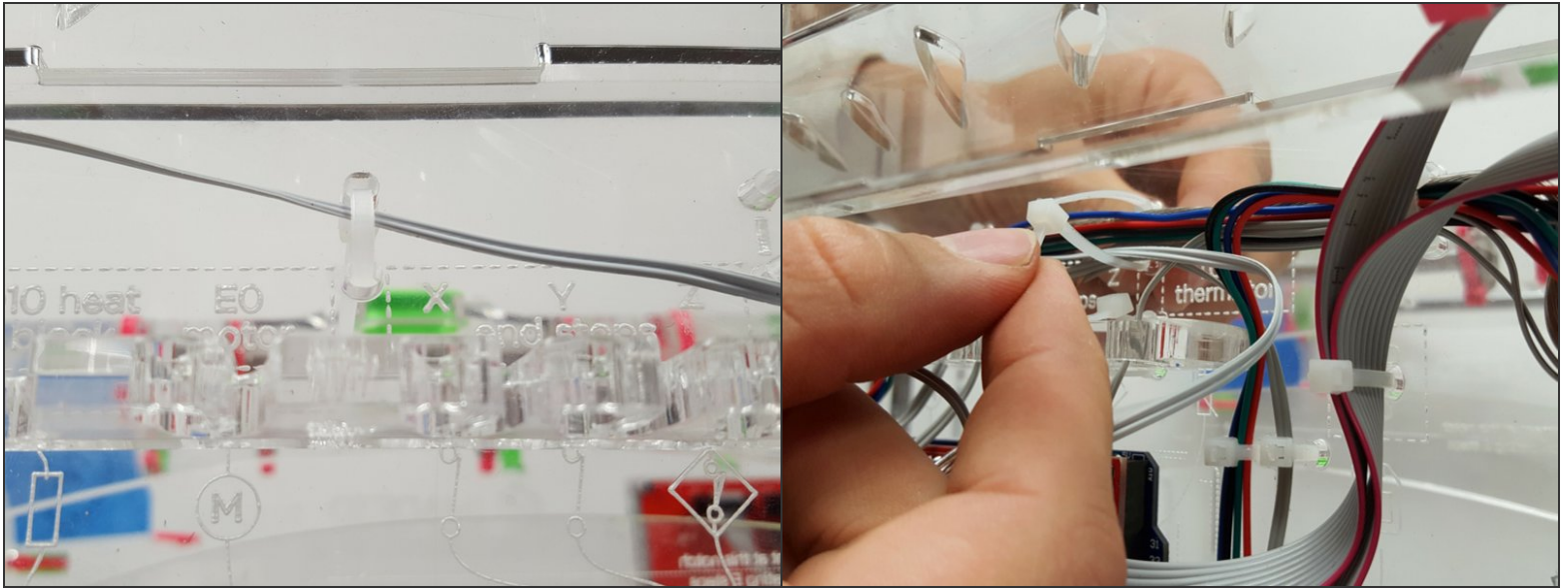
- Red is always plus! Red wires must connect to plus, or you will burn your board.
- There are little pluses right next to the connector.
- The wires ends (ferrules) are thick; you'll need to fully open the connector.

Step 3 — Connect to RAMPS



- The heated bed thermistor connects to T1. Plus and minus don't matter.
- Route the wire up along the right side of ramps, along the top, and down to the T1 slot.
- The heater wires connect to D8. Plus and minus don't matter.

Step 4 — Zip Tie in Place



- **Optional:** IF you're building heated bed from scratch, zip tie the wire anywhere just so that it's not in your way. Later, after we install the X assembly with the X wire harness, cut this zip tie and bundle the thermistor with the top row zip ties
- **IF you're making an upgrade from cold bed,** snip the zip ties in the top row add the heated bed thermistor, and tie the bundle again.